

RS10-55 GEN:3

TELESCOPIC HANDLER



KEY SPECIFICATIONS

- ✓ 10,000 lbs. (4536 kg) maximum lift capacity
- ✓ 55'1" (16.8 m) maximum lift height
- ✓ 5,000 lbs. (2268 kg) lift capacity to 55'1" (16.8 m)
- ✓ 120 hp (89 kW) Cummins diesel engine

KEY FEATURES

- ✓ Place materials for 5 story projects
- ✓ Simple F·N·R joystick
- ✓ 360° operator visibility
- ✓ 4-wheel drive / 4-wheel steer
- ✓ Front outriggers standard for operator capacity at forward reach

*Photos may show items that are optional

RS10-55GEN:3 TELESCOPIC HANDLER



SPECIFICATIONS

		IMPERIAL	METRIC
CAPACITIES	Lift Capacity	10,000 lbs	4536 kg
	Maximum Lift Height	55' 1"	16.8 m
	Capacity at Maximum Lift Height	5,000 lbs	2268 kg
	Maximum Forward Reach	41' 2"	12.6 m
	Capacity at Max. Forward Reach	2,000 lbs	908 kg
	Max. Reach Below Grade	29"	737 mm
ENGINE	Manufacturer	Cummins	
	Power	120 hp	89 kW
	Torque	360 ft-lbs	488 Nm
	Aspiration	Turbocharged	
	Model	QSF 3.8	
	Rated Speed	2500 rpm	
HYDRAULICS	Pump Type	Gear	
	Pump Flow	41.5 gpm	157 L/min
	System Pressure	3,000 psi	207 bar
	Hydraulic Tank Capacity	31 gal	117 L
COMPONENTS	Transmission	Dana 4-speed Powershift	
	Maximum Travel Speed	20.1 mph	32.3 km/hr
	Selective Steering	4-wheel 2-wheel Crab	
	Hydraulically Actuated Brakes	Internal Wet-Disc Brakes	
	Parking Brake	SAHR on Front Axle	
	Axle Manufacturer	Dana	
GENERAL SPECIFICATIONS	Approximate Weight	27,800 lbs	12610 kg
	Length - Less Forks	21'0"	6.4 m
	Width	8'3"	2.5 m
	Ground Clearance	18"	457 mm
	Wheelbase	10'4"	3.1 m
	Turning Radius	13'11"	4.24 m
	Overall Height	8'6"	2.6 m
	Frame Leveling	±10°	
	Fuel Capacity	47 gal	178 L

STANDARD FEATURES

- 4-Speed Powershift Transmission
- 3 Steering Modes - Front Wheel, All Wheel and Crab
- Dynattach® Quick Attachment System
- Four Wheel Wet Disc Brakes
- Full Time Four Wheel Drive
- Left Hand Front Fender
- Power Steering
- Rear Axle Stabilizer
- Transmission Clutch Cut-Out
- 12 Volt Electric System
- Backup Alarm
- Backup Light
- Brake Lights
- Multi-Function Engine Diagnostic Display
- Cummins Turbocharged Diesel Engine
- Engine Block Heater
- Automatic Self-Leveling Fork System
- Power Port
- Single Key Start
- 14.00 x 24 Pneumatic Tires
- Boom Tip Auxiliary Hydraulics
- Front Outriggers

OPTIONAL FEATURES

- Enclosed cab with heat and/or A/C
- Suspension Seat
- Lift Hook
- PWP for Work Platform Use
- Light Package
- Rock Tread, Foam-Filled, Solid Tires
- Rear Video System
- Easy Manager Telematics System



gehl.com

One Gehl Way, West Bend, WI 53095
Phone: (262) 334-9461



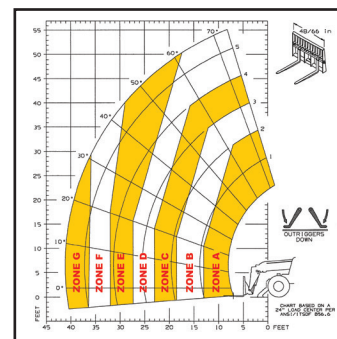
GEHL COMPACT EQUIPMENT

Gehl reserves the right to add improvements or make changes in features and specifications at any time without notice or obligation.

Gehl reminds users to read and understand the operator's manual before operating any equipment. Also, make sure all safety devices and shields are in place and functioning properly.



- A** 10,000 lbs. (4536 kg)
- B** 8,000 lbs. (3629 kg)
- C** 6,000 lbs. (2722 kg)
- D** 5,000 lbs. (2268 kg)
- E** 4,000 lbs. (1814 kg)
- F** 3,000 lbs. (1361 kg)
- G** 2,000 lbs. (907 kg)
- H** 1,000 lbs. (454 kg)
- I** 500 lbs. (227 kg)
- J** 250 lbs. (113 kg)



- A** 10,000 lbs. (4536 kg)
- B** 8,000 lbs. (3629 kg)
- C** 6,000 lbs. (2722 kg)
- D** 5,000 lbs. (2268 kg)
- E** 4,000 lbs. (1814 kg)
- F** 3,000 lbs. (1361 kg)
- G** 2,000 lbs. (907 kg)