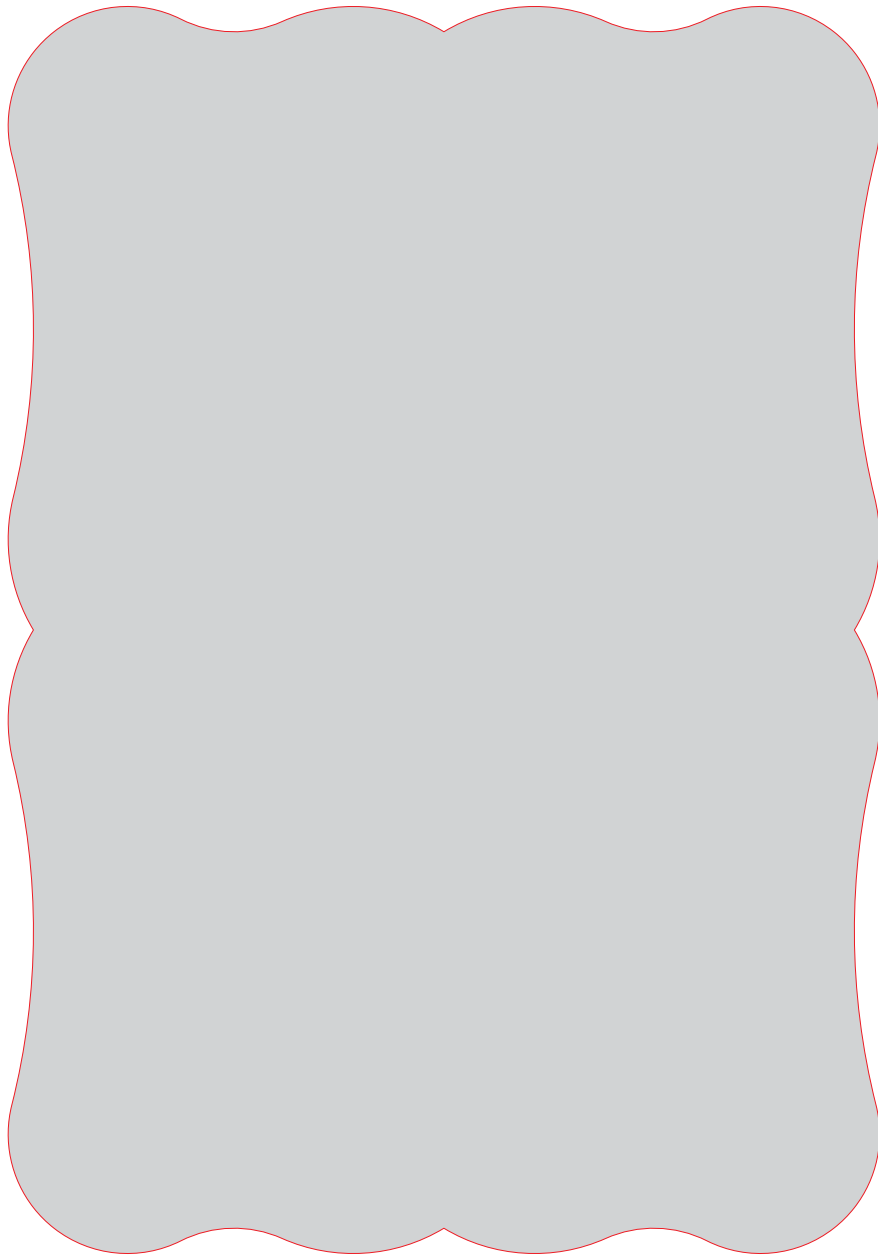


Mothers Day Scroll Saw Box with blank lid and divider



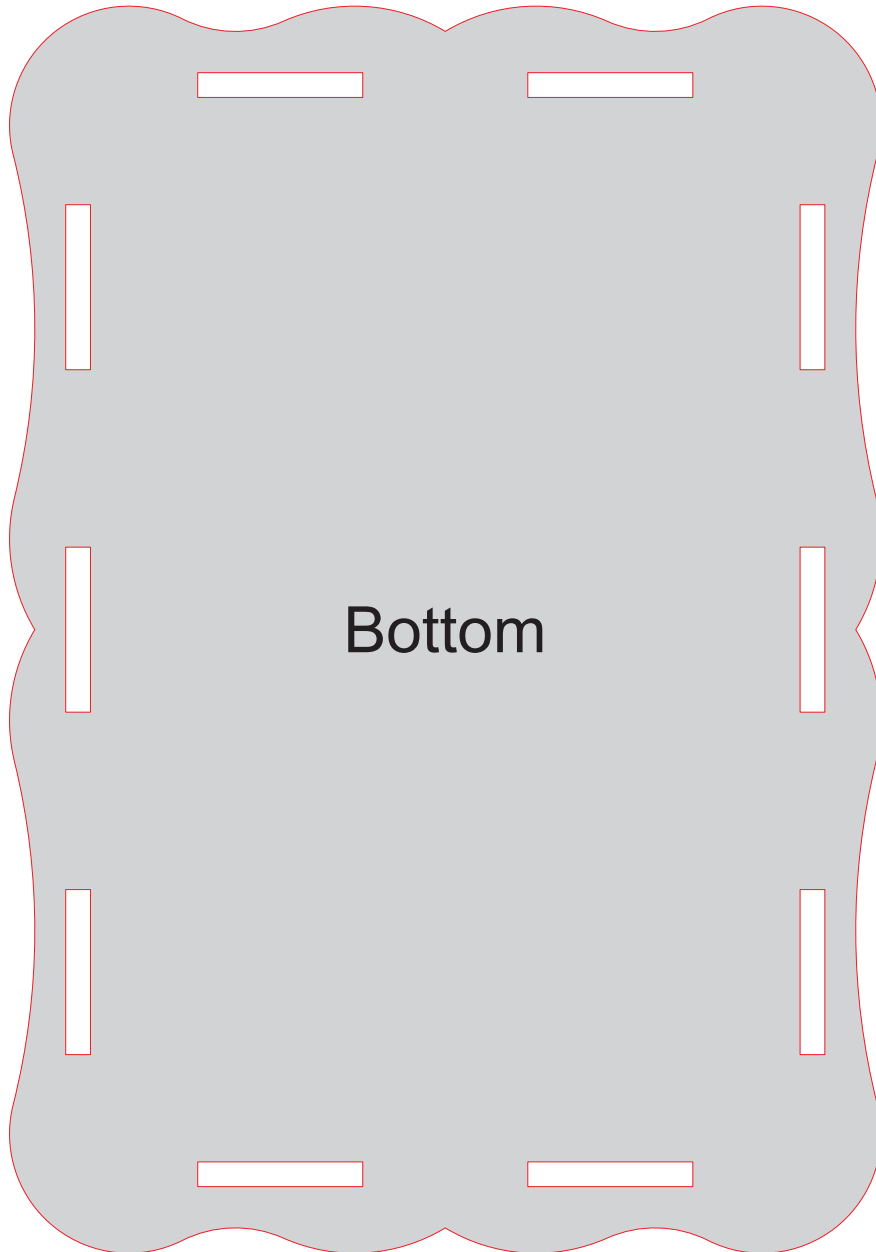


Plain top add
your design

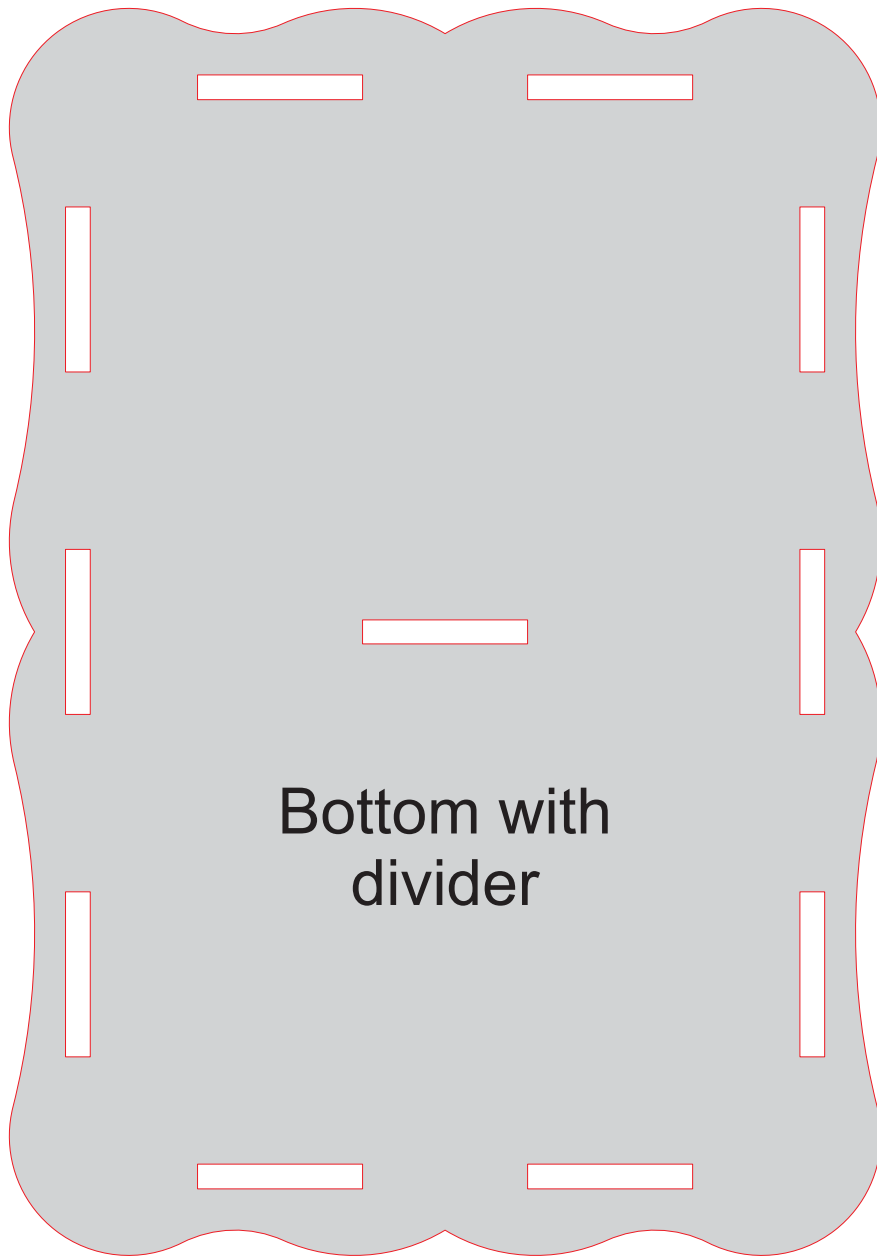


Use 1/4" thick wood for top and bottom

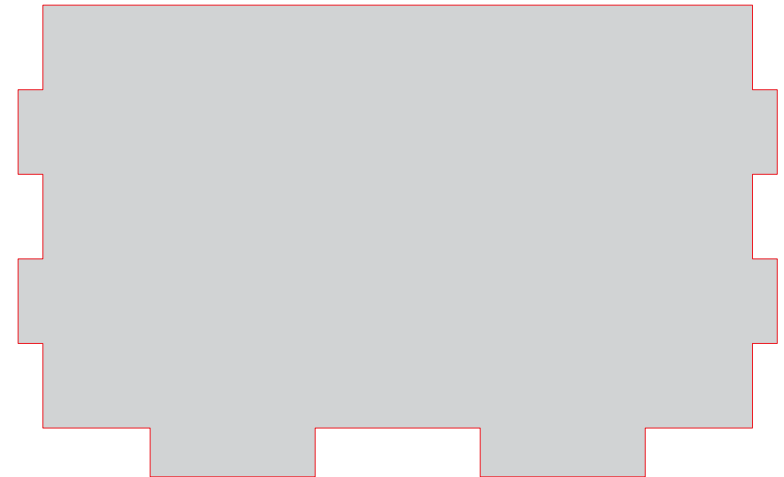
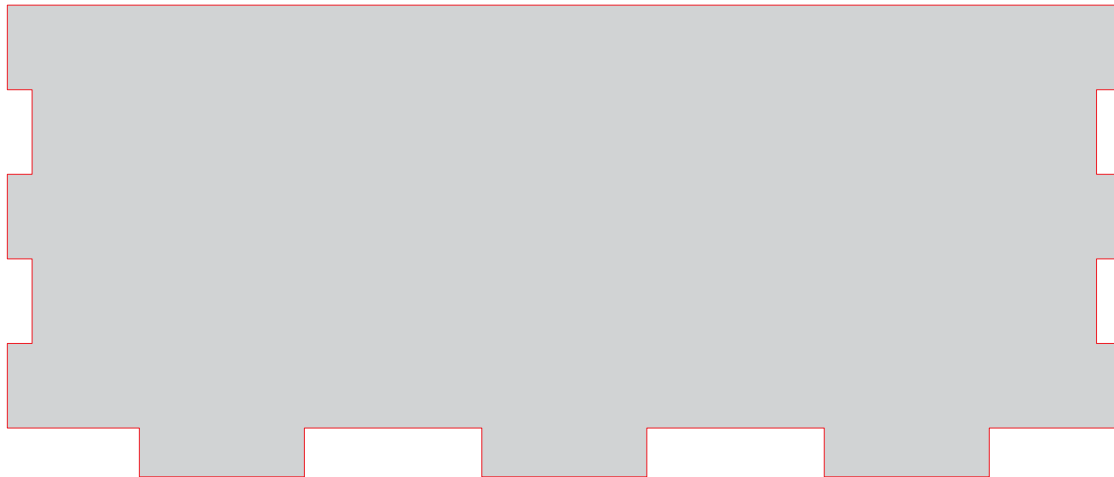
Top



Use 1/4" thick wood for top and bottom

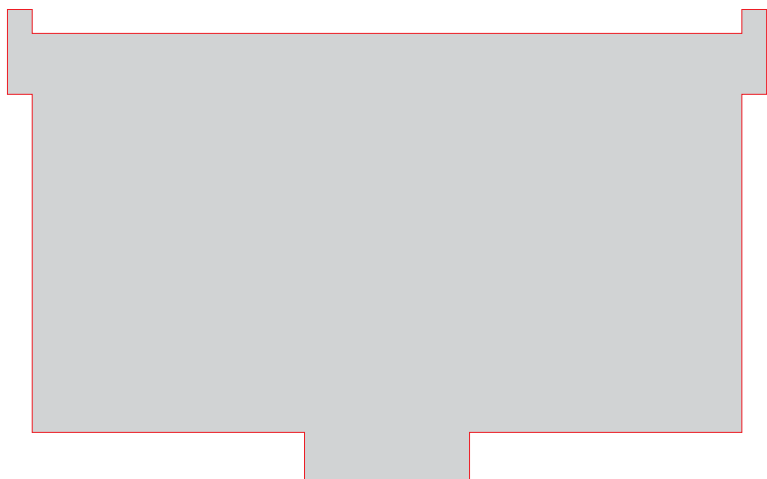
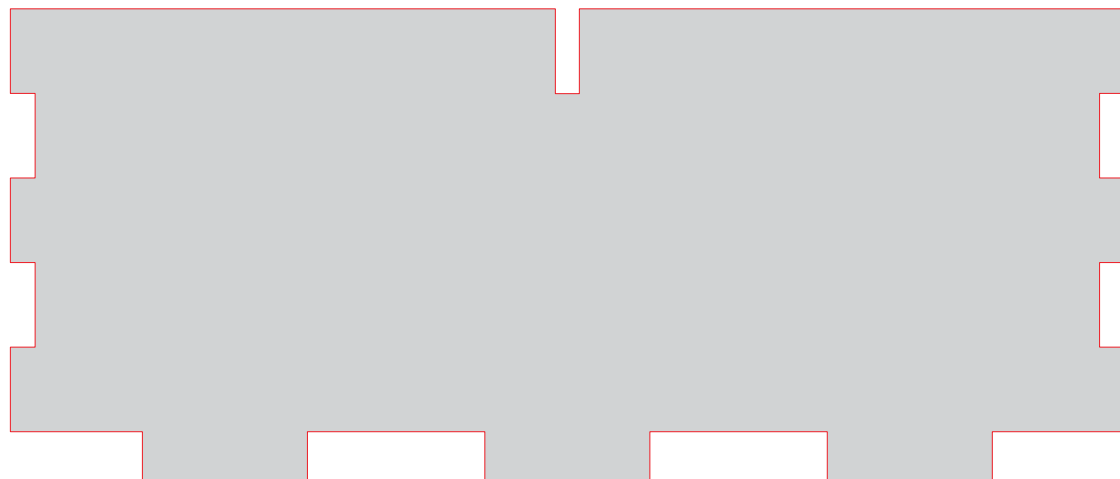
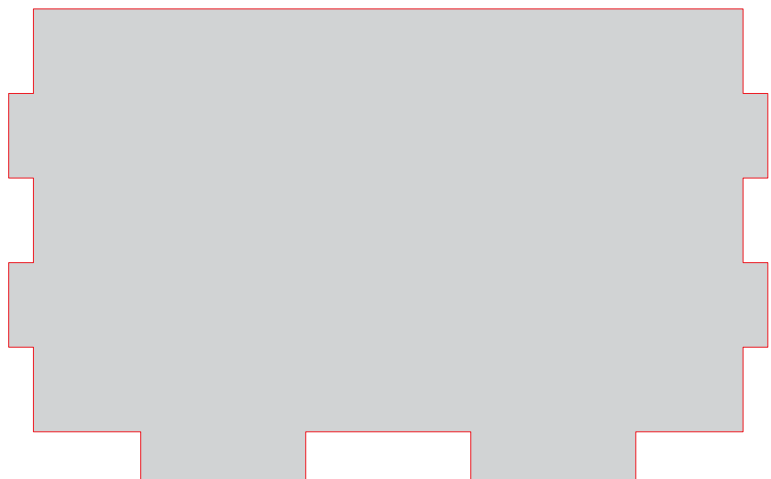
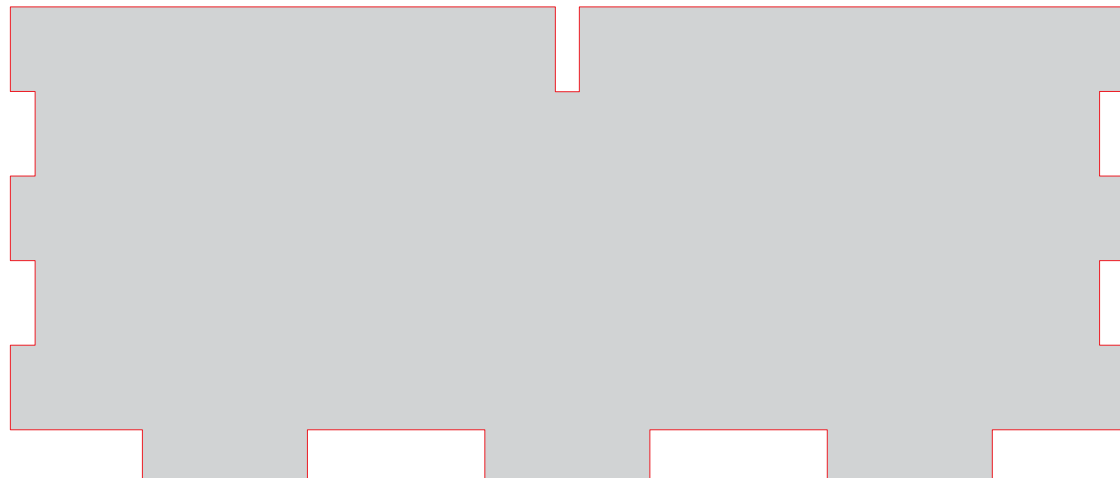
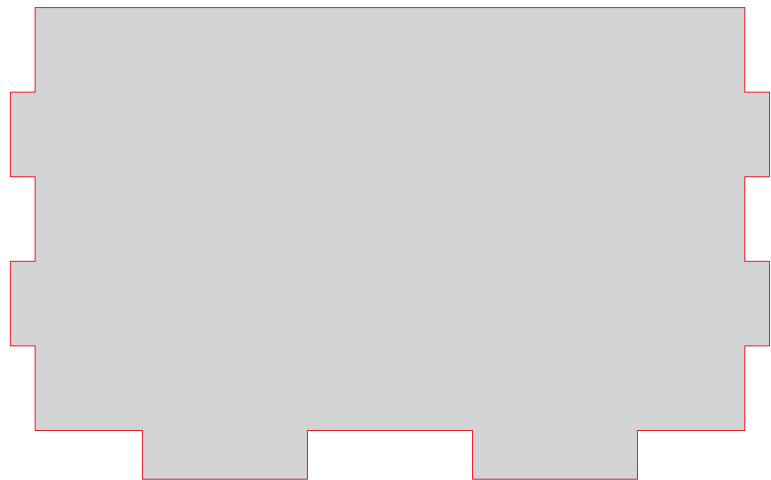


Use 1/4" thick wood for top and bottom



Use 1/8" thick wood for sides

Sides



Use 1/8" thick wood for sides

Sides with divider