



GRABO

# COMMERCIAL

VINYL FLOORINGS

2019




GRABO  
COMMERCIAL



GRABO

# COMMERCIAL

VINYL FLOORINGS

	<b>HOMOGENEOUS FLOOR COVERINGS</b>	<b>8</b>		<b>WALL COVERING</b>	<b>92</b>
	Fortis	10		Muravyl	94
	Fortis Fitt	14		<b>GRABO'S RECOMMENDATION</b>	<b>96</b>
	Triumph	16		<b>APPLICATION GUIDE</b>	<b>98</b>
	Conducto S	18			
	<b>HETEROGENEOUS COMMERCIAL FLOOR COVERINGS</b>	<b>20</b>			
	Silver Knight	22			
	Acoustic	30			
	Safety	40			
	Diamond Standart	50			
	<b>HETEROGENEOUS LIGHT-COMMERCIAL FLOOR COVERINGS</b>	<b>58</b>			
	Aura	60			
	Top	62			
	Astral	66			
	SoundTex	72			
	<b>LVT</b>	<b>76</b>			
	PlankIT	80			
	Domino	88			





# GRABO

## COMMERCIAL VINYL FLOORINGS

We're excited to introduce our new Grabo's 2019 Commercial catalogue, your guide to our products and services.

You can find all about our heterogeneous and homogenous floor and wall covering products recommended for commercial and light-commercial applications.

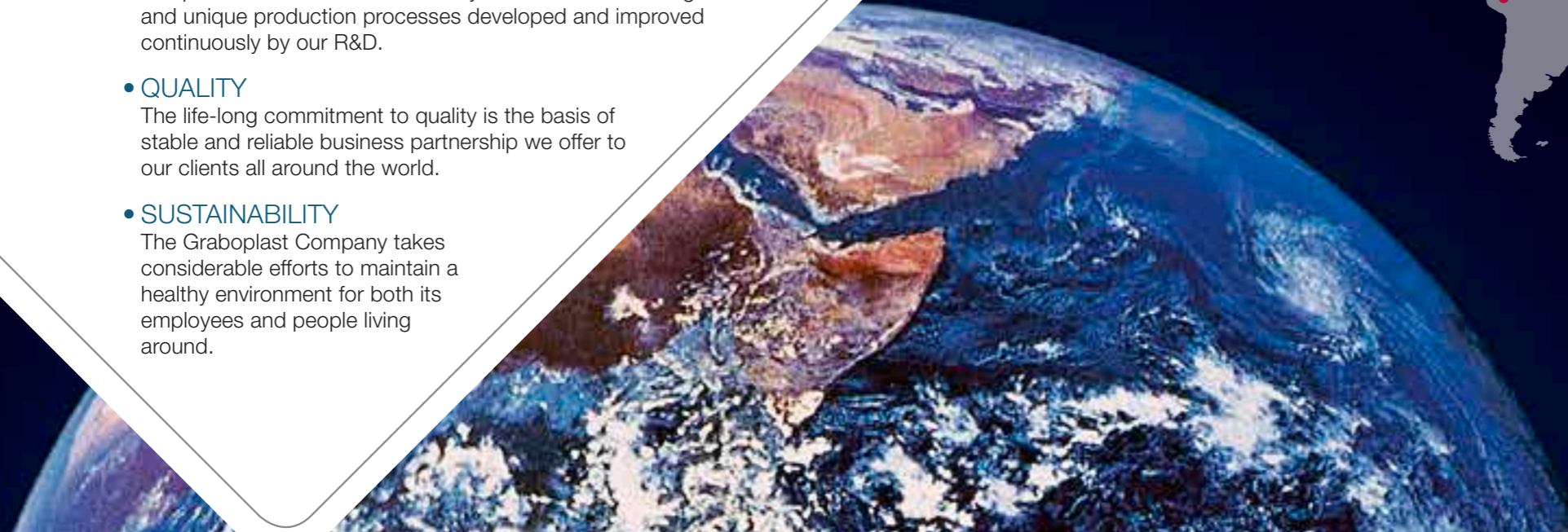
### WHY GRABO?

- **TRADITION**  
Graboplast Ltd is one of the biggest independent floor covering manufacturer company with over 110 years of experience.
- **FLEXIBILITY**  
The key factor of this long-term success is the ability to develop the products that would meet the always changing market requirements.
- **INNOVATION**  
Our production is based exclusively on our own technologies and unique production processes developed and improved continuously by our R&D.
- **QUALITY**  
The life-long commitment to quality is the basis of stable and reliable business partnership we offer to our clients all around the world.
- **SUSTAINABILITY**  
The Graboplast Company takes considerable efforts to maintain a healthy environment for both its employees and people living around.



## GLOBAL PRESENCE

More than 80 countries and 650 partners



GRABO  
COMMERCIAL

# ENVIRONMENTAL ATTRIBUTES OF GRABO VINYL FLOORINGS



## PHTHALATE FREE TECHNOLOGY

Grabo floorings contain biologically inert plasticizer which can be used in sensitive areas as well, such as medical devices and children toys. Thanks to the eco-friendly formulations our products have low volatile organic compounds (low VOC), therefore they do not adversely affect the indoor air quality.



## 100% RECYCLABLE

Beside the carefully selected raw materials and the environment-friendly manufacturing solutions we pay attention to the fact that our products do not impact the environment at the end of their life-cycle either. Accordingly our floorings are 100% recyclable.



## NO WASTE PRODUCT

It is important to know that we not only declare that our products can be 100% recycled but we ourselves can convert the production waste and post-consumer waste into valuable raw materials which are incorporated into our floor production.



## NO HARMFUL MATERIALS

Grabo floorings are metal and solvent free resulting in reduced global environmental pollution.



## NO WAX

Grabo floorings have reduced cleaning requirements. Environmental impact is lessened by: no energy needs for waxing, reduced energy needs for cleaning, reduced cleaning agent use, reduced water use, and reduced wastewater generation.

# WHAT IS...



## SILVER KNIGHT

Grabo Silver Knight eliminates harmful bacteria without the use of chemicals. It has a self-disinfecting surface reached by a unique double-defense-line.



## iGUARD PUR SURFACE

UV cured, cross linked Polyurethane reinforcement which ensures easy cleaning and durability. No additional surface treatment needed for the whole lifetime of the product.



## TECH SURFACE

Extreme durability due to PUR and micronized Al<sub>2</sub>O<sub>3</sub> particles TECH Surface is a revolutionary new technology which makes the surface not only extremely hard and wear resistant but flexible so the installation can be carried out easily and quickly. The benefits of TECH Surface technology are the excellent stain and chemical resistance, the abrasion resistance and the easy maintenance.



## EASY CARE

Easy Care PUR makes the product easy to clean, whilst at the same time ensuring the safety properties and other technical performance benefits remain for a very long time.



## CLP SYSTEM

CLP is a complex system built up of PVC and cross linked polymer. Its essentiality is, on one hand - against other technical solutions - that CLP ensures throughout the intensive usage the constant parameters not only on the surface, but in the cross section of the wear layer: the durability of the product increases, which involves that the degree of wear and tear decreases. On the other hand due to the high density of the cross links, CLP diminishes the adhesion of the contamination on the surface, substantially improving the cleanability of the flooring.



## GRABOSAN

No surface is more at risk of contamination than the floor. In healthcare one of the most important steps in reducing the spread of infectious diseases is the cleaning and sanitizing of surfaces. Routine cleaning with detergent and water is useful for removing visible dirt and germs, but floor coverings require an additional performance to reduce the number of germs.

Therefore Grabo invented graboSAN, the anti-microbe additive contained surface treatment against mold, fungi, yeast, algae and bacteria. The result of the test method given in the International Standard ISO 846:1997 certify that no significant microbe growth could be observed on the graboSAN surface treated floors. The tests have been carried out with the Pseudomonas aeruginosa bacterium, which is one of the most common pathogens involved in hospital infections causing pneumonia, and with Aspergillus niger fungus, which causes a disease called black mold on certain fruits and vegetables.

FORTIS  
FORTIS FITT  
TRIUMPH  
CONDUCTO S

# HOMOGENEOUS

COMMERCIAL FLOOR COVERINGS

GRABO  
COMMERCIAL

# FORTIS

HIGH PERFORMANCE,  
NON-DIRECTIONAL  
HOMOGENEOUS  
FLOOR COVERING



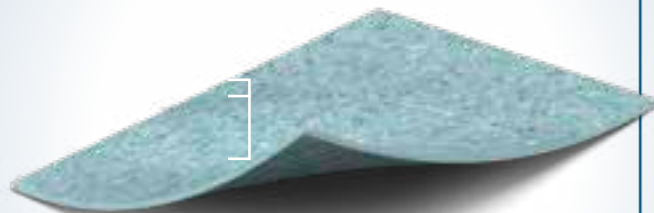
## PERFORMANCE, FEATURES & BENEFITS

Excellent abrasion resistance, Unique non-directional design, Low residual indentation  
Easy cleaning and maintenance thanks to iGuard PUR Surface, Anti-bacterial, Antistatic

## RECOMMENDED USAGE

Healthcare | Education | Offices  
Other public areas

## CONSTRUCTION



### DESCRIPTION

Construction		homogeneous
Binder content	EN ISO 10581	Type I.
Total thickness	EN ISO 24346	2.0 mm
Wear layer thickness	EN ISO 24340	2.0 mm
Width of roll	EN ISO 24341	2 m
Length of roll	EN ISO 24341	20 lm
Total weight	EN ISO 23997	2,8 kg/m <sup>2</sup>

### CLASSIFICATION

European classification	EN 685	class: 34/43
-------------------------	--------	--------------

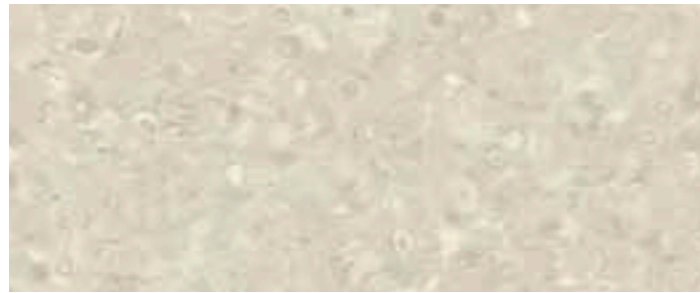
### PERFORMANCE

Abrasion group	EN 660-1	T
Residual indentation	EN ISO 24343	max. 0.1 mm
Dimensional stability	EN ISO 23999	max. 0.4 %
Fire resistance	EN 13501-1	class: Bfl-s1
Slip resistance	DIN 51130	R9
	EN 13893	class: DS
Electrical resistance	EN 1815	< 2 kV
Chemical resistance	EN ISO 26987	✓
Light fastness	EN 20105 B02	grade 6
Castor chair resistance	EN ISO 4918	✓
Hygiene		bacterial resistant
Seaming method		hot or cold welding
Warranty		10 year



iGuard PUR Surface  
Non-directional  
homogeneous layer

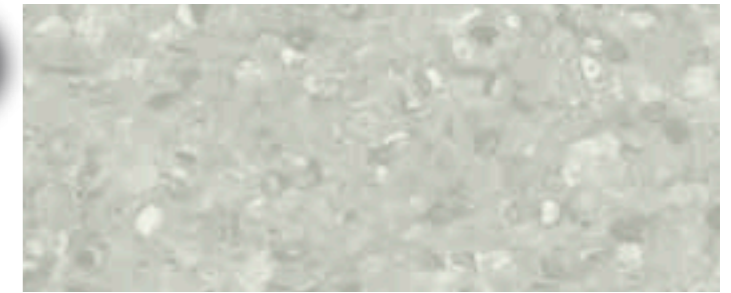
# FORTIS



SILVER



TOBACCO



BONE



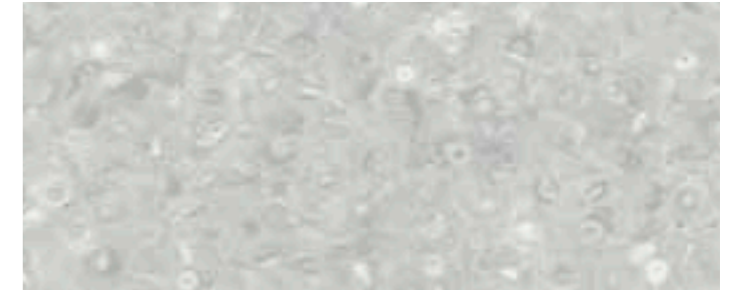
SAND



CANARI



STEEL



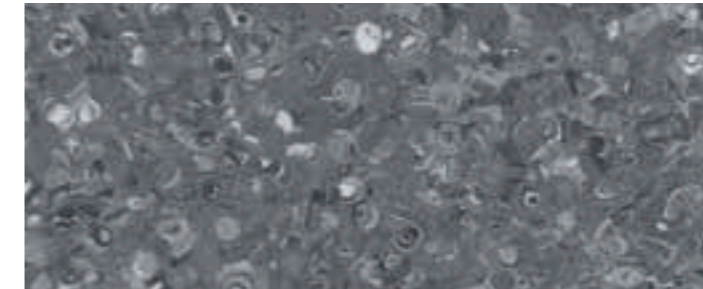
FOG



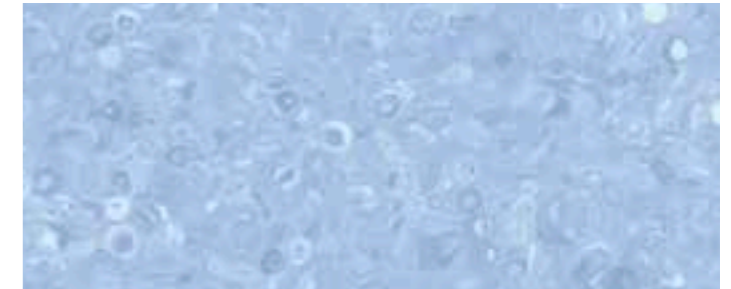
CARAMEL



GOLD



ANTHRACITE



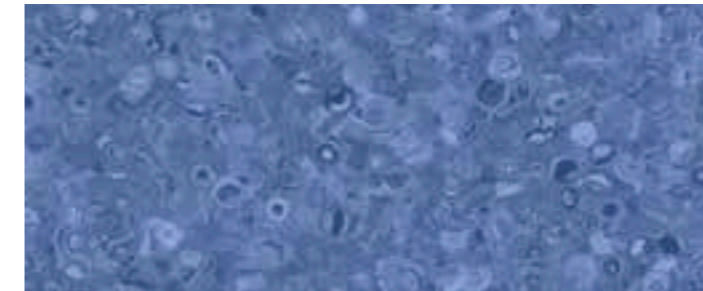
AQUA



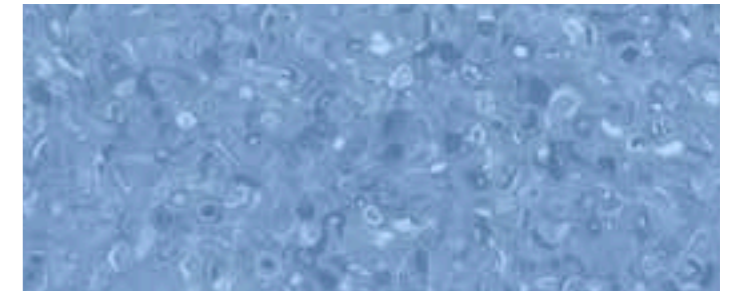
KORK



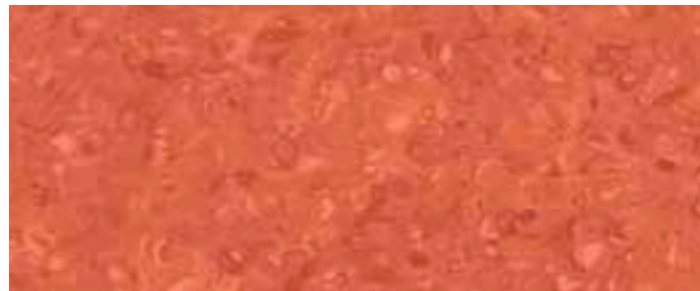
ORANGE



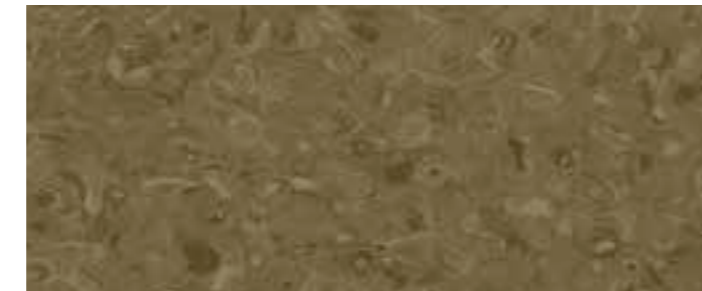
INDIGO



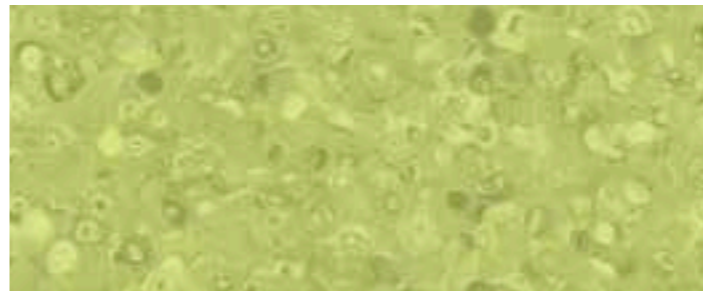
COBALT



CORAL



MOCCA



KIWI



CACTUS

# FORTIS FITT

FORTIS FITT IS A  
HEAVY DUTY DANCE  
AND FITNESS FLOOR  
FOR HIGH  
PERFORMANCE



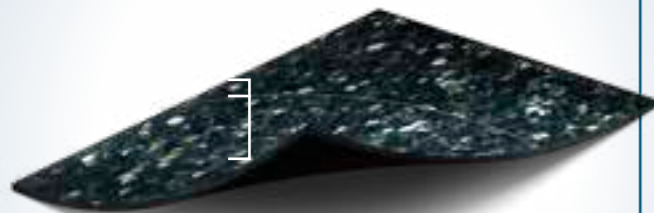
## PERFORMANCE, FEATURES & BENEFITS

Long life expectancy, iGuard surface – easy cleaning and maintenance, Excellent abrasion and scuff resistance, Non-directional design in vogue colors, Anti-bacterial, Dimensionally stable

## RECOMMENDED USAGE

Fitness halls | Stages | Exhibitions | Catwalks  
Dance halls | Studios

## CONSTRUCTION



iGuard PUR Surface  
Non-directional  
homogeneous layer

### DESCRIPTION

Construction		homogeneous
Binder content	EN ISO 10581	Type I.
Total thickness	EN ISO 24346	2.0 mm
Wear layer thickness	EN ISO 24340	2.0 mm
Width of roll	EN ISO 24341	2 m
Length of roll	EN ISO 24341	20 lm
Total weight	EN ISO 23997	2,8 kg/m <sup>2</sup>

### CLASSIFICATION

European classification	EN 685	class: 34/43
-------------------------	--------	--------------

### PERFORMANCE

Abrasion group	EN 660-1	T
Residual indentation	EN ISO 24343	max. 0.1 mm
Dimensional stability	EN ISO 23999	max. 0.4 %
Fire resistance	EN 13501-1	class: Bfl-s1
Slip resistance	DIN 51130	R9
	EN 13893	class: DS
Electrical resistance	EN 1815	< 2 kV
Chemical resistance	EN ISO 26987	✓
Light fastness	EN 20105 B02	grade 6
Castor chair resistance	EN ISO 4918	✓
Hygiene		bacterial resistant
Seaming method		hot or cold welding
Warranty		10 year



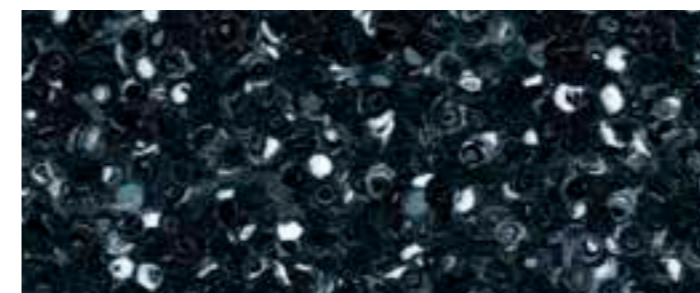
JADE



AMBER



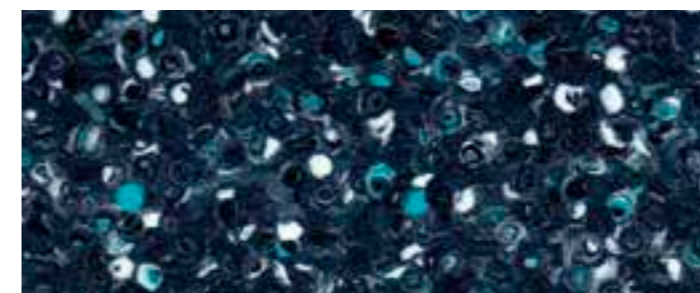
ROSA



ONYX



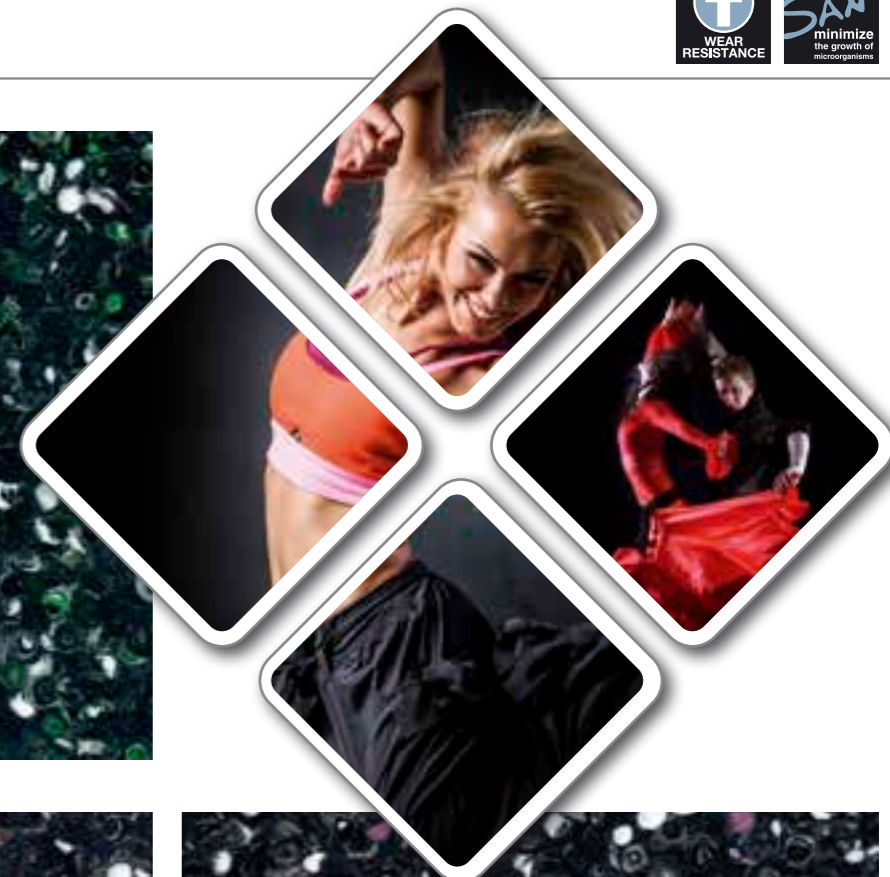
AMETHYST



TURQUOISE



NOX



FORTIS FITT

# TRIUMPH

HIGHLY DURABLE  
HOMOGENEOUS  
MULTIPURPOSE  
FLOORING



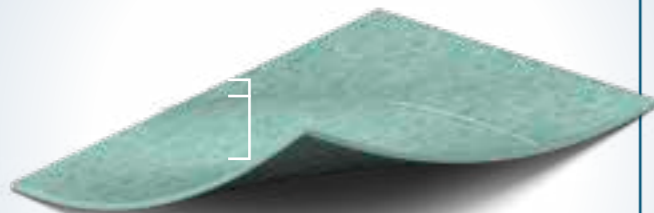
## PERFORMANCE, FEATURES & BENEFITS

Non-directional design, Ease of cleaning due to iGUARD Surface treatment, Good chemical protection, Bacterial resistant surface, Flexible structure for easy installation,

## RECOMMENDED USAGE

Healthcare | Education | Offices  
Other public areas

## CONSTRUCTION



iGuard PUR Surface  
Non-directional  
homogeneous layer

### DESCRIPTION

Construction		homogeneous
Binder content	EN ISO 10581	Type I.
Total thickness	EN ISO 24346	2.0 mm
Wear layer thickness	EN ISO 24340	2.0 mm
Width of roll	EN ISO 24341	2 m
Length of roll	EN ISO 24341	20 lm
Total weight	EN ISO 23997	2,9 kg/m <sup>2</sup>

### CLASSIFICATION

European classification	EN 685	class: 34/43
-------------------------	--------	--------------

### PERFORMANCE

Abrasion group	EN 660-1	T
Residual indentation	EN ISO 24343	max. 0.1 mm
Dimensional stability	EN ISO 23999	max. 0.4 %
Fire resistance	EN 13501-1	class: Bfl-s1
Slip resistance	DIN 51130	R9
	EN 13893	class: DS
Electrical resistance	EN 1815	< 2 kV
Chemical resistance	EN ISO 26987	✓
Light fastness	EN 20105 B02	grade 6
Thermal resistance	EN 12524	0.012 m2K/W
Castor chair resistance	EN ISO 4918	✓
Content of PCP	EN 12673	Does not contain
Formaldehyde emission	ENV 717-1	E1 (no emission)
Hygiene		bacterial resistant
Seaming method		heat or cold weld
Warranty		10 year



NEW

QUARTZ



NEW

ASH



NEW

OPAL



NEW

AZURE



NEW

IVORY



NEW

MINT



NEW

HONEY



NEW

VANILLA



HONEY

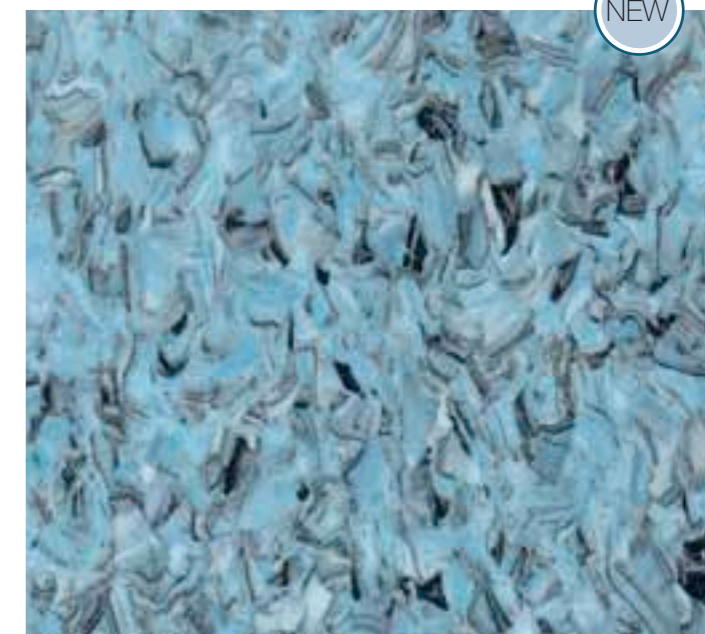
TRIUMPH

# CONDUCTO S

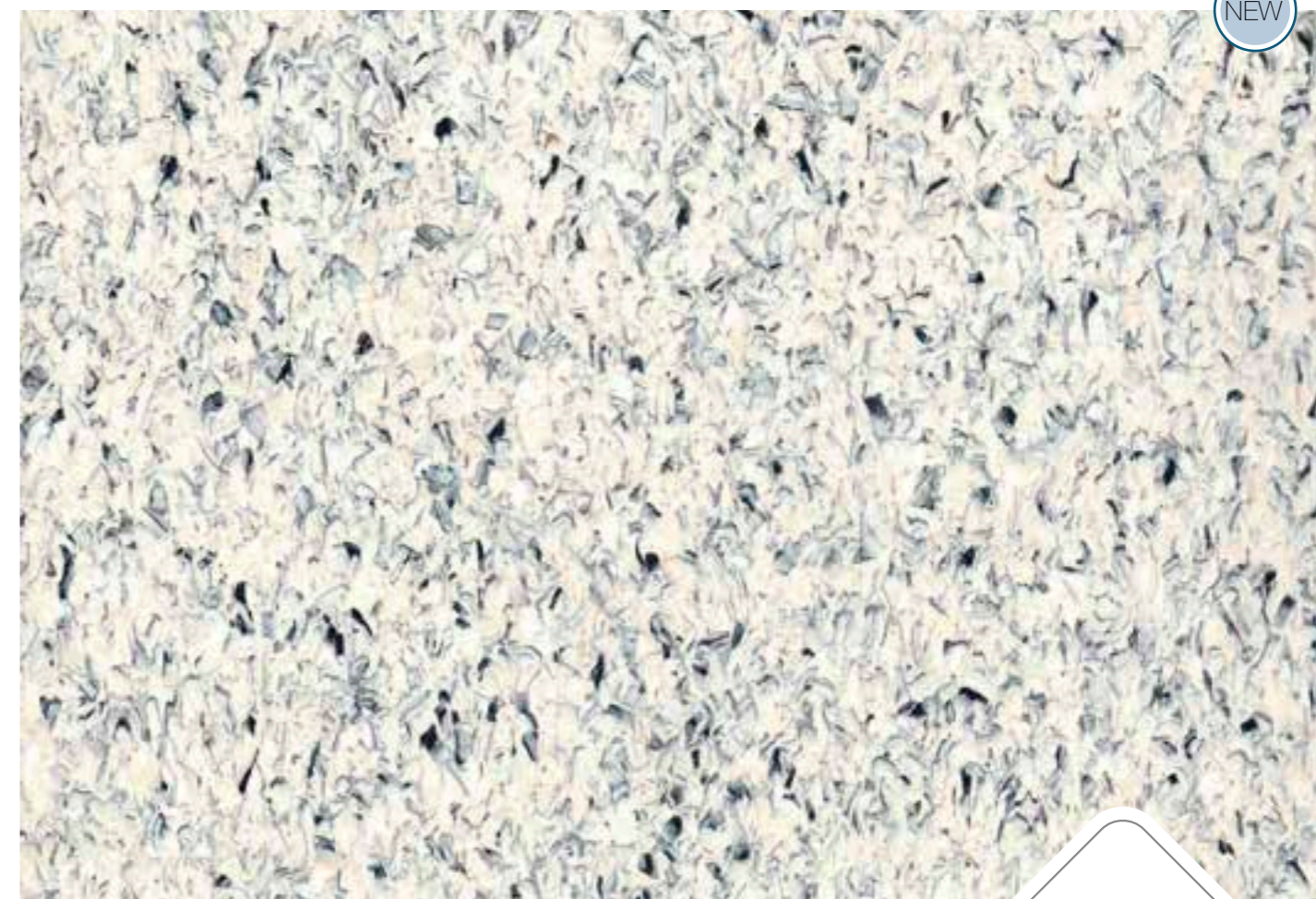
HIGH PERFORMANCE,  
HOMOGENEOUS  
FLOOR COVERING  
WITH ELECTROSTATIC  
CONDUCTIVE  
PROPERTIES



COAST



LAGOON



SAND

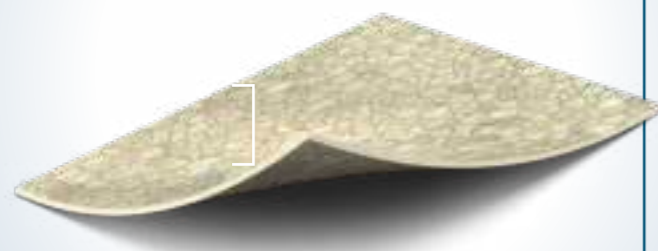
## PERFORMANCE, FEATURES & BENEFITS

Guarantees the lasting elimination of electrostatic charges. Due to the highest (group T) wear resistance, Grabo Conducto is a long-term solution. Hinder the aggregation of dust.

## RECOMMENDED USAGE

operating rooms in hospitals  
X-ray departments | laboratories  
computer rooms | electronics  
manufacturing | telecommunications, etc.

## CONSTRUCTION



Non-directional  
homogeneous layer

### DESCRIPTION

Construction		homogeneous
Binder content	EN ISO 10581	Type I.
Total thickness	EN ISO 24346	2.0 mm
Wear layer thickness	EN ISO 24340	2.0 mm
Width of roll	EN ISO 24341	2 m
Length of roll	EN ISO 24341	20 lm
Total weight	EN ISO 23997	2,8 kg/m <sup>2</sup>

### CLASSIFICATION

European classification	EN 685	class: 34/43
-------------------------	--------	--------------

### PERFORMANCE

Abrasion group	EN 660-1	T
Residual indentation	EN ISO 24343	max. 0.1 mm
Dimensional stability	EN ISO 23999	≤ 0.4 %
Fire resistance	EN 13501-1	class: Bfl-s1
Slip resistance	EN 13893	class: DS
Electrical resistance	EN 1815	< 2 kV
	EN 1081	$R \leq 1 \times 10^9 \Omega$
Chemical resistance	EN ISO 26987	✓
Light fastness	EN 20105 B02	grade 6
Castor chair resistance	EN ISO 4918	✓
Bacteria and fungi resistance	EN ISO 846:1999	does not favour growth
Warranty		10 year

SILVER KNIGHT  
ACOUSTIC 7  
ACOUSTIC PRO  
GRABOSAFE  
SILVER KNIGHT  
GRABOSAFE 20JSK  
ECOSAFE  
DIAMOND STANDART

# HETEROGENEOUS

COMMERCIAL SHEET FLOOR COVERINGS

# SILVER KNIGHT



THE MOST HYGENICAL VINYL SHEET FLOORING

**PERFORMANCE, FEATURES & BENEFITS**  
 Grabo Silver Knight eliminates harmful bacteria without the use of chemicals. Grabo Silver Knight has a self-disinfecting surface reached by a unique double-defense-line.

**RECOMMENDED USAGE**  
 Healthcare | Education | Hospitality Offices | Retail

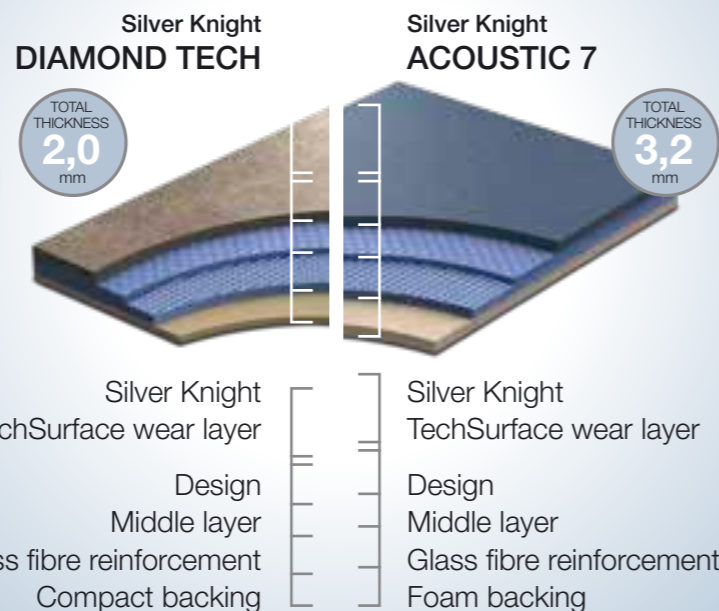


DESCRIPTION		Silver Knight Diamond Tech	Silver Knight Acoustic 7
Construction		compact heterogeneous	heterogeneous
Total thickness	EN ISO 24346	2,0 mm	3,2 mm
Wear layer thickness	EN ISO 24340	0,7 mm	0,7 mm
Width of roll	EN ISO 24341	2 m	2 m
Length of roll	EN ISO 24341	20 lm	20 lm
Total weight	EN ISO 23997	2,8 kg/m <sup>2</sup>	2,6 kg/m <sup>2</sup>

CLASSIFICATION			
European classification	EN 685	class: 34/43	class: 34/42

PERFORMANCE			
Abrasion group	EN 660-1	T	T
Residual indentation	EN ISO 24343	max. 0,1 mm	max. 0,2 mm
Dimensional stability	EN ISO 23999	max. 0,2 %	max. 0,2 %
Fire resistance	EN 13501-1	class: Bfl-s1	class: Bfl-s1
	ASTM E 648/ 662	class: Class1	-
	Gost 30402-94	G1	G1
Impact sound reduction	EN ISO 717-2	-	$\Delta L_w=19$ dB
Slip resistance	DIN 51130	R9	R9
Electrical resistance	EN 1815	< 2 kV	< 2 kV
	EN 1081	$\leq 10^9 \Omega$	$\leq 10^9 \Omega$
Chemical resistance	EN ISO 26987	✓	✓
	ASTM F925-02	✓	✓
Bacterial resistance	EN ISO846:1999	✓	✓
Antimicrobial activity	ISO 27447	>99 %	>99 %
Light fastness	EN 20105 B02	grade 6	grade 6
Castor chair resistance	EN ISO 4918	✓	✓
Surface treatment		TECHSurface	TECHSurface
Anti bacterial and fungicid treatment		Silver Knight	Silver Knight
Seaming method		hot or cold welding	hot or cold welding
Warranty		15 year	15 year

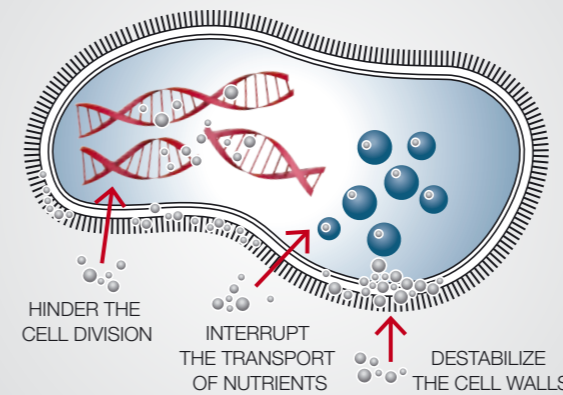
## CONSTRUCTION



## 1<sup>ST</sup> LINE OF DEFENSE

**NanoSilver – bacteria is destroyed without the use of chemicals**

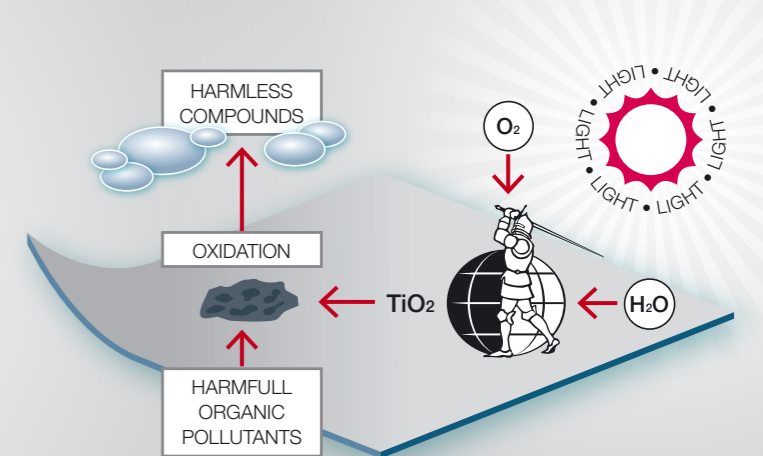
The disinfecting properties of silver have been known for more than 3000 years. The silver destroys or inactivates microbes such as bacteria, fungi and viruses. This effect of silver results from the ongoing slow diffusion of silver ions.



## 2<sup>ND</sup> LINE OF DEFENSE

**NanoTiO<sub>2</sub> – helps to decompose germs**

Titanium dioxide is a photocatalyst, operating similar to chlorophyllian photosynthesis which helps transforming harmful substances into harmless compounds through a chemical oxidation process without being consumed.



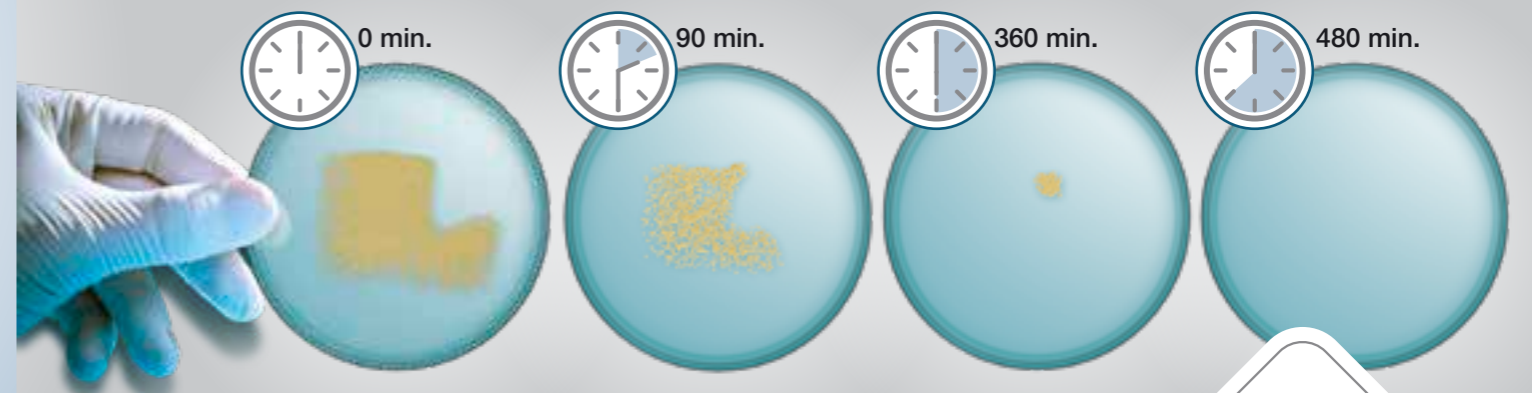
## GRABO SILVER KNIGHT IS A LOW-MAINTENANCE AND TROUBLE-FREE FLOORING

### More effective infection control with easy cleaning

Due to the photocatalytic reaction, the surface energy is increased so dirt adheres less and is easier to remove resulting in use of less cleaning products. Grabo Silver Knight is active round the clock, 24/7, and helps to reduce microbial contamination in between cleanings.

### Improve indoor air quality

Through photocatalysis odors are decomposed into harmless constituent parts. It works in the same way for pollutants as well, such as nicotine or formaldehyde and unpleasant smells e.g. ammonia or fish odor. Grabo Silver Knight is the ultimate, environmentally sound choice for any facilities.





455-881



455-869



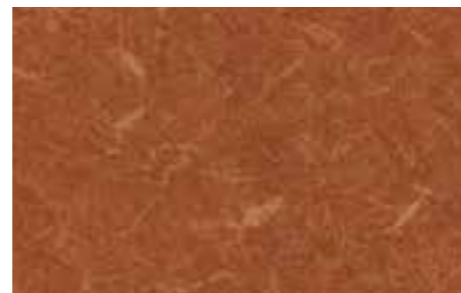
455-865



455-867



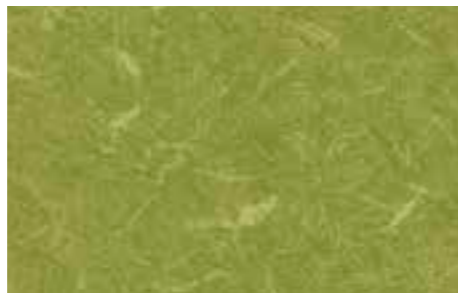
455-884



455-866



455-859



455-886



455-885



455-858



455-856



455-857



386-856



386-870



386-852



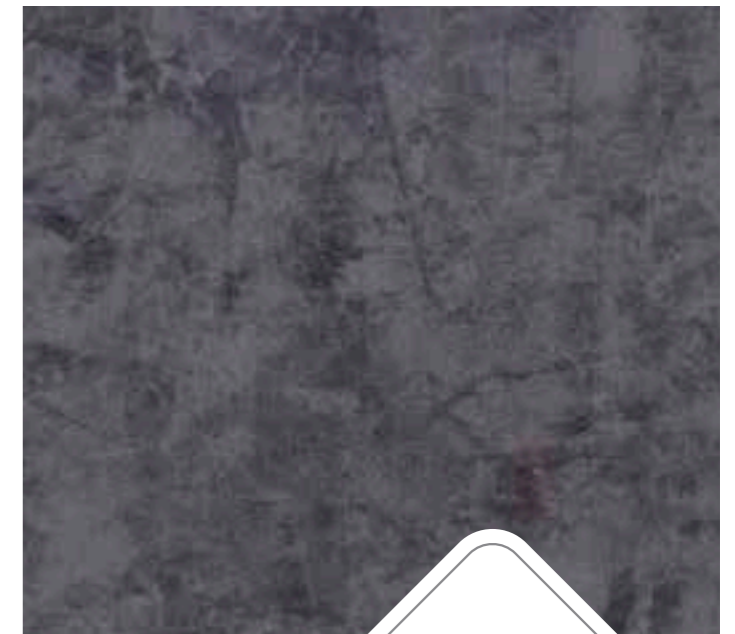
386-871



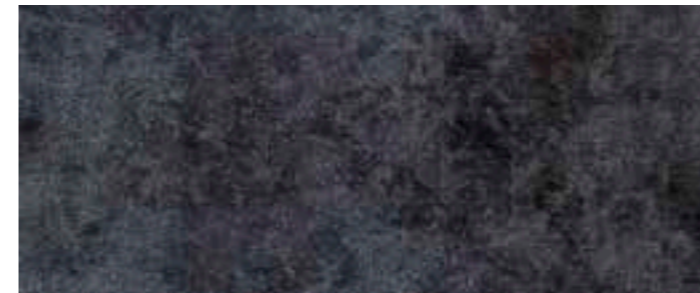
386-857



386-867



386-868



386-869



2956



2940



9170



1343



1895



3258



6108



2075-378



2518-371



2561-371



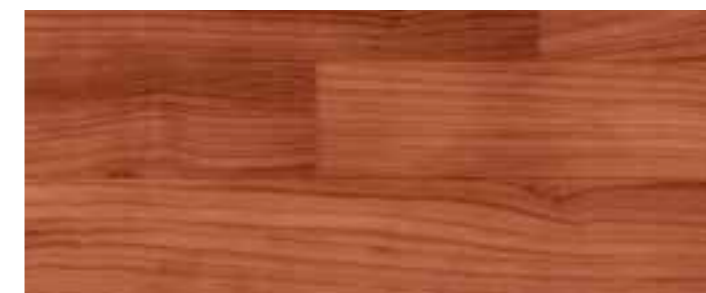
3151-378



1141-371



1151-371



2085-378



2239-371

# SILVER KNIGHT | ACOUSTIC 7 NATURAL



1001-384-870



1001-384-874



1003-384-875



1189-384-873



2561-384-867



1243-384-869



3151-378-858



2085-378-856



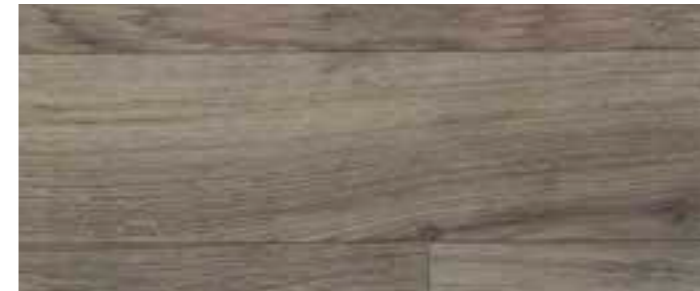
2075-378-855



2561-371-651



1141-371-868



1151-371-869



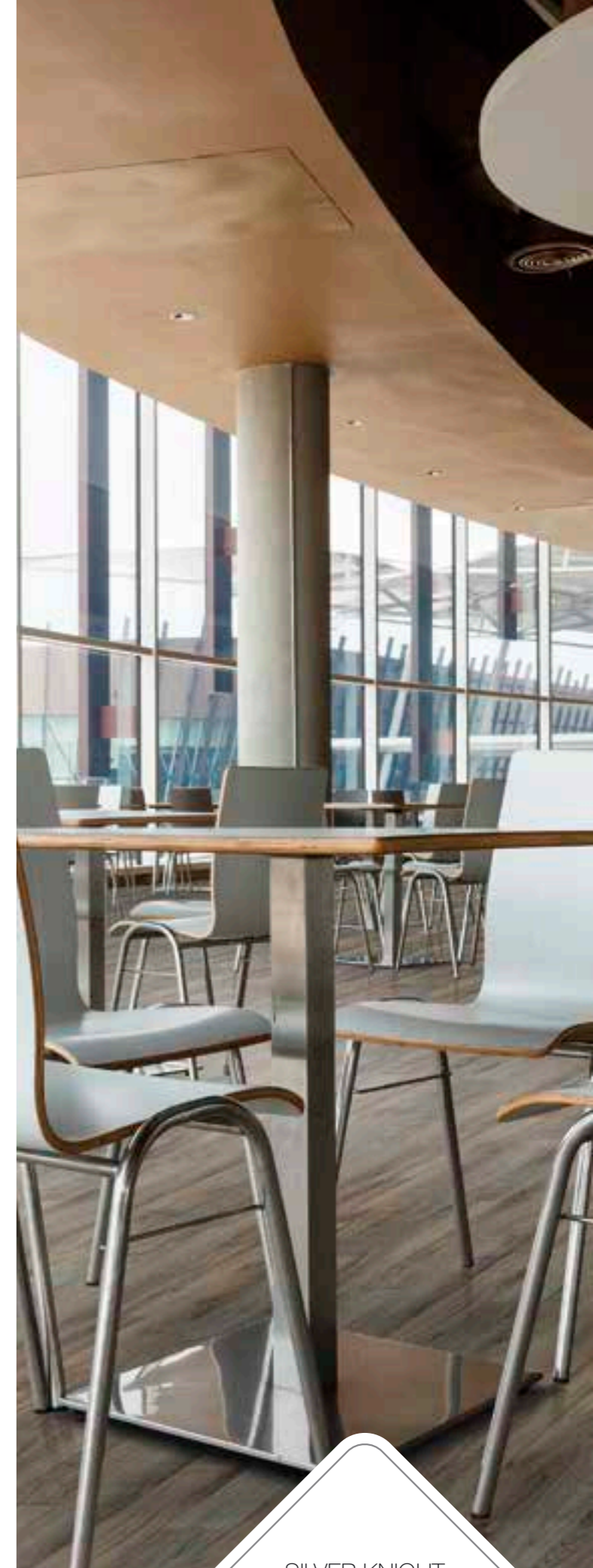
2519-371-662



2518-371-871



2239-371-855



SILVER KNIGHT

# ACOUSTIC 7

PREMIUM  
ACOUSTIC  
FLOOR  
COVERING



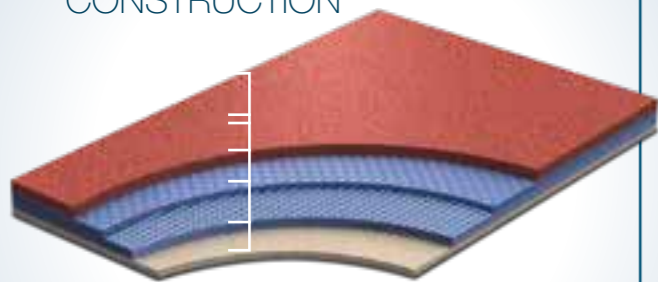
## PERFORMANCE, FEATURES & BENEFITS

Excellent acoustic properties ( $\geq 19$  dB),  
Excellent foot comfort, Dimensionally stable,  
Increased lifespan, Antistatic, Anti-bacterial,  
10 year warranty

## RECOMMENDED USAGE

Healthcare | Education | Library  
Corporate | Retail | Anywhere acoustical property  
is needed

## CONSTRUCTION



CLP Wear layer  
Design  
Compact layer  
Glass fibre reinforcement  
Foam backing

## DESCRIPTION

Construction		heterogeneous
Total thickness	EN ISO 24346	3,2 mm
Wear layer thickness	EN ISO 24340	0,7 mm
Width of roll	EN ISO 24341	2 m
Length of roll	EN ISO 24341	25 lm
Total weight	EN ISO 23997	2,6 kg/m <sup>2</sup>

## CLASSIFICATION

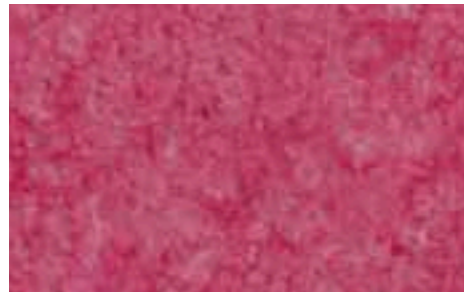
European classification	EN 685	class: 34/42
-------------------------	--------	--------------

## PERFORMANCE

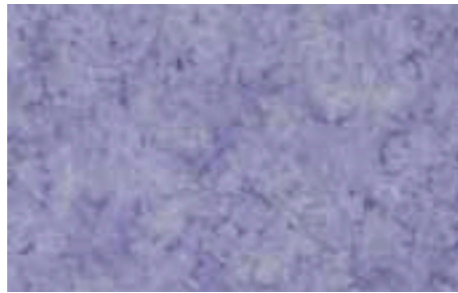
Abrasion group	EN 660-1	T
Residual indentation	EN ISO 24343	max. 0,2 mm
Dimensional stability	EN ISO 23999	max. 0,2 %
Fire resistance	EN 13501-1	class: Bfl-s1
	BS 476	class: Class1
	Gost 30402-94	class: G1
Impact sound reduction	EN ISO 717-2	$\Delta L_w = 19$ dB
Slip resistance	DIN 51130	R9
	AS/NZS 4586	R10
Electrical resistance	EN 1815	< 2 kV
	EN 1081	$\leq 10^9 \Omega$
Chemical resistance	EN ISO 26987	✓
Bacterial resistance	EN ISO846:1999	✓
Light fastness	EN 20105 B02	grade 6
Castor chair resistance	EN ISO 4918	✓
Surface treatment		CLP
Anti bacterial and fungicid treatment		graboSAN
Seaming method		hot or cold welding
Warranty		10 year



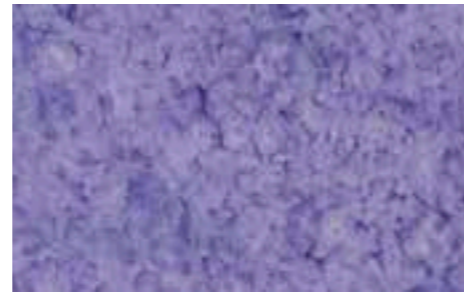
# ACOUSTIC 7 MINERAL



383-00-687-275



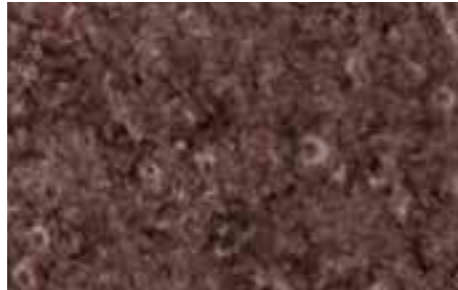
383-00-689-275



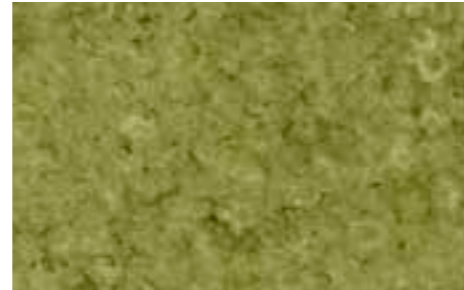
383-00-684-275



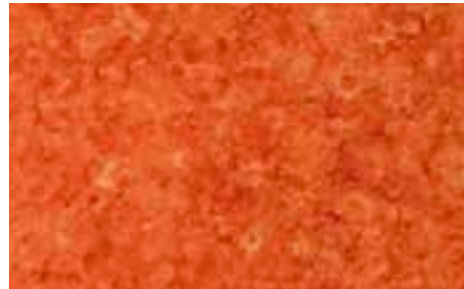
383-00-675-275



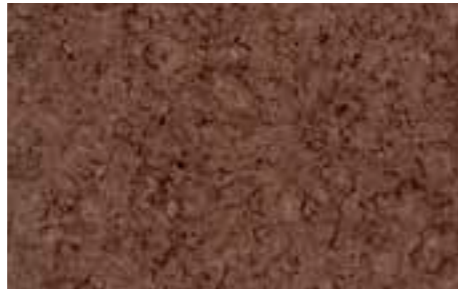
383-00-667-275



383-00-661-275



383-00-665-275



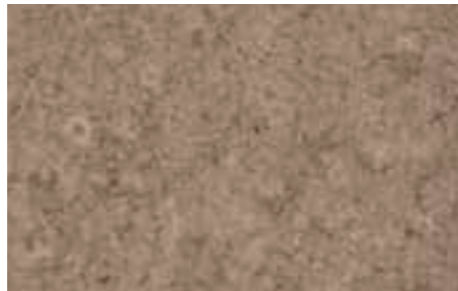
383-00-679-275



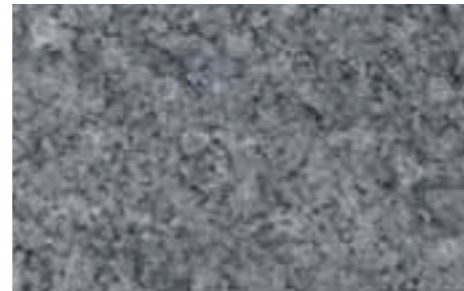
383-00-678-275



383-00-664-275



383-00-674-275



383-00-672-275



383-00-653-275



383-00-651-275



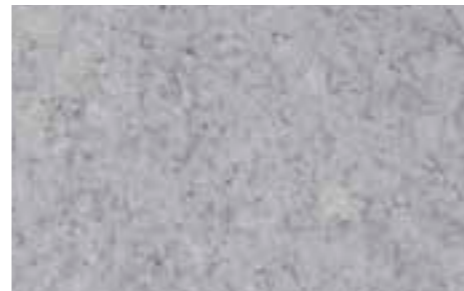
383-00-669-275



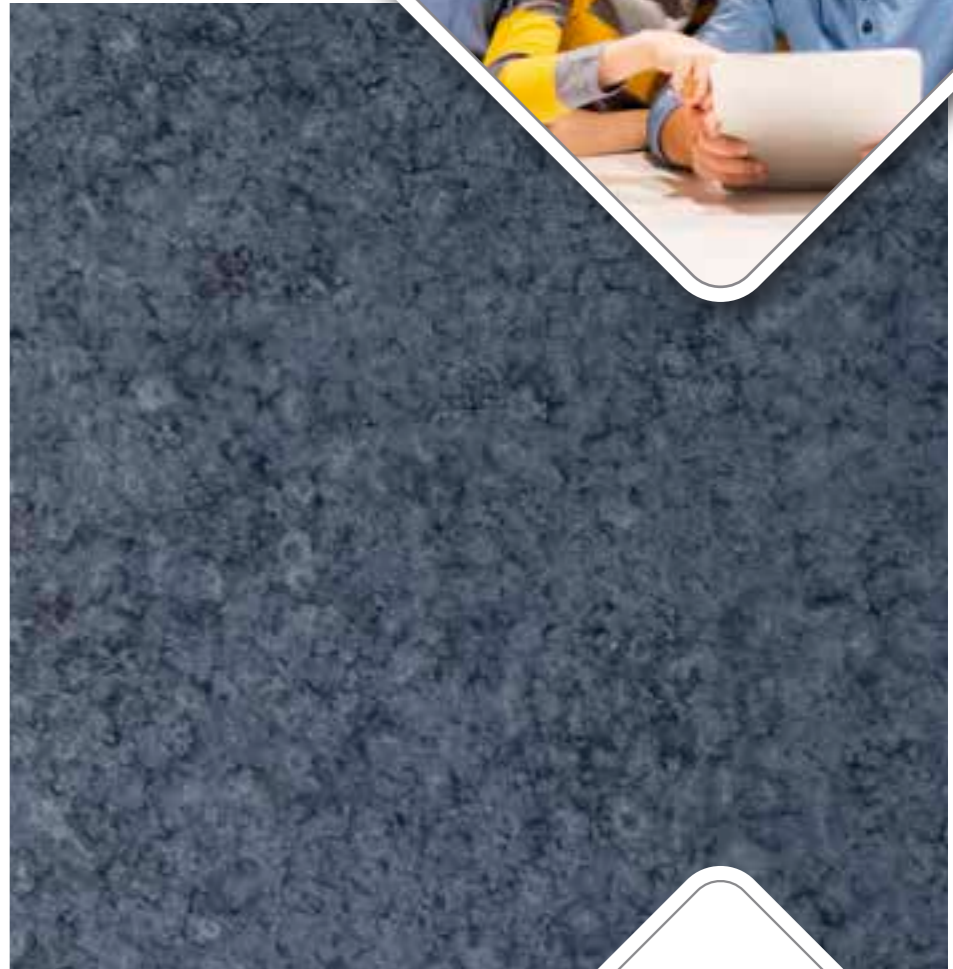
383-00-677-275



383-00-657-275



383-00-671-275



383-00-659-275



# ACOUSTIC 7 MOSAIC



# ACOUSTIC 43 UNI



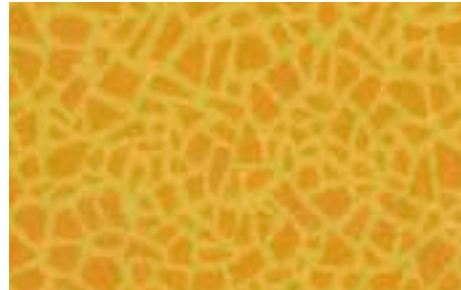
388-656-275



388-669-275



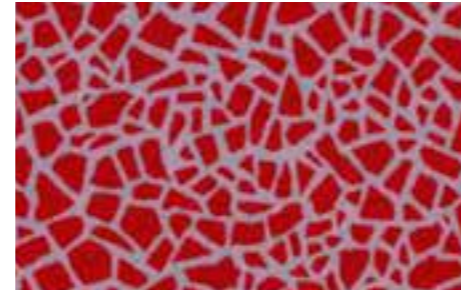
388-671-275



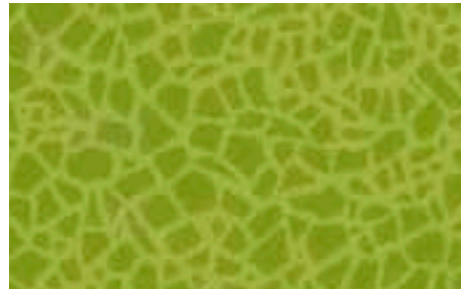
388-664-275



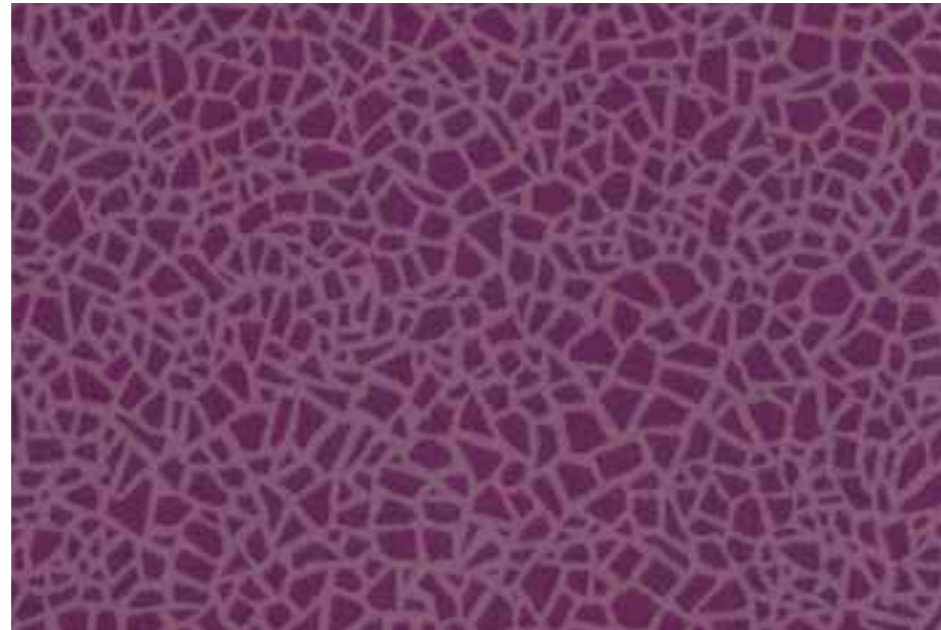
388-665-275



388-674-275



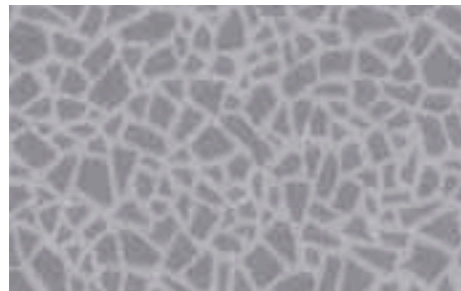
388-662-275



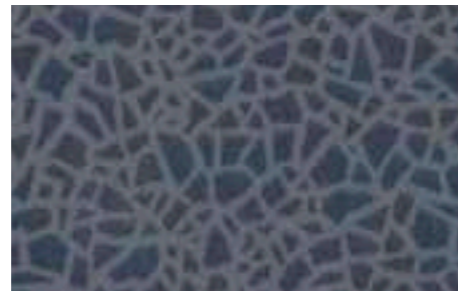
388-668-275



388-658-275



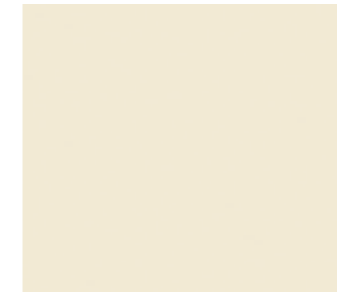
388-670-275



388-657-275



388-677-275



1008-275



2028-275



2956-275



2940-275



2089-275



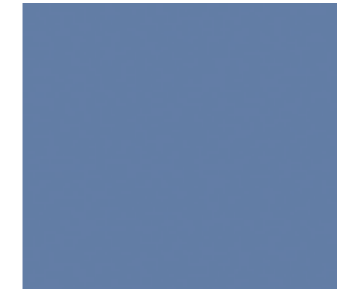
9170-275



3380-275



4220-275



6110-275



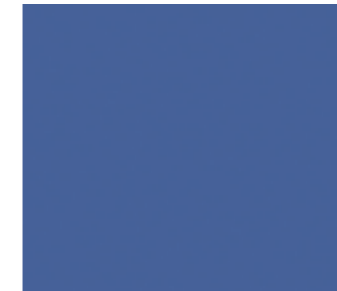
7410-275



3070-275



3319-275



6180-275



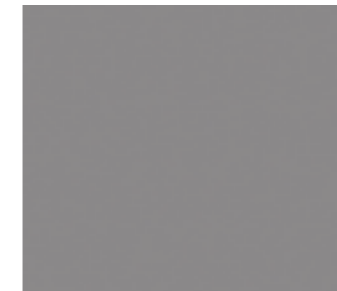
6150-275



1343-275



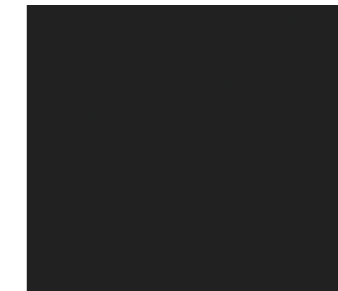
1194-275



1290-275



1895-275



1991-275



ACOUSTIC 7

# ACOUSTIC PRO



HIGH PERFORMANCE  
ACOUSTICAL  
FLOOR COVERING

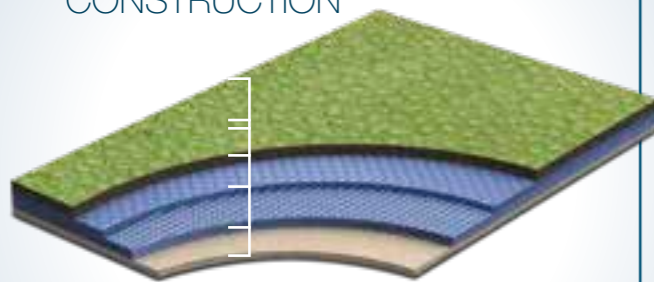
## PERFORMANCE, FEATURES & BENEFITS

Excellent acoustic properties ( $\geq 19$  dB),  
Excellent foot comfort, Dimensionally stable,  
Increased lifespan, Antistatic, Anti-bacterial,  
7 year warranty

## RECOMMENDED USAGE

Healthcare | Education | Hospitality  
Corporate | Retail | Anywhere acoustical property  
is needed

## CONSTRUCTION



PUR Surface Wear layer  
Design  
Compact layer  
Glass fibre reinforcement  
Foam backing

## DESCRIPTION

Construction		heterogeneous
Total thickness	EN ISO 24346	3,2 mm
Wear layer thickness	EN ISO 24340	0,55 mm
Width of roll	EN ISO 24341	2 m
Length of roll	EN ISO 24341	25 lm
Total weight	EN ISO 23997	2,5 kg/m <sup>2</sup>

## CLASSIFICATION

European classification	EN 685	class: 33/42
-------------------------	--------	--------------

## PERFORMANCE

Abrasion group	EN 660-1	T
Residual indentation	EN ISO 24343	max. 0,2 mm
Dimensional stability	EN ISO 23999	max. 0,2 %
Fire resistance	EN 13501-1	class: Bfl-s1
	BS 476	class: Class1
	Gost 30402-94	class: G1
Impact sound reduction	EN ISO 717-2	$\Delta L_w = 19$ dB
Slip resistance	DIN 51130	R9
	AS/NZS 4586	R10
Electrical resistance	EN 1815	< 2 kV
	EN 1081	$\leq 10^9 \Omega$
Chemical resistance	EN ISO 26987	✓
Bacterial resistance	EN ISO846:1999	✓
Light fastness	EN 20105 B02	grade 6
Castor chair resistance	EN ISO 4918	✓
Surface treatment		PUR Surface
Anti bacterial and fungicid treatment		graboSAN
Seaming method		hot or cold welding
Warranty		7 year



ACOUSTIC PRO

# ACOUSTIC PRO



4313-458-4



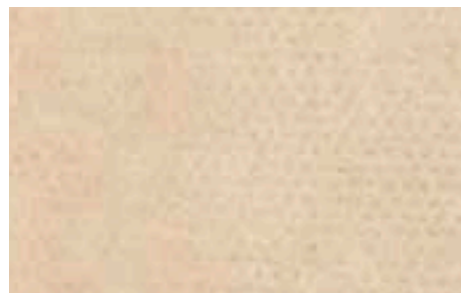
4259-501-5



4259-503-5



4259-504-5



4313-471-4



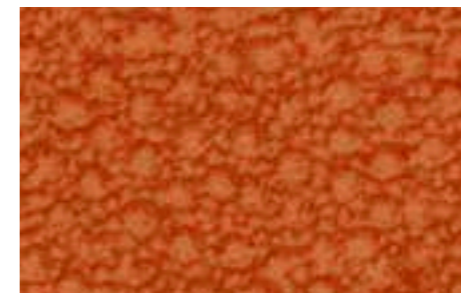
4313-470-4



4313-467-4



4276-451-4



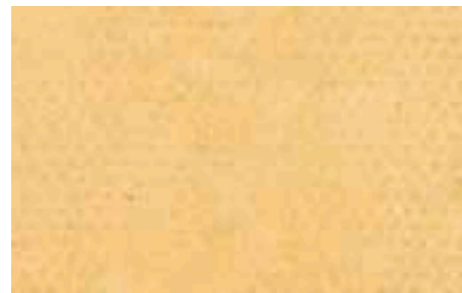
4276-465-4



4276-462-4



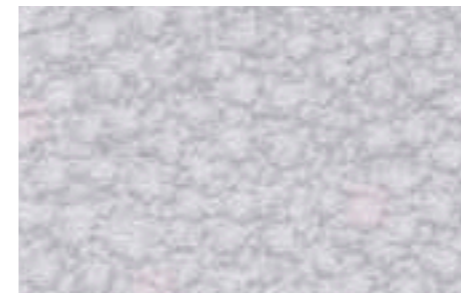
4313-460-4



4313-464-4



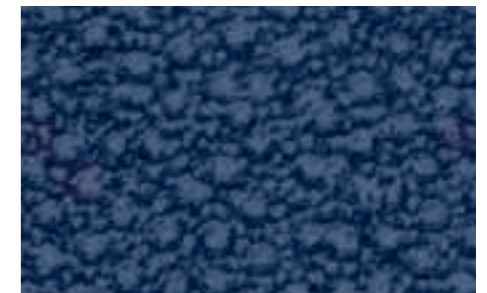
4313-465-4



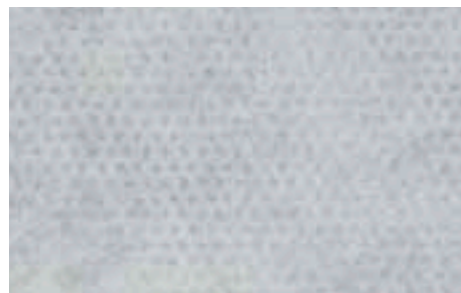
4276-456-4



4276-472-4



4276-459-4



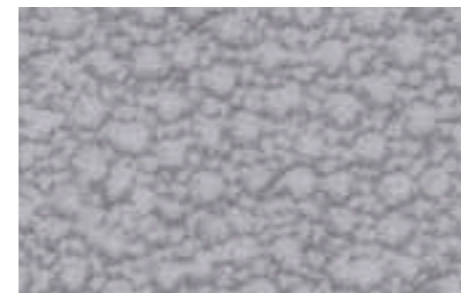
4313-472-4



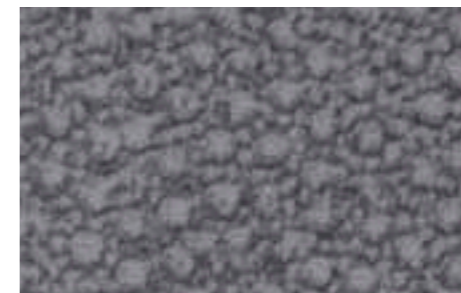
4313-473-4



4313-474-4



4276-470-4



4276-471-4



# GRABOSAFE SILVER KNIGHT



HIGH PERFORMANCE  
SAFETY  
FLOOR COVERING

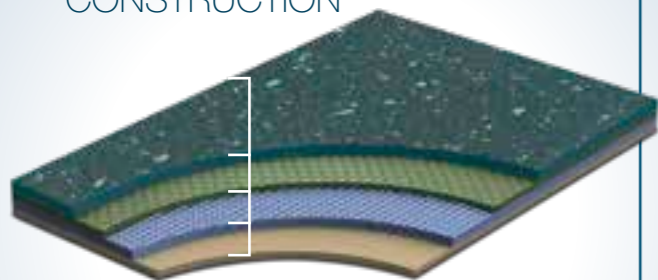
## PERFORMANCE, FEATURES & BENEFITS

Destroys harmful bacteria, Excellent slip resistance, Durability, Premium viies backing, Flexibility, 10 year warranty

## RECOMMENDED USAGE

Healthcare | Education | Entrances | Receptions  
Corridors | Ramps | Elevators | Kitchens

## CONSTRUCTION



- Silver Knight
- Tech Surface wear layer
- PVC Layer
- Glass fibre reinforcement
- Flexyback®
- non-woven backing

### DESCRIPTION

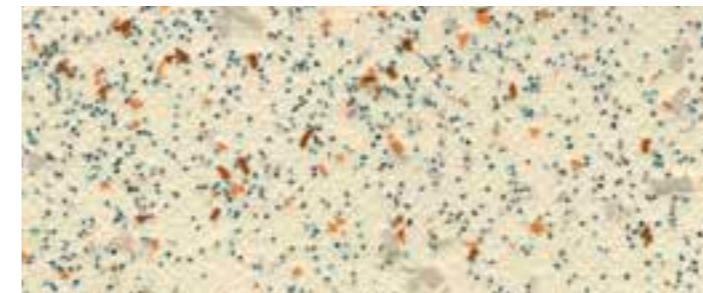
Construction		compact heterogeneous
Total thickness	EN ISO 24346	2,0 mm
Wear layer thickness	EN ISO 24340	0,7 mm
Width of roll	EN ISO 24341	2 m
Length of roll	EN ISO 24341	20 lm
Total weight	EN ISO 23997	2,6 kg/m <sup>2</sup>

### CLASSIFICATION

European classification	EN 685	class: 34/43
-------------------------	--------	--------------

### PERFORMANCE

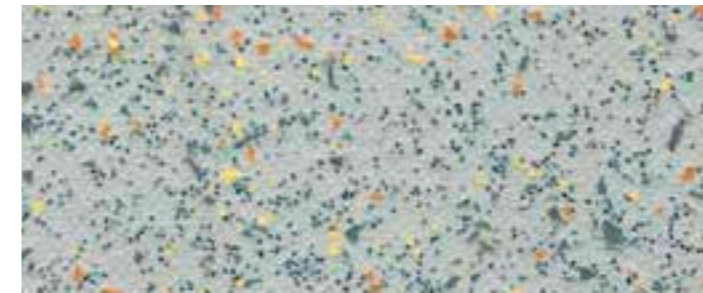
Abrasion group	EN 660-1	T
Residual indentation	EN ISO 24343	max. 0,1 mm
Dimensional stability	EN ISO 23999	max. 0,2 %
Fire resistance	EN 13501-1	Bfl-s
Slip resistance	RRL Pendulum Test	>36 (wet test)
	DIN 51130	R10
Chemical resistance	EN ISO 26987	✓
Bacterial resistance	EN ISO846:1999	✓
Light fastness	EN 20105 B02	grade 6
Castor chair resistance	EN ISO 4918	✓
Surface treatment		Tech Surface
Anti bacterial and fungicid treatment		Silver Knight
Seaming method		hot or cold welding
Warranty		10 year



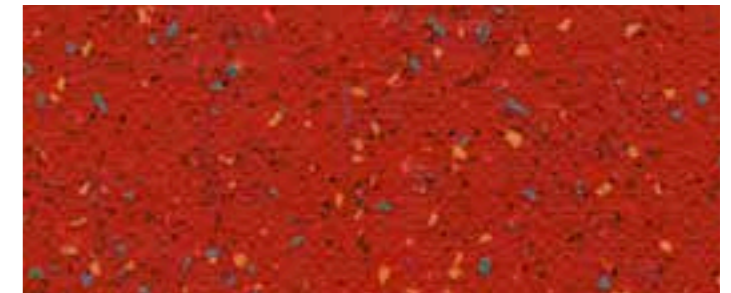
1193-670/17-279



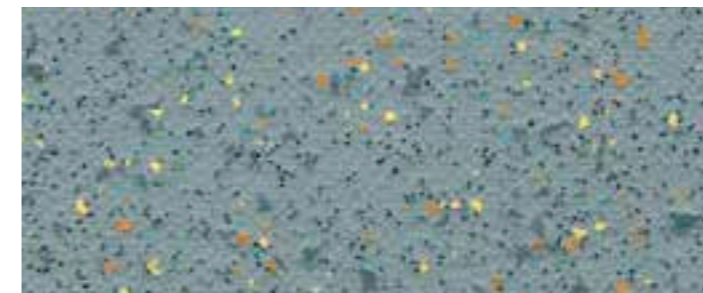
2294-670/17-279



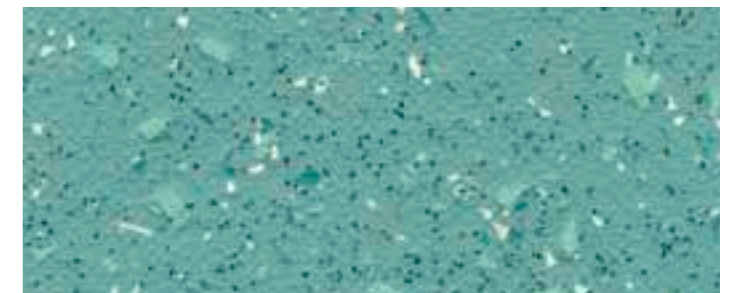
1288-671/17-279



4934-675/17-279



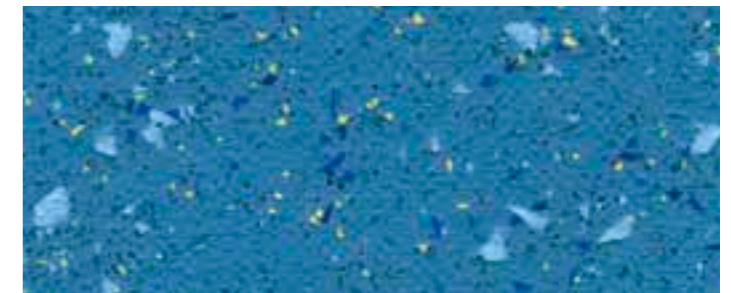
1279-671/17-279



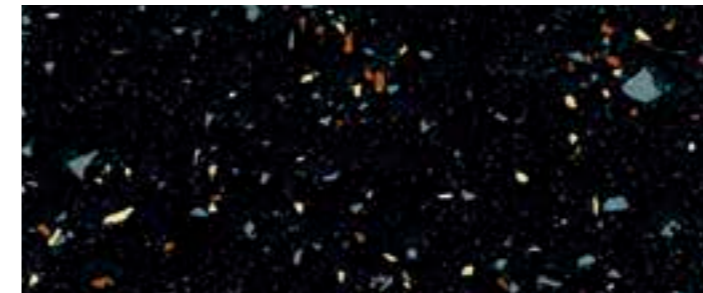
7088-676/17-279



1294-676/17-279



6339-673/17-279



1991-674/17-279



1775-672/17-279

GRABOSAFE  
SILVER KNIGHT

# GRABOSAFE SILVER KNIGHT NATURAL



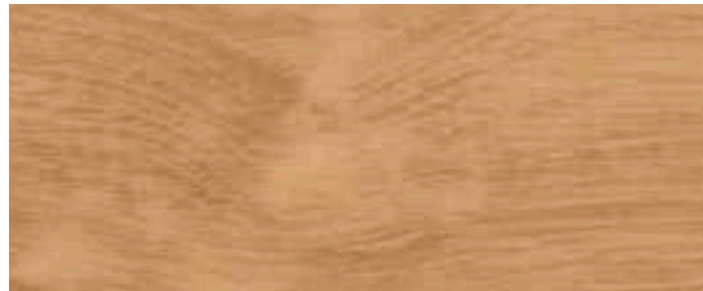
1001-384-851



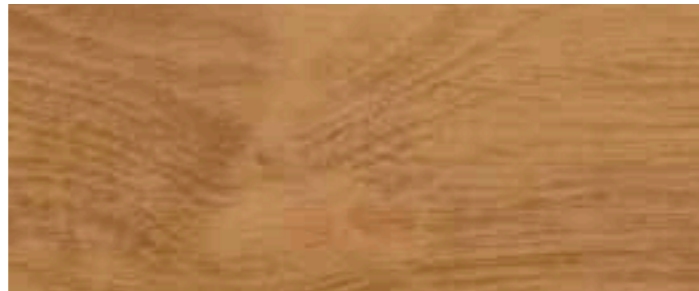
1003-384-856



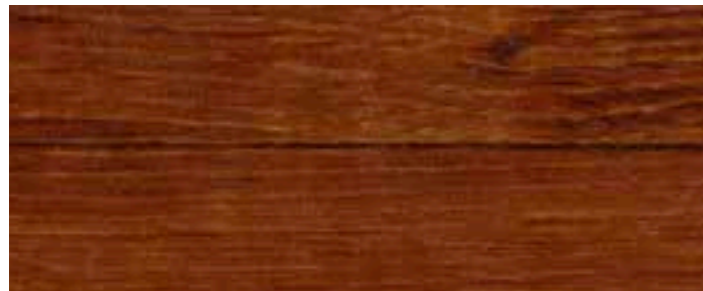
2561-384-867



2086-384-855



2096-384-857



2239-384-868



1243-384-869

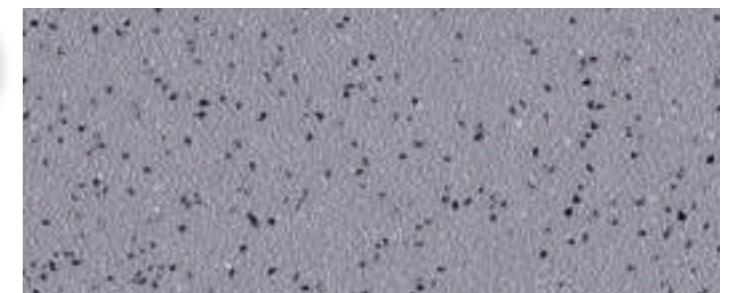


GRABOSAFE  
SILVER KNIGHT

# GRABOSAFE 20 JSK



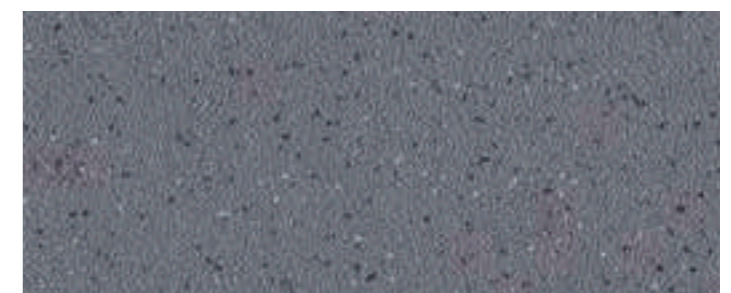
HIGH PERFORMANCE  
SAFETY  
FLOOR COVERING



1260-03



2251-03



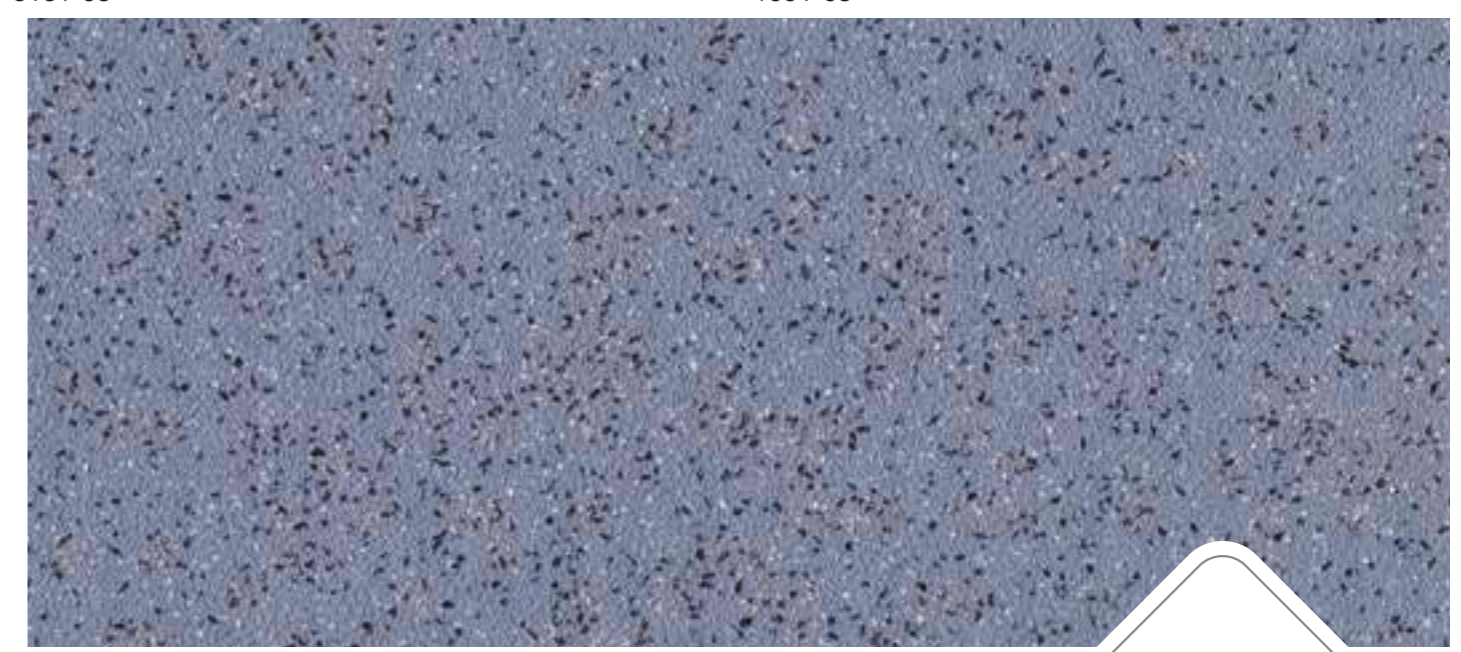
6091-03



5161-03



1991-03



6343-03

## PERFORMANCE, FEATURES & BENEFITS

Excellent slip resistance,  
Excellent durability, Dimensionally stable,  
Ant-bacterial, 10 year warranty

## RECOMMENDED USAGE

Wet areas | Ramps | Food prep areas  
Anywhere safety floor is needed

### DESCRIPTION

Construction		compact heterogeneous
Total thickness	EN ISO 24346	2,0 mm
Wear layer thickness	EN ISO 24340	0,9 mm
Width of roll	EN ISO 24341	2 m
Length of roll	EN ISO 24341	20 lm
Total weight	EN ISO 23997	2,6 kg/m <sup>2</sup>

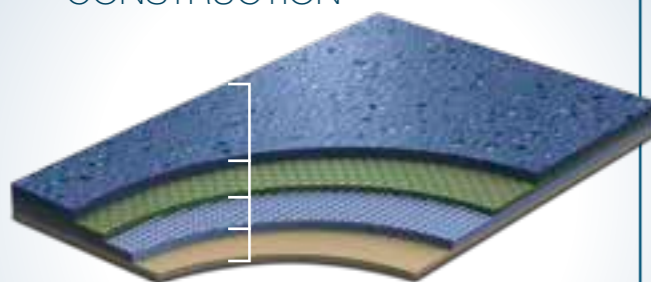
### CLASSIFICATION

European classification	EN 685	class: 34/43
-------------------------	--------	--------------

### PERFORMANCE

Abrasion group	EN 660-1	T
Residual indentation	EN ISO 24343	max. 0,1 mm
Dimensional stability	EN ISO 23999	max. 0,2 %
Fire resistance	EN 13501-1	class: Cfl-s1
	BS 476	class: 1
	DIN 4102/ÖNORM	class: B1
Slip resistance	Gost 30402-94	class: G1
	DIN 51130	R10
	DIN 51097	C
	AS/NZS 4586:2004	R11
Abrasion resistance	EN 13893	class: DS
	ISO 9352	-0,25 g/1000 circle
Shore A hardness	ISO 868	90
Chemical resistance	EN ISO 26987	✓
Bacterial resistance	EN ISO846:1999	✓
Light fastness	EN 20105 B02	grade 6
Castor chair resistance	EN ISO 4918	✓
Surface treatment		CLP
Anti bacterial and fungicid treatment		graboSAN
Seaming method		hot or cold welding
Warranty		10 year

## CONSTRUCTION



- CLP wear layer
- PVC Layer
- Glass fibre reinforcement
- Flexyback®
- non-woven backing

GRABOSAFE  
20 JSK

# ECOSAFE

HIGH PERFORMANCE  
SAFETY  
FLOOR COVERING



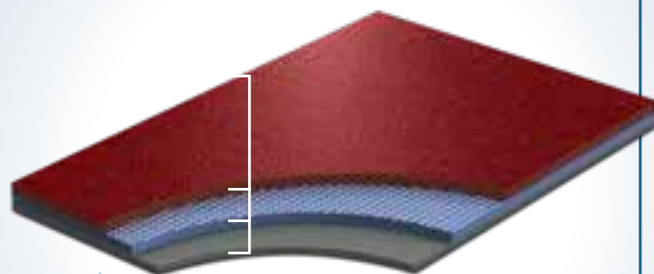
## PERFORMANCE, FEATURES & BENEFITS

Excellent slip resistance, Cost effective,  
Great color range, Dimensionally stable,  
Anti-bacterial, 7 year warranty

## RECOMMENDED USAGE

Wet areas | Ramps | Food prep areas  
Anywhere safety floor is needed

## CONSTRUCTION



Easy Care wear layer

Glass fibre reinforcement  
PVC backing

### DESCRIPTION

Construction	compact heterogeneous	
Total thickness	EN ISO 24346	2,0 mm
Wear layer thickness	EN ISO 24340	0,7 mm
Width of roll	EN ISO 24341	2 m
Length of roll	EN ISO 24341	20 lm
Total weight	EN ISO 23997	2,7 kg/m <sup>2</sup>

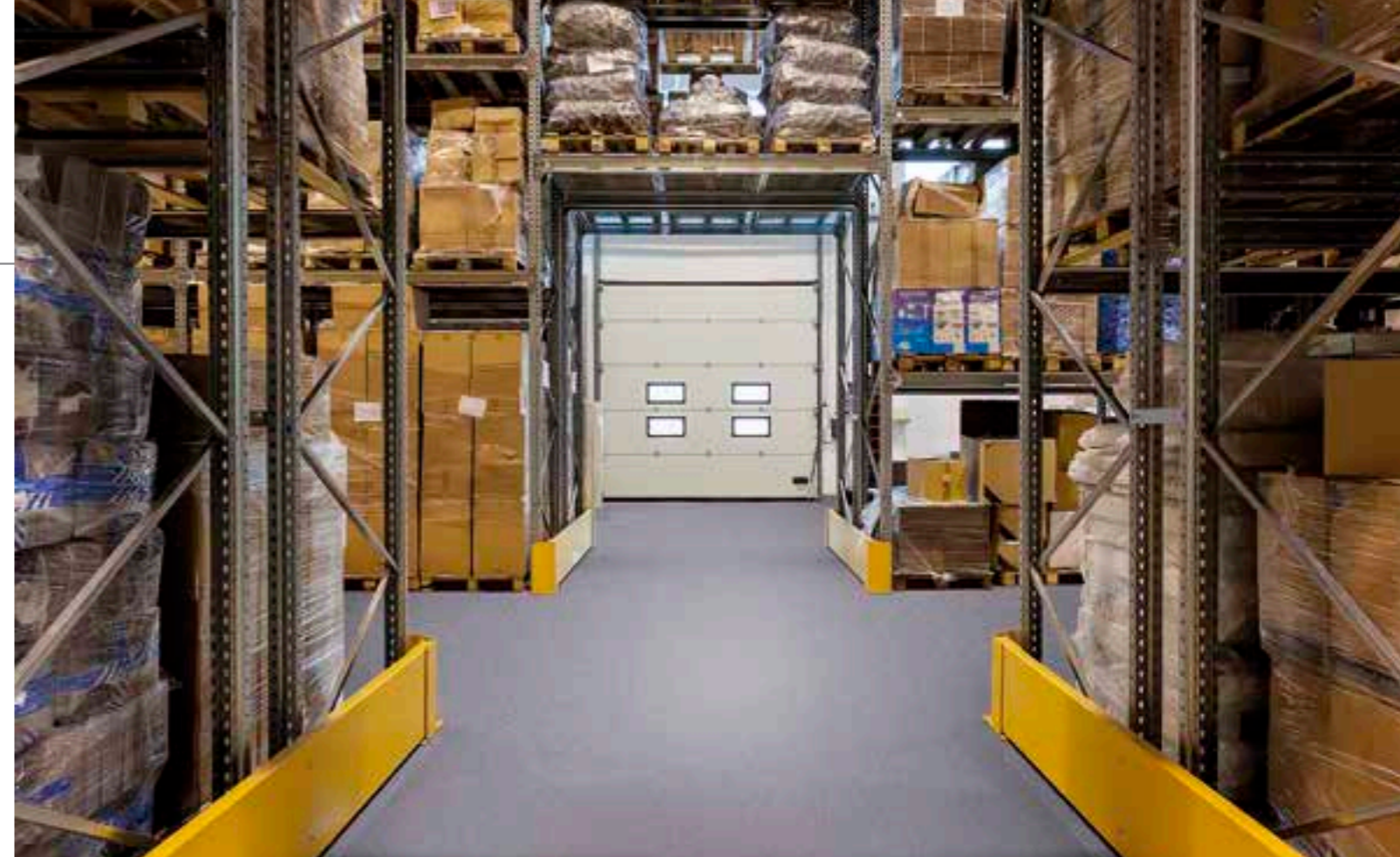
### CLASSIFICATION

European classification	EN 685	class: 34/43
-------------------------	--------	--------------

### PERFORMANCE

Abrasion group	EN 660-1	T
Residual indentation	EN ISO 24343	max. 0,1 mm
Dimensional stability	EN ISO 23999	max. 0,2 %
Fire resistance	EN 13501-1	class: Bfl-s1
	DIN 4102/ÖNORM	class: B1
	ASTM E 648/662	class: Class1/pass
Slip resistance	Gost 30402-94	class: G1
	DIN 51130	R10
	ASTM D2047-99	dry: 0,92/wet: 0,84
Abrasion resistance (H-18 wheel)	EN 13893	class: DS
	RRL Pendulum Test	>36 (wet test)
	ASTM D3884-01	-0,19 g/1000 circle
Abrasion resistance	ISO 9352	-0,25 g/1000 circle
Chemical resistance	EN ISO 26987	✓
	ASTM F925-02	✓
Light fastness	EN 20105 B02	grade 6
Castor chair resistance	EN ISO 4918	✓
Surface treatment	Easy Care	
Anti bacterial and fungicid treatment	graboSAN	
Seaming method	hot or cold welding	
Warranty	7 year	

# ECOSAFE



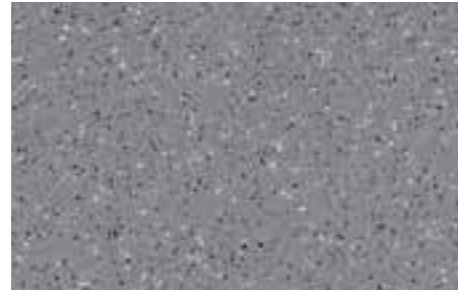
2942-20-279



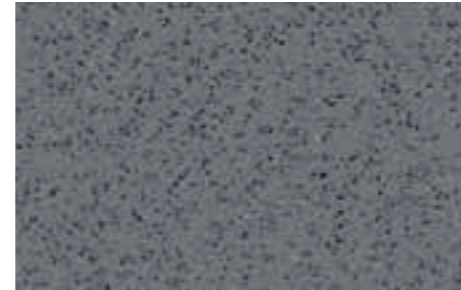
2036-20-279



1137-20-279



1260-20-279



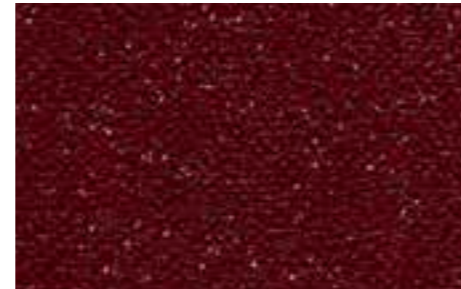
1173-20-279



5161-20-279



5025-20-279



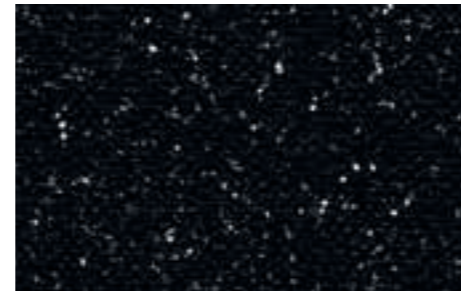
4740-20-279



1424-20-279



1387-20-279



1991-20-279



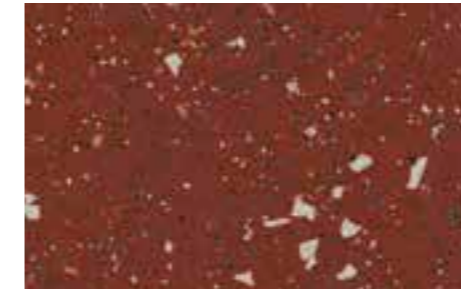
7093-20-279



6342-20-279



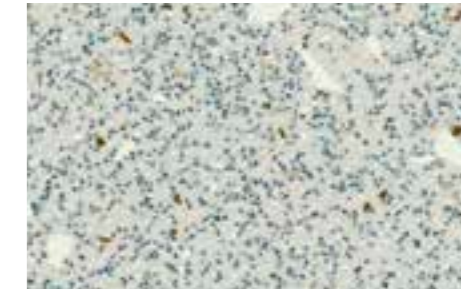
6460-20-279



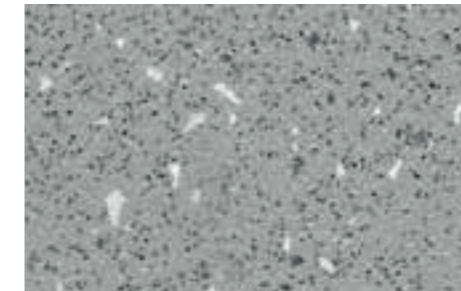
4970-665



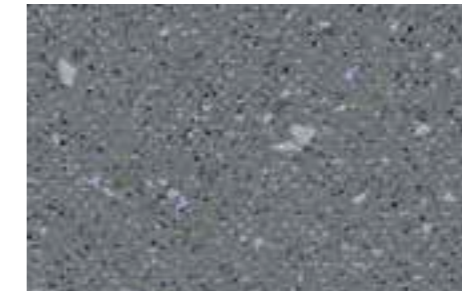
2954-659



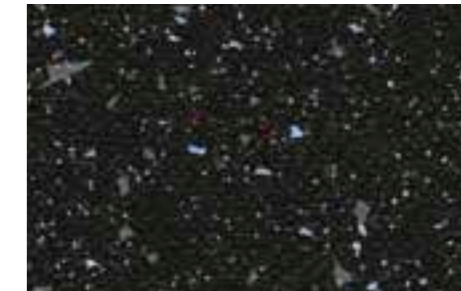
1017-664



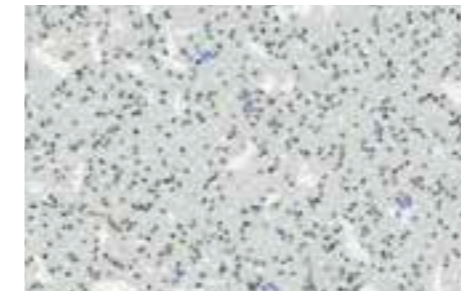
1341-662



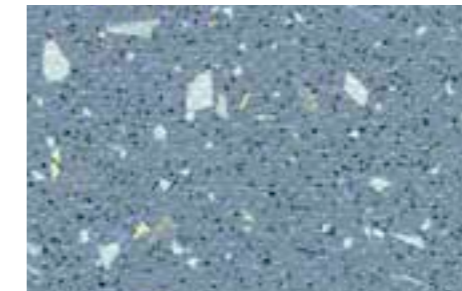
1396-660



1991-666



1204-663



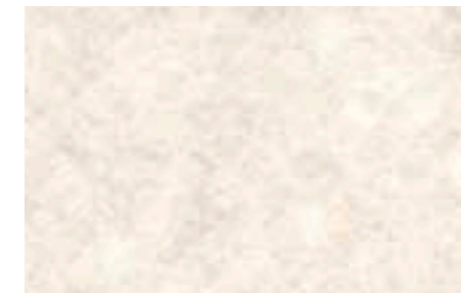
6123-661

# DIAMOND STANDART

# DIAMOND STANDART EVOLUTION



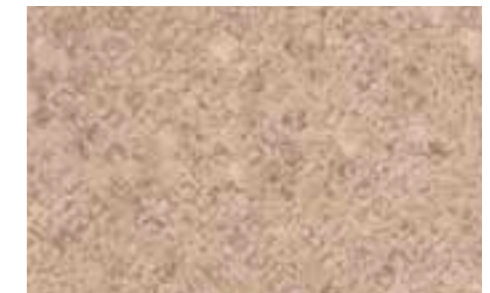
COST EFFECTIVE  
COMPACT  
FLOOR COVERING



4253-466



4253-468



4253-470



4253-464



4253-465



4253-453



4253-456

4253-457

## PERFORMANCE, FEATURES & BENEFITS

2/4 meter widths, cost effective, Broad color range, Great patterns, High residual indentation, Dimensionally stable, Anti-bacterial, Antistatic, 10 year warranty

## RECOMMENDED USAGE

Education | Healthcare | Retail | Hospitality  
Offices

## CONSTRUCTION



- Wear layer
- Design
- Compact layer
- Glass fibre reinforcement
- Back layer

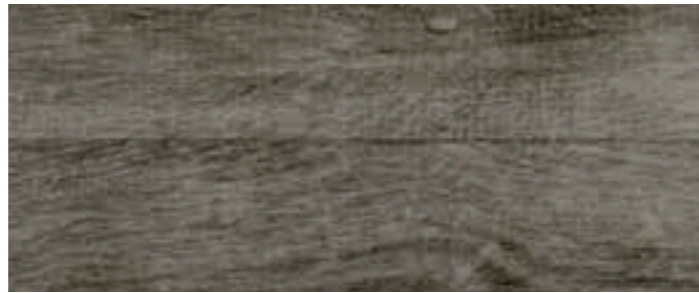
DESCRIPTION		
Construction		compact heterogeneous
Total thickness	EN ISO 24346	2,0 mm
Wear layer thickness	EN ISO 24340	0,7 mm
Width of roll	EN ISO 24341	2/4 m
Length of roll	EN ISO 24341	20 lm
Total weight	EN ISO 23997	2,2 kg/m²
CLASSIFICATION		
European classification	EN 685	class: 34/43
PERFORMANCE		
Abrasion group	EN 660-1	T
Residual indentation	EN ISO 24343	max. 0,1 mm
Dimensional stability	EN ISO 23999	max. 0,2 %
Fire resistance	EN 13501-1	class: Bfl-s1
	DIN 4102/ÖNORM	class: B1
	Gost 30402-94	class: G1
Slip resistance	DIN 51130	R9
	EN 13893	class: DS
Electrical resistance	EN 1815	< 2 kV
	EN 1081	≤ 10 <sup>9</sup> Ω
Chemical resistance	EN ISO 26987	✓
Bacterial resistance	EN ISO846:1999	✓
Light fastness	EN 20105 B02	grade 6
Castor chair resistance	EN ISO 4918	✓
Anti bacterial and fungicid treatment		graboSAN
Seaming method		hot or cold welding
Warranty		10 year

# DIAMOND STANDART EVOLUTION NATURAL

**PUR** **NOI**  
**SURFACE** **WAX**  
**SOLVENT** **grabo**  
**FREE** **SAN**  
minimize  
the growth of  
microorganisms



4235-487



4235-488



4181-468



4235-486



4159-472



4159-471



4235-489



DIAMOND  
STANDART

# DIAMOND STANDART TECH METAL



# DIAMOND STANDART TALENT



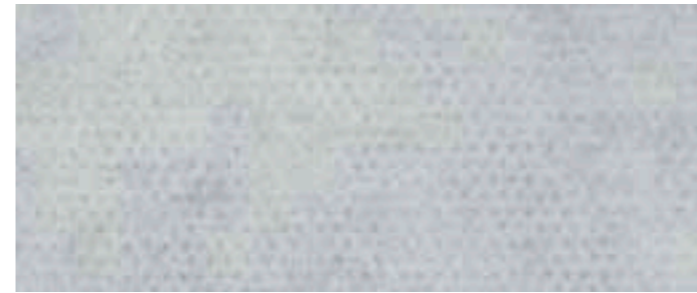
4564-481



4564-469



4564-470



4313-472-4



4313-470-4



4564-493



4564-476



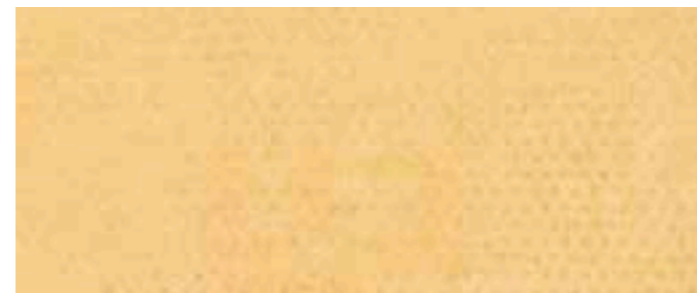
4564-494



4313-471-4



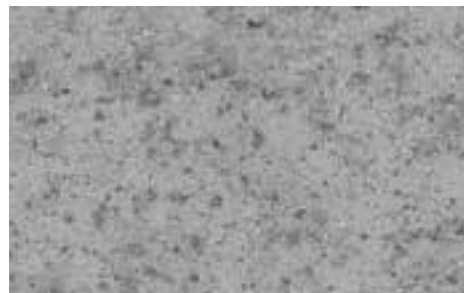
4313-467-4



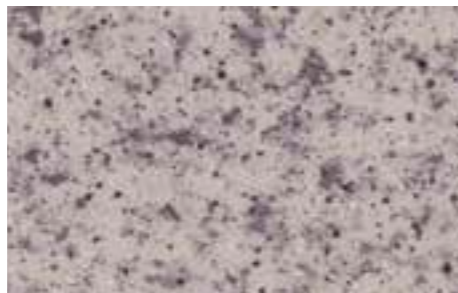
4313-464-4



4313-465-4



4564-496



4564-474



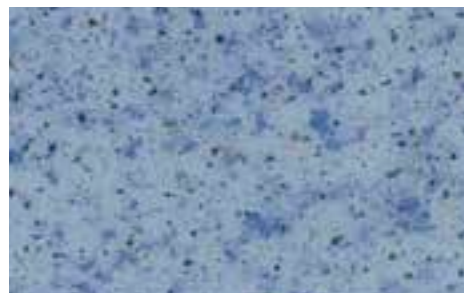
4564-473



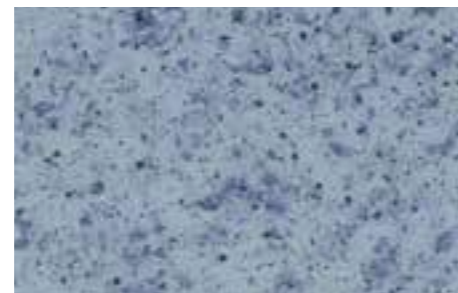
4313-460-4



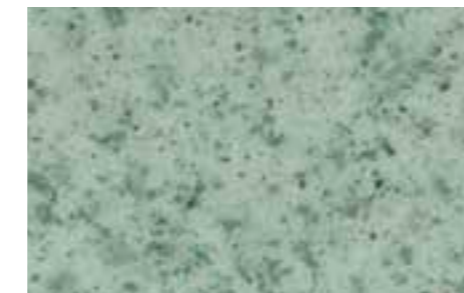
4313-474-4



4564-471



4564-472



4564-460



4313-473-4



4313-458-4

DIAMOND  
STANDART

# DIAMOND STANDART FORTE



# DIAMOND STANDART PLAZA



4213-469-4



4213-470-4



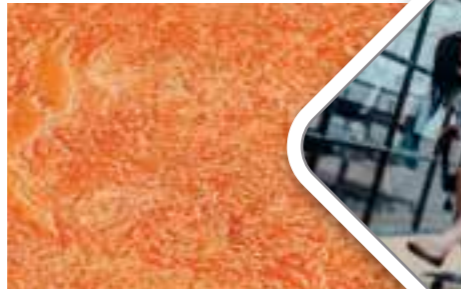
4213-464-4



4213-453-4



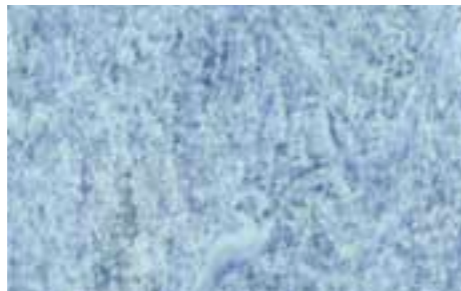
4213-456-4



4213-465-4



4213-455-4



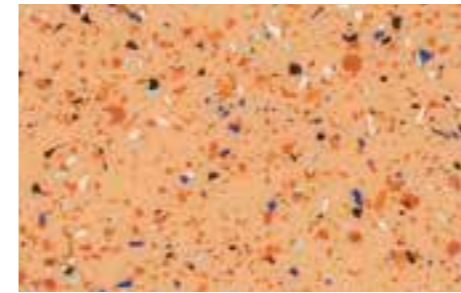
4213-479-4



4213-475-4



4213-463-4



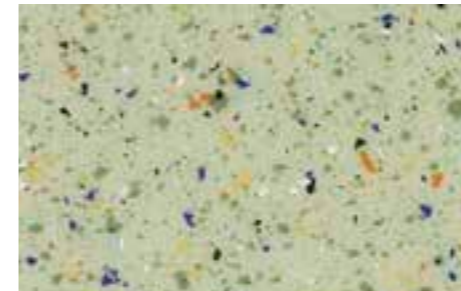
4115-453-06



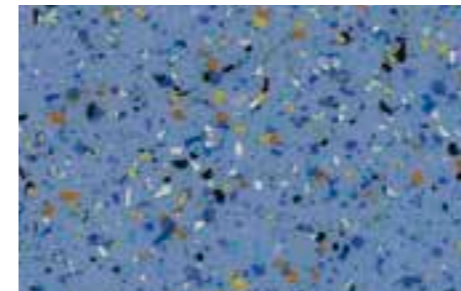
4115-456-06



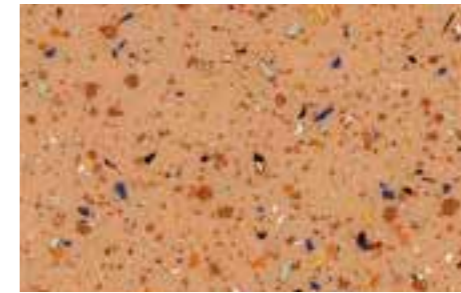
4115-458-06



4115-460-06



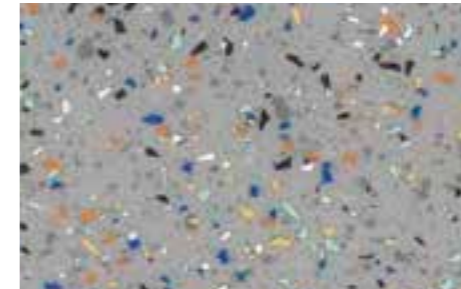
4115-459-06



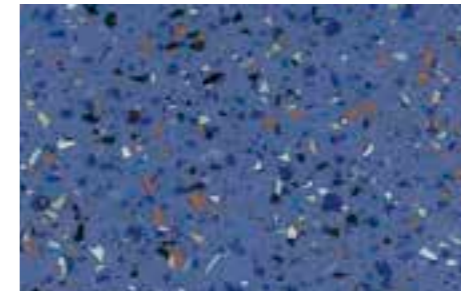
4115-467-06



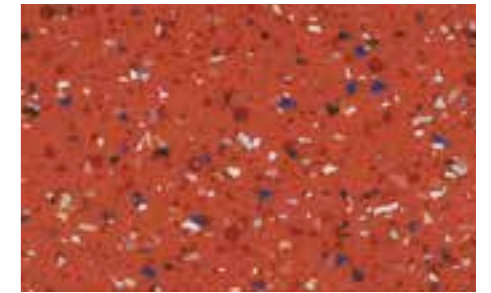
4115-451-06



4115-457-06



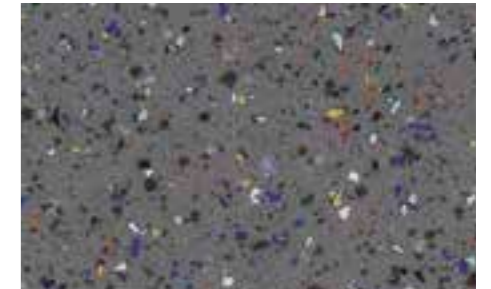
4115-469-06



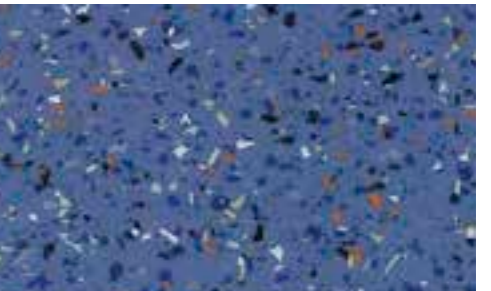
4115-454-06



4115-452-06



4115-468-06



4115-469-06

DIAMOND  
STANDART

AURA  
TOP  
ASTRAL  
SOUNDTEX 5.0

# HETEROGENEOUS

LIGHT COMMERCIAL FLOOR COVERINGS

# AURA

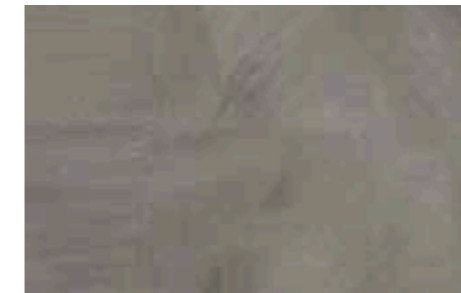
LIGHT COMMERCIAL  
VINYL  
FLOOR COVERING



4592-470



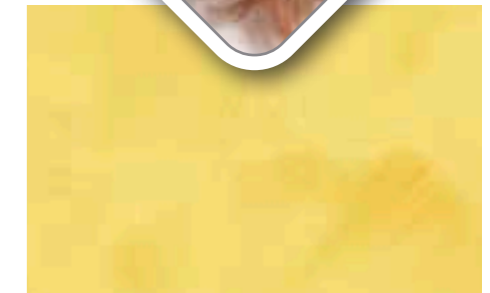
4592-471



4592-472



4592-460



4592-464



4592-465



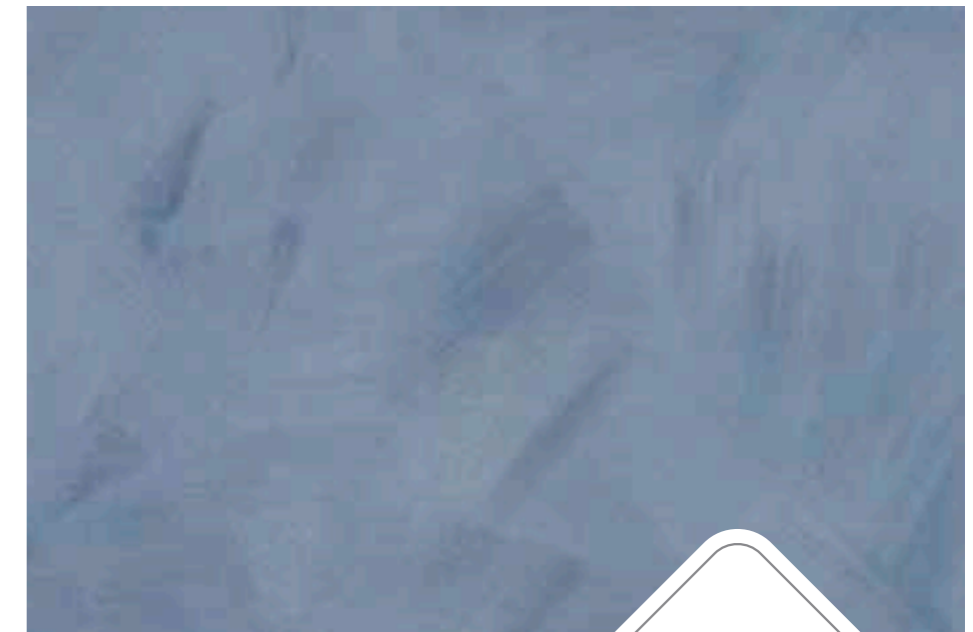
4592-452



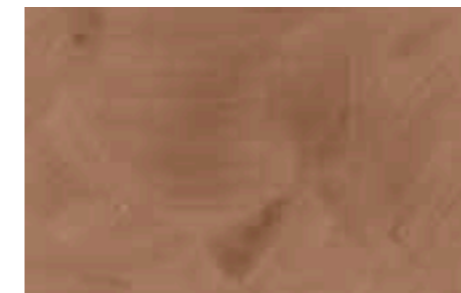
4592-451



4592-454



4592-458



4592-467

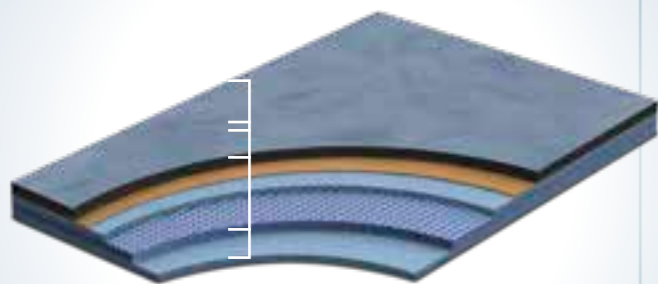
## PERFORMANCE, FEATURES & BENEFITS

2/4 meter widths, cost effective, Broad color range, Great patterns, High residual indentation, Dimensionally stable, Anti-bacterial, Antistatic, 10 year warranty

## RECOMMENDED USAGE

Kindergartens | Rooms | Halls | Kitchens

## CONSTRUCTION



- Wear layer
- Design
- Glass fibre reinforcement
- Foam layer

### DESCRIPTION

Construction		heterogeneous
Total thickness	EN ISO 24346	2,0 mm
Wear layer thickness	EN ISO 24340	0,4 mm
Width of roll	EN ISO 24341	2   4 m
Standard length of rolls	EN ISO 24341	25 lm
Normal length of rolls	EN ISO 24341	18-27 lm
Total weight	EN ISO 23997	1,8 kg/m <sup>2</sup>

### CLASSIFICATION

Classification	EN 685	class: 23/32/41
----------------	--------	-----------------

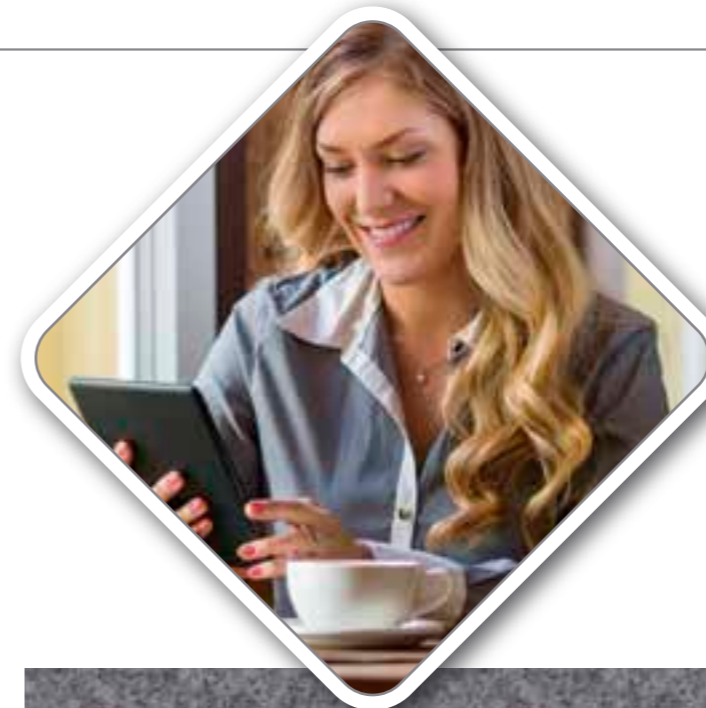
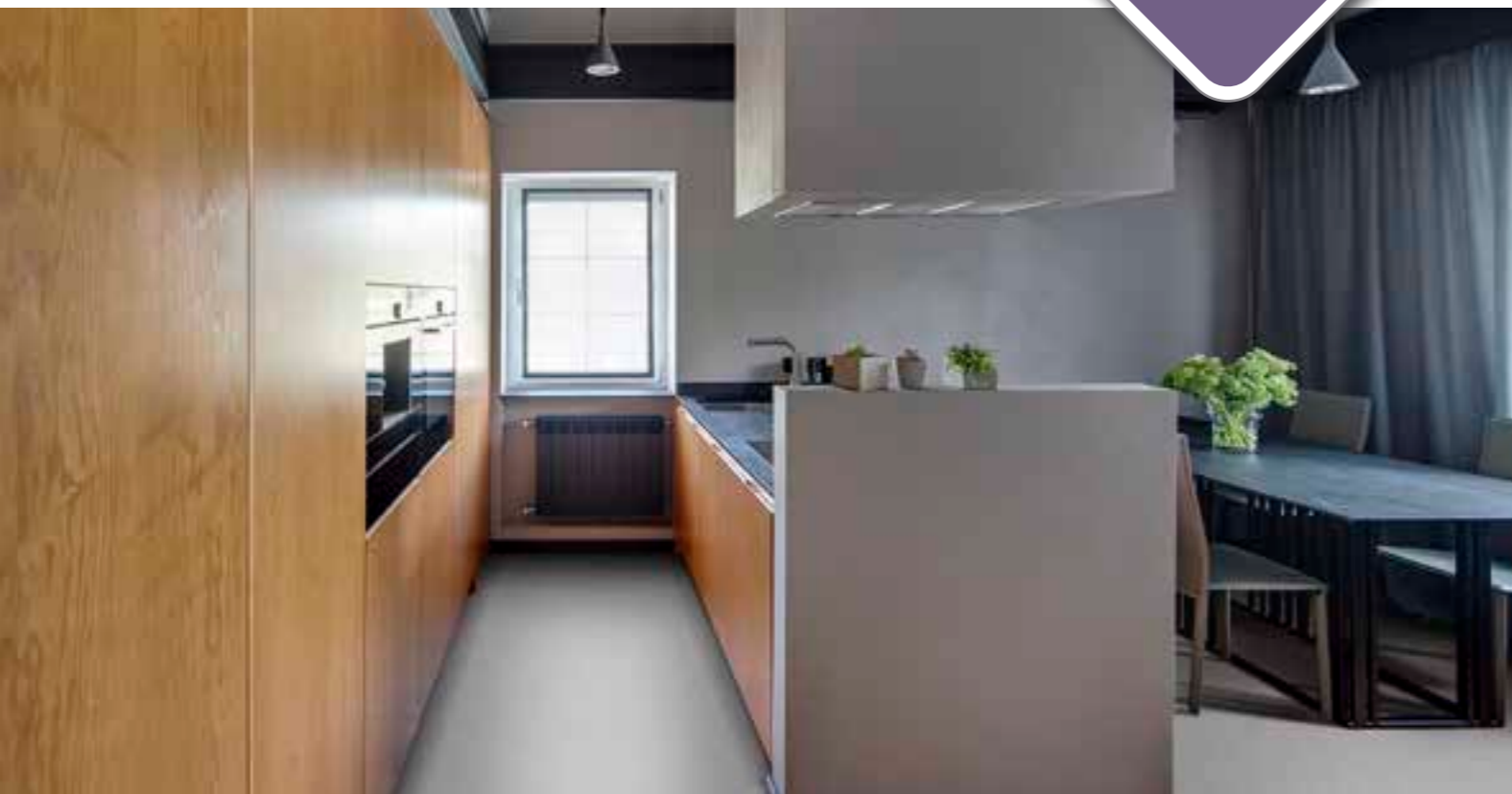
### PERFORMANCE

Abrasion group	EN 660-1	T
Residual indentation	EN ISO 24343	max. 0,2 mm
Dimensional stability	EN ISO 23999	max. 0,2 %
Fire resistance	EN 13501-1	class: Bfl-s1
Slip resistance	DIN 51130	R9
	EN 13893	class: DS
Electrical resistance	EN 1815	< 2 kV
Chemical resistance	EN ISO 26987	✓
Bacterial resistance	EN ISO846:1999	✓
Light fastness	EN 20105 B02	grade 6
Castor chair resistance	EN ISO 4918	✓
Anti bacterial and fungicid treatment		graboSAN
Seaming method		hot or cold welding
Warranty		7 year

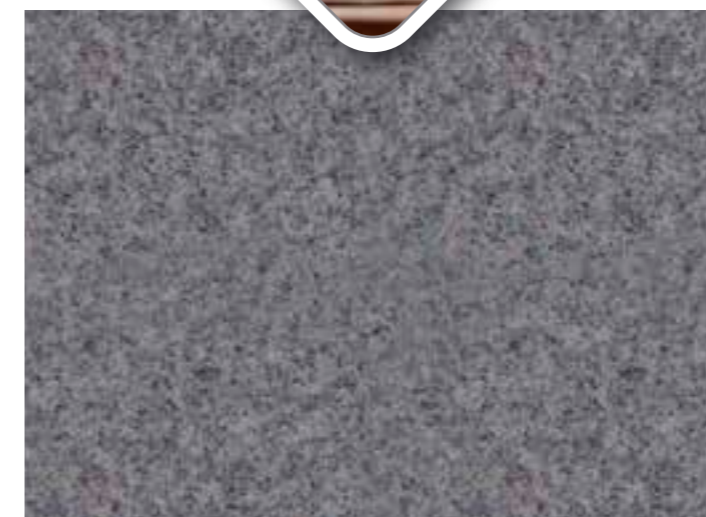
# TOP

LIGHT COMMERCIAL  
VINYL  
FLOOR COVERING

# TOP CLOUD



4546-259 ◀ 2 | 3 | 4 m



4546-257 ◀ 2 | 3 | 4 m



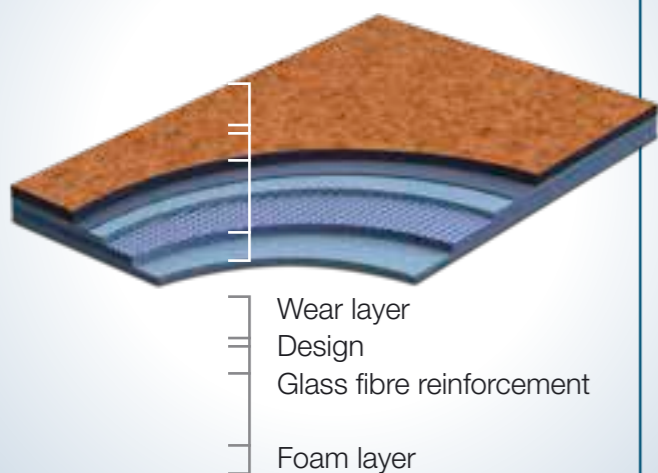
4261-252 ◀ 2 | 3 | 4 m

Grabo TOP Range vinyl floorcovering due to its high technical performance is suitable product for the heavy duty residential applications and for moderate traffic public areas as well. This floor provides excellent foot comfort.

## RECOMMENDED USAGE

Kindergartens | Rooms | Halls | Kitchens

## CONSTRUCTION



### DESCRIPTION

Construction		heterogeneous
Total thickness	EN ISO 24346	2,4 mm
Wear layer thickness	EN ISO 24340	0,5 mm
Width of roll	EN ISO 24341	2   3   4 m
Standard length of rolls	EN ISO 24341	25 lm
Normal length of rolls	EN ISO 24341	18-27 lm
Total weight	EN ISO 23997	2,0 kg/m <sup>2</sup>

### CLASSIFICATION

Classification	EN 685	class: 23/33/42
----------------	--------	-----------------

### PERFORMANCE

Residual indentation	EN ISO 24343	max. 0,2 mm
Dimensional stability	EN ISO 23999	max. 0,2 %
Fire resistance	EN 13501-1	class: Cfl-s1
Slip resistance	EN 13893	class: R9
Light fastness	EN 20105 B02	grade 6
Abrasion group	MSZ EN 660-1	T
Castor chair resistance	EN ISO 4918	✓
Warranty		7 year

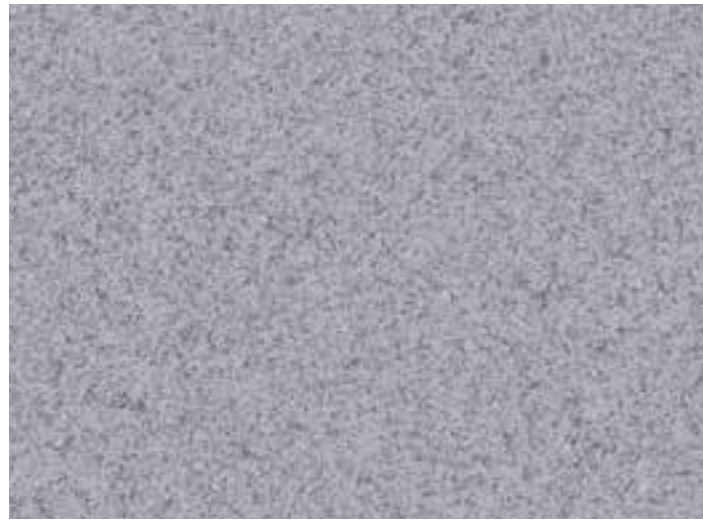


4261-257 ◀ 2 | 3 | 4 m



4546-263 ◀ 2 | 3 | 4 m

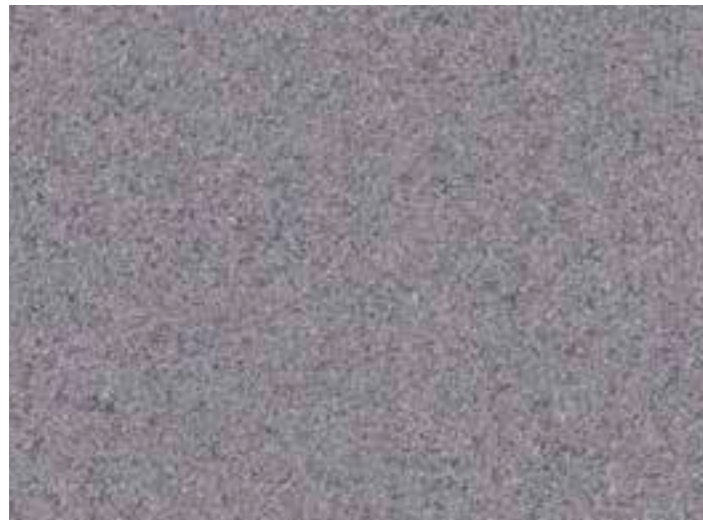
# TOP METAL



4564-297 ◀ 2 | 3 | 4 m



4564-251 ◀ 2 | 3 | 4 m



4564-299 ◀ 2 | 3 | 4 m



4564-296 ◀ 2 | 3 | 4 m



4564-301 ◀ 2 | 3 | 4 m



4564-292 ◀ 2 | 3 | 4 m

# TOP NATURAL



4266-251 ◀ 2 | 3 | 4 m



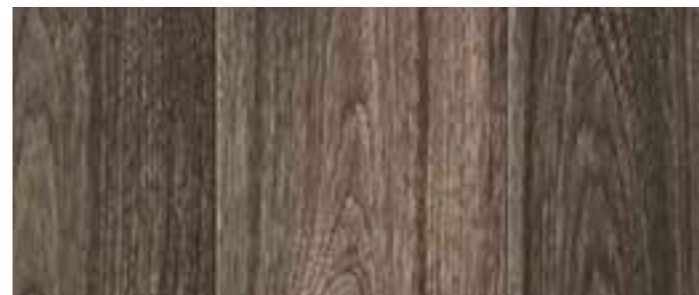
4266-260 ◀ 2 | 3 | 4 m



4265-253 ◀ 2 | 3 | 4 m



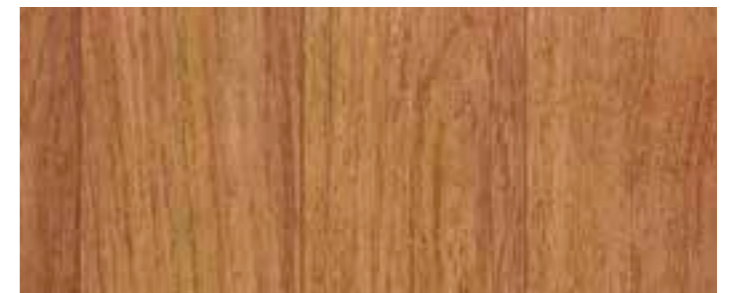
4266-272 ◀ 2 | 3 | 4 m



4266-271 ◀ 2 | 3 | 4 m



4259-254 ◀ 2 | 3 | 4 m



4259-253 ◀ 2 | 3 | 4 m



4262-261 ◀ 2 | 3 | 4 m



4121-260 ◀ 2 | 3 | 4 m

# ASTRAL

LIGHT COMMERCIAL  
VINYL  
FLOOR COVERING

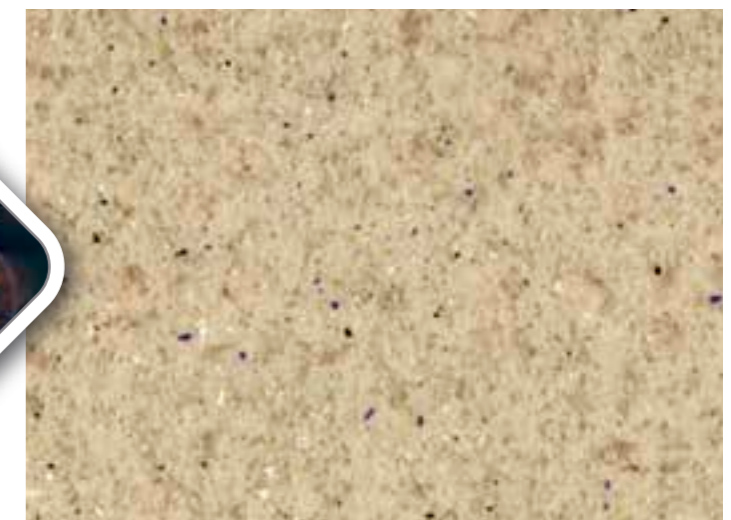
## ASTRAL CHIPS



4581-464-08-4 ◀ 2 | 4 m



4564-454-05-4 ◀ 2 | 3 | 4 m



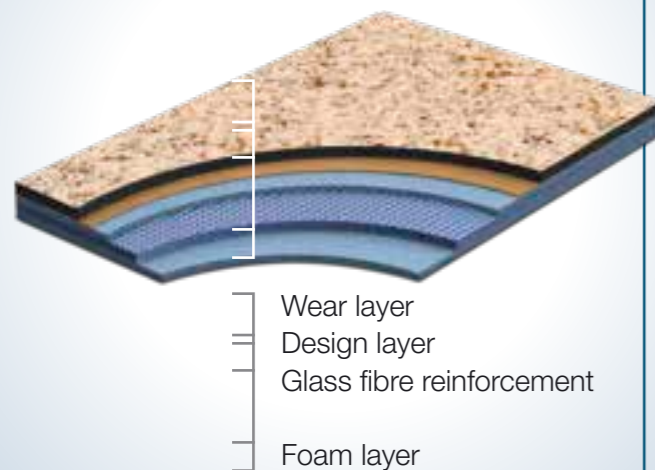
4564-452-05-4 ◀ 2 | 3 | 4 m

Grabo ASTRAL Family has excellent technical characters witch are associated with a design surplus. We offer this product to modern homes, offices, shops and educational buildings.

### RECOMMENDED USAGE

Kitchens | Halls | Rooms | Classrooms | Offices

### CONSTRUCTION



### DESCRIPTION

Construction		heterogeneous
Total thickness	EN ISO 24346	2,0 mm
Wear layer thickness	EN ISO 24340	0,4 mm
Width of roll	EN ISO 24341	2   3   4 m
Standard length of rolls	EN ISO 24341	25 lm
Normal length of rolls	EN ISO 24341	18-27 lm
Total weight	EN ISO 23997	1,8 kg/m <sup>2</sup>

### CLASSIFICATION

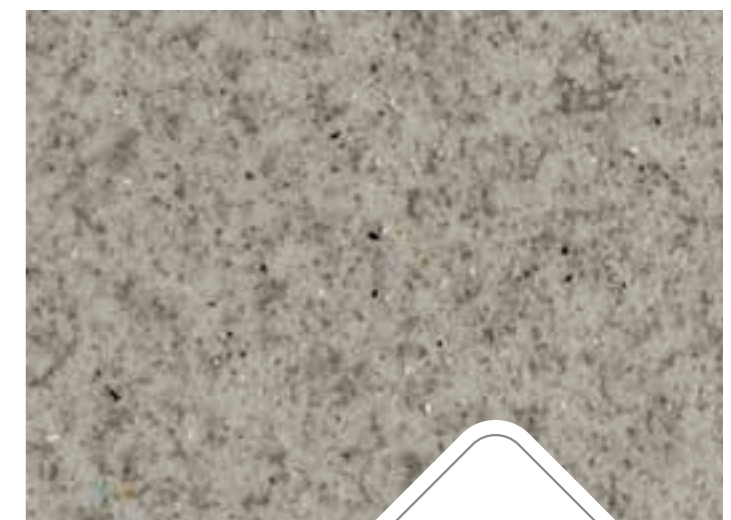
Classification	EN 685	class: 23/32/41
----------------	--------	-----------------

### PERFORMANCE

Residual indentation	EN ISO 24343	max. 0,2 mm
Dimensional stability	EN ISO 23999	max. 0,2 %
Fire resistance	EN 13501-1	class: Cfl-s1
Slip resistance	EN 13893	class: DS
Light fastness	EN 20105 B02	grade 6
Abrasion group	MSZ EN 660-1	T
Castor chair resistance	EN ISO 4918	✓
Warranty		7 year



4581-465-08-4 ◀ 2 | 4 m



4564-467-05-4 ◀ 2 | 3 | 4 m

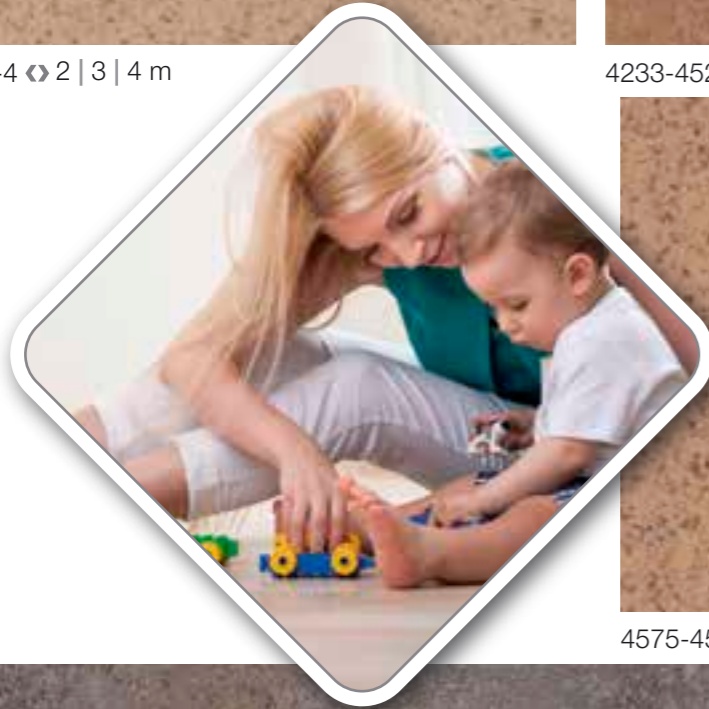
# ASTRAL COLOR



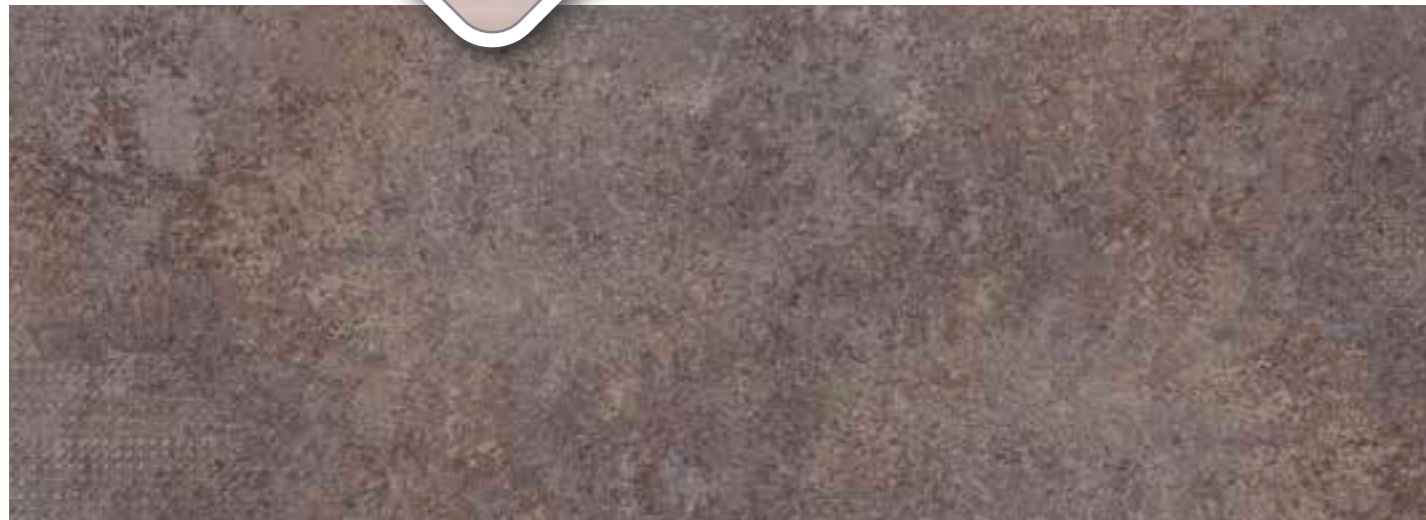
4575-452-4 ◀ 2 | 3 | 4 m



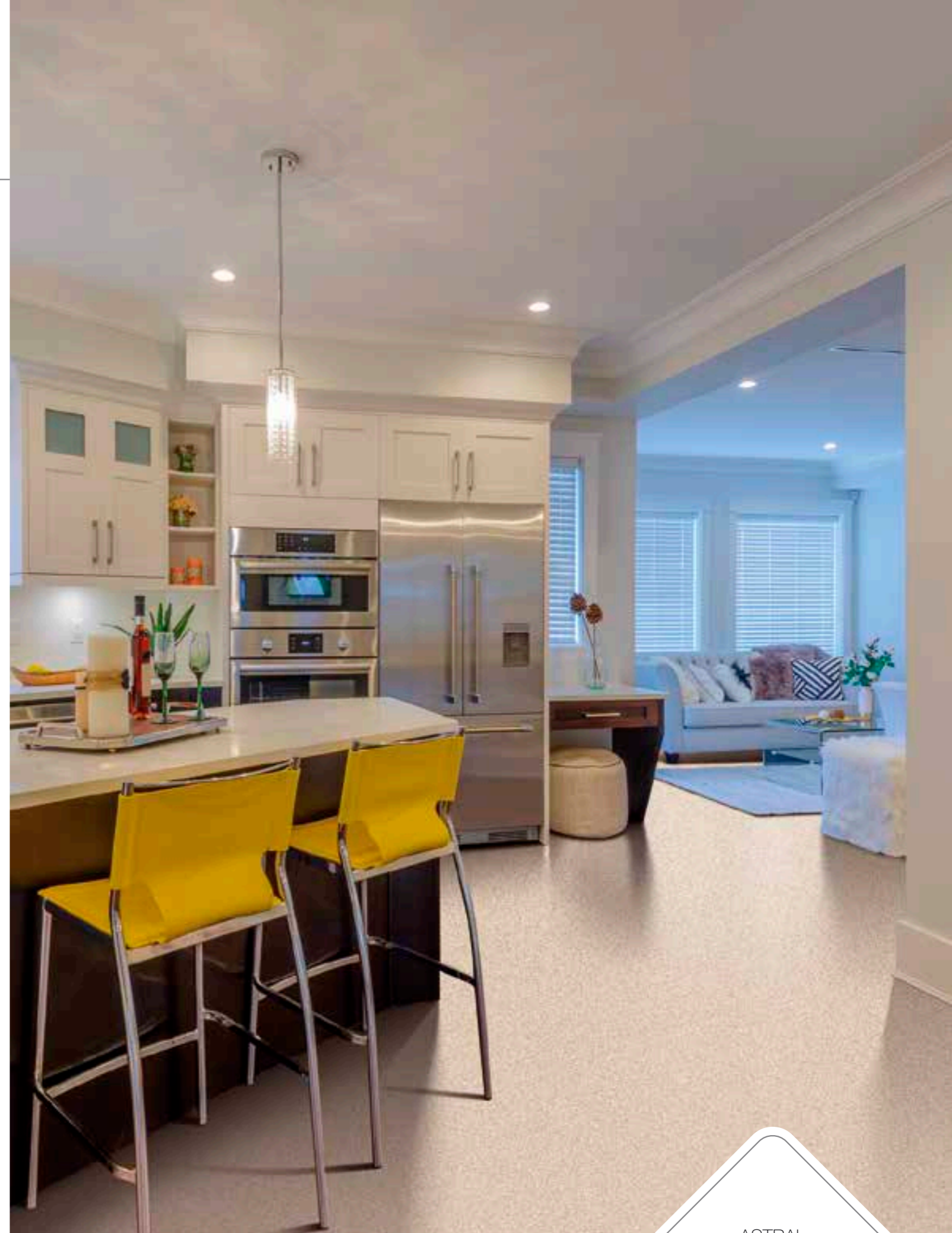
4233-452-3 ◀ 2 | 3 | 4 m



4575-453-4 ◀ 2 | 3 | 4 m



4233-456-3 ◀ 2 | 3 | 4 m



# ASTRAL NATURAL



4235-462-5 ◀ 2 | 3 | 4 m



4235-465-5 ◀ 2 | 3 | 4 m



4235-463-5 ◀ 2 | 3 | 4 m



4263-452-5 ◀ 2 | 3 | 4 m



4262-453-5 ◀ 2 | 3 | 4 m



4231-462-5 ◀ 2 | 3 | 4 m



4266-454-5 ◀ 2 | 3 | 4 m



# SOUNDTEX 5.0

LIGHT COMMERCIAL  
VINYL  
FLOOR COVERING

# SOUNDTEX 5.0 MARBLE



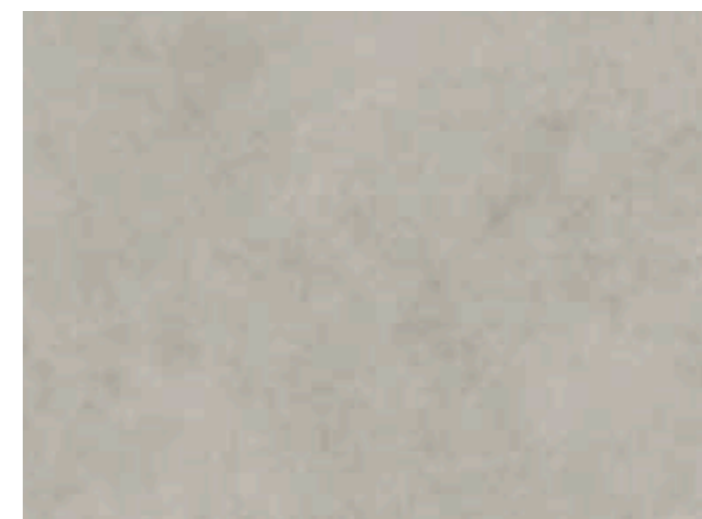
4547-505-4 ◀ 2 | 4 m



4261-472-3 ◀ 3 m



4547-511-4 ◀ 2 | 4 m



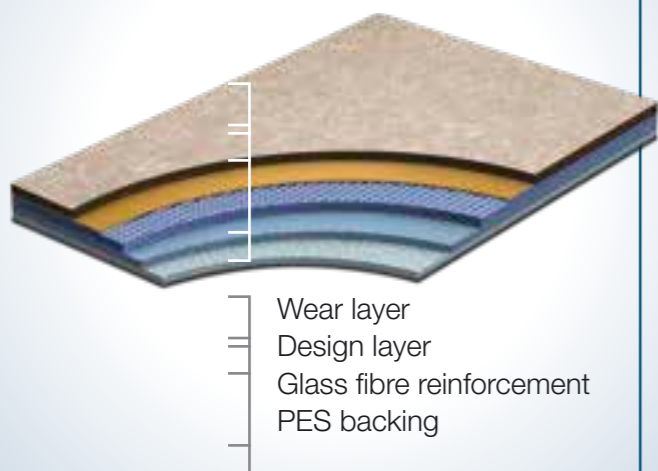
4547-510-4 ◀ 2 | 4 m

Grabo SOUNDTEX 5.0 floorings combine good technical characteristics with extra design features. The product ensures excellent residual indentation, good comfort feeling, and thanks to the non-woven backing it can be installed without glue, which allows easier and quicker installation, especially in renovation projects.

## RECOMMENDED USAGE

Nursery homes | Preschools | Libraries  
Dormitory rooms

## CONSTRUCTION



### DESCRIPTION

Construction		heterogeneous
Total thickness	EN ISO 24346	3,2 mm
Wear layer thickness	EN ISO 24340	0,5 mm
Width of roll	EN ISO 24341	2   3   4 m
Standard length of rolls	EN ISO 24341	25 lm
Normal length of rolls	EN ISO 24341	18-27 lm
Total weight	EN ISO 23997	2,2 kg/m <sup>2</sup>

### CLASSIFICATION

Classification	EN 685	class: 23/33/42
----------------	--------	-----------------

### PERFORMANCE

Residual indentation	EN ISO 24343	max. 0,2 mm
Dimensional stability	EN ISO 23999	max. 0,2 %
Fire resistance	EN 13501-1	class: Cfl-s1
Slip resistance	EN 13893	class: R9
Light fastness	EN 20105 B02	grade 6
Abrasion group	MSZ EN 660-1	T
Castor chair resistance	EN ISO 4918	✓
Warranty		7 year



4547-509 ◀ 2 | 4 m



4261-451-3 ◀ 2 | 4 m

# SOUNDTEX 5.0 NATURAL



4235-452-5 ◀ 2 | 4 m



4259-501-5 ◀ 2 | 4 m



4235-456-5 ◀ 2 | 4 m



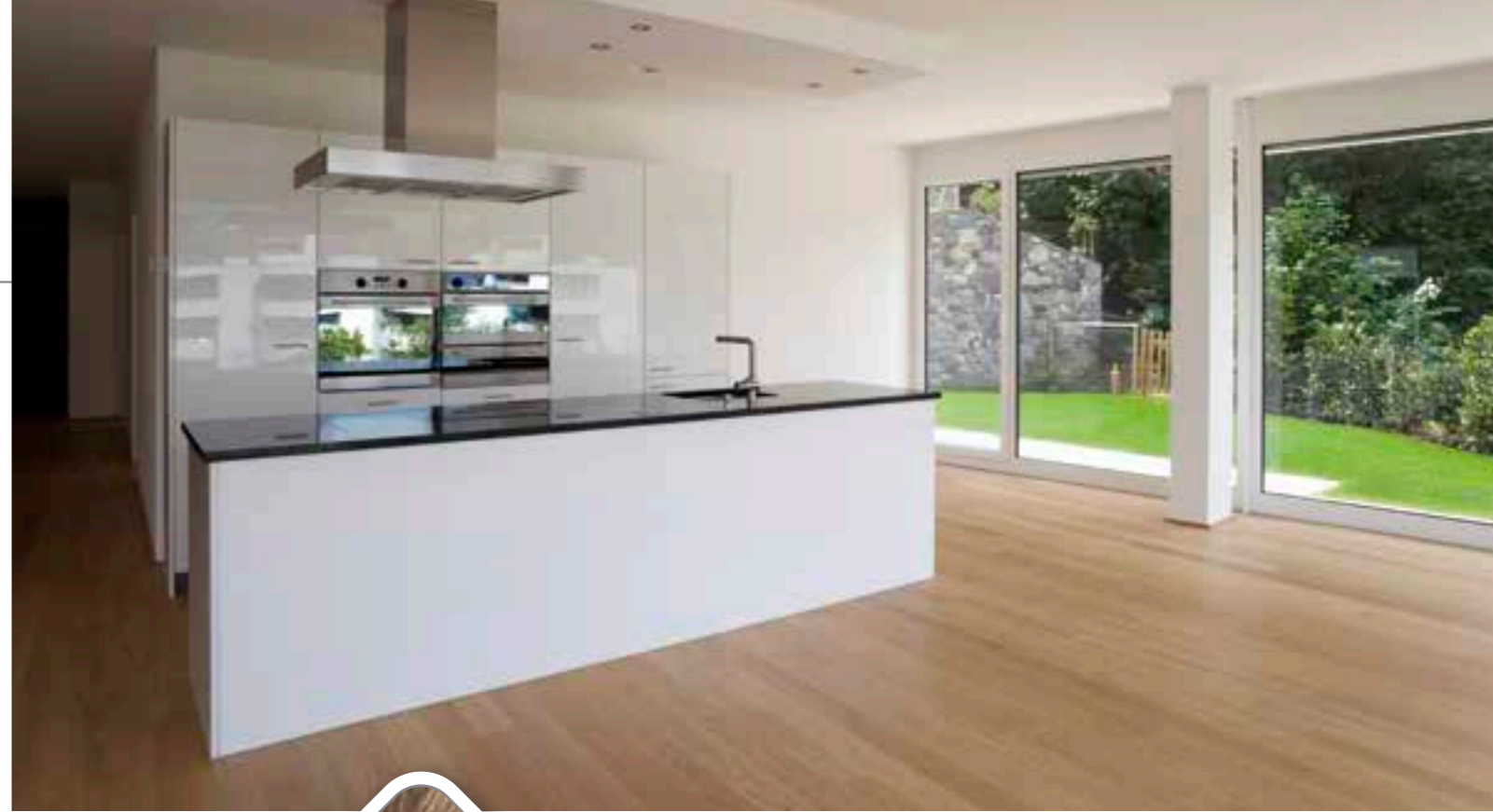
4266-453-4 ◀ 2 | 3 | 4 m



4235-469-5 ◀ 2 | 4 m



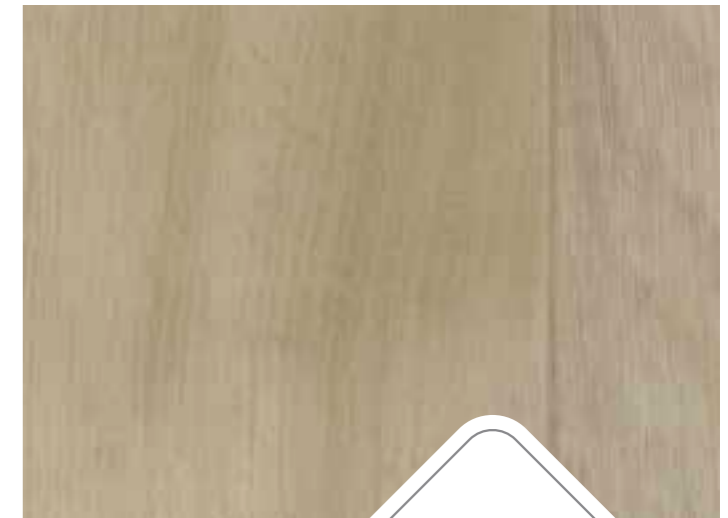
4262-467-4 ◀ 2 | 3 | 4 m



4259-504-5 ◀ 2 | 4 m



4263-482-4 ◀ 2 | 3 | 4 m



4259-503-5 ◀ 2 | 4 m

# LUXURY VINYL TILE FLOORING

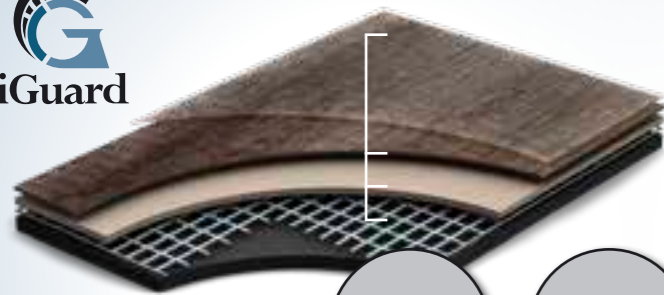
# LUXURY VINYL TILE

PLANKIT | DOMINO | ROBUST | IDEAL

LUXURY  
VINYL TILE FLOORING  
FOR COMMERCIAL  
AND DOMESTIC  
USE

The Grabo LVT floorings are inspired by nature, manufactured with phthalate free technology and provides an environmentally friendly flooring solution for the users.

DESCRIPTION	PlankIT		Domino		Robust and Ideal are available in all Plankit designs with the minimum quantity of 2 pallets/design.	
					Robust	Ideal
Construction	Luxury Vinyl Tile with iGuard Surface					
Plank size   wood	EN ISO 24346	185x1220 mm	185x1220 mm	185x1220 mm	185x1220 mm	185x1220 mm
	EN ISO 24346	158x950 mm*	158x950 mm*	158x950 mm	158x950 mm	158x950 mm
Plank size   stone	EN ISO 24346	305x610 mm	305x610 mm	305x610 mm	305x610 mm	305x610 mm
Total thickness	EN ISO 24346	2,5 mm	2,3 mm	3,0 mm	3,0 mm	2,7 mm
Wear layer thickness	EN ISO 24340	0,55 mm	0,3 mm	1,0 mm	1,0 mm	0,7 mm
Total weight	EN ISO 23997	3,8 kg/m <sup>2</sup>	3,4 kg/m <sup>2</sup>	4,6 kg/m <sup>2</sup>	4,6 kg/m <sup>2</sup>	3,9 kg/m <sup>2</sup>
<i>*min. order quantity 2 pallets</i>						
<b>CLASSIFICATION</b>						
European classification	EN 685	class: 33/42	class: 23/31	class: 34/43	class: 34/43	class: 34/43
Binder content	EN ISO 10582	Type I.	Type I.	Type I.	Type I.	Type I.
<b>PERFORMANCE</b>						
Abrasion group	EN 660-1	T	T	T	T	T
Residual indentation	EN ISO 24343	max. 0,1 mm	max. 0,1 mm	max. 0,1 mm	max. 0,1 mm	max. 0,1 mm
Dimensional stability	EN ISO 23999	max. 0,15 %	max. 0,15 %	max. 0,15 %	max. 0,15 %	max. 0,15 %
Curling	EN ISO 23999	max. 2,0 mm	max. 2,0 mm	max. 2,0 mm	max. 2,0 mm	max. 2,0 mm
Fire resistance	EN 13501-1	class: Bfl-s1	class: Bfl-s1	class: Bfl-s1	class: Bfl-s1	class: Bfl-s1
Slip resistance	EN 13893	class: DS	class: DS	class: DS	class: DS	class: DS
Electrical properties	EN 1815	max. 2 kV / Antistatic	max. 2 kV / Antistatic	max. 2 kV / Antistatic	max. 2 kV / Antistatic	max. 2 kV / Antistatic
Chemical resistance	EN ISO 26987	✓	✓	✓	✓	✓
	ASTM F925	✓	✓	✓	✓	✓
Light fastness	EN 20105 B02	grade 6	grade 6	grade 6	grade 6	grade 6
Castor chair resistance	EN ISO 4918	✓	✓	✓	✓	✓
Surface treatment	iGuard PUR Surface / Easy cleaning					
Content of pcp	EN 12673	does not contain	does not contain	does not contain	does not contain	does not contain
Formaldehyde emission	ENV 717-1	E1 (no emission)	E1 (no emission)	E1 (no emission)	E1 (no emission)	E1 (no emission)
VOC		pass	pass	pass	pass	pass
Warranty	Commercial	10 year	5 year	15 year	12 year	12 year
	Residential	15 year	10 year	20 year	17 year	17 year



NORMAL  
FORMAT



4 SIDE  
BEVELED

PLANK-IT

2,5  
0,55  
mm

DOMINO

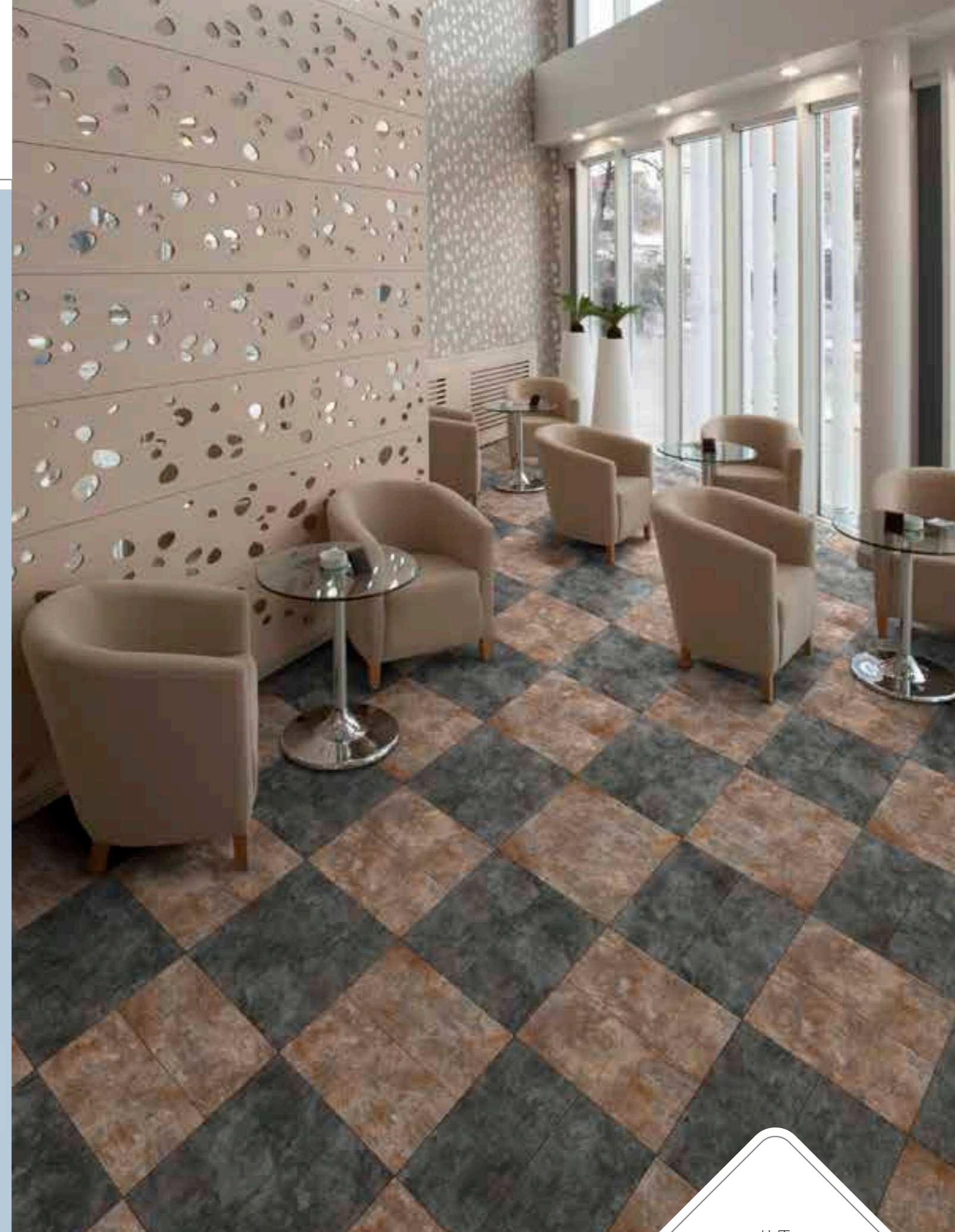
2,3  
0,3  
mm

ROBUST

3,0  
1,0  
mm

IDEAL

2,7  
0,7  
mm



# PLANK-IT WOOD



TARGARYEN

OLENA

NEW

WESTERLING

BRONN



NEW

TYRION

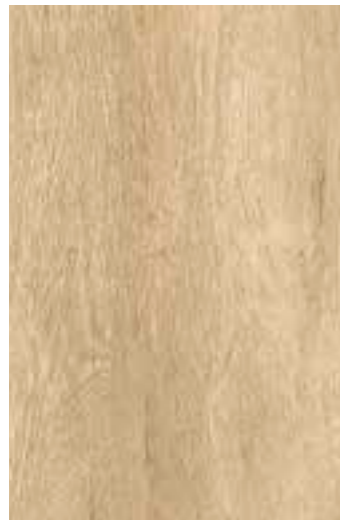
ARYA

NEW

MARTELL

NEW

STARK



LANNISTER

ARRYN

TULLY

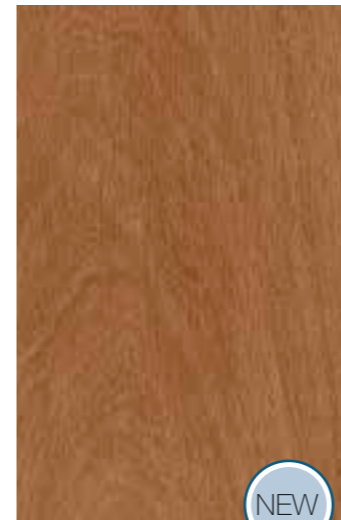
TORMUND



REED

GENDRY

MALISTER



NEW

DOREAH

NEW

SANSA

BARATHEON

# PLANK-IT WOOD



WALDER



MARGAERY

NEW



BOLTON



ROSLIN

NEW



MORMONT



DROGO



GREYJOY



DAVOS



OBERYN

NEW



FREY-A

NEW



FREY-B

NEW



# PLANK-IT STONE



YGRITTE



BRIENNE



MYRCELLA

NEW



PODRICK

NEW



ROYCE

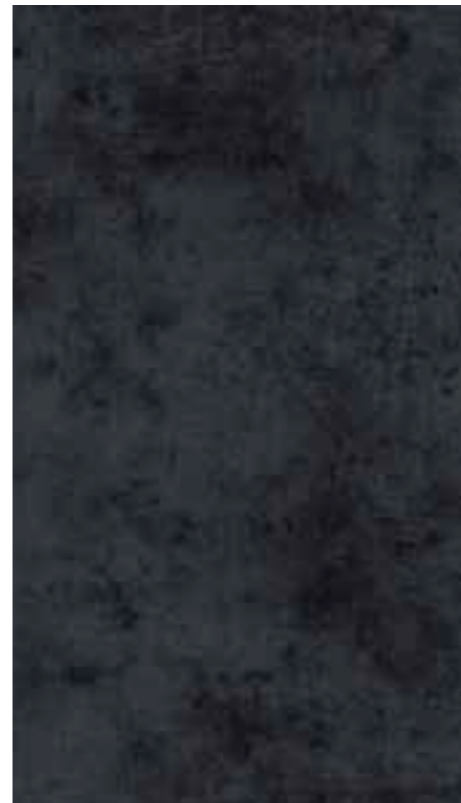


LUWIN



HODOR

NEW



CASSEL



PLANK-IT

# PLANK-IT JAZZ



1137 Wh

NEW



3223 Or

NEW



1240 Gr

NEW



6152 Bl

NEW



1991 Bk

NEW



# DOMINO WOOD



TULLY



MALISTER



MORMONT



BARATHEON



LANNISTER



REED



GENDRY



TORMUND



WALDER



BOLTON



GREYJOY



DOMINO

# DOMINO STONE



BRIENNE



CASSEL



ROYCE



LUWIN



DOMINO

# WALL COVERING

# MURAVYL

HIGH PERFORMANCE  
FLEXIBLE  
WALL COVERING



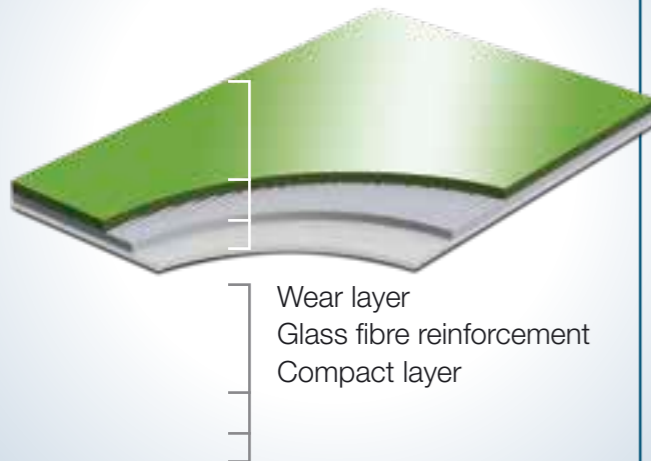
## PERFORMANCE, FEATURES & BENEFITS

2 m width, Excellent fire resistance,  
Dimensionally stable, Anti-bacterial, Antistatic

## RECOMMENDED USAGE

Education | Healthcare | Retail | Hospitality  
Offices

## CONSTRUCTION



### DESCRIPTION

Construction		compact heterogeneous
Total thickness	EN ISO 24346	1,5 mm
Wear layer thickness	EN ISO 24340	0,5 mm
Width of roll	EN ISO 24341	2 m
Length of roll	EN ISO 24341	25 lm
Total weight	EN ISO 23997	1,4 kg/m <sup>2</sup>

### CLASSIFICATION

Product specification	EN 649	✓
Residual indentation	EN 433	max. 0.1 mm
Dimensional stability	EN ISO 23999	max. 0,2 %
Light fastness	EN ISO 105-B02	grade 6

### PERFORMANCE

Abrasion group	MSZ EN 660-1	T
Fire resistance	EN 13501-1	class: B-s2, d0
Chemical resistance	EN ISO 26987	✓
Anti bacterial and fungicid treatment		graboSAN
Seaming method	EN ISO846:1999	heat or cold weld



# STORAGE AND CARE GUIDE

The Grabo commercial vinyl floorings should be stored in the upright position or on racks in their original packaging in dry, clean and well ventilated premises. Outdoor storage under cover is not allowed. Ensure the storing temperature between +10°C and +35°C. Avoid storage in premises with high moisture content and/or condensation. The relative moisture content in the storing premises should be within 40–75%.

The GraboWeld welding rod used for heat welding should be stored under the same conditions as the flooring sheets, in its original packaging that should not be opened before use.

If stored in heated premises, the PVC products should be protected from heat. The distance between the heat source and the stored products should be at least 1 meter.

The products should be protected from direct sunlight and artificial light with high UV levels.

The product should not be exposed to strain, pressure or other load during storing in order to prevent permanent deformation and cracking.

Appropriate storing conditions and adequate handling of the commercial PVC floorings will help to retain their properties till the end of their life-time. In case of extended storing (for more than one year) an adhesion test is recommended prior to the installation of the product. Only the rolls from a similar batch and having the same lot number should be used for the same premises. Prior to installation of the flooring visually inspect the sub-floor for general appearance, color and surface condition. The manufacturer does not assume responsibility for any additional labor or cost expenses resulting from evident surface defects.

## INSTALLATION

### SUB-FLOOR REQUIREMENTS

The contractor performing the installation of the Grabo commercial vinyl floorings must ensure the proper quality of the sub-floor. The sub-floor must be clean, smooth, permanently dry, free of cracks and any contaminants that might affect adhesion (e.g. paint, oil, grease, plaster or adhesive), sufficiently hard and resistant to pressure and tension strain. In case of concrete and sand/cement screed sub-floors, their moisture content should not exceed 2.5%. If the sub-floor moisture content exceeds 2.5%, but does not reach 5%, the damp proof membrane Grabo Vaporex should be installed underneath the PVC flooring system. If the sub-floor moisture content exceeds 5%, do not start installation before it goes below 5% or install a damp proof membrane underneath the commercial PVC flooring system.

It is recommended to check the condition of the sub-floor by performing the required tests and measurements prior to installation of the flooring. Check

the surface level (using a ruler or a measuring wedge), as well as the absence of cracks, the moisture content (using a hydrometer) and the surface hardness (scratch test). Document the obtained test results. The sub-floor temperature directly before installation of the flooring should be between +15°C and +30°C.

Preparation of the Sub-floor (New or Existing Bases)

Prepare the new concrete base by stone or power grinding and vacuum cleaning. In case of new gypsum based screed sub-floors remove the loose upper gypsum layer by grinding. In case of existing carpet and rubber flooring, upon removing the old carpet or rubber sheets clean the surface from traces of paint and adhesive, then patch or fill the cracks and hollows, if any, before installing the new floor covering. If the new flooring is to be installed on top of a PVC base or ceramic tiles, thoroughly clean the surface by abrasion and vacuuming, fill the joints with a suitable repair composition and apply an approved primer compound to the entire surface.

If the new flooring is to be installed over existing wooden or laminated floors, confirm that the boards are securely fixed and properly dried. Firmly nail any loose elements to the joists and replace any boards with moisture content higher than required. The surface then should be sanded and cleaned from dust and treated with an appropriate primer compound. These sub-floor preparation and floor laying instructions assume the use of Henkel Thomsit products which can as well be replaced by products of any other brand with similar technical properties. For the pre-treatment of the concrete base use dispersion primer Thomsit R 777 diluted with water by half; apply the primer without dilution on gypsum screed base with the help of a sponge roller and leave to dry for 24–48 hours. Use primer Thomsit R 766 diluted with water by half to pre-treat hard, dense, impervious surfaces. The primer will trap the remaining dust, close the pores in the concrete and make a contact surface for the smoothing compound. After the primer has been completely absorbed, the surface needs to be leveled using a suitable smoothing compound (e.g. self-leveling compound Thomsit). When choosing the self-leveling compound, consider the expected traffic load and the time allotted for the installation of the flooring. Thoroughly mix the powder with water according to manufacturer's instructions and then spread the smooth paste on the surface with a flat trowel. Occasional air bubbles should be removed with the help of a spiked roller. After the surface has completely dried up, it should be smooth-finished and cleaned from dust.

The Grabo commercial vinyl floorings are compatible with underfloor heating. If underfloor heating is used on the site, the heating system must be switched on at least four weeks before installation of the new flooring. Switch off the underfloor heating 24 hours before commencement of work and keep

it turned off till installation of the PVC flooring has been completed. Wait 48 hours after the flooring has been installed and then switch on the heating again. Raise the temperature steadily till it reaches its usual value over approximately 5 days. While using underfloor heating, the temperature of the sub-floor must not exceed 28°C.

In case of installing Grabo Luxury Vinyl Tiles, the suitable subfloor-types of well prepared, levelled plain subfloors:

- concrete / cement
- anhydrite
- plywood
- stone, terrazzo, ceramic
- solid PVC

Do not install over

- carpet
- cushioned, very soft vinyl
- wooden parquet
- laminate or other floating floor
- asphalt and bitumen

### INSTALLATION OF GRABO COMMERCIAL VINYL FLOORINGS

While the measured sub-floor moisture content stays within 2.5–5CM%, the use of damp proof membrane Grabo Vaporex is mandatory. If the measured subfloor moisture content is below 2.5%, the use of damp proof membrane Grabo Vaporex with Grabo commercial vinyl floorings can be waived. The use of Grabo Vaporex underlay is advisable in the case of existing concrete bases, vinyl floorings and metal bases and mandatory for asphalt sub-floors. Installation of Grabo Commercial Vinyl Floorings with Grabo Vaporex:

The underlay must be unrolled and tempered on the site at a temperature of at least 18°C for one day prior to installation. The Grabo Vaporex underlay should be placed on the even, dry and clean sub-floor prepared according to instructions, with the pattern side facing down. Fold up the edges near the walls for at least 10 centimeters and trim accordingly. Adjust the underlay sheets edge-to-edge and then fasten the edges on the top (of the plain side) with a 5 cm wide vinyl adhesive tape. The underlay should lie flat on the surface. While Grabo Vaporex can be laid both lengthwise and crosswise, the crosswise installation is advised. Make sure the underlay joints do not fall together with the seams between the flooring sheets installed on top of the underlay. The Grabo commercial vinyl floorings should be glued to the underlay using a dispersion contact adhesive (e.g. Thomsit K 188E). Spread the adhesive evenly on the underlay surface using an A4 notched trowel, maintaining the spread rate of approximately 200 g/m<sup>2</sup>. Leave the adhesive to evaporate completely till it changes from opaque to transparent yellow. After approximately 60–90 minutes test it with your finger, and

if not anymore tacky, the adhesive bed is ready to accept the flooring sheets. Further steps (e.g. welding) are the same as described below for the installation of Grabo commercial vinyl floorings without Grabo Vaporex underlay.

Installation of Grabo Commercial Vinyl Floorings without Grabo Vaporex: The flooring must be unrolled and tempered on the site at a temperature of at least 18°C for one day prior to installation. Use the flooring rolls from a similar batch and having the same lot number for installation in the same premises. It is advisable to open the rolls in the ascending order of their lot numbers. When laying the flooring with a wood imitating pattern the subsequent strips should point in the same direction, otherwise lay every next strip with the pattern pointing in the reverse direction compared to the previous row. The arrow on the back side of the roll shows the correct laying direction. After tempering the unrolled floor covering trim the sheets to size on both ends with a 5 cm allowance, then place them on the sub-floor and align precisely edge-to-edge. The rolls should be installed lengthwise, following the direction of the sunlight as it falls on the floor. Fold back the flooring strips to half of their length before applying the adhesive.

### GLUING

We recommend using solvent-free low emission dispersion adhesives with Grabo commercial vinyl floorings. Two adhering methods can be advised – based on wet set adhesives and contact adhesives.

### WET GLUING

In case of hygroscopic sub-floors (concrete, sand/cement screed) the use of dispersion or emulsion acrylic adhesive is recommended. The adhesive should be stored in frost-free environment and tempered on the site at a temperature of at least 18°C for one day prior to installation. Stir up the adhesive thoroughly before use.

Recommended adhesives: Henkel Thomsit UK 400, Mapei Ultra/Bond ECO 350, F-Ball F/44.

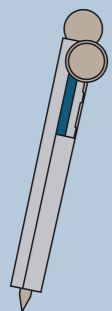
Spread the adhesive on the sub-floor using an A3 or a B1 notched trowel, maintaining the spread rate of approximately 300–400 g/m<sup>2</sup>. Be sure to check the condition of the notched strips regularly and re-cut as necessary. Always follow the adhesive manufacturer's instructions regarding the optimal quantity, the open time and the drying time of the adhesive. A shorter open time will lead to the appearance of air bubbles, whereas a longer open time will reduce the bonding capacity.

### CONTACT GLUING

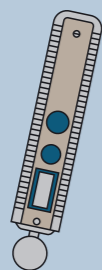
The use of contact adhesives can be recommended for both hygroscopic sub-floors (concrete, sand/cement screed) and impervious (PVC) substrates. Only contact adhesives should be used for impervious sub-floors.

## TOOLS AND EQUIPMENTS

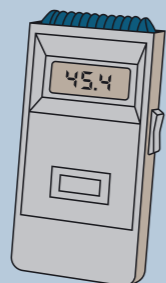
### SUB-FLOOR PREPARATION



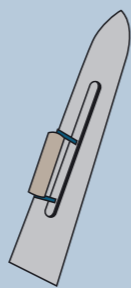
Sub-floor hardness tester



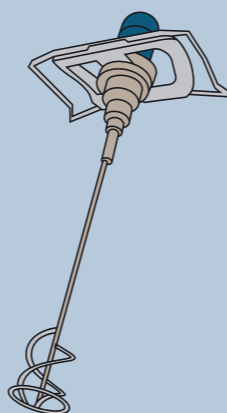
Equipment for structural moisture analysis (Hydromat CM-B or HB30)



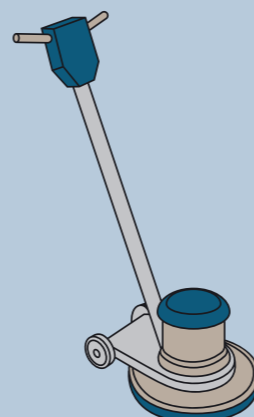
Equipment for measuring temperature and relative humidity (Digital Thermo-Hygrometer LVT10)



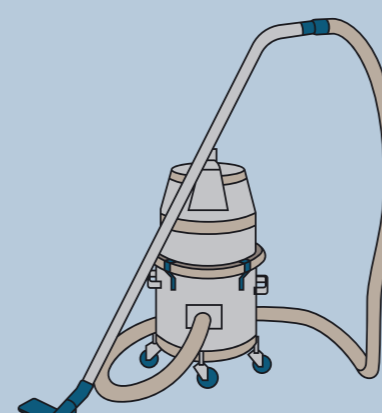
Flat trowel



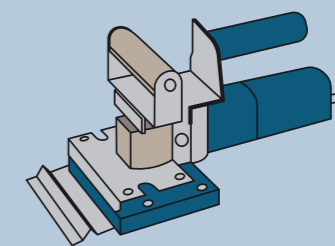
Hand mixer CX10 with suitable mixing blades



Rotary single disc polisher Columbus with accessories



Industrial vacuum cleaner Janvac 1600



Tools for stripping the existing floor covering (Compact stripper, Cosmo stripper)

Recommended adhesive: pressure sensitive, water based acrylate glue, like Thomsit K 188E, Uzin KE 2000S, or other brand equivalent with these. Apply the adhesive to the sub-floor and spread evenly using an A2 or A4 trowel and maintaining the spread rate of approximately 200–250 g/m<sup>2</sup>. Leave the adhesive to evaporate completely till it changes color from opaque to transparent yellow. After approximately 60–90 minutes test it with your finger, and if the adhesive is not tacky anymore, you can start the laying.

#### IN CASE OF VINYL SHEET FLOOR COVERINGS

Start to position the folded back flooring sheet onto the adhesive bed. To ensure good bonding, thoroughly smooth the flooring sheet, working from the center outwards, with the help of a manual cork rubber, confirming no air bubbles are trapped underneath. Finally roll the installed flooring using a 50–60 kg roller. Repeat the sequence to install the other half of the flooring sheet. In order to make site formed coved skirting, draw a line on the wall to mark the height the coving will reach and fit the capping strip to the wall using contact adhesive. Attach the cove former in a similar way: using a brush, apply contact adhesive to the back of the cove former and to the wall up to the capping strip and leave both to dry. When completely dry, firmly push the vinyl with the cove former into place and tuck the top edge into the capping strip.

#### IN CASE OF LVT

LVT planks are to be installed generally parallel to the main light source, usually this is the longer side. Carefully determine where to begin tile or plank installation. It is customary to centre rooms and hallways so borders are not less than half a tile or plank. In hallways and small places it is simpler to work lengthwise from one end using a centre reference line. Make sure cut edges are always against the wall.

In case of simple surface pattern, measure the size of the room and mark the straight starting line of the installation. The distance of the starting line from the deepest part of the wall should be minimum the width of the plank minus 2-3 cm, or multiple of the width of the plank minus 2-3 cm. Coat the adhesive on the subfloor with the spatula, coated surface should be max. 3-4 rows at the same time and wait until the adhesive will be dry. Make finger test! Follow always the instructions of the glue manufacturer. LVT should be installed by offsetting method. Starting on the starting line, place the LVT pieces side by side, glue them on the subfloor, and closely fit the edges of the planks to each other. If the last piece of LVT is longer than needed, mark and cut the plank installing the cut end next to the wall. The remainder of the LVT which has been cut off can be used to start the next row as long as it is minimum 20 cm. If the last piece in the row is a full plank, start the next row with a cut piece which has minimum 20 cm length, ideal case is to make half cut piece. Against the wall install cut edge piece. Place each LVT piece tight, against the adjoining element, and well embed in the adhesive. The next rows can be started with the pieces cut from the previous rows, minimum size of these pieces are 20 cm. After gluing roll down well the planks with a steel roller as well (weight 50-70 kg) in all directions, forward and back and diagonally. Prepare the skirting at the walls. Skirting can be made from the same LVT plank or from other plastic or metallic skirting, which is in harmony with the design of LVT. Use silicone seals between the joints of LVT and skirting.

#### WELDING

Welding (in case of sheet vinyl floor coverings) can be performed after no less than 24–48 hours upon installation, depending on the kind of the applied adhesive and the adhesive manufacturer's instructions.

#### HEAT WELDING

Application of heat welding is mandatory for wet areas and premises with underfloor heating. When the flooring is ready, the joints should be grooved to appropriate depth and width either manually, or with a power tool. For foam backed vinyl floorings the joints should be grooved to the depth of the upper (outer) layer; for firm dense surfaces the joints should be grooved to the 2/3 of the profile; the recommended groove width is 2–3 mm. The joints should be thoroughly cleaned from any debris. Use ø 4 mm GraboWeld welding rod for heat welding of the commercial vinyl floorings. Set the working temperature of the heat welding gun to approximately 300–400 C°. The welding can be carried out with the help of an automatic appliance or with a hand-operated welding set. Before starting the procedure, trial welding is recommended in order to set the optimal welding temperature and speed. After the welding seam has cooled down, remove the excessive welding rod in two steps. First cut off the top half of the welding rod using a quarter moon knife. After the remaining weld has cooled to the room temperature, perform the final trim.

#### HEAT WELDING IN THE CORNERS

From the perspective of the flooring external and internal corners are distinguished. Fitting of welds in internal corners can be performed in two ways: either by precision cutting and subsequent silicon filling of the seam, or by „half-rod“ welding. In the latter case, the welding rod cut-offs from the first trim can be used to fill in the vertical seams by pressing them into the vertical grooves with the rounded side down and then applying heat coagulation to the joints. The excess welding rod should be trimmed off. It is recommended to pre-heat the coves before welding the joints. Precision cutting is important for external corners as well. Corner welding should be performed with a welding rod.

#### COLD WELDING

Cold welding is another common technique used for the installation of commercial PVC floorings. This method ensures quick seam closing and is especially suitable for chip floors and all-over surfaces, as it produces an integral seamless covering for large areas.

The cold welding technique consists of four steps:

1. Place the PVC flooring strips so as they overlap for approximately 3–5 cm. Cut the sheets lengthwise along a metal rule and remove the cut-off waste from both the top and the bottom layer.
2. Center the masking paper tape over the closely cut joints of the PVC strips and press it on tightly with a roller to stop the cold welding paste from sneaking while being filled into the joint.
3. Cut through the masking tape simply and firmly along the seam with a circular cutter (or a trapezoid blade).
4. Thoroughly shake up the tube with the cold welding paste. Press the nozzle of the cold welding paste tube deeply into the joint with one hand and pull the tube along the joint. Use your other hand to dose the cold welding paste so that an approximately 5 mm wide line appears on the surface of the masking tape. Allow bonding for ten minutes and then remove the masking tape. The result is an almost invisible waterproof seam.

Use Werner Mueller cold welding paste Type A for sealing new PVC floorings and Type C to repair the existing surfaces. Successful cold welding requires the use of the tools and equipment shown in the picture. For details of cold welding technique see your language version of the manufacturer's site: [www.mueller-pvc-naht.de](http://www.mueller-pvc-naht.de)

#### SKIRTING

Plastic skirting is recommended for closing the edges along the walls. If Vaporex damp proof membrane has been used, a 5 mm air gap should be left along the walls during installation of the skirting. Installation guide to Grabo Muravyl wall covering

The wall surface will be covered by Grabo wall coverings should be clean, dry and dust free. The old wallpaper, old wall covering and old paint should be removed. The holes and hollows should be filled up with gypsum and the unevenness should be diminished. After the gypsum dried out, the surface should be abraded with fine sandpaper and made dust free. The surface should be treated with deep primer, e.g. Henkel "METYLAN". When installing the wall covering, the ideal room temperature is about 18-25°C and the relative humidity is around 50-60%. The installation can be started when the prepared wall (as above) is absolutely dry. The recommended glue type is Henkel Thomsit K 188 E and Uzin KE 2000S or other water based pressure sensitive glue, which has equivalent properties to these brands.

The wall covering should be cut in advance into the required length 24 hours before gluing. We recommend installing the wall coverings on the following way: The wall covering can be installed vertically or horizontally as well.

The glue should be applied with spatula A2 teeth onto the wall. (Consumption of glue is approx. 250-300gr/m<sup>2</sup>)

Before putting on the wall covering, you should make so called finger-press test on the glue. When no any particle of glue remains on your finger it is the right time to put the covering on the wall. Always follow the instructions of the manufacturer of the glue, keep waiting time according to the description. Put the wall covering cut to size beside each other so that the rolls cover/lap each other in a 2-3 cm wide stripe.

The hanging should be made with the help of the special brush, smoothing roller, rubber roller. The smoothing always should start from up to down direction and from the middle toward the edges. The air bubbles should be perfectly and carefully smoothed out from under the wall covering. After this you should cut the middle of the lapped 2-3 cm stripe (where the wall stripes meet) with a very sharp knife and with the help of a steel ruler. The cutting should be carried out on that way that the knife should cut both layers. Then the edges of the wall covering slightly should be raised so that the narrow stripes could be peeled off. This process should be made very carefully and slowly, so that there must be only 1 cut stripe. Then we smooth down again the edges (from up to down), and remove the residues of the glue if there is any, with a soft, wet sponge immediately. Should there glue residues remain on the surface of the wall covering you should remove it immediately by a wet, soft sponge.

We recommend cold welding or hot welding process to make the joints waterproof. Welding process can be started 24 hours after gluing.

## CLEANING AND MAINTENANCE

#### GENERAL NOTES

Regular cleaning and maintenance are crucial for the durability and attractive appearance of your flooring. The floor maintenance schedule is primarily determined by the intensity of the traffic load. Routine (daily) cleaning and periodical general maintenance are indispensable for preservation of the long-term appearance and performance of Grabo floor coverings. Apart from the approved maintenance products listed in this guide, other cleansers with similar parameters (chemical formulation and pH-value) are also compatible for use with Grabo commercial vinyl floorings. Do not use cleaning products that could damage the surface, e.g. abrasive cleaners or organic solvent-based detergents. As a general rule, always follow the detergent manufacturers' instructions and contact them for additional details when required. Cleaning and maintenance procedures for Grabo safety floorings are described in a separate user guide.

#### PREVENTIVE MEASURES

Most of the dirt, grit and moisture that will need to be cleaned from the floor surface arrive from the street. The majority of this soiling can be kept outside by using efficient dirt barrier systems of appropriate size. The maintenance regime depends to a great extent on how efficiently the dirt is stopped at the front door. Another point to consider is the use of high-quality heavy-duty plastic pads ("footies") to be attached to furniture legs to protect the floor from scratching. The newly installed floor covering needs a basic cleaning that should be later repeated between certain periods of use.

#### BASIC AND PERIODICAL CLEANING BY MACHINE

Remove solid dirt from the surface by sweeping or vacuum-cleaning. Tools: alkaline cleaning detergent, mono-disc cleaning machine with red pad and damp sweeping equipment.

#### TECHNOLOGY OF BASIC/PERIODICAL CLEANING

The cleaning solution should be dispersed on a surface of 5-10 m<sup>2</sup> area and should be scrubbed after an acting time of 10-15 minutes. Then the cleaning agent should be absorbed, the surface should be rinsed with clean water, and lastly, the water should be absorbed again. The periodical cleaning should be done with a frequency according to the grade of use.

#### DAILY CLEANING

Remove solid dirt from the surface by sweeping or vacuum-cleaning then make wet cleaning manually or with a mono-disc machine with white pad.

#### MANUAL WET CLEANING:

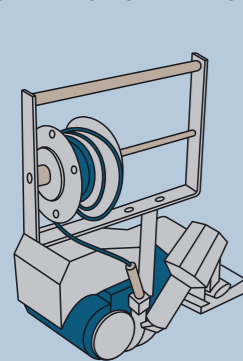
Tools: mop, (microfiber mop is the best), damp sweeping equipment, cleaning agent (generally neutral or light alkaline detergent) Cleaning should be performed with the two-bucket method.

#### MECHANICAL WET CLEANING:

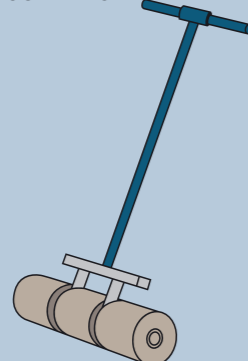
For daily mechanical cleaning use mono-disc cleaning machine with white pad. Use neutral or light alkaline cleaning agent. Never use abrasive products and any material that risks damaging of the surface. Never use rubber caps on furniture legs in order to avoid discoloration of the floor covering.

## TOOLS AND EQUIPMENTS

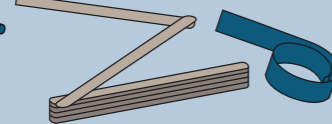
### INSTALLATION OF THE FLOOR COVERING



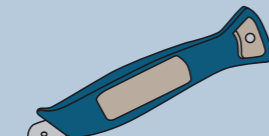
Sub-floor hardness tester



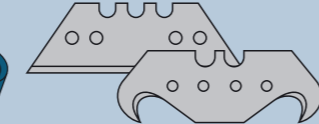
Hand roller 50 kg



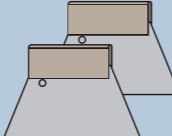
Tape measure, rule, steel ruler



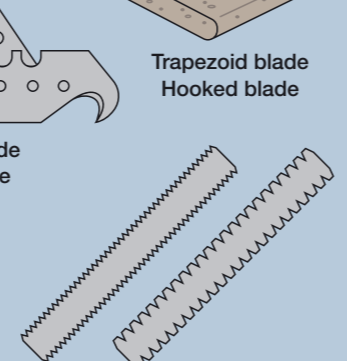
Safety cutter (Flipper 3000)



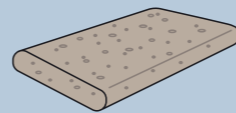
Trapezoid blade  
Hooked blade



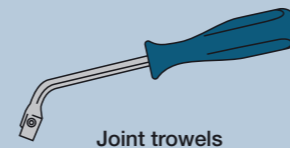
Adhesive trowels



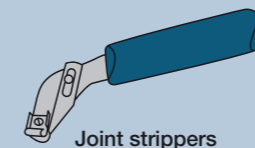
A2 serrated spatula  
B1 serrated spatula



Trapezoid blade  
Hooked blade



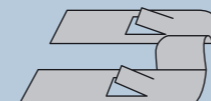
Joint trowels



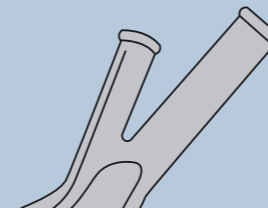
Joint strippers



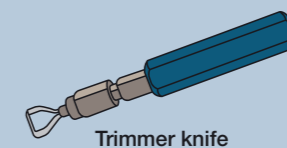
Quarter moon knife



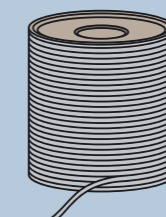
Weld trimmer



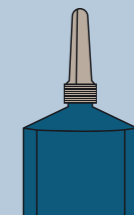
Standard welding nozzles  
(speed weld nozzle,  
universal nozzle)



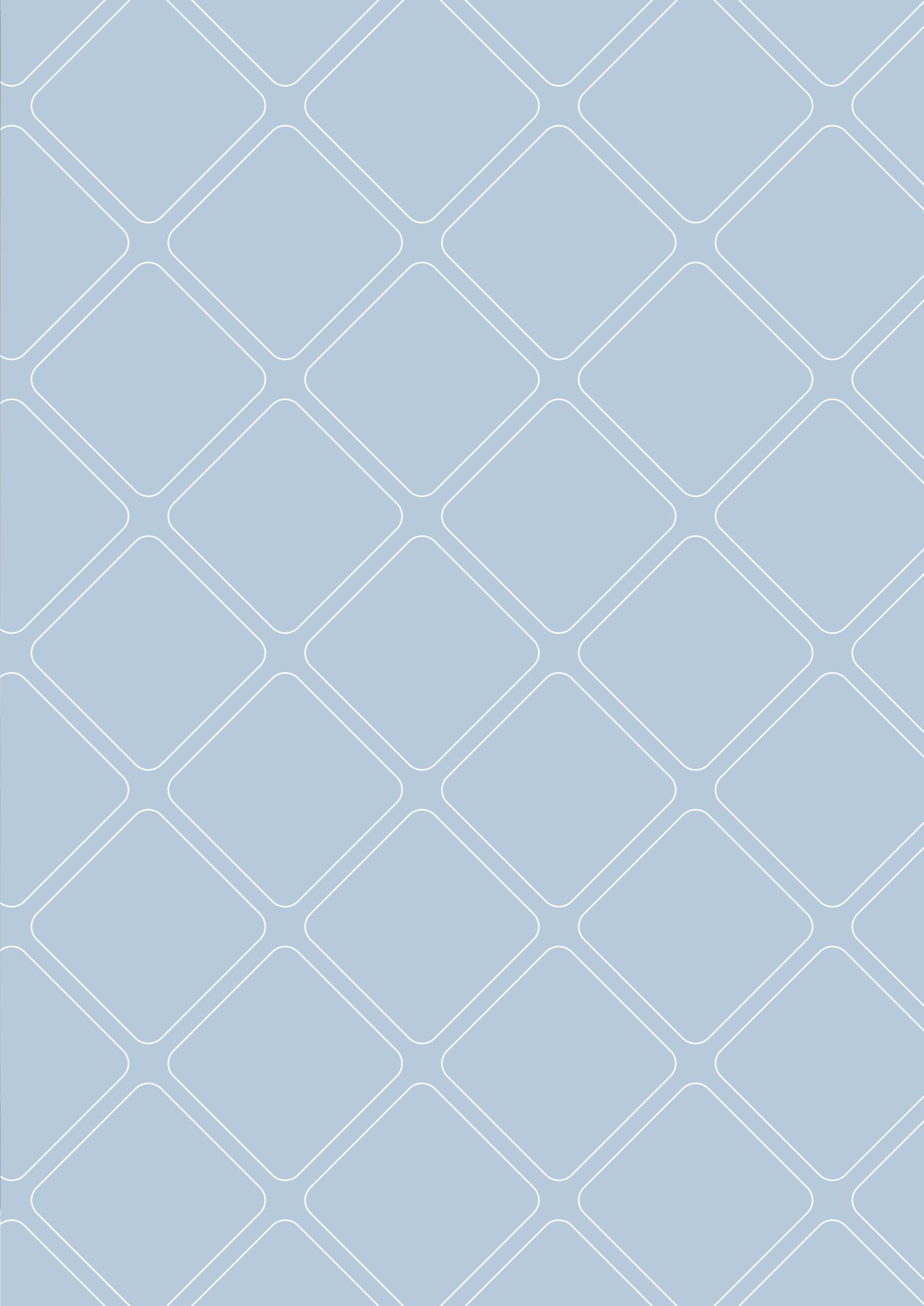
Trimmer knife  
(for corners and edges)

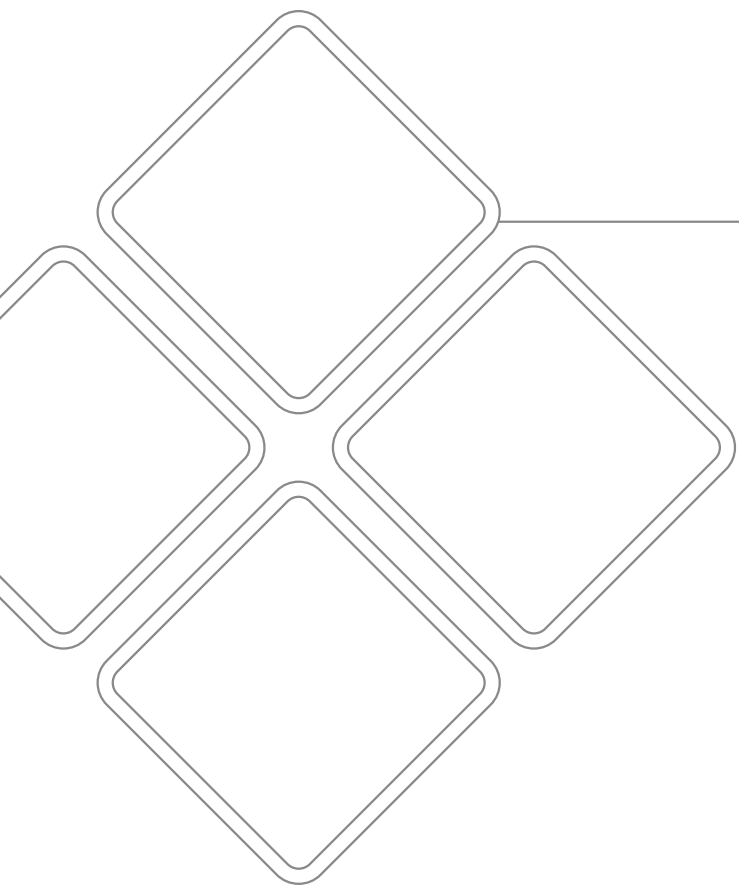


GraboWeld welding rod  
for heat welding



Cold welding paste





**GRABOPLAST**  
**Floor Covering Manufacturers Ltd.**  
H-9023 Győr, Fehérvári út. 16/b. Telefon: (+36) 96 506-100  
[www.graboplast.com](http://www.graboplast.com)



[www.facebook.com/graboplast](https://www.facebook.com/graboplast)