

Macklin Controls UK standard G59 Relay operation is as follows:

Macklin Controls UK builds G59/3 compliant control panels to enable micro-generators to be linked directly to the customers supply connections. This also enables customers to sell back their excess energy to the supply authorities when their own consumption drops.

Designed with the aim of satisfying the G59/2, G59/3 ETR113, G77, G83 and G10 guidelines.

Units can be supplied in single or three phase from 3kw upwards.

Macklin Controls aims to provide its customers with a personal service & comprehensive package from the design to final build.

Available protections:

- Over/under voltage
- Voltage asymmetry
- Over/under frequency
- Vector shift
- ROCOF
- Directional over current
- Neutral voltage displacement
- Reverse power

Mains measurement:

- Phase to neutral, phase to phase
- Frequency
- Power factor
- Active/reactive power
- Apparent power

All available in a Micromac Panel.

Other items we can provide:

- AC & DC Isolators
- PV Distribution
- String Boxes
- Energy Meter in Enclosures
- Export Limiter Control Units



MACKLIN
CONTROLS UK

▶ G593 Relay & Export Limiter

ENCLOSED

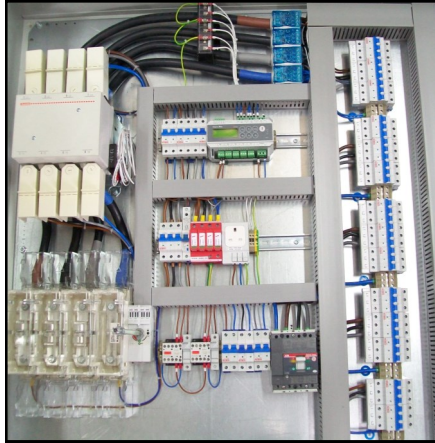
- ♦ **G59 Relay—Micromac Range**
- ♦ Single, Split phase and 3phase
- ♦ Load limiter control units

FEATURES

- ♦ **Enclosure IP65 protection**
- ♦ **Enclosure size to suit**
- ♦ **Variety of enclosure types mild steel, stainless steel and GRP.**
- ♦ **Isolator with black handle, padlockable in the Off position.**
- ♦ **Switch interlocked with lid to prevent opening in the On position.**
- ♦ **Larger terminals for cables**
- ♦ **Surge protection**
- ♦ **Circuit breakers**
- ♦ **Energy Meters**
- ♦ **Testing socket din rail mounted**
- ♦ **Testing & Commissioning**

Phone: 01635 40122
Fax: 01635 231170
sales@macklincontrols.co.uk
www.macklincontrols.co.uk

Unit E1 & E2,
 Raceview Business Centre,
 Hambridge Road, Newbury,
 Berkshire, RG14 5SA



G59 Relay - Micromac Range

PART NUMBER	KW	CONTACTOR	ENCLOSURE SIZE
MICROMAC 3PN 41-60 G59*	41-60	72KW	600 x 500 x 210mm
MICROMAC 3PN 61-75 G59	61-75	82KW	800 x 600 x 210mm
MICROMAC 3PN 76-98 G59	76-98	98KW	1000 x 600 x 300mm
MICROMAC 3PN 99-150 G59*	99-150	150KW	1000 x 800 x 400mm
MICROMAC 3PN 151-200 G59	151-200	214KW	1000 x 800 x 400mm
MICROMAC 3PN 201-270 G59	201-270	270KW	1200 x 800 x 400mm
MICROMAC 3PN 271-345 G59	271-345	345KW	1200 x 800 x 400mm
MICROMAC 3PN 345-500 G59	345-500	500KW	1800 x 800 x 400mm

We can also provide various other options.
Contact us for more information.

* Stock items



Export Limiting Control Units

EXPORT LIMITER

Description

This solution is required when the total amount of export generation exceeds the supply authorities export allowance. The export limiter monitors the total export energy and controls the output from one or more Inverters to balance the output from the generation system to match the site consumption and limit the total amount of export to a pre-set level as defined by the Distribution Network Operator. This system can be configured to suit any generation requirement.

EXPORT FAIL SAFE

Description

This solution is required when the total amount of generation exceeds the capability of the supply authority connections and the Distribution Network Operator requires a failsafe backup to an existing control system. The export limiter monitors the total export energy and will instantaneously disconnect the load from the supply if the normal system fails and the total export energy exceeds the pre-set level as defined by the Distribution Network Operator. This will shut down the generated power on site.



MACKLIN
CONTROLS UK

Phone: 01635 40122
Fax: 01635 231170
sales@macklincontrols.co.uk
www.macklincontrols.co.uk

Unit E1 & E2,
Raceview Business Centre,
Hambridge Road, Newbury,
Berkshire, RG14 5SA