

## Left Hand Reverse

Pull over to the left hand side of the road and stop. (Use the same M.SM. routine as you would for pulling in and stopping). Choose a safe place where there is good visibility, no obstruction in the road or on the pavement, make sure the place you select is Convenient, watch out for lamp posts, telephone poles or even post boxes that are close to the edge of the footpath. Make sure your indicators have cancelled.

Now Carry out ALL ROUND OBSERVATION before moving of...

Look out the front - look into the rear- look into your left side mirror and look over your left shoulder - look out the front - look into the rear mirror - look into your right side mirror and look over your right shoulder if it's clear clutch down, 1st gear and set the bit - check mirror mirror blind spot to the right, if it's still clear release the hand brake and allow the car to move forward.

As you move forward towards the other side of the road look into the street that you will be turning into.



Check if there are any obstruction or pedestrians around. Look at the shape of the curb (I will talk about that shortly). Decide how much of a turn you are going to put on ...  $\frac{3}{4}$ . 1.. or full lock ( $1\frac{1}{2}$ ) turns of the wheel. Continue forward past the junction and stay slightly out from the curb than normal, look into your rear view mirror and wait till the curb that you are going to go round appears in the back window, at this point stop. Don't forget to use your MSM routine for pulling in and stopping. Once you have stopped apply your hand brake and select neutral.



Now for the Reverse part. Adjust your seating Position so you can see over your left shoulder and out through the rear window comfortably.



Don't forget to look out the front before moving and always look out the rear when reversing. Start to reverse in a straight line staying parallel and reasonably close to the curb, when you see the curb that you are going to go round disappear STOP. There is no need to apply the hand break as you will only be stopping for a very short time, enough to have a quick look all round.



If it is clear start to reverse until you see the gap between the pointy part of the wheel arch and the curb start to get bigger.

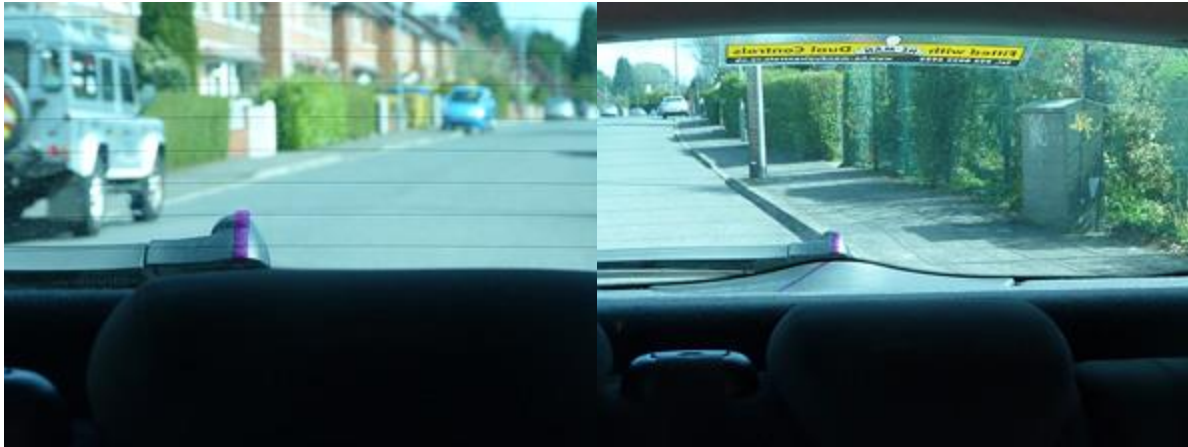


The first picture shows the gap is still ok ... the second picture shows the gap getting bigger ... this is the point of turn.

You should now turn the steering wheel to the LEFT. The amount you turn depends on the shape of the curb. The tighter the curb turn the more you turn the steering wheel, so either turn the wheel  $\frac{3}{4}$  of a turn -1turn or  $1\frac{1}{2}$  turns depending on the corner.

Make sure to give a quick look to the front and a glance over your right shoulder before you start turning the wheel. Make sure you know how much of a turn you are going to put on and do it in one quick movement. As you turn have a glance into your right mirror, if you can't see the street behind you then look over your right shoulder, you can do this by stopping but it's not essential to stop.

No looking out the rear window and the side window looking into the street you are reversing into. As you look out the rear window you will notice the little black line in the middle of the window is now in the middle of the street, now it is moving towards the curb, as it touches the face of the curb straighten up the steering wheel, your wheel is now in a straight line and the car will be at a slight angle to the curb.



### **Dry Steering**

Make sure that the wheels on the ground are moving when turning the steering wheel, otherwise this will cause damage to the steering column. (You will also be marked down on your test for this)

### **Pedestrians and other vehicles**

If while you are reversing into the new street you see another coming towards you, you must STOP...if they stop and if they are far enough away, then continuing on back 2-3 car lengths and stop reasonably close to the curb.

But

If the vehicle comes up behind you then STOP. apply the hand brake, select 1st gear and move back round to the start point, again remember to use MSM when pulling in. Once it is clear , continue on with the manovuer.

Or

If as you are reversing into the new street another vehicle approaches you , then again you must STOP. If the vehicle continues to the right hand side of you, allow him to continue and when he has cleared the junction then continue on back into the new street.

Always remember, when doing this and any of the other manoeuvres, if another vehicle or pedestrians come anywhere near you then you must stop, wait and see what they are doing.

If they stop then you move.

If they move then you must stop.

It's like a game of cat and mouse.

GOOD LUCK!

