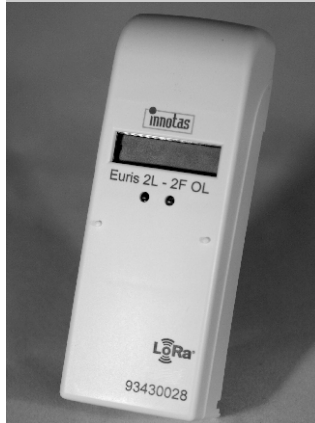


wireless
applications

LoRa-EHCA (long design)



- LoRa-WAN radio (bi-directional)
- optical interface
- 18 monthly measurements + 1 due date value
- due date value secured with check number
- device PIN for optical interface
- lifespan >10 years
- OTAA / APB commissioning possible
- optionally with remote sensor

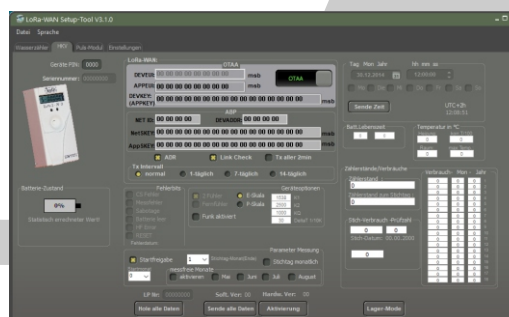
LoRa is a registered brand name of the Semtech company

Product description

The Euris2-LORA is a modern 2 sensor heat cost allocator with optical interface and bidirectional LoRa™ radio and offers a very large radio range.

- ✓ precise electronic consumption recording
- ✓ internal measures against incorrect counting
- ✓ measurement break can be activated in summer months
- ✓ maintenance-free operation for over 10 years
- ✓ freely parameterizable via optical interface
- ✓ measurement service available independently
- ✓ optical interface secured by device PIN
- ✓ LoRaWAN™ Radio
- ✓ commissioning mode when the LoRa™ radio is activated

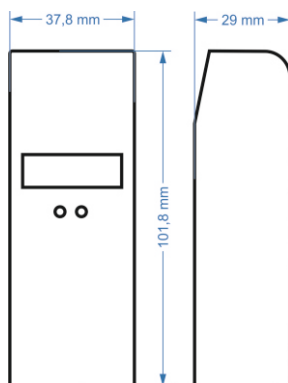
Free configuration software



The operator/user can parameterize the devices according to his wishes. The communication with the device is secured with a PIN that protects the device against unauthorized access. The PIN can also be set or activated via LoRa™.

LoRa-EHCA (long design)

wireless
applications



The EHCA has a rolling display that is activated every 2 minutes. Due to the „long“ design it is particularly suitable for the concealment of renovation-related paint defects on the radiator. Another optical extension can be snapped on. Automatic activation takes place through attachment recognition.

Power supply	Battery 3V DC
Operating time of one battery	10 +2 years
Interfaces	optical, contact
Radio interface	LoRaWAN radio
Protocols	LoRaWAN Port1, Port2
Safety	encryption in the context of LoRaWAN
Temperature sensor	1 or 2
Reference date	Last day of the month, adjustable
Optical interface	IRDA with password protection
CE conformity according to	Directive 2014/53/EU (RED)
Communication	LoRaWAN™
Specification LoRaWAN™	V10.2
Radio frequency band EU	863 MHz-870 MHz
Transmission power (ERP)	max. 14 dBm
Rx Sensitivity	up to -140dBm
Radio cycles	typically 2 hours
Activation of radio	Opto head / optional activation head / attachment
t _{min}	35°C
t _{max}	95°C
Measured value memory	Counter reading, reference value, 18 monthly values
Display	7 1/2 digits
Certification mark	approved according to HKVO / CE