

*wireless
applications*

LoRa-Wireless water meter attachment



Properties/Features:

- LoRaWAN™ radio (bi-directional)
- Optical interface
- Inductive sampling
- for Modularis counting shaft
- Device PIN for optical interface
- Lifespan > 12 years
- OTAA / APB commissioning possible
- LED for signaling
- Variants with max. 14 dBm or 20 dBm

LoRa is a registered brand name of the Semtech company

Product description

The LoRaWAN™ water meter attachment records and processes the counting pulses from water meters with Modularis metering shaft (E. Wehrle GmbH, Wasser-Geräte GmbH, Meibes Systemtechnik GmbH, Maddalena GmbH, QUNDIS and others).

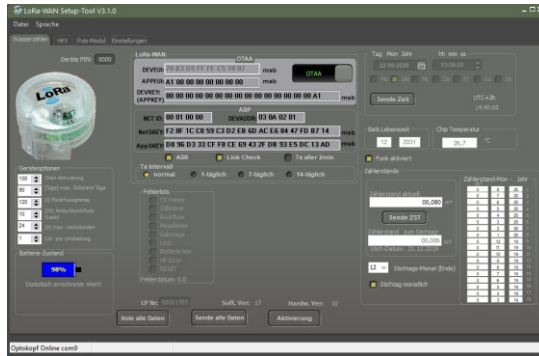
Single-jet and multi-jet dry dial water meters as well as annular piston and measuring capsule water meters can be used. A retrofitting is possible at any time.

The water meter attachment is integrated into a LoRaWAN™ network and provides the following data:

- Current meter reading
- Meter reading on the due date (annually)
- Due date month, adjustable
- Maximum flow of the last day
- Minimum flow of the last day
- Last day downtime
- Number of attempts on the last day
- Hourly flow
- Error and status information
- Information about the type and number of telegrams sent (on request)

LoRa-Wireless water meter attachment

wireless applications



Free configuration software. The operator can parameterize the device according to his wishes. The communication with the device is secured with a PIN that protects the device from access through unauthorized persons. The PIN can also be set or activated via LoRaWAN™.

Measuring principle	inductive scanning, permanently active backflow detection and correction
Resolution	1 liter
Nominal flow rate	EWG: QN 1,5 – QN 15 MID: Q3 2,5 - 25
Sabotage detection	in the event of magnetic manipulation
Dismantling protection	adhesive seal
Measuring cycle	permanent scanning
Due date	last day of the month, adjustable
Optical interface	IRDA with password protection
Power supply	lithium battery 3V
Lifespan	12 years + reserve
CE conformity	according to directive 2014/53 / EU (RED)
Communication	LoRaWAN™
Specification LoRaWAN™	V10.2
Radio frequency band EU	863 MHz - 870 MHz
Transmission power (ERP)	max. 14 dBm / 20 dBm
Rx sensitivity	down to -140dBm
Radio cycles	typically 2 hours
Activation of radio	automatically after adjustable flow rate Irda opto head / optional activation head
Protection class	IP 68, immersed 1m for 4 weeks
Operating temperature	0°C - 60°C
Storage temperature	-25°C – 60°C
Dimensions	approx. 63mm x 63mm x 41mm
Weight without packaging	42g