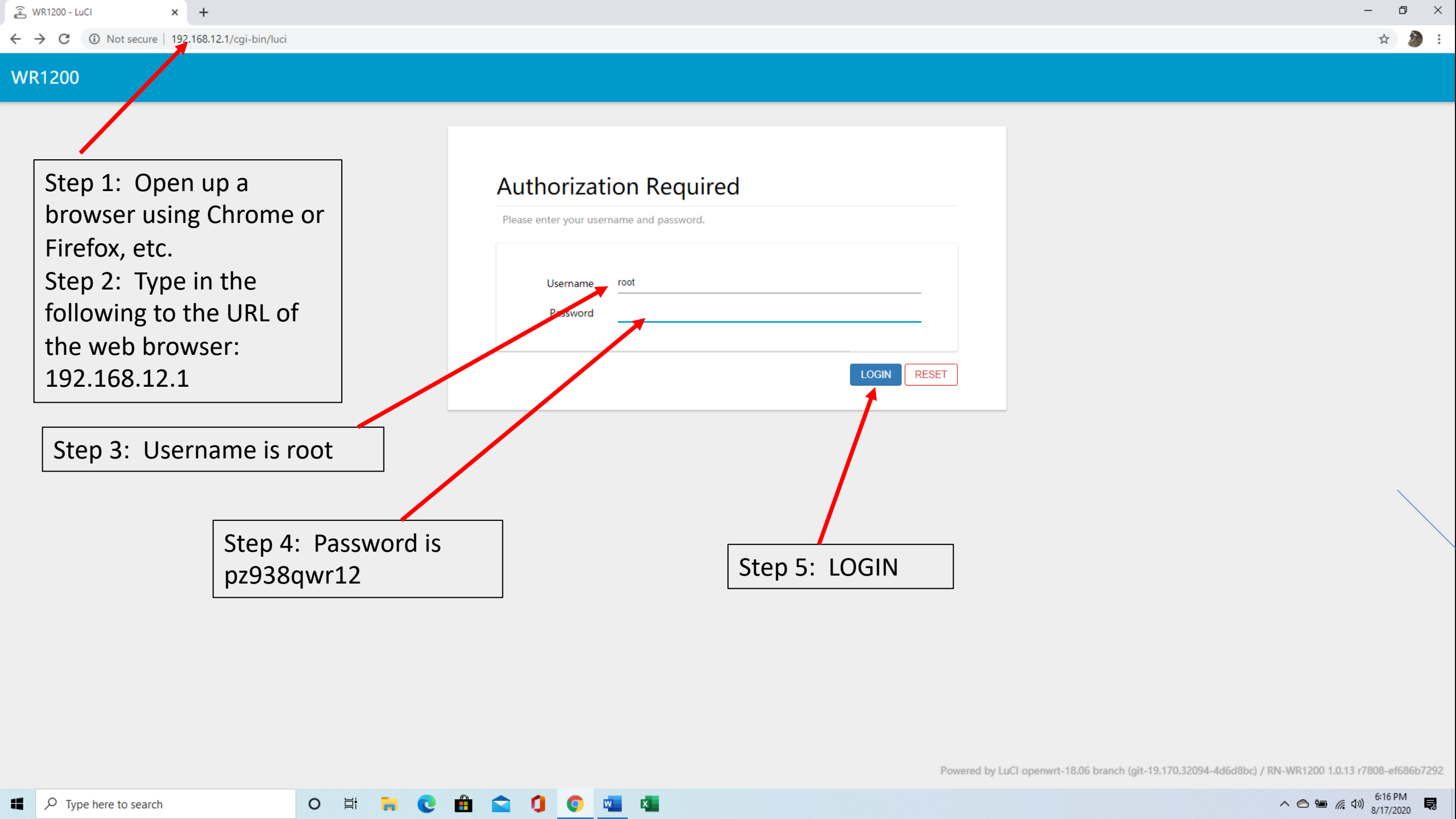




Setting up the WR1200 as a Wireless Mesh Repeater



Step 1: Open up a browser using Chrome or Firefox, etc.
Step 2: Type in the following to the URL of the web browser:
192.168.12.1

Step 3: Username is root

Step 4: Password is
pz938qwr12

Step 5: LOGIN

Authorization Required

Please enter your username and password.

Username root

Password

LOGIN

RESET

WR1200 - Overview - LuCI

Not secure | 192.168.12.1/cgi-bin/luci/

AUTO REFRESH ON

WR1200

Status

Overview

Firewall

Routes

System Log

Kernel Log

Processes

Realtime Graphs

System

Services

Network

Interfaces

Wireless

Switch

DHCP and DNS

Hostnames

Static Routes

Diagnostics

Firewall

QoS

Logout

Status

Step 6: Select "Wireless"

System

HostnameWR1200

ModelWR1200

ArchitectureMediaTek MT7621 ver:1 eco:3

Firmware VersionRN-WR1200 1.0.13 r7808-ef686b7292 / LuCI openwrt-18.06 branch (git-19.170.32094-4d6d8bc)

Kernel Version4.14.131

Local TimeMon Aug 17 19:09:16 2020

Uptime11d 23h 49m 18s

Load Average0.02, 0.06, 0.08

Memory

Total Available462756 kB / 513204 kB (90%)

Free457464 kB / 513204 kB (89%)

Buffered5292 kB / 513204 kB (1%)

Network

IPv4 Upstream

Protocol: DHCP client

Address: 192.168.11.69

Netmask: 255.255.255.0

Gateway: 192.168.11.1

DNS 1: 192.168.11.1

DNS 2: 192.168.11.1

Expires: 23h 32m 31s

Connected: 0h 27m 29s

Device: Wireless Network: Client "LTE52021151C"

MAC-Address: 00:01:9F:0A:01:D6

IPv6 Upstream

Protocol: Not connected

Address: ::

Gateway: ::

Device: -

192.168.12.1/cgi-bin/luci/admin/network/wireless

Type here to search

6:09 PM8/17/2020

WR1200 - Wireless - LuCI

192.168.12.1/cgi-bin/luci/admin/network/wireless

AUTO REFRESH ON

Status

System

Services

Network

Interfaces

Wireless

Switch

DHCP and DNS

Hostnames

Static Routes

Diagnostics

Firewall

QoS

Logout

radio0: Client "LTE52021151C" radio1: Master "ReadyNet WR1200"

Wireless Overview

radio0

Generic MAC80211 802.11bgn
Channel: 1 (2.412 GHz) | Bitrate: 180 Mbit/s

82%

SSID: LTE52021151C | Mode: Client
BSSID: 00:01:9F:0A:01:D6 | Encryption: WPA2 PSK (TKIP, CCMP)

RESTART SCAN ADD

radio1

Generic MAC80211 802.11nac
Channel: 36 (5.180 GHz) | Bitrate: 433.3 Mbit/s

98%

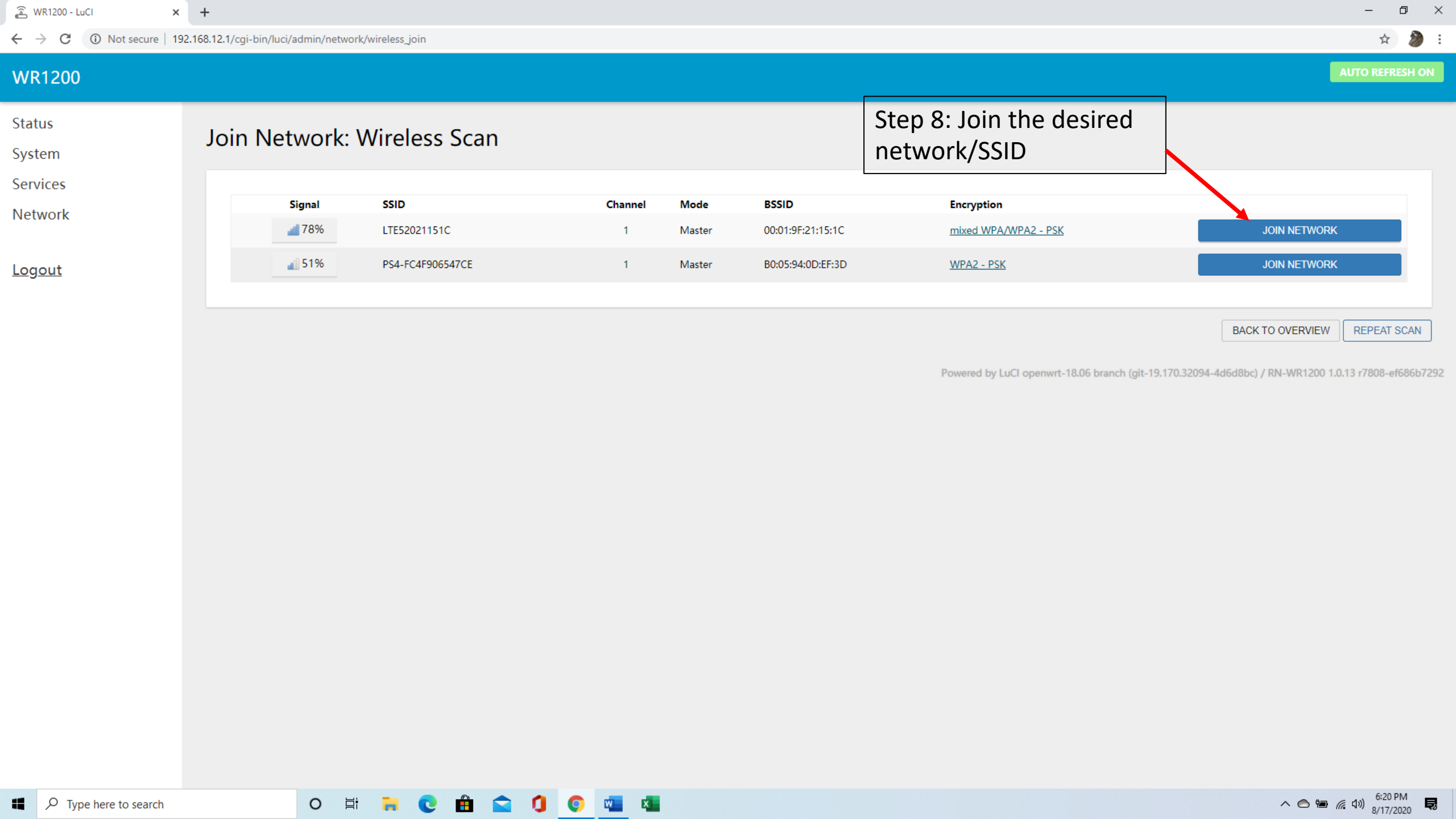
SSID: ReadyNet WR1200 | Mode: Master
BSSID: 00:01:9F:0A:01:D7 | Encryption: mixed WPA/WPA2 PSK (CCMP)

RESTART SCAN ADD

Associated Stations

Network	MAC-Address	Host	Signal / Noise	RX Rate / TX Rate
Master "ReadyNet WR1200" (wlan1)	8C:C8:4B:DA:45:57	DESKTOP-820502Llan (192.168.12.11)	-41 / 0 dBm	433.3 Mbit/s, 80MHz, VHT-MCS 9, VHT-NSS 1, Short GI 433.3 Mbit/s, 80MHz, VHT-MCS 9, VHT-NSS 1, Short GI
Client "LTE52021151C" (wlan0)	00:01:9F:21:15:1C	192.168.11.1	-53 / 0 dBm	1.0 Mbit/s, 20MHz 180.0 Mbit/s, 40MHz, MCS 12, Short GI

Powered by LuCI openwrt-18.06 branch (git-19.170.32094-4d6d8bc) / RN-WR1200 1.0.13 r7808-ef686b7292



Joining Network: "LTE52021151C"

Replace wireless configuration

☒

Check this option to delete the existing networks from this radio.

WPA passphrase

.....

Specify the secret encryption key here.

Name of the new network

wwan

The allowed characters are: A-Z, a-z, 0-9 and _

Create / Assign firewall-zone

wan: wan: wan6: wwan:

Choose the firewall zone you want to assign to this interface. Select *unspecified* to remove the interface from the associated zone or fill out the *create* field to define a new zone and attach the interface to it.

BACK TO SCAN RESULTS

SUBMIT

WR1200 - Wireless - LuCI

192.168.12.1/cgi-bin/luci/admin/network/wireless/radio0.network1

UNSAVED CHANGES: 11

AUTO REFRESH ON

Status

System

Services

Network

Interfaces

Wireless

Switch

DHCP and DNS

Hostnames

Static Routes

Diagnostics

Firewall

QoS

Logout

Device Configuration

General Setup

Advanced Settings

Status

82%

Mode: Client | SSID: LTE52021151C

BSSID: 00:01:9F:0A:01:D6

Encryption: WPA2 PSK (TKIP, CCMP)

Channel: 1 (2.412 GHz)

Tx-Power: 29 dBm

Signal: -52 dBm | Noise: 0 dBm

Bitrate: 180.0 Mbit/s | Country: US

Wireless network is enabled

DISABLE

Operating frequency

Mode

N

Channel

1 (2412 MHz)

Width

40 MHz

Transmit Power

30 dBm (1000 mW)

dBm

Interface Configuration

General Setup

Wireless Security

Advanced Settings

Mode

Client

ESSID

LTE52021151C

BSSID

00:01:9F:21:15:1C

Network

wwan:

Choose the network(s) you want to attach to this wireless interface or fill out the create field to define a new network.

BACK TO OVERVIEW

SAVE & APPLY

SAVE

RESET

Step 12: Make sure Wireless network is "Enabled"

Step 13: SAVE & APPLY

Powered by LuCI openwrt-18.06 branch (git-19.170.32094-4d6d8bc) / RN-WR1200 1.0.13 r7808-ef686b7292

Type here to search

6:23 PM

8/17/2020