



DR. GABRIELE CARUSO
Cagliari, Italy

ALESSANDRO CATTANEO
Dental Technician
Cagliari, Italy

Replacement of congenitally missing upper lateral incisors with Straumann® Implants



CASE OVERVIEW

In 1999, the 22 year old patient presented with congenitally missing upper lateral incisors after having undergone orthodontic treatment at age 17.

A Straumann® Standard Implant (endosseous Ø 3.3 mm, Regular Neck, length 12 mm), was placed in position 12 (FDI) and a Straumann® Hollow Cylinder Dental Implant, (endosseous Ø 3.5 mm, Regular Neck, 15° angulation, length 12 mm) was placed in position 22 (FDI).

Figure 1:

OPT before implant placement.

Figures 2 and 3:

Clinical situation, labial and incisal aspect, displaying congenitally missing upper lateral incisors; status after orthodontic treatment.

Figure 4:

A Standard Implant, endosseous Ø 3.3 mm, Regular Neck, length 12 mm, was placed in position 12 and covered with a bone substitute material.



Figure 5:
A Hollow Cylinder Implant, endosseous Ø 3.5 mm, Regular Neck, 15° angulation, 12 mm length, was placed in position 22.

Figure 6:
In the dental lab, two transversally screw retained crowns were fabricated utilizing gold copings on Octa abutments.

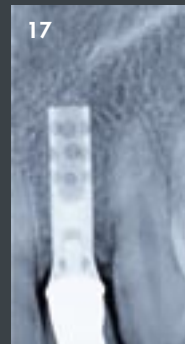
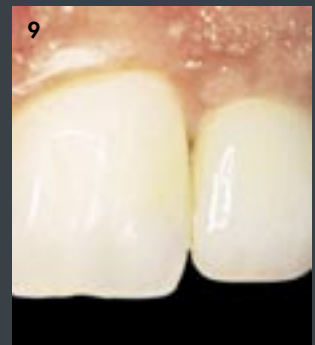
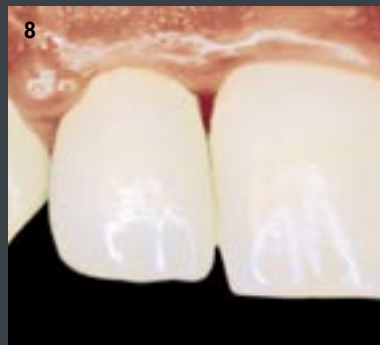
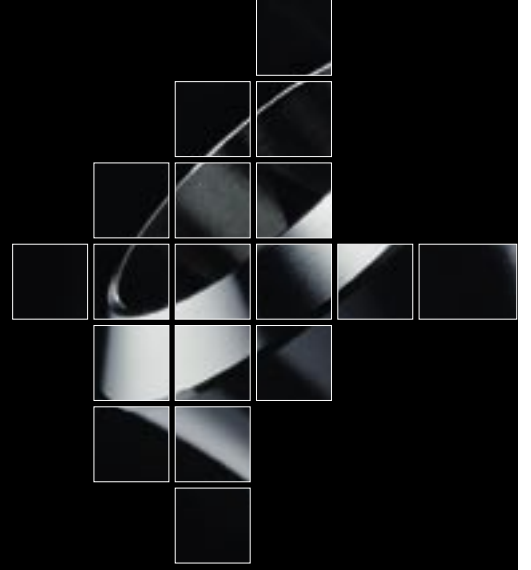
Figure 7:
Eight months after implant placement, the definitive crowns were installed on the implants. Picture taken immediately after crown installation in 1999.

Figure 8:
Close-up view of the missing papilla mesial to the crown in position 12 immediately after crown installation.

Figure 9:
Close-up view of the partially missing papilla mesial to the crown in position 22, also immediately after crown installation.

Figure 10:
Palatal aspect immediately after crown installation.

Figure 11:
Labial aspect in 2004, 5 years after implant loading.



Figures 12 and 13:
Close-up view of the papillae mesial to the crowns in positions 12 and 22 in 2004, 5 years after implant loading.

Figure 14:
Palatal view, 5 years postloading.

Figure 15:
The patient's smile displays the harmony of well integrated implant borne crowns and healthy, esthetic soft tissue (2004).

Figures 16 and 17:
Radiographic control of the implants at 5 year follow-up in 2004 presenting stable bone contours.

Figures 18 and 19:
Radiographic control of the implants at 6 year follow-up in 2005.