

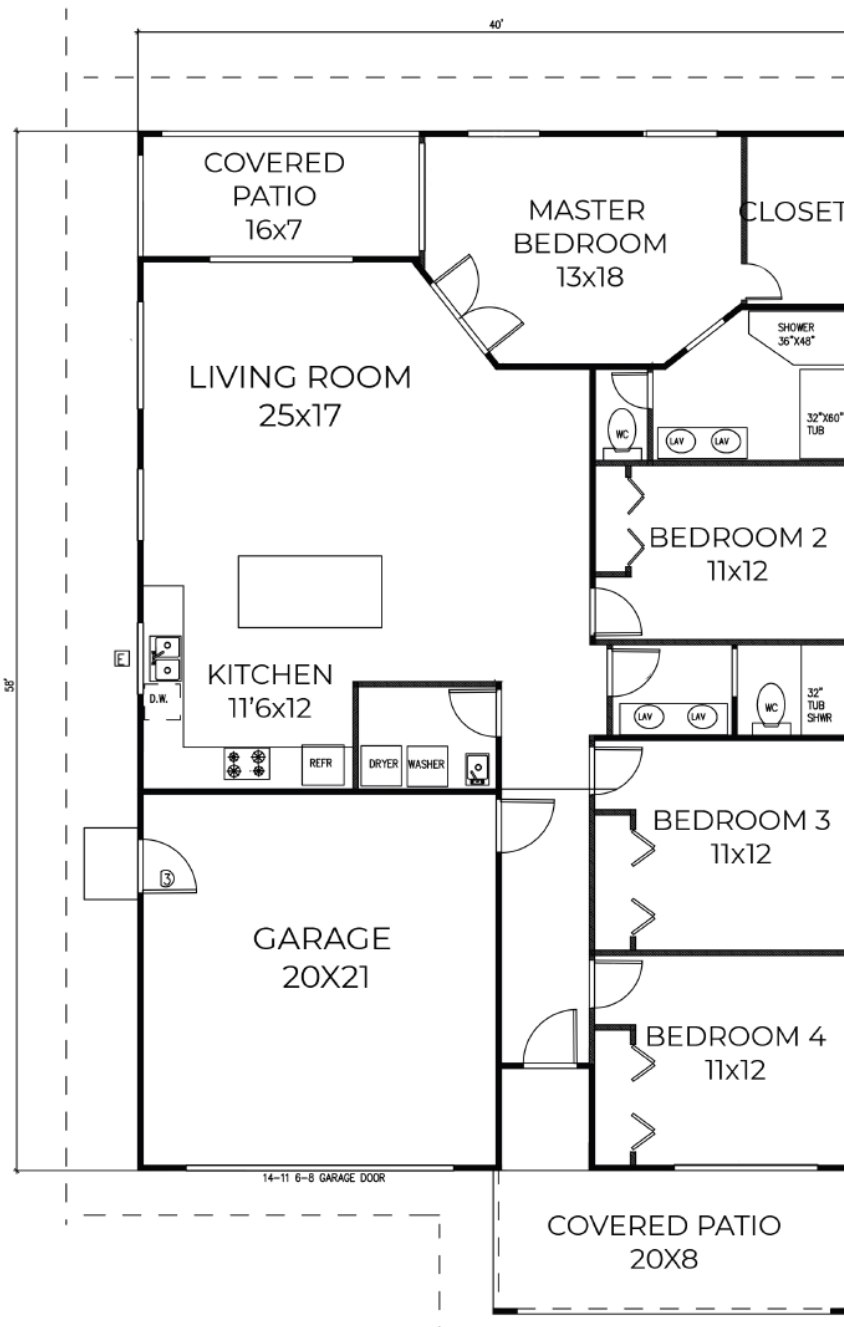


Discovery Harbour
at Na'alehu

'Ilima starting at \$379,000

Model: 'ILIMA
4 BEDROOM, 2 BATHROOM

LIVING AREA - 1788 SQ. FT
COVERED PATIO - 72 SQ. FT
GARAGE - 420 SQ. FT
TOTAL AREA - 2480 SQ. FT



By AMKO Builders
ABC-32736
servicing all islands



Discovery Harbour



GERMAINE K. HOPKINS
REALTOR-Associate
808.282.7555
Germaine@ElitePacific.com
www.GermaineHopkins.com



4211 Waialae Ave., Ste 106
Honolulu, Hawaii 96816



NANETTE N. LONTAYAO
Sales Production Manager
NMLS #364813
808.285.4416
Nlontayao@Mahiloans.com



Mortgage Associates of Hawaii
a division of American Pacific Mortgage Corporation
NMLS #1850

970 N Kalaheo Ave., Ste C313
Kailua, HI 96734