



*Discovery
Harbour*
at Na'alehu

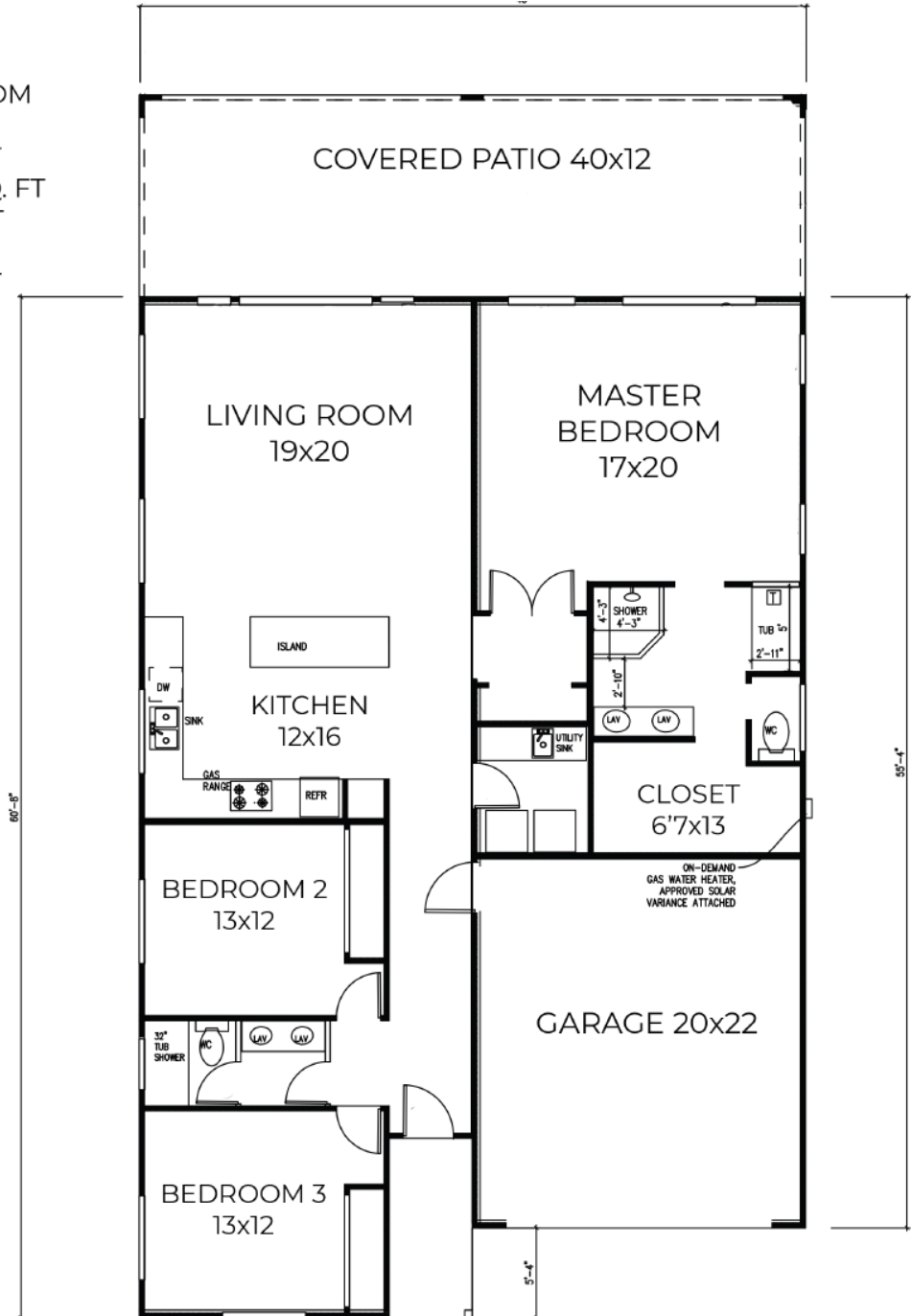
By AMKO Builders
ABC-32736
servicing all islands

Lokelani

 starting at \$389,000

Model: **LOKELANI**
3 BEDROOM, 2 BATHROOM

LIVING AREA - 1827 SQ. FT
COVERED PATIO - 480 SQ. FT
FRONT PORCH - 52 SQ. FT
GARAGE - 440 SQ. FT
TOTAL AREA - 2799 SQ. FT





Discovery Harbour



GERMAINE K. HOPKINS
 REALTOR-Associate
 808.282.7555
 Germaine@ElitePacific.com
 www.GermaineHopkins.com



4211 Waiālae Ave., Ste 106
 Honolulu, Hawaii 96816



NANETTE N. LONTAYAO
 Sales Production Manager
 NMLS #364813
 808.285.4416
 Nlontayao@Mahiloans.com



Mortgage Associates of Hawaii
 a division of American Pacific Mortgage Corporation
 NMLS#1850
 970 N Kalaheo Ave., Ste C313
 Kailua, HI 96734