



# **WPT-1000**

## **Wireless Probe**

## **Transmitter**

**Owner's Manual**



## **Compliance**

Complies with AS/NZS 4268 of 2003

## **Installation:**

The WPT-1000 transmitter is used with the Farm Alarm™ WR-1000 receiver. The WPT-1000 transmitter uses a magnetic probe and 15 metres of direct burial cable to detect vehicles at the monitored location. When the transmitter detects a vehicle it will send a signal to the receiver which will sound one of 4 different tones (Classical , Westminster Chime, Ding Dong, Whistle) for a few seconds. The transmitter can be used to monitor driveways, drive-up windows, etc.

## **Operation:**

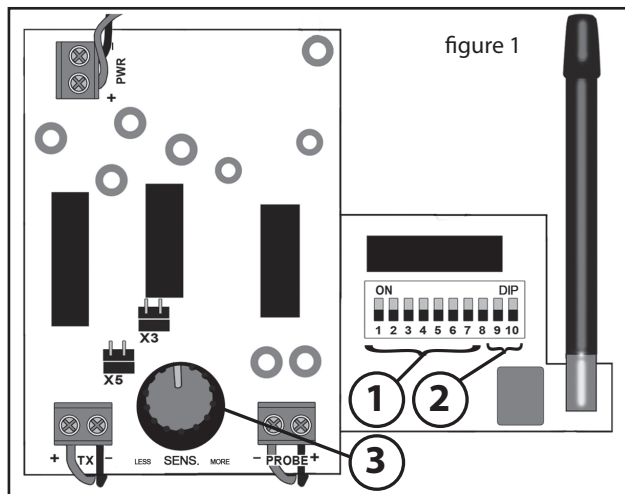
1. Connect a 9 volt alkaline battery to the transmitter. (figure 1)
2. Set the dip switches 1-8 on the transmitter module to match the receiver.
3. Set dip switches 9 & 10 (in transmitter) to control the desired zone, tune and relay output.
4. Bury the probe parallel and next to the driveway and bury the wire over to a tree or post.
5. Mount the transmitter box on a tree or post a minimum of 1.2 metres off the ground.
6. Please read important tips and hints on page 7.

For maximum range between the transmitter and receiver, the transmitter should be mounted on a wooden post or tree (steel posts may cause interference with the radio signal). Although the maximum range is about 1000 metres, things such as hills, trees, and metal siding can all reduce the range.

### Coding the transmitter:

1. Locate the dip switches in the WPT-1000 transmitter.
2. The first 8 dip switches are for the frequency setting (256 combinations) (figure 1).

Set the first 8 switches to match the 8 switches in the receiver.



3. Switches 9 & 10 are for the zone/channel setting on the transmitter. This will change the sound your receiver will make in the house (Figure 1). The four zones are as follows: (see table at right)

Switch 9	Switch 10	Channel	12-volt DC output	Tune
On	On	1	Yes	Classical
Off	On	2	No	Westminster
On	Off	3	No	Ding Dong
Off	Off	4	No	Whistle

### **Mounting the transmitter:**

1. The probe will detect vehicles up to about 3 metres away. If your driveway is one car wide, bury the probe parallel and right next to the drive (figure 2). If your driveway is two or more cars wide, bury the probe in the middle of the drive.
2. If the probe and wire will be in a high traffic area, it is best to bury both in conduit.
3. In order to protect the wire, it would also be best to have it in conduit where it is exposed above ground below the transmitter box.
4. Mount the transmitter box on a wooden post or a tree.
5. For best result the transmitter should be minimum 1.2 metres off the ground.

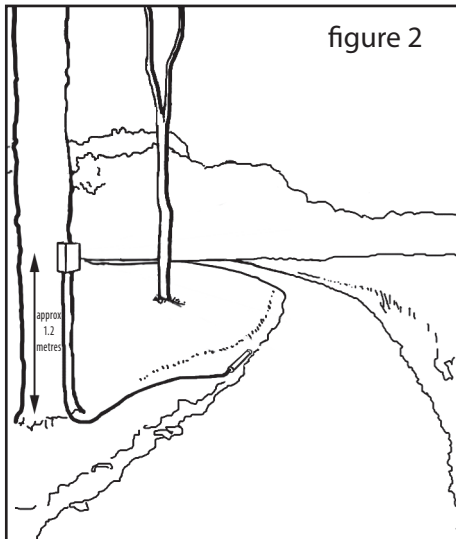


figure 2

### **Coding the receiver:**

1. Open the receiver case by inserting a small screw driver into one of the pry notches on the side of the case. (refer to receiver manual)
2. Gently lift off the front cover.
3. Locate the 8 dip switches on the receiver and make sure they set identically to the first 8 dip switches on the transmitter.  
Note: If more than one transmitter is used with the receiver, the first 8 dip switches of all transmitters must match the 8 dip switches of the receiver.

***NOTE: Whenever a change is made to the time jumper or the dip switches, the receiver must be turned "OFF" and then back "ON" to operate properly.***

Frequency: 433.92 MHz

Operating voltage: 12VDC

12 volt DC output current: 400 mA maximum

Relay output rating: 24VDC at 3 Amp

### **Troubleshooting the WPT-1000**

Although the WPT-1000 should be very reliable, there are occasions when you might have false alarms or a failure to alert. If you are getting false alarms, please try this:

- Make sure that the probe is at least 15 metres from any main roads.
- Turn the sensitivity (figure 1) down (counter-clockwise).
- Check the wire for damage to the insulation.

If the transmitter is not detecting, try one of these:

- Change the battery in the transmitter.
- Make sure the transmitter and receiver are coded alike.
- Turn the sensitivity (figure 1) up (clockwise).
- Move the transmitter closer to the receiver.
- Keep the transmitter away from large metal objects that may interfere with the radio signal.

## **TECHNICAL SUPPORT**

If you encounter any difficulty in the operation of this product after reading the manual, please contact us. You can reach Alarm Australia by phone on 1300-766-805. We will be happy to answer your questions and help you in any way we can.

## **WARRANTY**

Alarm Australia warrants this product to be free of defects in material and workmanship for a period of one year from the date of purchase. This warranty does not cover damage resulting from accident, abuse, act of God or improper operation.

If this product does become defective, contact Alarm Australia for advice on repair. Do not return unit.

## **HELPFUL TIPS & HINTS - PLEASE READ**

- **Change battery every 3 months regardless.**
- **Only alter dip switches in Transmitter & Receiver if you are experiencing false alarms as they come factory preset.**
- **Don't bury probe or permanently mount Transmitter or Receiver until you have successfully tested for a few days.**
- **When you have mounted transmitter permanently protect from direct elements with timber box or awning.**
- **Place a small moth ball in transmitter every 3 months.**
- **Receiver must be wall mounted not laying down.**

# **Alarm Australia**

**Phone:** 1300 766 805

**web:** [www.alarmaustralia.com.au](http://www.alarmaustralia.com.au)

**email:** [sales@alarmaustralia.com.au](mailto:sales@alarmaustralia.com.au)