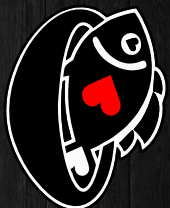




Poké Ichii

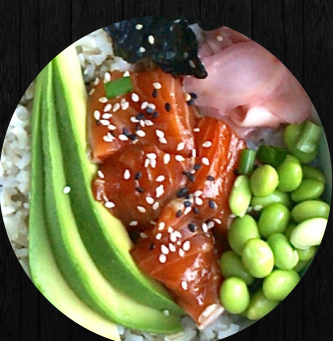


BUILD YOUR OWN BOWL



Step 1: Choose Your Size

- REGULAR BOWL (3 SCOOPS OF PROTEIN) \$13.50
- LARGE BOWL (5 SCOOPS OF PROTEIN) \$15.50
- ADDITIONAL SCOOP OF PROTEIN \$2.00



Step 2: Choose Your Base

- SUSHI RICE SOBA NOODLES WONTON CHIPS
- BROWN RICE HALF & HALF ORGANIC MIXED GREENS



Step 3: Choose Your Protein

- | | |
|----------------|----------------|
| ALBACORE* | AHI TUNA* |
| BBQ ALBACORE* | SPICY SALMON* |
| YELLOWTAIL* | SEARED SALMON* |
| SPICY TUNA* | TOFU |
| SEARED TUNA* | SALMON* |
| SPICY SCALLOP* | SHRIMP |
| OCTOPUS | CHICKEN |
| CLAM | |



Step 6: Choose Your Toppings

- | | | |
|---------------|-----------|------------------------|
| CRAB SALAD | MANGO | EDAMAME |
| SEAWEED SALAD | KIMCHI | SEAWEED STRIPS |
| FURIKAKE | BACON | PICKLED GINGER |
| CUCUMBER | CORN | SUNOMONO |
| PINEAPPLE | JALAPENOS | HABANERO MASAGO |
| DRIED ONION | WASABI | MACADAMIA (ADD \$1.00) |
| | MASAGO | AVOCADO (ADD \$1.00) |



Step 4: Choose Your Mix-In

- | | |
|-------------|--------------------------|
| GREEN ONION | WAKAME SEAWEED SALAD MIX |
| RED ONION | CILANTRO |



Step 5: Choose Your Sauce

- | | |
|--------------------|----------------------------|
| SPICY GARLIC SHOYU | CREAMY WHITE SAUCE |
| WASABI SHOYU | HOUSE SAUCE |
| SPICY MAYO | HABANERO SAUCE |
| SESAME PONZU | KIZAMI WASABI (ADD \$1.00) |
| TERIYAKI | CITRUS GREEN MISO SAUCE |



Poké Bake \$11.95 (CHOOSE SUSHI RICE OR BROWN RICE FOR THE BASE)

YOUR CHOICE OF SALMON, SCALLOP, OR CHICKEN MIX WITH:
Shrimp, crab salad, masago, green onion, spicy mayo & teriyaki sauce



Poké Nachos \$10.95 (SERVED ON TOP OF OUR CRISPY WONTON CHIPS)

YOUR CHOICE OF TWO PROTEINS MIX WITH:
Jalapenos, cilantro, red onions, green onions, & our special
POKE NACHO SAUCE. Topped off with masago, avocado & drizzle of spicy mayo.



Signature Bowls

EACH BOWL COMES WITH CHOICE OF BASE

1. IGHII BOMB BOWL * \$13.50

The base of your choice, spicy ahi tuna, spicy scallop, albacore tuna mixed with habanero sauce, jalapeno, cilantro, & green onion. Topped with seaweed salad, pineapple, masago, edamame, cucumber, & spicy mayo

2. KIZAMI BOWL * \$14.95

The base of your choice, salmon, ahi tuna, yellowtail hamachi, shrimp mixed with kizami wasabi & green onion, topped with seaweed salad, crab salad, masago, edamame, mango & cucumber

3. SHELLFISH BOWL * \$12.95

The base of your choice, spicy scallop, shrimp, clam, spicy garlic shoyu and house sauce, cilantro, green onion, topped with crab salad, seaweed salad, masago, bacon, corn & seaweed strips

4. TUNA LOVER BOWL * \$13.50

The base of your choice, spicy tuna, ahi tuna, seared tuna with the Sauce of spicy garlic shoyu & sesame ponzu, topping include green onion, cilantro, crab salad, seaweed salad, masago & macadamia nut

5. UNAGI BOWL \$15.50

Roasted BBQ eel over white or brown rice with teriyaki sauce topped with seaweed salad & green onion

6. BBQ ALBACORE BOWL * \$13.95

Torch seared Albacore Tuna with spicy mayo, corn, seaweed salad, sunomono, & green onion

7. VEGGIE BOWL \$9.95

Soft tofu, wakame seaweed salad mix, edamame, green onion, sunomono, mango, pineapple, teriyaki sauce & house sauce

8. KID'S BOWL \$6.95

Comes with your choice of one protein and three toppings



Extras

TAKOYAKI (4PC)	\$5.95 / (6PC)	\$7.95
MISO SOUP		\$2.50
TEMPURA SEAWEED CHIPS		\$3.50
SPAM MUSUBI (1)		\$3.50
SPAM MUSUBI (2)		\$6.00
MACARON ICE CREAM (1)		\$4.50
MACARON ICE CREAM (3)		\$12.00
SOFT DRINKS (CANNED)		\$2.50
SOFT DRINKS (BOTTLED)		\$3.00
BOTTLED WATER		\$2.00
COCONUT WATER		\$3.00

*Served raw or undercooked or contains raw or undercooked ingredients.

*Consuming raw or undercooked meats, poultry, seafood, shellfish or eggs may increase your risk of foodborne illness, especially if you have certain medical conditions.

