

## INSTANT DRUG SCREENING

Rapid tests for the detection of drugs  
and their metabolites in urine and saliva

*NHS Supply Chain Approved*

*Reliable, quick and over 99% accurate with results in less than 5 minutes*

*CE Approved*

*Dedicated client services' team, providing exceptional quality service*



**Beacon Business Healthcare Ltd**

The Old Post Office, High Street, West Meon, Hampshire, GU32 1LJ

T: +44 (0)800 012 2417 E: [info@beaconhealthcareltd.com](mailto:info@beaconhealthcareltd.com) [www.beaconhealthcareltd.com](http://www.beaconhealthcareltd.com)

**CONTENTS**

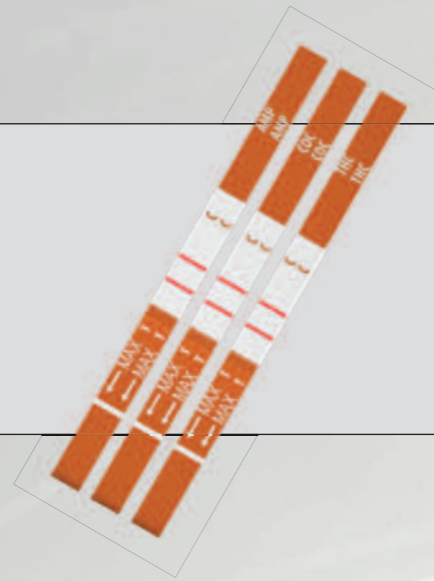
**Drug Screening Tests**

<b>Single-strip drug tests</b>	<b>2-3</b>
<b>MultiDip cassette tests</b>	<b>4-5</b>
<b>Single cassette tests</b>	<b>6-7</b>
<b>MultiLine cassette tests</b>	<b>8-7</b>
<b>Drug testing cups</b>	<b>10-11</b>
<b>Saliva tests</b>	<b>12-13</b>
<b>Order form</b>	<b>14</b>

## Single-strip Drug Tests

- NHS Supply Chain Approved
- Reliable in accordance with GC/MS
- CE Approved
- Dedicated client services' team, providing exceptional quality service

\* NHS clients can order direct from the NHS Supply Chain Portal



### Ordering information

Preference code	Product name	Cut-off	No. of tests per box	Non NHS price	Price per box
AMP-UI 1-001	Amphetamines Urine Test Strip	1000ng/ml	50 Strips	£0.45	£22.50
BAR-UI 1-001	Barbiturates Urine Test Strip	300ng/ml	50 Strips	£0.45	£22.50
BZO-UI 1-001	Benzodiazepines Urine Test Strip	300ng/ml	50 Strips	£0.70	£35.00
BUP-UI 1-001	Buprenorphine Urine Test Strip	10ng/ml	50 Strips	£0.70	£35.00
COC-UI 1-001	Cocaine Urine Test Strip	300ng/ml	50 Strips	£0.70	£35.00
COT-UI 1-001	Cotinine Urine Test Strip	200ng/ml	50 Strips	£1.00	£50.00
EDDP-UI 1-001	EDDP Urine Test Strip	100ng/ml	50 Strips	£0.70	£35.00
FYL-UI 1-001	Fentanyl Urine Test Strip	200ng/ml	50 Strips	£0.90	£45.00
KET-UI 1-001	Ketamine Urine Test Strip	1000ng/ml	50 Strips	£0.70	£35.00
MDMA-UI 1-001	MDMA Urine Test Strip	1000ng/ml	50 Strips	£0.70	£35.00
MET-UI 1-001	Methamphetamines Urine Test Strip	1000ng/ml	50 Strips	£0.70	£35.00
MOR-UI 1-001	Morphine Urine Test Strip	300ng/ml	50 Strips	£0.70	£35.00
MTD-UI 1-001	Methadone Urine Test Strip	300ng/ml	50 Strips	£0.70	£35.00
OPI-UI 1-001	Opiates Urine Test Strip	2000ng/ml	50 Strips	£0.70	£35.00
PCP-UI 1-001	Phencyclidine Urine Test Strip	25ng/ml	50 Strips	£0.70	£35.00
PPX-UI 1-001	Propoxyphene Urine Test Strip	300ng/ml	50 Strips	£0.70	£35.00
TCA-UI 1-001	Tricyclic Antidepressant Urine Test Strip	1000ng/ml	50 Strips	£0.70	£35.00
THC-UI 1-001	Cannabis Urine Test Strip	50ng/ml	50 Strips	£0.70	£35.00
TML-UI 1-001	Tramadol Urine Test Strip	100ng/ml	50 Strips	£0.91	£45.50

## Single-strip Drug Tests

Beacon is a leading healthcare company providing drug and alcohol programmes, therapy and care services and training and development courses. Our extensive range of competitively priced rapid testing products are very reliable and accurate.

We are confident that our high quality product prices cannot be matched anywhere in the UK.

NHS clients: Please either contact our client services team or order directly through the NHS Supply Chain Portal for tender pricing.

Please feel free to request special parameters that might not be listed.

### Detection Window for Drugs

Sample material	Detection window*
Invisible traces (Surfaces)	Up to years
Blood	< 1 hour - 24 hours
Urine	1 hour - several days
Saliva	< 1 hour - several days
Sweat	< 1 hour - 24 hours

\* Please note that the above table represents approximate indicators only. All expected detection times depend on the analyte, including: metabolic process (blood/saliva/sweat/urine), exposure to chemical, biological or physical stress (invisible traces/surfaces) and food/drink consumption (urine).

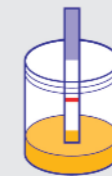
### Test Procedure:

#### 1 To prepare you will need:

- Test strips
- Urine cup with sample
- Gloves



2 Dip the test strips into the urine sample for **15-30 seconds**, until the test zone is dyed a consistent pale yellow. Make sure that the urine level does not exceed the horizontal red line.



3 Lay the test strip on a clean and even surface.

4 Read the results after **1-5 minutes**. Do not evaluate results after 10 minutes, as they are no longer valid.



### Evaluation of Results:

#### Negative:

A negative result is valid only when BOTH the test (T) and the control (C) lines are visible. It does not matter how faint or strong the lines appear.



#### Positive:

A positive result is valid when only the control line (C) is visible.



#### Invalid:

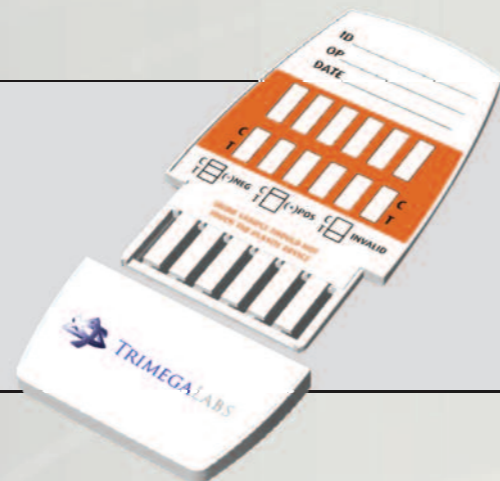
The test is invalid when no control lines (C) are visible, or when only the test line (T) is showing.



**MultiDip Cassette Tests**

- NHS Supply Chain Approved
- Reliable in accordance with GC/MS
- CE Approved
- Dedicated client services' team, providing exceptional quality service

\* NHS clients can order direct from the NHS Supply Chain Portal



The Beacon Healthcare's MultiDip drug test for urine is the industry standard for professionals worldwide for multiple drug combinations. Simply remove the cap and dip into urine.

**COMPETITIVE PRICING**

Beacon healthcare' prices are so competitive that the two products in this range will cover all your testing requirements at a lower cost.

**Ordering information**

Reference code	Product name	Parameters	No. of tests per box	Non NHS price	Price per box
MD-U510-002	10-Drug Urine Test Panel	AMP1000/BAR300/BZO300/ COC300/MDMA1000/MET1000/ MTD300/MOR300/BUPI0/THC50	25 devices	£3.36	£84.00
MD-U56-002	6-Drug Urine Test Panel	AMP1000/BZO300/COC300/ MTD300/MOR300/BUPI0	25 devices	£1.75	£43.75

**MultiDip Cassette Tests**

Beacon is a leading healthcare company providing drug and alcohol programmes, therapy and care services and training and development courses. Our extensive range of competitively priced rapid testing products are very reliable and accurate.

We are confident that our high quality product prices cannot be matched anywhere in the UK.

NHS clients: Please either contact our client services team or order directly through the NHS Supply Chain Portal for tender pricing.

Please feel free to request special parameters that might not be listed.

**Detection Window for Drugs**

Sample material	Detection window*
Invisible traces (Surfaces)	Up to years
Blood	< 1 hour - 24 hours
Urine	1 hour - several days
Saliva	< 1 hour - several days
Sweat	< 1 hour - 24 hours

\* Please note that the above table represents approximate indicators only. All expected detection times depend on the analyte, including: metabolic process (blood/saliva/sweat/urine), exposure to chemical, biological or physical stress (invisible traces/surfaces) and food/drink consumption (urine).

**Test Procedure:**

**1 To prepare you will need:**

- MultiDip cassette
- Urine cup with sample
- Gloves



**2** Remove the cap and dip the test strips into the urine sample for **15-30 seconds**, until the test zone is dyed a consistent pale yellow. Make sure that the urine level does not touch plastic device.



**3** Lay the test strip on a clean and even surface.

**4** Read the results after **1-5 minutes**. Do not evaluate results after 10 minutes, as they are no longer valid.



**Evaluation of Results:**

**Negative:**

A negative result is valid only when BOTH the test (T) and the control (C) lines are visible. It does not matter how faint or strong the lines appear.



**Positive:**

A positive result is valid when only the control line (C) is visible.



**Invalid:**

The test is invalid when no control lines (C) are visible, or when only the test line (T) is showing.



## Single Cassette Tests

- NHS Supply Chain Approved
- Reliable in accordance with GC/MS
- CE Approved
- Dedicated client services' team, providing exceptional quality service

\* NHS clients can order direct from the NHS Supply Chain Portal



The Beacon Healthcare's single drug urine test cassettes have all the features of a test strip with the added benefit of a sample well and pipette transfer.

### Ordering information

Reference code	Product name	Cut-off	No. of tests per box	Non NHS price	Price per box
AMP-U23-001	Amphetamines Urine Test Cassette	1000ng/ml	40 devices	£0.61	£24.40
BAR-U23-001	Barbiturates Urine Test Cassette	300ng/ml	40 devices	£0.74	£29.60
BUP-U23-001	Buprenorphine Urine Test Cassette	10ng/ml	40 devices	£0.88	£35.20
BZO-U23-001	Benzodiazepines Urine Test Cassette	300ng/ml	40 devices	£0.88	£35.20
COC-U23-001	Cocaine Urine Test Cassette	300ng/ml	40 devices	£0.88	£35.20
COT-U23-001	Cotinine Urine Test Cassette	200ng/ml	40 devices	£1.30	£52.00
KET-U23-001	Ketamine Urine Test Cassette	1000ng/ml	40 devices	£0.88	£35.20
MDMA-U23-001	MDMA Urine Test Cassette	1000ng/ml	40 devices	£0.88	£35.20
MET-U23-001	Methamphetamines Urine Test Cassette	1000ng/ml	40 devices	£0.88	£35.20
MOR-U23-001	Morphine Urine Test Cassette	300ng/ml	40 devices	£0.88	£35.20
MTD-U23-001	Methadone Urine Test Cassette	300ng/ml	40 devices	£0.88	£35.20
OPI-U23-001	Opiates Urine Test Cassette	2000ng/ml	40 devices	£0.88	£35.20
PCP-U23-001	Phencyclidine Urine Test Cassette	25ng/ml	40 devices	£0.88	£35.20
PPX-U23-001	Propoxyphene Urine Test Cassette	300ng/ml	40 devices	£0.88	£35.20
TCA-U23-001	Tricyclic Antidepressant Urine Test Cassette	1000ng/ml	40 devices	£0.88	£35.20
THC-U23-001	Cannabis Urine Test Cassette	50ng/ml	40 devices	£0.88	£35.20
TML-U23-001	Tramadol Urine Test Cassette	100ng/ml	40 devices	£1.19	£47.60

## Single Cassette Tests

Beacon is a leading healthcare company providing drug and alcohol programmes, therapy and care services and training and development courses. Our extensive range of competitively priced rapid testing products are very reliable and accurate.

We are confident that our high quality product prices cannot be matched anywhere in the UK.

NHS clients: Please either contact our client services team or order directly through the NHS Supply Chain Portal for tender pricing.

Please feel free to request special parameters that might not be listed.

### Detection Window for Drugs

Sample material	Detection window*
Invisible traces (Surfaces)	Up to years
Blood	< 1 hour - 24 hours
Urine	1 hour - several days
Saliva	< 1 hour - several days
Sweat	< 1 hour - 24 hours

\* Please note that the above table represents approximate indicators only. All expected detection times depend on the analyte, including: metabolic process (blood/saliva/sweat/urine), exposure to chemical, biological or physical stress (invisible traces/surfaces) and food/drink consumption (urine).

### Test Procedure:

The test should be performed immediately after opening the protective pouch, because the test is humidity-sensitive. Refrigerated cassettes, controls and any refrigerated patients' samples should be brought to room temperature (15-30°C) before opening and prior to testing to avoid condensation of moisture on the test. Ensure that a sufficient quantity of specimen has been collected.

- 1 Open the pouch and remove the cassette. Once opened, the cassette must be used immediately.
- 2 Draw the urine sample to the line marked on the pipette.
- 3 Dispense 3 drops into the sample well. Use a separate pipette and device for each sample or control. Start the timer. Caution: If the urine directly touches the reaction zone, the test becomes invalid!
- 4 Read the results at the end of 5 minutes. Do not interpret the result later than 15 minutes after starting the assay.



### Evaluation of Results:

#### Negative:

Both control (C) and test (T) lines appear. The test line (T) is the drug line; the line at (C) is the control line, which is used to indicate proper performance of the strip. The colour intensity of the test line may be weaker or stronger than that of the control line.



#### Positive:

Only the control line (C) appears. The absence of the test line (T) indicates a positive result. Keep the sample if confirmation testing is required.



Note: A very faint line in the test zone indicates that the drug in the sample is near the cut-off level of the test. These samples should be re-tested or confirmed with a more specific method before a positive determination is made.

#### Invalid:

No line appears in the control zone (C). Under no circumstances should a positive sample be identified until the control line forms. Repeat the assay with a new test device, paying special attention to the required amount of liquid and reaction time. If problems persist, please contact our client services team.



**MultiLine Cassette Tests**

- NHS Supply Chain Approved
- Reliable in accordance with GC/MS
- CE Approved
- Dedicated client services' team, providing exceptional quality service

\* NHS clients can order direct from the NHS Supply Chain Portal



**COMPETITIVE PRICING**

Beacon Healthcare's prices are so competitive that the two products in this range will cover all your testing requirements at a lower cost.

**Ordering information**

Reference code	Product name	Parameters	No. of tests per box	Non NHS price	Price per box
MD-U410-002	10-Drug Urine Test Cassette	AMPI000/BAR300/BZO300/COC300/MDMA1000/MET1000/MTD300/MOR300/BUPI0/THC50	25 devices	£5.00	£125.00
MD-U46-002	6-Drug Urine Test Cassette	AMPI000/BZO300/COC300/MTD300/MOR300/BUPI0	25 devices	£2.70	£67.50
MD-U43-002	3-Drug Urine Test Cassette	COC300/MOR300/AMPI000	25 devices	£1.80	£45.00

Beacon is a leading healthcare company providing drug and alcohol programmes, therapy and care services and training and development courses. Our extensive range of competitively priced rapid testing products are very reliable and accurate.

We are confident that our high quality product prices cannot be matched anywhere in the UK.

NHS clients: Please either contact our client services team or order directly through the NHS Supply Chain Portal for tender pricing.

Please feel free to request special parameters that might not be listed.

**Detection Window for Drugs**

Sample material	Detection window*
Invisible traces (Surfaces)	Up to years
Blood	< 1 hour - 24 hours
Urine	1 hour - several days
Saliva	< 1 hour - several days
Sweat	< 1 hour - 24 hours

\* Please note that the above table represents approximate indicators only. All expected detection times depend on the analyte, including: metabolic process (blood/saliva/sweat/urine), exposure to chemical, biological or physical stress (invisible traces/surfaces) and food/drink consumption (urine).

**Multiline Cassette Tests**

**Test Procedure:**

Test device, patient's samples, and controls should be brought to room temperature (15-30°C) prior to testing to avoid condensation of moisture on the membrane. Do not open pouches until ready to perform the assay.

1 Remove the test device from its protective pouch. Label the device with patient or control identification information.

2 Dispense 3 to 4 drops into each sample well. Be aware that no urine comes into direct contact with the reaction zone, as this will invalidate the test.



Figure A

Figure A shows a cassette with two strips (reaction zone) and two sample wells.

3 Read results after 5 minutes, when the control line has appeared at the reaction zone of each strip. The control line should appear after 5 minutes at the latest.

4 Do not read results after 15 minutes.

**Evaluation of Results:**

**Negative:**

If you have analysed a drug-free sample for each drug, a test line together with the control line (C) appears at each reaction zone. The line in each test region (1, 2 & 3) is the drug probe line; the line in the control region (C) is the control line, which is used to indicate proper performance of the device. The colour intensity of the test line may be weaker or stronger than that of the control line.

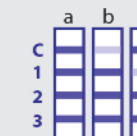


Figure B

Figure B illustrates negative results for all drugs tested, as both control and test lines (1, 2 & 3) are visible in each reaction zone. This is irrespective of how faint the lines appear.

Important note:  
Do not quantify the intensity of the test lines.

**Positive:**

Only the control line (C) is visible and the test lines (1, 2 & 3) are invisible. Figure D below shows that the reaction zone "a" is positive for the drugs "1", "2" and "3".

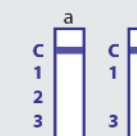


Figure D

Some reaction zones may not have all test lines available for testing. Figure D shows in reaction zone "b" the testing of drugs "1" and "3", obtaining positive results.

Each test line should be evaluated separately. That means, not all parameters will be positive at the same time in one test. An invisible test line indicates a positive result for the corresponding drug only. The control line must be visible in all cases.

Mark the positive results after evaluation time (after approx. 5 minutes).

A very faint line in the test region indicates that the respective drug in the sample is near the cut-off level of the test. These samples should be re-tested or confirmed with a more specific method (e.g. GC/MS) before a positive determination is made.

**Invalid:**

If no line appears in the control region (C) after approx. 5 minutes, the test or rather the respective parameters are invalid and the test should be repeated. Important: the test must not be evaluated if the control line is absent!



Figure E

Figure E illustrates invalid results for the drugs "1", "2" and "3", because no control line (C) in this reaction zone is visible.

- NHS Supply Chain Approved
- Reliable in accordance with GC/MS
- CE Approved
- Dedicated client services' team, providing exceptional quality service

\* NHS clients can order direct from the NHS Supply Chain Portal



The Beacon Healthcare's OptiCup is the most ergonomic test available. The sealed chamber allows the operator to, at all times, minimise leakage from the sample. The OptiCup enables the collection of enough sample to allow for Trimega Laboratories' GC/MS confirmation services if required.

**COMPETITIVE PRICING**

Beacon Healthcare's prices are so competitive that the two products in this range will cover all your testing requirements at a lower cost.

**Ordering information**

Reference code	Product name	Parameters	No. of tests per box	Non NHS price	Price per box
MD-U610-002	Integrated 10-Drug Urine Drug Test Cup	AMP1000/BAR300/BZO300/COC300/MDMA1000/MET1000/MTD300/MOR300/BUP10/THC50	40 devices	£5.97	£238.80
MD-U67-001	Integrated 7-Drug Urine Drug Test Cup	AMP1000/BZO300/COC300/MTD300/MOR300/BUP10/THC50	40 devices	£4.94	£197.60

Trimega Laboratories established its core business and reputation in the UK legal sector. The company has a strong ethos to the fact that much of this work is paid from the public purse. It is with this very ethos that competitive prices are offered as part of its rapid testing pricing strategy.

We are confident that our high quality product prices cannot be matched anywhere in the UK.

NHS clients: Please either contact our client services team or order directly through the NHS Supply Chain Portal for tender pricing.

Please feel free to request special parameters that might not be listed.

**Detection Window for Drugs**

Sample material	Detection window*
Invisible traces (Surfaces)	Up to years
Blood	< 1 hour - 24 hours
Urine	1 hour - several days
Saliva	< 1 hour - several days
Sweat	< 1 hour - 24 hours

\* Please note that the above table represents approximate indicators only. All expected detection times depend on the analyte, including: metabolic process (blood/saliva/sweat/urine), exposure to chemical, biological or physical stress (invisible traces/surfaces) and food/drink consumption (urine).

**Test Procedure:**

1 Take an OptiCup and open the sealed pouch. Once opened, the device should be used as soon as possible.

2 Give the patient the opened OptiCup (without the lid) for the collection of urine.



3 Ensure that the lid and the cup has been combined tightly and start the timer. Closing the lid will generate an overpressure and start the assay. The overpressure pushes the urine sample through a capillary system to the test strips.



4 Read the temperature at the backside of the drug cup between 2-4 minutes.

5 Label the security seal with name of the patient or reference number and stick to the lid cross-wise. The seal should touch the body of the cup from end to end, preventing unauthorised access to maintain chain of custody.



6 Remove the peel-off label covering the test results.



7 Read the result for pH and Creatinine between 3-5 minutes using the enclosed colour chart. Hold the colour chart at the OptiCup and read the results.



8 Read results from 5-10 minutes. Do not read results after 15 minutes.

**Evaluation of Results:**

**Negative:**  
A negative result is valid only when BOTH the test (T) and the control (C) lines are visible. It does not matter how faint or strong the lines appear.



**Positive:**  
A positive result is valid when only the control line (C) is visible.



**Invalid:**  
The test is invalid when no control lines (C) are visible, or when only the test line (T) is showing.



- NHS Supply Chain Approved
- Reliable in accordance with GC/MS
- CE Approved
- Dedicated client services' team, providing exceptional quality service

\* NHS clients can order direct from the NHS Supply Chain Portal



The Beacon Healthcare's Saliva Test for drugs of abuse is easy-to-use and one of the most accurate available in the UK market. The Saliva Test is ideal for testing 'fit for purpose' drug usage. Sold in boxes of 25.

**Ordering information**

Reference code	Product name	Parameters	No. of tests per box	Non NHS price	Price per box
MD-S46-001	6-Drug Saliva Test	AMP50, COC20, MET50, MOR40, PCP10, THC12	25 devices	£4.90	£122.50

**Cut-off Levels (Saliva)**

Reference	Parameters	Active substance	Cut-off
Amphetamines	AMP	d-Amphetamine	50 ng/ml
		MDA	150 ng/ml
Cannabis	THC	delta-9-THC	100 ng/ml
		11-nor-delta9-THC-9COOH	12 ng/ml
Cocaine	COC	Cocaine	20 ng/ml
		Benzoylcegonine	20 ng/ml
Methamphetamines	MET	d-Methamphetamine	50 ng/ml
Morphine/Opiates	OPI	MDMA	50 ng/ml
		Heroin	50 ng/ml
		Morphine	40 ng/ml
Phencyclidine	PCP	6-Monoacetyl morphine	25 ng/ml
		Phencyclidine	10 ng/ml

Beacon is a leading healthcare company providing drug and alcohol programmes, therapy and care services and training and development courses. Our extensive range of competitively priced rapid testing products are very reliable and accurate.

We are confident that our high quality product prices cannot be matched anywhere in the UK.

NHS clients: Please either contact our client services team or order directly through the NHS Supply Chain Portal for tender pricing.

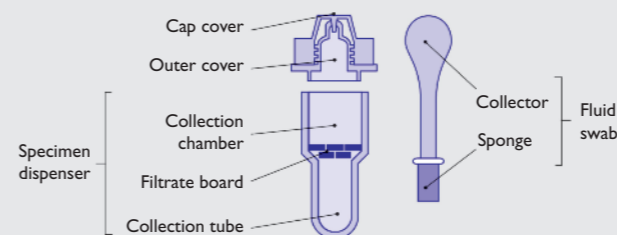
Please feel free to request special parameters that might not be listed.

**Detection Window for Drugs**

Sample material	Detection window*
Invisible traces (Surfaces)	Up to years
Blood	< 1 hour - 24 hours
Urine	1 hour - several days
Saliva	< 1 hour - several days
Sweat	< 1 hour - 24 hours

\* Please note that the above table represents approximate indicators only. All expected detection times depend on the analyte, including: metabolic process (blood/saliva/sweat/urine), exposure to chemical, biological or physical stress (invisible traces/surfaces) and food/drink consumption (urine).

**Test Procedure:**



- Using the provided oral fluid swab, sweep the inside of the mouth for 3 minutes. The sponge will gradually soften as oral fluid is absorbed, and should be completely soft after 3 minutes.
- Take the moistened swab and push it firmly into the specimen dispenser. Push the collector into the collection chamber and press down firmly to release as much liquid as possible.
- Take out the swab from the specimen dispenser and using the cap, seal the dispenser shut.
- Remove the test from its sealed pouch, and place it on a clean, level surface. Label the test with patient or control identification. For best results, the assay should be performed within one hour.
- Unscrew the cap cover (not the outer cap), and transfer 3-4 drops of fluid to each specimen well of the device and start the timer. Avoid trapping air bubbles in the specimen wells, and do not add any solution to the result areas. As the test begins to work, colour will migrate across the reaction zones.
- The results should be read at 10 minutes. Do not interpret the results after 20 minutes.

**Evaluation of Results:**

**Negative:**  
If you have analysed a drug-free sample, a test line together with the control line (C) appears at each reaction zone. The line in each test region (1, 2 & 3) is the drug probe line; the line in the control region (C) is the control line, which is used to indicate proper performance of the device. The colour intensity of the test line may be weaker or stronger than that of the control line.

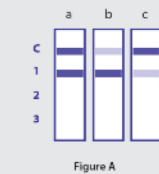
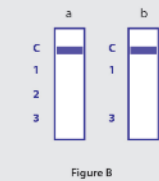


Figure A illustrates negative results for the drugs "1", as both control (C) and test lines (1) are visible in each reaction zone. This is irrespective of how faint the lines appear.  
Important note:

Do not quantify the intensity of the test lines.

**Positive:**  
Only the control line (C) is visible and the test lines (1, 2 & 3) are invisible. Figure B shows that the reaction zone "a" is positive for the drugs "1", "2" and "3".



Some reaction zones may not have all test lines available for testing. Figure B shows in reaction zone "b" the testing of drugs "1" and "3", obtaining positive results.

Each test line should be evaluated separately. That means, not all parameters will be positive at the same time in one test. An invisible test line indicates a positive result for the corresponding drug only. The control lines must be visible in all cases.

Mark the positive results after evaluation time (after approx. 10 minutes).

**Invalid:**  
If no line appears in the control region (C) after approx. 10 minutes, the test or rather the respective parameters are invalid and the test should be repeated. The test must not be evaluated if the control line is absent.

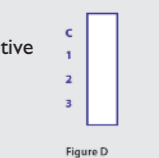


Figure D shows invalid results for the drugs "1", "2" and "3", because no control line is visible.



## Drug and Alcohol Testing

### Request for Quotation Form

NOTE: NHS can order through the Supply Chain Portal to qualify for tender pricing.

Order originator:	Order delivery:	Invoice address:
Name:	Name:	Name:
Organisation:	Organisation:	Organisation:
Address:	Address:	Address:
Tel:	Tel:	Tel:
Fax:	Fax:	Fax:
Email:	Email:	Email:
Automatic email updates can be generated by email to you. Would you like to receive these emails? Yes No		

Single strips	Sold in boxes of 50	Quantity
AMP-U11-001	Amphetamines Urine Test Strip	
BAR-U11-001	Barbiturates Urine Test Strip	
BUP-U11-001	Buprenorphine Urine Test Strip	
BZO-U11-001	Benzodiazepines Urine Test Strip	
COC-U11-001	Cocaine Urine Test Strip	
COT-U11-001	Cotinine Urine Test Strip	
EDDP-U11-001	EDDP Urine Test Strip	
FYL-U11-001	Fentanyl Urine Test Strip	
KET-U11-001	Ketamine Urine Test Strip	
MDMA-U11-001	MDMA Urine Test Strip	
MET-U11-001	Methamphetamines Urine Test Strip	
MOR-U11-001	Morphine Urine Test Strip	
MTD-U11-001	Methadone Urine Test Strip	
OPI-U11-001	Opiates Urine Test Strip	
PCP-U11-001	Phencyclidine Urine Test Strip	
PPX-U11-001	Propoxyphene Urine Test Strip	
TCA-U11-001	Tricyclic Antidepressant Urine Test Strip	
THC-U11-001	Cannabis Urine Test Strip	
TML-U11-001	Tramadol Urine Test Strip	

Single Cassette	Sold in boxes of 40	Quantity
AMP-U23-001	Amphetamines Urine Test Cassette	
BAR-U23-001	Barbiturates Urine Test Cassette	
BUP-U23-001	Buprenorphine Urine Test Cassette	
BZO-U23-001	Benzodiazepines Urine Test Cassette	
COC-U23-001	Cocaine Urine Test Cassette	
COT-U23-001	Cotinine Urine Test Cassette	
KET-U23-001	Ketamine Urine Test Cassette	
MDMA-U23-001	MDMA Urine Test Cassette	
MET-U23-001	Methamphetamines Urine Test Cassette	
MOR-U23-001	Morphine Urine Test Cassette	
MTD-U23-001	Methadone Urine Test Cassette	
OPI-U23-001	Opiates Urine Test Cassette	
PCP-U23-001	Phencyclidine Urine Test Cassette	
PPX-U23-001	Propoxyphene Urine Test Cassette	
TCA-U23-001	Tricyclic Antidepressant Urine Test Cassette	
THC-U23-001	Cannabis Urine Test Cassette	
TML-U23-001	Tramadol Urine Test Cassette	

MultiLine Cassettes	Sold in boxes of 25	Quantity
MD-U410-002	10-Drug Urine Test Cassette	AMP1000/BAR300/BZO300/COC300/MDMA1000/MET1000/MTD300/MOR300/ BUP10/THC50
MD-U46-002	6-Drug Urine Test Cassette	AMP1000/BZO300/COC300/MTD300/MOR300/BUP10
MD-U43-002	3-Drug Urine Test Cassette	COC300/MOR300/AMP1000

MultiDips	Sold in boxes of 25	Quantity
MD-US10-002	10-Drug Urine Test Panel	AMP1000/BAR300/BZO300/COC300/MDMA1000/MET1000/MTD300/MOR300/ BUP10/THC50
MD-US6-002	6-Drug Urine Test Panel	AMP1000/BZO300/COC300/MTD300/MOR300/BUP10

OptiCups	Sold in boxes of 40	Quantity
MD-U610-002	Integrated 10-Drug Urine Drug Test Cup	AMP1000/BAR300/BZO300/COC300/MDMA1000/MET1000/MTD300/MOR300/ BUP10/THC50
MD-U67-001	Integrated 7-Drug Urine Drug Test Cup	AMP1000/BZO300/COC300/MTD300/MOR300/BUP10/THC50

Saliva Tests	Sold in boxes of 25	Quantity
MD-S46-001	6-Drug Saliva Test	AMP50, COC20, MET50, MOR40, PCP10, THC12

Please note that upon sending the form back to Beacon Healthcare Laboratories, a quotation will be prepared and forwarded to the contact details provided above.