

MODULI

ROTANTI

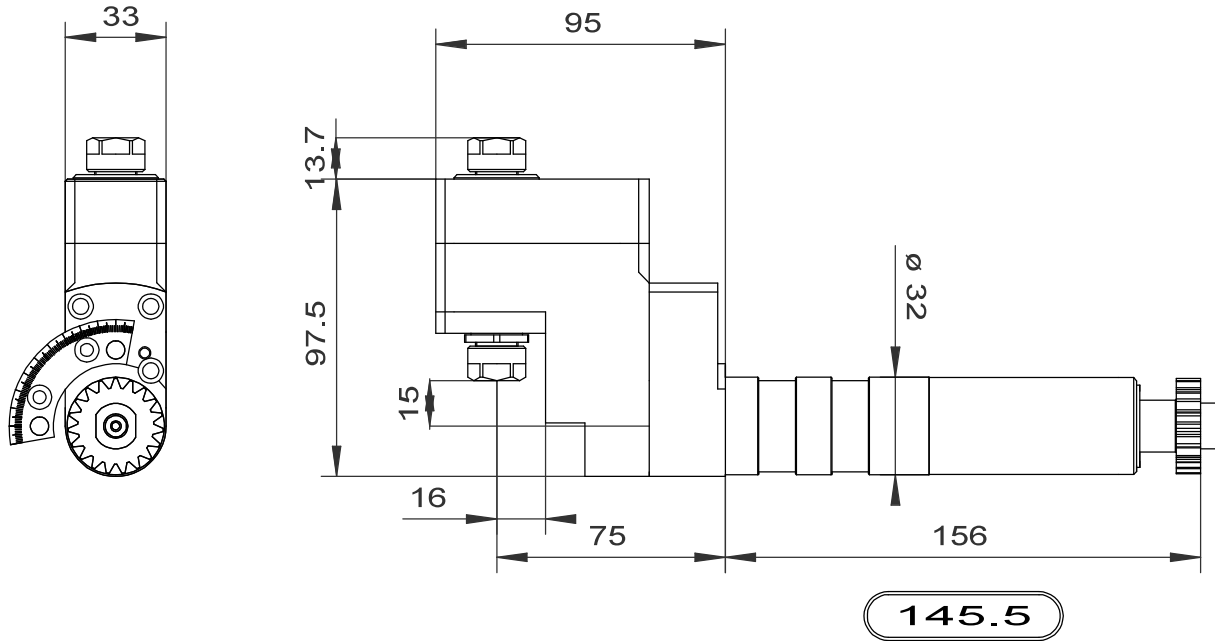
ORIENTABILI

PIASTRA

PRINCIPALE

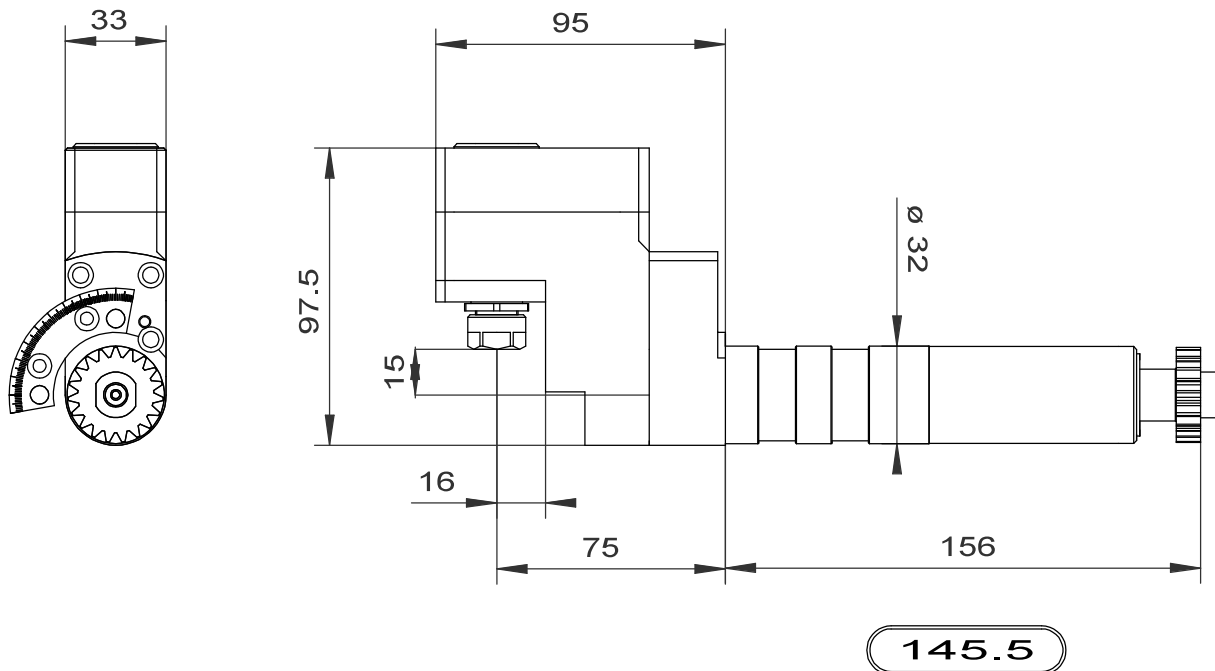
COD. 001-500-CZ

MODULO ROTANTE ORIENTABILE
DOPPIO PORTA PINZA ER11
RPM MAX 6000 RP=1:1



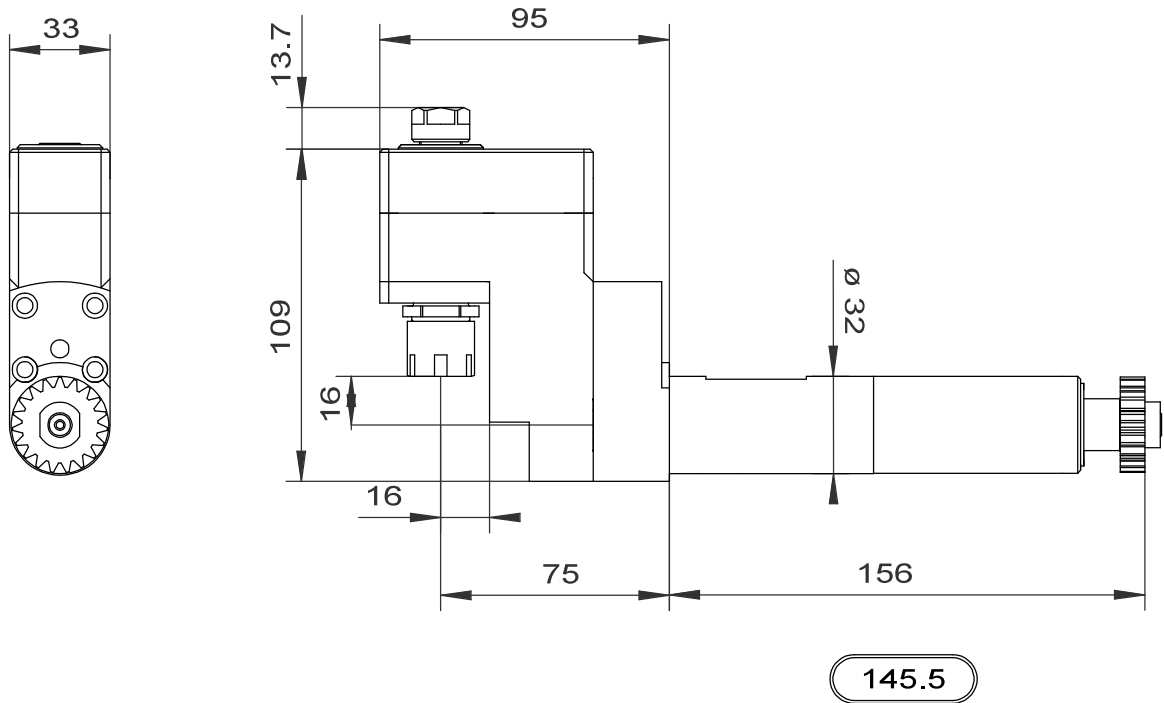
COD. 003-500-CZ

MODULO ROTANTE ORIENTABILE
PORTA PINZA ER11
RPM MAX 6000 RP=1:1



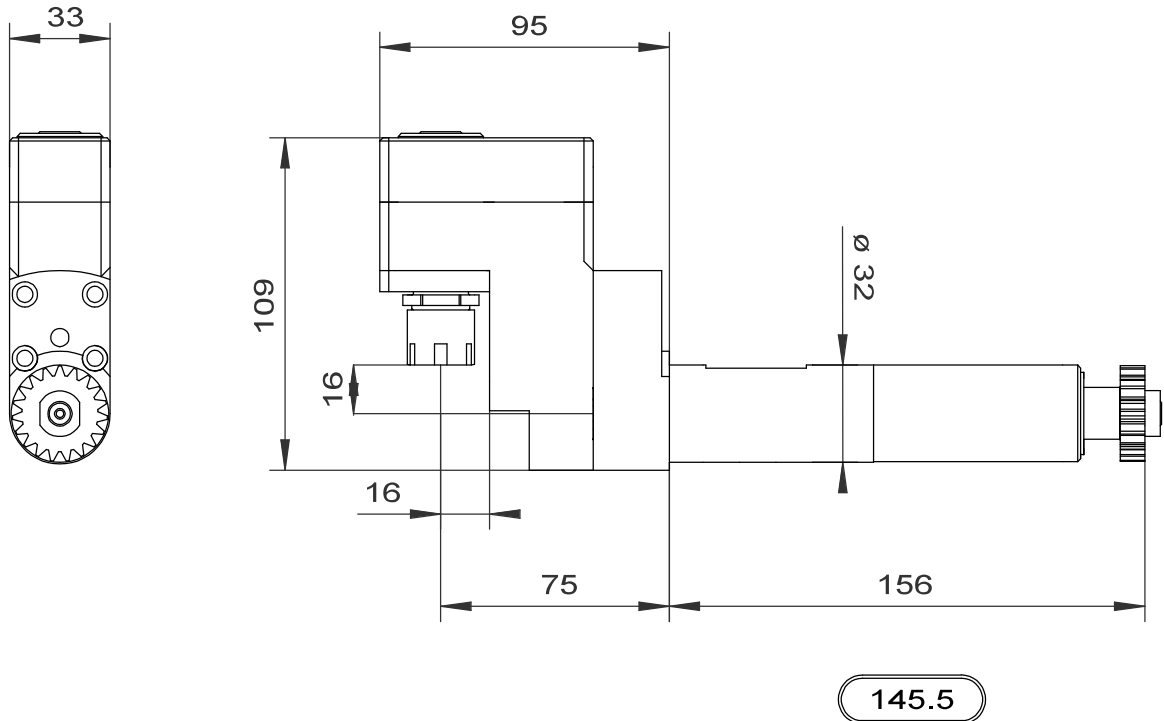
COD. 004-500-CZ

MODULO ROTANTE ORIENTABILE
DOPPIO PORTA PINZA
ER16 ANTERIORE - ER11 POSTERIORE
RPM MAX 6000 RP=1:1



COD. 002-500-CZ

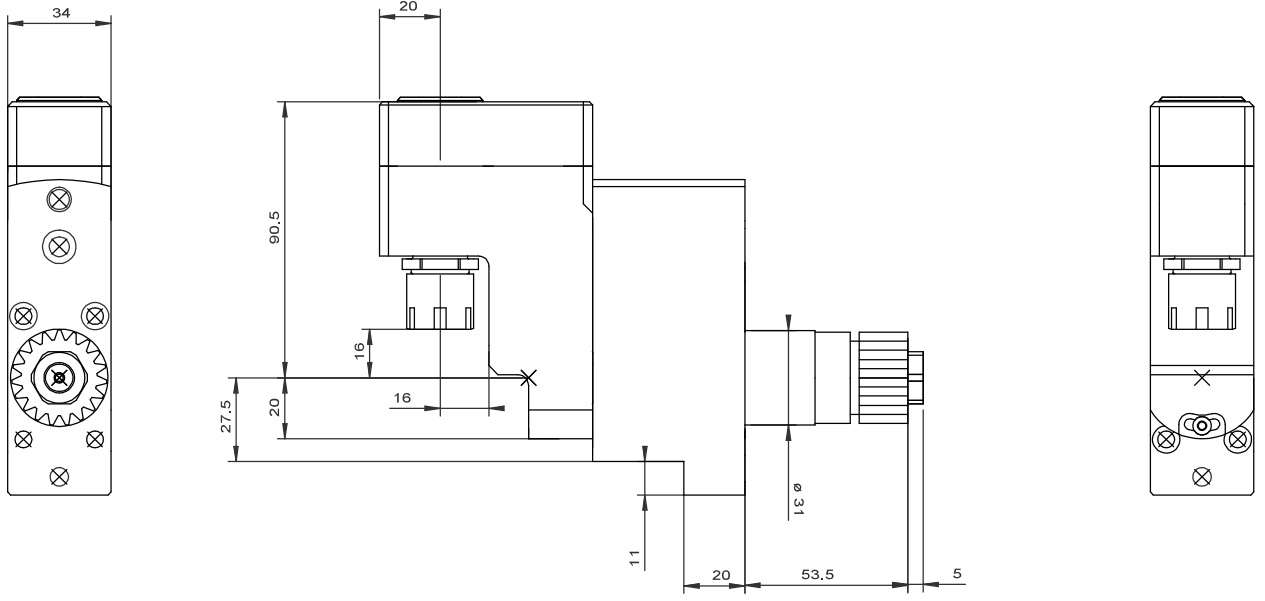
MODULO ROTANTE ORIENTABILE
PORTA PINZA ER16
RPM MAX 6000 RP=1:1



COD. 005-500-CZ

MODULO ROTANTE PORTA PINZE ER 16

GIRI MAX 6000 RP=1/1



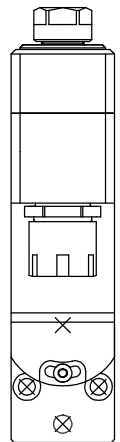
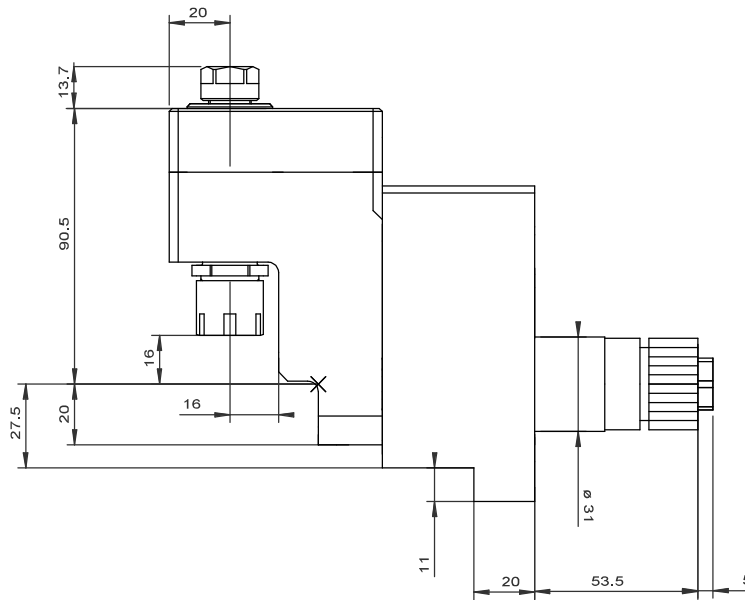
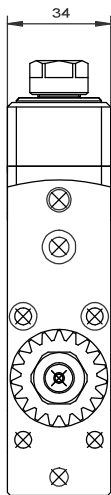
COD. 006-500-CZ

MODULO ROTANTE ORIENTABILE DOPPIO

+15°-15°

GIRI MAX 6000 RP=1/1

PORTA PINZA ANTERIORE ER16 POSTERIORE ER11



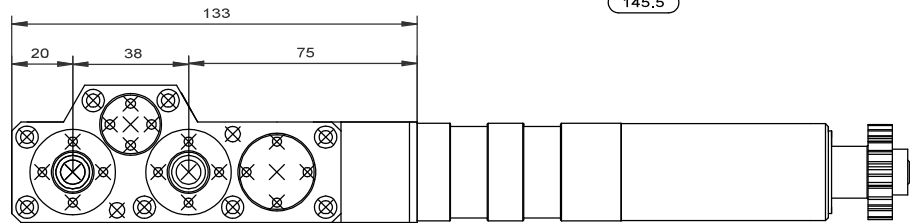
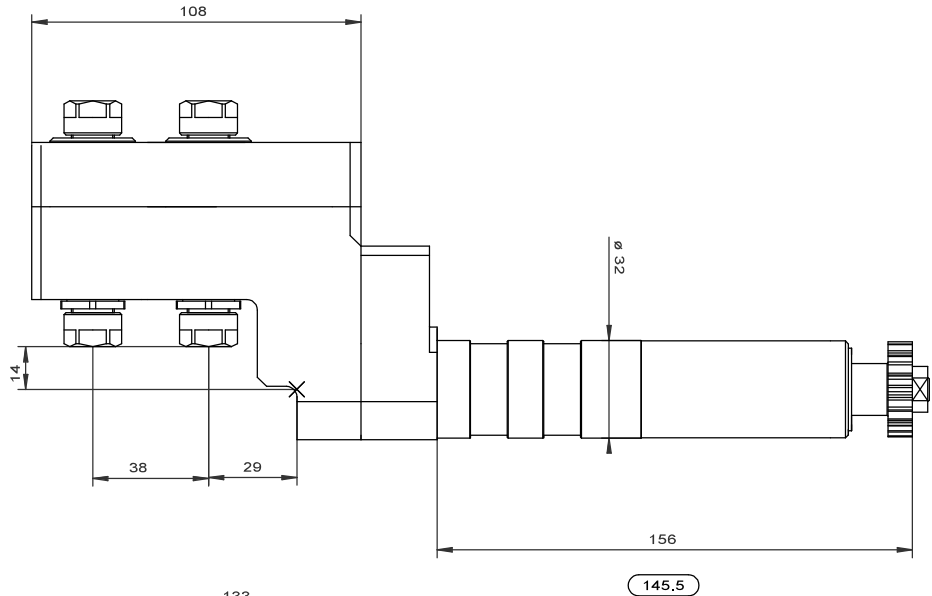
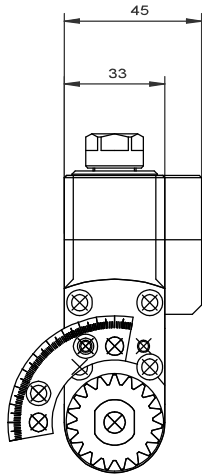
COD. 007-500-CZ

MODULO ROTANTE 4 USCITE

GIRI MAX 6000 RP=1/1

PORTA PINZA ER11

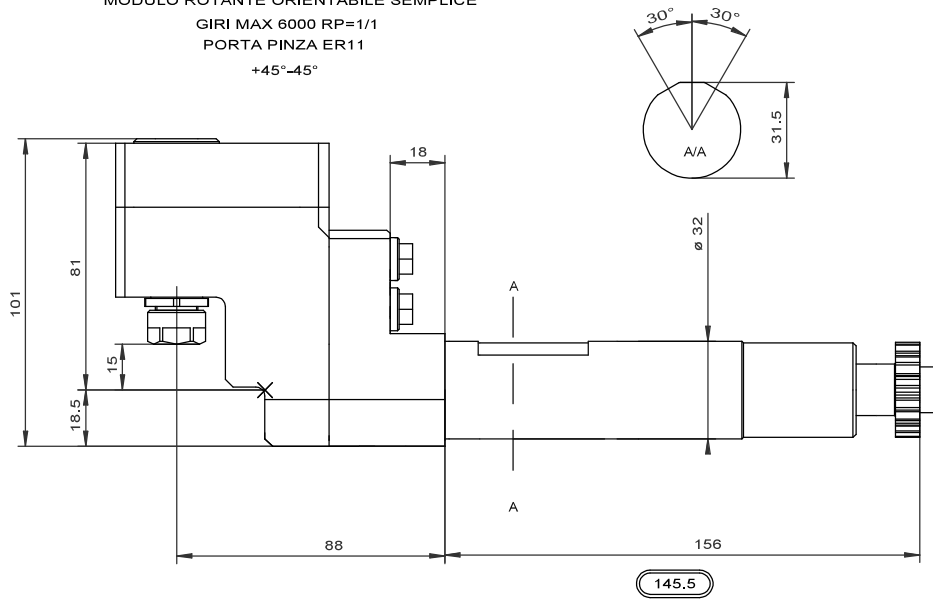
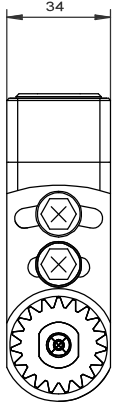
ROTAZIONE MANDRINI STESSO SENSO



145.5

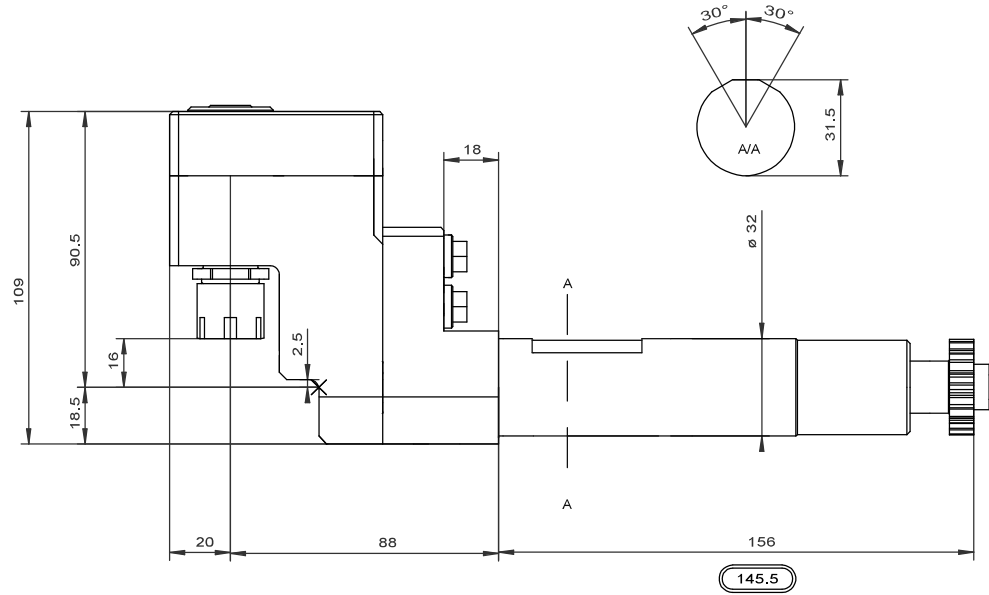
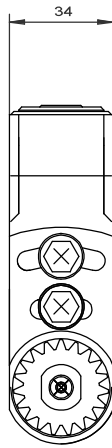
COD.008-500-CZ

MODULO ROTANTE ORIENTABILE SEMPLICE
GIRI MAX 6000 RP=1/1
PORTA PINZA ER11
+45°-45°



COD.009-500-CZ

MODULO ROTANTE ORIENTABILE SEMPLICE
GIRI MAX 6000 RP=1/1
PORTA PINZA ER16
+45°-45°

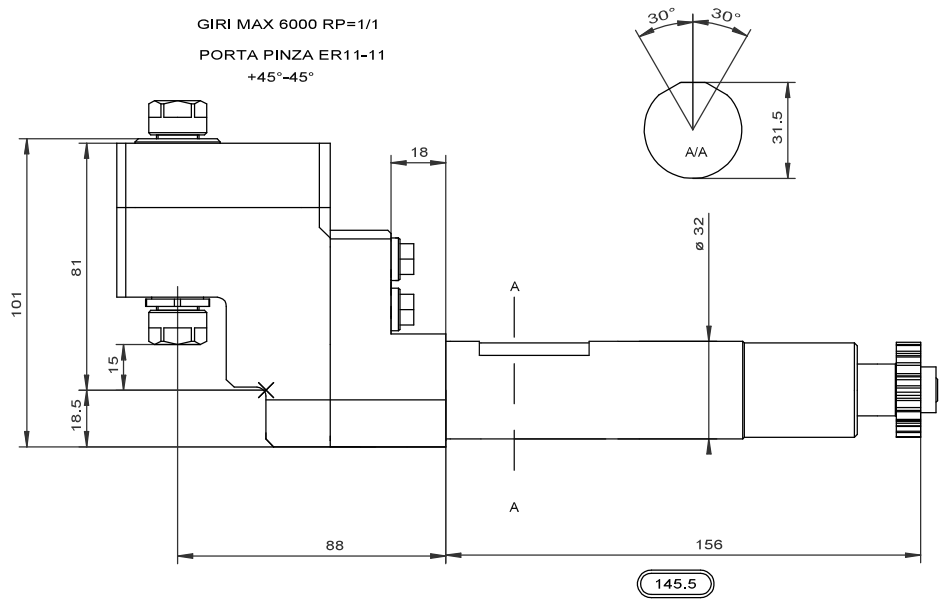
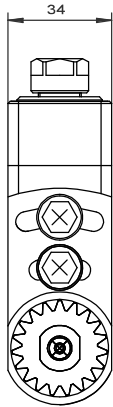


COD.010-500-CZ

MODULO ROTANTE ORIENTABILE DOPPIO

GIRI MAX 6000 RP=1/1

PORTA PINZA ER11-11
+45°-45°



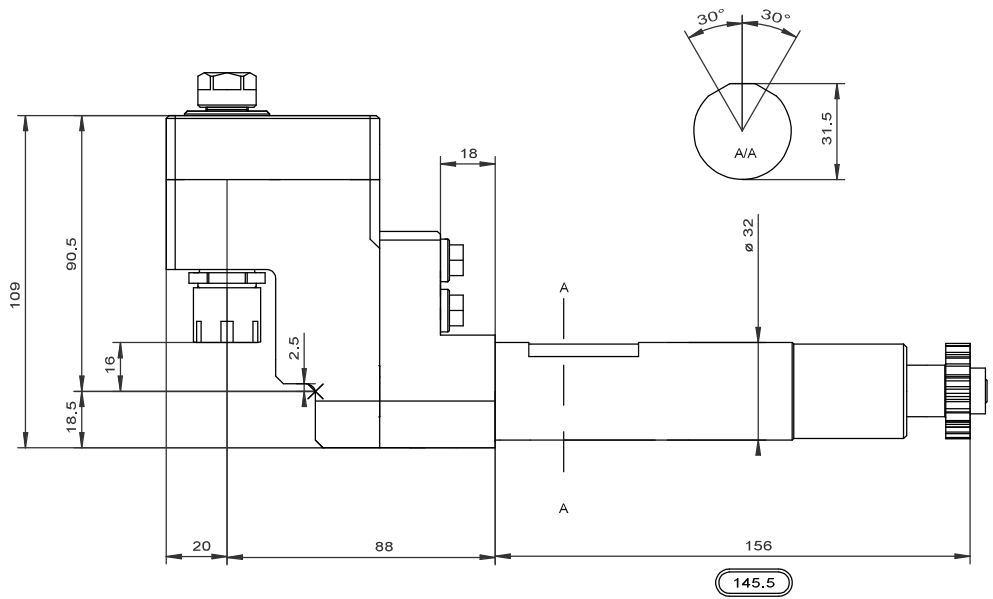
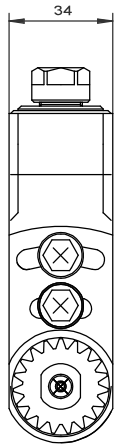
COD.011-500-CZ

MODULO ROTANTE ORIENTABILE DOPPIO

GIRI MAX 6000 RP=1/1

PORTA PINZA ER16-11

+45°-45°



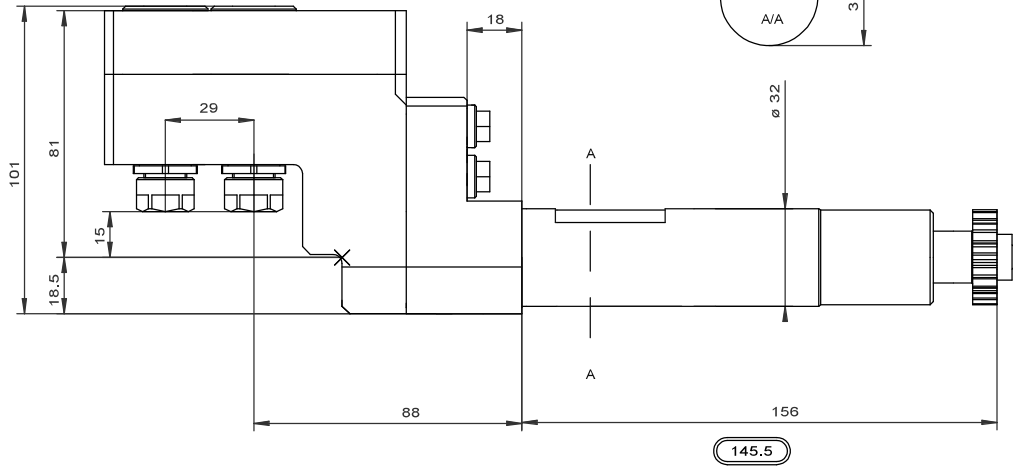
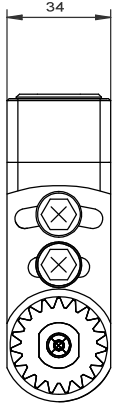
COD.012-500-CZ

MODULO ROTANTE ORIENTABILE 2 USCITE

+45°-45°

GIRI MAX 6000 RP=1/1

PORTA PINZA ER11-11



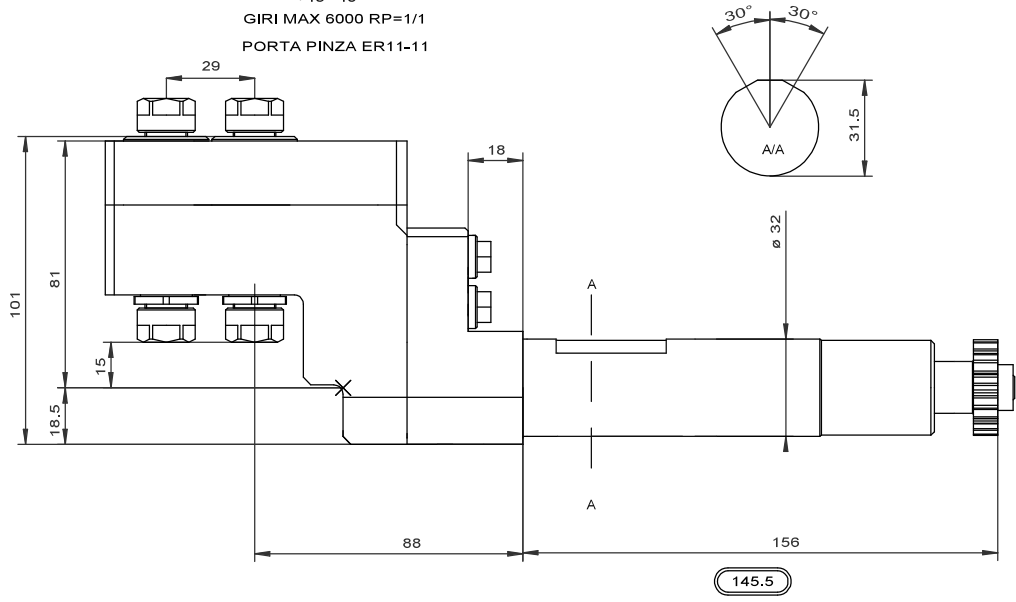
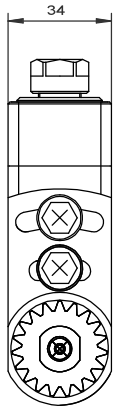
COD.013-500-CZ

MODULO ROTANTE ORIENTABILE 4 USCITE

+45°-45°

GIRI MAX 6000 RP=1/1

PORTA PINZA ER11-11



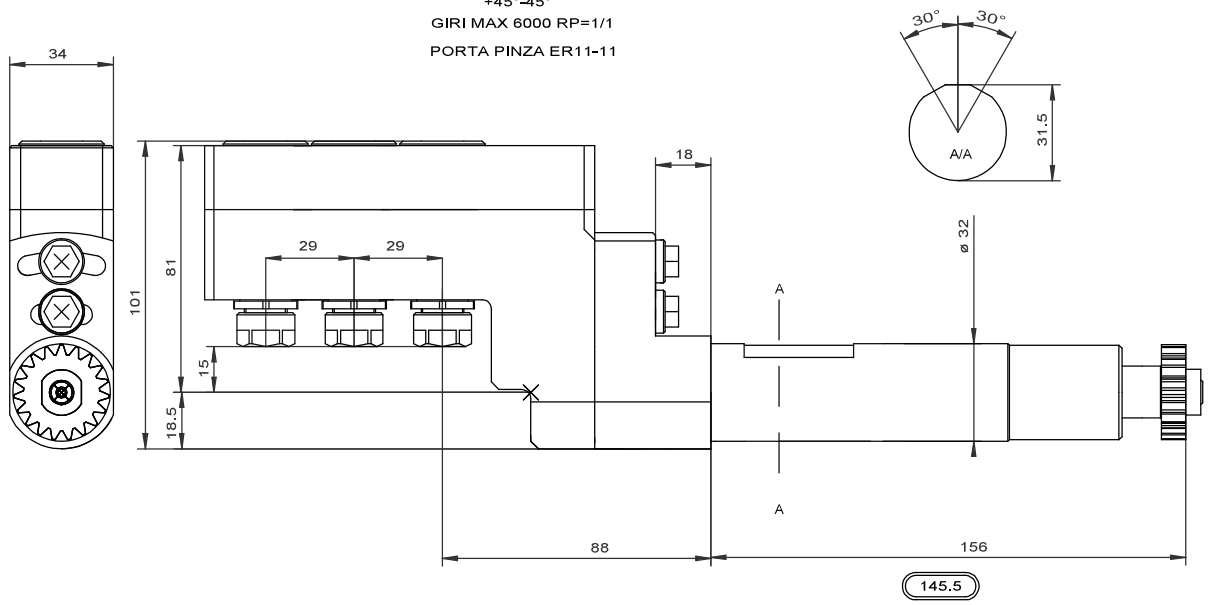
COD.014-500-CZ

MODULO ROTANTE ORIENTABILE 3 USCITE

+45°-45°

GIRI MAX 6000 RP=1/1

PORTA PINZA ER11-11



COD.015-500-CZ

MODULO ROTANTE ORIENTABILE 6 USCITE

+45°-45°

GIRI MAX 6000 RP=1/1

PORTA PINZA ER11-11

