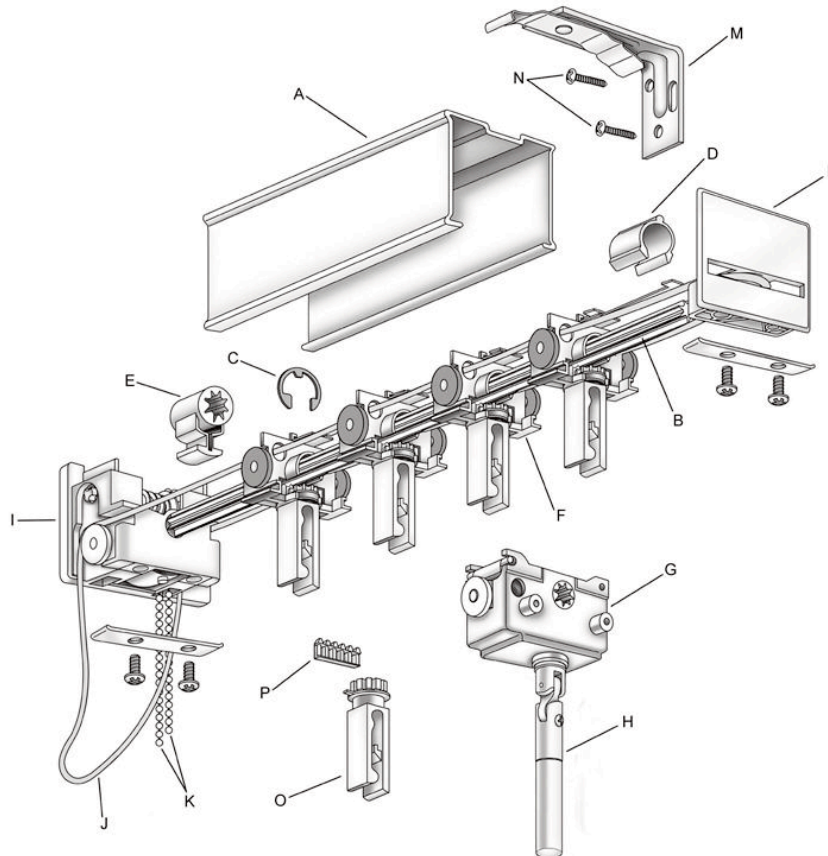


**Product Cut Sheet:
Vertical Blind Headrail System**



Parts:

- | | | | |
|----|---------------------------------|----|---|
| A) | Headrail — Aluminum or Steel | D) | End Control |
| B) | Pinion Rod (Tilt Rod) — 8 Prong | J) | Nylon Cord |
| C) | Stop C Clip | K) | Chain #6 N.P.S. (Nickel Plated Steel) |
| D) | Spacer Clip | L) | Idle End |
| E) | Traverse Lock Spacer | M) | Installation Bracket with Ceiling Clamp |
| F) | Carrier | N) | Installation Screws |
| G) | Wand Control | O) | Replaceable Carrier Stem |
| H) | Wand | P) | Replaceable Carrier Gear |

System Features:

- 8-Prong Pinion Strap System
- Self-Aligning Wheeled Carrier with Replaceable Stem and Gear
- Self-Lubricated Acetal parts
- Reinforced Strap between Carriers
- Precision-Molded Double Worm Pinion Gear

Headrail Options:

- Cord & Chain Control
- Wand Control

Product Cut Sheet: Vertical Blind Headrail System



Headrail:

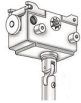
- Available in White or Ivory baked enamel
- Aluminum Alloy — 1 3/6" x 1 1/4" high
- Wall thickness — 0.040"

Controls:



Cord & Chain Control Option

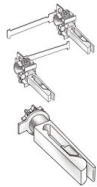
- Reduction control is made of acetal plastic, which allows for precise control of light using #6 N.P.S. chain
- End controls are covered to enclose sprockets and the rotating tilt rod ends
- Traverse cord roller allows extended cord life and ease of operation



Wand Control Option (Safety Track)

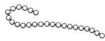
- Equipped with a left and right idler end, which holds the tilt rod and covers both ends of the headrail
- Control made of acetal plastic with a reduction gear
- Firmly encircles the tilt rod, which provides smooth rotation

Carriers:



- Molded in acetal plastic with strap links attached
- A self-aligning carrier feature allows uniform rotation
- Two independent self-lubricating wheels for easy traversing
- Rotation of the louver is controlled by the precision-molded rack and pinion gear
- Replaceable louver hanger system allows for fast and efficient repair without disassembling the headrail

Rotation:



Cord & Chain Control Option

- #6 N.P.S. (Nickel Plated Steel) chain
- 8-prong tilt rod is made of extruded aluminum
- Tilt rod passes through all the louver carriers, providing rotation to each louver by means of a precision-molded rack and pinion gear system

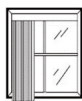


Wand Control Option

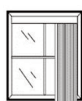
- Provides 180 degree rotation to each louver simultaneously through a gear system in the control housing, turning the 8-prong tilt rod

Stacking:

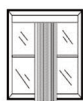
- One Way Draw (Left or Right)
- Split-Draw (Center Opening)
- Center Stack (Side Opening)
- Blind traverses by means of a synthetic traverse cord or wand control pull



Left Stack



Right Stack



Center Stack



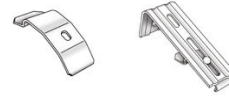
Center Split

Louver Spacing:

- Plastic strap link system
- Normal louver spacing has a 3/8" overlap
- Available in 2" and 3 1/2" louvers

Mounting Hardware:

- A variety of installation clips and brackets are available



Size Recommendations:

- Minimum Width — 5"
- Minimum Drop — 8 1/2"
- Maximum Width — 192"
- Maximum Drop — 144"

Louvers:

- PVC
 - PVC Resin (base material), Methyltin Mercaptide (stabilizer), Calcium Carbonate (filler), Titanium Dioxide (UV inhibitor), Methyl Methacrylate (lubricant), Ethylenebis (lubricant), Octabenzene (UV inhibitor)
 - Lead Free
 - N.F.P.A. 701