



# GIA GEM TRADE LABORATORY

New York Headquarters  
580 Fifth Avenue | New York, NY 10036-4794  
T: 212-221-5858 | F: 212-575-3095

Carlsbad  
5355 Armada Drive | Carlsbad, CA 92008-4699  
T: 760-603-4500 | F: 760-603-1814

## DIAMOND GRADING REPORT

December 11, 2001

Shape and Cutting Style ..... CUT-CORNERED  
RECTANGULAR MODIFIED BRILLIANT

Measurements ..... 5.97 x 5.28 x 3.87 mm

Weight ..... 1.00 carat

### Proportions

Depth ..... 73.3 %

Table ..... 71 %

Girdle ..... THIN TO THICK

Culet ..... NONE

### Finish

Polish ..... VERY GOOD

Symmetry ..... GOOD

Clarity Grade ..... SI1

Color Grade ..... F

Fluorescence ..... NONE

### Comments:

Clouds are not shown.

### GIA CLARITY SCALE

FLAWLESS

INTERNALLY  
FLAWLESS

VVS<sub>1</sub>

VVS<sub>2</sub>

VS<sub>1</sub>

VS<sub>2</sub>

SI<sub>1</sub>

SI<sub>2</sub>

I<sub>1</sub>

I<sub>2</sub>

I<sub>3</sub>

VERY VERY  
SLIGHTLY  
INCLUDED

VERY SLIGHTLY  
INCLUDED

SLIGHTLY INCLUDED

INCLUDED

### GIA COLOR SCALE

COLORLESS

NEAR COLORLESS

FAINT

VERY LIGHT

LIGHT

D

E

F

G

H

I

J

K

L

M

N

O

P

Q

R

S

T

U

V

W

X

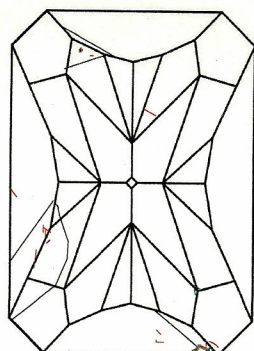
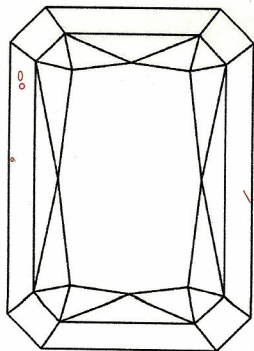
Y

Z



90246901

This Report is not a guarantee, valuation or appraisal. This Report contains only the characteristics of the diamond described herein after it has been graded, tested, examined and analyzed by GIA Gem Trade Laboratory under 10X magnification, and/or has been inscribed, using the techniques and equipment available to GIA Gem Trade Laboratory at the time of the examination and/or at the time of being inscribed, including fully corrected triplet loupe and binocular microscope, master color comparison diamonds, standardized viewing environment and light source, electronic carat balance, synthetic diamond screening device, high intensity short wave fluorescence imaging system, short wave ultraviolet transmission detection system, optical measuring device, micro laser inscribing device, ProportionScope®, ultraviolet lamps, millimeter gauge, and ancillary instruments as necessary. Red symbols denote internal characteristics (inclusions). Green or black symbols denote external characteristics (blemishes). Diagram is an approximate representation of the diamond, and symbols shown indicate type, position, and approximate size of clarity characteristics. All clarity characteristics may not be shown. Details of finish are not shown. The recipient of this Report may wish to consult a credentialed Jeweler or Gemologist about the importance and interrelationship of cut, color, clarity and carat weight.



### KEY TO SYMBOLS

~ Feather

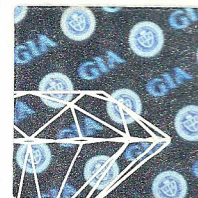
o Crystal

⊕ Cavity

^ Indented Natural

△ Natural

△ Extra Facet



### IMPORTANT DOCUMENT, STORE SAFELY

The security features in this document, including the hologram, security screen, microprint lines and chemical sensitivity, in addition to those not listed, exceed document security industry guidelines.

NOTICE: IMPORTANT  
LIMITATIONS ON BACK

COPYRIGHT ©2000 GEMOLOGICAL INSTITUTE OF AMERICA, INC.

GIA REPORT 11782002