



# GIA GEM TRADE LABORATORY

New York Headquarters  
580 Fifth Avenue | New York, NY 10036-4794  
T: 212-221-5858 | F: 212-575-3095

Carlsbad  
5355 Armada Drive | Carlsbad, CA 92008-4699  
T: 760-603-4500 | F: 760-603-1814

## DIAMOND GRADING REPORT

December 09, 2002

Shape and Cutting Style ..... ROUND BRILLIANT

Measurements ..... 6.98 - 7.02 x 4.19 mm

Weight ..... 1.26 carat

### Proportions

Depth ..... 59.9 %

Table ..... 59 %

Girdle ..... MEDIUM TO SLIGHTLY THICK, FACETED

Culet ..... NONE

### Finish

Polish ..... VERY GOOD

Symmetry ..... VERY GOOD

Clarity Grade ..... VS1

Color Grade ..... H

Fluorescence ..... NONE

### Comments:

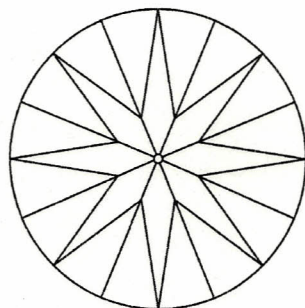
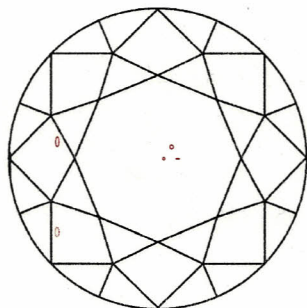
Additional clouds are not shown.



169772002

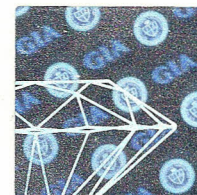
This Report is not a guarantee, valuation or appraisal. This Report contains only the characteristics of the diamond described herein after it has been graded, tested, examined and analyzed by GIA Gem Trade Laboratory under 10X magnification, and/or has been inscribed, using the techniques and equipment available to GIA Gem Trade Laboratory at the time of the examination and/or at the time of being inscribed, including fully corrected triplet loupe and binocular microscope, master color comparison diamonds, standardized viewing environment and light source, electronic carat balance, synthetic diamond screening device, high intensity short wave fluorescence imaging system, short wave ultraviolet transmission detection system, optical measuring device, micro laser inscribing device, ProportionScope®, ultraviolet lamps, millimeter gauge, and ancillary instruments as necessary. Red symbols denote internal characteristics (inclusions). Green or black symbols denote external characteristics (blemishes). Diagram is an approximate representation of the diamond, and symbols shown indicate type, position, and approximate size of clarity characteristics. All clarity characteristics may not be shown. Details of finish are not shown. The recipient of this Report may wish to consult a credentialed Jeweler or Gemologist about the importance and interrelationship of cut, color, clarity and carat weight.

GIA CLARITY SCALE		GIA COLOR SCALE	
FLAWLESS	VERY VERY SLIGHTLY INCLUDED	D	COLORLESS
INTERNALLY FLAWLESS		E	
VVS <sub>1</sub>	VERY SLIGHTLY INCLUDED	F	NEAR COLORLESS
VVS <sub>2</sub>		G	
VS <sub>1</sub>	SLIGHTLY INCLUDED	H	FAINT
VS <sub>2</sub>		I	
SI <sub>1</sub>	INCLUDED	J	VERY LIGHT
SI <sub>2</sub>		K	
		L	
		M	
		N	
		O	
		P	
		Q	
		R	
		S	
		T	
		U	
		V	
		W	
		X	
		Y	
		Z	



### KEY TO SYMBOLS

- Crystal
- Cloud
- △ Extra Facet



IMPORTANT DOCUMENT, STORE SAFELY

The security features in this document, including the hologram, security screen, microprint lines and chemical sensitivity, in addition to those not listed, exceed document security industry guidelines.

NOTICE: IMPORTANT  
LIMITATIONS ON BACK

COPYRIGHT ©2000 GEMOLOGICAL INSTITUTE OF AMERICA, INC.