



GIA GEM TRADE LABORATORY

New York Headquarters
580 Fifth Avenue | New York, NY 10036-4794
T: 212-221-5858 | F: 212-575-3095

Carlsbad
5355 Armada Drive | Carlsbad, CA 92008-4699
T: 760-603-4500 | F: 760-603-1814

DIAMOND GRADING REPORT

GIA REPORT 11910363

March 25, 2002

Shape and Cutting Style ROUND BRILLIANT

Measurements 6.42 - 6.47 x 3.81 mm

Weight 1.01 carat

Proportions

Depth 59.1 %

Table 62 %

Girdle SLIGHTLY THICK TO THICK, FACETED

Culet NONE

Finish

Polish VERY GOOD

Symmetry VERY GOOD

Clarity Grade SI2

Color Grade E

Fluorescence NONE

Comments:

Cloud is not shown.

GIA CLARITY SCALE

FLAWLESS

INTERNALLY
FLAWLESS

VVS₁

VVS₂

VS₁

VS₂

SI₁

SI₂

I₁

I₂

I₃

VERY VERY
SLIGHTLY
INCLUDED

VERY SLIGHTLY
INCLUDED

SLIGHTLY INCLUDED

INCLUDED

GIA COLOR SCALE

D

E

F

G

H

I

J

K

L

M

N

O

P

Q

R

S

T

U

V

W

X

Y

Z

COLORLESS

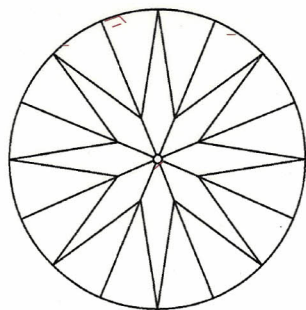
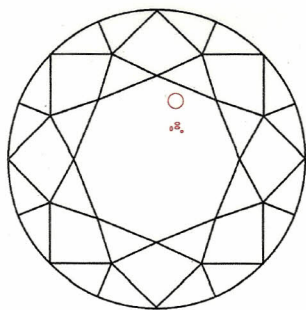
NEAR COLORLESS

FAINT

VERY LIGHT

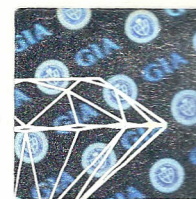
LIGHT

This Report is not a guarantee, valuation or appraisal. This Report contains only the characteristics of the diamond described herein after it has been graded, tested, examined and analyzed by GIA Gem Trade Laboratory under 10X magnification, and/or has been inscribed, using the techniques and equipment available to GIA Gem Trade Laboratory at the time of the examination and/or at the time of being inscribed, including fully corrected triplet loupe and binocular microscope, master color comparison diamonds, standardized viewing environment and light source, electronic carat balance, synthetic diamond screening device, high intensity short wave fluorescence imaging system, short wave ultraviolet transmission detection system, optical measuring device, micro laser inscribing device, ProportionScope®, ultraviolet lamps, millimeter gauge, and ancillary instruments as necessary. Red symbols denote internal characteristics (inclusions). Green or black symbols denote external characteristics (blemishes). Diagram is an approximate representation of the diamond, and symbols shown indicate type, position, and approximate size of clarity characteristics. All clarity characteristics may not be shown. Details of finish are not shown. The recipient of this Report may wish to consult a credentialed Jeweler or Gemologist about the importance and interrelationship of cut, color, clarity and carat weight.



KEY TO SYMBOLS

- Crystal
- ~ Feather



IMPORTANT DOCUMENT, STORE SAFELY

The security features in this document, including the hologram, security screen, microprint lines and chemical sensitivity, in addition to those not listed, exceed document security industry guidelines.

NOTICE: IMPORTANT LIMITATIONS ON BACK

COPYRIGHT ©2000 GEMOLOGICAL INSTITUTE OF AMERICA, INC.