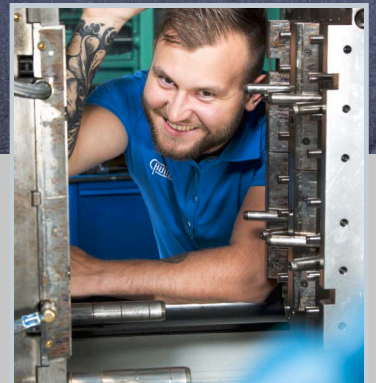


ENCLOSURE SOLUTIONS





HUMMEL AG is a renowned manufacturer of connection technology and components for electric and heating areas. The medium sized family business stands for quality, precision, reliability and pronounced service consciousness. A wide vertical range of manufacture with in-house development, construction, toolmaking, manufacturing, electroplating and assembling from a single source, offers best conditions for implementing individual solutions.



Series 11 – Small Enclosures made of PC or ABS ▶ 4



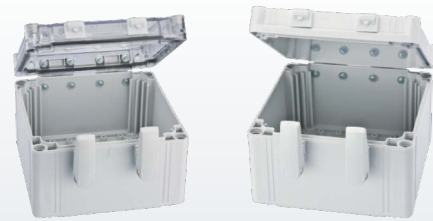
Series 12 – Mid size Enclosures made of PC or ABS ▶ 6



Series 13 – Large Enclosures made of PC or ABS ▶ 10



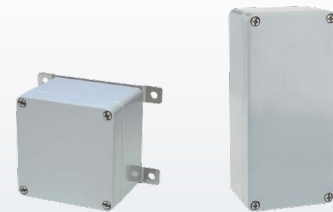
Series 14 – Wall mounted Enclosures made of PC ▶ 12



Series 15 – Aluminium Enclosures ▶ 14



Series 17 – Enclosures made of Polyester ▶ 16



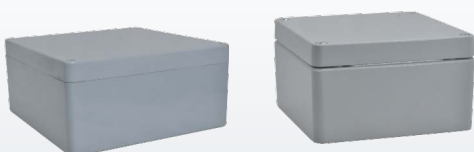
Series 18 – Enclosures made of Steel ▶ 18



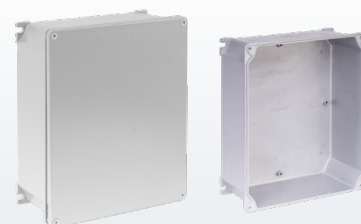
Series 19 – Enclosures made of Stainless Steel ▶ 20



Ex Enclosures ▶ 22



Series 30 - Enclosure with external mounting flanges ▶ 26



Accessories ▶ 26

Technical Informations ▶ 30

Customized Enclosures ▶ 33

Small Enclosures made of PC or ABS



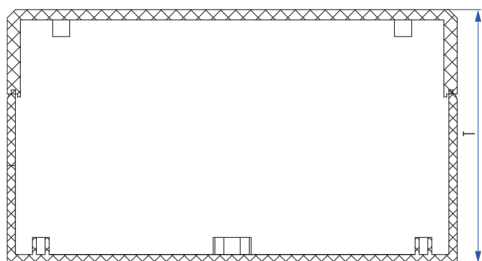
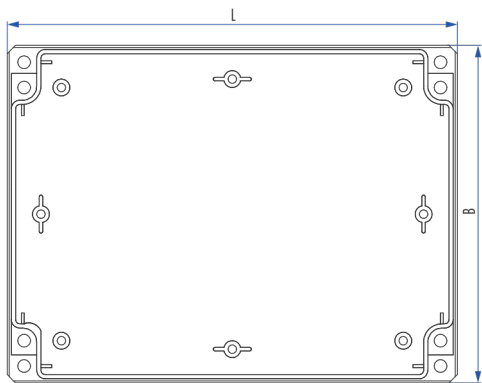
The Enclosures are manufactured using the highest grade Thermoplastics, Polycarbonate, and ABS for demanding OEM applications. e.g. protecting electronic - & pneumatic components.

Technical Informations	Protection according to EN 60529	IP 66, IP 67
	Impact rating according to EN 62262	PC: IK 08 (-25 °C – 35 °C) ABS: IK 06 (-25 °C) IK 07 (35 °C)
	Temperature range	PC: -40 °C – 80 °C ABS: -40 °C – 60 °C
	Flammability	PC: UL746C 5V ABS: UL94 HB

Material	Bottom	ABS or Fiber reinforced Polycarbonat
	Cover	ABS or Polycarbonat
	Transparent cover	Polycarbonat
	Cover Screws	Stainless Steel
	Gasket	PUR (Polyurethane)

Color	Bottom	grey, RAL 7035
	Cover	grey, RAL 7035 or transparent

Accessories	Mounting plate	1,5 mm thick, galvanized steel
	DIN Rail	DIN 15 and DIN 35
	Additional accessories on page 26	



PC-Enclosure	ABS-Enclosure

*on request

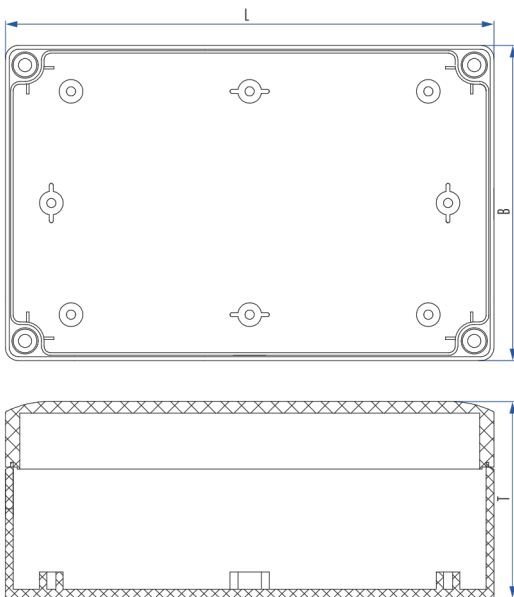
Enclosure Variants

Size mm B x L x T	Enclosure				Mounting plate 1,5 mm thick, galvanized steel	Accessories	
	Polycarbonat		ABS			DIN 15	DIN 35
	grey	transparent	grey	transparent			
53 x 55 x 36	3.110.0500.05	3.110.0500.12	3.110.0500.29	3.110.0500.36		3.110.0509.37	
53 x 65 x 36	3.110.0500.43	3.110.0500.50	3.110.0500.67	3.110.0500.74		3.110.0509.44	
80 x 82 x 56	3.110.0500.81	3.110.0500.98	3.110.0501.04	3.110.0501.11	3.110.0508.21	3.110.0509.51	3.110.0509.68
80 x 82 x 86	3.110.0501.28	3.110.0501.35	3.110.0501.42	3.110.0501.59	3.110.0508.21	3.110.0509.51	3.110.0509.68
80 x 120 x 56	3.110.0501.66	3.110.0501.73	3.110.0501.80	3.110.0501.97	3.110.0508.38	3.110.0509.75	3.110.0509.82
80 x 120 x 86	3.110.0502.03	3.110.0502.10	3.110.0502.27	3.110.0502.34	3.110.0508.38	3.110.0509.75	3.110.0509.82
80 x 160 x 56	3.110.0502.41	3.110.0502.58	3.110.0502.65	3.110.0502.72	3.110.0508.45	3.110.0509.99	3.110.0510.02
80 x 160 x 86	3.110.0502.89	3.110.0502.96	3.110.0503.02	3.110.0503.19	3.110.0508.45	3.110.0509.99	3.110.0510.02
120 x 122 x 56	3.110.0503.26	3.110.0503.33	3.110.0503.40	3.110.0503.57	3.110.0508.52	3.110.0509.75	3.110.0509.82
120 x 122 x 86	3.110.0503.64	3.110.0503.71	3.110.0503.88	3.110.0503.95	3.110.0508.52	3.110.0509.75	3.110.0509.82
120 x 160 x 91	3.110.0504.01	3.110.0504.18	3.110.0504.25	3.110.0504.32	3.110.0508.69	3.110.0509.99	3.110.0510.02
120 x 200 x 86	3.110.0504.87	3.110.0504.94	3.110.0505.00	3.110.0505.17	3.110.0508.76		3.110.0510.57
150 x 200 x 76	3.110.0505.62	3.110.0505.79	3.110.0505.86	3.110.0505.93	3.110.0508.90		3.110.0510.71
160 x 240 x 91	3.110.0506.09	3.110.0506.16	3.110.0506.23	3.110.0506.30	3.110.0509.06		3.110.0561.20
160 x 240 x 121	3.110.0506.47	3.110.0506.54	3.110.0506.61	3.110.0506.78	3.110.0509.06		3.110.0561.20
230 x 300 x 86	3.110.0507.22	3.110.0507.39	3.110.0507.46	3.110.0507.53	3.110.0509.20		3.110.0511.01
230 x 300 x 111	3.110.0507.60	3.110.0507.77	3.110.0507.84	3.110.0507.91	3.110.0509.20		3.110.0511.01

Mid size Enclosures made of PC or ABS



Manufactured from high performance Thermoplastic, Polycarbonate or ABS. These Enclosures are suitable for demanding OEM applications, e.g. for the protection of electronic and pneumatic components. This series includes small and medium sized universal Enclosures made of Polycarbonate with metric or PG knockouts. The Enclosures are available in increments of 25 mm (1"), e.g. 75 x 125 x 75 to 175 x 250 x 150 mm.



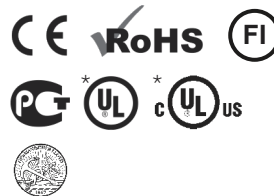
Technical Informations	Protection according to EN 60529	IP 66, IP 67
	Impact rating according to EN 62262	PC: IK 08 (-25 °C – 35 °C) ABS: IK 06 (-25 °C) IK 07 (35 °C)
	Temperature range	PC: -40 °C – 80 °C ABS: -40 °C – 60 °C
	Flammability	PC: UL746C 5V ABS: UL94 HB

Material	Bottom	ABS or Fiber reinforced Polycarbonate
	Cover	ABS or Polycarbonate
	Transp. cover	Polycarbonate
	Cover screws	Fiber reinforced Polyamid
	Gasket	PUR (Polyurethane)

Color	Bottom	grey, RAL 7035
	Cover	grey, RAL 7035 or transparent

Accessories	Mounting plate	1,5 mm thick, galvanized steel
	DIN Rail	DIN 35
	Additional accessories on page 26	

PC-Enclosure



ABS-Enclosure



*on request

Enclosure Variants

Size mm B x L x T	Enclosure					
	grey cover	Polycarbonat				transp. cover
		grey cover metric knockouts	grey cover PG knockouts	transp. cover	transp. cover metric knockouts	transp. cover PG knockouts
75 x 125 x 35	3.120.0550.25			3.120.0550.38		
75 x 125 x 50	3.120.0550.26			3.120.0550.39		
75 x 125 x 60	3.120.0550.27	3.120.0550.07 ¹	3.120.0550.01 ⁷	3.120.0550.40	3.120.0550.12 ¹	3.120.0550.04 ⁷
75 x 125 x 75	3.120.0550.31	3.120.0663.58 ¹	3.120.0550.00 ⁷	3.120.0550.24	3.120.0665.25 ¹	3.120.0550.17 ⁷
75 x 125 x 100	3.120.0550.86	3.120.0663.65 ¹	3.120.0550.62 ⁷	3.120.0550.93	3.120.0665.32 ¹	3.120.0550.79 ⁷
75 x 125 x 125	3.120.0551.47	3.120.0663.72 ¹	3.120.0551.23 ⁷	3.120.0551.54	3.120.0665.49 ¹	3.120.0551.30 ⁷
100 x 100 x 35	3.120.0550.28			3.120.0550.41		
100 x 100 x 60	3.120.0550.29	3.120.0550.08 ³		3.120.0550.42	3.120.0550.13 ³	
125 x 125 x 35	3.120.0550.30			3.120.0550.43		
125 x 125 x 50	3.120.0550.32			3.120.0550.44		
125 x 125 x 60	3.120.0550.33	3.120.0550.09 ³	3.120.0550.02 ⁸	3.120.0550.45	3.120.0550.14 ²	3.120.0550.05 ⁸
125 x 125 x 75	3.120.0552.08	3.120.0663.89 ²	3.120.0551.85 ⁸	3.120.0552.15	3.120.0665.56 ²	3.120.0551.92 ⁸
125 x 125 x 100	3.120.0552.60	3.120.0663.96 ²	3.120.0552.46 ⁸	3.120.0552.77	3.120.0665.63 ²	3.120.0552.53 ⁸
125 x 125 x 125	3.120.0553.21	3.120.0664.02 ²	3.120.0553.07 ⁸	3.120.0553.38	3.120.0665.70 ²	3.120.0553.14 ⁸
125 x 175 x 35	3.120.0550.34			3.120.0550.46		
125 x 175 x 50	3.120.0550.35			3.120.0550.47		
125 x 175 x 60	3.120.0550.36	3.120.0550.10 ³	3.120.0550.03 ⁹	3.120.0550.49	3.120.0550.15 ³	3.120.0550.06 ⁹
125 x 175 x 75	3.120.0553.83	3.120.0664.19 ³	3.120.0553.69 ⁹	3.120.0553.90	3.120.0665.87 ³	3.120.0553.76 ⁹
125 x 175 x 100	3.120.0554.44	3.120.0664.26 ³	3.120.0554.20 ⁹	3.120.0554.51	3.120.0665.94 ³	3.120.0554.37 ⁹
125 x 175 x 125	3.120.0555.05	3.120.0664.33 ³	3.120.0554.82 ⁹	3.120.0555.12	3.120.0666.00 ³	3.120.0554.99 ⁹
125 x 175 x 150	3.120.0555.67	3.120.0664.40 ³	3.120.0555.43 ⁹	3.120.0555.74	3.120.0666.17 ³	3.120.0555.50 ⁹
125 x 250 x 125	3.120.0550.37	3.120.0550.11 ⁴		3.120.0550.50	3.120.0550.16 ⁴	
175 x 175 x 75	3.120.0556.28	3.120.0664.57 ⁵	3.120.0556.04 ¹⁰	3.120.0556.35	3.120.0666.24 ⁵	3.120.0556.11 ¹⁰
175 x 175 x 100	3.120.0556.80	3.120.0664.64 ⁵	3.120.0556.66 ¹⁰	3.120.0556.97	3.120.0666.31 ⁵	3.120.0556.73 ¹⁰
175 x 175 x 125	3.120.0557.41	3.120.0664.71 ⁵	3.120.0557.27 ¹⁰	3.120.0557.58	3.120.0666.48 ⁵	3.120.0557.34 ¹⁰
175 x 175 x 150	3.120.0558.02	3.120.0664.88 ⁵	3.120.0557.89 ¹⁰	3.120.0558.19	3.120.0666.55 ⁵	3.120.0557.96 ¹⁰
175 x 250 x 75	3.120.0558.64	3.120.0664.95 ⁶	3.120.0557.40 ¹¹	3.120.0558.71	3.120.0666.62 ⁶	3.120.0558.57 ¹¹
175 x 250 x 100	3.120.0559.25	3.120.0665.01 ⁶	3.120.0559.01 ¹¹	3.120.0559.32	3.120.0666.79 ⁶	3.120.0559.18 ¹¹
175 x 250 x 150	3.120.0559.87	3.120.0665.18 ⁶	3.120.0559.63 ¹¹	3.120.0559.94	3.120.0666.86 ⁶	3.120.0559.70 ¹¹

1 A: each 3x ø12 mm / 20 mm, B: je 1x ø16 mm / 25 mm

2 A: each 3x ø12 mm / 20 mm, B: je 2x ø16 mm / 25 mm

3 A: each 4x ø12 mm / 20 mm, B: je 2x ø16 mm / 25 mm

4 B: each 4x ø20 mm / 25 mm

5 A: each 5x ø12 mm / 20 mm, B: je 2x ø12 mm / 20 mm + 2x ø16 mm / 25 mm

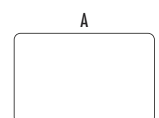
7 A: each 3x PG 9 / PG 13,5, B: je 1x PG 9 / PG 13,5

8 A: each 3x PG 9 / PG 13,5, B: je 2x PG 16 / PG 21

9 A: each 4x PG 9 / PG 13,5, B: je 2x PG 16 / PG 21

10 A: each 5x PG 9 / PG 13,5, B: je 2x PG 16 / PG 21 + 2x PG 9 / PG 16

11 A: each 6x PG 9 / PG 13,5, B: je 2x PG 16 / PG 21 + 2x PG 9 / PG 16



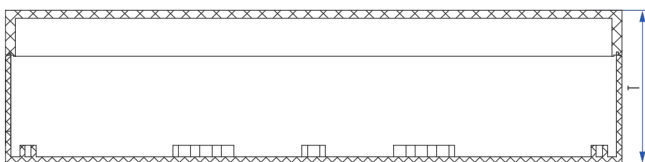
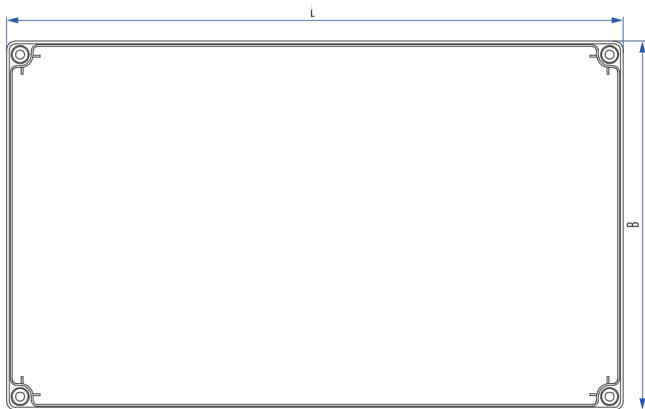
Size mm B x L x T	Enclosure	
	grey cover	ABS Transp. cover
75 x 125 x 35	3.120.0550.51	3.120.0550.65
75 x 125 x 50	3.120.0550.52	3.120.0550.66
75 x 125 x 60	3.120.0550.53	3.120.0550.67
75 x 125 x 75	3.120.0550.48	3.120.0550.55
75 x 125 x 100	3.120.0551.09	3.120.0551.16
75 x 125 x 125	3.120.0551.61	3.120.0551.78
100 x 100 x 35	3.120.0550.54	3.120.0550.68
100 x 100 x 60	3.120.0550.56	3.120.0550.69
125 x 125 x 35	3.120.0550.57	3.120.0550.70
125 x 125 x 50	3.120.0550.58	3.120.0550.71
125 x 125 x 60	3.120.0550.59	3.120.0550.72
125 x 125 x 75	3.120.0552.22	3.120.0552.39
125 x 125 x 100	3.120.0552.84	3.120.0552.91
125 x 125 x 125	3.120.0553.45	3.120.0553.52
125 x 175 x 35	3.120.0550.60	3.120.0550.73
125 x 175 x 50	3.120.0550.61	3.120.0550.74
125 x 175 x 60	3.120.0550.63	3.120.0550.75
125 x 175 x 75	3.120.0554.06	3.120.0554.13
125 x 175 x 100	3.120.0554.68	3.120.0554.75
125 x 175 x 125	3.120.0555.29	3.120.0555.36
125 x 175 x 150	3.120.0555.81	3.120.0555.98
125 x 250 x 125	3.120.0550.64	3.120.0550.76
175 x 175 x 75	3.120.0556.42	3.120.0556.59
175 x 175 x 100	3.120.0557.03	3.120.0557.10
175 x 175 x 125	3.120.0557.65	3.120.0557.72
175 x 175 x 150	3.120.0558.26	3.120.0558.33
175 x 250 x 75	3.120.0558.88	3.120.0558.95
175 x 250 x 100	3.120.0559.49	3.120.0559.56
175 x 250 x 150	3.120.0560.07	3.120.0560.14

Size mm B x L x T	Accessories		
	Mounting plate 1,5 mm thick galvanized steel	DIN Rail	
		DIN 35 short side	DIN 35 long side
75 x 125 x 35			
75 x 125 x 50			
75 x 125 x 60			
75 x 125 x 75	3.120.0560.38	3.120.0560.90	3.120.0561.06
75 x 125 x 100	3.120.0560.38	3.120.0560.90	3.120.0561.06
75 x 125 x 125	3.120.0560.38	3.120.0560.90	3.120.0561.06
100 x 100 x 35	3.120.0550.18		3.120.0550.20
100 x 100 x 60	3.120.0550.18		3.120.0550.20
125 x 125 x 35			
125 x 125 x 50			
125 x 125 x 60			
125 x 125 x 75	3.120.0560.45		3.120.0561.06
125 x 125 x 100	3.120.0560.45		3.120.0561.06
125 x 125 x 125	3.120.0560.45		3.120.0561.06
125 x 175 x 35			
125 x 175 x 50			
125 x 175 x 60			
125 x 175 x 75	3.120.0560.52	3.120.0561.06	3.120.0561.13
125 x 175 x 100	3.120.0560.52	3.120.0561.06	3.120.0561.13
125 x 175 x 125	3.120.0560.52	3.120.0561.06	3.120.0561.13
125 x 175 x 150	3.120.0560.52	3.120.0561.06	3.120.0561.13
125 x 250 x 125			
175 x 175 x 75	3.120.0560.69		3.120.0561.13
175 x 175 x 100	3.120.0560.69		3.120.0561.13
175 x 175 x 125	3.120.0560.69		3.120.0561.13
175 x 175 x 150	3.120.0560.69		3.120.0561.13
175 x 250 x 75	3.120.0560.76	3.120.0561.13	3.120.0561.20
175 x 250 x 100	3.120.0560.76	3.120.0561.13	3.120.0561.20
175 x 250 x 150	3.120.0560.76	3.120.0561.13	3.120.0561.20

Large Enclosures made of PC or ABS



Manufactured from high performance Thermoplastic, Polycarbonate or ABS. These Enclosures are suitable for demanding OEM applications, e.g. for the protection of electronic and pneumatic components. This series with plain sidewalls is also available with flange and metric knockouts. Enclosure dimensions vary in 100 mm increments, the smallest being 200 x 200 x 132 mm, the largest 400 x 600 mm with a depth of 187 mm. By adding an extension frame, depth can be increased in increments of 55 mm. A special feature is the adjustable height for the mounting plate, made possible by a slotted guide in each inside corner of the Enclosure.



Technical Informations	Protection according to EN 60529	IP 66, IP 67
	Impact rating according to EN 62262	PC: IK 08 (-25 °C – 35 °C) ABS: IK 07 (-25 °C) IK 08 (35 °C)
	Temperature range	PC: -40 °C – 80 °C ABS: -40 °C – 60 °C
	Flammability	PC: UL746C 5V ABS: UL94 HB

Material	Bottom	ABS or Fiber reinforced Polycarbonate
	Cover	ABS or Polycarbonate
	Transp. cover	Polycarbonate
	Cover screws	Fiber reinforced Polyamid
	Gasket	PUR (Polyurethane)

Color	Bottom	grey, RAL 7035
	Cover	grey, RAL 7035 or transparent

Accessories	Mounting plate	1,5 mm thick, galvanized steel
	DIN Rail	DIN 15 and DIN 35
	Extension frame PC	for an additional 55 mm depth
	Additional accessories on page 27	

PC-Enclosure

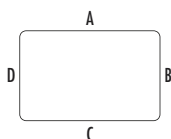
ABS-Enclosure

*on request

Enclosure Variants

Size mm B x L x T	Enclosure					
	Polycarbonat					
	grey cover plain sides	grey cover Flange knockouts	grey cover metric knockouts	transp. cover plain sides	transp. cover Flange knockouts	transp. cover metric knockouts
200 x 200 x 132	3.130.0844.13	3.130.0721.20 ¹		3.130.0843.45	3.130.0721.99 ¹	
200 x 200 x 187	3.130.0846.28	3.130.0821.67 ¹		3.130.0846.97	3.130.0822.35 ¹	
200 x 300 x 132	3.130.0844.20	3.130.0721.37 ³		3.130.0843.52	3.130.0722.05 ³	
200 x 300 x 187	3.130.0846.35	3.130.0821.74 ³		3.130.0847.03	3.130.0822.42 ³	
200 x 400 x 132	3.130.0844.37	3.130.0721.44 ³		3.130.0843.69	3.130.0722.12 ³	
200 x 400 x 187	3.130.0846.42	3.130.0821.81 ³		3.130.0847.10	3.130.0822.59 ³	
300 x 300 x 132	3.130.0844.44	3.130.0721.51 ²	3.130.0578.99 ⁵	3.130.0843.76	3.130.0722.29 ²	3.130.0579.29 ⁵
300 x 300 x 187	3.130.0846.59	3.130.0821.98 ²	3.130.0579.50 ⁵	3.130.0847.27	3.130.0822.66 ²	3.130.0579.81 ⁵
300 x 400 x 132	3.130.0844.51	3.130.0721.68 ²	3.130.0579.05 ⁶	3.130.0843.83	3.130.0722.36 ²	3.130.0579.36 ⁶
300 x 400 x 187	3.130.0846.66	3.130.0822.04 ²	3.130.0579.67 ⁶	3.130.0847.34	3.130.0822.73 ²	3.130.0579.98 ⁶
300 x 600 x 132	3.130.0844.68	3.130.0721.75 ⁴	3.130.0579.12 ⁶	3.130.0843.90	3.130.0722.43 ⁴	3.130.0579.43 ⁶
300 x 600 x 187	3.130.0846.73	3.130.0822.11 ⁴	3.130.0579.74 ⁶	3.130.0847.41	3.130.0822.80 ⁴	3.130.0580.01 ⁶
400 x 400 x 132	3.130.0844.59	3.130.0721.71 ²		3.130.0843.87	3.130.0722.39 ²	
400 x 400 x 187	3.130.0846.70	3.130.0822.09 ²		3.130.0847.36	3.130.0822.77 ²	
400 x 600 x 132	3.130.0844.75	3.130.0721.82 ⁴		3.130.0844.06	3.130.0722.50 ⁴	
400 x 600 x 187	3.130.0846.80	3.130.0822.28 ⁴		3.130.0847.58	3.130.0822.97 ⁴	

- 1 A, B, C, D: each 1x F1
- 2 A, B, C, D: each 1x F2
- 3 A, C: each 1x F2, B, D: each 1x F1
- 4 A, C: each 2x F2, B, D: each 1x F2
- 5 B: 12x ø20 mm + 1x ø16/25 mm, D: 8x ø20 mm + 4x ø25/40 mm
- 6 B: 12x ø12/20 mm + 1x ø32/40 mm, D: 8x ø12/20 mm + 5x ø16 mm/25 mm



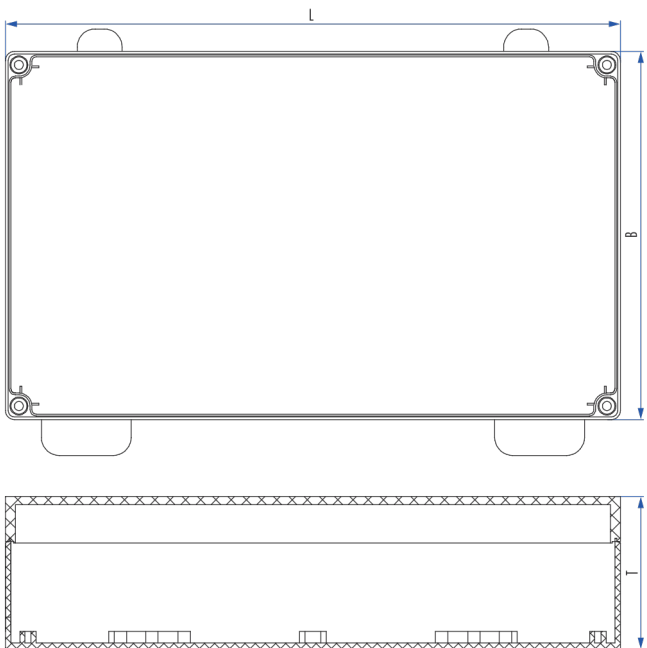
Size mm B x L x T	Enclosure		Accessories				
	ABS		Mounting plate		DIN Rail		Extension frame PC
	grey cover plain sides	transp. cover plain sides	1,5 mm thick galvanized steel	galvanized steel	DIN 35	DIN 35 long side	for an additional 55 mm depth
200 x 200 x 132	3.130.0845.50	3.130.0844.82	3.130.0646.75		3.130.0647.43		3.130.0646.06
200 x 200 x 187	3.130.0847.65	3.130.0848.33	3.130.0646.75		3.130.0647.43		3.130.0646.06
200 x 300 x 132	3.130.0845.67	3.130.0844.99	3.130.0646.82		3.130.0647.43 ⁹	3.130.0647.50	3.130.0646.13
200 x 300 x 187	3.130.0847.72	3.130.0848.40	3.130.0646.82		3.130.0647.43 ⁹	3.130.0647.50	3.130.0646.13
200 x 400 x 132	3.130.0845.74	3.130.0845.05	3.130.0646.99		3.130.0647.43 ⁹	3.130.0647.67	3.130.0646.20
200 x 400 x 187	3.130.0847.89	3.130.0848.57	3.130.0646.99		3.130.0647.43 ⁹	3.130.0647.67	3.130.0646.20
300 x 300 x 132	3.130.0845.81	3.130.0845.12	3.130.0647.05		3.130.0647.50		3.130.0646.37
300 x 300 x 187	3.130.0847.96	3.130.0848.64	3.130.0647.05		3.130.0647.50		3.130.0646.37
300 x 400 x 132	3.130.0845.98	3.130.0845.29	3.130.0647.12		3.130.0647.50 ⁹	3.130.0647.67	3.130.0646.44
300 x 400 x 187	3.130.0848.02	3.130.0848.71	3.130.0647.12		3.130.0647.50 ⁹	3.130.0647.67	3.130.0646.44
300 x 600 x 132	3.130.0846.04	3.130.0845.36	3.130.0647.29	3.130.0647.05 ⁷	3.130.0647.50 ⁹	3.130.0647.74	3.130.0646.51
300 x 600 x 187	3.130.0848.19	3.130.0848.88	3.130.0647.29	3.130.0647.05 ⁷	3.130.0647.50 ⁹	3.130.0647.74	3.130.0646.51
400 x 400 x 132	3.130.0846.01	3.130.0845.32	3.130.0647.20		3.130.0647.67		3.130.0646.48
400 x 400 x 187	3.130.0848.10	3.130.0848.79	3.130.0647.20		3.130.0647.67		3.130.0646.48
400 x 600 x 132	3.130.0846.11	3.130.0845.43	3.130.0647.36	3.130.0647.12 ⁸	3.130.0647.67 ⁹	3.130.0647.74	3.130.0646.68
400 x 600 x 187	3.130.0848.26	3.130.0848.95	3.130.0647.36	3.130.0647.12 ⁸	3.130.0647.67 ⁹	3.130.0647.74	3.130.0646.68

- 7 260 x 260 x 1,5 mm thick, galvanized steel
- 8 260 x 360 x 1,5 mm thick, galvanized steel
- 9 DIN 35 plain side

Wall mounted Enclosures made of PC



These Enclosures are equipped with pre-installed hinges and quick release latches. The accessories of series 13 fit these products.



Technical Informations	Protection according to EN 60529	IP 66, IP 67
	Impact rating according to EN 62262	PC: IK 08 (-25 °C – 35 °C)
	Temperature range	PC: -40 °C – 80 °C
	Flammability	PC: UL746C 5V

Material	Bottom	Fiber reinforced Polycarbonate
	Cover	Polycarbonate
	Cover screws	Fiber reinforced Polyamid
	Gasket	PUR (Polyurethane)

Color	Bottom	grey, RAL 7035
	Cover	grey, RAL 7035 or transparent

Accessories	Mounting plate	1,5 mm thick galvanisierter / galvanized steel
	DIN Rail	DIN 35
	Additional accessories on page 29	

PC-Enclosure



*on request

Size mm B x L x T	Enclosure	
	Polycarbonat	
	grey	transparent
200 x 200 x 132	3.140.0743.08	3.140.0743.84
200 x 200 x 187	3.140.0744.69	3.140.0745.44
200 x 300 x 132	3.140.0743.15	3.140.0743.91
200 x 300 x 187	3.140.0744.76	3.140.0745.51
200 x 400 x 132	3.140.0743.22	3.140.0744.07
200 x 400 x 187	3.140.0744.83	3.140.0745.68
300 x 300 x 132	3.140.0743.39	3.140.0744.14
300 x 300 x 187	3.140.0744.90	3.140.0745.75
300 x 400 x 132	3.140.0743.46	3.140.0744.21
300 x 400 x 187	3.140.0745.06	3.140.0745.82
300 x 600 x 132	3.140.0743.53	3.140.0744.38
300 x 600 x 187	3.140.0745.13	3.140.0745.99
400 x 400 x 132	3.140.0745.49	3.140.0744.29
400 x 400 x 187	3.140.0745.10	3.140.0745.91
400 x 600 x 132	3.140.0743.77	3.140.0744.52
400 x 600 x 187	3.140.0745.37	3.140.0746.12

Size mm B x L x T	Accessories					
	1,5 mm thick, galvanized steel	Mounting plate		DIN Rail		DIN Rail
		260 x 260 x 1,5 mm thick galvanized steel	260 x 360 x 1,5 mm thick galvanized steel	DIN 35	DIN 35 short side	DIN 35 long side
200 x 200 x 132	3.140.0646.75			3.140.0647.43		
200 x 200 x 187	3.140.0646.75			3.140.0647.43		
200 x 300 x 132	3.140.0646.82				3.140.0647.43	3.140.0647.50
200 x 300 x 187	3.140.0646.82				3.140.0647.43	3.140.0647.50
200 x 400 x 132	3.130.0646.99				3.140.0647.43	3.140.0647.67
200 x 400 x 187	3.140.0646.99				3.140.0647.43	3.140.0647.67
300 x 300 x 132	3.140.0647.05			3.140.0647.50		
300 x 300 x 187	3.140.0647.05			3.140.0647.50		
300 x 400 x 132	3.140.0647.12				3.140.0647.50	3.140.0647.67
300 x 400 x 187	3.140.0647.12				3.140.0647.50	3.140.0647.67
300 x 600 x 132	3.140.0647.29	3.140.0647.05			3.140.0647.50	3.140.0647.74
300 x 600 x 187	3.140.0647.29	3.140.0647.05			3.140.0647.50	3.140.0647.74
400 x 400 x 132	3.140.0647.20			3.140.0647.67		
400 x 400 x 187	3.140.0647.20			3.140.0647.67		
400 x 600 x 132	3.140.0647.36		3.140.0647.12		3.140.0647.67	3.140.0647.74
400 x 600 x 187	3.140.0647.36		3.140.0647.12		3.140.0647.67	3.140.0647.74

Aluminium Enclosures

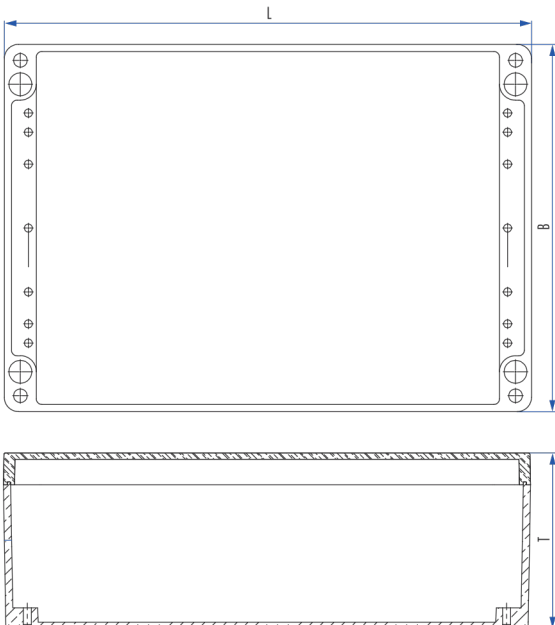


HUMMEL aluminium Enclosures are made of Al Si 12 and are RAL 7001 silver grey powder coated. Hinges can be mounted to its sides, latches to the bottom. Aluminium resist numerous alcalis and chemicals as well as oil and gasoline. They are very impact resistant.

Enclosures are available plain or in any RAL color. Other sizes are available upon request.

Technical Informations	Protection according to EN 60529	IP 66, IP 67* / 68*
	Impact rating according to EN 50102	IK 08 (-25 °C – 35 °C)
	Temperature range	-30 °C – 80 °C
Material	Bottom	Cast Aluminum or die casting
	Cover	Aluminium-Druck- oder Kokillenguss
	Cover screws	Stainless Steel, captive
	Gasket	Neoprene**
Color	Bottom	grey, RAL 7001
	Gasket	grey, RAL 7001
Accessories	Mounting plate	1,5 mm thick, galvanized steel
	DIN Rail	DIN 15, DIN 32 and DIN 35
	Hinges	Pair
	Fastening lugs	AISI 304

Aluminium-Enclosure



**PUR, EPDM, Silikon on request
*on request

Enclosure Variants

Size mm B x L x T	Enclosure		Accessories				
	Aluminium	Mounting plate	DIN Rail			Hinges	Fastening lugs
		galvanized steel	DIN 15	DIN 32	DIN 35	Pair	AISI 304
45 x 50 x 30	3.150.0654.50						
64 x 58 x 36	3.150.0657.71	3.150.0575.47					
64 x 98 x 36	3.150.0657.88	3.150.0575.54					
64 x 150 x 36	3.150.0657.95	3.150.0575.61					
80 x 75 x 57	3.150.0658.01	3.150.0575.78	3.150.0570.11			3.150.0577.45	
80 x 125 x 57	3.150.0658.18	3.150.0575.85	3.150.0570.28			3.150.0577.45	
80 x 175 x 57	3.150.0658.25	3.150.0575.92	3.150.0570.35			3.150.0577.45	
80 x 250 x 57	3.150.0658.32	3.150.0573.87	3.150.0570.42			3.150.0577.45	
100 x 100 x 81	3.150.0658.44	3.150.0573.55	3.150.0570.56				
160 x 100 x 81	3.150.0658.61	3.150.0573.72	3.150.0570.64				
120 x 122 x 90	3.150.0658.50	3.150.0576.08		3.150.0571.72	3.150.0570.59	3.150.0569.53	3.150.0569.77
120 x 220 x 90	3.150.0658.57	3.150.0576.15		3.150.0571.89	3.150.0570.66	3.150.0569.53	3.150.0569.77
120 x 360 x 90	3.150.0658.64	3.150.0576.22		3.150.0571.96	3.150.0570.73	3.150.0569.53	3.150.0569.77
140 x 140 x 90	3.150.0658.91	3.150.0573.93			3.150.0572.01	3.150.0569.53	3.150.0569.77
160 x 160 x 90	3.150.0658.70	3.150.0576.39		3.150.0572.02	3.150.0570.80	3.150.0569.53	3.150.0569.77
160 x 260 x 90	3.150.0658.87	3.150.0576.46		3.150.0572.19	3.150.0570.97	3.150.0569.53	3.150.0569.77
160 x 360 x 90	3.150.0658.94	3.150.0576.53		3.150.0571.96	3.150.0570.73	3.150.0569.53	3.150.0569.77
160 x 560 x 90	3.150.0659.00	3.150.0576.60		3.150.0572.26	3.150.0571.03	3.150.0569.53	3.150.0569.77
200 x 140 x 90	3.150.0660.22	3.150.0573.19			3.150.0572.23	3.150.0569.53	3.150.0569.77
180 x 180 x 100	3.150.0660.34	3.150.0573.28			3.150.0572.35	3.150.0569.53	3.150.0569.77
280 x 180 x 100	3.150.0660.49	3.150.0573.36			3.150.0572.46	3.150.0569.53	3.150.0569.77
230 x 200 x 110	3.150.0659.17	3.150.0576.77		3.150.0572.33	3.150.0571.10	3.150.0569.53	3.150.0569.78
230 x 200 x 180	3.150.0659.24	3.150.0576.77		3.150.0572.33	3.150.0571.10	3.150.0569.53	3.150.0569.78
230 x 280 x 110	3.150.0659.31	3.150.0576.48		3.150.0572.40	3.150.0571.34	3.150.0569.53	3.150.0569.78
230 x 330 x 110	3.150.0659.48	3.150.0576.91		3.150.0572.57	3.150.0571.41	3.150.0569.53	3.150.0569.78
230 x 330 x 180	3.150.0659.55	3.150.0576.91		3.150.0572.57	3.150.0571.41	3.150.0569.53	3.150.0569.78
230 x 400 x 110	3.150.0659.62	3.150.0577.07		3.150.0572.64	3.150.0571.58	3.150.0569.53	3.150.0569.78
230 x 600 x 110	3.150.0659.79	3.150.0577.14		3.150.0572.71	3.150.0571.65	3.150.0569.53	3.150.0569.78
310 x 402 x 110	3.150.0659.86	3.150.0577.21		3.150.0572.64	3.150.0571.58	3.150.0569.53	3.150.0569.78
310 x 402 x 180	3.150.0659.93	3.150.0577.21		3.150.0572.64	3.150.0571.58	3.150.0569.53	3.150.0569.78
310 x 600 x 110	3.150.0660.06	3.150.0577.38		3.150.0572.71	3.150.0571.65	3.150.0569.53	3.150.0569.78
310 x 600 x 180	3.150.0660.13	3.150.0577.38		3.150.0572.71	3.150.0571.65	3.150.0569.53	3.150.0569.78

Enclosures made of Polyester



Enclosures are made of fiber reinforced Polyester. They feature plain walls and captive stainless steel screws for the cover.

Due to their rugged construction, very good corrosion and chemical resistance, these Enclosures are suitable for chemical- and petrochemical environments.

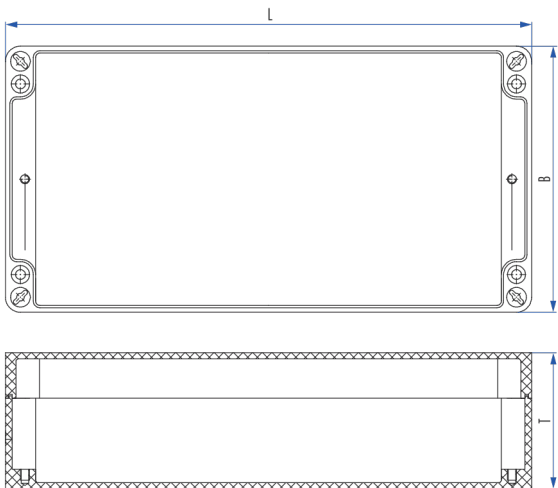
Technical Informations	Protection according to EN 60529	IP 67
	Impact rating according to EN 50102	IK 08 (-25 °C – 35 °C)
	Temperature range	-40 °C – 100 °C

Material	Bottom	Fiber reinforced Polyester
	Cover	Fiber reinforced Polyester
	Cover screws	Stainless Steel, captive
	Gasket	PUR (Polyurethane**)

Color	Bottom	grey, RAL 7000 bzw. black, RAL 9005
	Gasket	grey, RAL 7000 bzw. black, RAL 9005

Accessories	Mounting plate	1,5 mm thick galvanized steel
	DIN Rail	DIN 15 and DIN 35
	Hinges	Pair
	Fastening lugs	AISI 304

Polyester-Enclosure



**CR, EPDM, Silikon on request
*on request

Enclosure Variants

Size mm	Enclosure	
	Polyester	
	grey	black
B x L x T		
75 x 80 x 55	3.170.0656.10	3.170.0656.19
75 x 110 x 55	3.170.0656.27	3.170.0656.30
75 x 160 x 55	3.170.0656.34	3.170.0656.38
75 x 190 x 55	3.170.0656.41	3.170.0656.49
80 x 75 x 75	3.170.0658.01	3.170.0660.12
110 x 75 x 75	3.170.0659.14	3.170.0661.15
120 x 122 x 90	3.170.0656.58	3.170.0656.65
120 x 220 x 90	3.170.0656.72	3.170.0656.80
160 x 75 x 75	3.170.0658.16	3.170.0660.13
160 x 160 x 91	3.170.0656.89	3.170.0656.95
160 x 260 x 91	3.170.0657.02	3.170.0657.11
160 x 360 x 91	3.170.0657.19	3.170.0657.23
160 x 560 x 91	3.170.0657.26	3.170.0657.30

Size mm	Enclosure	
	Polyester	
	grey	black
B x L x T		
190 x 75 x 75	3.170.0658.17	3.170.0660.18
250 x 255 x 120	3.170.0657.33	3.170.0657.45
250 x 255 x 160	3.170.0657.40	3.170.0657.50
250 x 400 x 120	3.170.0657.57	3.170.0657.60
400 x 250 x 160	3.170.0659.25	3.170.0661.28
405 x 400 x 120	3.170.0657.64	3.170.0657.70
405 x 400 x 201	3.170.0658.19	3.170.0660.20
405 x 400 x 165	3.170.0657.79	3.170.0657.86
600 x 250 x 121	3.170.0659.03	3.170.0661.24
600 x 250 x 161	3.170.0658.05	3.170.0660.25

Size mm	Accessories					
	Mounting plate	DIN Rail			Hinges	Fastening lugs
	aus Pertinax	DIN 15	DIN 32	DIN 35	Pair	AISI 304
B x L x T						
75 x 80 x 55	3.170.0577.52	3.170.0578.99				3.170.0572.88
75 x 110 x 55	3.170.0577.69	3.170.0579.05				3.170.0572.88
75 x 160 x 55	3.170.0577.76	3.170.0579.12				3.170.0572.88
75 x 190 x 55	3.170.0577.83	3.170.0579.29				3.170.0572.88
80 x 75 x 75	3.170.0577.01	3.170.0579.33			***	***
110 x 75 x 75	3.170.0577.12	3.170.0579.44			***	***
120 x 122 x 90	3.170.0577.90		3.170.0571.72	3.170.0570.59	3.170.0578.82	3.170.0572.95
120 x 220 x 90	3.170.0578.06		3.170.0571.89	3.170.0570.66	3.170.0578.82	3.170.0572.95
160 x 75 x 75	3.170.0577.23		3.170.0571.45	3.170.0570.12	3.170.0578.82	***
160 x 160 x 91	3.170.0578.13		3.170.0572.02	3.170.0570.80	3.170.0578.82	3.170.0573.01
160 x 260 x 91	3.170.0578.20		3.170.0572.19	3.170.0570.97	3.170.0578.82	3.170.0573.01
160 x 360 x 91	3.170.0578.37		3.170.0580.87	3.170.0579.74	3.170.0578.82	3.170.0573.01
160 x 560 x 91	3.170.0578.44		3.170.0572.26	3.170.0571.03	3.170.0578.82	3.170.0573.01
190 x 75 x 75	3.170.0578.34		3.170.0571.22	3.170.0570.22	3.170.0578.82	***
250 x 255 x 120	3.170.0578.51		3.170.0581.00	3.170.0579.98	3.170.0578.82	3.170.0573.18
250 x 255 x 160	3.170.0578.51		3.170.0581.00	3.170.0579.98	3.170.0578.82	3.170.0573.18
250 x 400 x 120	3.170.0578.68		3.170.0581.17	3.170.0580.01	3.170.0578.82	3.170.0573.18
400 x 250 x 160	3.170.0578.81		3.170.0571.55	3.170.0580.01	3.170.0578.82	***
405 x 400 x 120	3.170.0578.75		3.170.0581.17	3.170.0580.01	3.170.0578.82	3.170.0573.25
405 x 400 x 201	3.170.0577.93		3.170.0571.97	3.170.0580.01	3.170.0578.82	***
405 x 400 x 165	3.170.0578.75		3.170.0581.17	3.170.0580.01	3.170.0578.82	3.170.0573.25
600 x 250 x 121	3.170.0578.89		3.170.0571.01	3.170.0580.12	3.170.0578.82	***
600 x 250 x 161	3.170.0577.99		3.170.0571.12	3.170.0580.12	3.170.0578.82	***

***on request

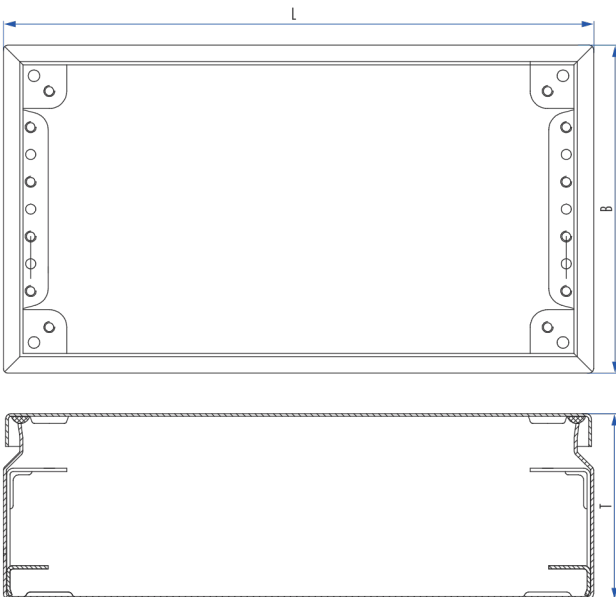
Enclosures made of Steel



The Enclosures are made of grey RAL 7035 powder coated steel, ideally used in terminal boxes. Standard equipment includes a perforated mounting angle to facilitate installation of the mounting plate or DIN rails. This makes it possible to drill access holes for cables anywhere along the sidewalls. A 120 mm (4 3/4") deep Steel Enclosure with mounting flange or with Polycarbonate translucent top will be available upon request.

Technical Informations	Protection according to EN 60529	IP 66
	Impact rating according to EN 50102	IK 08 (-25 °C – 35 °C)
	Temperature range	-30 °C – 80 °C
Material	Bottom	Powder coated Sheet Metal, (DC 01 AM)
	Cover	Powder coated Sheet Metal, (DC 01 AM)
	Cover screws	Stainless Steel
	Gasket for cover screws	Dryflex (SEBS)
	Gasket	PUR (Polyurethane)
Color	Powder coated Sheet Metal Enclosure	grey, RAL 7035
Accessories	Mounting plate	2 mm thick galvanized steel
	DIN Rail	DIN 35

Metal Enclosure



Size mm B x L x T	Enclosure	Accessories	
	Steel	Mounting plate 2 mm thick galvanized steel	DIN Rail DIN 35
150 x 150 x 80	3.180.0798.60	3.180.0573.94	3.180.0568.78
150 x 150 x 120	3.180.0892.03	3.180.0573.94	3.180.0568.78
150 x 300 x 80	3.180.0798.84	3.180.0994.62	3.180.0568.92
150 x 300 x 120	3.180.0892.27	3.180.0994.62	3.180.0568.92
200 x 200 x 80	3.180.0798.77	3.180.0574.17	3.180.0568.85
200 x 200 x 120	3.180.0892.10	3.180.0574.17	3.180.0568.85
200 x 300 x 80	3.180.0798.91	3.180.0994.79	3.180.0568.92
200 x 300 x 120	3.180.0892.34	3.180.0994.79	3.180.0568.92
200 x 400 x 80	3.180.0799.14	3.180.0994.86	3.180.0569.08
200 x 400 x 120	3.180.0892.58	3.180.0994.86	3.180.0569.08
200 x 500 x 120	3.180.0892.89	3.180.0995.09	3.180.0569.15
200 x 600 x 80	3.180.0799.69	3.180.0995.23	3.180.0569.22
200 x 600 x 120	3.180.0893.02	3.180.0995.23	3.180.0569.22
200 x 800 x 120	3.180.0893.33	3.180.0995.54	3.180.0569.39
300 x 300 x 120	3.180.0892.41	3.180.0574.79	3.180.0568.92
300 x 400 x 120	3.180.0892.65	3.180.0994.93	3.180.0569.08
300 x 500 x 120	3.180.0892.96	3.180.0995.16	3.180.0569.15
300 x 600 x 120	3.180.0893.19	3.180.0995.30	3.180.0569.22
400 x 400 x 120	3.180.0892.72	3.180.0575.16	3.180.0569.08
400 x 600 x 120	3.180.0893.26	3.180.0995.47	3.180.0569.22
400 x 800 x 120	3.180.0893.40	3.180.0995.61	3.180.0569.39

Enclosures made of Stainless Steel



These Enclosures are made of AISI 304 Stainless Steel used inter-terminal boxes. We offer acid resistant AISI 316 Stainless Steel solutions upon demand. Standard equipment includes a perforated mounting angle to facilitate installation of the mounting plate or DIN rails. This makes it possible to drill access holes for cables anywhere along the sidewalls.

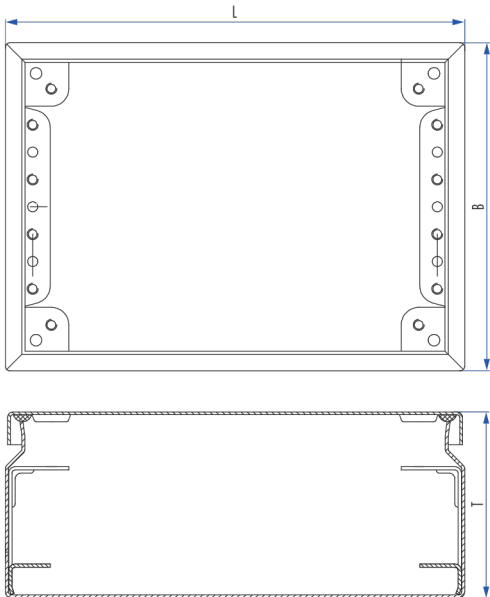
Technical Informations	Protection according to EN 60529	IP 66
	Impact rating according to EN 62262	IK 09 (-25 °C – 35 °C)
	Temperature range	-30 °C – 80 °C

Material	Bottom	Stainless Steel AISI 304 upon request AISI 316
	Cover	Stainless Steel AISI 304 upon request AISI 316
	Cover screws	Stainless Steel
	Gasket for cover screws	Dryflex (SEBS)
	Gasket	PUR (Polyurethane)

Color	Bottom	AISI 304
	Cover	AISI 304

Accessories	Mounting plate	2 mm thick galvanized steel
	DIN Rail	DIN 35

Stainless Steel-Enclosure



Size mm B x L x T	Enclosure		Accessories	
	Stainless Steel		Mounting plate 2 mm thick galvanized steel	DIN Rail DIN 35
	AISI 304			
150 x 150 x 80	3.190.0895.48	3.190.0573.94	3.190.0568.78	
150 x 150 x 120	3.190.0896.92	3.190.0573.94	3.190.0568.78	
150 x 300 x 80	3.190.0895.62	3.190.0994.62	3.190.0568.92	
150 x 300 x 120	3.190.0897.15	3.190.0994.62	3.190.0568.92	
200 x 200 x 80	3.190.0895.55	3.190.0574.17	3.190.0568.85	
200 x 200 x 120	3.190.0897.08	3.190.0574.17	3.190.0568.85	
200 x 300 x 80	3.190.0895.79	3.190.0994.79	3.190.0568.92	
200 x 300 x 120	3.190.0897.22	3.190.0994.79	3.190.0568.92	
200 x 400 x 80	3.190.0895.93	3.190.0994.86	3.190.0569.08	
200 x 400 x 120	3.190.0897.46	3.190.0994.86	3.190.0569.08	
200 x 500 x 120	3.190.0897.77	3.190.0995.09	3.190.0569.15	
200 x 600 x 80	3.190.0896.47	3.190.0995.23	3.190.0569.22	
200 x 600 x 120	3.190.0897.91	3.190.0995.23	3.190.0569.22	
200 x 800 x 120	3.190.0898.21	3.190.0995.54	3.190.0569.39	
300 x 300 x 120	3.190.0897.39	3.190.0574.79	3.190.0568.92	
300 x 400 x 120	3.190.0897.53	3.190.0994.93	3.190.0569.08	
300 x 500 x 120	3.190.0897.84	3.190.0995.16	3.190.0569.15	
300 x 600 x 120	3.190.0898.07	3.190.0995.30	3.190.0569.22	
400 x 400 x 120	3.190.0897.60	3.190.0575.16	3.190.0569.08	
400 x 600 x 120	3.190.0898.14	3.190.0995.47	3.190.0569.22	
400 x 800 x 120	3.190.0898.38	3.190.0995.61	3.190.0569.39	



ALUMINUM EX SERIE

Ex Enclosures made of aluminum die-cast

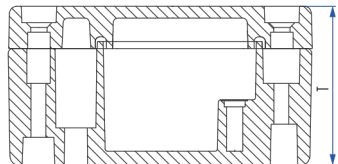
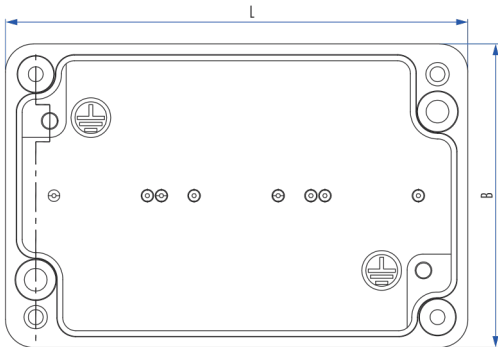


Technical Informations	Material	AISI 12
	Surface	Plain or Powder Coated
	Lid Screw	Stainless Steel, Captive Screw
	Tightning Torque	M 4 (2 to 3) N-m, M 6 (3 to 4) N-m
	Service Temperature	-50 °C to 135 °C
	Mechanical Strength	Accordance with 60079-0, Impact Energy 7 Nm
	Protection Class	EN 60529, IP 66
	Compliance Standard	IEC/EN 60079-0, IEC/EN60079-7 and IEC/EN 60079-31
	Process Control System	ISO 9001:2008, IEC 80079-34:2011
	Standard Color	RAL 7001, 7031, 7032, 7035, 7038, black RAL 9004, white RAL 9010
Internal/External Earthing	4 mm ² to 120 mm ² internal and external	

Aluminum Ex Series

II 2G Ex e IIC Gb
 II 2D Ex tb IIIC Db IP66

IECEx UL 13.0042U



Model Number	Order Number	Size mm B x L x T	Coating		Certification / Conformity					
			Natural	Painted	ATEX	IECEX	UL-508A	UL-50E	CE	IP66
EX-AJB586434-U	EXRJ04	64 x 58 x 34	✓	✓	✓	✓	✓	✓	✓	✓
EX-AJB986434-U	EXRJ02	64 x 98 x 34	✓	✓	✓	✓	✓	✓	✓	✓
EX-AJB1506434-U	EXRJ03	64 x 150 x 34	✓	✓	✓	✓	✓	✓	✓	✓
EX-AJB758057-U	EXRJ05	80 x 75 x 57	✓	✓	✓	✓	✓	✓	✓	✓
EX-AJB1258057-U	EXRJ06	80 x 125 x 57	✓	✓	✓	✓	✓	✓	✓	✓
EX-AJB1758057-U	EXRJ07	80 x 175 x 57	✓	✓	✓	✓	✓	✓	✓	✓
EX-AJB2508054-U	EXRJ08	80 x 250 x 54	✓	✓	✓	✓	✓	✓	✓	✓
EX-AJB10010081-U	EXRJ09	100 x 100 x 81	✓	✓	✓	✓	✓	✓	✓	✓
EX-AJB16010081-U	EXRJ10	100 x 160 x 81	✓	✓	✓	✓	✓	✓	✓	✓
EX-AJB12212081-U	EXRJ11	122 x 120 x 81	✓	✓	✓	✓	✓	✓	✓	✓
EX-AJB22012081-U	EXRJ21	120 x 220 x 81	✓	✓	✓	✓	✓	✓	✓	✓
EX-AJB22012090-U	EXRJ12	120 x 220 x 90	✓	✓	✓	✓	✓	✓	✓	✓
EX-AJB26016090-U	EXRJ13	160 x 260 x 90	✓	✓	✓	✓	✓	✓	✓	✓
EX-AJB36016090-U	EXRJ14	160 x 360 x 90	✓	✓	✓	✓	✓	✓	✓	✓
EX-AJB16016091-U	EXRJ15	160 x 160 x 91	✓	✓	✓	✓	✓	✓	✓	✓
EX-AJB12212091-U	EXRJ22	120 x 120 x 91	✓	✓	✓	✓	✓	✓	✓	✓
EX-AJB28023010-U	EXRJ17	230 x 280 x 110	✓	✓	✓	✓	✓	✓	✓	✓
EX-AJB230200110-U	EXRJ19	200 x 230 x 110	✓	✓	✓	✓	✓	✓	✓	✓
EX-AJB330230110-U	EXRJ18	230 x 330 x 110	✓	✓	✓	✓	✓	✓	✓	✓
EX-AJB330230180-U	EXRJ20	230 x 330 x 180	✓	✓	✓	✓	✓	✓	✓	✓
EX-AJB230200180-U	EXRJ30	200 x 230 x 180	✓	✓	✓	✓	✓	✓	✓	✓

POLYESTER EX SERIE

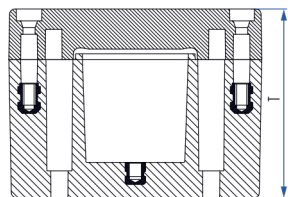
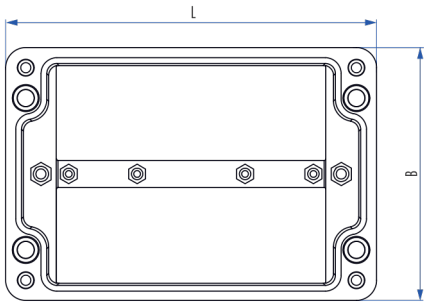
Ex Enclosures made of glass reinforced polyester (GRP)



Technical Informations	Material	Glass reinforced polyester, Graphite added
	Color	Similar to RAL 9011 / black
	Protection Class	IP 66, EN 60529
	Surface resistance	< 10 ⁹ Ohm
	Mechanical Strength	Impact Energy 7 Jules, EN 60079-0
	Flammability	Self Extinguishing, UL 94 V0
	Service Temperature	-50 °C to 100 °C
	Compliance Standard	IEC/EN 60079-0, IEC/EN60079 and IEC/EN 60079-31
	Process Control System	ISO 9001:2008, IEC 80079-34:2011

Polyester Ex Series

- II 2G Ex e IIC Gb
II 2D Ex tb IIIC Db IP66
- IECEx UL 15.0045U
-



Model Number	Size mm			DIN rail		Mounting Plate	Allen Lid Screw	Sealable Lid Screw	Ext. Mounting Bracket	External Hinge	
				TS 15	TS 35						
EX-GRJ01	75	x	80	x	55	✓	-	✓	✓	✓	-
EX-GRJ02	75	x	110	x	55	✓	-	✓	✓	✓	-
EX-GRJ03	120	x	122	x	90	-	✓	✓	✓	✓	✓
EX-GRJ05	75	x	160	x	55	✓	-	✓	✓	✓	-
EX-GRJ06	75	x	160	x	75	✓	-	✓	✓	✓	-
EX-GRJ07	160	x	160	x	90	-	✓	✓	✓	✓	✓
EX-GRJ09	75	x	190	x	55	✓	-	✓	✓	✓	-
EX-GRJ11	120	x	220	x	90	-	✓	✓	✓	✓	✓
EX-GRJ12	250	x	255	x	120	-	✓	✓	✓	✓	✓
EX-GRJ13	160	x	260	x	90	-	✓	✓	✓	✓	✓
EX-GRJ14	160	x	360	x	90	-	✓	✓	✓	✓	✓
EX-GRJ15	250	x	400	x	120	-	✓	✓	✓	✓	✓
EX-GRJ16	405	x	400	x	120	-	✓	✓	✓	✓	✓

Aluminium enclosures with external mounting flanges



Enclosures are made in Aluminium AiSi 12, for installation, circuit breaking, connecting and control of electronic equipments.

Are in conformance with Low Voltage Directive 2006/95/EC and with standards: EN 60670-1, EN 60670-22, EN 62208, NEMA 250.

The enclosures can be mounted by using external flanges or internally through holes.

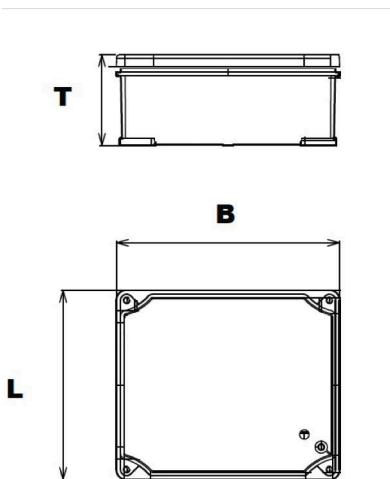
Technical Informations	Protection according to EN 60529	IP 66/IP 67
	Impact rating according to EN 62262	IK 09
	Temperature range	-40 °C – 100 °C

Material	Bottom	Aluminium
	Cover	Aluminium
	Cover screws	Steel, captive
	Gasket	NBR silicon on request (T° -40 + 125°)

Color	Bottom	grey RAL 9006 / Sandblasted Aluminium on request: black RAL 9005 / Grey RAL 7035
	Cover	grey RAL 9006 / Sandblasted Aluminium on request: black RAL 9005 / Grey RAL 7035

Accessories	Mounting plate	1,5 mm thick zinc plated steel
	DIN Rail	DIN 35

Aluminium-Enclosure



Aluminium enclosures with external mounting flanges

External dimension mm	Enclosure Aluminium			Accessories		
	Internal dimension mm	Grey RAL 9006	Sandblasted Aluminium	Mounting plate	DIN Rail 35	
					L	B
B x L x T	B x L x T					
101 x 101 x 58	91 x 91 x 53	3.300.2001.50	3.300.9812.41	3.300.1808.38		
139 x 114 x 62	128 x 103 x 55	3.300.3101.51	3.300.0712.42	3.300.1807.37	3.330.1111.61	
166 x 141 x 64	154 x 129 x 58	3.300.4201.52	3.300.2612.43	3.300.1806.36	3.330.1211.62	3.300.1212.62
166 x 141 x 137	154 x 129 x 131	3.300.5301.53	3.300.3512.44	3.300.1806.36	3.330.1211.62	3.300.1212.62
189 x 167 x 80	178 x 155 x 74	3.300.6401.54	3.300.4412.45	3.300.1804.34	3.300.1411.63	3.300.1412.63
252 x 215 x 91	239 x 202 x 85	3.300.7501.55	3.300.6312.46	3.300.1803.33	3.300.1511.65	3.300.1512.65
307 x 257 x 121	294 x 244 x 114	3.300.8601.56	3.300.7212.47	3.300.1802.32	3.300.1611.66	3.300.1612.66
407 x 313 x 157	392 x 298 x 144	3.300.9701.57	3.300.8112.48	3.300.1801.31	3.300.1711.67	3.300.1712.67

ADDITIONAL ACCESSORIES

SERIE 11

Accessoires	Size mm	Part Number
Hinges		
Pair, polycarbonate	28 x 28 x 10	3.811.0561.44
Cover plugs		
Set, polycarbonate	3 x 18	3.811.0511.49
Pressure balance element		
Pressure balance element, grey, Polyamid	M 12 x 1,5	3.213.1200.50
Locking Nut, grey, Polyamid	M 12 x 1,5	3.262.1200.50
Outside Latches		
Set, polycarbonate	33 x 21 x 9,5	3.811.0511.25
Cover and Mounting Screws		
Mounting screw for mounting plates and DIN rails	3 x 7	3.811.0511.56
Cover screw, TORX	3 x 18	3.811.0512.86
Cover screw, short	3 x 18	3.811.0511.63
Cover screw, long	3 x 50	3.811.0512.79
Cover screws, set incl. 4 cover screws and 4 mounting screws	3 x 18	3.811.0512.93
Cover screws, set incl. 6 cover screws and 4 mounting screws	3 x 18	3.811.0513.09

SERIE 12

Accessoires	Size mm	Part Number
Hinges		
Pair, polycarbonate	28 x 28 x 10	3.812.0561.44
Cover Plugs		
Short, for 25 mm cover, polyethylene	∅ 11 x 12	3.812.0568.47
Long, for 50 mm cover, polyethylene	∅ 12 x 36,5	3.812.0568.54
Short, for 75 mm and 100 mm cover, polyethylene	∅ 11,5 x 12	3.812.0568.61
Threaded Brass Insert for Mounting Plates and PCB Boards		
Threaded brass insert	M2	3.812.0561.68
Brass insert, set incl. 4 pcs.	M2	3.812.0568.30
Outside Latches		
Pair, polycarbonate	15 x 30	3.812.0561.51
Cover- and Mounting Screws		
Cover screw, short, PA	11 x 35	3.812.0561.82
Cover screw, long for 50 mm cover	11 x 60	3.812.0561.99
Wing head part for cover screws	11 x 17	3.812.0548.67
Mounting screw for plates and rails, steel	4 x 8	3.812.0561.75
Set 1, 4 cover screws short and 4 mounting screws	11 x 35	3.812.0549.80
Set 2, 4 cover screws long for 50 mm cover and 4 mounting screws	11 x 60	3.812.0549.97

SERIE 13

Accessoires	Size mm	Part Number
Outside Latches		
Fastening lugs, set	19 x 40 x 35,5	3.813.0647.81
Brass Insert for Mounting Plates and PCB Boards		
Threaded brass insert	M3	3.813.0723.28
Set of threaded inserts (4 pieces)	M3	3.813.0723.35
Self-tapping standoffs		
	Lenght in mm	
4 M5 Steel screws included	15 x 8	3.813.0718.02
4 Spacers included*	15 x 8	3.813.0723.42
4 M5 Steel screws included	20 x 8	3.813.0718.19
4 Spacers included*	20 x 8	3.813.0723.59
4 M5 Steel screws included	30 x 8	3.813.0718.26
4 Spacers included*	30 x 8	3.813.0723.66
		*Set consists of 4 spacers and 4 M5 screws made of steel.
Adjustable Corner Clips for Mounting Plate		
Single corner clip, including M5 screw	19 / 19 x 14	3.813.0647.98
Adjustable corner clips for mounting plate set incl. 4 pcs.	19 / 19 x 14	3.813.0816.96
Cover and Mounting Screws		
Cover screw, slotted / cross head, sealable		3.813.0745.90
Cover screw, slotted / cross head, dark grey made of noryl		3.813.0747.28
Cover screw, slotted / cross head for 600 mm modular cover		3.813.0743.60
Cover screw, spring loaded, cross head		3.813.0730.73
Cover screw, wing head		3.813.0717.62
Cover screw, DIN 3 head		3.813.0717.72
Screws for extension frame	3.813.0748.03	
Mounting screws for plates and rails	3.813.0648.04	
Hinges		
	B x L x H in mm	
Hinges (pair)	40 x 50 x 16,5	3.813.0647.74
Hinges (pair), incl. 2 cover plugs	40 x 50 x 16,5	3.813.0723.04
Outside Latches		
Deckelstopfen, Polyethylen	11 x ø 15 / 17	3.813.0648.11
Key		
Key for DIN 3 head screw	50 x 50	3.813.0724.10
Quick release latches		
Quick release latches (1 pair)		3.813.0647.75
Hinged Cover Screws		
Hinged cover screw, slotted / cross head, blue, polyamide	14 x 96	3.813.0742.47
Hinged cover screw, wing head, blue, polyamide	14 x 113	3.813.0742.54
Pressure balance element		
Pressure balance element, grey, Polyamid	M12 x 1,5	3.213.1200.50
Locking Nut, grey, Polyamid	M12 x 1,5	3.262.1200.50

ADDITIONAL ACCESSORIES

SERIE 13

Accessoires	Dimensions	Part Number
Flanges with Knockouts		
Incl. PUR gasket, 7x PG 11 + 4x PG 9 / 16, PC	F2	3.813.0721.13
Incl. PUR gasket, 2x PG 21 / 29 / 36 + 2x PG 9 / 16 + 1x PG 11, PC	F2	3.813.0723.97
Incl. PUR gasket, 5x PG 16 / 21 + 2x PG 11, PC	F2	3.813.0724.03
Incl. PUR gasket, 7x M 16 + 7x M 12 / 20	F2	3.813.0725.95
Incl. PUR gasket, 2x M 20 / 32 / 50 + 2x M 12 / 20 + 2x M 16	F2	3.813.0726.25
Incl. PUR gasket, 5x M 20 / 32 + 2x M 16 + 1x M 12 / 20	F2	3.813.0727.00
Flanges Accessories		
Extension frame for F2 flanges, PC	50 mm	3.813.0734.48
Self-adhesive flange gasket	F1	3.813.0719.25
Self-adhesive flange gasket	F2	3.813.0720.76
Flange bolt set, F1 size, steel bolt with plastic head	M 6 x 20	3.813.0730.66
Flange bolt set, F2 size, steel bolt with plastic head	M 8 x 20	3.813.0816.89
Flange bolt set, F2 size, steel bolt with plastic head + steel connector	M 8 x 20	3.813.0730.80
Flange base support for size F2, PA	F2	3.813.0721.06
Cover Flanges		
PC / ABS, excluding gasket	F1	3.813.0718.33
PC, incl. PUR gasket	F2	3.813.0719.49
Flanges with Knockouts		
Excluding gasket, 3 x ø 20 mm, PC / ABS	F1	3.813.0526.41
Excluding gasket, 3 x ø 25 mm, PC / ABS	F1	3.813.0526.58
Excluding gasket, 1 x ø 32 mm, PC / ABS	F1	3.813.0526.65
Incl. PUR-gasket, 3 x PG 21 + 4 x PG 16, PC 3x PG 21 + 4x PG 16, PC	F2	3.813.0719.56
Incl. PUR-gasket, 2x PG 29 + 6x PG 16, PC	F2	3.813.0719.63
Incl. PUR-gasket, 2x PG 36 + 4x PG 16, PC	F2	3.813.0719.70
Incl. PUR-gasket, 8x PG 16, PC	F2	3.813.0719.87
Incl. PUR-gasket, 10x PG 11, PC	F2	3.813.0719.94
Incl. PUR-gasket, 4x M 20 + 1x M 25 + 2x M 32, PC	F2	3.813.0526.72
Incl. PUR-gasket, 6x M 20 + 1x M 32 + 2x M 40, PC	F2	3.813.0526.89
Incl. PUR-gasket, 4x M 20 + 2x M 40, PC	F2	3.813.0526.96
Incl. PUR-gasket, 8x M 20, PC	F2	3.813.0527.02
Incl. PUR-gasket, 10x M 16, PC	F2	3.813.0527.19
Flanges with Knockouts and Membrane Knockouts		
For 5x ø7 – 30 mm cables, EPDM	F1	3.813.0718.71
For 25x ø5 – 26 mm cables, EPDM	F2	3.813.0720.07
For 35x ø5 – 26 mm cables, EPDM	F2	3.813.0720.14
For 3x ø24 – 60 mm cables, EPDM	F2	3.813.0720.21
Excluding gasket, 3x ø21 mm + 4x ø15 mm, TPE	F1	3.813.0718.88
Excluding gasket, 4x ø16 mm + 6x ø13 mm, TPE	F1	3.813.0718.95
Excluding gasket, 3x ø30 mm + 6x ø18 mm + 16x ø14 mm, TPE	F2	3.813.0720.38
Excluding gasket, 9x ø18 mm + 24x ø14 mm, TPE	F2	3.813.0720.45

A set of screws will be required when ordering a flange.

SERIE 14

Accessoires	Dimensions mm		Part Number
Outside Latches			
Fastening lugs, set	19 x 40 x 35,5		3.814.0647.81
Adjustable Corner Clips for Mounting Plate			
Single corner clip, including M5 screw	M3	3.813.0723.28	
Adjustable corner clips for mounting plate set incl. 4 pcs.	M3	3.813.0723.35	
Self-tapping standoffs			
	Length in mm		
4 M5 Steel screws included	15 x 8	3.813.0718.02	
4 Spacers included*	15 x 8	3.813.0723.42	
4 M5 Steel screws included	20 x 8	3.813.0718.19	
4 Spacers included*	20 x 8	3.813.0723.59	
4 M5 Steel screws included	30 x 8	3.813.0718.26	
4 Spacers included*	30 x 8	3.813.0723.66	
*Set consists of 4 spacers and 4 M5 screws made of steel.			
Adjustable Corner Clips for Mounting Plate			
Single corner clip, including M5 screw	19 / 19 x 14	3.814.0647.98	
Adjustable corner clips for mounting plate set incl. 4 pcs.	19 / 19 x 14	3.814.0816.96	
Cover Screws			
Cover screws, slotted / cross head, sealable		3.814.0745.90	
Cover screws, slotted / cross head, dark grey made of noryl		3.814.0747.28	
Cover screws, slotted / cross head for 600 mm modular cover		3.814.0743.60	
Cover screws, spring loaded, cross head		3.814.0730.73	
Cover screws, wing head		3.814.0717.62	
Cover screws, DIN 3 head		3.814.0717.72	
Screws for extension frame		3.814.0748.03	
Mounting screws for plates and rails		3.814.0648.04	
Hinges			
	B x L x H in mm		
Hinges (pair)	40 x 50 x 16,5	3.814.0647.74	
Hinges (pair), incl. 2 cover plugs	40 x 50 x 16,5	3.814.0723.04	
Cover Plugs			
Cover plugs, polyethylene	11 x Ø 15 / 17	3.814.0648.11	
Key			
Key for DIN 3 head screw	50 x 50	3.814.0724.10	
Quick release latches			
Quick release latches (1 pair)		3.814.0647.75	
Pressure balance element			
Pressure balance element, grey, Polyamid	M 12 x 1,5	3.213.1200.50	
Locking Nut, grey, Polyamid	M 12 x 1,5	3.262.1200.50	

TECHNICAL INFORMATIONS

Material Properties

	Weak acid	Concentrated acid	Weak caustic solution	Concentrated caustic solution	Alcohol	Gasoline	Benzol	Mineral oil	Diesel	Ammonia	Vegetable fat	Animal fat	Free of halogen, heavy metal, PVC and silicone	Flame resistant per VDE 0471 / EN 60695 / UL 94	Max. ambient temperature (short term expose 1 hr. max)	Max. ambient temperature (continuous exposure)
ABS, Impact resistant	○	/	●	●	●	/	/	○	/	●	○	○	yes	650 °C / HB	80 °C	-40 °C – 70 °C
Polycarbonate, Fiberglass reinforced	○	/	/	/	●	●	/	●	○	/	●	●	yes	960 °C / V-2	130 °C	-35 °C – 120 °C
Polycarbonate, transparent	○	/	/	/	○	○	/	●	○	/	●	●	yes	850 °C / V-2	130 °C	-35 °C – 120 °C
Polyethylene	●	●	●	●	●	○	/	○	○	●	●	●	yes	650 °C / V-2	100 °C	-40 °C – 70 °C
Polypropylene	●	○	●	○	●	○	○	●	○	●	●	●	yes	960 °C / V-2	120 °C	-30 °C – 100 °C
Polypropylene, Halogen free	●	○	●	○	●	○	○	●	○	●	●	●	yes	960 °C / V-2	120 °C	-30 °C – 100 °C
Polypropylene Copolymer	●	○	●	○	●	○	○	○	●	●	●	●	yes	650 °C / HB	120 °C	-30 °C – 100 °C
Polyurethane	○	○	○	○	○	○	○	●	○	○	●	●	yes	650 °C / -	110 °C	-35 °C – 80 °C
Aluminium AL 12 Si	●	○	●	●	○	●	/	●	●	●	○	○	yes	-	130 °C	-40 °C – 100 °C
Polyester, Fiberglass reinforced	○	/	○	/	●	●	●	●	●	●	●	●	yes	960 °C / V-0	120 °C	-40 °C – 100 °C
Polyamide (Nylon) 6, Fiberglass reinforced	●	○	●	●	●	●	○	●	●	●	○	○	yes	750 °C / HB	200 °C	-30 °C – 100 °C
Thermoplastic Elastomer	●	○	●	○	●	○	○	○	○	○	●	●	yes	750 °C / HB	110 °C	-30 °C – 80 °C

● compatible ○ limited compatibility / incompatible

	Polycarbonate	ABS	Polyester	Aluminium	Stainless steel AISI 304	Stainless steel AISI 316	Powder Coated Steel
Outdoors	●●●●	●●	●●●●●	●●●●	●●●●●	●●●●●	●●●●
Indoors	●●●●●	●●●●●	●●●●●	●●●●●	●●●●●	●●●●●	●●●●●
Cost	●●●●	●●●●●	●●	●●	●	●	●●
Light weight	●●●●●	●●●●●	●●	●	●	●	●
High stiffness	●●●	●●	●●●●	●●●●	●●●●●	●●●●●	●●●●●
Impact resistance	●●●●	●●	●●●●	●●●●	●●●●●	●●●●●	●●●●●
UV resistance	●●●●	●	●●●●	●●●●●	●●●●●	●●●●●	●●●●●
Temperature range	●●●●	●●	●●●●	●●●●	●●●●	●●●●	●●●●
Easy of machining	●●●●●	●●●●●	●	●	●	●	●●
Insulation resistance	●●●●●	●●●●●	●●●●	K/A	K/A	K/A	K/A
Flame proof	●●●●	●	●	●●●●	●●●●●	●●●●●	●●●●●
Resistant to Solvents	●	●	●●●●	●●●●●	●●●●●	●●●●●	●
Resistant to Gasoline	●●●	●	●●●●	●●●●	●●●●●	●●●●●	●
Resistant to Hydraulic Fluids	●●●●●	●●●●●	●●●●	●●●●	●●●●●	●●●●●	●●
Resistant to Alcohol	●●●●	●●●	●●●●	●●●●	●●●●●	●●●●●	●●
Resistant to Alkalis	●●	●●●●●	●●●●	●	●●●●●	●●●●●	●
Resistant to Acids	●●●	●●	●●●	●	●●●●	●●●●	●

●●●●● Excellent ●●●● / ●●● Good ●● Mediocre ● Bad K/A not available

Polycarbonat (PC)

+ High impact resistance	- Because of the fibreglass used, achieving the correct color shade maybe difficult
+ High degree of protection	
+ Light weight	
+ Good resistance to chemicals	
+ Wide temperature range	
+ Self-extinguishing	
+ Easily machined using standard tools	
+ Excellent insulation properties	
+ Also suitable for outdoor use	
+ Also available with clear cover	

Acryl-Butadien-Styrol (ABS)

+ Cost-effective	- Lower impact resistance than that of polycarbonate
+ Light weight	- Narrower temperature-resistance range than polycarbonate
+ Good chemical resistance	- Low UV radiation resistance
+ Easy to machine using standard tools	- Not suitable for outdoor use
	- Not self-extinguishing

Polyester (GRP, glass-reinforced-polyester)

+ Excellent temperature resistance	- Machining problematic
+ Excellent impact resistance	- Non-recyclable material
+ Good corrosion resistance	
+ Good resistance against solvents	
+ Suitability for highly demanding industrial environments	

Limited Liability

Products, design, colors and dimensions are subject to change without prior notice. We reserve the right to make technical improvements on all our products, currently ordered or for future orders. It is the user's responsibility to verify all dimensions and technical data. HUMMEL AG will assume no liability regarding information provided to the user by published literature or inside technical staff, its distributors and outside sales personnel. Errors in the catalog can occur and shall not create any liability whatsoever for HUMMEL AG. All information provided by HUMMEL AG is without guarantee and must be verified by the user.

Aluminium (AL)

+ Lighter than steel	- Restricted max. Size
+ High impact resistance	
+ Good resistance against solvents	
+ Wide temperature resistance range	
+ a good corrosion resistance by overcoding	

Powder Coated Steel (DC01 AM)

+ High impact resistance	- Corrosion risk
+ High degree of protection	
+ Easy to customize; special dimensions possible	

Stainless Steel (AISI 304)

+ High impact resistance	- Customizing more difficult than with painted steel
+ High degree of protection	
+ Excellent corrosion resistance	
+ Excellent resistance to UV radiation	
+ Suitable for outdoor use; canopy for rain is recommended	
+ Suitable for industrial environments	
+ Excellent suitability for e.g. the food industry	

Acid-Proof Steel (AISI 316)

As AISI 304, also:	- Customizing more difficult than with painted steel
+ Extremely high resistance to corrosion	
+ Excellent suitability for off-shore industry	
+ Excellent suitability for paper industry	

Protection ratings and approvals

International Protection, EN 60529

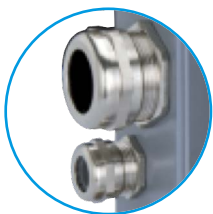
1. Code		2. Code	Penetration of water								
Protection against human access to hazardous parts	Protection of equipment against penetration of solid foreign objects		Non-protected	protection against drip water (order dripping water)	Protected against vertically falling water drops when device is tilted up to 15°	Water sprayed at an angle up to 60° on either side of the vertical shall have no harmful effects	Water splashed from any direction shall have no harmful effects	Water projected in jets from any direction shall have no harmful effects	Water projected in powerful jets from any direction shall have no harmful effects	protection against temporary submersion	protection against permanent submersion
			IP x0	IP x1	IP x2	IP x3	IP x4	IP x5	IP x6	IP x7	IP x8
Non-protected	Non-protected	IP 0x	IP 00								
Protected against access to hazardous parts with the back of the hand	Protected against solid foreign objects larger in diameter than 50 mm	IP 1x	IP 10	IP 11	IP 12						
Protected against access to hazardous parts with a finger	Protected against solid foreign object larger in diameter than 12,5 mm	IP 2x	IP 20	IP 21	IP 22	IP 23					
Protected against access to hazardous parts with a tool larger in diameter than 25 mm	Protected against solid foreign objects larger in diameter than 2,5 mm	IP 3x	IP 30	IP 31	IP 32	IP 33	IP 34				
Protected against access to hazardous parts with a wire larger in diameter than 1,0 mm	Protected against solid foreign objects larger in diameter than 1 mm	IP 4x	IP 40	IP 41	IP 42	IP 43	IP 44				
Protected against access to hazardous parts with a wire larger in diameter than 1,0 mm	Prevents penetration of dust sufficient to cause damage inside the equipment.	IP 5x	IP 50				IP 54	IP 55			
Protected against access to hazardous parts with a wire larger in diameter than 1,0 mm	Dust proof	IP 6x	IP 60					IP 65	IP 66	IP 67	IP 68

Approvals available on request

	Serie 11		Serie 12		Serie 13		Serie 14	Serie 15	Serie 17	Serie 18	Serie 19
Material	PC	ABS	PC	ABS	PC	ABS	PC	AL	GRP	ST	ES
SGS FIMO EN 62208	■	■	■	■	■	■	■				■
UL	■		■		■		■	■	■		
cUL	■		■		■		■		■		
GOST R	■	■	■	■	■	■	■			■	■
Germanischer Lloyd	■		■		■		■	■	■	■	■
ATEX								■	■		■
EAC										■	■

We design and equip Enclosures for you

As manufacturer of electric and electronic components and cable connections we can assemble your customized enclosures with our products. Furthermore, we equip enclosures to your convenience with any typical electrical parts from the electronic industry, from well-known German brand manufacturers. Convince yourself of the quality of our products:



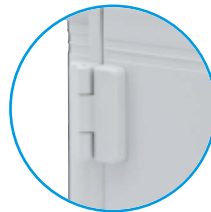
- // Cable Glands
- // Corrugated Conduit
- // Pressure balance element



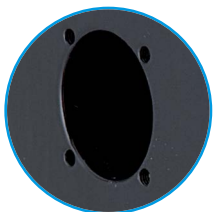
- // DIN-Rails
- // Mounting Plates



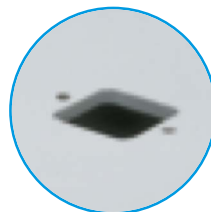
- // Circular Connectors



- // Hinges
- // Latches
- // Quick release latches



- // Thru-holes
- // Thread-holes



- // Accessories
- // Third party components customer supplied



ELECTRIC COMPONENTS

Cable Glands

Polyamide-, Brass- and Stainless steel,
EMC-connections, Ex e-, Ex d-, Ex ta-Cable Glands



Circular Connectors

M 8 to M 40, INOX, TWILOCK, Industrial Ethernet,
Power, Signal, Hybrid-Connector, Moulded Cordsets



Industrial Enclosures

Enclosures made of PC, Polyester, Aluminium and Stainless Steel,
Customized Systems, Enclosure-Configurator



Cable Protection Systems

Corrugated Conduit Systems, Conduit Cable Glands, Angled Systems,
combined Cable Glands, Accessories



Cable Assembly

Moulded Signal- and Power Circular Connectors,
Servo Cables, Cable Sets



www.hummel.com

HUMMEL S.r.l.
Via Enrico Fermi, 61
10091 Alpignano (Torino) /
Italy
www.hummelsrl.it

Tel. +39 (0) 11 / 9 68 26 38
Fax +39 (0) 11 / 9 78 55 50
E-Mail info.it@hummel.com

