

# ST

STONE WORKS



CLIENT CASE STUDIES & LOOK BOOK



# A BIT ABOUT US...

---

ST Stoneworks was founded by husband and wife Steve and Tina in 2014. After moving from London to settle in peaceful Suffolk, they launched their first factory and have since built a business that prides itself on delivering some of the UK's finest stonework projects. Leaving school at 14, Steve ventured straight into the world of marble and granite, landing a job with one of London's most established stone companies, where he was expertly trained by some of Italy's most renowned artisan stone masons. From that point, Steve's one and only goal was owning his own factory and creating a UK leading stone company.

Steve and Tina are a dynamic couple with a singular goal to deliver excellent results for their clients on every project. Thus, the company, ST Stoneworks, is named for its creators, who proudly put their name to every project they undertake.



# HOTEL CLIENTS

## PILGRIM HOTEL

PADDINGTON

No of rooms. 73

We undertook the tiling and stone works packages in the bathrooms and public areas, removed the old original fireplace and restored in our factory before re-installing it.



STYLED TO PERFECTION



## LONDON CURIO COLLECTION BY HILTON

CANARY WHARF

### MATERIAL USED

Caesarstone raw concrete to spiral staircase with inset brass tread. 20mm Arabescato Marble and black granite with rock face finish to reception desk.







## ANDAZ HOTEL

### LIVERPOOL STREET LONDON

No. of rooms 267 and main reception.

We surveyed, manufactured, installed the Caesarstone minibars and had a special individual print made for each floor to tell the story of the History of the building and surrounding area. We also undertook the tiling of all bathrooms as well as manufacturing, printing and installing the stonework to the niches and thresholds throughout the building.

#### MATERIAL USED

Caesarstone raw concrete (printed). Nero Assoluto granite, Nero Marquina marble, metro tiles and porcelain floor tiles. Reception: brick slips, hand made tiles and black granite to tops throughout.







## HAMPTON BY HILTON

### PARK ROYAL

We templated, manufactured and installed the bar and reception area, hot and cold buffet areas and cereal bars.

#### MATERIAL USED

20mm/30mm Silestone Kensho with a 20x20 v groove edge detail.



# BARS & RESTAURANTS PROJECTS

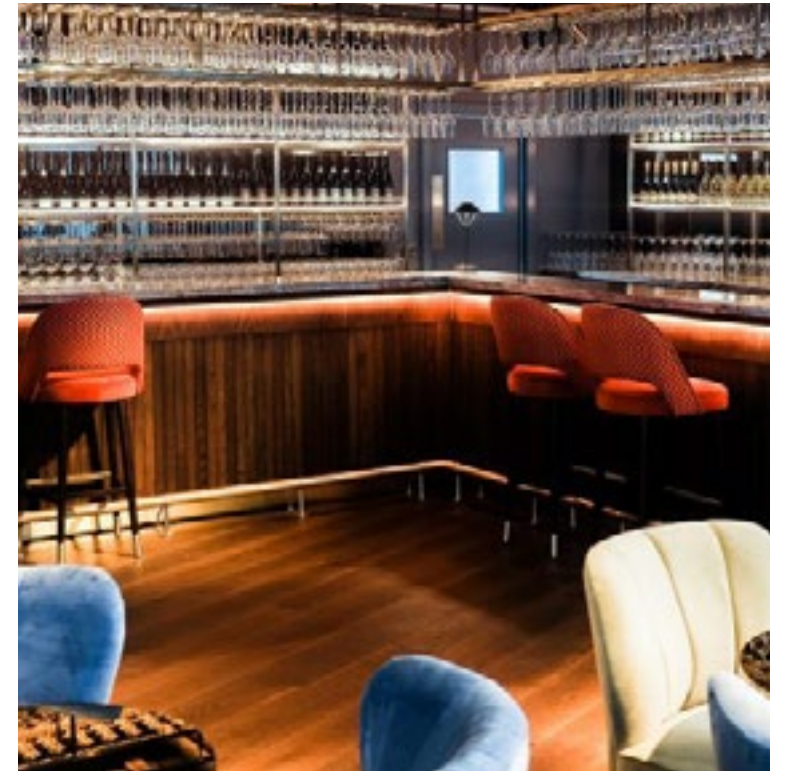
## PROSECCO HOUSE

### TOWER BRIDGE, LONDON

After visiting a few stone importers with the owner of the bar, we found the perfect stone for her project. We tiled the w/c with green hand made tiles and finished with brass trims, whilst the floor was laid in Carrara marble mosaics. Kashmir Lime granite was fitted to the bar and back bar with a 20x20 edge detail.

#### MATERIAL USED

Green hand made tiles, Carrara marble mosaic, 20mm Cashmere Lime granite.







# COTE BRASSERIE

OLD JEWRY, BANK, LONDON

The old window facing on to the street was cut out and a new entrance with steps to the restaurant was created using materials sourced to match the original, including Portland stone and Baltic Brown granite. Inside we used a variety of finishes including handcrafted and painted floor tiles, Carrara marble tiles and handmade crackle glazed tiles.

## MATERIAL USED

Handmade tiles, Baltic Brown granite, Portland stone, Carrara marble, brick slips.



# GORDON RAMSAY LUCKY CAT

GROSVENER SQUARE

Following our survey, the old stone steps were removed and new steps created, crafted from Travertino Classico, a material particularly suited to both interior and exterior flooring.

## MATERIAL USED

Travertino Classico







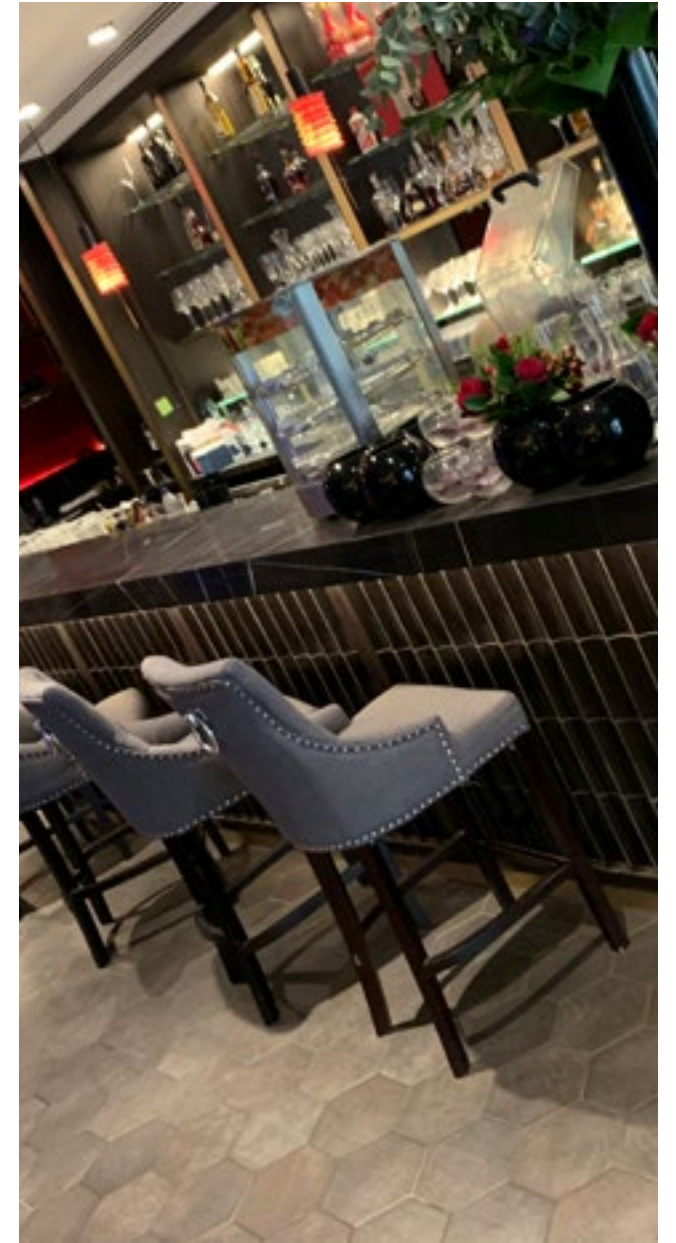
## ROYAL CHINA

### BAKER STREET LONDON

The main bar, back bar and waiter stations were envisioned in striking Sahara Noir marble and created with a 150mm vein-matched mitred front edge detail. We used Calacatta Oro marble vanity tops throughout the male and female w/c's whilst the front elevation of the restaurant was completely restored including cladding the columns with Belgian Blue limestone.

#### MATERIAL USED

Travertino Classico, Sahara Noir marble, Calacatta Oro marble, Belgian Blue limestone.





# KITCHEN PROJECTS

St Stone works with all size developers and have completed projects ranging from 5 -10 units all the way up to 350 units. We are extremely competitive and offer a great service which keeps our developers coming back to us for future sites. Please contact us for contract kitchen pricing for a future development.



## PELDON, ESSEX

Our client was very specific with the material they wanted for there worktops so we visited 3 granite suppliers to locate the perfect slabs for this beautiful handmade kitchen.

### KITCHEN SUPPLIER

Blackstone Kitchens

### MATERIAL USED

30mm Bianco Antico

## SUDBURY, SUFFOLK

Our client was unsure about the colour of worktops she wanted so she came to our showroom with her cupboard door, floor tile and paint colour and we found her the perfect match to bring all her colours together.

### KITCHEN SUPPLIER

Howdens

### MATERIAL USED

20mm Silestone Pearl Jasmine



## WALTON ON THE NAZE, ESSEX

We fitted this for one of the studios we work closely with: a timeless colour combination, full height splashbacks and a huge double sink with fluted draining grooves.

### MATERIAL USED

30mm ST Quartz







## KITCHEN STUDIO, SUFFOLK

One of our clients offers exceptional handmade kitchens. To complement his work we created custom worktops which included fluted draining grooves and a beautiful double bevel edge detail.

**MATERIAL USED**  
30mm ST quartz



## PROPERTY DEVELOPER (ROYSTON BASED)

We manufactured and fitted this kitchen worktop with a huge 4200mm island, vein matched 80mm downstands to give it a “block look”, mitred leg to the floor and we vein matched the upstands to the rest of the kitchen with the same front edge detail.

**MATERIAL USED**  
20mm ST Statuario Quartz

## KITCHEN STUDIO, ESSEX

We manufactured and installed this granite worktop and a floating quartz table top with a mitred leg to the floor.

**MATERIAL USED**  
Sensa 30mm colonial white and 20mm Eternal Statuario.





## KITCHEN STUDIO, COLCHESTER, ESSEX

We templated, manufactured and fitted this worktop in record time for one of our customers, with a double bevel edge, two sets of fluted draining grooves and a mitred end panel to the floor.

### MATERIAL USED

ST white glitter quartz



# OUR SUPPLIERS





# OUR PROMISE

---

At ST Stoneworks we care about two things, creating beautiful stone masonry and you, our valued customers. Working together for many years, our team of caring office staff, time-served stone masons and expert CNC operators consistently deliver outstanding results for our customers. With the whole team striving each day to further improve our service, we know that ST Stoneworks will deliver the right results for you.

**We hope that you enjoy browsing through this portfolio of our work and that it will allow you to gain a sense of the quality of our work. To discuss your project with us please call us on 01787 464 016.**





**VISIT US IN STORE**

UNIT B & C WOODHALL HOUSE,  
WOODHALL BUSINESS PARK,  
SUDBURY, SUFFOLK,  
CO10 1WH

**GET IN TOUCH**

01787 464 016  
INFO@STSTONEWORKSLTD.CO.UK  
WWW.STSTONEWORKS.CO.UK

