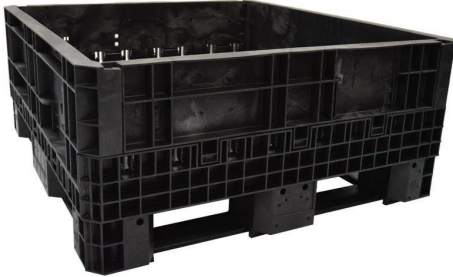


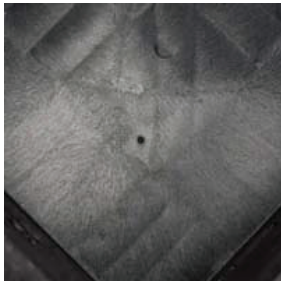
## 45 x 48 x 21 Fixed Wall Bulk Container



The DuraGreen 45" x 48" x 21" fixed wall containers are medium-duty material handling containers engineered with fixed walls. The DuraGreen 45" x 48" x 21" fixed wall is innovatively designed with a flat deck that provides a more stable surface. The DuraGreen 45" x 48" x 21" fixed wall bulk container provides stability with the periphery design of the containers runners, eliminating the need for a center foot. Made from high-density polyethylene, these 1,300 lbs. capacity fixed wall bulk containers come equipped with a solid base and four drainage holes. The 48" x 45" footprint and 21" height container is built for stacking ease and maximization of truck volume. With a pallet jack and 4-way forklift access for secure and efficient handling.

Part # DGA454821-FW

### Special Features



#### Corner Drain Holes

Drain holes strategically placed in the interior corners of this solid bottom container keep liquids from pooling.



#### Solid Floor

A solid floor bottom ensures small parts will not be lost and provides a smooth and even load surface.



#### Fixed Sidewalls

High Strength fixed sidewalls make this container ideal for heavy loads and flowable powder storage.

### Product Specifications

Dimensions	in.	Capacity		Shipping		Features	
Exterior Height	21	Internal Volume (cu. ft.)	14.61	53' Trailer Load	130	Drop Doors	0
Exterior Width	45	Weight Capacity (lbs.)	1300	53' Trailer Collapsed	N/A	Door Height	N/A
Exterior Length	48	Static Loading	6	Fork Opening Short	10.5x4.5	Door Width	N/A
Interior Height	14.68	Dynamic Load Stack	3	Fork Opening Long	11x4.5	Ventilation	None
Interior Width	41.50	Max. Stack Weight	N/A	Fork Lift Entry	4	Approvals	N/A
Interior Length	44.50	Floor Type	Solid	Weight	82.50	Optional Lid	DG4548-L
Collapsed Height	N/A					Brand	DuraGreen

RPP Containers® warrants its containers for proper fit, form and function for a period of one year from date of shipment by RPP Containers. If within such period a container is proven to be defective in functionality from manufacturing defects, such product shall be repaired or replaced. This warranty does not include damage due to normal material handling methods (i.e., forklift damage etc.). Customer is responsible for all freight charges.