



ISLAMIC FAMILY
& SOCIAL SERVICES
ASSOCIATION

A Fresh Start

What We Heard

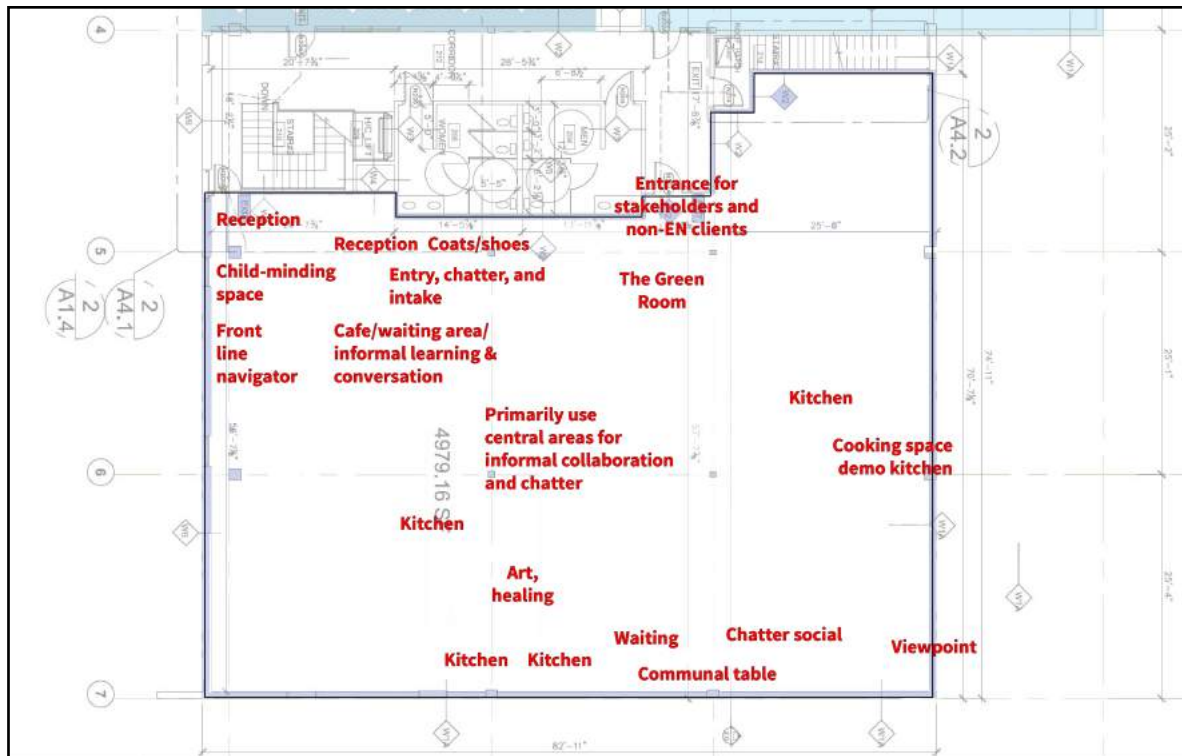
Workshop - Mapping the Three C's Spaces and Creating a Flow
Jan 12, 2021 5:30pm-7:30pm

Thank you for participating in our second workshop for imagining IFSSA's future! We received a plethora of responses and feedback from you all and were stunned by the level of engagement and interest in this important project. Below is a review of *What We Heard*. For another look at the Miro Board click [here](#).

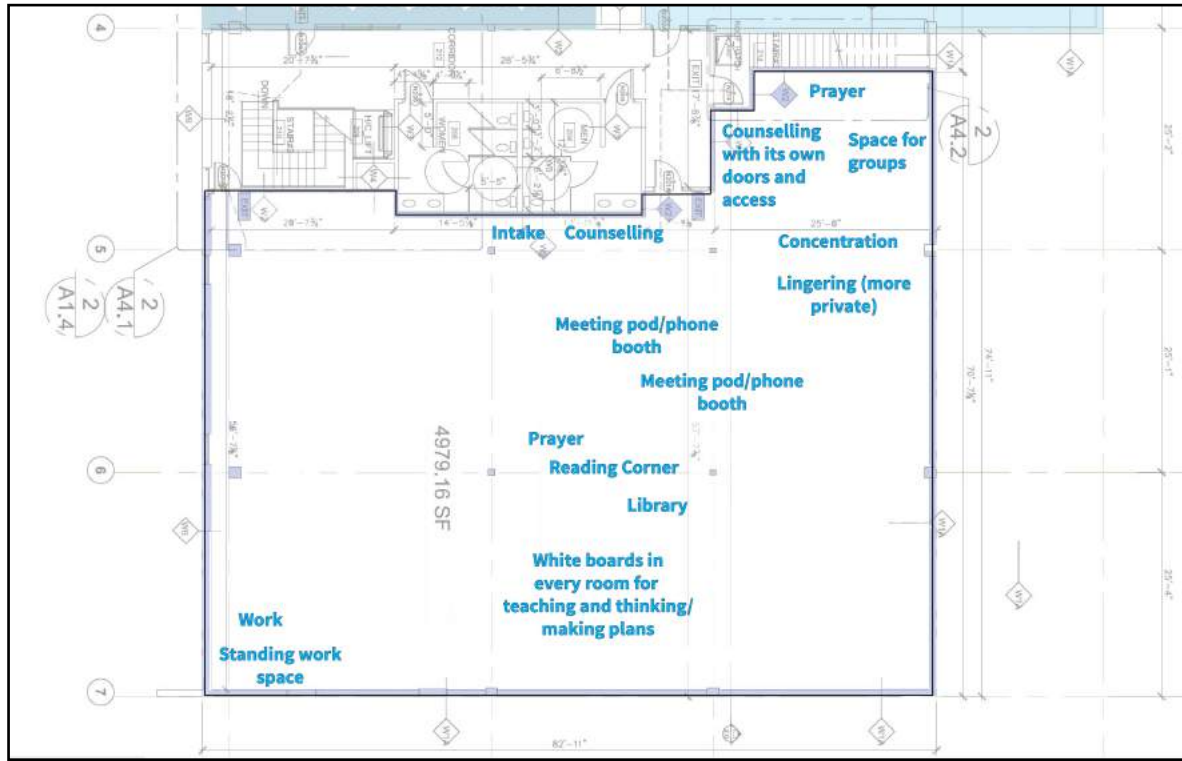
Participants

- Shafraaz
- Hamza
- IFSSA Staff
- IFSSA Board

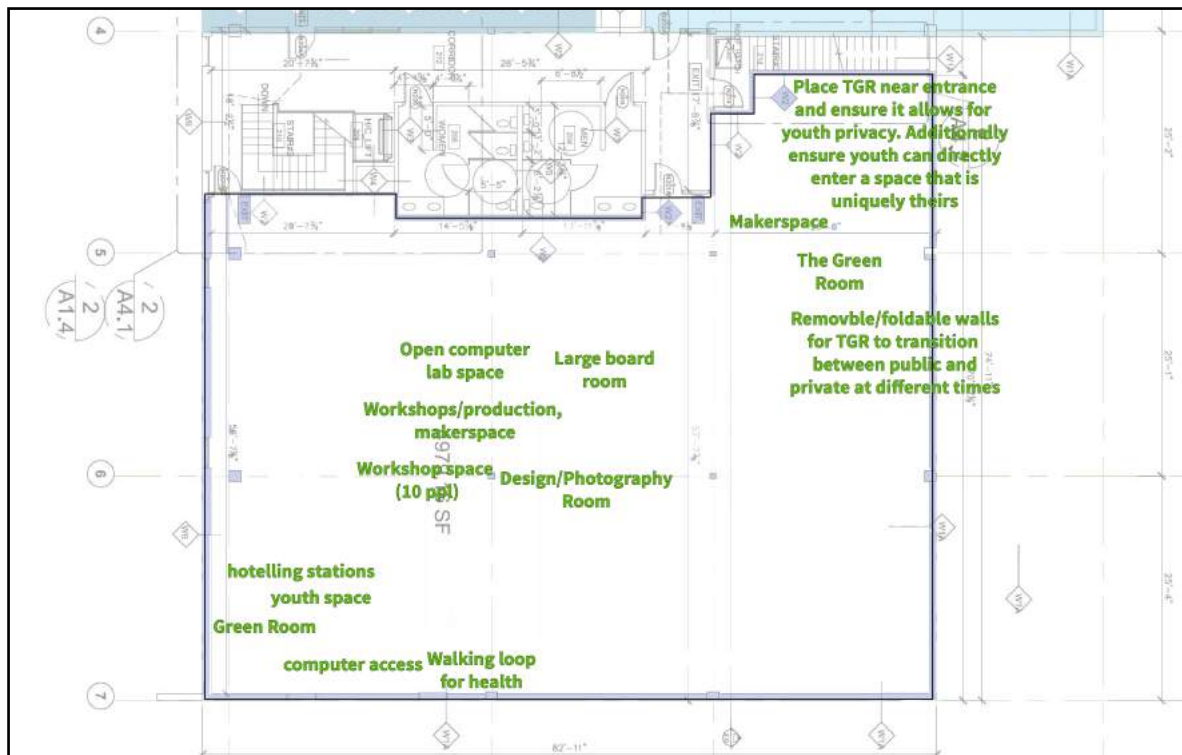
Chatter Space



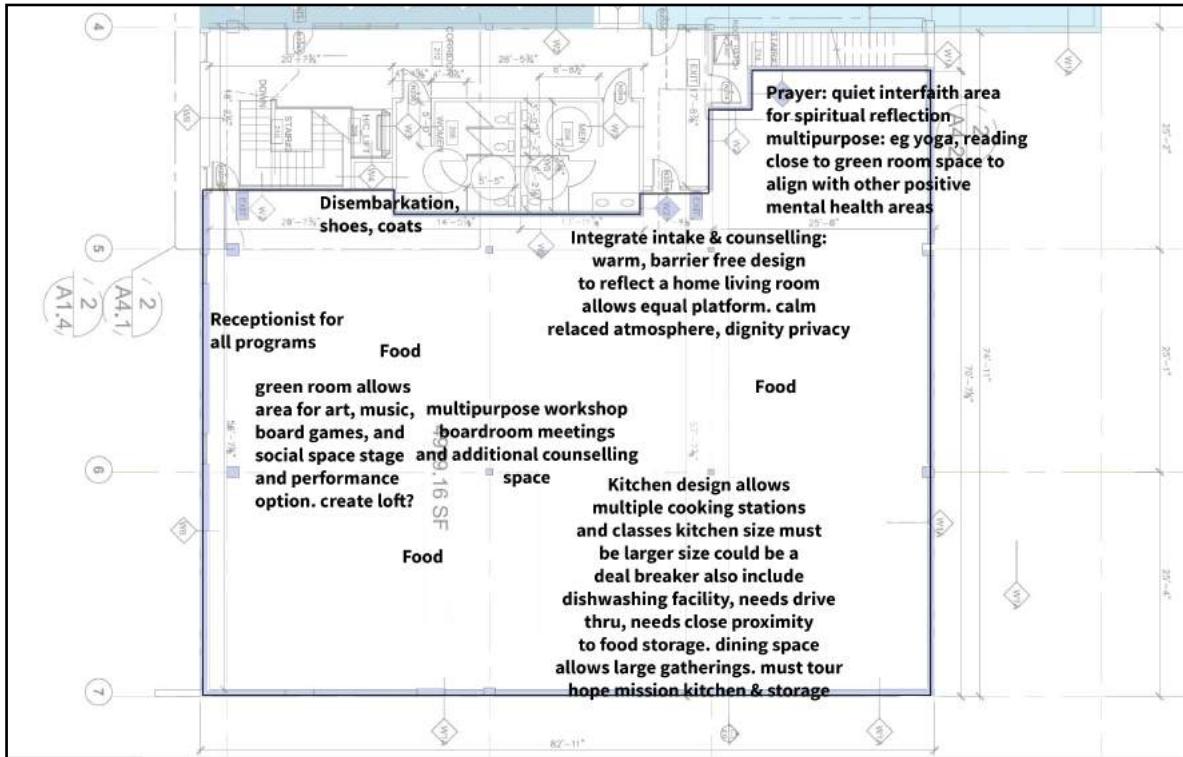
Concentration Space



Collaboration Space



Other Ideas



- We loveeee idea paint!
- Love the plants!
- Intake space in the warehouse near/around the small door perhaps? For that transportation accommodation
- This would work well with Ishmal's ticket/entry specific idea: <https://envoy.com>
- I have a quick thought about having private spaces that are facing the glass possible. So people are getting privacy from the rest of the space but at the same time not feeling boxed in by having a chance to have the sun shine into the room.
- I think it would be nice to be near the entrance so youth feel like they're directly accessing a space for them
- The second entrance (north) would be super helpful to access the Green Room
- Hotelling stations in open collaboration areas for computer access
- I agree that the Green Room has its own entrance in the back and the essential needs and outreach have their own private access up at the front of the building
- Disembarkation: the action of leaving a ship or aircraft after a journey
- It feels natural to let the central areas be more collaborative and informal, also the cafe/kitchen spaces
- Also prayer space should perhaps be in close proximity to both the private sides of the building as well as the Green Room - that way everyone, no matter their purpose at IFSSA can come pray together centrally

- Because time acts as a natural division of space, maybe the walls for TGR can be removable and flexible to allow for the space to transition between public and private
- Personally, I feel like I'm imaging the building in thirds. The third closest to the doors is private, for clients, the middle this is that joint, informal, casual space, and then the back third would have the offices and board meetings rooms and such
- Would the clients be able to access the prayer room?
- I think prayer would be good in that middle third where we have the joint informal space
- As well, just adding on to the comment about the 10 people conference room - there have been times when a room with an even higher capacity (4-5 families worth) was needs to conduct interviews with newcomers - maybe somewhere in the space there is a large conference room as well
- Some reception lobby areas have TVs
- Playing programs and stuff
- Or a (digitally pleasing, not mall vibes) map

Warehouse Ideas

