

# ACOUSTIC INSULATION

[www.thermotec.com.au](http://www.thermotec.com.au)

GREEN STAR  
COMPLIANT

**Domestic  
Commercial  
Industrial**

 **thermotec**  
australia pty ltd.



Made in Australia



# THE COMPANY

Thermotec Australia Pty Ltd was established in 1987 and has since become a leading Australian manufacturer of low density polyethylene foam products used in building, construction and O.E.M markets.

Thermotec's products are specified both internationally and domestically and the company is proud of it's achievements in supplying thermal and acoustic insulation products to major projects internationally.

- **Thermotec Pipe Insulation** Quick Seal, Sealed Tube and 4-Zero closed cell insulation for pipes to save energy on both hot and cold water services.
- **Foam Sheet** Quick and easy insulation for tanks, equipment, large diameter piping.
- **DuctWrap** 4 Zero fire performance insulation for air conditioning ductwork.
- **Rooftherm** Semi rigid insulation batts fixed to underside of roof to reduce heat build up.

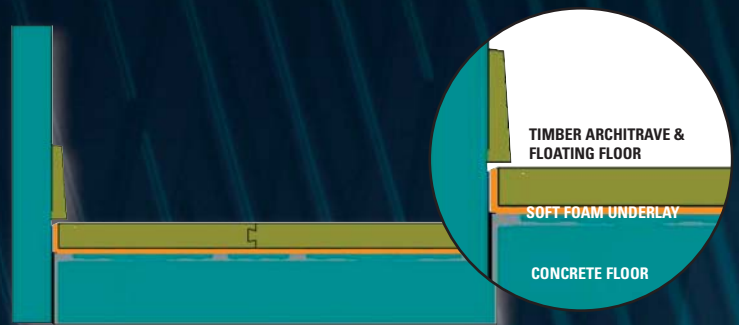
## ACOUSTIC INSULATION

The **NuWave** range is based on high density, limp mass polymers to take the energy out of sound waves...right across the hearing frequency spectrum.

**NuWave** barriers are flexible, inexpensive and can tame home theatre systems, aircraft noise, impact noise through walls and floors and engine noise.

## NUWAVE HIGH PERFORMANCE FLEXIBLE NOISE BARRIER

The heart of the **NuWave** range is the dense polymer technology that has been proven to reduce noise in heavy industrial plants as well as commercial and domestic applications. We have taken this technology and applied it to many of our products but the two most common are **NuWave "Base"** and **NuWave "4Zero"**



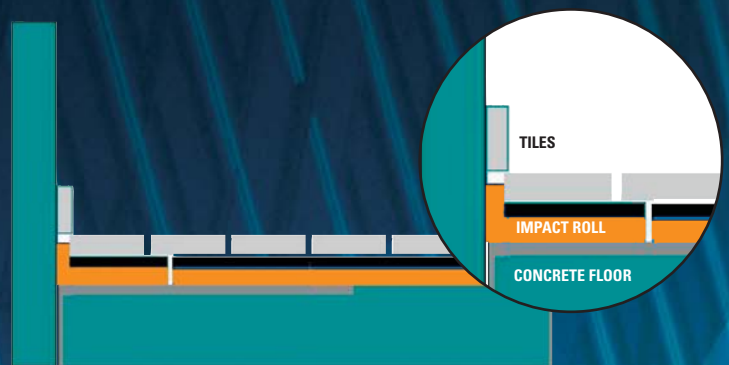
### FLOATING TIMBER FLOORS

#### THERMOTEC SOFTFOAM U

LDPE foam underlay, 2mm thick applied over concrete, under floating timber or laminate floors. Apply PP tape to butt joints. Return edges at wall to isolate floor from walls.

2mm x 1mtr x 50mtr rolls.

Field test result  $L'_{nT, w+C1} = 49$



### HARD SURFACE FLOORS

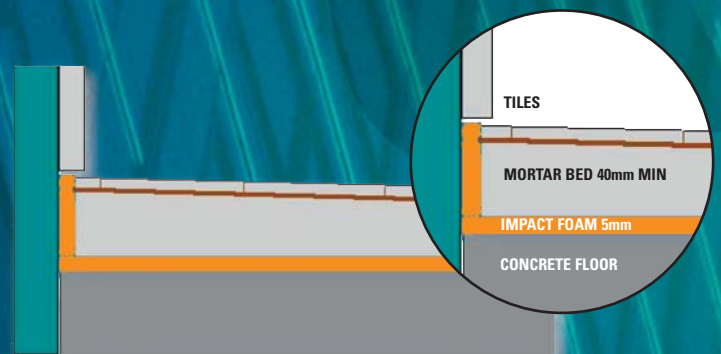
(Flat areas- eg Kitchens, Family, Dining rooms)

#### THERMOTEC T65 IMPACT FOAM

10mm thick glued to concrete using moisture cured PU adhesive. Apply 40mm edge strip of 5mm LDPE foam to walls. Use resilient adhesives to adhere floor coverings such as tiles, or parquetry.

10mm x 1mtr x 50mtr rolls.

Field test result  $L_{n,r,w} = 54$ .



### HARD SURFACE FLOORS

(Wet areas or with falls to waste-eg Bathrooms, Laundries).

#### THERMOTEC IMPACT FOAM 5MM

Applied to concrete plain or with self adhesive backing over waterproof membrane (Refer to AS 3740: Waterproofing of wet areas within residential buildings). Return edge strip of foam to walls to isolate mortar bed from adjoining walls.

5mm x 1mtr x 50mtr rolls.

Field Test Results  $L'_{nT, w+C1} = 44$ .





## NuWave "Base"

Most commonly used to silence noise in walls, timber floors and ceiling spaces, particularly over office partitions in commercial buildings.

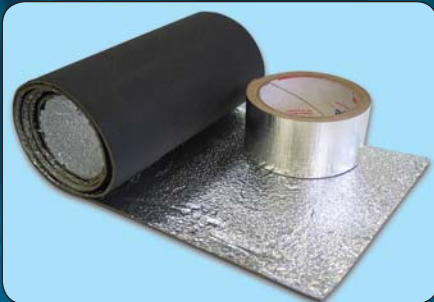
**NuWave Base** is inexpensive and very easy to cut and install. Fabric backed, embossed face, it is tear resistant, highly flexible and is supplied in rolls.

### ROLL SIZES AND ACOUSTIC RATINGS

(all 1350mm nom.width):

- 2kg/m<sup>2</sup> 5 mtr rolls Rw 23\*
- 4kg/m<sup>2</sup> 5 mtr rolls Rw 26\*
- 6kg/m<sup>2</sup> 3 mtr rolls Rw 29\*
- 8kg/m<sup>2</sup> 3 mtr rolls Rw 30\*

\*Rw rating is a single number quantity the transmission loss of a material over the frequency range from 100Hz to 3.15 kHz under AS/NZS 1276.1:1999. Independent test reports available.

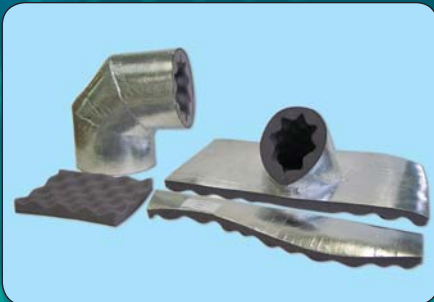


## NuWave "4Zero"™

NuWave's 4Zero barrier is the same as the "Base" product but with a flexible aluminium film facing. The aluminium facing gives the barrier excellent fire resistant properties when tested to AS 1530.3.

This additional flammability performance is important in some applications in buildings and the foil facing also allows reinforced foil tapes to be used to join two pieces of 4Zero together when overlapped.

Roll Sizes and acoustic ratings as for "Base" above.

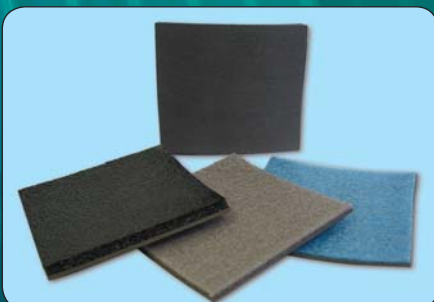


## NUWRAP™ PIPE and DUCT INSULATION

For noisy pipes in buildings, NuWrap is the effective and easy-to-install solution. Also suitable for ducting and ventilation fans, it is supplied with 4Zero foil facing as standard.

Designed to meet the latest building codes, NuWrap is available in Rolls, as pre-cut "Flat Packs" and as Pre-Fabricated Fittings for quick and easy installation.

NuWrap combines acoustic foam (flat or convoluted) laminated to NuWave 4Zero Barrier.



## NUWAVE® IMPACT for FLOORS & WALLS

Noise transmission through walls and floors is one of the most commonly reported causes of noise complaints in commercial and multi-residential buildings.

NuWave has energy absorbing foam and sound barrier composites available for timber and concrete floors and walls.

- Soft Foam "U" for floating timber floors.
- Impact Foam "T65" for concrete floors.

# Choose your NuWave

APPLICATION	NUWAVE BASE	NUWAVE 4ZERO	NUWAVE NUWRAP	NUWAVE IMPACT	NUWAVE OUTDOOR	NUWAVE COMPOSITE
Above partitions	X	X				
Timber floors	X			X		
Concrete floors				X		
Inside floors		X				
Pipes			X			
Ducts			X			
Fans			X			X
Doors	X					
Machinery enclosures						X
Boat floors	X					
Truck and bus floors	X					
Rail carriages	X					X
Office equipment						
Boat engines						X
Car Panels	X					
Access Panels		X				
Duct connectors	X		X			
Outdoors barriers	X				X	
Fences	X				X	

## GREENSTAR COMPLIANCE ODP EMI-9

Please note that the manufacturing procedures for all types of Thermotec Thermal Insulation, and Thermotec's Acoustic Insulation comply with ODP (EMI-9). Thermotec Thermal Insulation & Thermotec Acoustic Insulation and Tapes, avoids the use of ozone depleting substances in both manufacture and composition.

For additional technical information regarding any Thermotec material and for details of your nearest distributor/authorised contractor please contact:

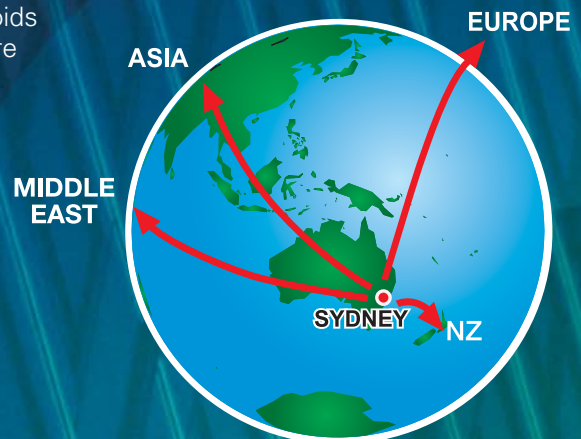


**Thermotec Australia Pty Ltd**  
ACN 003 205 605 ABN 77 003 205 605

### Head Office & Factory

168 Carrington Street  
Revesby NSW 2212  
PO Box 5085 Milperra NSW 1891

**Tel** 1300 727 083  
**Tel** +612 9771 6400  
**Fax** +612 9771 6466  
**Web** [www.thermotec.com.au](http://www.thermotec.com.au)  
**Email** [info@thermotec.com.au](mailto:info@thermotec.com.au)



## Warranty Notice

Whilst all reasonable care is taken in compiling technical data relating to the company's products, all recommendations or suggestions regarding the use of such products are made without guarantee since the conditions of use are beyond the control of the company. It is the customer's responsibility to satisfy themselves that the product is fit for the purpose for which they intend to use it and that the actual conditions of use are suitable. Further the company reserves the right to alter or amend the product without notice in such a way that will not adversely affect its intended purpose or application.

**Distributed by**