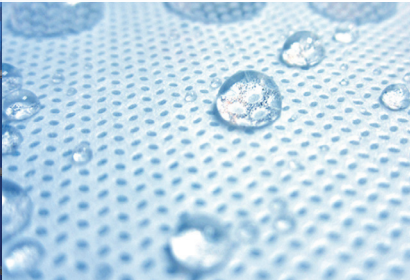


Trade Select™ Brane® VHP

LIGHT WALL DUTY

WATER BARRIER | CLASS 4 - VAPOUR PERMEABLE WALL WRAP



Product Code: TSVHP

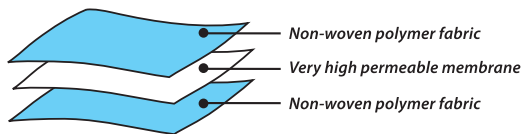
Trade Select™ Brane® VHP is a Very High Permeance (VHP), vapour permeable triple-layer Light Wall Duty wall wrap designed for use in a range of wall systems.

Classified as Water Barrier, Class 4 Vapour Permeable, Trade Select™ Brane® VHP permits very high levels of condensation absorption and diffusion, allowing water vapour to escape from within the wall structure while restricting the ingress of liquid moisture. Brane® VHP is chemically non-reactive and may be used in conjunction with treated timbers or close to coastlines. It is also appropriate as an air barrier in unlined areas such as attics.

- ✓ 2.74 m wide option for quicker installation
- ✓ Advanced water and vapour control membrane
- ✓ Low Flammability, suitable for all BAL in bushfire-prone areas

Construction

Trade Select™ Brane® VHP is a Very High Permeance (VHP) building membrane made with an advanced three-layer construction: two tough outer layers of spun-bonded fabric protecting an inner core of VHP membrane.



Application

Trade Select™ Brane® VHP is used as a wall wrap behind fibre cement and timber cladding in most Australian climates.

NOTE: It is NOT recommended for this application in Climate Zone 1; select from our range of Class 1 and 2 Vapour Barrier products instead.

Trade Select™ Brane® VHP can be used as wall wrap in brick veneer systems.

Trade Select™ SARKING xR BREATHER is the preferred membrane for brick veneer systems outside the humid tropics.

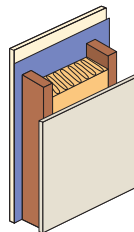
Trade Select™ Brane® VHP is available in a 1370 mm and, 1500 mm width roll, and a convenient 2740 mm width roll that halves installation time and reduces the amount of air gaps and joins in the wall system. If installed behind non-absorbent claddings such as steel, provision should be given for adequate drainage of any trapped moisture.

DECLARED TOTAL SYSTEM R-VALUES

The contribution of this product to the total R-value depends on installation and environmental conditions. The R-value will be reduced in the event of the accumulation of dust on upward facing surfaces and in those cavities that are ventilated.

L.C. / WEATHERBOARD WALL

with one layer of Trade Select™ Brane® VHP + R2.6 Fibrous Batt

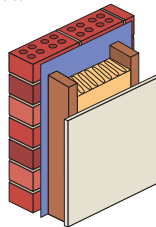


CALCULATION REF: 299w5021

WINTER R_t 3.1 SUMMER R_t 2.8

BRICK VENEER WALL

with one layer of Trade Select™ Brane® VHP + R2.6 Fibrous Batt



CALCULATION REF: 299w302

WINTER R_t 3.3 SUMMER R_t 3.0

Brane® VHP



TSVHP

Trade SelectTM Brane[®] VHP

LIGHT WALL DUTY

CLASS 4 - VAPOUR PERMEABLE WALL WRAP

Material Properties and Classifications

Trade SelectTM Brane[®] VHP classifications in accordance with AS/NZS 4200.1:2017

CRITERIA	REFERENCE	RESULT	REQUIREMENT
Flammability Index	AS 1530.2-1993	Low ≤ 5	High (> 5) / Low (≤ 5)
Duty	AS/NZS 4200.1:2017	Light Wall	Classification
Burst Strength	AS 2001.2.19-1988	254 N	Classification
Burst Strength	AS 2001.2.19-1988	254 N	Classification
Edge Tear	Machine Direction TAPPI T 470 om-89	180 N	
		Lateral Direction 89 N	
Vapour Control	ASTM E96	Class 4 Permeable	Class 1 to 4
Vapour Permeance	ASTM E96	12.8484 $\mu\text{g}/\text{N.s}$	$\mu\text{g}/\text{N.s}$
Water Control	AS/NZS 4201.4:1994	Water Barrier	Water Barrier or Non-water Barrier
Resistance to Dry Delamination	AS/NZS 4201.1:1994	Pass	Pass
Resistance to Wet Delamination	AS/NZS 4201.2:1994	Pass	Pass
Shrinkage (Repeated wetting & drying)	AS/NZS 4201.3:1994	0.0%	$< 0.5\%$
Electrical Conductivity	AS/NZS 4200.1:2017	Electrically Non-conductive	Electrically Non-conductive
Emissance Value	AS/NZS 4201.5:1994	0.42	Value

NCC Compliant

Trade SelectTM Brane[®] VHP complies with AS/NZS 4200.1:2017, and therefore meets all of the requirements of the National Construction Code of Australia for pliable building membranes and sarking-type materials.

Flammability

Low (≤ 5)

Tested to AS1530.2-1993 - *Methods for fire tests on building materials, components and structures Part 2: Test for flammability of materials.*

BUSHFIRE ATTACK LEVELS

Trade SelectTM Brane[®] VHP complies with AS 3959-2009 *Construction of buildings in bushfire-prone areas* for use in wall systems BAL – LOW to BAL – FZ.

Ametalin Tape Range

It is recommended to use the following when required to secure, join or seal Trade SelectTM Brane[®] VHP.

Ametalin Brane[®] VHP Joining Tape - VHPT: 60 mm x 25 m

Ametalin Double Sided Fixing Tape – DSFT-38: 38 mm x 50 m

Handling and Storage

This product should be stored under cover in a clean, dry place in the pack provided. Do not bend or crush roll.

Dimensions

Brane[®] VHP is sold in sizes:

2740 mm x 30 m (82.2 m²)

1500 mm x 30 m (45 m²)

1370 mm x 30 m (41.1 m²)

Specification Notes

When specifying, state the following:

Product Name: Trade SelectTM Brane[®] VHP

The pliable building membrane to be installed shall be Brane[®] VHP very high permeance wall wrap. Product is manufactured by Ametalin and shall be installed in accordance with AS 4200.2: 2017 *Pliable Building Membranes and Underlays, Part 2: Installation.*

Emissance Classification: IR Non-Reflective, 0.42

Vapour Control Classification: Class 4 Vapour Permeable, 12.8484 $\mu\text{g}/\text{N.s}$

Water Control Classification: Water Barrier

Flammability Classification: Low (≤ 5)

© 2018 Ametalin All Rights Reserved. Ametalin is a division of Amalgamated Metal Industries Pty. Ltd. Product information in this publication and otherwise supplied to users is based on our general experience and is given in good faith, but due to factors outside our knowledge and control which may affect the use of products, no warranty is given or implied with respect to this information or the product itself regarding the suitability of the product for any particular purpose. The usage of this and other building membranes will affect moisture migration in the building element. The purchaser should independently determine the suitability of the product for the intended purpose. For large projects with complex air-conditioning and condensation issues, designers may wish to contact our technical department. Batch number is printed on product. Product colour may vary from batch to batch. Amalgamated Metal Industries Pty. Ltd. reserves the right to amend product specifications without prior notice. Information provided is considered to be true and correct at the time of publication. DTE-43567-7-TS

AUSTRALIAN DESIGNED, AUSTRALIAN OWNED.

MANUFACTURED BY:

AMETALIN

9 -11 Playford Crescent Salisbury North SA 5108

T: +61 8 8285 6955 F: +61 8 8285 5911

E: info@tradesselect.co W: tradesselect.co

Trade SelectTM

tradesselect.co

Trade SelectTM Brane[®] VHP

LIGHT WALL DUTY

CLASS 4 - VAPOUR PERMEABLE WALL WRAP

Health and Safety Information

Ametalin has assessed BRANE[®] VHP according to the criteria outlined in the National Occupational Health and Safety Commission (NOHSC): 1008 (2004) and List of Designated Hazardous Substances, NOHSC, Canberra. As a result of the assessment, this product is classified as non-hazardous according to the NOHSC criteria.

To reduce risk of UV damage to the installer, where practical, work in the shade and wear protective clothing, safety glasses and sunscreen when installing this product.

When installing BRANE[®] VHP in windy conditions, take care as the wide width of the product can act as a sail.

Cutting should not be performed with membrane in place.

Exposure to intense heat, sparks, flames or abrasive tools shall be avoided.

Installation

BRANE[®] VHP should be installed in accordance with AS 4200.1:2017 *Pliable Building Membranes and Underlays, Part 2: Installation*.

GENERAL

This product is not designed to withstand prolonged direct exposure to UV light and the elements. Accordingly, the outer construction envelope should be installed within 14 days.

The membrane shall be cut back from any hot flue to avoid being a fire hazard. This can be achieved with a clear space of at least 50 mm and sealing edge with fire rated Ametalin Reinforced Insulation/Ducting Tape or a fire rated collar or as recommended by the manufacturer of the flue and approved by the local authority.

Any damage done to membrane during installation including holes and tears shall be repaired to restore the integrity of the membrane.

WALLS

Common to all walls, joints shall be lapped not less than 150 mm or lapped not less than 50 mm and taped with Ametalin Brane[®] VHP Joining Tape. All end laps shall be fixed at a stud to form a continuous membrane.

Where intended to act as a water control membrane, ensure upper sheets overlap lower sheets to ensure water is shed to the outside face of the membrane and ensure all penetrations are continuously sealed and turned up to facilitate drainage around penetration.

Ensure window and door openings are cut neatly, dressed carefully and are properly fitted at flashing points.

Where intended to act as a vapour control, tape and seal all overlapped joins, penetrations and discontinuities with Ametalin Brane[®] VHP Joining Tape to prevent air movement.

Membrane should extend from the top plate to the bottom plate on concrete slabs or top plate to the bearers in timber constructions. Stagger any vertical overlaps.

FIXING

BRANE[®] VHP should be installed horizontally as a continuous membrane by fixing to all framing members with the printed side facing out. For fastening to timber construction, fix at 300 mm centres for cavity walls and 150 mm centres for direct to stud. Fixings should be cap nails, galvanised clouts or staples and performed prior to cladding. For fastening to steel constructions, tech screws at 300 mm centres for cavity walls or Ametalin Double Sided Insulation Fixing Tape for direct to stud fastening prior to cladding.

In high wind areas, it is recommended to install using flat punched multi-point fasteners or cap screws.

Ametalin Accessories

It is recommended to use the following when required to secure, join or seal Brane[®] VHP:

Ametalin Brane[®] VHP Joining Tape - VHPT: 60 mm x 25 m

Ametalin Double Sided Fixing Tape – DSFT-38: 38 mm x 50 m

© 2018 Ametalin All Rights Reserved. Ametalin is a division of Amalgamated Metal Industries Pty. Ltd. Product information in this publication and otherwise supplied to users is based on our general experience and is given in good faith, but due to factors outside our knowledge and control which may affect the use of products, no warranty is given or implied with respect to this information or the product itself regarding the suitability of the product for any particular purpose. The usage of this and other building membranes will affect moisture migration in the building element. The purchaser should independently determine the suitability of the product for the intended purpose. For large projects with complex air-conditioning and condensation issues, designers may wish to contact our technical department. Batch number is printed on product. Product colour may vary from batch to batch. Amalgamated Metal Industries Pty. Ltd. reserves the right to amend product specifications without prior notice. Information provided is considered to be true and correct at the time of publication. DTE-43567-7-TS

AUSTRALIAN DESIGNED, AUSTRALIAN OWNED.

MANUFACTURED BY:

AMETALIN

9 -11 Playford Crescent Salisbury North SA 5108

T: +61 8 8285 6955 F: +61 8 8285 5911

E: info@tradeselect.co W: tradeselect.co

Trade SelectTM

tradeselect.co