

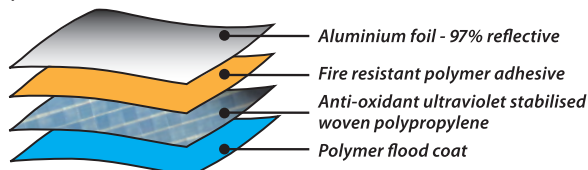
**Product Code: TSMD**

Trade Select™ WALL WRAP MEDIUM DUTY is a Medium Duty wall wrap designed for use in all wall system types, and is also suitable for use under metal roofs. The reflective foil side provides extra R-value when installed facing an air cavity, and the multi-layer structure provides superior strength, flexibility and durability. Classified as a Water Barrier, and Class 2 Vapour Barrier, Trade Select™ WALL WRAP MEDIUM DUTY also acts as a barrier to radiant heat, moisture ingress, draughts and dust penetration.

- ✓ Strong and light weight with high tear resistance
- ✓ Achieves Group 1 classification for wall/ ceiling lining
- ✓ Water barrier, Class 2 Vapour Barrier
- ✓ Low flammability, suitable for all BAL in bushfire-prone areas

**Construction**

Trade Select™ WALL WRAP MEDIUM DUTY is a flexible four layer product made with a combination of anti-oxidant UV-stabilised woven polypropylene, 97% reflective aluminium foil, and fire-resistant polymer adhesive, backed by a polymer flood coat. In order to minimise shrinkage after installation, our products are pre-shrunk during the manufacturing process.



Ametalin utilises Advanced Laminating Technology; the polymer adhesive remains tacky indefinitely and provides superior resistance to heat, fire and delamination.

**Application**

Trade Select™ WALL WRAP MEDIUM DUTY is designed for use as a wall wrap in residential and office buildings in all regions of Australia, and is also suitable for use under metal roofs. SILVERWRAP™ may also be used as a facing material to glasswool, rockwool and semi-rigid bulk insulation provided processing temperatures do not exceed 80°C to ensure no significant changes in the material supplied.

NOTE: Water Barrier, Class 2 Vapour Barrier wall wraps are recommended for wet tropical climate zones

**Tear Resistance**

Trade Select™ WALL WRAP MEDIUM DUTY is an extremely lightweight product with superior tear resistance. Trade Select™ WALL WRAP MEDIUM DUTY is guaranteed to meet or exceed the minimum performance levels for Medium Duty rating required under AS/NZS 4200.1:2017.

	Minimum Value*	Actual Test Value
Machine direction edge tear resistance	65 N	452 N / 25 mm
Lateral direction edge tear resistance	65 N	341 N / 25 mm

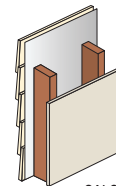
\* Minimum value required to qualify as Medium Duty under AS/NZS 4200.1:2017

**CLASS 2 VAPOUR BARRIER****DECLARED TOTAL SYSTEM R-VALUES**

The contribution of this product to the total R-value depends on installation and environmental conditions. The R-value will be reduced in the event of the accumulation of dust on upward facing surfaces and in those cavities that are ventilated.

**LIGHT WEIGHT CLADDING**

direct to stud with one layer of Trade Select™ WALL WRAP MEDIUM DUTY

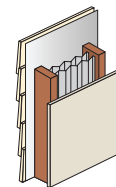


CALCULATION REF: 299w3226

**WINTER**  $R_T 1.0$  **SUMMER**  $R_T 0.9$

**LIGHT WEIGHT CLADDING**

direct to stud with one layer of Trade Select™ WALL WRAP MEDIUM DUTY + two layers of Trade Select™ PLEATED SILVERBATTS™

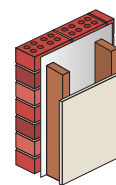


CALCULATION REF: 299w39b

**WINTER**  $R_T 3.1$  **SUMMER**  $R_T 2.7$

**BRICK VENEER**

with one layer of Trade Select™ SILVERWRAP™



CALCULATION REF: 299w3221

**WINTER**  $R_T 1.3$  **SUMMER**  $R_T 1.2$



TSMD

## Material Properties and Classifications

Trade Select™ WALL WRAP MEDIUM DUTY classifications in accordance with AS/NZS 4200.1:2017 and AS/NZS 4859.1:2002, Amdt 1 2006

CRITERIA		REFERENCE	RESULT	REQUIREMENT
Flammability Index		AS 1530.2-1993	Low $\leq 5$	High ( $> 5$ ) / Low ( $\leq 5$ )
Duty		AS/NZS 4200.1:2017	Medium	Classification
Tensile Strength	Machine Direction	AS 1301.448s-91	11.8 kN/m	Min 9.5 kN/m
	Lateral Direction		9.3 kN/m	Min 6.0 kN/m
Edge Tear	Machine Direction	TAPPI T 470 om-89	500 N	Min 65 N
	Lateral Direction		382 N	Min 65 N
Vapour Control		ASTM E96	Class 2 Vapour Barrier	Class 1 to 4
Vapour Permeance		ASTM E96	0.0117 $\mu\text{g}/\text{N.s}$	$\mu\text{g}/\text{N.s}$
Water Control		AS/NZS 4201.4:1994	Water Barrier	Water Barrier or Non-water Barrier
Resistance to Dry Delamination		AS/NZS 4201.1:1994	Pass	Pass
Resistance to Wet Delamination		AS/NZS 4201.2:1994	Pass	Pass
Shrinkage (Repeated wetting & drying)		AS/NZS 4201.3:1994	0.0%	$< 0.5\%$
Electrical Conductivity		AS/NZS 4200.1:2017	Electrically Conductive	Electrically Conductive or Electrically Non-conductive
Emittance Value		AS/NZS 4201.5:1994	Bright side: 0.03    Anti-glare side: 0.9	Value
Emittance Classification		AS/NZS 4200.1:2017	IR Reflective    IR Non-reflective	R - IR Reflective $\leq 0.05$ S - IR Semi-reflective $> 0.05$ to $\leq 0.15$ N - IR Non-reflective $> 0.15$
Emittance Category		AS/NZS 4200.1:2017	RN	RR RS RN SS SN NN

## NCC Compliant

Trade Select™ WALL WRAP MEDIUM DUTY complies with AS/NZS 4859.1:2002/Amdt 1:2006 and AS/NZS 4200.1:2017, and therefore meets all of the requirements of the National Construction Code of Australia for insulation and sarking-type materials.

## Fire Performance

### GROUP NUMBER ASSESSMENT

Group 1

Tested in accordance with AS ISO 9705-2003 – Fire tests - Full-scale room test for surface products.

### FLAMMABILITY INDEX

Low ( $\leq 5$ )

Tested in accordance with AS 1530.2-1993 - Methods for fire tests on building materials, components and structures Part 2: Test for flammability of materials.

### BUSHFIRE ATTACK LEVELS

Trade Select™ WALL WRAP MEDIUM DUTY complies with AS 3959-2009 Construction of buildings in bushfire-prone areas for use in wall systems BAL – LOW to BAL – FZ.

## Handling & Storage

This product should be stored under cover in a clean, dry place in the pack provided.

## Dimensions

Trade Select™ WALL WRAP MEDIUM DUTY is sold in sizes:

1350 mm x 60 m (81 m<sup>2</sup>)

1350 mm x 30 m (40.5 m<sup>2</sup>)

Bulk rolls available upon request.

## Specification Notes

When specifying, state the following:

**Product Name:** Trade Select™ WALL WRAP MEDIUM DUTY

The insulation to be installed shall be Trade Select™ WALL WRAP MEDIUM DUTY single-sided reflective laminate, emittance bright side 0.03. Product is manufactured by Ametalin and shall be installed in accordance with AS 4200.2: 1994 Pliable Building Membranes and Underlays, Part 2: Installation.

Emittance Bright Side: 0.03

Water Vapour Transmission (WVT): 1.44 g/m<sup>2</sup>·24hr

Vapour Resistance: 85.61 MN·s/g

Vapour Control Classification: Class 2 Vapour Barrier

Water Control Classification: Water Barrier

Duty: Medium in accordance with AS/NZS 4200.1:2017

© 2019 Ametalin All Rights Reserved. Ametalin is a division of Amalgamated Metal Industries Pty. Ltd. Product information in this publication and otherwise supplied to users is based on our general experience and is given in good faith, but due to factors outside our knowledge and control which may affect the use of products, no warranty is given or implied with respect to this information or the product itself regarding the suitability of the product for any particular purpose. The usage of this and other building membranes will affect moisture migration in the building element. The purchaser should independently determine the suitability of the product for the intended purpose. For large projects with complex air-conditioning and condensation issues, designers may wish to contact our technical department. Batch number is printed on product. Product colour may vary from batch to batch. Amalgamated Metal Industries Pty. Ltd. reserves the right to amend product specifications without prior notice. Information provided is considered to be true and correct at the time of publication. DTE-43567-13-TS

AUSTRALIAN MADE, AUSTRALIAN OWNED.

MANUFACTURED BY:

AMETALIN

9 -11 Playford Crescent Salisbury North SA 5108

T: +61 8 8285 6955 E: info@tradeselect.co

F: +61 8 8285 5911 W: tradeselect.co

## Health and Safety Information

Ametalin has assessed Trade Select™ WALL WRAP MEDIUM DUTY according to the criteria outlined in the *National Occupational Health and Safety Commission (NOHSC):1008 (1998)* and *NOHSC: 1005 (1999)*. As a result of the assessment, this product is classified as non-hazardous according to the NOHSC criteria. To reduce risk of UV damage when installing this product, wear protective clothing, safety glasses and sunscreen, and work in the shade wherever practical.

## Installation

### ELECTRICAL SAFETY PRECAUTIONS - BEFORE YOU START:

**Ametalin stresses the importance of safe installation practices for foil-based insulation as critical to installer and consumer safety. Aluminium Foil Insulation Association Inc. (AFIA) has prepared Work Method Statements and Hazard Management forms to assist contractors and installers in safe installation of reflective insulation products. These documents are available under 2009 AFIA WMS & Hazard Management, at [www.afia.com.au/news/health-and-safety/](http://www.afia.com.au/news/health-and-safety/).**

Trade Select™ WALL WRAP MEDIUM DUTY should be installed in accordance with *AS 4200.2: 1994 Pliable Building Membranes and Underlays, Part 2: Installation*.

### GENERAL

Trade Select™ WALL WRAP MEDIUM DUTY is not designed to withstand prolonged direct exposure to the elements. Accordingly, the outer construction envelope should be installed without delay. Aluminium foil should not come into contact with wet concrete or mortar, as the aluminium is susceptible to alkali corrosion. If installed within 500 metres of the sea, or in a non-residential building where foil surfaces may be exposed to a corrosive atmosphere (including agricultural sheds), foil surfaces should face an enclosed, un-vented air space. To ensure optimum thermal insulation performance, as well as satisfactory durability, an air space adjacent to the foil side of the product is recommended.

### TIMBER & STEEL FRAMED CONSTRUCTION:

- ▶ **BRICK VENEER**
- ▶ **REVERSE BRICK VENEER**
- ▶ **LIGHT WEIGHT CLADDING DIRECT TO STUD**
- ▶ **LIGHT WEIGHT CLADDING ON BATTENS**

Trade Select™ WALL WRAP MEDIUM DUTY should be installed horizontally as a continuous membrane by fixing to all framing members with the blue side facing out. Trade Select™ WALL WRAP MEDIUM DUTY should extend from the top plate to the bottom plate on concrete slabs or bearers in timber construction. Fixings are to be no more than 450 mm apart and should be galvanised clouts or staples for fastening to timber construction and use tek screws for fastening to steel constructions. In high wind areas, it is recommended to install using flat punched multi-point fasteners or cap screws. Horizontal, vertical and end overlaps must be 150 mm if not taped or 50 mm taped with Ametalin Insulation/Ducting Tape, with all top layers overlapping the outside of lower layers to prevent water ingress. Stagger any vertical overlaps. Any damage made to Trade Select™ WALL WRAP MEDIUM DUTY during installation including holes and tears must be repaired.

Where Trade Select™ WALL WRAP MEDIUM DUTY is intended to act as a vapour barrier, tape and seal all overlapped joins, penetrations and discontinuities with Ametalin Insulation/Ducting Tape to prevent air movement. When Trade Select™ WALL WRAP MEDIUM DUTY is installed as a sarking membrane, all penetrations shall be sealed or turned up to facilitate drainage around penetration. Ensure window and door openings are cut neatly and carefully and are properly fitted at flashing points. Trade Select™ WALL WRAP MEDIUM DUTY shall be cut back from any hot flue to avoid being a fire hazard. This can be achieved by a clear space of at least 50 mm, or as recommended by the manufacturer of the flue and approved by the local authority.

### AMETALIN TAPE RANGE

It is recommended to use the following when required to secure, join, seal and install SILVERWRAP™.

	Size	Product Code	Item Number
Ametalin Insulation Ducting Tape	48 mm x 50 m	IDT-5050	0810227
Ametalin Reinforced Insulation Ducting Tape:	75 mm x 50 m	IDTR-7250	0029077
Ametalin Double Sided Fixing Tape	38 mm x 50 m	DSFT-3850	0811320

© 2019 Ametalin All Rights Reserved. Ametalin is a division of Amalgamated Metal Industries Pty. Ltd. Product information in this publication and otherwise supplied to users is based on our general experience and is given in good faith, but due to factors outside our knowledge and control which may affect the use of products, no warranty is given or implied with respect to this information or the product itself regarding the suitability of the product for any particular purpose. The usage of this and other building membranes will affect moisture migration in the building element. The purchaser should independently determine the suitability of the product for the intended purpose. For large projects with complex air-conditioning and condensation issues, designers may wish to contact our technical department. Batch number is printed on product. Product colour may vary from batch to batch. Amalgamated Metal Industries Pty. Ltd. reserves the right to amend product specifications without prior notice. Information provided is considered to be true and correct at the time of publication. DTE-43567-13-TS

**AUSTRALIAN MADE, AUSTRALIAN OWNED.**

**MANUFACTURED BY:**

**AMETALIN**

9 -11 Playford Crescent Salisbury North SA 5108

T: +61 8 8285 6955 E: [info@tradeselect.co](mailto:info@tradeselect.co)

F: +61 8 8285 5911 W: [tradeselect.co](http://tradeselect.co)