



HMIS Forum

First Quarter 2016

Harris County Child Protective Services
Thursday, March 17, 2015
9:00 – 11:00 am

Your HMIS Team

- Erol Fetahagic – System Administrator/Analyst
- Karen Flores – HMIS Support Specialist
- Kelita Beechum – Support Manager
- Ryan R. Clay – Reporting Manager
- Yvette Fuentes – HMIS Trainer

Agenda

- AHAR Update
- Funder Panel Discussion
- Site Visits

AHAR Factoids

- The ***central*** resource for national data on homelessness used by federal, state, and local policymakers to inform their policies and understand trends in homelessness.
- Based on local data from Point in Time counts, Housing Inventory, and HMIS Data Standards
- Reporting period is from October 1 to September 30
- Contains six reporting categories and a summary
 - Emergency Shelter for Families
 - Emergency Shelter for Individuals
 - Transitional Housing for Families
 - Transitional Housing for Individuals
 - Permanent Housing for Families
 - Permanent Housing for Individuals
- Participation in the AHAR is now a scoring factor in the funding application that CoCs submit to HUD each year
 - Houston is a Sample Site (reporting required)
 - Harris County reporting category includes Ft. Bend, Baytown, and Pasadena

AHAR Factoids

Houston

AIDS Foundation Houston	Northline SRO
Asset Building Network	Open Door Mission
Brentwood Community Foundation	Santa Maria Hostel Inc.
Career & Recovery Resources	SEARCH Homeless Services
Catholic Charities	Star of Hope Mission
Change Happens!	Stop Turning Entering Prison
Covenant House Texas	Temenos Community Development
Goodwill Industries of Houston	The Beacon
Harmony House	The Housing Corporation
Harris County Community Services	The Salvation Army
Haven of Hope	The Women's Home
Houston Area Community Services	U.S. Dept of Veteran Affairs
Houston Housing Authority	U.S. Veterans Initiative
Memorial Assistance Ministries	Wellsprings Village
MHMRA	Wesley Community Center
Mission of Yahweh	Wheeler Avenue 5C's

Harris County

A Caring Safe Place

AIDS Foundation Houston

Bay Area Homeless Services

Houston Housing Authority

Northwest Assistance Ministries

Parks Youth Ranch

Sarah's House

SEARCH Homeless Services

U. S. Department of Veteran Affairs

Funder Panel Discussion

City of Houston
Ft. Bend County
Harris County
HUD Continuum of Care



From left to right: Concetta Scerbo (HUD CoC), Karen Bringol (Ft. Bend), Carol Borrego (Ft. Bend), Esmeralda Gonzalez (Harris County), Antoinette Boone (City of Houston) and Robin James (City of Houston)

FUNDER: CITY OF HOUSTON

Robin James

Robin.James@houstontx.gov

Antoinette Boone

Antoinette.Boone@houstontx.gov



“Emergency Solutions Grants (ESG)” “Housing Opportunities for Persons with AIDS (HOPWA)” Programs

“The Data Matters”

ESG & HOPWA HMIS 2016

Emergency Solutions Grants (ESG) Program

The Data Matters

Emergency Solutions Grants (ESG) Program Objectives

Engage homeless individuals and families living on the streets.

Improve the number and quality of emergency shelters for homeless individuals.

Help operate these shelters.

Provide essential services to shelter residents.

Rapidly re-house homeless individuals and families.

Prevent families/individuals from becoming homeless.

ESG Eligible Program Components

Street Outreach

Emergency Shelter

Homelessness Prevention

Rapid-Rehousing

HMIS

Administration

ESG Beneficiary Eligibility

The minimum eligibility criteria for ESG beneficiaries are as follows:

- For essential services related to street outreach, beneficiaries must meet the criteria under paragraph (1)(i) of the “homeless” definition under § 576.2.
- For emergency shelter, beneficiaries must meet the “homeless” definition in 24 CFR 576.2.
- For essential services related to emergency shelter, beneficiaries must be “homeless” and staying in an emergency shelter (which could include a day shelter).
- For homelessness prevention assistance, beneficiaries must meet the requirements described in 24 CFR 576.103par.
- For rapid re-housing assistance, beneficiaries must meet requirements described in 24 CFR 576.104.

ESG EXPENDITURES BY PROGRAM COMPONENT

(City of Houston July 1, 2014 - June 30, 2015)



Number of Persons Assisted

(City of Houston July 1, 2014 - June 30, 2015)

1,058

- Homelessness Prevention

382

- Rapid Re-Housing

3,157

- Emergency Shelter

Special Populations Served

Subpopulations Served	Total
Veterans	242
Victims of Domestic Violence	1110
Elderly	114
HIV/AIDS	15
Chronically Homeless	77
Persons with Disabilities	0
Severely Mentally Ill	699
Chronic Substance Abuse	489
Other Disability	574
TOTAL	3,001

New ESG Requirements

- Starting with their 2015 CAPER submissions, ESG recipients will report aggregated ESG program report information at the subrecipient level, using the newly-developed eCart.
- ESG recipients will obtain data from all ESG subrecipients through a special CSV export.
- This information will be used to populate the eCart tool for submission to HUD.
- eCart is a Microsoft Excel spreadsheet that is configured to load report level, aggregate information from a Homeless Management Information System (HMIS) and produce all statistical information required by HUD on clients served in projects funded under ESG.

ESG HMIS Data Reporting

Program Specific Data Element	Emergency Shelter Night by Night	Emergency Shelter – All Others	Homelessness Prevention	Rapid - Rehousing	Street Outreach
Income and Sources		X	X	X	X
Non-Cash Benefits		X	X	X	X
Health Insurance		X	X	X	X
Physical Disability	X	X	X	X	X
Developmental Disability	X	X	X	X	X
Chronic Health Condition	X	X	X	X	X
HIV/AIDS	X	X	X	X	X
Mental Health Problem	X	X	X	X	X
Substance Abuse	X	X	X	X	X
Domestic Violence	X	X	X	X	X
Contact	X				X
Date of Engagement	X				X
Residential Move-in Date				X	
Housing Assessment at Exit			X		

Housing Opportunities for Persons with AIDS (HOPWA) Program

The Data Matters

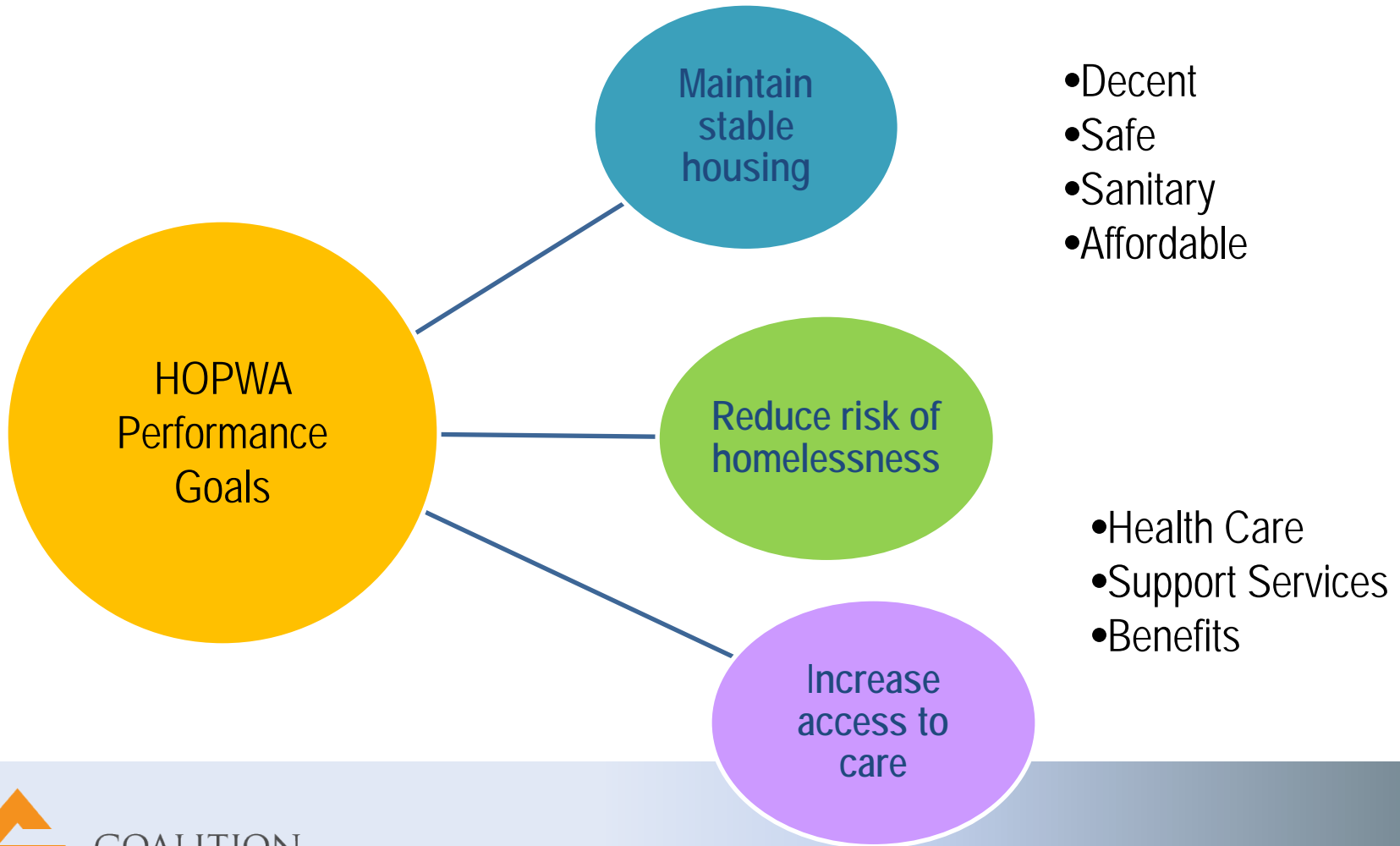
HOPWA

- **Housing Opportunities for Persons with AIDS** *is a federally administered grant program for state & local governments that provides housing assistance and related supportive services for low-income persons with HIV/AIDS and their families.*

Top Six Reasons for HIV Housing

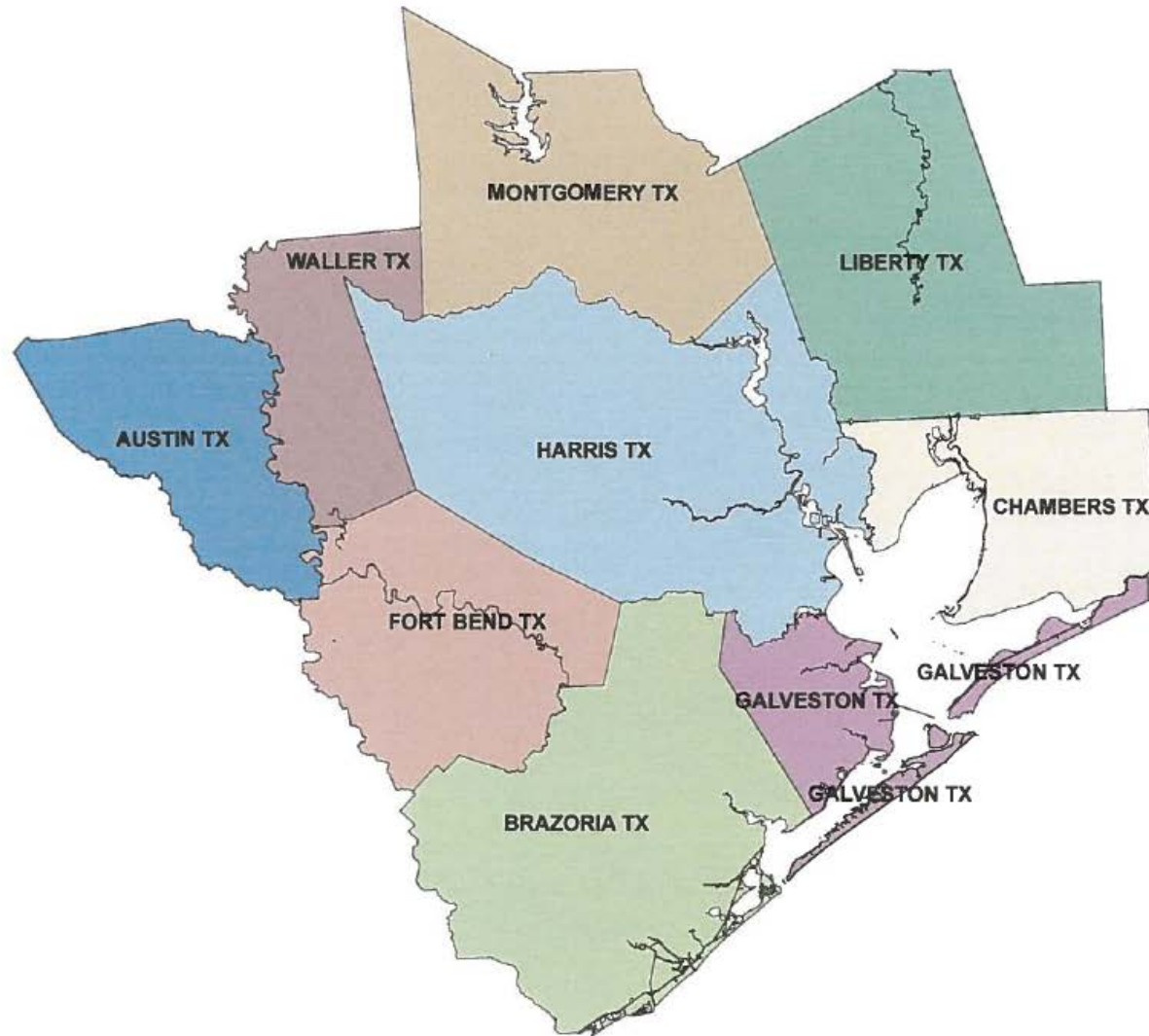
1. **Need:** PLWHA are significantly more vulnerable to becoming homeless during their lifetime.
2. **HIV Prevention:** Housing stabilization can lead to reduced risk behaviors and transmission.
3. **Improved treatment adherence and health:** Homeless PLWHA provided HOPWA housing support demonstrated improved medication adherence and health outcomes.
4. **Reduction in HIV transmission:** Stably housed PLWHA demonstrated reduced viral loads resulting in significant reduction in HIV transmission.
5. **Costs Savings:** Homeless or unstably housed PLWHA are more frequent users of high-cost hospital-based emergency service, shelters, and criminal justice system.
6. **Discrimination and stigma:** AIDS-related stigma and discrimination add to barriers and disparities in access to appropriate housing and care along with adherence to HIV treatment.

HOPWA Performance Goals



HOPWA

Eligible Metropolitan Statistical Areas



Legend

- AUSTIN TX
- BRAZORIA TX
- CHAMBERS TX
- FORT BEND TX
- GALVESTON TX
- HARRIS TX
- LIBERTY TX
- MONTGOMERY TX
- WALLER TX

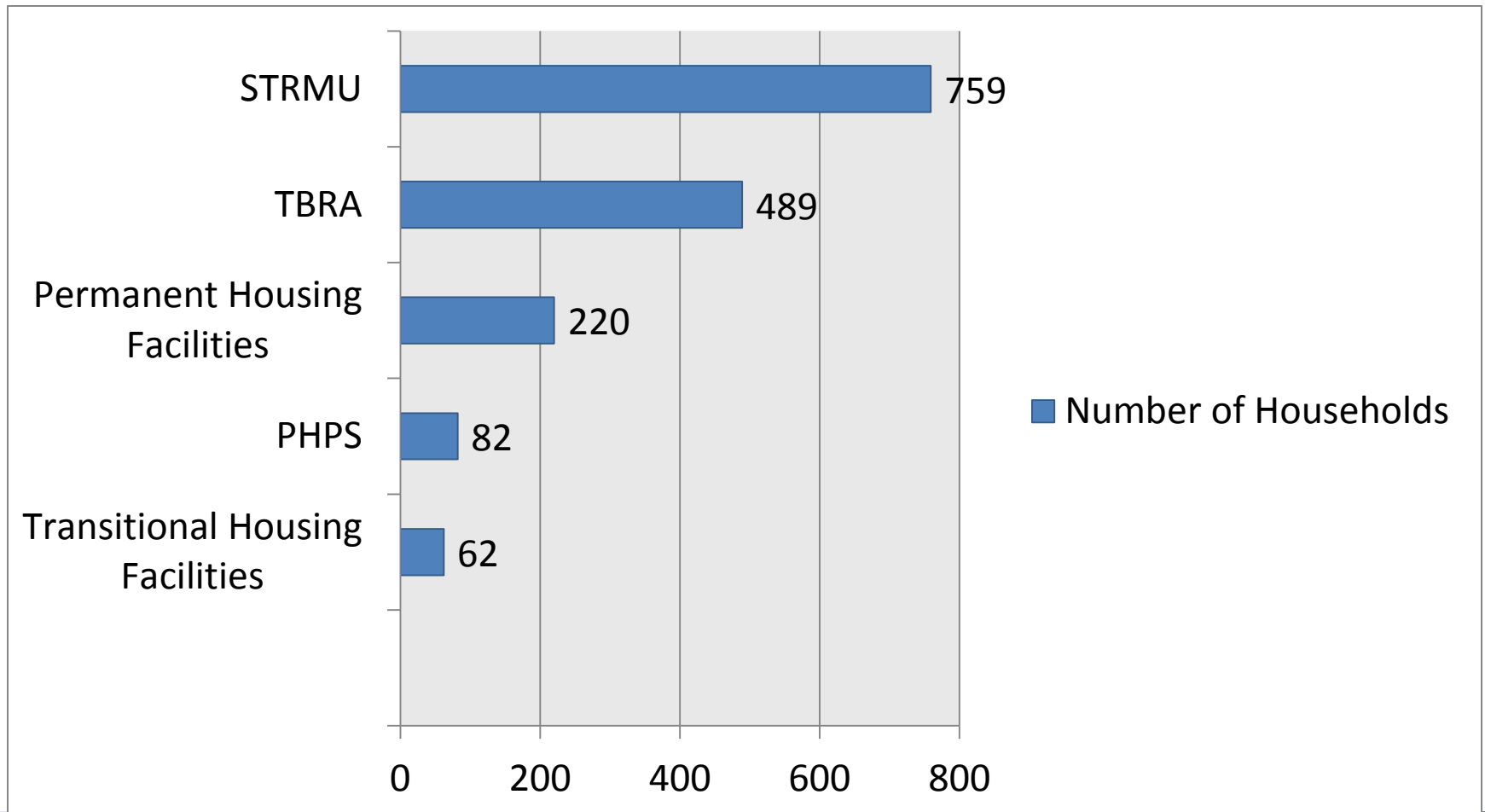
Publication Date 02/28 / 2018

Data Source: HUD Low/Moderate Income Summary Data (LMI SD) released 7.1.14 HCDD Data & COHHS

COHHS data is prepared and made available for general reference purposes only and should not be used or relied upon for specific applications, without independent verification. The City of Houston neither represents, nor warrants COHHS data accuracy, or completeness, nor will the City of Houston accept liability of any kind in conjunction with its use.

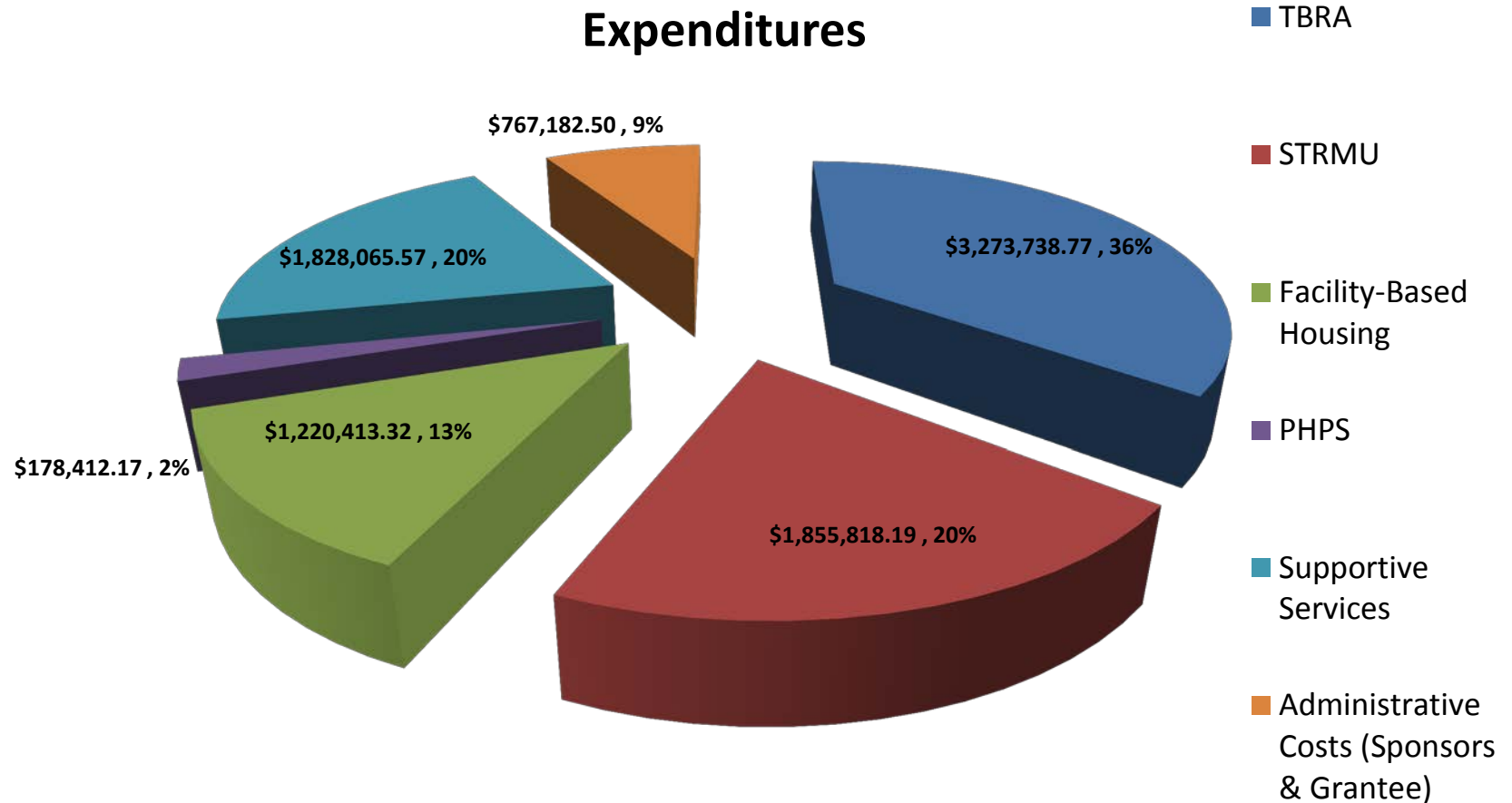
0 5 10 20 Miles

Number of Households by Type of Housing Assistance (City of Houston July 1, 2014 - June 30, 2015)



Expenditures by Type of Activity

City of Houston, July 1, 2014 – June 30, 2015



HOPWA HMIS REPORTING

HMIS Program Specific Data Element TH		H/M	HI	PH	PHP	STH	STRMU
• 4.1 Housing Status							
X	X	X	X	X	X	X	X
• 4.2 Income and Sources							
X	X	X	X	X	X	X	X
• 4.3 Non-Cash Benefits							
X	X	X	X	X	X	X	X
• 4.4 Health Insurance							
X	X	X	X	X	X	X	X
• 4.5 Physical Disability							
X	X	X	X	X	X	X	X
• 4.6 Developmental Disability							
X	X	X	X	X	X	X	X
• 4.7 Chronic Health Condition							
X	X	X	X	X	X	X	X
• 4.8 HIV/AIDS							
X	X	X	X	X	X	X	X
• 4.9 Mental Health Problem							
X	X	X	X	X	X	X	X
• 4.10 Substance Abuse							
X	X	X	X	X	X	X	X
• 4.11 Domestic Violence							
X	X	X	X	X	X	X	X
• 4.14 C Services Provided – HOPWA							
X	X	X	X	X	X	X	X
• 4.15 A Financial Assistance – HOPWA							
					X		X
• 4.19 Housing Assessment at Exit							
X	X	X	X	X	X	X	X
• 4.39 Medical Assistance							
X	X	X	X	X	X	X	X

HOPWA Eligible Activities

Housing Information Services

Resource Identification

Lease, Rehabilitation, Acquisition and Repairs

New Construction (Community Residences & SROs)

Short-term Rent, Mortgage and Utilities Assistance

Tenant-based Rental Assistance

Supportive Services

Operating Costs

Technical Assistance

Administrative Expenses



COALITION
FOR THE
HOMELESS
Leading Houston Home

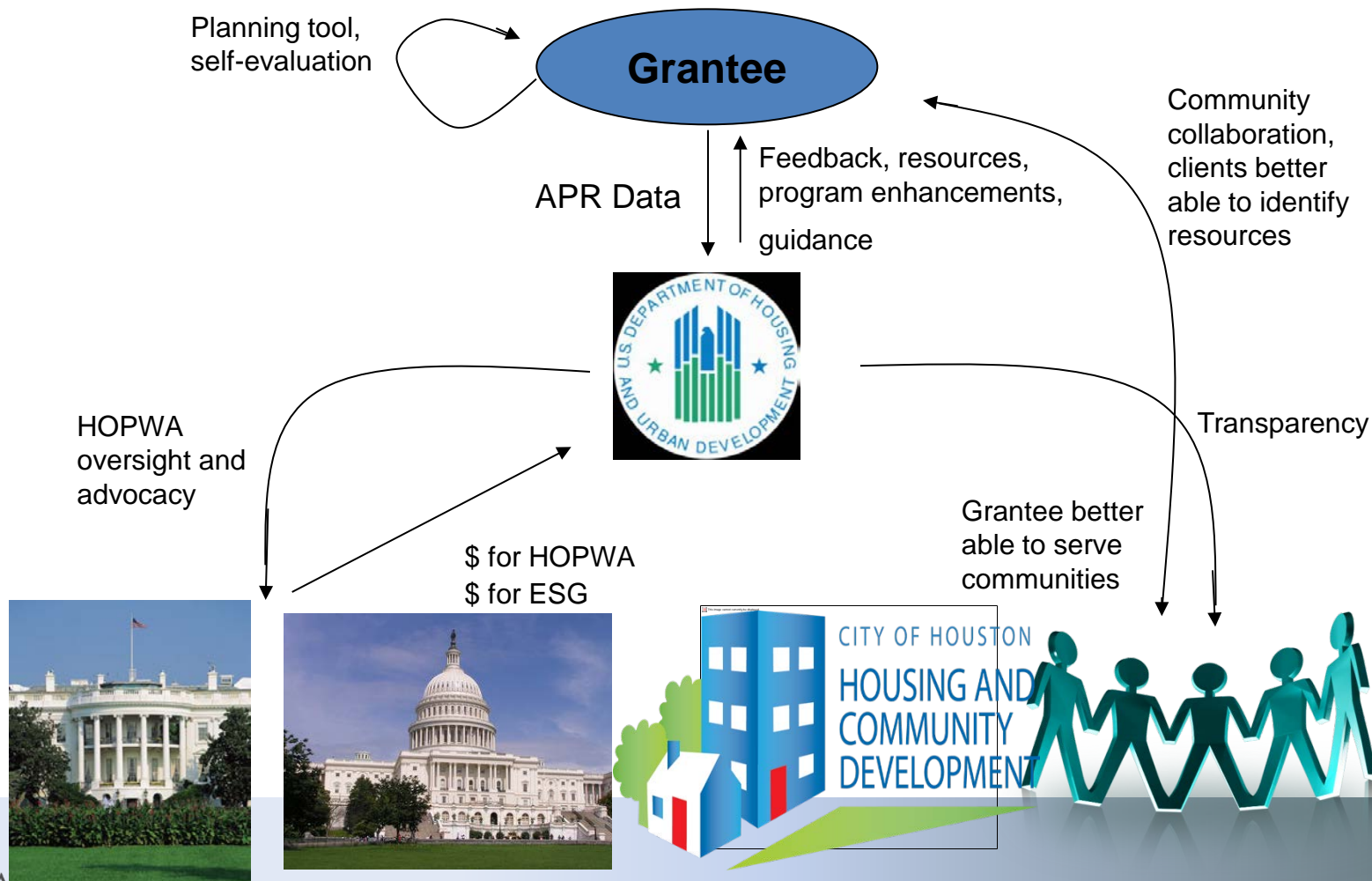
The Consolidated Plan

- ESG and HOPWA are both HUD Formula Grants Programs covered by the Consolidated Plan, which include:
 - Community Development Block Grant (CDBG)
 - Emergency Solutions Grants (ESG)
 - Home Investment Partnerships Program (HOME)
 - Housing Opportunities for Persons With AIDS (HOPWA)

THE DATA MATTERS!

- Reporting is required by the Regulations.
- HUD uses the CAPER and IDIS data to obtain essential information on grant activities, project sponsors, housing sites, units and households, and beneficiaries.
- Information obtained from the reports enables HUD to have data to support its requests for needed resources.

Why is Performance Reporting Important?



REMEMBER GIGO!

(Please review your data quality reports for errors.)



THANK YOU



CITY OF HOUSTON
HOUSING AND
COMMUNITY
DEVELOPMENT

JOIN THE CONVERSATION!



@HoustonHCDD

FUNDER: FORT BEND COUNTY COMMUNITY DEVELOPMENT DEPARTMENT

Carol Borrego, AICP, Planner

Carol.Borrego@fortbendcountytexas.gov

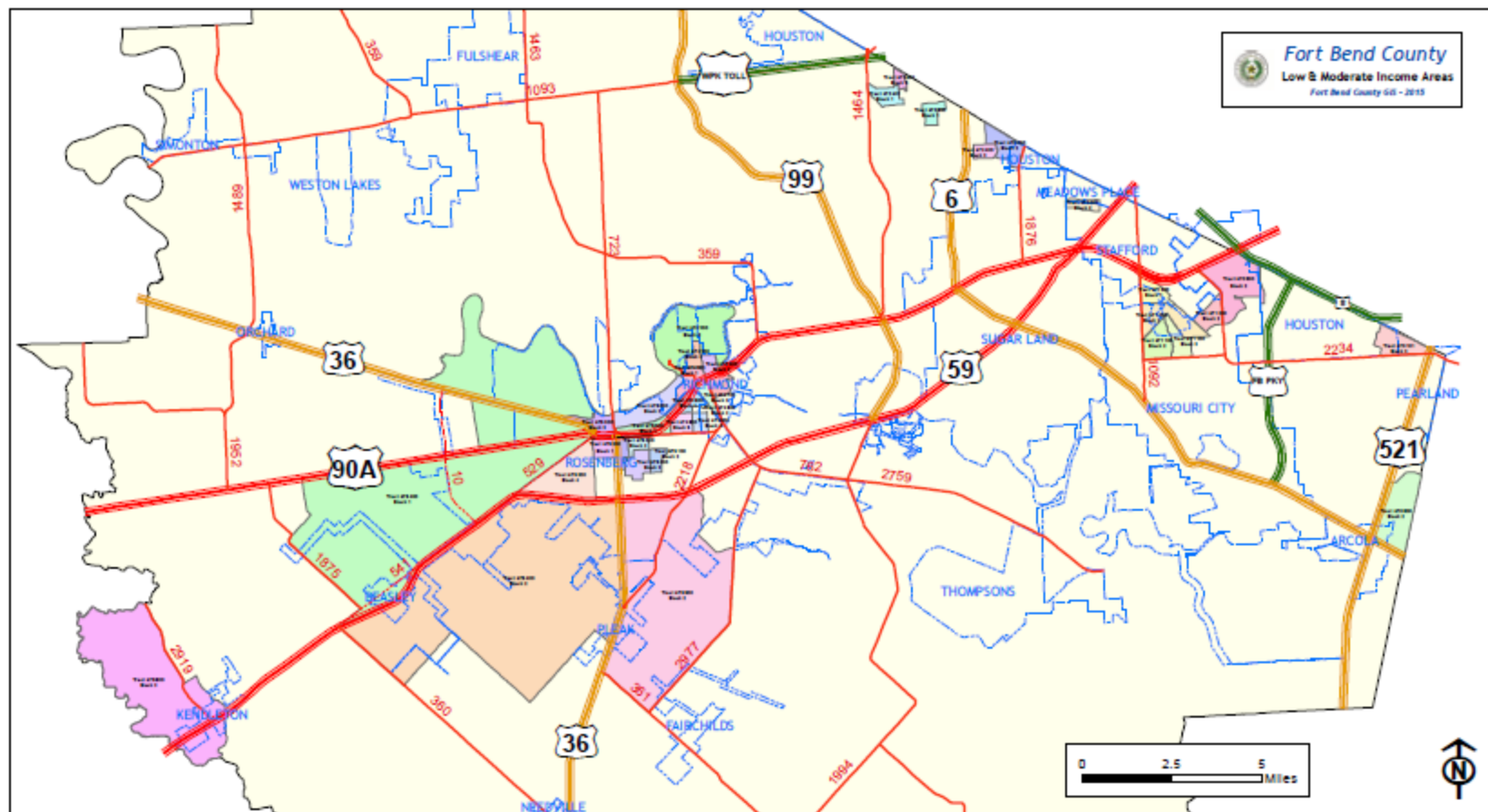
Karen Bringol, Project Coordinator

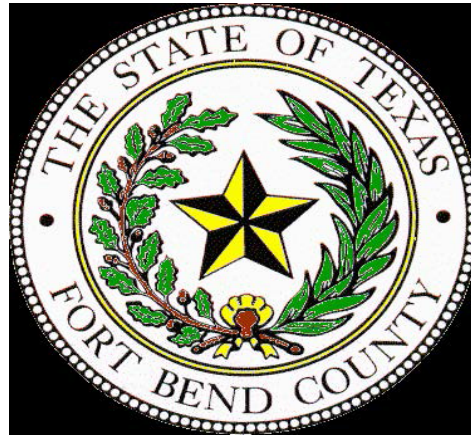
Karen.Bringol@fortbendcountytexas.gov

Fort Bend County, Texas

- No.1 Fastest Growing County of the Ten Largest Counties in Texas
Current Population of 606,953.
- Consistently Ranked in the Top 3% of the Nation's Counties in 5 Key Demographic Measures.
- Regional Leadership in Secondary Education; Exceptionally Educated and Skilled Resident Workforce.
- A Leading Example of Successful Diversity in the Community and in the Workplace.
- There is a consistent and dominant element woven throughout everything in Fort Bend County. It is the 20+ year on-going deliberate investment and strategy into Quality and Excellence. Fort Bend delivers on the promise of being a "Best Place to Live and Work."

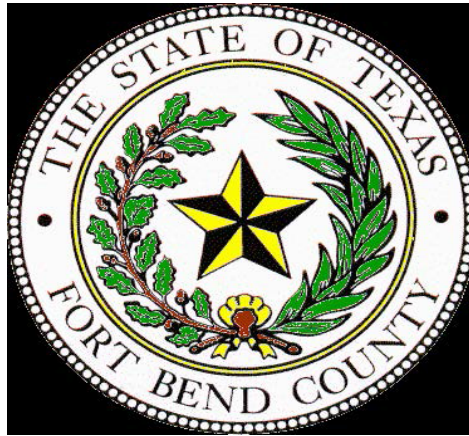
• Source: Greater Fort Bend Economic Development Council





The Fort Bend County service area includes the cities of Arcola, Beasley, Fairchilds, Fulshear, Kendleton, Meadows Place, Needville, Orchard, Pleak, Richmond, Rosenberg, Stafford, and Thompsons. The service area does not include **the cities of Houston, Katy, Missouri City, Pearland, Simonton, Sugar Land and Weston Lakes.**

Low and Moderate Income Population= 396,120
Exception criteria = 45.58%



Issues:

Some towns very small, 400 persons or less

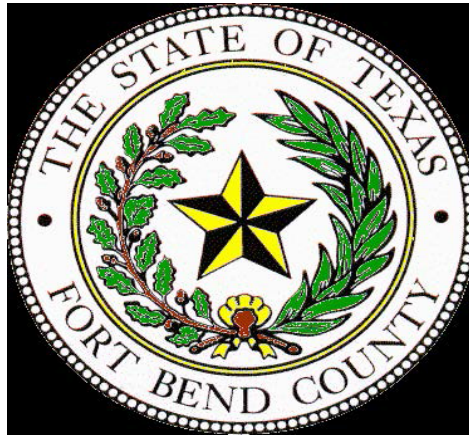
Only 2 shelters:

- **FBCWC - domestic violence**
- **Parks Youth Ranch – youth**

No transitional or permanent supportive housing.

Two other entitlement areas Sugar Land and Missouri City do not receive ESG Program funds directly from HUD.

No Mass Transit (County Transportation Program)



Example: City of Kendleton

United Way Directory website will show no shelter services when you do a search;

Closest: Transitional Housing = Harris County 34 miles away.

	Houston*	Harris Co.	FB Co.	Pasadena*
Population	2,134,707	4,182,285	608,939	150,785
Housing Units	907,494	1,616,961	202,621	53,374
Size (Sq. Miles)	627	1,778	886	45
2015 PIT		4,355	254	
2015 CDBG	\$22,352,814	\$11,932,841	\$2,222,391	\$1,593,820
2015 HOME	\$6,507,862	\$2,717,525	\$436,211	\$386,059
2015 ESG	\$2,027,628	\$1,055,755	\$195,277	\$146,635
2015 HOPWA	\$10,343,492	\$0.00	\$0.00	\$0.00
Total	\$41,231,796	\$15,706,121	\$2,853,879	\$2,126,514
PY Start Date	July 1	March 1	Sept .1	Oct. 1
*located w/in Harris County				

Harris County and Fort Bend County Size:
2,664 Square Miles

Harris County and Fort Bend County
Population:
4,791,224 Persons

Harris County and Fort Bend County Housing
Units:
1,819,582

Harris County and Fort Bend County Homeless

4,609 Persons

Unsheltered

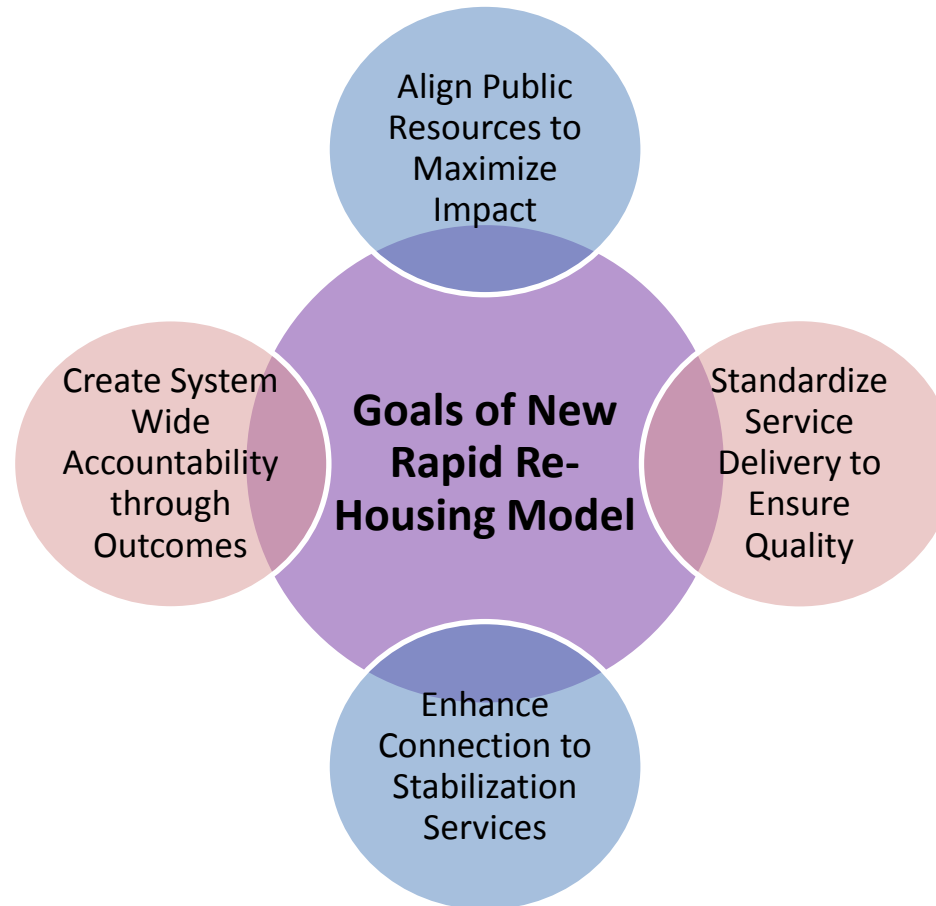
1,950 Persons

(42 Percent)

Source: Coalition for the Homeless. Houston/Harris County/Fort Bend County Point-in-Time County 2015 Executive Summary

The Way Home

Houston/Harris County Continuum of Care Rapid Re-Housing Funding Collaborative



ESG Program Guides, Tools, and Webinars

- <https://www.hudexchange.info/programs/esg/guides/>

Checklist of Requirements for the Homelessness Portions of Consolidated Plan Annual Action Plan

Action Plan Outline

A. BACKGROUND INFORMATION AND GENERAL GUIDANCE

The annual action plan provides a yearly update of jurisdictions' proposed action steps and priorities for the next program year. The recent changes to the consolidated plan regulations introduce a number of new required elements for the annual action plan that are relevant to reducing and ending homelessness. The textbox below contains a brief outline of the complete annual action plan with the expanded homelessness-related sections, which are the main focus of this checklist, in bold.

Checklist Requirements

Action Plan Outline

- a) SF-424
- b) Executive Summary
 - 1) Objectives & Outcomes
 - 2) Evaluation of Past Performance
 - 3) Summary of Citizen Participation & Consultation Process
 - 4) Summary of Comments or Views
 - 5) Summary of Comments or Views Not Accepted & Reasons Therefore
- c) Resources and Objectives
 - 1) Federal Resources
 - 2) Other Resources
 - 3) Annual Objectives
- d) Activities to be Undertaken
- e) Outcome Measures
- f) Geographic Distribution
- g) Affordable Housing One-Year Goals
- h) Public Housing

Checklist Requirements

i) Homeless & Other Special Needs Activities

- 1) One-Year Goals & Action Steps
 - i. Outreach
 - ii. Emergency Shelter & Transitional Housing Needs
 - iii. Transition to Permanent Housing & Independent Living
 - iv. Prevention Among Individuals & Families:
 - A. Being Discharged from Publicly-funded Institutions
 - B. Receiving Assistance from Public & Private Agencies
- 2) Activities Addressing Housing & Supportive Service Needs of Persons with Special Needs

l) Program Specific Requirements for ESG

- 1) Written Standards
- 2) Description of CoC
- 3) Process for Making Subawards
- 4) Homeless Participation Requirement
- 5) Performance Standards
- 6) Consultation with CoC

FY 2014: Consolidated Annual Performance and Evaluation Report (CAPER):

CR-60 - ESG 91.520(g) (ESG Recipients only)

1. Recipient Information—All Recipients Complete (Basic Grant Information)
2. Reporting Period—All Recipients Complete
3. Subrecipient Form – Complete one form for each subrecipient

CAPER Breakdown

CR-65 - Persons Assisted

4. Persons Served

4a. Complete for Homelessness Prevention Activities

Number of Persons in Households	Total
Adults	2
Children	2
Don't Know/Refused/Other	0
Missing Information	0
Total	4

CAPER Breakdown

4b. Complete for Rapid Re-Housing Activities

Number of Persons in Households	Total
Adults	27
Children	23
Don't Know/Refused/Other	0
Missing Information	0
Total	50

Table 15 – Household Information for Rapid Re-Housing Activities

CAPER Breakdown

4c. Complete for Shelter

Number of Persons in Households	Total
Adults	40
Children	178
Don't Know/Refused/Other	0
Missing Information	0
Total	218

CAPER Breakdown

4d. Street Outreach

Number of Persons in Households	Total
Adults	0
Children	0
Don't Know/Refused/Other	0
Missing Information	0
Total	0

CAPER Breakdown

4e. Totals for all Persons Served with ESG

Number of Persons in Households	Total
Adults	69
Children	203
Don't Know/Refused/Other	0
Missing Information	0
Total	272

CAPER Breakdown

5. Gender—Complete for All Activities

	Total
Male	113
Female	159
Transgender	0
Don't Know/Refused/Other	0
Missing Information	0
Total	272

6. Age—Complete for All Activities

	Total
Under 18	203
18-24	9
25 and over	60
Don't Know/Refused/Other	0
Missing Information	0
Total	272

CAPER Breakdown

7. Special Populations Served—Complete for All Activities

Subpopulation	Total	Total Persons Served – Prevention	Total Persons Served – RRH	Total Persons Served in Emergency Shelters
Veterans	0	0	0	0
Victims of Domestic Violence	89	89	89	89
Elderly	3	2	2	1
HIV/AIDS	0	0	0	0
Chronically Homeless	0	0	0	0

Number of Persons in Households

CAPER Breakdown

Persons with Disabilities:				
Severely Mentally Ill	0	0	0	3
Chronic Substance Abuse	0	0	0	0
Other Disability	7	7	3	0
Total (Unduplicated if possible)	99	98	94	93

CAPER Breakdown

CR-70 – ESG 91.520(g) - Assistance Provided and Outcomes

Number of New Units - Rehabbed	0
Number of New Units - Conversion	0
Total Number of bed-nights available	31,755
Total Number of bed-nights provided	25,044
Capacity Utilization	78.87%

10. Shelter Utilization

Expenditures

11. Project Outcomes Data measured under the performance standards developed in consultation with the CoC(s)

CR-75 – Expenditures

11. Expenditures

11a. ESG Expenditures for Homelessness Prevention

	Dollar Amount of Expenditures in Program Year		
	2012	2013	2014
Expenditures for Rental Assistance	0	8,535	2,954
Expenditures for Housing Relocation and Stabilization Services - Financial Assistance	0	290	0
Expenditures for Housing Relocation & Stabilization Services - Services	0	0	0
Expenditures for Homeless Prevention under Emergency Shelter Grants Program	0	0	0
Subtotal Homelessness Prevention	0	8,825	2,954

Expenditures

11b. ESG Expenditures for Rapid Re-Housing

	Dollar Amount of Expenditures in Program Year		
	2012	2013	2014
Expenditures for Rental Assistance	0	33,679	41,847
Expenditures for Housing Relocation and Stabilization Services - Financial Assistance	0	8,541	7,124
Expenditures for Housing Relocation & Stabilization Services - Services	0	0	0
Expenditures for Homeless Assistance under Emergency Shelter Grants Program	0	0	0
Subtotal Rapid Re-Housing	0	42,220	48,971

Expenditures

11c. ESG Expenditures for Emergency Shelter

	Dollar Amount of Expenditures in Program Year		
	2012	2013	2014
Essential Services	0	3,294	28,212
Operations	0	5,470	39,153
Renovation	0	0	0
Major Rehab	0	0	0
Conversion	0	0	0
Subtotal	0	8,764	67,365

11d. Other Grant Expenditures

	Dollar Amount of Expenditures in Program Year		
	2012	2013	2014
HMIS	0	0	0
Administration	0	0	12,591
Street Outreach	0	0	0

11e. Total ESG Grant Funds

Total ESG Funds Expended	2012	2013	2014
191,690	0	59,809	131,881

11f. Match Source

	2012	2013	2014
Other Non-ESG HUD Funds	0	0	0
Other Federal Funds	0	5,724	26,567
State Government	0	0	12,350
Local Government	0	40,370	13,764
Private Funds	0	0	84,930
Other	0	0	7,002
Fees	0	0	0
Program Income	0	0	0
Total Match Amount	0	46,094	144,613

11g. Total

Total Amount of Funds Expended on ESG Activities	2012	2013	2014
382,397	0	105,903	276,494

eCart (ESG-CAPER Annual Reporting Tool) and Guide

Date Published: January 2016

Description

Emergency Solutions Grants (ESG) recipients will use this tool to report aggregated ESG Program report information. eCart is a Microsoft Excel spreadsheet that is configured to load report level, aggregate information from a Homeless Management Information System (HMIS) and produce all statistical information required by HUD on program participants served in ESG-funded projects. The information in eCart replaces all data previously collected on screen CR-65 in the eCon Planning Suite.

eCart (ESG-CAPER Annual Reporting Tool) and Guide

eCart v1.2 includes a fix that corrects the way data is pulled into tables Q10d (Gender by Age), 22d (Length of Participation by Household Type), Q23b (Homeless Prevention Housing Assessment at Exit), and 26b (Number of Chronically Homeless Persons by Household) on the “Combined Reports” tab. Recipients should discard older versions of eCart and use the newly-released eCart v1.2 for their 2015 CAPER submission.

This is a macro-enabled Excel workbook (.XLSM). After you download and open this file, you will see a warning message in yellow at the top of the workbook warning you about the macros. You must click “Enable content” to allow eCart to function properly.

Note: The eCart Guide is embedded on the first tab of eCart and available in the eCart Guidebook below.

Resource Links:

[eCart \(ESG-CAPER Annual Reporting Tool\)](#) (ZIP)

[eCart Guidebook](#) (PDF)

<https://www.hudexchange.info/resource/4785/ecart-esg-caper-annual-reporting-tool-and-guide/>

eCart (ESG-CAPER Annual Reporting Tool) and Guide

Emergency Solutions Grant CAPER Reporting and eCart Guide

ESG recipients will obtain data from their subrecipients through a special Comma Separated Value (CSV) export; which the recipients will use to populate the eCart tool for submission to HUD. The information in eCart replaces all data previously collected on screen CR-65. Recipients must attach the eCart to their CAPER submission to fulfill the new requirement and will no longer be required to enter the data manually onto screen CR-65.

Monthly reports include:

Invoices: Financial information and back-up documentation

Data: Client data sheets: new and duplicates
Employee data sheets

Annual reports include: Year End Report and Self Evaluation
(Goals, Accomplishments, Issues, Problems)

Issues

Financial:	addition, percentages and other errors budget items not in contract missing deadlines
Data:	blanks or missing data/information addition and other errors consistency from project planning to implementation missing deadlines
Other:	new staff lack of organizational capacity

Annual Performance Report:

Last monthly reports for year due on fifteenth day of following month.

Contract period: January 1st to December 31st.

Program year: September 1st to August 31st.

Need data for 9 months from one program year and three months from another program year. Monthly data extremely important!

Due: 60 days after end of program year

Requires minimum 15 day public comment period.

Lose 30 days awaiting end of year data and comment period.

HMIS Forum

We need to be able to add up and break down data in order to complete reports. Monthly reports, HMIS, CAPER data all must match.

Errors result in lost staff time for both sub-recipients and entitlement jurisdictions.

Inconvenient: Working on statutory deadline requires staff to stop whatever they are doing and get missing or inconsistent information.

Application review and evaluation looks at organization's staff capacity to provide services and to administer HUD Program funds.

FUNDER: HARRIS COUNTY

Esmeralda Gonzalez

Esmeralda.Gonzalez@csd.hctx.net

- Timeliness in entering data/application
- Matching information from HMIS to CSD reports
 - Clients in Program
 - Outreach Services
 - Annual Performance Reports (CoC programs)
 - Item Q7. Data Quality (disability, exit dates, income, destination)

FUNDER: HUD CONTINUUM OF CARE (COC)

Concetta Scerbo

cscerbo@homelesshouston.org

832.531.6024

Data Importance for NOFA

2015 NOFA Scoring Tool								
Weight	Criteria Category	Renewal Evaluation Criteria	Source of Criteria	Calculation	10/Full points	5 Points/10 Points on 15 Scale	0 Points	Total
40%	APR	1. Occupancy / Average Daily Unit Utilization*	Q9	Unit Utilization Rate	50%	80-85%	<80%	10
		2a. PSH Programs: Percentage of stayers who gained or increased earned income from entry to exit	Q24b1 1st Row	%	20%	15-20%	<15%	10
		2b. TH Programs: Percentage of stayers who gained or increased earned income from entry to exit	Q24b1 1st Row	%	40%	24-30%	<24%	
		3a. PSH Programs: Percentage of stayers who gained or increased other (non-employment) income from entry to exit	Q24b1 3rd Row	%	30%	24-20%	<23%	10
		3b. TH Programs: Percentage of stayers who gained or increased other (non-employment) income from entry to exit	Q24b1 3rd Row	%	10%	5-10%	<5%	
		4a. PSH Percentage of leavers with earned income	Q24b2 1st Row	%	20%	15-20%	<15%	10
		4b. TH Percentage of leavers with earned income	Q24b2 1st Row	%	40%	24-30%	<24%	
		5a. PSH Percentage of leavers with cash income other than employment	Q24b2 3rd Row	%	50%	40-50%	<40%	10
		5b. TH Percentage of leavers with cash income other than employment	Q24b2 3rd Row	%	30%	24-20%	<24%	
		6a. PSH Programs: Percentage of participants who remain in PSH or exited to permanent housing ¹	Q35-1	The % of persons who remained in the permanent housing program as of the end of the operating year or exited to permanent housing (subsidized or unsubsidized) during the operating year.	80%	70-75%	<70%	15
		6b. TH Programs: Exits to Permanent Housing ¹	Q35-1	The % of persons who exited to permanent housing (subsidized or unsubsidized) during the operating year.	80%	70-75%	<70%	
		7. Leavers who exit to shelter, streets or unknown	Q29	(Subtotal of Temporary Destinations)/(Total Leavers - Deceased)	<10%	11-15%	>15%	15

Differences in Data

APR scored on based on data in HMIS

Q8. Persons Served

Number of Persons in Households Served During the Operating Year

	Total	Without Children	With Children and Adults	With Only Children	Unknown Household Type
Adults	0	0	0		0
Children	0		0	0	0
Don't Know / Refused	0		0		0
Missing Information	0		0		0
Total	0	0	0	0	0

APR submitted in eSnaps by agency

Number of Persons in Households Served During the Operating Year

	Total	Without Children	With Children and Adults	With Only Children	Unknown Household Type
Adults	14	14	0		0
Children	0		0	0	0
Don't Know/Refused	0	0	0	0	0
Information Missing	0	0	0	0	0
Total	14	14	0	0	0

Differences in Data

Q24b3. Client Cash Income Change - Income Source by Entry and Latest Status / Exit

Income Change by Income Category	Had Income Category at Entry and Did Not Have It at Follow-up/Exit	Retained Income Category But Had Less \$ at Follow-up/Exit as at Entry	Retained Income Category and Same \$ at Follow-up/Exit than at Entry	Retained Income Category and Increased \$ at Follow-up/Exit	Did Not Have the Income Category at Entry and Gained the Income Category at Follow-up/Exit	Did Not Have the Income Category at Entry or at Follow-up/Exit	Total Adults (including those with no income)	Performance Measures: Adults who gained or increased income from entry to follow-up/exit, Average Gain	
Number of Adults with Earned Income	3	1	3	5	11	28	51	16	31.37%
Average Change in Earned Income	-\$839.00	-\$750.00		\$664.00	\$694.00			\$684.64	
Number of Adults with Other Income	0	1	3	7	6	34	51	13	25.49%
Average change in Other Income		-\$64.00		\$94.00	\$2,100.00			\$1,019.99	
Number of Adults Any Income	3	2	6	12	17	11	51	29	56.86%
Average Change in Overall Income	-\$839.00	-\$407.00		\$332.00	\$1,190.00		\$409.00	\$834.97	

APR scored on based on data in HMIS

APR submitted in eSnaps by agency

Income Change by Income Category (Universe: Total Adults with Income Information at Entry and Follow-up/Exit)	Had Income Category at Entry and Did Not Have It at Follow-up/Exit	Retained Income Category But Had Less \$ at Follow-up/Exit Than at Entry	Retained Income Category and Same \$ at Follow-up/Exit as at Entry	Retained Income Category and Increased \$ at Follow-up/Exit	Did Not Have the Income Category at Entry and Gained the Income Category at Follow-up/Exit	Did Not Have the Income Category at Entry or at Follow-up/Exit	Total Adults (including those with No Income)	Performance Measure: Adults who Gained or Increased Income from Entry to Follow-up/Exit	Performance Measure: Adults who Gained or Increased Income from Entry to Follow-up/Exit, Average Gain
Number of Adults with Earned Income (i.e., Employment Income)	4	1	3	4	10	33	55	14	25%
Average Change in Earned Income	(\$930)	(\$246)		\$7,303	\$941				\$2,759
Number of Adults with Other Income	0	0	2	6	9	38	55	15	27%
Average Change in Other Income	\$0	\$0		\$105	\$1,569				\$983
Number of Adults with Any Income (i.e., Total Income)	4	1	5	10	19	16	55	29	53%
Average Change in Overall Income	(\$930)	(\$246)		\$2,984	\$1,238		\$898		\$1,840

Exit Destinations

Permanent Destinations	Total	Institutional Settings	Total
Owned by Client, no Ongoing Subsidy	0	Foster Care	0
Owned by Client, with Ongoing Subsidy	0	Psychiatric Facility	0
Rental by Client, no Ongoing Subsidy	3	Substance Abuse or Detox Facility	0
Rental by Client, VASH Subsidy	0	Hospital (non-Psychiatric)	0
Rental by Client, Other Subsidy	3	Jail or Prison	0
PSH for Homeless Persons	0	Subtotal	0
Living with Family, Permanent	0	Other Destinations	Total
Living with Friends, Permanent	0	Deceased	0
Subtotal	6	Other	3
Temporary Destinations	Total	Don't Know / Refused	0
Emergency Shelter	0	Information Missing	1
TH for Homeless Persons	0	Subtotal	4
Staying with Family, Temporary	0	Total	18
Staying with Friends, Temporary	2		
Place Not Meant For Human Habitation	0		
Safe Haven	0		
Hotel or Motel, Paid by Client	0		
Subtotal	2		

Let's talk about this
OTHER destination...



HMIS Site Visit Scoring

Weight	Criteria Category	Renewal Evaluation Criteria	Source of Criteria	Calculation	For 50/Full Points	For 25 Points	For 0 Points	Total
50%	HMIS** & Data Quality	10. HMIS Data Quality Standards	Site Visit Scoresheet	Site Visit Scoresheet	>9	6-8	<6	50
		11. HMIS Site Visit	Site Visit Scoresheet	Site Visit Scoresheet	>10	6-9	<6	50

- Our first year completing the HMIS Site Visits
- Almost all agencies received full points
- All agencies felt prepared and knew the information

Important (Data) Points

- The RIGHT data DOES matter
- Scoring APR versus eSnaps APR
 - Different time periods
- Coordinated Access Scoring Future
 - Bonus this year...hoping to be more permanent scoring in the future

B1. Coordinated Access Enrollments	Coordinated Access Report	Number of Enrollments through CA / Total Number of Enrollments	90-100%		<90%	5
B2. Program Denials	Coordinated Access Report	Number of Denied Referrals through CA / Number of Referrals through CA	0-15%		>15%	5
B2. Length of Time from Referral to Move-In	Coordinated Access Report	Days from Referral to Move-In	<90 Days		>90 Days	5



SITE VISITS & TRAINING

2016 HMIS Forum Dates

- Mark your calendars!

June 16, 2016

September 15, 2016

December 15, 2016

Same spot – thanks Harris County!