

ELECTRIC PRO UNIT

Electric Mast-Climbing System



Power Unit

- Fully galvanized frame
- 11,000 lb capacity
- Dual electric motors
- Emergency descent feature
- 27' per minute travel speed
- 50' max single unit setup

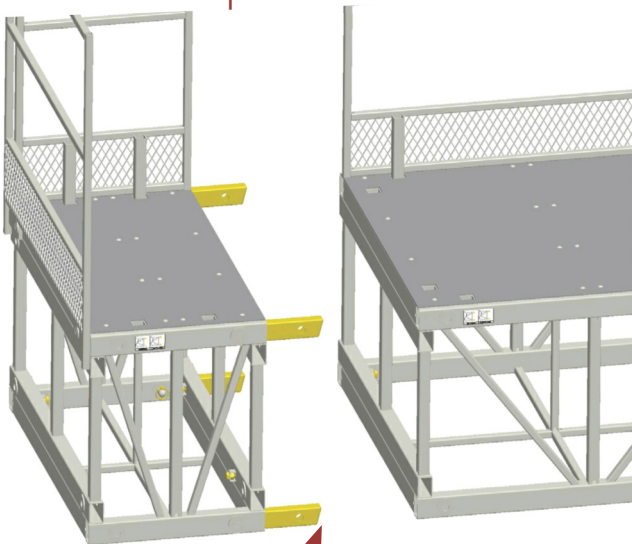


ELECTRIC PRO UNIT



FORWARD EXTENSIONS

The versatile 2' bridge can be used in cantilever mode, or as a forward extension.



Pro Bar System

PRO BAR SYSTEM FOR BRIDGE APPLICATIONS

Pro Bars connect most Electric Pro Unit components and accessories. A zinc plated rectangular tube with three holes and one angular cut, this innovative connecting device allows components to be connected without sagging.

All of our components connect with ease requiring no more than a clevis pin to secure them to each other. No special tools required.

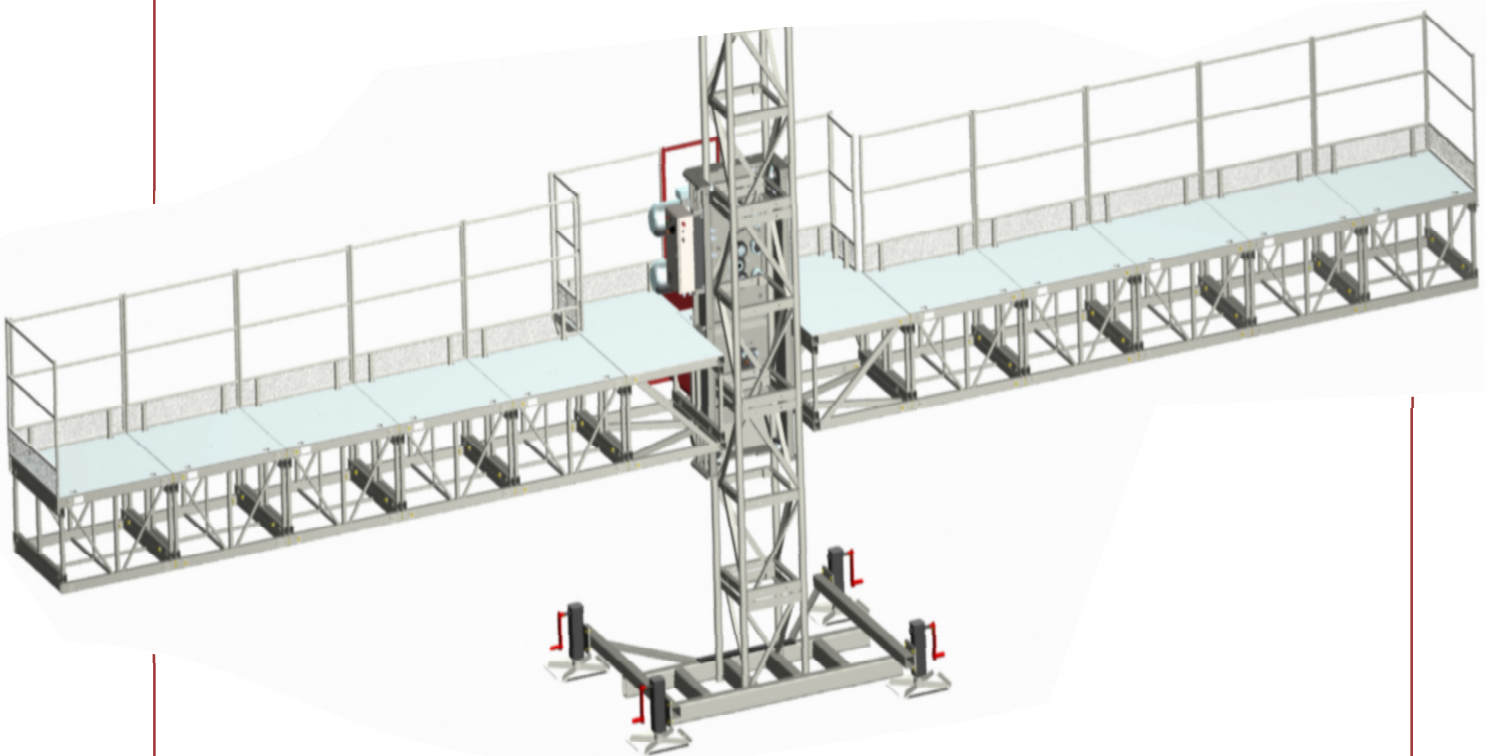
Built in dual
110 outlet box.



Control Panel
Easy operation
user friendly
simple design.

Cantilever Mode

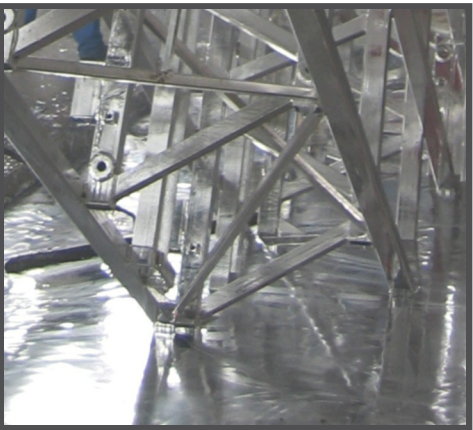
One single mast climber unit can be configured with any combination of bridges up to 50' lateral span.



PREMIER

Scaffold Solutions

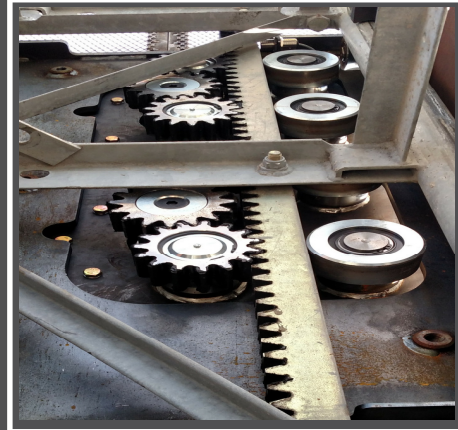
ELECTRIC PRO UNIT



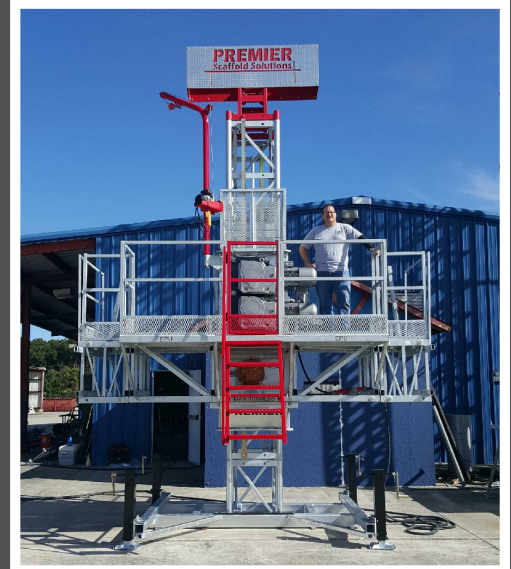
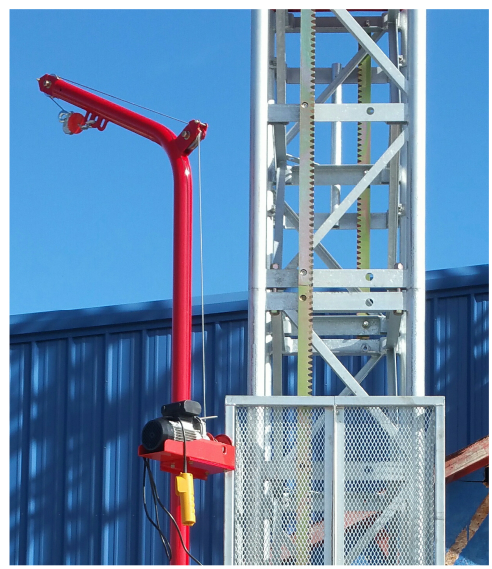
galvanized power unit

EPU can be used for the following:

- stucco and eifs
- restoration
- light and heavy masonry
- multi trades
- windows
- guardrail applications for roofing



rack & pinion drive



Premier Scaffold Solutions
7070 State Route 13
Somerset, OH 43783