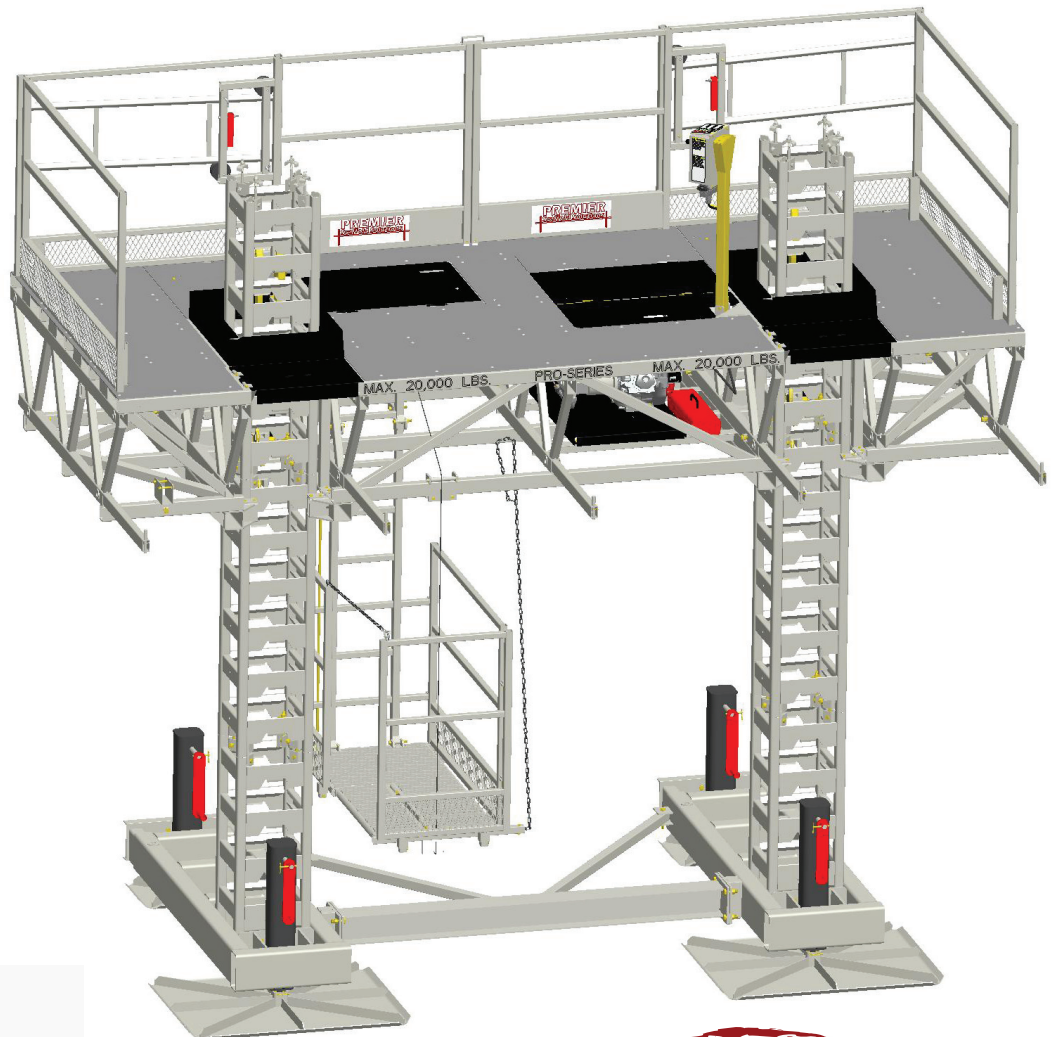


Pro Series - 16'

Hydraulic Mast-Climbing Systems



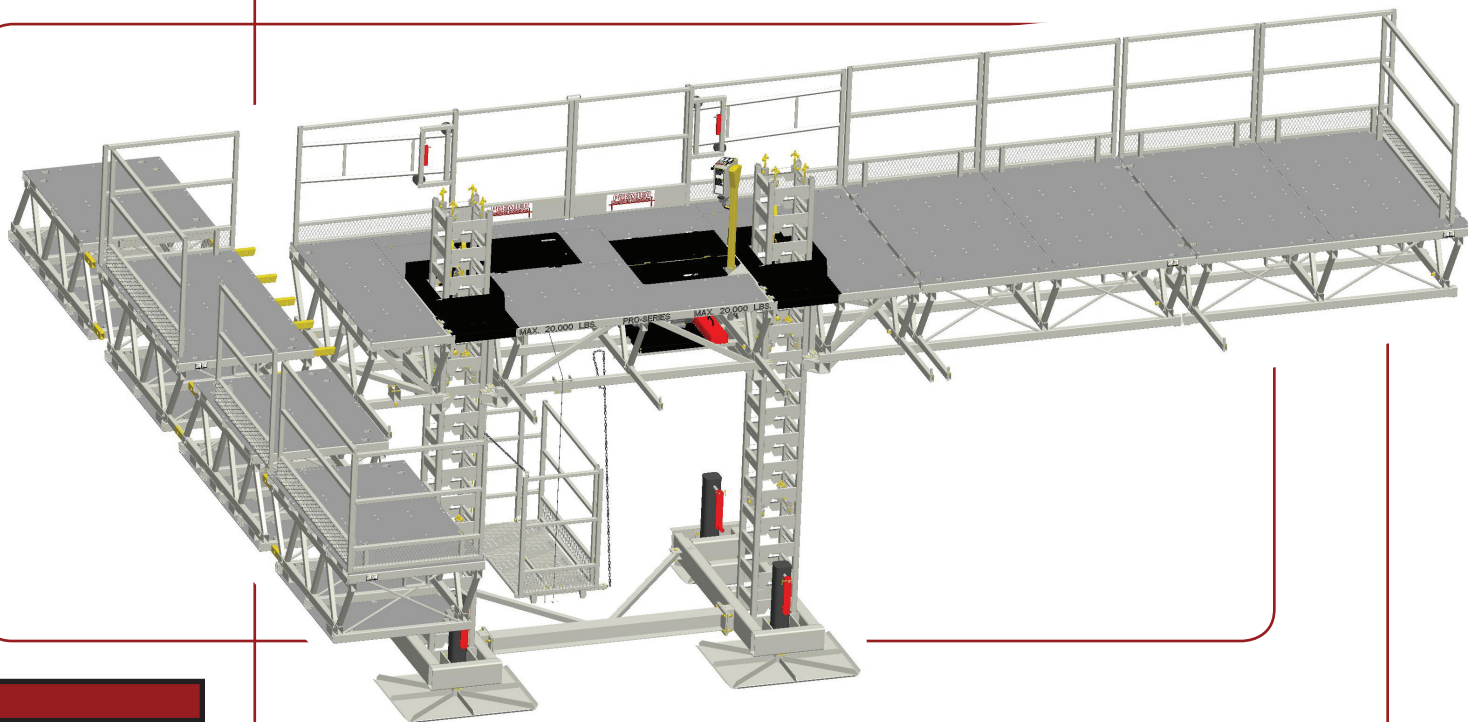
POWER UNIT

- Fully galvanized frame
- Retractable walkway
- 20,000 lb. capacity
- 13 HP electric start Honda engine
- OSHA compliant climbable mast

**MADE
IN THE
USA**

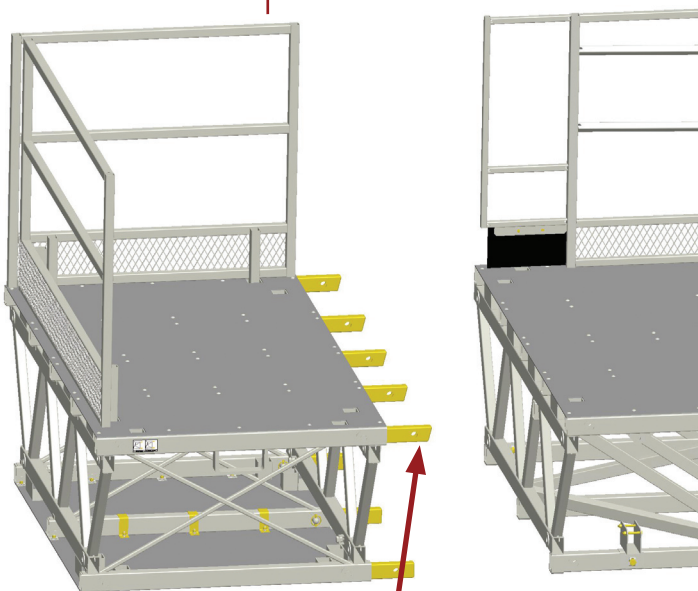
PREMIER
Scaffold Solutions

Pro Series



FORWARD EXTENSIONS

The versatile 4 ft. bridge can be used in cantilever mode, bearing mode or as a forward extension. As a forward extension, it can attach on the end of the Pro Series unit or in the middle.



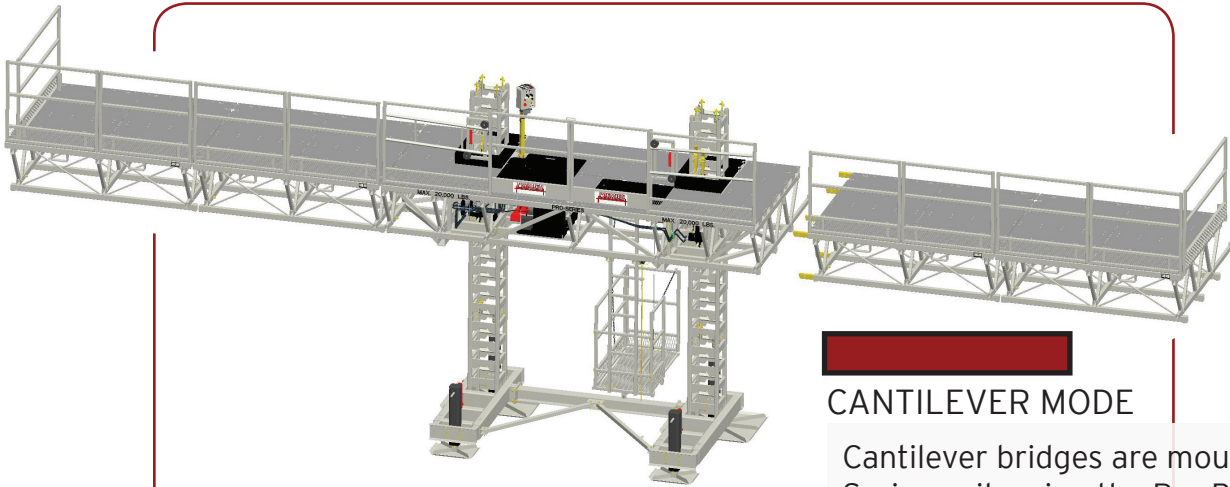
Pro Bar System



PRO BAR SYSTEM FOR BRIDGE APPLICATIONS

Pro Bars connect most Pro Series' components and accessories. A zinc plated rectangular tube with three holes and one angular cut, this innovative connecting device allows components to be connected without sagging.

All of our components connect with ease requiring no more than a clevis pin to secure them to each other. No special tools required.

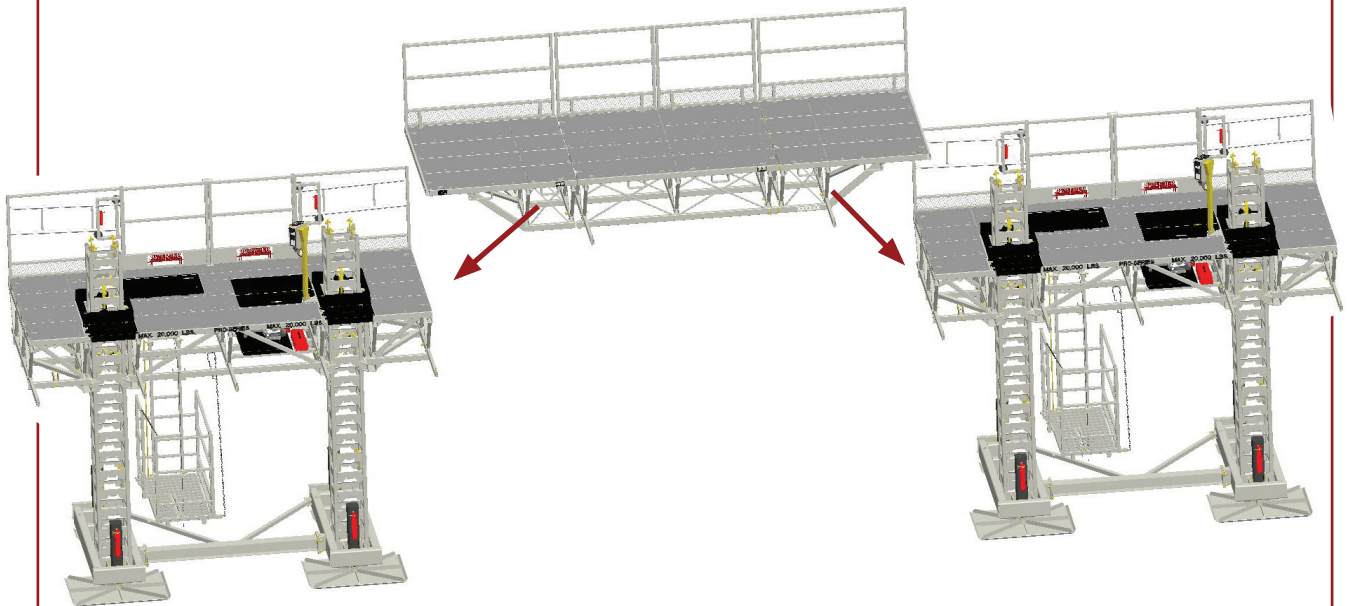


CANTILEVER MODE

Cantilever bridges are mounted to the Pro Series unit, using the Pro Bar System for a width up to 36 ft.

BEARING MODE

Bearing bridges are preassembled and laid out over the ends of two Pro Series units, either in a straight line or by forming an angle with the power units.

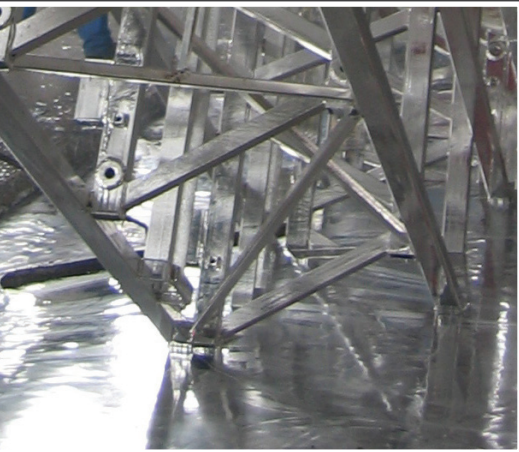


PREMIER SCAFFOLD SOLUTIONS

Pro Series 16' Power Unit Specs

Platform Dimension	7' x 16'
Load Capacity	20,000 lbs.
Tower Height	Up to 250' nominal
Free Standing	25'
Travel Speed	5' per minute
Engine Type	13 HP Honda gas - electric start
Tower	16" x 16" x 60" - 240 lbs.

Pro Series



FEATURES:

- Galvanized Power unit
- Climbable tower
- Power unit in action

The Pro Series consists of work platform sections interlocked with a Pro Bar System and constructed of tube steel trusses supported on two steel tower masts. The towers are assembled from 16 in. x 16 in. x 60 in. sections that are bolted together. They are supported on a base, which has four jacks.

The Pro Series work platforms may be used in a freestanding configuration or in a "tied" mast configuration. The maximum free standing height is 25 ft. In the tied mast configuration, stiff arms are installed between the tower mast and the building structure every 20 ft. In this configuration, the maximum tower height is 250 ft. nominal. The allowable uniform load for the Pro Series is 20,000 lbs.

The ProSeries has many advantages, one of the greatest advantages is modular bridging. The ProSeries uses 8', 6' and 4' bridge lengths to be used in cantilever mode, bearing mode or as forward extensions. Cantilever bridges are mounted to the ProSeries unit, using the Pro Bar system for a width up to 36 ft. on a single unit. Use the preassembled bearing bridges laid out over the ends of two ProSeries units, either in a straight line or by forming an angle with the power units. The versatile 4 ft. bridge can be used in cantilever mode, bearing mode or as a forward extension. As a forward extension, it can attach on the end of the ProSeries unit or in the middle.

Premier Scaffold Solutions
2320 W. Orange Blossom Trail
Apopka, FL 32712