

Insul-8 Mobile Electrification

◆ Cable & Hose Reels ◆ Conductor Bar ◆ Festoon ◆ Pendants ◆
◆ Radio Controls ◆ Slip Rings ◆

Solutions From A Single Source

Hose Reels

Hose Management Systems



For Hose Management of:

- Manufacturing
- Automotive Service Centers
- Fleet Line
- Material Handling



www.insul-8.com

Header Text

Sub Header Text



Since our inception in 1902, Insul-8 Corporation's parent company, Delachaux S.A., has been a leading international presence in the business of providing mobile electrification. As the Delachaux arm in North and South America, Insul-8 Corporation (formerly sister companies Insul-8 and Industrial Electric Reels, Inc. - a.k.a. IER) carries on this tradition of innovation and excellence. Insul-8 and IER became part of the Delachaux Group in 1975 and officially became one company on December 31, 1996. Each company has its own rich history.

You'll find Insul-8 products in use everywhere from irrigation systems and manufacturing plants in the heartland of the United States to public transportation systems in Malaysia.

Industrial Electric Reels, Inc., began in 1924 with the founding of Industrial Electric Works (IEW), an electrical contractor based in Omaha, Nebraska. After World War II, IEW began the manufacture of electric cable reeling equipment and started IER as an operating division in 1948. IER's first cable reel, the hand rewind Series 102 PORT-O-REEL, was quickly followed by light-duty spring retractable cable reels. IER pioneered the development of cable reeling devices and slip rings. Soon the business expanded to larger, custom built motor driven reels and custom engineered slip rings. IER's reputation spread as a quality manufacturer of reels running the gamut from small commercial duty reels to large custom built reels for the most demanding applications such as container cranes, stacker/reclaimers and bulk material ship loaders and unloaders.

Insul-8 Corporation has been a pioneer in providing safety-covered metal conductor systems for the material handling industry since 1944. Insul-8 was the first company to design and produce a stainless steel capped aluminum conductor and the only manufacturer of such a product for almost 20 years. Today, there are over 20 million meters (nearly 12,500 miles) of Insul-8 contact conductors and tens of thousands of collecting devices throughout the world. Every major port in the United States currently uses Insul-8's aluminum/stainless steel contact conductors on container cranes due to the dependability of the bar under the most severe conditions. Insul-8's festoon systems range from the smallest box-track systems to our most rugged Heavy-Duty Festoon. Insul-8's festoons are known for their safe and efficient operation in which large numbers of conductors can be handled in minimum space.

Insul-8 has been in the business of supplying power from stationary sources to mobile systems for 60 years. Insul-8's cable reels, slip rings, conductor bar, festoon systems, pendants and radio controls are used in a wide variety of applications ranging from material handling and mass transit systems to water treatment plants and performing arts theaters.

As it has been for the last 60 years and always will be, "conducting" business will continue to be our only business.

In December 1997, after a nine month endeavor, Insul-8 Corporation became ISO 9001 certified for the design and manufacture of our entire line of mobile electrification products in both of our U.S.A. plants in Omaha, Nebraska, and Harlan, Iowa.

- ◆ cable and hose reels ◆ conductor bar systems ◆ cable festoon systems ◆
- ◆ slip rings ◆ pendant stations ◆ radio controls ◆

www.insul-8.com



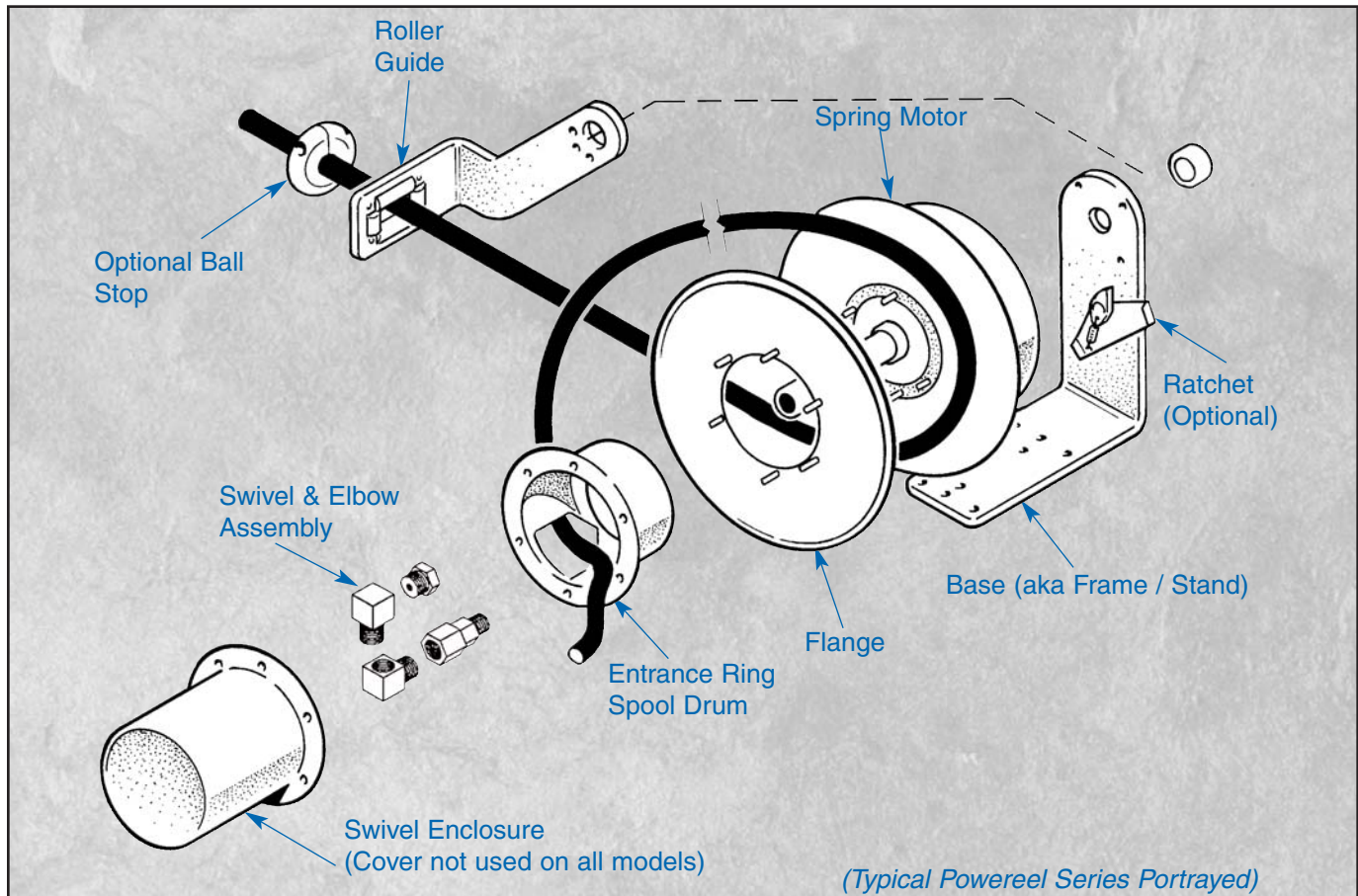
Specifications may change without notice. All products F.O.B. Omaha, NE, or Harlan, IA, unless otherwise specified.

Table of Contents

Hose Reel Basics.....	3-6
Components of a Hose Reel.....	3
How to Select the Reel.....	4
Why do you need a Hose Reel.....	4
How to order a Hose Reel.....	4
Determining Hose Requirements	5-7
Hose Data Charts.....	5
Air Flow Chart.....	6
Celsius / Farenheit Conversion Chart.....	7
Metric Conversion Chart.....	7
Hose Reel Descriptions.....	8
Hose Reel Selection Chart.....	9-10
Air / Water.....	9
Oxygen / Accetylene / Hydraulic.....	10
Part Number Decoders.....	11
Hose Reel Dimensions.....	12-14
1400 Series.....	12
D, E, & F Series 19" Reel.....	12
D, E, & F Series 24" & 32" Reels.....	13
H Series (One Motor).....	14
H Series (Two Motor).....	14
Hose Reel Options.....	15-24
Quick Reference Chart.....	15
Ball Stops.....	16
Hose & Cable Grips.....	16
Inlet Hose Assemblies.....	16
Limit Switches.....	17
Marine Duty Option.....	17
Mill Duty Option.....	17
Pivot Bases.....	18
Quick Change Motor.....	19
Ratchets.....	20
ReelSafe.....	20
Roller Guides	21-23
Swivel Base / Pivot Base.....	24
Hand Wound Reels.....	25

Hose Reel Basics

Components of A Hose Reel



Five Basic Parts

Base/Stand	Supports and mounts the reel.
Spring Motor	Motor which rotates the spool.
Spool	Composed of a drum and two Flanges.
Swivel	Transfers fluid/gas from a fixed source through a rotating source.
Roller Guide	Guides the hose during payout and rewind.

Definition of Terms

Active Length	The difference between the minimum and maximum payout of hose. (See " Payout " below.)
Safety Wrap	Hose that stays on the reel at maximum payout (Usually 2 complete wraps.)
Sag Factor	The effect of gravity on actual travel length during stretch applications. (6%-10%)
Lift Height	The distance between where the hose lays to the center line of the spool.
Payout	Pulling hose out of the reel.
Retract or Rewind	Rewinding hose back into the reel.

Hose Reel Basics

How to Select the Right Hose Reel

In order to use the **Hose Reel Selection Chart**, first determine your mechanical, electrical and hose length requirements. Follow these three steps to make sure you get the best reel for your application needs. **Your local representative or the sales team at our factory are glad to help if you need additional assistance.**

Step 1 - Mechanical Requirements:

- How will the reel be used? Stretch, Lift, Drag or Retrieve?
- What type of environment will the reel be located in?
(indoors, outdoors, corrosive environment.)
- What is the duty cycle? (How often will the reel payout and Retract?)
- What is the maximum speed of equipment? (Maximum recommended speed is 150 feet per minute.)

Step 2 - Hose Requirements:

(See Determining Hose Requirements pages 5-7 for help.)

- How much PSI will the hose reel be expected to handle.
- What will the reel be required to handle: air/water?
- What hose ID is required?
(For assistance, please refer to Hose Data Charts on pages 5 & 6.)

Step 3 - Hose Length Requirements:

Add: Active Length - The difference between the minimum and maximum operating payout.

Plus: Inactive Length - Hose that always stays out of the reel, even at full retraction.

Plus: SafetyWrap* - Hose that stays on the reel a maximum payout. - See note below for details.

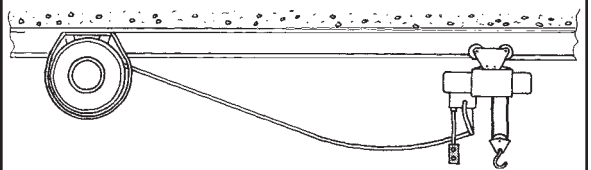
Plus: Sag Factor (Stretch Only) - Add 10% to Active and Inactive Length total.

Plus: Lift height (Drag/Retrieve) - The distance between where the hose lays up to the spool center line. Max 4'.

Plus: Hook up Length - Hose required for termination at both ends - 2-3' on spool end.

***Note:** 1400 Series = 2', 1900/2400 Series = 5', D,E,F & H Series = 5-7', HW 20/30 = 2', and HW40 = 5'

Stretch



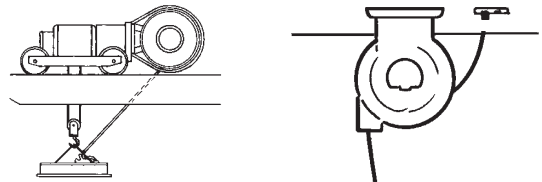
The hose is "stretched" horizontally and is unsupported. The reel may be stationary mounted or mounted onto moving equipment. Hose is pulled out by machine. An extra 6% - 10% in hose beyond active travel is required for hose sag.

Drag



The reel needs to "drag" the hose through supports or along the ground horizontally. The reel is usually stationary. Hose can be pulled out by hand or by machine. Note: This application is hardest on hose life.

Lift



The reel needs to "lift" the hose vertically. The reel is usually stationary. Hose is pulled out of the reel by machine or by hand (as with an overhead supply source.)

Why do you need a Hose Reel?

- **Make Shop, Garage or Other Work Areas Safer:** A hose left on the ground can be tripped over by employees or customers, potentially causing serious injury. The 1400 Series Hose Reel keeps hose neatly stored and ready to use.
- **Eliminates Hose Handling Problems:** Save time and increase efficiency. Grab the hose and go. It's just as easy to reel in. *Remember: The 1400 Series hose reel is 100% spring retractable.*
- **Extend Hose Life:** Save time and money. Reduces costly repairs and downtime when hoses are damaged while left on the ground.

How to Order a Hose Reel

Determine the following:

- 1) What will you put through the hose (air, water, etc)?
- 2) What is the maximum pressure (in P.S.I.) needed for operation?
- 3) How will you be using the hose? (Will it be stretched, lifted/dragged or retrieved?)
- 4) How far out will the hose need to retract?
- 5) Is a ball stop required for the application?
- 6) Is an inlet hose assembly needed to connect hose reel and source of supply? (Highly recommended.)

Don't see what you need? Call us!

Determining Hose Requirements

Hose Data

Hose Data - Air/Water								
Modified vinyl w/two textile spirals & rubber modified non marking thermoplastic cover.								
ID In. (mm)	OD In. (mm)	Braid	Max. working pressure PSI (kg/cm2)	Color	Weight per 100 Ft. lbs. (kg)	Max. available length ft. (approx. M)	Min. Bend Radius In. (mm)	Operating Temp.
.25 (6.4)	.50 (12.7)	1	300 (21)	Blue	10 (4.5)	112(34)	3 (76.2)	-20°F (-29°C) to 180°F (82°C)
.38 (9.5)	.69 (17.5)	1	300 (21)	Blue	17 (7.7)	112 (34)	4 (101.6)	
.50 (12.7)	.88 (22.4)	2	300 (21)	Blue	27 (2.2)	112 (34)	5 (127)	
.75 (19.1)	1.25 (31.8)	2	300 (21)	Red or Blue	51 (23.1)	112 (34)	6 (152.4)	
1.0 (25.4)	1.50 (31.8)	2	300 (21)	Red or Blue	63 (28.6)	112 (34)	8 (203.2)	

Hose Data - Oxygen-Acetylene							
ID In. (mm)	OS In. (mm)	Braid	Max. working pressure PSI (kg/cm2)	Color	Weight per 100 ft. lbs. (kg)	Max. available length ft. (m)	Min. Bend Radius In. (mm)
.25 (6.4)	.59 x 1.18 (15 x 30)	2	300 (21)	Red & Green	28 (12.7)	100 (30.5)	2 (50.8)
.31 (7.9)	.66 x 1.32 (16.8 x 33.5)		250 (18)		32 (14.5)		2 (50.8)
.38 (9.5)	.72 x 1.44 (18.3 x 36.6)		250 (18)		36 (16.3)		3 (76.2)

Hose Assemblies (Air/Water)									
.25" ID w/ mNPT Fittings		.38" ID w/ mNPT Fittings		.50" ID w/ mNPT Fittings		.75" ID w/ mNPT Fittings		1.0" ID w/ mNPT Fittings	
Footage	Part #	Footage	Part #	Footage	Part #	Footage	Part #	Footage	Part #
22'	34437	22'	34438	22'	34439	22'	06370	22'	06340
27'	34437B	37'	34438B	27'	34439B	27'	06308	27'	06372
32'	34437C	32'	34438C	32'	34439C	32'	06317	32'	00206
37'	34437L	37'	34438L	37'	34439F	37'	06371	37'	06365
42'	34437D	42'	34438D	42'	34439D	42'	00208	42'	00212
47'	34437M	47'	34438M	47'	34439G	47'	06336	47'	00209
52'	34437E	52'	34438E	52'	34439E	52'	06343	52'	00216
62'	34437F	62'	34438F	62'	34439H	62'	06355	62'	06337
72'	34437G	72'	34438G	72'	34439J	77'	00159	72'	06373
82'	34437H	82'	34438H	82'	34439K	82'	06339	82'	06374
92'	34437J	92'	34438J	92'	34439L	92'	06356	92'	06375
102'	34437K	102'	34438K	102'	34439M	102'	06300	102'	06324
112'	34437N	112'	34438N	112'	34439N	112'	06333	112'	100109

Hose Assemblies (Oxygen / Acetylene)									
Hose ID x OD	20 (6.1)	30 (9.2)	40 (12.2)	50 (15.3)	60 (18.3)	70 (21.4)	80 (24.4)	90 (27.5)	100 (30.5)
14 x 19.32" 5/16 x 21/32" 3/8 x 23/32"	*Price to be assigned at time of quote & Part Number at time of order.								

Determining Hose Requirements

Air Flow Chart

Discharge of Air Through an Orifice (In cu. ft. of free air per min. at atmospheric pressure of 14.7 psi and 70°F.)											
Gauge Pressure before orifice PSI	Diameter of orifice, in.										
	1/64	1/32	1/16	1/8	1/4	3/8	1/2	5/8	3/4	7/8	1
	Discharge, cu. ft. free air per min.										
1	.028	.112	.450	1.80	7.18	16.2	28.7	45.0	64.7	88.1	115
2	.040	.158	.633	2.53	10.1	22.8	40.5	63.3	91.2	124	162
3	0.48	.194	.775	3.10	12.4	27.8	49.5	77.5	111	152	198
4	.056	.223	.892	3.56	14.3	32.1	57.0	89.2	128	175	228
5	.062	.248	.993	3.97	15.9	35.7	63.5	99.3	143	195	254
6	.068	.272	1.09	4.34	17.4	39.1	69.5	109	156	213	278
7	.073	.293	1.17	4.68	18.7	42.2	75.0	117	168	230	300
9	.083	.331	1.32	5.30	21.1	47.7	84.7	132	191	260	339
12	.095	.379	1.52	6.07	24.3	54.6	97.0	152	218	297	388
15	.105	.420	1.68	6.72	26.9	60.5	108	168	242	329	430
20	.123	.491	1.96	7.86	31.4	70.7	126	196	283	385	503
25	.140	.562	2.25	8.98	35.9	80.9	144	225	323	440	575
30	.158	.633	2.53	10.1	40.5	91.1	162	253	365	496	648
35	.176	.703	2.81	11.3	45.0	101	180	281	405	551	720
40	.194	.774	3.10	12.4	49.6	112	198	310	446	607	793
45	.211	.845	3.38	13.5	54.1	122	216	338	487	662	865
50	.229	.916	3.66	14.7	58.6	132	235	366	528	718	938
60	.264	1.06	4.23	16.9	67.6	152	271	423	609	828	1,082
70	.300	1.20	4.79	19.2	76.7	173	307	479	690	939	1,227
80	.335	1.34	5.36	21.4	85.7	193	343	536	771	1,050	1,371
90	.370	1.48	5.92	23.7	94.8	213	379	592	853	1,161	1,516
100	.406	1.62	6.49	26.0	104	234	415	649	934	1,272	1,661
110	.441	1.76	7.05	28.2	113	254	452	705	1,016	1,383	1,806
120	.476	1.91	7.62	30.5	122	274	488	762	1,097	1,494	1,951
125	.494	1.98	7.90	31.6	126	284	506	790	1,138	1,549	2,023

Based on 100 per cent coefficient of flow. For well-rounded entrance multiply values by 0.97. For sharp-edged orifices a multiplier of 0.65 may be used.

This table will give approximate results only. For accurate measurements see ASME Power Test Code, Velocity Volume Flow Measurement.

Values for pressures from 1 to 15 psig calculated by standard adiobotic formula.

Values for pressures above 15 psig calculated by approximate formula proposed by S. A Moss: $w = 0.5303 aCp: / \sqrt{T}$; where w = discharge in lb. per sec., a = area of orifice in sq. in., C = coefficient of flow, p = upstream total pressure in psi, and T = upstream temperature in deg F abs.

Values used in calculating above table were $C = 1.0$, p = gauge pressure + 14.7 psi, T = 530 F abs.

Weights (w) were converted to volumes using density factor of 0.07494 lb. per cu. ft. This is correct for dry air at 14.7 psi and 70F.

Formula cannot be used where p is less than two times the barometric pressure.

Reprinted from Compressed Air & Gas Handbook.

Don't see what you need? Call us!

Page 6

Determining Hose Requirements

Celsius / Farenheit

Temperature Conversion Table

1. Locate known temperature in °C/°F Column.
2. Read converted temperature in °C or °F Column.

°C	°C/°F	°F	°C	°C/°F	°F	°C	°C/°F	°F
-45.4	-50	-58	15.5	60	140	76.5	170	338
-42.7	-45	-49	18.3	65	149	79.3	175	347
-40	-40	-40	21.1	70	158	82.1	180	356
-37.2	-35	-31	23.9	75	167	85	185	365
-34.4	-30	-22	26.6	80	176	87.6	190	374
-32.2	-25	-13	29.4	85	185	90.4	195	383
-29.4	-20	-4	32.2	90	194	93.2	200	392
-26.6	-15	5	35.0	95	203	96.0	205	401
-23.8	-10	14	37.8	100	212	98.8	210	410
-20.5	-5	23	40.5	105	221	101.6	215	419
-17.8	0	32	43.4	110	230	104.4	220	428
-15	5	41	46.1	115	239	107.2	225	437
-12.2	10	50	48.9	120	248	110.0	230	446
-9.4	15	59	51.6	125	257	112.8	235	455
-6.7	20	68	54.4	130	266	115.6	240	464
-3.9	25	77	57.1	135	275	118.2	245	473
-1.1	30	86	60.0	140	284	120.9	250	482
1.7	36	95	62.7	145	293	123.7	255	491
4.4	40	104	65.5	150	302	126.5	260	500
7.2	45	113	68.3	155	311	129.3	265	509
10	50	122	71.0	160	320	132.2	270	518
12.8	55	131	73.8	165	329	135	275	527

$$^{\circ}\text{F} = (9/5 \times ^{\circ}\text{C}) + 32 \quad ^{\circ}\text{C} = 5/9 (^{\circ}\text{F} - 32)$$

Metric Conversion

Celsius° / Farenheit°

For quick and easy temperature conversion, please use the **Celsius / Farenheit** crossover chart provided above.

To Obtain	Multiply
Millimeters	Inches x 25.4
Inches	Millimeters x 0.0394
Meters	Feet x .3048
Feet	Meters x 3.281
Square Centimeters	Square Inches x 6.45
Square Inches	Square Centimeters x 0.155
Kilograms	Pounds x 0.4536
Pounds	Kilograms x 2.205
Pounds Per Suare Inch	Bars x 14.5

Hose Reel Descriptions

About our Hose Reels

Series 1400 Hose Reels are designed for 100% unassisted spring retention using direct drive (1:1 ratio) canisterized spring motor. These reels will accommodate up to 60' lengths up to 300 PSI Air/Water hose.

Reel Features: Indoor/Outdoor use. Life time lubricated spring cartridge, rugged fabricated steel construction, durable safety yellow polyurethane powder coating, ratchet assembly (easy disengagement for constant tension requirements), 12 position 4-roller hose guide.



Series 1900 - 4200 Hose Reels are designed for 100% unassisted spring retention using direct drive (1:1 ratio) canisterized spring motor. These reels will accommodate up to 100' lengths up to 300 PSI Air/Water hose with 1/4" to 1.0" I.D.'s. Reel Features: Indoor/Outdoor use. Life time lubricated spring cartridge, rugged fabricated steel construction, durable safety yellow polyurethane powder coating, 12 position 4-roller hose guide.

SERIES D, E and F Hose Reels are designed using a direct drive (1:1 ratio) spring motor. These reels will accommodate up to 100' lengths up to 300 P.S.I. Air/Water hose. Reel features: Indoor/Outdoor use. Rugged fabricated steel construction, Durable gray Epoxy finish. Adjustable 4 roller hose guide & Guide rails.

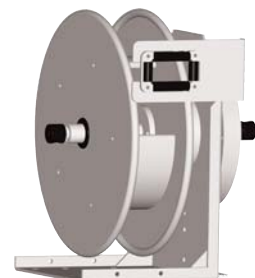
Options: Ratchet, Stainless steel fasteners, 330 degree pivots, 360 degree continuous swivels. Marine duty (IEEE-45) USCC ABS, & Spool lock. Customizing available.



Series H Hose Reels are designed using spring motor with a variety of drive ratios. These reels will accommodate up to 100' lengths up to 300 P.S.I. Air/Water hose. Reel features: Indoor/Outdoor use, Rugged fabricated steel construction, Durable gray Epoxy finish, Adjustable 4 roller guide & Guide rails.

Options: Stainless steel fasteners, 330 degree pivots, Spool lock, Mill duty & Marine duty (IEEE-45) USCC ABS. Customizing available.

Series 1900 - 4200 Dual Hydraulics or OXY/ACC Hose Reels are designed for 100% unassisted spring retention using direct drive (1:1 ratio) canisterized spring motor. These reels will accommodate up to 100' lengths up to 5000 PSI Air/Water hose with 1/4", 3/8" & 1/2" I.D.'s. Reel Features: Indoor/Outdoor use. Lifetime lubricated spring cartridge, rugged fabricated steel construction, durable safety yellow polyurethane powder coating, 12 position 4-roller hose guide.



Series 20-40 Hand Rewind Reels available in portable and stationary design.

Don't see what you need? Call us!

Hose Reels Selection Chart

1400, 1900-2400, D, E, F & H Series (Air / Water)

Air Hose ID	Lift & Drag Application 300 psi Air Hose Length feet (meters)								
	20 (6.1)	30 (9.2)	40 (12.2)	50 (15.3)	60 (18.3)	70 (21.4)	80 (24.4)	90 (27.5)	100 (30.5)
1/4"	14725000201*	14725000301*	14725000401*	14725000501*	14725000601*	DQDH4A	DQDH4A	DBDH4B	DBDH4B
3/8"	14738000201*	14738000301*	14738000401*	14738000501*	ERCH6A	EQDH6B	EQDH6B	ECDH6B	ERDH6B
1/2"	14750000201*	14750000301*	14750000401*	ERCH8B	ERCH8B	ERCH8B	ESDH8B	ESDH8B	ESDH8B
3/4"	EDCH12B	FEBH12B	FEBH12B	FUCH12B	FUCH12B	FECH12C	FECH12C	HE41BH12C	HE51BH12C
1.0"	EBBH16CA	FSBH16CA	FSBH16CA	HF31BH16CA	HF31BH16CA	HF41CH16DA	HF51DH16DA	HV51EH16DA	HV71FH16DA

Air Hose ID	Stretch Application 300 psi Air Hose Length feet (meters)								
	20 (6.1)	30 (9.2)	40 (12.2)	50 (15.3)	60 (18.3)	70 (21.4)	80 (24.4)	90 (27.5)	100 (30.5)
1/4"	14725000202*	14725000302*	14725000402*	14725000502*	14725000602*	DQDH4A	DQDH4A	DBDH4B	EBDH4B
3/8"	14738000202*	14738000302*	14738000402*	14738000502*	ERCH6A	EQDH6B	EQDH6B	ECDH6B	ERDH6B
1/2"	14750000202*	14750000302*	14750000402*	ERCH8B	ERCH8B	FRCH8B	FSDH8B	FSDH8B	FSDH8B
3/4"	EDCH12B	FEBH12B	FEBH12B	FUCH12B	HU31BH12B	HE31BH12C	HE41CH12C	HE51CH12C	HE61DH12C
1.0"	FBBH16CA	FSBH16CA	HD21BH16CA	HD31DH16CA	HT41EH16CA	HT51FH16DA	HF51DH16DA	HV81JH16DA	HV52DH16DA

Water Hose ID	Lift & Drag Application 300 psi Water Hose Length feet (meters)								
	20 (6.1)	30 (9.2)	40 (12.2)	50 (15.3)	60 (18.3)	70 (21.4)	80 (24.4)	90 (27.5)	100 (30.5)
1/4"	14725000201*	14725000301*	14725000401*	14725000501*	14725000601*	DQDH4A	DQDH4A	DBDH4B	DBDH4B
3/8"	14738000201*	14738000301*	14738000501*	14738000501*	ERCH6A	EQDH6B	EQDH6B	ECDH6B	ERDH6B
1/2"	14750000201*	14750000301*	14750000401*	ERCH8B	ERCH8B	ERCH8B	FSDH8B	FSDH8B	FSDH8B
3/4"	EDCH12B	FEBH12B	FEBH12B	FUCH12B	FUCH12B	HE31BH12C	HE41BH12C	HE51CH12C	HE61DH12C
1.0"	FBBH16CA	FSBH16CA	HD21CH16CA	HT31DH16CA	HT41EH16CA	HT51FH16DA	HV24CH16DA	HV62FH16DA	HV52DH16DA

Water Hose ID	Stretch Application 300 psi Water Hose Length feet (meters)								
	20 (6.1)	30 (9.2)	40 (12.2)	50 (15.3)	60 (18.3)	70 (21.4)	80 (24.4)	90 (27.5)	100 (30.5)
1/4"	14725000202*	14725000302*	14725000402*	14725000502*	DBCH4A	DQDH4A	EQDH4A	EBDH4B	EBDH4B
3/8"	14738000202*	14738000302*	14738000402*	ERCH6A	ERCH6A	EQDH6B	EQDH6B	FCDH6B	ERDH6B
1/2"	14750000202*	14750000302*	ESCH8A	ERCH8B	FRCH8B	FRCH8B	FSDH8B	HS51BH8B	HS61BH8B
3/4"	EDCH12B	FEBH12B	FEBH12B	HU31BH12B	HU41CH12B	HE51DH12C	HE61EH12C	HE81FH12C	HE91GH12C
1.0"	FBBH16CA	HS21CH16CA	HD31EH16CA	HD41GH16CA	HT61JH16CA	HT42DH16DA	HT52EH16DA	HV62FH16DA	HV72GH16DA

(*) Available preassembled with hose i.e. 147250003011 includes 30 feet of .25" hose. Ratchets are standard on 1400 (aka P-Series) with lock out feature, optional on all other Models except H Series hose reels. D, E, F & H models available with marine duty option. "H" reels available with quick change spring motor w/ tensioner.

Lift and Drag applications require an additional 5 feet of hose for hook up and safety wrap.

Stretch application will require hose footage consisting of active travel plus 10% and additional 5' for sag/hookup/safety wrap.

No installation charge on hose purchased from Insul-8.

Hose Reels Selection Chart

(Oxygen/Acetylene/Hydraulic) 1900-2400 Series

Dual Oxygen / Acetylene Hose Reels (Low Pressure)

Oxy-Ace Hose ID x OD	19-2400 Series Lift & Drag Application 250 psi Oxygen-Acetylene Hose Length feet (meters)								
	20 (6.1)	30 (9.2)	40 (12.2)	50 (15.3)	60 (18.3)	70 (21.4)	80 (24.4)	90 (27.5)	100 (30.5)
1/4 x 19/32	19725420201*	19725420301*	19725420401*	19725420501*	19725420601*	19725420701*	19725420801*	19725420901*	19725421001*
3/8 x 23/32	19738420201*	19738420301*	19738420401*	19738420501*	19738420601*	19738420701*	19738420701*	24738420901*	24738421001*

Oxy-Ace Hose ID x OD	19-2400 Series Stretch Application 250 psi Oxygen-Acetylene Hose Length feet (meters)								
	20 (6.1)	30 (9.2)	40 (12.2)	50 (15.3)	60 (18.3)	70 (21.4)	80 (24.4)	90 (27.5)	100 (30.5)
1/4 x 19/32	19725420202*	19725420302*	19725420402*	19725420502*	19725420602*	19725420702*	19725420802*	19725420902*	19725421002*
3/8 x 23/32	19738420202*	19738420302*	19738420402*	19738420502*	19738420602*	19738420702*	19738420802*	24738420902*	24738421002*

Dual Hydraulic Hose Reels

HYD Hose ID	NPT Size	Lift & Drag Application 3000 psi Dual Hydraulic Hose Length feet (meters)								
		20 (6.1)	30 (9.2)	40 (12.2)	50 (15.3)	60 (18.3)	70 (21.4)	80 (24.4)	90 (27.5)	100 (30.5)
1/4"	.25"	19725220201*	19725220302*	19725220402*	19725220501*	19725220602*	19725220701*	19725220801*	19725220901*	19725221001*
3/8"	.38"	19738220201*	19738220302*	19738220402*	1973220502*	19738220602*	24738220701*	24738220801*	24738220901*	24738221001*
1/2"	.50"	19750220201*	19750220302*	19750220402*	24750220502*	32750220602*	24750220701*	32750220801*	32750220901*	32750221001*

HYD Hose ID	NPT Size	Stretch Application 3000 psi Dual Hydraulic Hose Length feet (meters)								
		20 (6.1)	30 (9.2)	40 (12.2)	50 (15.3)	60 (18.3)	70 (21.4)	80 (24.4)	90 (27.5)	100 (30.5)
1/4"	.25"	19725220202*	19725220302*	19725220402*	19725220502*	19725220602*	19725220702*	24725220802*	32725220902*	32725221002*
3/8"	.38"	19738220202*	19738220302*	19738220402*	19738220502*	19738220602*	24738220702*	32738220802*	32738220902*	32738221002*
1/2"	.50"	19750220202*	19750220302*	19750220402*	24750220502*	32750220602*	32750220702*	32750220802*	32750220902*	32750221002*

Single Hydraulic Hose Reels

HYD Hose ID	NPT Size	Lift & Drag Application 3000 psi Single Hydraulic Hose Length feet (meters)								
		20 (6.1)	30 (9.2)	40 (12.2)	50 (15.3)	60 (18.3)	70 (21.4)	80 (24.4)	90 (27.5)	100 (30.5)
1/4"	.25"	19725210201*	19725210301*	19725210401*	19725210501*	19725210601*	19725210701*	19725210801*	19725210901*	19725211001*
3/8"	.38"	19738210201*	19738210301*	19738210401*	19738210501*	19738210601*	19738210701*	19738210801*	19738210901*	19738211001*
1/2"	.50"	19750210201*	19750210301*	19750210401*	19750210501*	19750210601*	19750210701*	19750210801*	24750210901*	24750211001*

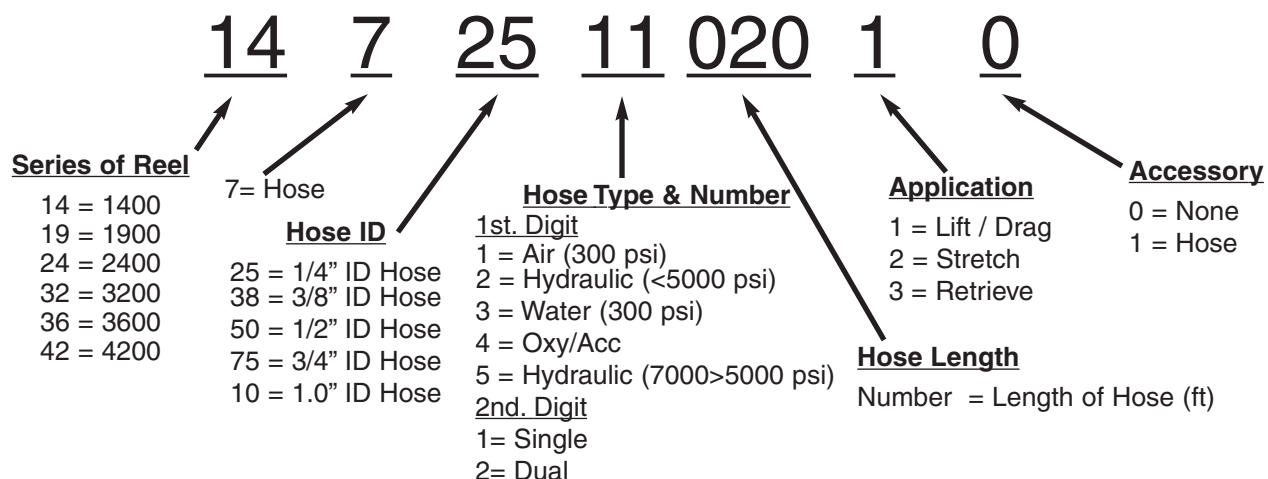
HYD Hose ID	NPT Size	Stretch Application 3000 psi Dual Hydraulic Hose Length feet (meters)								
		20 (6.1)	30 (9.2)	40 (12.2)	50 (15.3)	60 (18.3)	70 (21.4)	80 (24.4)	90 (27.5)	100 (30.5)
1/4"	.25"	19725210202*	19725210302*	19725210402*	19725210502*	19725210602*	19725210702*	19725210802*	19725210902*	19725211002*
3/8"	.38"	19738210202*	19738210302*	19738210402*	19738210502*	19738210602*	19738210702*	19738210802*	19738210902*	19738211002*
1/2"	.50"	19750210202*	19750210302*	19750210402*	19750210502*	19750210602*	19750210702*	19750210802*	32750210902*	32750211002*

Don't see what you need? Call us!

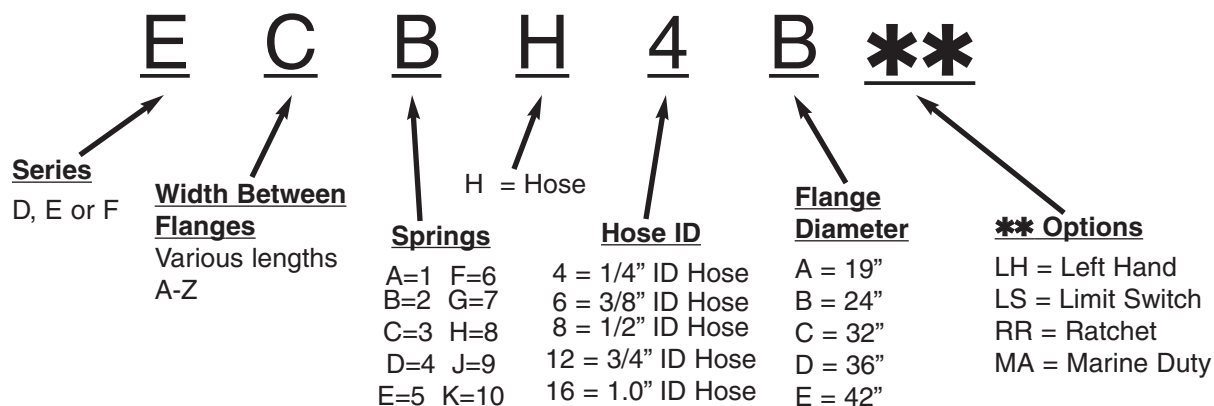
Page 10

Part Number Decoders

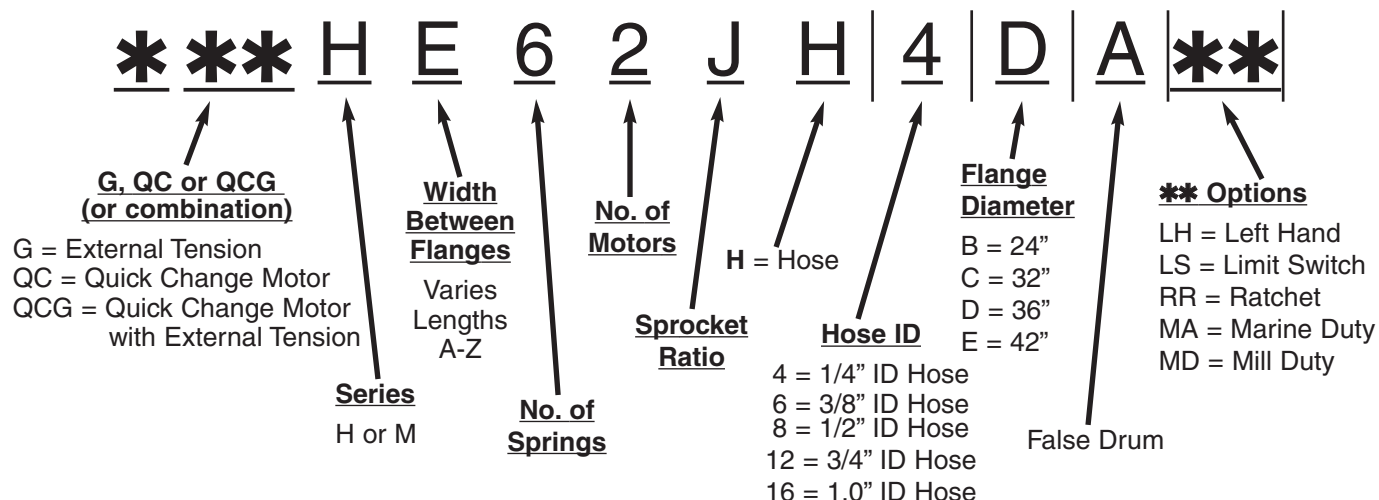
1400 thru 4200 Series PowerReel



D, E, & F Series

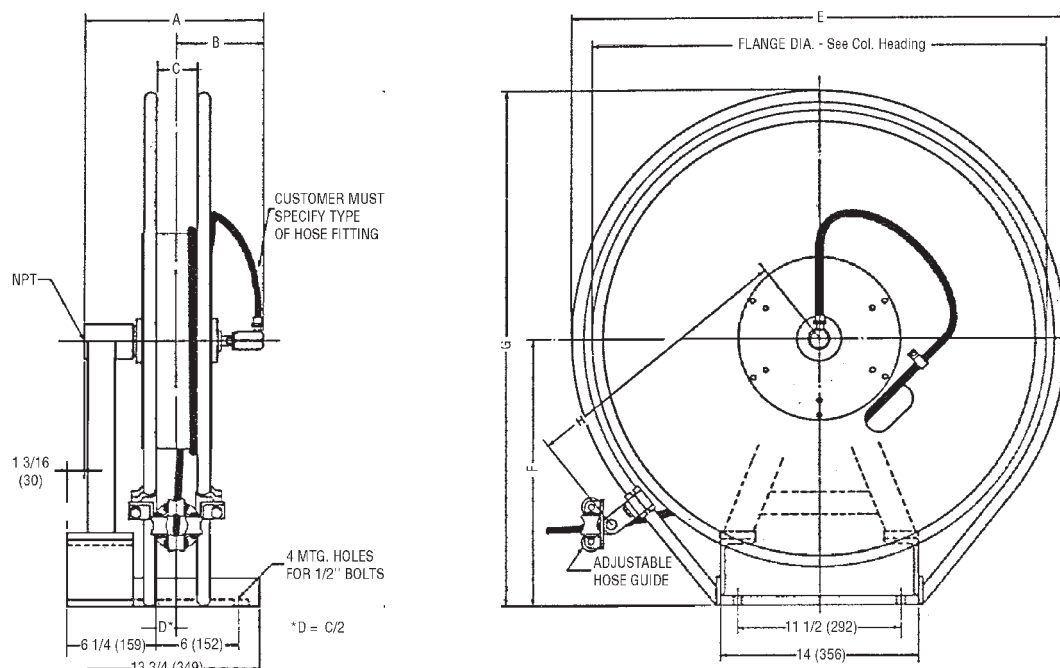


H & M Series



Hose Reel Dimensions

Series D, E, F Flanges - 24" & 32"



24" Flange									
Catalog No.	Dimensions Inches (mm)								Weight lbs. (kg.)
	NPT	A	B	C	E	F	G	H	
D8DH4B	1/4	12 ¹ / ₂ (318)	6 ³ / ₈ (162)	2 (51)	26 ³ / ₄ (680)	14 ⁵ / ₈ (372)	28 (712)	16 (407)	111 (51)
DQDH4B			6 ¹ / ₈ (156)	2 ¹ / ₂ (64)					
EBDH4B		15 ¹ / ₂ (394)	9 ³ / ₈ (239)	2 (51)					140 (64)
ECDH6B	3/8		8 ⁷ / ₈ (226)	3 (76)					
EDCH12B	3/4	14 ⁵ / ₈ (397)	7 ¹ / ₂ (191)	4 (102)					126 (58)
EQDH6B	3/8	15 ¹ / ₂ (394)	9 ¹ / ₈ (232)	2 ¹ / ₂ (64)					140 (64)
ERCH8B	1/2	14 ³ / ₈ (366)	7 ¹ / ₂ (191)	3 ¹ / ₂ (89)					125 (57)
ERDH6B	3/8	15 ¹ / ₂ (394)	8 ¹¹ / ₁₆ (221)						140 (64)
ESDH6B	3/8	16 ¹ / ₈ (410)	8 ³ / ₄ (223)	4 ¹ / ₂ (115)					
ESDH8B	1/2	16 ¹ / ₈ (410)	8 ³ / ₄ (223)	8 ³ / ₄ (223)					180 (82)
FCDH6B	3/8	19 ¹ / ₂ (496)	12 ⁷ / ₈ (327)	3 (76)					
FEBH12B	3/4	14 ³ / ₄ (375)	7 ¹ / ₈ (181)	5 (127)					130 (59)
FRCH6B	1/2	17 ³ / ₈ (442)	10 ¹ / ₂ (267)	3 ¹ / ₂ (89)					155 (71)
FRDH6B	3/8	19 ³ / ₄ (502)	12 ¹¹ / ₁₆ (323)						180 (82)
FSDH8B	1/2	20 ¹ / ₈ (511)	12 ³ / ₄ (324)	4 ¹ / ₂ (115)					
FUCH12B	3/4	17 ⁵ / ₈ (448)	9 ¹ / ₄ (235)	6 ¹ / ₂ (165)					156 (71)
32" Flange									
EBBH16CA	1	13 ³ / ₈ (340)	7 ¹ / ₄ (185)	2 (51)	34 ³ / ₄ (883)	18 ⁵ / ₈ (474)	36 (915)	20 (508)	141 (64)
FBBH16CA		15 ³ / ₈ (391)	8 ¹ / ₄ (210)						161 (73)
FECH12C	3/4	17 ⁵ / ₈ (448)	10 (254)	5 (127)					185 (84)
FSBH16CA	1	15 ³ / ₈ (391)	8 (203)	4 ¹ / ₂ (115)					161 (73)

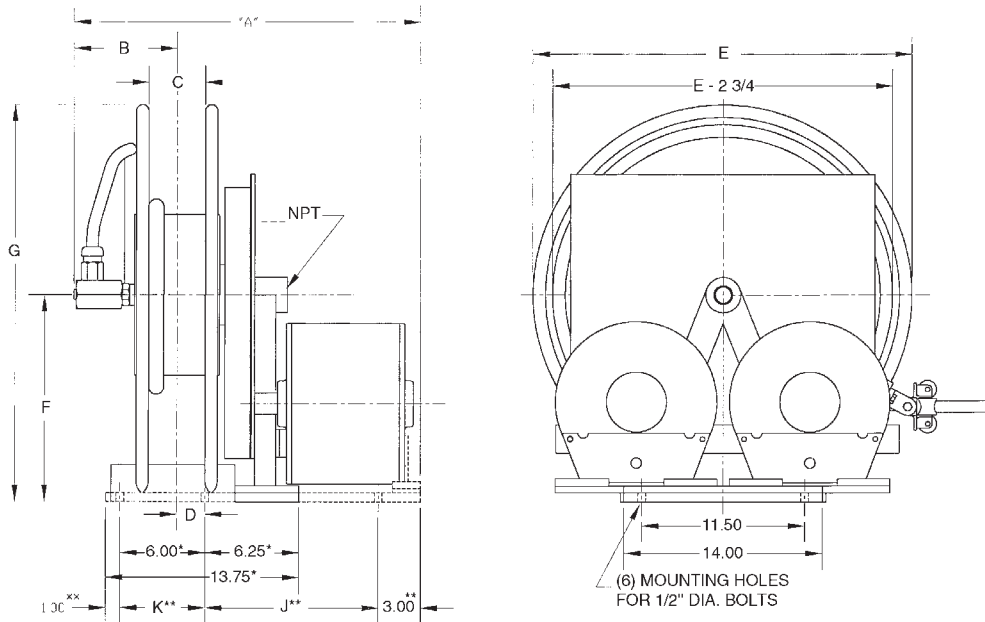
Hose Reel Dimensions

Cont. Series H - One Motor

Continued from Page 13

36" Flange												
Catalog No.	Dimensions Inches (mm)										Weight lbs. (kg.)	
	NPT	A	B	C	E	F	G	H	J	K		
HF41CH16DA	1	30 (762)	8 ⁵ / ₈ (219)	6 (153)	38 ³ / ₄ (985)	20 ⁵ / ₈ (524)	40 (1016)	22 (559)	16 ¹ / ₈ (410)	6 (153)	323 (147)	
HF51DH16DA		32 ⁷ / ₈ (835)							19 (483)		349 (159)	
HT51FH16DA		32 ³ / ₈ (823)	8 ³ / ₈ (213)	5 ¹ / ₂ (140)							21 ⁷ / ₈ (556)	350 (159)
HT61GH16DA		35 ¹ / ₄ (896)										378 (172)
HT61HH16DA		34 ³ / ₈ (874)	9 ³ / ₈ (239)	7 ¹ / ₂ (191)					19 (483)	24 ⁵ / ₈ (616)	8 ¹ / ₈ (204)	380 (173)
HV51EH16DA		40 (1016)										355 (161)
HV71FH16DA		42 ⁷ / ₈ (1089)							27 ¹ / ₂ (699)			411 (187)
HV81JH16DA												

Series H - Two Motor



* APPLIES TO UNITS WITH 3 SPRINGS OR LESS
 ** APPLIES TO UNITS WITH MORE THAN 3 SPRINGS

36" Flange											
Catalog No.	Dimensions Inches (mm)										Weight lbs. (kg.)
	NPT	A	B	C	E	F	G	H	J	K	
HT42DH16DA	1	29 ¹ / ₂ (750)	8 ³ / ₈ (213)	5 ¹ / ₄ (140)	38 ³ / ₄ (985)	20 ⁵ / ₈ (524)	40 (1016)	22 (559)	16 ¹ / ₈ (140)	6 (153)	460 (209)
HT52EH16DA		32 ³ / ₈ (823)							19 (483)		514 (233)
HV42CH16DA		31 ¹ / ₂ (801)	9 ³ / ₈ (239)	7 ¹ / ₂ (191)					16 ¹ / ₈ (410)		469 (214)
HV52DH16DA		34 ³ / ₈ (874)							19 (483)		521 (237)
HV62FH16DA		37 ¹ / ₄ (947)							217 ₈ (556)		575 (261)
HV72GH16DA		40 (1016)							24 ⁵ / ₈ (626)		629 (286)

Don't see what you need? Call us!

Page 14

Hose Reel Options

Quick Reference Chart

Options are detailed on pages **17 to 25** in alphabetical order. Use the chart below to find the entire range of options available for each type of reel in the Insul-8 Hose Reel Family. On certain series of reels, we already include some traditional “add-on” options as standard features of the base reel. For your convenience, the chart lists each series of reel, the option, the status (**S = Standard**, **A = Add-On**, “*” = on selected models only) and page number detailing each option. Options for any Specialty Reels (**pages 17 to 25**) not already listed below are the same as the reel from which it is modified. Please call if you need additional help.

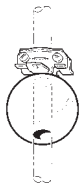
Option	Swivel Base 360° Pg: 24	Spool Lock	Roller Guide Pg: 21-23	Reel Safe Pg: 20	Ratchet Pg: 20	Quick Change Motor Pg: 19	Pivot Base Pg: 18	Mill Duty Pg: 17	Marine Duty Pg: 17	Limit Switch Pg: 17	Hose Grip Pg: 16	Guide Rails	Ball Stop Pg: 16
1400 Series	A		S	A	S		A				A		A
1900 - 2400 Series	A	A	S	A	A		A			A	A	A	A
3200 - 3600 Series		A	S	A	A	S	A			A	A	S	A
D, E, F Series	A	A	S	A	A		A		A	A	A	S	A
H Series		A	S	A	A*	A	A	A	A	A	A	S	A
Hand Rewind		A							A				

Hose Reel Options

Ball Stops

Ball Stops are also commonly referred to as “cable stops,” “bumper stops” or even “hose stops.”

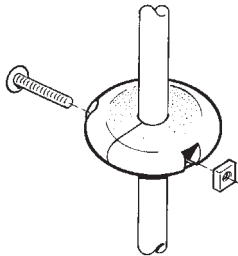
- **Generally used for** manually operated lift and drag applications to govern retraction length. Stops are required when accessories such as air guns and drills are installed on hose reels.
- **Suitable for** all Insul-8 Hose Reels. (Less hand wound and dual hose.)
- **To order, use the following catalog numbers:**



ROUND BALL STOP (Traditional) (Use with 1400 Series Only)

Cat. #34885 For hose O.D. ranging from 0.188" to .438"
(with Shock Absorbing Spring Bumper)

Cat. #40006 For hose O.D. ranging from 0.188" to .438"
(Without Shock Absorbing Spring Bumper)



FLAT DESIGN (Split Doughnut) (Suitable for 1400, D, E, F & H Series)

Cat. #34474 For hose O.D. ranges 0.438" to .624"

Cat. #34475 For hose O.D. ranges 0.625" to .749"

Cat. #34476 For hose O.D. ranges 0.750" to 1.05"

Cat. #34477 For hose O.D. ranges 1.06" to 1.38"

Cat. #34490 For hose O.D. ranges 1.39" to 1.55"

Hose & Cable Grips

Hose & Cable Grips, also known as “strain reliefs,” are designed to relieve the concentrated strain on hose & cable terminations.

- ◆ **Generally used for** reels in stretch applications
- ◆ **Suitable for** all Insul-8 Hose Reels
- ◆ **To order, use following catalog numbers:**

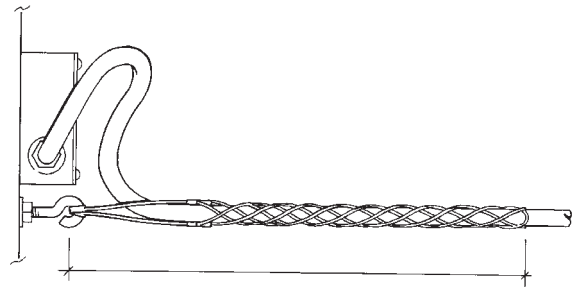
Cat. #03622 For hose O.D. ranges 0.430" to 0.610"

Cat. #03623 For hose O.D. ranges 0.611" to 0.740"

Cat. #03624 For hose O.D. ranges 0.741" to 0.990"

Cat. #03625 For hose O.D. ranges 0.991" to 1.24"

Cat. #03626 For hose O.D. ranges 1.25" to 1.49"



Inlet Hose Assemblies

Inlet hose assemblies include male NPT fittings.

#100448A 1/4" ID x 2' – 300 PSI

For ease of installation, use a flexible hose connection with swivel between the hose reel inlet and the source of supply to prevent possible misalignment and binding.



Don't see what you need? Call us!

Hose Reel Options

Limit Switches

Limit switches are used when an electrical interlock between hose payout length and other equipment is required. Rotary cam type limit switches are provided which are adjustable for accurate location of the tripping mechanism. A variety of internal gear ratios are available so that the selection of the proper ratio will give maximum rotation of the actuator. The standard limit switch consists of a 2-element switch to provide 2 NO (normally open) and 2 NC (normally closed) sets of contacts in a NEMA 4 enclosure.

- **Ideal for** overrun control on overhead cranes and pendant reels.
- **Suitable for** D, E, F & H Series Reels.
- **To order, simply add “LS” at the end of the cable reel part number.**
(Part Number Example: Standard 'FECH12B' with Option 'FECH12BLS')

Marine Duty Option

Marine Duty option is available for reels used in applications around bodies of water and other moist environments as defined by marine specifications IEEE-45, US Coast Guard, ABS.

- **Ideal for** shipping ports, water treatment plants and other extremely moist areas.
- **Suitable for** D, E, F & H Series Reels.
- **To order, simply add “MA” at the end of the cable reel part number.**
(Part Number Example: Standard 'FECH12B' with Option 'FECH12BMA')

Mill Duty Option

Mill Duty option consists of heavy gauge steel, cast steel end-bells, external spring tension adjusters with Quick Change Motor option, reinforced guide rails with supports and lifting eyes.

- **Ideal for** reels used in mills and refineries operating in severe environments and demanding applications.
- **Suitable for** H Series Reels
- **To order, specify “MD” at the end of the cable reel part number.**
(Part Number Example: Standard 'FECH12B' with Option 'FECH12BMD')

Hose Reel Options

Pivot Bases

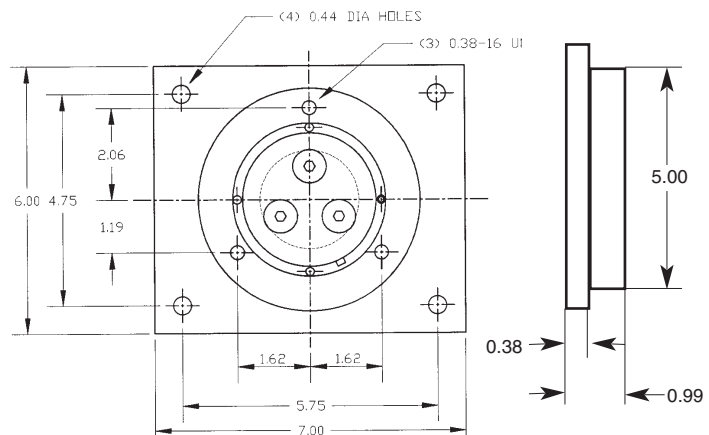
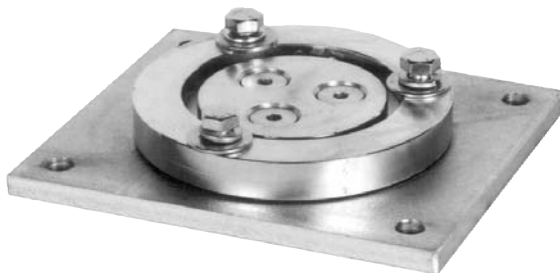
Pivot Bases allow the cable reel to pivot back and forth ($< 360^\circ$), for alternate directions of cable payout.

Where cable payout exceeds 15° away from parallel to the spool, a pivot base should be used.

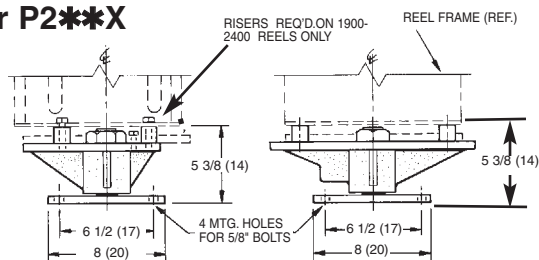
(Note that "Swivel Bases" are available for applications that require a full 360° pivot - see page 38). Pivot Bases are ordered based on the specific style of reel used:

Reel Type	Max. Rotation	Weight	Catalog No.
1400 Series	345°	7.5 lbs.	PVB
1400 Series Torque Reel	360°	7.5 lbs.	TRPVB
1500 Series	345°	20 lbs.	XPVB
1900 / 2400 Series (E, G, H, J spools, E or L springs)	330°	43.0 lbs.	40274A
1900 / 2400 Series (E, G, H, J spools, F springs)	330°	43.0 lbs.	40274B
1900 / 2400 Series (F, K, L, M spools E, L or F springs)	330°	43.0 lbs.	40274C
D - E - F Series For **, use the alpha characters designating the flange diameter and the width between flanges - see part number decoder on page 19. Example: Reel ECB34B uses a P2BC pivot base. For Hazardous Duty add "x" to the end of the Part No. Ex: (P2BCX)	330°	44.0 lbs.	P2**
H Series For Hazardous Duty add "x" to the end of the Part No. Ex: (P3-H*X)	330°	103.0 lbs.	P3-H*
For *, use the alpha characters designating the width between flanges - see catalog page 23. Example: HC31A34B			

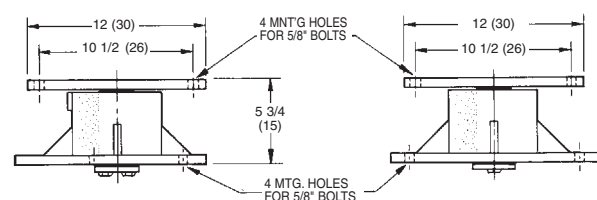
PVB or TRPVB



P2**, 40274* or P2**X



P3 - H* and P3-H*X



Don't see what you need? Call us!

Hose Reel Options

Quick Change Motor & External Tension Adjustment

Quick Change Motor consists of a simplified change out procedure with unique slip joint shaft coupling. External Tension Adjustment allows you to adjust tension after hose has already been installed on reel.

- **Ideal** for applications where servicing and downtime will cause critical delays.
- **Suitable** for Series H Series Reels.
- **To order, add the following letters to the beginning of the hose reel part number.**
(Part Number Example: Standard HV41CH12B-4 with Option 'QCG-HV41CH12B-4')

For Quick Change Motor: Add "QC" at the beginning of the hose reel part number .

For External Tension Adjustment: Add "G" at the beginning of the hose reel part number.

For Both: Add "QCG" at the beginning of the hose reel part number.



Standard Series H reels are furnished with outboard spring motors that are connected directly to the reel spool with roller chain and sprocket drive. The optional quick change spring motor can be supplied affording the user fast removal of the spring motor without disassembling the sprocket and chain circuit. Standard outboard spring motors can be furnished with or without the tension adjustment feature. The tension adjustment feature requires additional clearance behind the spring motor. Add 4 1/4" to "A" dimension for reel with tension adjustment. The removal of 4 bolts on the front end of the canister (spring motor and 2 bolts on the back end via the mounting bolts), allows the spring motor to slide off the base frame of the reel and slide a new spring on in minutes.



Spring tension can be achieved by using a crescent wrench, open ended wrench or socket. With wrench in hand, simply turn clockwise or counter clockwise to set tension (remember that there is one canister to adjust). Standard outboard spring motors can be furnished with or without the tension adjustment feature. The tension adjustment feature requires additional clearance behind the spring motor; add 4 3/4" to dimension "A". It includes a counter to indicate preset tension on the cable.



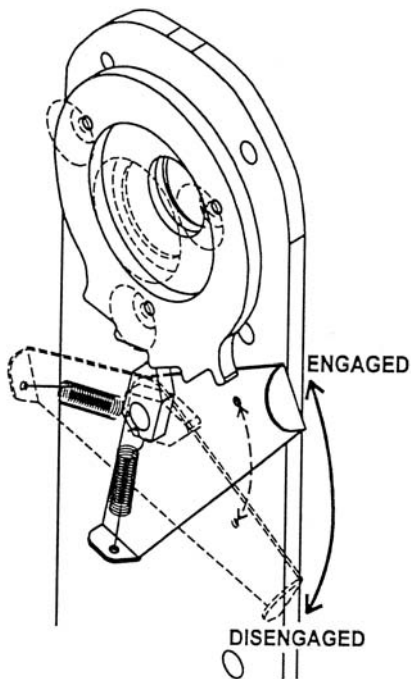
Don't waste time ripping down your outboard spring motor or throwing away your old spring canister. Let Insul-8 change it for you. Simply return the item back to the factory and Insul-8 will take care of the rest. **You can also order spare outboard motors so you always have a quick fix when your operation can't afford to be shut down.**

Hose Reel Options

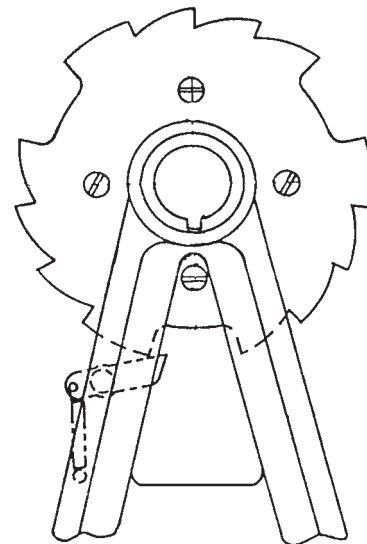
Ratchets

Ratchets are spring activated mechanisms which hold the hose reel spool in place at certain points of payout.

- **Required** for manually operated lift and drag applications and when accessories such as air ratchets and drills are installed.
- **Suitable for** all 1200 & 1400 Series POWEREELS, and D, E, and F Series. Also suitable for some H Series reels. *(Ratchets are included on all 1200 & 1400 Series POWEREELS with a lockout option for constant tension operations.)*



1200 & 1400 Series



D, E, F Series Standard Ratchet

- To order, specify the following:

For 1200 & 1400 Series:

Standard

For D, E & F Series hose reels:

Simply add "RR" to end of the hose reel part number.

For H Series:

Contact Insul-8 for availability.

ReelSafe



Available for 1400 through 4200, D, E, F, H, & M Series Reels.

The Patented REELSAFE brake is a device designed to limit the retraction speed of a spring-powered reel to a speed that will not injure personnel or damage property should an accidental uncontrolled retraction occur. The REELSAFE is a fully adjustable device. It is preset at the factory to a safe speed but can be adjusted to the user's preference after reel installation. Some variation in retraction rate will be noticeable during large temperature variations such as seasonal temperature change, and minor adjustments may be necessary.

#42900*

Don't see what you need? Call us!

Hose Reel Options

Roller Guides (Hose Guides)

Roller Guides are also commonly referred to as “hose guides.” Insul-8 includes a 4-roller guide as a standard item on each spring driven hose reel. For special hose payout applications, we recommend our Type C (see p. 22) Roller Guides which come in several customized designs. Please also see page 23 for instructions on how to select and install the proper roller guide

IMPORTANT NOTE: Do not use the standard rigid mount roller guide supplied with reel in two-way payout applications.

Type “A” Roller Guide

- **Type A Roller Guides** are ideal for applications where hose is pulled in a direction tangent to the drum of the reel not exceeding 15°. These are most commonly used in lift applications and single-direction stretch applications. Their main purpose is to center hose onto the spool. Guides also act as a positive seat to ball stops.

- Suitable for D, E, F, and H Series hose reels.

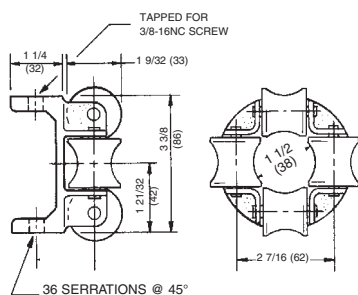
- To order, use the following catalog numbers:

Cat. #A2: 4-Roller Guide for hose with maximum O.D. of 1.25" (Standard on D, E, F & H Series Reels. Also available for remote mounting.) *Please see dimensions below.*

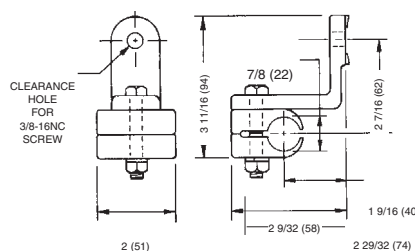
Cat. #A3A: 4-Roller Guide for hose with maximum O.D. of 2" (Standard on D, E, F & H Series Reels. Also available for remote mounting.) *Please see dimensions below.*

Cat. #AA: Guide Mount Set for remote mounting of A2 and A3A Roller Guides. May be required for replacement of existing guide on D, E, F & H Series Reels.

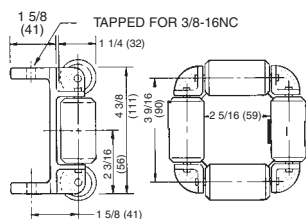
Cat. #FGK: Flop-Over Guide Kit for modifying the standard stationary guide on 1400 Series POWEREELS to allow free movement to any point around the outer flange. Ideal for two way payout applications. (Not pictured below.)



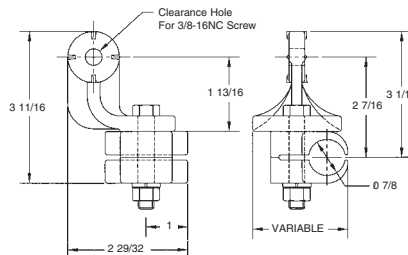
Type A2 Four Roller Guide



Type AA Guide Mount Set (Used on 3" or greater drum widths).



Type A3A Four Roller Guide



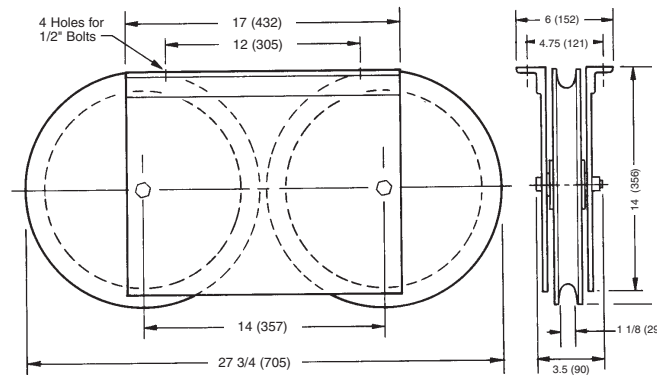
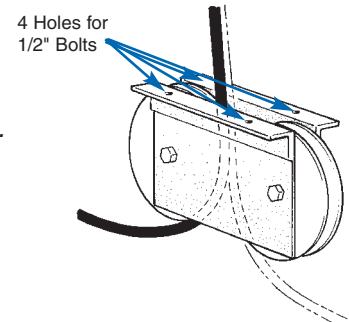
Cable Guide Support (Used on 2 1/2" or less Drum Widths).

Hose Reel Options

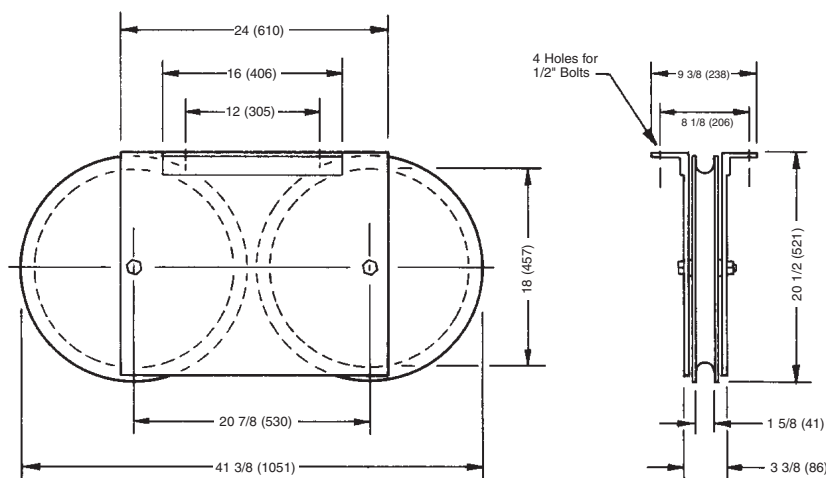
Type "C" Roller Guide

- **Type C Roller Guides are ideal for** applications where hose is payed-out in two directions with the free end of the hose terminated at the center of total travel. The Type C Guide is used when structural members or other obstructions would interfere with the normal windup and payout attitudes of the hose if the reel was used without cable guides. All Type C guides require separate mounting from the reel and are furnished with sealed ball bearings.
- **Suitable for** all Insul-8 reels.
- **To order:** Please contact Insul-8 for assistance in choosing the proper reel/guide combination.
- **Type C Roller Guide Descriptions:**

- Cat. #C12S:** 12" Two-Roller Guide for use in applications where hose (up to 1" O.D.) is payed out in two directions.
- Cat. #C18S:** 18" Two-Roller Guide for use in applications where hose (up to 1.5" O.D.) is payed out in two directions.
- Cat. #CA11397** Single 12' Roller Guide for hose up to (1" O.D.) *not shown*.



C12S Roller Guide



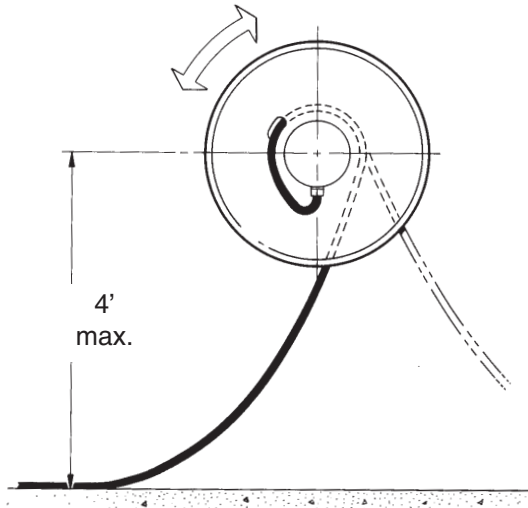
C18S Roller Guide

Don't see what you need? Call us!

Hose Reel Options

Roller Guide Selection / Specification Instructions

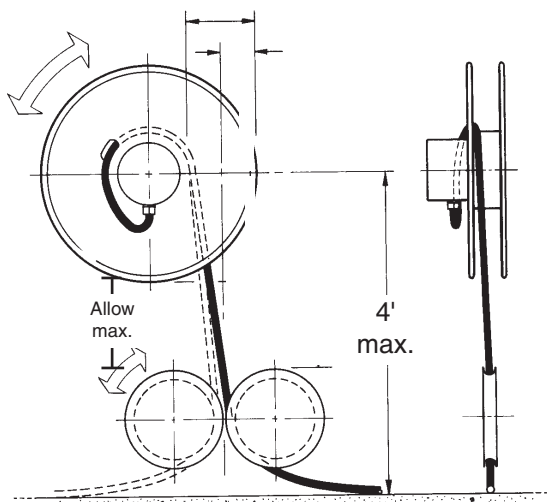
Application I



Application I Description:

Low lift height to ϕ of reel without obstructions to nominal catenary of hose.

Application II



Application II Description:

Lift height center line of reel with obstructions to normal catenary of hose and adequate space between reel flange and hose lay for two sheave roller guide.

Cat. #: C12S, C18S or C24S

How To Select The Proper Roller Guide

- 1) Determine hose bend diameter required.
(*RULE: hose bend diameter is 12 times the hose diameter.*)
- 2) Select roller guide with required bend diameter and lay out hose reel and roller guide to assure that there is no interference. (If in doubt which application illustrated here applies, layout the Application II configuration first.)
- 3) Roller Guide catalog numbers indicate bend radius;
(*ex.: #C12S Roller Guide has a 12" bend diameter and #C18S Roller Guide has an 18" bend diameter.*)
- 4) When ordering, specify catalog number of Roller Guide and state **"for separate mounting with hose reel part number..."** If the hose reel is not on the same order, specify the hose for which the Roller Guide has been selected or make reference to the hose reel order.

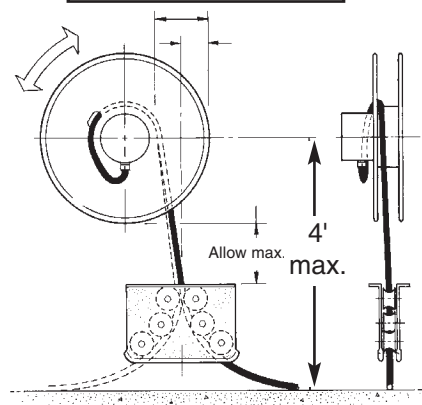
How To Mount A Roller Guide

Front View: Locate center line of the Roller Guide on the mean center line of the spool flange to obtain a vertical line payout of hose from the spool to the Roller Guide when the spool is one half full.

Side View: Locate Roller Guide center line in line with spool center line.

NOTE: Allow maximum distance between spool and guide with a maximum of 4' from spool centerline to the surface supporting the hose.

Application III



Application III Description:

Lift height center line of reel with obstructions to normal catenary of hose and adequate space between spool flanges and hose lay for two sheave hose guide. Multiple roller guides provide lower profile necessary for mounting clearance.

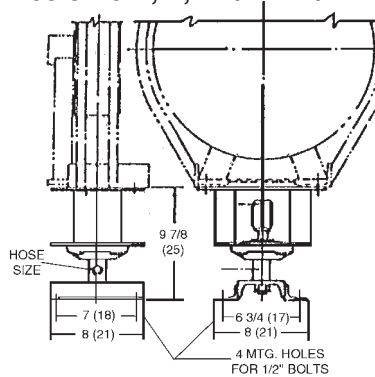
Cat. #: C18M6 & C28M6

Hose Reel Options

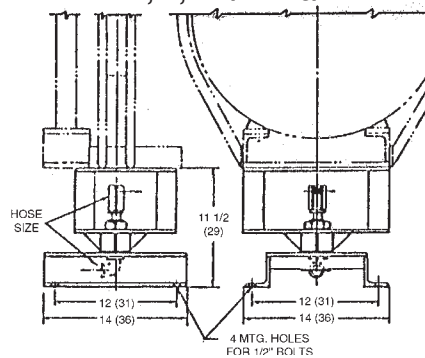
Swivel Base, Pivot Base

HMS Swivel Bases are designed to allow continuous 360° rotation of the reel. These units are fabricated from welded steel and include heavy duty, ball bearings and precision made ball bearing swivel joints. Bases are furnished complete with fittings and length of hose for attachment to reel.

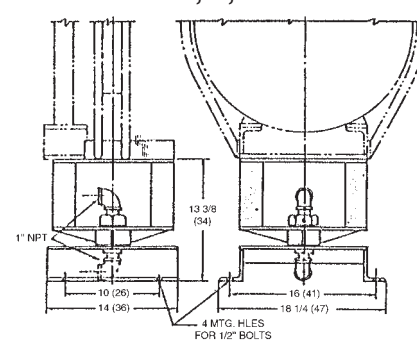
1400 & 19 D, E, F 1/4" – 1/2" = ID



24" D, E, F 1/4" – 3/4" = ID



24" D, E, F 1" = ID



When Ordering State:

- (1) Catalog Number of Reel to be used with Swivel Base
- (2) Catalog Number of Swivel Base *and*
- (3) I.D. of Hose and Swivel.

1400 Series		19" DEF		24" DEF	
Part #	Description	Part #	Description	Part #	Description
HMS4-14	1/4" Hose	HMS4-A**	1/4" Hose	HMS4-B**	1/4" Hose
HMS6-14	3/8" Hose	HMS6-A**	3/8" Hose	HMS6-B**	3/8" Hose
HMS8-14	1/2" Hose	HMS8-A**	1/2" Hose	HMS8-B**	1/2" Hose
N/A		N/A		HMS12-B**	3/4" Hose
N/A		N/A		HMS16-B**	1.0" Hose

(*) Digit will be assigned by factory based on reel HMS is intended for.

Don't see what you need? Call us!

Hand Wound Reels

Series 20, 30 & 40 Selections



Series 20
24³/₄" H 19" W 31⁷/₈" D
(54 lbs.)

Series 20 Hose Reel (Portable)	
Hose	Catalog No.
1/4" ID x .500 OD	20-H-4
3/8" ID x .656 OD	20-H-6
1/2" ID x .812 OD	20-H-8
3/4" ID x 1.125 OD	20-H-12

SERIES 20— Portable reel has a welded steel tube construction to provide maximum strength and minimum weight.

Dimensions: 24³/₄ H x 19W x 31⁷/₈D. Wt.: 54 lbs.

Series 30 Hose Reel (Portable)	
Hose	Catalog No.
1/4" ID x .500 OD	30-H-4-1
3/8" ID x .656 OD	30-H-6-1
1/2" ID x .812 OD	30-H-8-1
3/4" ID x 1.125 OD	30-H-12-1

SERIES 30 — Same general construction as Series 20 except it is provided with wheels and a handle to provide portability with minimum effort.

Dimensions: 36¹/₄ H x 23³/₄W x 33¹/₂D. Wt.: 61 lbs.



Series 30
36¹/₄" H 23³/₄" W 33¹/₂" D
(61 lbs.)



Series 40
24" H 24" W 18⁵/₁₆" D
(53 lbs.)

Series 40 Hose Reel (Portable)	
Hose	Catalog No.
1/4" ID x .500 OD	40-H-4
3/8" ID x .656 OD	40-H-6
1/2" ID x .812 OD	40-H-8
3/4" ID x 1.125 OD	40-H-12

SERIES 40 - Ideal for stationary applications — truck compartments, airplane hangars or factories. Winding handle is opposite mounting plate.

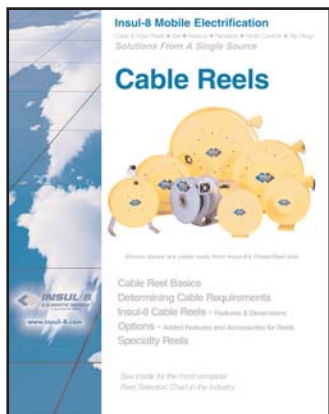
Dimensions: 24 H x 24 W x 18⁵/₁₆D. Wt.: 53 lbs.

Series 20, 30 & 40 Capacities

Hose Reels		
Hose	Hose Capacity (ft')	
	Series 20 & 30	Series 40
1/4" ID x .500 OD	700'	350'
3/8" ID x .656 OD	380'	160'
1/2" ID x .812 OD	250'	100'
3/4" ID x 1.125 OD	100'	45'

Notes

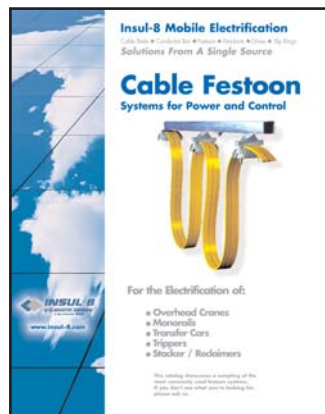
This image shows a full page of white paper with horizontal blue or grey ruling lines. The lines are evenly spaced and run across the width of the page, typical of notebook paper. There are no margins, text, or other markings on the page.



SPRING DRIVEN
REELS



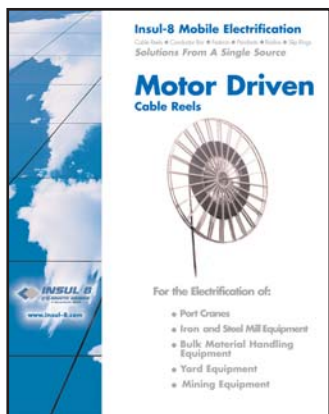
CONDUCTOR BAR



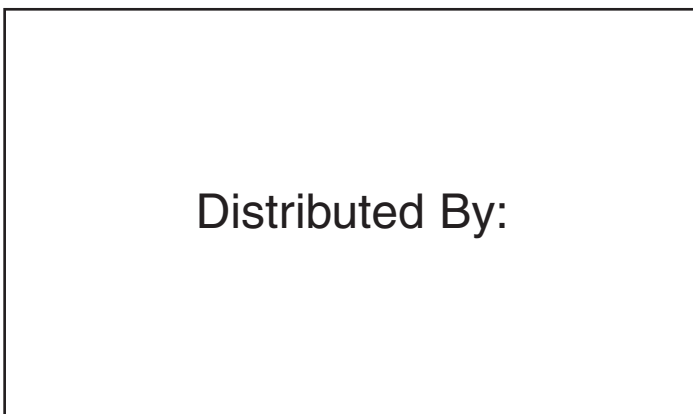
FESTOON



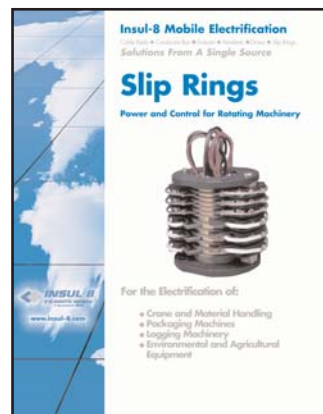
CONDUCTOR BAR



MOTOR DRIVEN
REELS



Please visit our website at:
www.insul-8.com



SLIP RINGS

USA

10102 F Street Omaha, NE 68127
Phone: (402) 339-9300 Toll Free: (800) 521-4888
Fax: (402) 339-9627 Toll Free: (800) 780-8329
e-mail: i8-info@insul-8.com

CANADA

175 Boulevard J.F. Kennedy
St. Jerome, Quebec J7Y 4B5

Phone: (514) 565-9900
Toll Free: (800) 667-2487
Fax: (514) 432-6985
e-mail: contact@insul-8.com

MEXICO

Puerto La Paz #123 Col. La FE,
San Nicolas de los Garza,
N.L. C.P. 66477

Phone: (81) 1090-9013
Fax: (81) 1090-9014
e-mail:

AUSTRALIA:

14 England Street
Dandenong, Victoria 3175
Phone: (3) 9706 88 44
Fax: (3) 794 92 98
e-mail: info@insul-8.com.au