

Emmo S6

Owner's Manual



EMMO

GREEN YOUR LIFE

V 1.0, J. Lu, M. Wu

Table of Contents

E-bike MTO Label.....3

Specifications.....4

Charging Your E-bike.....5-6

Brakes.....7

Kickstand.....8

Pedals.....9

Greasing Bike Chain and Rear Drum Brakes.....10

Front Drum Brakes and Tubeless Tires.....11

Circuit Breaker.....12

Ignition and Seat Lock.....13

Remote Controller.....14

Right and Left Side of the Handlebar and Throttle.....15

Dashboard.....16

E-bike Registration.....17

Contact Information.....18

E-bike MTO Label

**THIS VEHICLE IS A POWER
ASSISTED BICYCLE AND
MEETS ALL THE
REQUIREMENTS UNDER
SECTION 2(1) OF THE
CANADA MOTOR VEHICLE
SAFETY REGULATIONS.**

**CE VÉHICULE EST UNE BICYCLETTE
ASSISTÉE ET RECONTRE LA NORME 2(1)
DU RÈGLEMENT SUR LA SÉCURITÉ
DES VÉHICULES AUTOMOBILES DU CANADA.**

WARNING!

Please make sure this MTO label is on your e-bike. If this label is not present, please ask your dealer to put one on. All electric bicycles are required to have this sticker on the bike for it to be a legal vehicle.

Specifications

Color:	Black; Dark Red/Black; Dark Blue/Black; Yellow/Black
Dimension (LxWxH):	1780 x 660 x 1245
Wheel Size:	10"/3.0"
Net Weight:	85 kg
Maximum Speed:	32 km/h
Travel Range:	60-70km
Charging Time:	3 – 8 Hours
Climbing Angle:	25 Degrees
Load Capacity:	220kg
Motor:	Continuous 500W (Super Torque Motor)
Battery:	60V/20Ah
Charger:	AC100-120V, Smart Charger (Battery maintained while charging)
Front Brake:	Disc Brake
Rear Brake:	Drum Brake
Lock System:	Remote Alarm / Remote Starter / Key Ignition Lock / Steer Lock / Motor Lock
Meter & Indicator:	Speedometer, Battery Strength Indicator, Light Indicator
Lighting System:	Headlight w/High Beam, Turning Signals, Brake Light, Tail Light, Indicator Light
Storage:	Lockable Under-Seat Storage, Lockable Rear Box (optional), Lockable Glove Box

SPECIAL FEATURES: Super Torque Motor; Tubeless Tire; Front Disc Brake; 60V Gel Battery

* Travel range is based on riding on level ground, no stops, no winds, warm temperatures for a 175lb rider with no extra cargo.

Charging the Bike (Lead Acid Battery)

There are two different plugs on your charger: one end that goes into an 110V power outlet, and the other into the charger port.

1. Take one end of the charger and plug it into the charger port located on the bike (Please make sure that it is fully plugged in)
2. Plug the other end of the charger into the power outlet.
3. Confirm that the charging indicator turns red.

Note: When the battery is fully charged, the charging indicator will turn green.

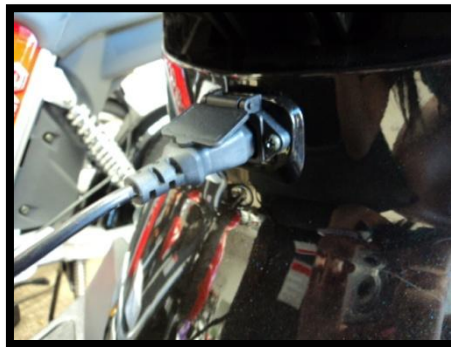
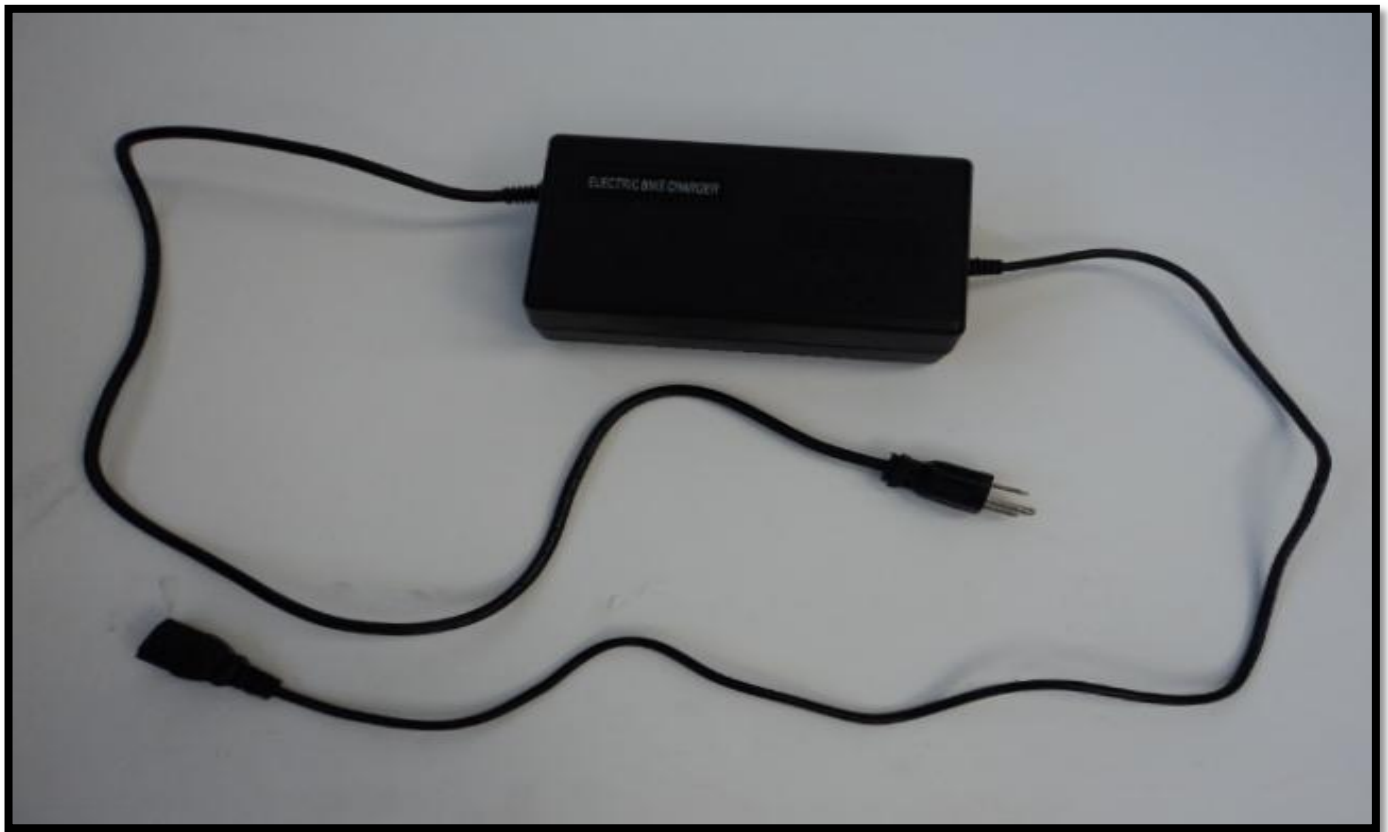
4. Unplug the charger from the power outlet.
5. Unplug the charger from the battery/bike.

Note: The charger light must be red when both plugs are plugged in. It will always turn red first if the bike has been used. It will turn green after it is fully charged.

WARNING!

Charge the bike for no more than 8 hours.

Fully charge the bike once a month during long periods of inactivity. (i.e. during the wintertime)



WARNING!

***CHARGING THE E-BIKE SHOULD TAKE A MAXIMUM OF 8 HOURS.**

***DO NOT CHARGE THE E-BIKE FOR MORE THAN 12 HOURS. OVERCHARGING WILL OVERHEAT THE BATTERY, CAUSING DAMAGE TO THE BATTERY.**

***MAKE SURE TO FULLY CHARGE THE E-BIKE ONCE A MONTH DURING LONG PERIODS OF INACTIVITY (i.e. WINTERTIME).**

Front Brake

When this lever is pulled towards the rider, the front brake activates.



Back Brake

When this lever is pulled towards the rider, the back brake activates.

Note: When either brake is activated, all power to the motor will be disconnected. Always use the back brake first, then the front brakes.



Side Stand

The side stand is similar to other bicycles – flick it downwards such that it sticks out, as shown in the picture, then lean it to the left.

Centre Stand

The centre kick stand is better used for all situations. In order to engage the kickstand, apply pressure with your foot downwards and gently lift the bike upwards, NOT BACKWARDS.

WARNING!

Please do not engage the side stand when the bike is left unattended. The bike is not completely stabilized with this kickstand.

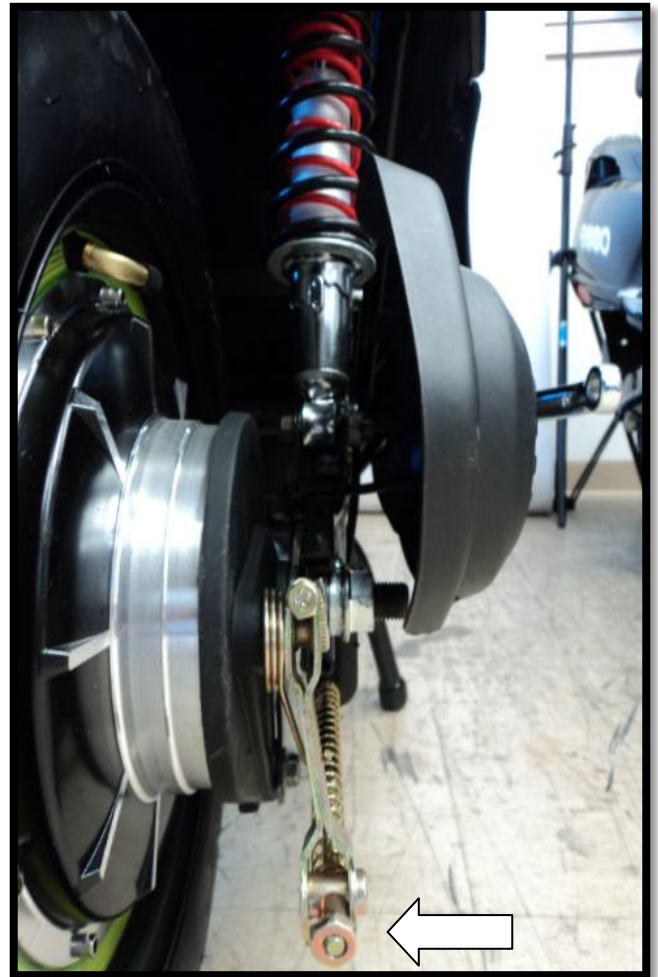
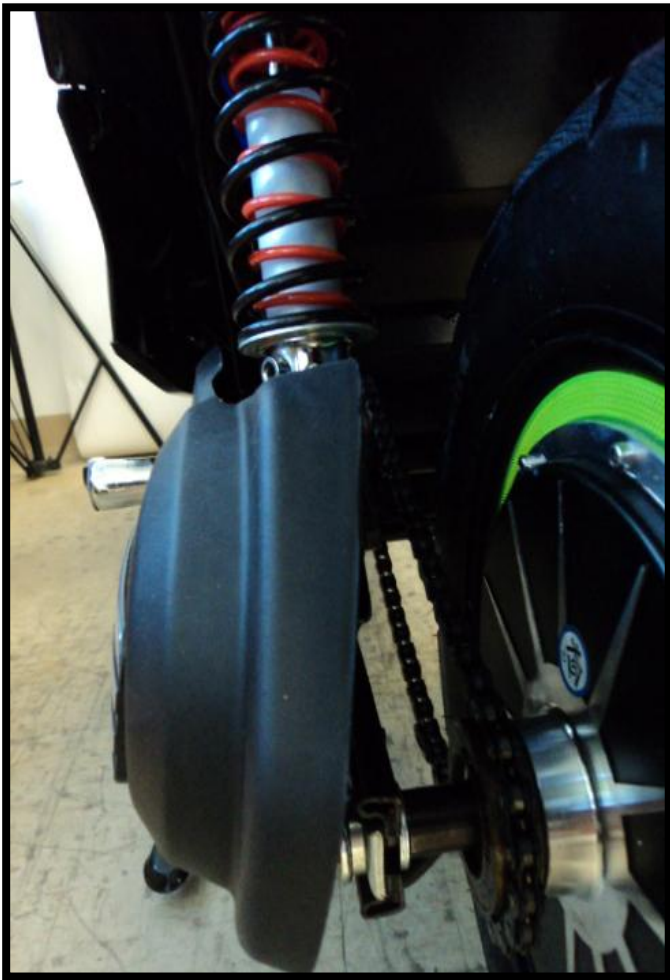


Foldable Bike Pedals

To fold the bike pedals, push the pedal inwards and lift up.

WARNING!

The law requires all e-bikes to have pedals installed. If the pedals are off, these vehicles will be considered a motorcycle which does not follow the same regulations as e-bikes.



Note: Remember to grease the chains once a month.

Please also make sure that the back wheel is not over tighten after adjustment.

Drum Brakes (Rear)

Turning this nut tightens or loosens the brake.
Clockwise tightens the brakes while counter
clockwise loosens the brakes.

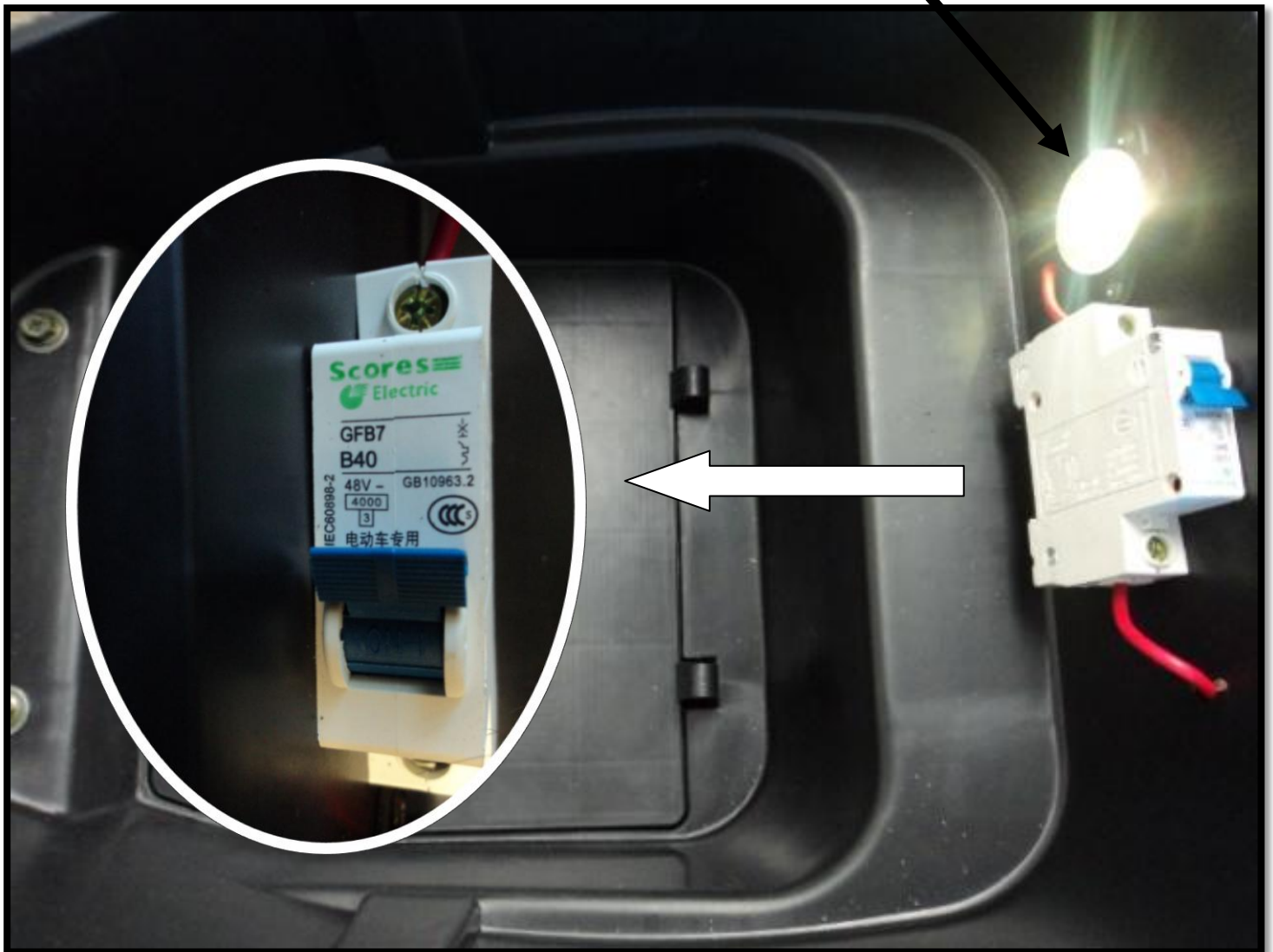


Disc Brakes (front) and Tubeless Tires

The Emmo S6 is assembled with front disc brakes, as opposed to drum brakes, and tubeless tires. These brakes are virtually maintenance free; the only maintenance required is the replacement of the fluid every 10,000km. They are also stronger, more resistant to wear and tear, and last longer than the opposing drum brakes. The tubeless tires are extremely difficult to puncture, so that chance of getting a flat tire is next to zero. Additionally, air rarely escapes from these tires.

Seat Light

This light is lit up when the seat is open, and turns off when the seat is shut.



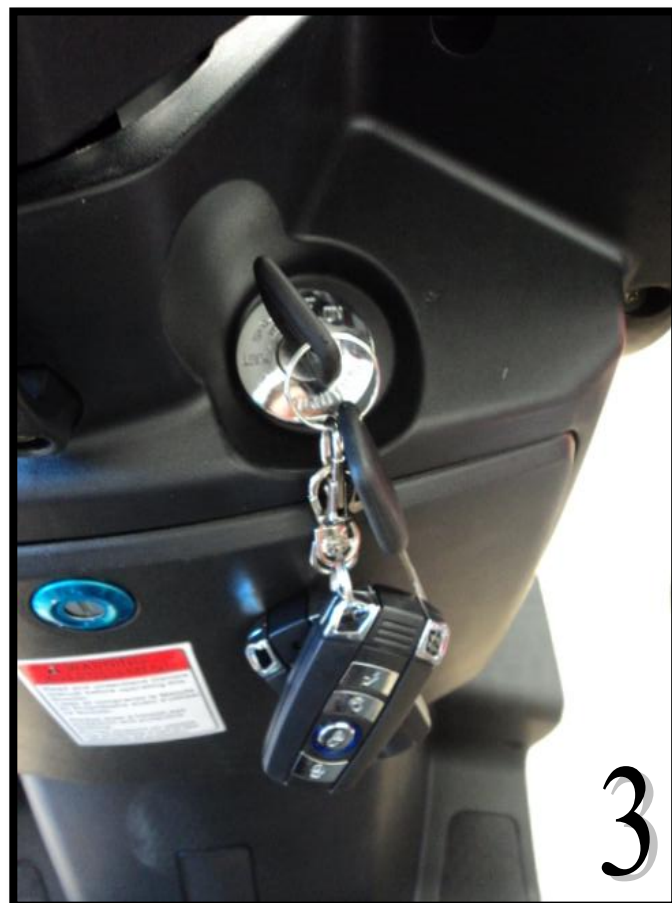
Circuit Breaker

The circuit breaker controls the power running through the bike from the battery. When the switch is flicked on, power flows throughout the bike and all functions work. When the switch is flicked off, power does NOT flow through the bike, and none of the electrical aspects will work on the bike.

WARNING!

In the winter time, fully charge the bike and turn the circuit breaker off for proper battery maintenance. Turn it back on once a month and fully charge the battery to ensure maximum battery life.

Don't leave it uncharged for extended periods of time!



Key Positions in Ignition

1. This is the 'on' position. This position is reached when the key is turned to the right, from the off position. The bike will turn on, and all functions on the handlebars will work.
2. This is the 'off' position. The key simply rests in the bike, and the bike is not turned on.
3. This is the handlebar lock position. This position is reached when the key is pushed in, and then turn to the left, from the off position. This locks the handlebar when it is turned all the way to the left. (The handlebar must be turned all the way to the left before the key will turn).
4. Turning the key to the left when in the "off" position without pushing it in will open the seat lock.

WARNING!

Do not turn on the bike without sitting on it first, otherwise you will risk touching the throttle by accident and having it run off by itself.

Note: If the bike is turned on using the remote start, it can only be turned off using the 'unlock' button on the remote.

Unlock

This button unlocks the bike. It cancels all the functions of the 'lock' button. (Alarm sounding, back wheel lock) It also turns the bike off when the remote start is activated.

Remote Start

This button turns on your bike, without the use of the key, when it is clicked twice in succession. This performs the same actions as manually turning the key to the right in the ignition. (All the functions on the handlebar can be used)

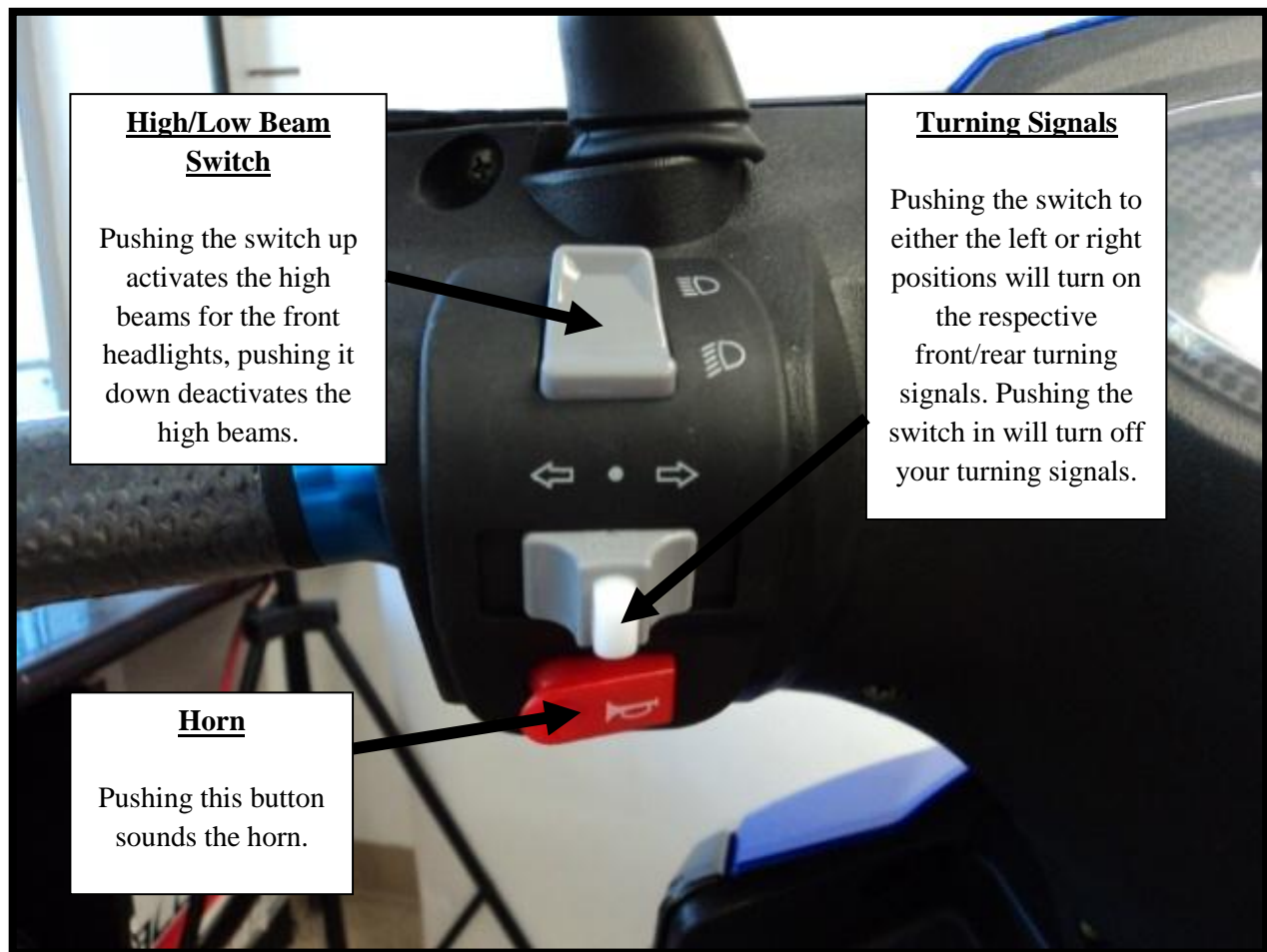
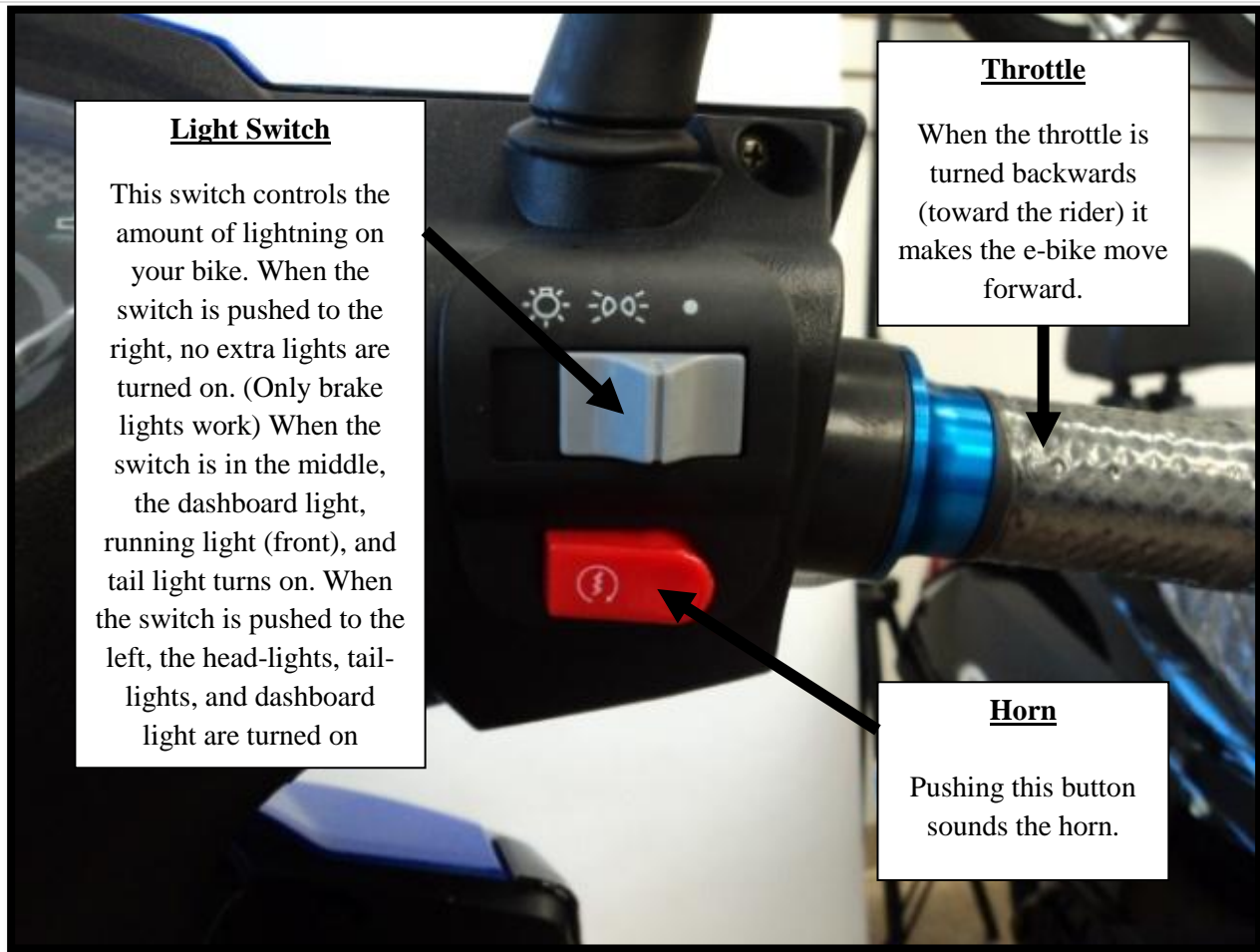
Lock

This button locks the bike. When the bike is locked, any physical movement or vibrations to the bike will cause the alarm to sound. If the back wheel is moved when the bike is locked, the back wheel will lock up and the alarm will sound loudly.

Bell

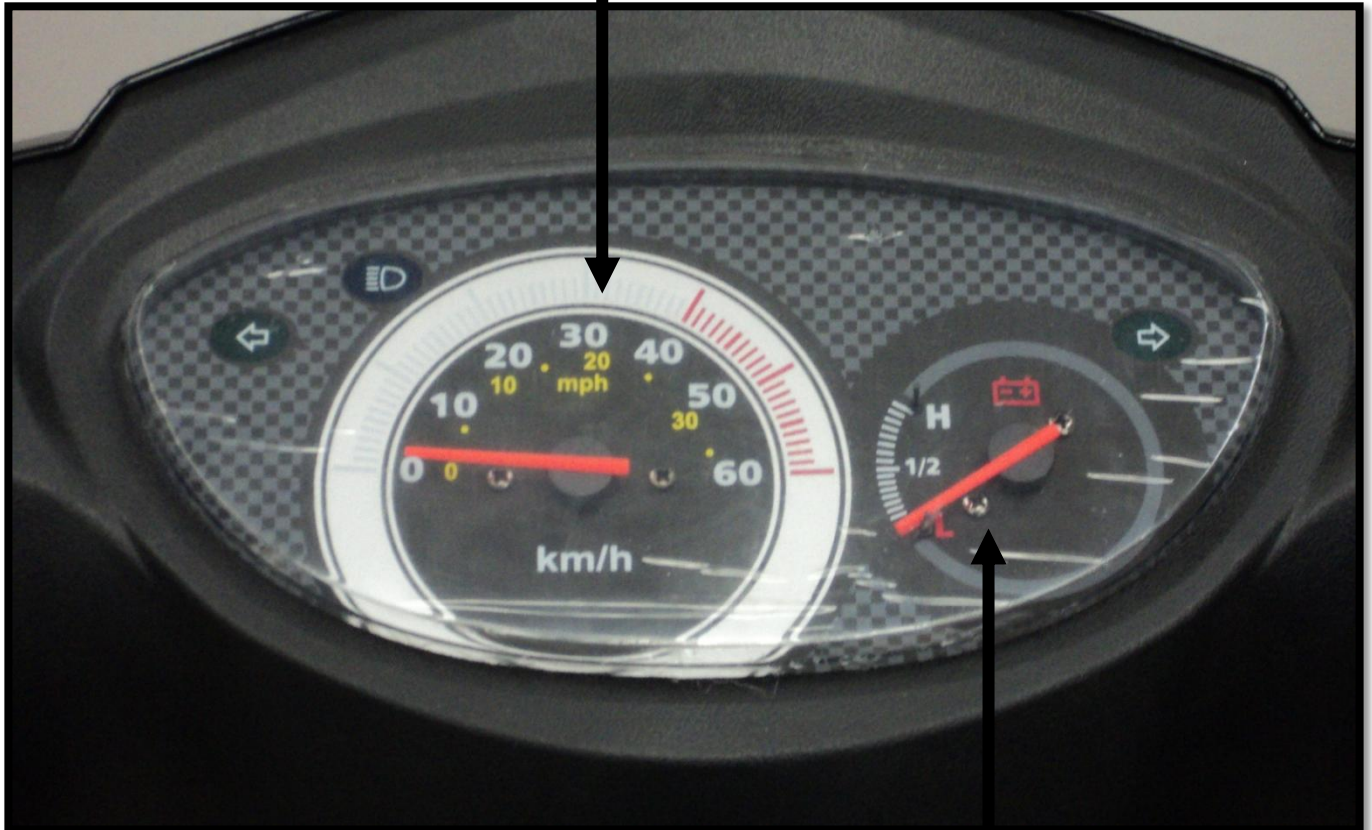
When this button is clicked, the bell sounds. (Similar sound to the alarm) This button is useful for locating your bike.





Speedometer

This shows the speed you are going at once the bike is running.



Power Gauge

This meter demonstrates the remaining amount of electricity available in your battery. H indicates High energy and L indicates Low energy.

Note: When you first turn on your e-bike, the battery life meter needle will go immediately to high (H) and will drop to its accurate level once you (sit on your bike and turn the throttle) driving the bike.

E-bike Registration

Once you have purchased an Emmo E-bike, please register your vehicle with us to validate your warranty.

In order to register your e-bikes, please follow the steps listed below:

1. Fill out the following form:

Invoice Number:

Purchase Date:

Motor Number:

E-bike Model and Colour:

Store Location:

Customer Name:

Home Address:

Phone Number:

E-mail:

Survey:

How did you find out about Emmo Inc.? (Please select the options that apply)

☐ Returning Customer ☐ Family/Friend ☐ Passing by Store ☐ Kijiji
☐ TERA ☐ Google ☐ Yelp ☐ Other _____

2. Send the information listed above to our e-mail: info@emmo.ca

3. Wait for a confirmation e-mail from Emmo Inc.

Thank you for Choosing



GREEN YOUR LIFE

Connect With Us!

Stay tuned for updates regarding new e-bike models, special deals and more!

OFFICIAL WEBSITE: WWW.EMMO.CA



www.facebook.com/EmmoCanada



info@emmo.ca

Any laws/regulations regarding “E-bikes” can be found on the Ministry of Transportation website:

www.mto.gov.on.ca

If you have further questions, please contact us at:

438 Spadina Avenue, Toronto ON

Toll Free: 1 888 510 3666 Tel: (416) 792-3227 Fax: (416) 792-6736

Email: info@emmo.ca