

# Getting Your Transit Online with GTFS



GTFS Builder is a Simple, **no-cost** Excel tool with training videos to create and manage your General Transit Feed Specification (GTFS) files for online trip planning, publishing schedules to your smartphone, and much more. Ready to dive right in?



Guide potential riders to your routes using Google Maps or other online resources? GTFS helps market your services to a wider audience. GTFS also supports Title VI analysis and route planning.

## How will a “GTFS” Serve My Agency and My Riders?

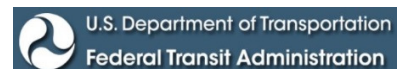
General Transit Feed Specification (GTFS) **standardizes** your schedule and **precisely locates** your bus stops. GTFS data offers your agency the following benefits with a quick snapshot:

1. *One Dataset:* Riders can plan trips at Google, Bing, Yahoo and Apple maps – online.
2. *Schedule Output:* Simple, basic route schedule output for use on your website or printed schedule.
3. *Ease Travel Training:* trip plans can be set for specific dates and arrive or depart times & display fares.
4. *Interactive Maps:* View routes – click or zoom to your stop and route!

The image displays three screenshots of transit planning interfaces. The top screenshot shows Google Maps with a route from Westfield Annapolis to Annapolis, listing options like Gold (20 min, \$2.00) and Green (16 min, \$2.00). The middle screenshot shows Bing Maps with a route from Westfield Annapolis to Annapolis, listing options like Green (16 min, \$2.00) and uberX (10 min, \$8-11). The bottom screenshot shows a smartphone app interface with a list of transit options including Gold, Green, and uberX.

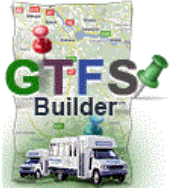
1. Plan trips via mobile phone trip on Google Maps, Bing Maps or other trip planners

1. Plan trips via Bing Maps



Green	West St. at Somerville	West St. opp. Library	West St. at Lafayette Ave.	West St. at Church Circle	Compromise St. at St. Mary's St. Ctr.	Eastport Shop. Ctr.
Westfield Mall	12:30 PM	12:34 PM	12:38 PM	12:42 PM	12:44 PM	12:47 PM
	1:00 PM	1:04 PM	1:08 PM	1:12 PM	1:14 PM	1:17 PM
	1:30 PM	1:34 PM	1:38 PM	1:42 PM	1:44 PM	1:47 PM
						1:53 PM

2. Schedule Output: Directly from GTFS Builder to use at your website or printed schedules



3. Ease Travel Training: Help your riders find routes and one-way adult fare, by when they want to depart or arrive and make travel training easier!

3. Arrive at the VA Clinic by 9 a.m. for \$4.00

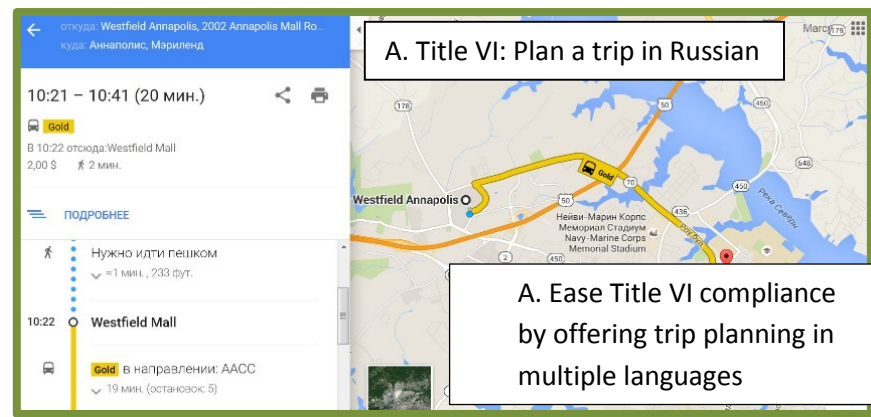
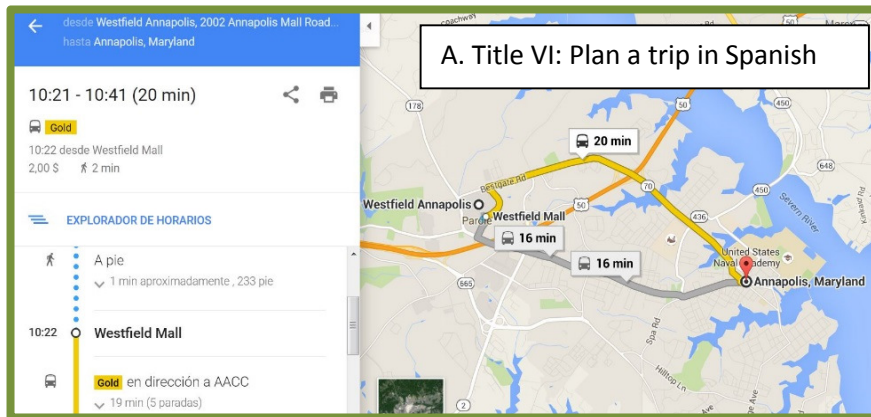
4. Route 15 Route Map: San Luis Obispo RTA

4. Interactive Route Maps: Put your routes online with interactive maps

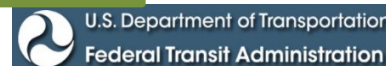
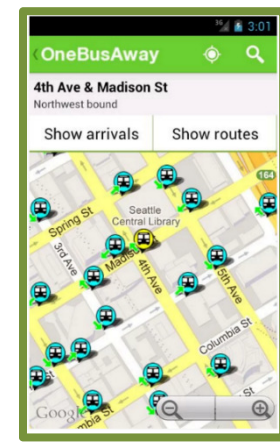
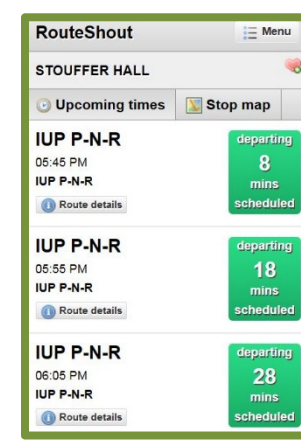


## Enhance Marketing, Partnerships, and Transit Planning! Easy as A, B, C...

- A. GTFS offers trip planning in a variety of languages to help meet Title VI for your community.
- B. GTFS is the data for many “apps” or applications like WalkScore or RouteShout which display transit information based on users’ location or intended commute.
- C. GTFS powers software route planning tools like ReMix (getremix.com) to show the effects of service changes, or to share data-enabled maps with your community for [public feedback](#).
- D. Participate in forthcoming USDOT National Transit Map <http://gis.rita.dot.gov/Transit/>
- E. To offer real-time next departures via applications like OneBusAway, you need to start with GTFS!



B & C. “Apps” e.g. RouteShout for schedules & OneBusAway & route planning tools displays Title VI impacts on low-income households: ReMix



## How (soon) can my transit agency go online with GTFS?

### Use National RTAP's GTFS Builder!



*GTFS Builder is a Simple, **no-cost** Excel tool with training videos to create and manage your General Transit Feed Specification (GTFS) files for online trip planning, publishing schedules to your smartphone, and much more. Ready to dive right in?*

### Visit NationalRTAP.org

1. Activate or log-in to your account at National RTAP in the Cloud.
2. Add the GTFS Builder.
3. Watch the video: Should my agency consider GTFS Builder?
4. Optionally, download the Checklist & Getting Started Guide.
5. Download the GTFS Builder tools.
6. Watch the Basic and Advanced workshop webinars, found in the GTFS Builder Support Center Steps 1-2-3 <http://nationalrtap.org/supportcenter/Builder-Apps/GTFS-Builder> and some or all of the brief training videos.
7. Start filling-in the GTFS Builder spreadsheets and build one entire validated route.
8. Follow the training tutorials which explain all the necessary steps.
9. Reach out to National RTAP for technical assistance, as needed, [support@nationalrtap.org](mailto:support@nationalrtap.org).

