

Anaesthesia,  
Critical Care & Pain  
Dermatology  
General Practice  
Plastic Surgery  
Radiology  
Trauma & Orthopaedics

Val d'Iserre  
Centre de Congrès  
27-30 January, 2014

education in a perfect location  
**25**  
years  
doctors updates

<sup>TM</sup>  
**doctors updates**

doctors  
updates<sup>TM</sup>

[www.doctorsupdates.com](http://www.doctorsupdates.com)



**Meeting Director**

J Bernard Liban

**Organising Committee**

George Collee, J Bernard Liban,  
Neil Soni, Vivien Thomas

**Programme Coordinators**

**Anaesthesia, Critical Care and Pain**

George Collee

**Dermatology**

Sarah Walsh

**General Practice**

Jane Harrop-Griffiths and Adam Jones

**Plastic Surgery**

Caty Milroy and Joy Odili

**Radiology**

Charles House and Samantha Read

**Trauma and Orthopaedics**

Simon Bridle



Doctorsupdates wishes to acknowledge the generous support  
from the following companies and institutions:

**Cavendish Medical**

**Ellis Brigham**

**Fannin UK**

**Medical Defence Union**



## Welcome to Val d'Isere and Doctorsupdates 2014!

**DOCTORSUPDATES** are proud to have been providing 'education in a perfect location' for 25 years now, and would like to welcome you to this, our anniversary meeting.

The winter doctorsupdates meeting is the first truly multidisciplinary meeting of its kind. As well as Anaesthetics, Critical Care and Pain we now welcome Radiology, Trauma & Orthopaedics, Plastic Surgery, General Practice and Dermatology for an educational week. There are both specialty specific academic programmes and also many joint academic sessions. This provides a unique opportunity for exchange of ideas, creation of new projects, problem solving and networking. We learn from each other and the conference now has the atmosphere of an educational festival.

Our chosen charities this year are **Lifebox** who provide vital equipment, such as pulse oximeters, to low resource countries and **Syria Relief**, organization providing medical help to civilians caught up in this horrific conflict. Please show your support in any way you can.

Val d'Isere is one of the best ski resorts in Europe. Mountain safety is our prime concern outside the Congress Centre. Please pay attention to all the safety notices and adhere strictly to the ski code. **If you intend skiing off piste, never do so without a guide, wear a helmet and carry the right safety equipment.**

We would like to thank all the speakers for their contributions to the Scientific Programme. Doctorsupdates are extremely proud of their academic reputation, and can assure you of a relaxed, healthy and informative four days, of **education in a perfect location**.

We hope you will all enjoy our 25th Anniversary meeting!

On behalf of the Organising Committee

J Bernard Liban

27th January 2014

## 3rd Dermatology Update

### Programme Co-ordinator: Sarah Walsh

Jill Adams	Consultant	Musgrove Park Hospital, Taunton, Taunton
Ben Aldridge	St 3-7	Canniesburn Plastic Surgery Unit - Glasgow,
Richard Ashton	Consultant	Portsmouth, Titchfield
Andrew Camilleri	Consultant	Luton & Dunstable Hospital NHS Trust
Catriona Henderson	Consultant	Southampton
Susannah Hoey	Consultant	Royal Victoria Hospital Belfast
Jen Jones	Consultant	Royal Free Hospital, London
Claire Lowry	Consultant	Lewisham University Hospital
Melissa Manahan	Other	Queensland Institute Of Dermatology, Brisbane
Birgit Pees	Consultant	University Hospitals Southampton NHS Trust
Ivan Robertson	Consultant	Royal Brisbane And Women's Hospital
Sarah Walsh	Consultant	King's College Hospital NHS Trust, London
Fiona Worsnop	St 3-7	St George's Hospital NHS Trust, London

## 4th General Practice Update

### Programme Co-ordinator: Dr Jane Harrop-Griffiths and Adam Jones

Fiona Alexander	General Practitioner	Victoria Medical Centre London SW1, London
Phillip Alstead	General Practitioner	Wrexham
Devrim Beyzade	General Practitioner	Lawrence House Surgery, Haringey, London
Claire Brosnan	Other	Gp2 At Trescobeeas Gpp Falmouth, St Agnes
Peter Fermie	General Practitioner	Park Medical Centre, Claygate
Rosalind Harpur	General Practitioner	Hawkhill Medical Centre Dundee, Dundee
Isobel Heyworth	General Practitioner	Freelance, Manchester
Patricia Houlston	General Practitioner	Health Education West Midlands, Bromsgrove
Adam Jones	General Practitioner	Upton
Marina Malthouse	Consultant	Dorothy House Hospice, Bath
Amir Mansoor	General Practitioner	Barbly Surgery, London
Susan Martin	General Practitioner	Saddleworth Medical Practice, Oldham
Terry McCormack	General Practitioner	Whitby Group Practice, Whitby
Tan Mustafa	St 3-7	Ruislip Manor
Louise Nolan	St 3-7	Mid Essex, Billericay
Emeka Okaro	Consultant	Barts & The Royal London Hospital
Sibel Peck	General Practitioner	Springfield Hospital, Black Notley
Susan Plumley	General Practitioner	Putney Group Medical Centre, Putney
Isabelle Schlikker	General Practitioner	Notre Dame Tournai, Frasnes Lez Buissenal
Fiona Sneyd	Consultant	Liskeard
Rosalind Spielmann	General Practitioner	Hawkhill Medical Centre, Dundee
Glyn Stockton	General Practitioner	Dr Stockton And Dr Thompson, Stockport
Penny Sumption	General Practitioner	The Surgery St Germans Plymouth, Saltash
Louise Thompson	General Practitioner	Dr Stockton And Dr Thompson, Stockport
Alexia Van Der Velde	General Practitioner	Private Practice, Cape Town
Dev Verma	General Practitioner	London
Mary Denise Walton	Associate Specialist	Cayman Islands, George Town



# 8th Orthopaedic & Trauma Update

## Programme Co-ordinator: Simon Bridle

Ian Barlow	Consultant	Dorset County Hospital, Dorchester
Michael Beverly	Consultant	Ealing Hospital, Richmond
Simon Bridle	Consultant	St George' Hospital, London
Jorge Cruz De Melo	Consultant	Hospital Da Arrábida - Porto
Huw David	Consultant	Derriford Hospital, Plymouth, Broadhempston
Sarah Davies	Consultant	English Institute Of Sport, Loughborough
Ricardo Frada	St 3-7	Centro Hospitalar, Porto
Aurora Gonzalez-Castro	Consultant	Luton & Dunstable NHS Trust, Harpenden
Paul Hamilton	Consultant	Epsom and St Helier
Adrian Harvey	Consultant	Royal Bournemouth NHS Trust, Bournemouth
Matthew Henderson	Consultant	Gloucestershire Royal Hospital, Cirencester
Roger Jaeken	Ass Specialist	Az Heilige Familie, Keerbergen
David Johnstone	Consultant	BMI The Chiltern Hospital, High Wycombe
Kc Kong	Consultant	North East London Treatment Centre
Fernando Leal	St 3-7	Chedv, Paços De Ferreira
Tommy Lindau	Consultant	Pulvertaft Hand Centre, Derby, Duffield Belper
Helen Mackay	St 3-7	Wrightington Hospital, Liverpool
Rory Macnair	St 3-7	Glan Clwyd Hospital, Wales
Sam Mcelroy	Consultant	The Chiltern Hospital, Great Missenden
Manuel Mendonça	Consultant	Hospital São Sebastião Chedv, Gaia
Lawrence O'Hara	Consultant	Royal Bournemouth Hospital, Poole
Will Peckett	Consultant	Kemh Bermuda, Hamilton
Derek Pegg	Consultant	Leighton Hospital, Crewe, Spurstow, Tarporley
Nader Rehmatullah	St 3-7	Aintree University Hospital, Stockton Heath
Robin Rice	Consultant	Nevill Hall Hospital, Abergavenny, Cwmbran
Annemie Schuerwegh	Ass Specialist	Antwerpen, Belgium
Dominic Simon	Consultant	Basingstoke Hospital, Winchester
Razvan Stoita	St 3-7	St George's Hospital, London
Katarzyna Studnicka	Other	Bradford Royal Infirmary, Shipley
Nuno Tavares	St 3-7	C.H.E.D Vouga, Santa Maria Da Feira
Andrew Waterfield	Consultant	Qeii Hospital, Welwyn Garden City, St Albans
Mark Webber	Consultant	Central Manchester Foundation Trust
Hywel Williams	Consultant	York Hospital, York

## Doctors Updates 2013

### Orthopaedic Sessions

**Convenor – Simon Bridle (Consultant orthopaedics – St George’s Hospital)**

#### Speakers

Mr Dinesh Nathwani (Consultant Orthopaedics – Imperial College)  
Mr. Joshua Bridgens (Consultant Orthopaedics – Leeds)  
Mr Tommy Lindau (Consultant Hand Surgeon – Derby Hand Unit)  
Mr Paul Hamilton (Consultant Orthopaedics – Epsom / St Helier Hospital)  
Mr Jason Bernard (Consultant Orthopaedics – St George’s Hospital)  
Prof John Axford (Consultant Rheumatologist)  
Mr Sam McIlroy (Consultant Orthopaedics – Stoke Mandeville / Wycombe)  
Mr David Johnstone (Consultant Orthopaedics – Stoke Mandeville / Wycombe)  
Prof Alister Hart (Consultant Orthopaedics – Royal National Orthopaedic / UCL)  
Mr Raz Stoita (Hip fellow – St. George’s Hospital)  
Ed Butler - APOS therapist

#### Free Paper Session

**Chair – Simon Bridle**

**Judge – Professor Alister Hart**

- 1) Mini-invasive stabilization of the medial patello-femoral ligament with a single bone anchor suture for chronic patello-femoral instability -  
Nader Rehmatullah, Wirral University Teaching Hospital
- 2) OOPT orthopaedics and trauma, Chambery, France -  
Helen Mackay, Wrightington Hospital
- 3) Ischiofemoral impingement. Endoscopic treatment -  
Fernando Leal, Centro Hospitalar de Entre o Douro e Vouga
- 4) Cementless Surface Replacement Arthroplasty For Primary Glenohumeral Osteoarthritis And Cuff Tear Arthropathy -  
Nicholas Furness, Great Western Hospital NHS Foundation Trust, Swindon
- 5) Arthroscopic treatment of acetabular chondral lesions -  
António Jorge Cruz de Melo, Centro Hospitalar de Entre o Douro e Vouga
- 6) Evaluation of Notch-width Index, Bicondylar width and Notch width as risk factors for ACL injury. Comparative study -  
Nuno Tavares, Centro Hospitalar de Entre o Douro e Vouga
- 7) Patellofemoral arthroplasty -  
Manuel Mendonça, Centro Hospitalar de Entre Douro e Vouga
- 8) Medial Unicompartmental Arthroplasty -  
Ricardo Frada, Centro Hospitalar de Entre Douro e Vouga
- 9) Lateral positioning - a key to successful reduction of ankle fracture with talar shift -  
Katarzyna Studnicka, Bradford Royal Infirmary
- 10) Treatment Of Scaphoid Non-Union With Vascularized Bone Graft And Herbert’S Screw Fixation – A Retrospective Study - Tiago Frada
- 11) A new look at joint function and bone blood flow -  
Michael Beverly, Ealing Hospital
- 12) Intra-Articular Fractures Of The Calcaneus, A Retrospective Study On Surgical Treatment And Complications. - Bruno Pereira, Hospital de Braga

**The full programme has been approved for 14 CPD credits by the British Orthopaedic Association**



# 11th Plastic Surgery Update

## Programme Co-ordinators: Caty Milroy, Joy Odili

Giles Bantick	Consultant	Chelsea & Westminster Hospital
Jeremy Birch	Consultant	Oxford University Hospital, Oxford
Daniel Butler	St 3-7	Royal Free Hospital, London
Jonathan Clibbon	Consultant	Norfolk And Norwich,
David Coleman	Consultant	The John Radcliffe Hospital, Oxford
Baljit Dheansa	Consultant	Queen Victoria Hospital, Crowthorne
Amer Durrani	Consultant	Addenbrooke's Hospital, Cambridge
Diogo Franco	Professor	Federal University Of Rio De Janeiro
Onur Gilleard	St 3-7	Epsom
Matthew Griffiths	Consultant	Broomfield Hospital, Chelmsford
Stephen Hamilton	Consultant	Royal Free London, London
Stuart Hamilton	Consultant	Edinburgh
Matthew James	Consultant	St Thomas' Hospital, London
Jacqueline Lewis	Consultant	Charing Cross Hospital, London
Simon Mackey	Consultant	Queen Victoria Hospital, East Grinstead
Catherine Milroy	Consultant	St George's Hospital, London
Simon Overstall	Consultant	The Royal Melbourne Hospital, Brighton
Siobhan O'ceallaigh	Consultant	University Hospital Of South Manchester
Nicola Petrie	Consultant	John Radcliffe Hospital, Oxford,
Richard Price	Consultant	Cambridge,
Victoria Rose	Consultant	Guy's & St Thomas' London
Yasemin Tavsanoğlu	St 3-7	Epsom
Michael Timmons	Consultant	Bradford Royal Infirmary,
Dean Trotter	Consultant	Royal Melbourne Hospital, Australia
Michael Tyler	Consultant	Stoke Mandeville Hospital
Mark Van Der Velde	Consultant	Private Practice, Cape Town
Stuart Wilson	Consultant	Wythenshawe Hospital, Manchester





# BAPRAS

British Association of Plastic  
Reconstructive and Aesthetic Surgeons

Catherine Milroy  
By email

10<sup>th</sup> January 2014

Dear Catherine

Doctors' Update, Val D'Isere  
27<sup>th</sup>-30<sup>th</sup> January 2014

Thank you for your application for CME approval of the above meeting. I am pleased to inform you that it has been approved for CME by BAPRAS. Participants may claim 1 CME credit for each hour of education, excluding any time spent on refreshment breaks. On this basis, credits for full attendance are allocated as follows:

27 <sup>th</sup> January:	4 points
28 <sup>th</sup> January:	4 points
29 <sup>th</sup> January:	4 points
30 <sup>th</sup> January:	4 points
Total:	16 points

The course organiser it is expected to retain a list of those who participated in the meeting, as well as a copy of any completed evaluations, for at least 5 years.

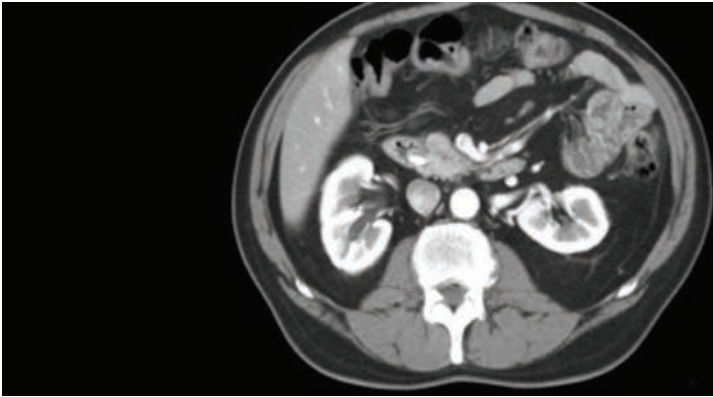
The Education Committee of the British Association of Plastic Reconstructive and Aesthetic Surgeons reserves the right to send a Committee Member to attend and validate your course unannounced, to confirm that the course as submitted for CME points does satisfy the criteria.

Please do not hesitate to contact me if I can be of any further assistance.  
Yours sincerely

J O'Donoghue, FRCSI(Plast)  
Honorary Secretary







# 13th Radiology Update

## Programme Co-ordinators: Charles House, Sam Read

James Bell	Consultant	Royal Free Hospital, London
Jocelyn Brookes	Consultant	UCLH, London
Michele Calleja	Consultant	The Royal National Orthopaedic Hospital
Michael Creagh	Consultant	Ashford & St Peter's NHS Trust, Peaslake
Mike Dobson	Consultant	Royal Preston Hospital
Mark Duncan	Consultant	UCLH, London
John Hanson	Consultant	Our Lady of Lourdes Hospital, Drogheda
Christopher Hare	Consultant	Jersey General Hospital
Alison Harris	Consultant	Taringa
Brian Holloway	Consultant	Royal Free Hospital, London
Charles House	Consultant	UCLH, London
David M Kasper	Consultant	Mayo Hospital, Phoenix, Arizona
Simon Malthouse	Consultant	Royal United Hospital, Bath
Aaron Milligan	Consultant	Craigavon Area Hospital, Newtownabbey
Andrew Morley	Consultant	Nevill Hall Hospital,
Sandeep Pathak	Consultant	Barts Health,
Emma Pelluet	Consultant	Whipps Cross University Hospital
Duncan Ramsay	Consultant	Royal Perth Hospital, Perth
Samantha Read	Consultant	University College London Hospital
Derek Svasti-Salee	Consultant	Kingston Hospital, London
Sidney Wan	Consultant	Nevill Hall Hospital, Monmouth
Peter Wylie	Consultant	Royal Free, Haddenham, Aylesbury
Russell Young	Consultant	Great Western Hospital, Swindon

## Guest Evening Speakers



### Meirion Thomas

Professor Meirion Thomas has been the Senior Surgeon on the Sarcoma and Melanoma Unit at the Royal Marsden Hospital for more than 20 years and has a near-unparalleled experience in the treatment of soft-tissue sarcoma. He has a track record for clinical research and service development. Recently, he has written articles in the Spectator magazine and in the Daily Mail relating to health tourism and what he regards as an inadequate Government response to this problem. He comes from a Welsh working class background and is committed to the NHS.



### Kevin Fong

Kevin Fong is a consultant anaesthetist at University College Hospital and Honorary Chair of Public Engagement in Science and Medicine at UCL. He holds degrees in Astrophysics, Medicine and Engineering and has worked with NASA's human space exploration programme at Johnson Space Center in Houston.

At University College London Kevin runs an undergraduate course in space medicine and extreme environment physiology and is founder and associate director of the Centre for Altitude, Space and Extreme environment medicine.

Through his recent Public Engagement Fellowship with the Wellcome Trust, Kevin has developed skills in science communication and broadcast and has been a regular presenter of science documentaries for BBC 2, Radio 4 and BBC World Service. His first book - about the relationship between medicine, exploration and survival in the 20th Century - is titled *Extremes: Life, Death and the Limits of the Human Body*.



## David Nott

David Nott is a consultant surgeon at St Mary's, Chelsea and Westminster and the Royal Marsden Hospital. He is a general laparoscopic surgeon with an interest in vascular surgery and trauma surgery. Every year for the past 20 years he has volunteered to work as a humanitarian surgeon around the world for a period of six weeks each year.



## Stephen Venables

Stephen Venables, mountaineer, writer, broadcaster and public speaker, was the first Briton to climb Everest without supplementary oxygen. He reached the summit alone, after climbing with a small American-Canadian team, by a new route up the gigantic Kangshung Face.

Everest was a thrilling highlight in a career which has taken Stephen right through the Himalaya, from Afghanistan to Tibet, making first ascents of many previously unknown mountains. His adventures have also taken him to the Rockies, the Andes, the Antarctic island South Georgia, East Africa, South Africa and of course the European Alps, where he has climbed and skied for over forty years.





## Programme Co-ordinator: George Collee

Paul Abbott	Consultant	Royal Blackburn, Heapey
Anthony Absalom	Professor	University Medical Center Groningen
Anthony Adams	Consultant	Lancashire Teaching Hospitals NHS Trust, Preston
Jonathan Adams	Consultant	Belfast City Hospital, Belfast
James Adeley	Other	Hm Senior Coroner, Spofforth, Harrogate
J C Aguirre Conesa	St 3-7	Charing Cross Hospital, London
Mohamed Ahmed	St 3-7	King's College Hospital, London
Samantha Allen	St 3-7	Basingstoke Hospital
Dilshan Arawwawala	Consultant	Broomfield, London
Glenn Arnold	Consultant	St Mary's Hospital, London
Elizabeth Ashley	Consultant	The Heart Hospital and UCLH, London
Tim Astles	St 3-7	Royal Liverpool University Hospital
Andy Bagwell	Consultant	Royal Gwent Hospital, Newport
Ian Bailes	St 3-7	Royal National Throat Nose And Ear Hospital, London
Andrew Baker	Consultant	Torbay Hospital, Newton Abbott
Graham Barker	Consultant	Norfolk And Norwich University NHS Trust
Richard Barnes	Consultant	Royal Berkshire Hospitals, Reading
James Barron	Consultant	Guy's Hospital, London
Julian Berry	Consultant	Royal Cornwall Hospital Trust, Mount Hawke
Filiep Bettens	Consultant	Imeldaziekenhuis Bonheiden, Boortmeerbeek
Heena Bidd	Consultant	Guys And St. Thomas NHS Foundation Trust
Sarah Billingham	St 3-7	University Hospital Of North Staffordshire, Stafford
Robert Bingham	Consultant	Great Ormond Street Hospital
Richard Black	Other	Wellsboro, Philadelphia
Tom Blanks	St 3-7	Lincoln County Hospital
Alex Bojarska	Consultant	South Manchester University Hospitals Nhs Trust
Mary Bowen	Consultant	Rotunda And Mater Misericordiae Hospitals, Dublin
Brigitta Brandner	Consultant	University College London Hospital
Simon Bricker	Consultant	Countess Of Chester Hospital
Rebecca Brooks	Staff Grade	Royal Cornwall Hospital Nhs Trust, Truro
Neil Brooks	Consultant	Leighton Hospital, Crewe
Peter Brooks	Consultant	Chelsea & Westminster, London
Peter Bunting	Consultant	Lancashire Teaching Hospitals NHS Foundation Trust
Paddy Butler	Consultant	Southampton Univ Hospital, Brockenhurst
Harvey Caesar	Consultant	Princess Of Wales Hospital, Cardiff
Ian Calder	Other	London
Mario Calleja	Consultant	Lancashire Teaching Hospital, Euxton
Kevin Camden-Smith	Consultant	Hampshire Hospitals Basingstoke
Robert Campbell	Consultant	Kilmacalm
Nick Campkin	Consultant	Pottrsmouth Hospitals NHS Trust
Alison Carling	Consultant	Royal Gwent Hospital, Penarth
Paul Carroll	Consultant	Ipswich Hospital Nhs Trust
Joseph Carter	Consultant	York Hospital
Sue Catling	Consultant	Singleton, Swansea
Alison Chalmers	Consultant	Queen Victoria Hospital Nhs Foundation Trust
Paul Charlton	Consultant	Leeds Teaching Hospital
Michelle Chia	St 3-7	Addenbrooke's Hospital, Cambridge
Eric Chung	Other	Addenbrooke's Hospital, Cambridge
Matthew Clayton	Ct 1-2	Charing Cross Hospital, Imperial College, London

Ben Clevenger	St 3-7	Royal Free Hospital, London
James Coakes	Consultant	Basingstoke Hospitals
George Collee	Consultant	The Royal Free Hospital, London
James Collie	Consultant	The Royal Berkshire Hospital, Reading
Timothy Cominos	St 3-7	Frenchay Hospital, Bristol
Andrzej Con	Consultant	St Mary's Hospital London
Laurence Cook	Consultant	Royal Oldham Hospital, Dobcross
Andrew Cooney	Consultant	Milton Keynes Ft, Winslow
Robin Cooper	Consultant	Gloucester Royal Hospital, Cheltenham
David Cooper	Consultant	James Cook University Hospital, Middlesbrough
Michael Copp	Consultant	Cheltenham General Hospital
Steve Costigan	Consultant	Furness General Hospital, Ulverston.
James Craig	Consultant	Royal Bournemouth Hospital, Poole
Richard Craig	Consultant	The Great Western Hospital, Cricklade
James Cremin	St 3-7	Imperial College
Brian Culbert	Consultant	Castle Hill Hospital, East Yorkshire
Jill Curtis	Consultant	Royal Gwent Hospital, Newport
Jill Dale	Consultant	Great Western Hospitals, Swindon
Helen Daly	Consultant	Royal Perth Hospital, Clarendon
David Daniels	Consultant	Guys & St Thomas' Hospital, London
Gerard Danjoux	Consultant	South Tees Nhs Foundation Trust
Mark Darowski	Consultant	Leeds Children's Hospital
Sarah Davies	Consultant	Leeds Teaching Hospitals
Annette Davis	Consultant	Alder Hey Children's NHS Foundation Trust, Liverpool
Himala De Zoysa	Consultant	St. George's Hospital, London
Madeleine Debusse	Consultant	Brighton and Sussex University Hospitals
Stephen Deegan	Consultant	Royal Bolton Hospital, Clitheroe
Nicholas Denny	Consultant	Queen Elizabeth Hospital Trust King's Lynn
Rachel Deyermund	Consultant	Ulster Hospital Belfast
Matt Dickinson	Consultant	Royal Surrey County Hospital, Guildford
Adam Dobson	Consultant	University Hospital Of South Manchester, Knutsford
Richard Dodwell	St 3-7	Liverpool Heart & Chest Hospital
Teresa Donnelly	Consultant	Royal Liverpool University Hospital Trust
Andrew Donovan	Consultant	Musgrove Park Hospital, Taunton
Al Dorman	Consultant	Musgrave Park Hospital, Taunton
Tony Doyle	Consultant	Dorset County Hospital, Dorchester
Maurice Dunstan	Consultant	Whittington Health
Claire Dunstan	Consultant	University Hospital Of Wales, Penarth
John Durcan	Consultant	Mid-Essex Hospitals NHS Trust, Chelmsford
Mark Edsell	Consultant	St George's Hospital, London
John Fairfield	Consultant	Leeds Teaching Hospitals
Swee Fang	Consultant	Homerton Hospital, London
Paul Farquhar-Smith	Consultant	The Royal Marsden NHS Foundation Trust, London
William Fish	Consultant	Royal Cornwall, Truro
Nicholas Flatt	Consultant	Royal Albert Edward Infirmary, Wigan, Chorley
Michael Frost	Consultant	Broomfield Hospital
Jens Full	Consultant	Homerton University Hospital, London
Ann Gallagher	Consultant	Ulster Hospital, Belfast
Charles Garcia-Rodriguez	Consultant	Gloucestershire Royal Hospital, Cheltenham
Elham Gavin	Consultant	Liverpool
Christopher Gildersleeve	Consultant	University Hospital Of Wales, Cardiff
Hania Glinska	St 3-7	King's College Hospital, London
George Godfrey	St 3-7	Frimley Park
David Goldhill	Consultant	Retired, Melton
Ionadi Golumbeanu	Consultant	Leeds Teaching Hospital Trust
Mark Green	Consultant	North Downs Hospital, Caterham, Surrey
Deane Halfpenny	Consultant	Homerton University Hospital, London
Peter Hambly	Consultant	Oxford University Hospitals NHS Trust, Oxford
Sarah Hammond	Consultant	St George's Hospital, London
Duncan Hancox	Consultant	Royal Preston Hospital, Clitheroe
Jonathan Harris	Consultant	Northwick Park & St Marks, London
Mike Harris	Other	Formerly Cork University Hospital, Cork
William Harrop-Griffiths	Consultant	Imperial College Healthcare NHS Trust, London
David Hawkins	Consultant	Heart of England NHS Trust, Birmingham

Date	Anaesthesia / Critical Care Main Auditorium	Trauma & Orthopaedics Valerian 1	Plastic Surgery Valerian 2	Radiology Ancolie 1&2																														
Monday 27th January  8.00 - 9.30am  Chair: C Nightingale	Anaesthesia for bariatric surgery Mark Bellamy 3A13  Obstructive Sleep Apnoea Gerard Danjoux 2A03, 3A13  Management of pneumothorax Ben Maxwell 2A12, 3A10	Trauma Update Chair - Dinesh Nashwani Paediatric fracture Joshua Bridgens Wrist fracture Tommy Lindau Lisfranc injury Paul Hamilton Spinal fracture Jason Bernard	Introduction – Catherine Milroy The posterior interosseous artery free flap David Floyd  Breast tips Adam Searl  Refinements in abdominoplasty David Floyd	Welcome and Introduction Charles House and Sam Read  Imaging from the Pain Perspective Neal Evans  Splenic Trauma Duncan Ramsay  Imaging Acute Pancreatitis Sam Read																														
4.30- 6.15pm  Chair: Prof. J Pandit	Main Auditorium Multidisciplinary Session WHAT'S NEW IN:  <table><tr><td>Neurology</td><td>Angus Kennedy</td><td>3F00,2A12</td><td>Haematology</td><td>James Griffin</td><td>3I00, 2A12</td></tr><tr><td>Respiratory Medicine</td><td>Suveer Singh</td><td>3G00, 2A12</td><td>Orthopaedics</td><td>Alister Hart</td><td>3I00, 2A12</td></tr><tr><td>Cardiology</td><td>Sanjay Sharma</td><td>3G00, 2A12</td><td>Plastic Surgery</td><td>Joy Odili</td><td>3I00, 2A12</td></tr><tr><td>Hepatology</td><td>Matt Foxton</td><td>3A04, 2A12</td><td>Dermatology</td><td>Sarah Walsh</td><td>3I00, 2A12</td></tr><tr><td>Radiology</td><td>Alex Kirkham</td><td>3I00, 2A12</td><td>Anaesthesia</td><td>Robert Sneyd</td><td>3I00, 2A12</td></tr></table>				Neurology	Angus Kennedy	3F00,2A12	Haematology	James Griffin	3I00, 2A12	Respiratory Medicine	Suveer Singh	3G00, 2A12	Orthopaedics	Alister Hart	3I00, 2A12	Cardiology	Sanjay Sharma	3G00, 2A12	Plastic Surgery	Joy Odili	3I00, 2A12	Hepatology	Matt Foxton	3A04, 2A12	Dermatology	Sarah Walsh	3I00, 2A12	Radiology	Alex Kirkham	3I00, 2A12	Anaesthesia	Robert Sneyd	3I00, 2A12
Neurology	Angus Kennedy	3F00,2A12	Haematology	James Griffin	3I00, 2A12																													
Respiratory Medicine	Suveer Singh	3G00, 2A12	Orthopaedics	Alister Hart	3I00, 2A12																													
Cardiology	Sanjay Sharma	3G00, 2A12	Plastic Surgery	Joy Odili	3I00, 2A12																													
Hepatology	Matt Foxton	3A04, 2A12	Dermatology	Sarah Walsh	3I00, 2A12																													
Radiology	Alex Kirkham	3I00, 2A12	Anaesthesia	Robert Sneyd	3I00, 2A12																													
6.45 - 7.30pm Chair: G. Collee	Main Auditorium HEALTH TOURISM - Meirion Thomas 3100																																	

Tuesday 28th January  8.00 - 9.30am  Chair: P Brooks	Managing cardiac ischaemia Sanjay Sharma 3G00  Perioperative management of COPD Suveer Singh 3G00  EPO in cyclists and trauma victims Rhys Thomas 2A12	EARLY OA KNEE (with GPs) Chair - Simon Bridle  Physiotherapy and APOS therapy Ed Butler  Rheumatological management John Axford  Surgical management Dinesh Nathwani	JOINT WITH DERMATOLOGY Melanoma Update Joy Odili  Giant BCC Amir Durani  Evidence based surgical management of melanoma Benji Aldridge	MRI of the hand and wrist M Calleja  Conus Syndrome post Lumbar foraminal nerve root block R Young  Maxillofacial imaging – what does the surgeon need Andrew Camilleri
4.45 - 6.15pm  Chair: Dr B Liban	Meet the Presidents 3J00  Robert Bingham - APA Ellen O'Sullivan - CoA of Ireland Jean-Pierre van Besouw - RCoA William Harrop-Griffiths - AAGBI	JOINT SESSION Chair – Simon Bridle Open tibia – MTC experience Dinesh Nashwani Soft tissue coverage of open tibia Victoria Rose Vascular complications of supracondylar fracture Joshua Bridgens		What a radiologist need to know: Chair: C House Obesity: the uphill struggle and downhill slope Claire Nightingale Interventional radiology in Women's Health Joe Brookes Advances in Sedation Robert Sneyd
6.45 - 7.30pm Chair: B Liban	Main Auditorium PLAYING IT SAFE – Life, death and mistakes in 21st century – Kevin Fong 3I00			

Wednesday 29th January  8.00 - 9.30am  Chair: P Razis	Patient Safety in Theatres Maurice Dunstan 1I01, 1I03  30 carotid artery cannulations Alistair McCrirkick 1I01, 1I03  Aftermath of an untoward fatal incident and preparation for the Coroner's Court James Adeley 1I01, 1I04	Management of back pain Investigation of back pain Jason Bernard Rheumatological cause John Axford Interventional pain management Brigitta Brandner Surgical management Jason Bernard Management of the malignant spine Jason Bernard	Telemedicine Balj Deansa  Traumatic Ear Reconstruction Greg O'Toole  Can breast reconstruction cause mortality David Coleman	Risks and Pitfalls Confessions of a medicolegal novice Sandeep Pathak What can we learn from a discrepancy meeting? Mike Dobson Medico-legal update for radiologists Charles Dewhurst
4.45 - 6.15pm  Chair: Dr E O'Sullivan	SHORT PAPERS / UPDATES Malignant Hyperthermia F Ramsden 2A06 Stroke volume response in normovolaemia George Godfrey 3A01 Management of amitriptyline overdose Matthew Milsome 1A02, 3C00 Paediatric pain – an update Richard Howard 2D05 Regional Anaesthesia – an update William Harrop-Griffiths 2G01, 2G04	SHORT PAPERS COMPETITION Judges Alister Hart and Tommy Lindau	Abdominoplasty I Steve Hamilton  Abdominoplasty II Balj Deansa  BAPRAS and the mysteries of NHS commissioning in England Mike Timmons	Imaging femoro-acetabular impingement Russell Houghton  Cutting edge prostate Alex Kirkham
6.45 - 7.30pm Chair: G. Collee	Main Auditorium MEDICAL AID IN SYRIA – David Nott 3I00			

Thursday 30th January  8.00 - 9.30am  Chair: K Mason	Depth of anaesthesia monitoring Anthony Absalom 1A02, 3A07  New guidance on sedation Robert Sneyd 3A07  Research Fraud Jaideep Pandit 1G02, 3J03	Updates on: Bone & joint infection in children Joshua Bridgens Achilles tendonitis Paul Hamilton Management of OA of hand and wrist Tommy Lindau Meniscal repair Sam McIlroy	Registrars Papers followed by: Investigated by the Taxman David Coleman  Transgender surgery Victoria Rose  Fat and the breast Jackie Lewis	Imaging Patellar Instability Charles House  Financial Update for Radiologists Mark Martin
4.45 - 6.15pm  Chair: R Sneyd	Ageing muscle – what happens to our muscles as we get old? Stephen Harridge 1A01, 2C01  Transfusion Triggers James Griffin 2A12  Generation Y Richard Marks 3J00	Arthroplasty Update What is going on at the trunion Alister Hart  Lessons from Australian Joint Registry Raz Stoita  DGH revision practice David Johnstone	Registrars Prize CRPS Tony Lindau Congenital hand surgery – South African experience Mark Van der Veld Dupuytren's contracture – 5y results of collagenase Tommy Lindau The NHSLA, MPS, MDU and us Mike Timmons	Radiology Update 2014 Brian Holloway  Mentoring doctors in difficulty Patricia Houlston  Feedback and Closing Remarks Charles House and Sam Read
6.20 - 7.00pm Martin Thomas	Main Auditorium HIGH ALTITUDE MEDICINE – DO YOU NEED OXYGEN? – Stephen Venables 3J02			



	General Practice Airelle	Dermatology Saline	Workshops Edelweiss	Workshops Centauree	Workshops Chardon Bleu
Monday 27th January  8.00 - 9.30am	<b>JOINT SESSION</b> <b>Introduction:</b> Jane H-G and Adam Jones // Sarah Walsh  <b>The red face – how I approach</b> Sarah Walsh  <b>Non-scarring alopecia – how I approach</b> Jennifer Jones		<b>Critical Care Medicine</b> Chair: C Waldmann 3C00  <b>ITU and the coroner</b> James Adeley  <b>Managing acute liver failure</b> Matthew Foxton  <b>Extending Guyton’s analysis</b> Jaideep Pandit	<b>Ultrasound guided Chronic Pain management</b>   Andrzej Krol 2G03	<b>Bronchoscopic workshop</b> <b>Tips &amp; tricks for perioperative care or ITU</b>  Suveer Singh 3G00
4.30- 6.15pm	<b>Multidisciplinary session</b> <b>WHAT’S NEW IN:</b>  <b>Neurology</b> A Kennedy <b>Respiratory Medicine</b> S Singh <b>Cardiology</b> S Sharma <b>Haematology</b> J Griffin <b>Orthopaedics</b> A Hart <b>Hepatology</b> M Foxton <b>Plastic Surgery</b> J Odili <b>Radiology</b> A Kirkham <b>Dermatology</b> S Walsh <b>Anaesthesia</b> R Sneyd				
6.45 - 7.30pm	<b>Main Auditorium Health Tourism -</b> Meirion Thomas				
Tuesday 28th January  8.00 - 9.30am	<b>JOINT SESSION WITH ORTHOPAEDICS</b> <b>EARLY OA KNEE</b> <b>Physiotherapy and APOS therapy</b> Ed Butler <b>Rheumatological management</b> John Axford <b>Surgical management</b> Dinesh Nathwani	<b>JOINT WITH PLASTIC SURGERY</b> <b>Melanoma Update</b> Joy Odili <b>Giant BCC</b> Amir Durani <b>Evidence based surgical management of melanoma</b> Benji Aldridge	<b>MEDICO-LEGAL SESSION</b>  <b>An audience with a Coroner</b> James Adeley 3I00  <b>Coroner’s role, reform, medical examiners, death certification and the legal landscape</b>	<b>Ultrasound guided Regional anaesthesia</b>  Aasifa Tredrey Fred Sage 2G03	<b>Subclavian line insertion</b>  Maurice Dunstan 1I01
4.30- 6.15pm	<b>Deaths in General Practice</b> James Adeley <b>Ankylosing spondylitis and rheumatological back</b> John Axford <b>COPD – prevention of hospital admissions</b> Lesley Harridge	<b>Psoriasis and psoriatic arthropathy – how I manage</b> John Axford  <b>Teledermatology: an antipodean perspective</b> Melissa Manahan	<b>Medical Ethics</b> Andrew Lawson 1F05	<b>ECGs and the treatment of angina</b> Sanjay Sharma 3G00  <b>Lung function test</b> Suveer Singh 3G00	<b>Financial planning workshop</b>  Mark Martin Hugh Davies
6.45 - 7.30pm	<b>Main Auditorium</b> <b>Playing it Safe - Kevin Fong</b>				
Wednesday 29th January  8.00 - 9.30am	<b>Finances - practice, personal and pensions</b> Mark Martin  <b>How to manage practice income and avoid cash flow problems - open discussion led by Adam Jones and Jane Harrop-Griffiths</b>	<b>Cautionary Tales from a Dermatologist</b> Christopher Dobson  <b>Dermoscopy Workshop</b> Birgit Pees and Catriona Henderson	<b>PAEDIATRIC ANAESTHESIA</b> Chair: Bob Bingham 3D00 <b>Neurotoxicity. What to tell the parents</b> Reema Nandi <b>Status epilepticus in children</b> Marek Darowski <b>Risk assessment and outcomes outside OR</b> Keira Mason	<b>Ultrasound guided regional anaesthesia</b>  Aasifa Tredrey Fred Sage 2G03	<b>The FRCA examination - what everyone needs to know</b>  Platon Razis 3J02
4.30- 6.15pm	<b>How to look after ourselves</b> Patricia Houlston <b>Clinical commissioning and the current climate</b> Peter Fermie <b>Confidentiality and all that!</b> Charles Dewhurst	<b>JOINT WITH GPS</b> <b>How to look after ourselves</b> Patricia Houston <b>Naval Dermatology – scurvy and other diseases</b> Richard Ashton	<b>AIRWAY PROBLEMS</b> Chair: P Groom 3A01 <b>An airway problem</b> A. Medniuk <b>A pain in the neck</b> G Mullen <b>An unusual CO2 trace</b> J Cronin <b>Videolaryngoscopy</b> I Hodzovic	<b>ECGs and the treatment of angina</b> Sanjay Sharma 3G00  <b>Lung function test</b> Suveer Singh 3G00	<b>Financial planning workshop</b>  Mark Martin Hugh Davies
6.45 - 7.30pm	<b>Main Auditorium</b> <b>Medical Aid in Syria - David Nott</b>				
Thursday 30th January  8.00 - 9.30am	<b>Viral illness in pregnancy -</b> Mr EmekaOkaro <b>Saving mothers’ lives: Key issues for General Practice</b> Melanie Griffin <b>Palliative Care Emergencies</b> Marina Malthouse	<b>Registrar Presentations:</b> Seshi Manam, Fiona Worsnop, James Shatwell  <b>Dermatological approach to mouthcare</b> Jill Adams	<b>Chronic Pain</b>  <b>MRI diagnosis and lumbar spine interventional treatment</b>  Magdi Mikhael 3E00, 2E03	<b>Ultrasound guided regional anaesthesia</b>  Aasifa Tredrey Fred Sage 2G03	<b>Trainees in difficulty</b>  Patricia Houlston 2H02
4.30- 6.15pm	<b>Musculoskeletal case studies</b> Gill Roberts <b>Childhood trauma and illness in adults</b> Mary Walton (USA) <b>Common symptoms due to rare conditions</b> Sanjay Sharma <b>Feedback and Close – Adam Jones &amp; Jane Harrop-Griffiths</b>	<b>Financial planning for dermatologists</b> Mark Martin <b>The pitfalls of confidentiality</b> Charles Dewhurst <b>Closing remarks</b> Sarah Walsh	<b>Dexmedetomidine in neuroanaesthesia</b> Anthony Absalom 3F00	<b>No Workshops</b>	
6.45 - 7.30pm	<b>Main Auditorium</b> <b>High Altitude Medicine - Stephen Venables</b>				

Martyn Hawkins	Consultant	Forth Valley Royal Infirmary, Stirling
Henrietta Hill	Consultant	Luton And Dunstable Hospital
Iljaz Hodzovic	Consultant	Royal Gwent Hospital
Stephen Holgate	Consultant	East Lancashire NHS Trust
Thomas Hollins	Consultant	Airedale NHS Trust
John Hollis	Consultant	Dorset County Hospital, Dorchester
Dan Horner	Consultant	Charing Cross Hospital, London
Alex Houston	Consultant	Royal Liverpool and Broadgreen
Jeremy Howard	Consultant	East Surrey Hospital, Redhill
Richard Howard	Consultant	Great Ormond Street Hospital, London
Richard Hughes	Consultant	Torbay Hospital
Kim Hunter	Consultant	Temple Street Children's Hospital, Dublin
Brendan Irvine	Other	Addenbrooke's, Cambridge
Chowdhury Islam	Consultant	Torbay Hospital
Daniel Jacobs	Consultant	Homerton University Hospital, London
David James	Consultant	Guy's & St Thomas's, London
Margaret Johnson	Staff Grade	North Hampshire Hospital, Basingstoke, Whitchurch
Richard Johnson	Consultant	St George's Hospital, London
Graham Jones	Consultant	Lancashire Teaching Hospitals NHS Trust, Preston
Will Jones	Consultant	Leeds Teaching Hospitals NHS Trust,
Patrycja Jonetzko-Ramsden	St 3-7	Plymouth/South West Peninsula
Rohit Juneja	Consultant	The Royal Marsden Hospital, London
Sibylle Jurgens	Consultant	Queen's Medcial Centre, Nottingham
Melanie Keel	Ass Specialist	Queen Victoria Hospital, East Grinstead
Katherine Kerr	Consultant	Belfast Trust, Belfast
Alexander Kidd	Consultant	Elective Orthopaedic Centre, Epsom
Wendy King	Consultant	Royal Surrey County Hospital, Midhurst
Anne Knight-George	Consultant	The Hillingdon Hospital, Chorleywood
Anita Kovacic	Consultant	Guy's and St Thomas' NHS, Kimberley Road
Carmen Lacasia Purroy	Consultant	Aintree University Hospital
Yeeman Lam	Consultant	Queen Victoria Hospital, East Grinstead
Eva-Maria Lang	Consultant	Luton And Dunstable Hospital
Miriam Langdon	Consultant	Cappagh National Orthopaedic Hospital, Dublin
Roger Langford	Consultant	Royal Cornwall Hospital, Truro
Laurent Lebreux	Consultant	C.H.R. Namur, Belgrade, Belgium
Andrew Lee	Consultant	Rcht, Perranporth
David Lee	Consultant	Lewisham & Greenwich Hospital
Floor Lemckert-De Jong	Consultant	
Dimitri Leschinskiy	Consultant	Queen Elizabeth Hospital, London
J Bernard Liban	Consultant	St George's Hospital, London
Karen Light	Consultant	St George's Hospital , London
Angela Lim	Ct 1-2	Basingstoke & North Hampshire Hospital
Rod Lindenbaum	Ass Specialist	North Devon District Hospital, Barnstaple
Bernadette Loughnan	Consultant	North West London Hospitals, London
Shona Love	St 3-7	National Hospital For Neurology & Neurosurgery
Mark Lynch	Consultant	Nuffield Health, Haywards Heath
Huw Maddock	Consultant	Abmu Lhb, Swansea
Beenu Madhavan	Consultant	University Hospital Lewisham, Croydon
Cliona Magee	Consultant	City Hospital Swbhs Nhs Trust, Birmingham
Arystarch Makowski	Consultant	Medway Nhs Foundation Trust, Gillingham
Claire Mallinson	Consultant	Guys And St Thomas NHS Foundation Trust
Hamid Manji	Consultant	Milton Keynes Hospital
Cathryn Mantovani	Consultant	East Sussex Healthcare NHS Trust
Ann Marsh	Consultant	University Hospital Lewisham, London
Keira Mason	Consultant	Boston Children's Hospital, Boston, Ma, USA
George Mathew	Consultant	Lewisham And Greenwich NHS Trust
Gary Matthews	Consultant	Royal Cornwall Hospital
Malvern May	Consultant	Basildon
Martin Mayall	Consultant	Kent And Canterbury Hospital
Stuart Mccorkell	Consultant	Guy's & St. Thomas's Hospitals, London
Alastair Mccrerrick	Consultant	Gloucestershire Royal Hospital, Gloucester
Eoin Mcdonnell	Consultant	St James Hospital, Leeds
Bronagh Mcelhenny	Consultant	Belfast City Hospital
John Mcloughlin	Consultant	Belfast

Sara Mcneillis	Consultant	Royal National Throat, Nose And Ear Hospital
Sarah Mcneilly	St 3-7	St Mary's Paddington, London
Abby Medniuk	St 3-7	Guys And St Thomas' Foundation Trust
Tristan Mehta	Other	Nottingham University Hospitals,
Neil Mercer	Consultant	Aintree University Hospital
Magdi Mikhael	Consultant	Queen's Hospital Romford, Greater London
Peter Mills	Consultant	Ipswich Hospital
Matthew Milsom	Staff Grade	Harrogate District NHS Foundation Trust
Olivia Mingo	Consultant	Royal Marsden Hospital
Beata Misztal	Consultant	Medwaynhs Foundation Trust, Hartlip
Parvez Moondi	Consultant	Queen Elizabeth, Kings Lynn
Emma Morecroft	Consultant	Hillingdon Hospital Nhs Foundation Trust
Peter Morgan	Consultant	Leeds Teaching Hospitals NHS Trust, Otley
Richard Morgan	Consultant	Salford Royal Hospital, Altrincham
Iwan Morris	Consultant	Royal Gwent Hospital, Newport
Andrew Mortimer	Consultant	Wythenshawe, South Manchester, Altrincham
Mike Mowbray	Consultant	Sherwood Forest Hospitals, Southwell
Gemma Mullen	St 3-7	University Hospital Aintree, Neston
John Myatt	Consultant	Imperial College Healthcare Nhs Trust, London
Bruce Neary	Consultant	Warrington Hospital, Hale
Vivienne Nelson	Consultant	St Helens And Knowsley Hospitals Trust, Prescott
David Niblett	Consultant	Bedford Hospital
Jayne Noden	Consultant	Bradford Teaching Hospitals Nhs Foundation Trust,
Joanne Norman	Consultant	Shepperton
David Nott	Consultant	London
Liz Ogilvie	St 3-7	St George's NHS Healthcare Trust, London
Glenda Oldroyd	Consultant	Bradford Teaching Hospitals Foundation NHS Trust
Helen Oliver	St 3-7	Barts and The London, London
Michael O'connor	Consultant	Great Western Hospital, Swindon
Sarah O'neill	Consultant	Salford Royal, Manchester
Pavol Palcovic	Consultant	Medway Maritime Hospital, Gillingham
Dominika Palcovicova	St 3-7	Medway Maritime Hospital, Gillingham
Jaideep Pandit	Consultant	Oxford University Hospital NHS Trust
Mason Pannell	Consultant	Queen Elizabeth Hospital, Woolwich
Gareth Parry	Consultant	Princess Of Wales, Porthcawl
Chetan Patel	Consultant	Queen Victoria Hospital, East Grinstead
Peter Patient	Consultant	Colchester
Mark Patten	Consultant	Luton & Dunstable, Harpenden
David Peck	Consultant	West Suffolk Hospital, Black Notley
Jean Perfettini	Consultant	Leeds General Infirmary
Elspeth Pickering	Consultant	Chelsea And Westminster, London
Robert Powell	Consultant	Leicester General Hospital
Yorick Rahman	Staff Grade	Ashford & St. Peter's Hospitals
Fiona Ramsden	St 3-7	Charing Cross, London
Jacqueline Raskovic	Consultant	Norwich
Jonathan Ratoff	Consultant	St Helier's Hospital
Platon Razis	Consultant	St George's Healthcare NHS Trust
Gemma Redmond	St 3-7	Royal Liverpool University Hospital
Peter Reide	Consultant	Hampshire Hospitals, Winchester
Zoe Ridgway	Consultant	Great Western Hospital, Swindon
Eizabeth Roberts	Consultant	Dartford And Gravesham Trust, Bromley
Selwyn Roberts	Consultant	University Hospital South Manchester
Marc Rocheteau	Staff Grade	Halifax Hospital
Heike Romer	Consultant	Royal Liverpool And Broadgreen Hospitals
Anisa Sabrine	Consultant	Great Western Hospital, Swindon,
Frederic Sage	Consultant	East Surrey Hospital, Redhill
Melinda Same	Other	Charing Cross Hospital, London
Peter Saunders	Consultant	Barts Health NHS Trust, London
Michael Scallan	Consultant	Retired, London
Andre Schipper	Consultant	Westfriesgasthuis Hoorn, Hoorn
Frank Schroeder	Consultant	St George's Hospital, London,
J Schutzer-Weissmann	St 3-7	
David Scott	Consultant	Royal Infirmary Of Edinburgh, Edinburgh
Jason Scott	Consultant	St Thomas' Hospital, Surbiton



Seosoon Seah  
John Sedgwick  
Hugh Seeley  
Chris Seifert  
Ellis Simon  
David Simpson  
Mark Sinden  
Ravi Singh-Verma  
Rishie Sinha  
Ian Smith  
Neil Soni  
Stewart Southey  
Manfred Staber  
Catherine Stack  
Michele Stevens  
James Stradling  
Piotr Szawarski  
Vivien Thomas  
Martin Thomas  
Kyaw Tint  
Aasifa Tredray  
Christopher Trotter  
Maria Trujillo  
Jake Turner  
Ian Tweedie  
Alison Twigley  
Richard Vanner  
Tim Vorster  
Julie Wakeford  
Carl Waldmann  
Julian Wang  
Matthew Ward  
Elisa Warren  
John Waterland  
Malcolm Watters  
Glenn Wearne  
Evan Weeks  
Sarah White  
David Whittaker  
Robert Whitty  
Lucy Williams  
Piers Wilson  
Shelagh Winship  
Davina Wong  
Kathy Woods  
Gary Yarwood  
Robin Young

Consultant  
Consultant  
Other  
Consultant  
Consultant  
Consultant  
Consultant  
Consultant  
Ct 1-2  
Consultant  
Consultant  
Consultant  
Consultant  
Consultant  
Other  
Consultant  
Consultant  
Consultant  
Consultant  
Other  
Ct 1-2  
Consultant  
Consultant  
Consultant  
Consultant  
Consultant  
Consultant  
Consultant  
Consultant  
Consultant  
Consultant  
Consultant  
Consultant  
Consultant  
Consultant  
Ct 1-2  
Other  
Consultant  
Ass Specialist  
Consultant  
Consultant  
St 3-7  
Consultant  
Consultant  
Other

Ealing, London  
King's College Hospital, Bickley  
Retired, London  
Hampshire Hospitals NHS Foundation Trust  
Royal Infirmary Of Edinburgh, Edinburgh  
Medway Hospital  
Tunbridge Wells Hospital  
Medway Maritime Hospital, London  
Nottingham University Hospitals Nhs Trust  
University Hospital Of North Staffordshire  
Chelsea & Westminster, London  
  
Inverclyde Royal Hospital, Greenock  
King's College Hospital, London  
Hillingdon, High Wycombe  
Oxford University Hospitals  
Wexham Park Hospital, London  
Chelsea & Westminster (Retired)  
Epsom  
University Hospital Of North Tees, Northallerton  
St George's NHS Healthcare, London  
Aberdeen Royal Infirmary  
Hospiten, Santa Cruz De Tenerife  
Royal Derby Hospital  
The Walton Centre NHS Ft Liverpool  
Luton And Dunstable NHS Trust,  
Gloucestershire Hospitals, Cheltenham  
Queen Victoria Hospital, East Grinstead  
Great Ormond Street Hospital, London  
Royal Berkshire Hospital, Reading  
Edinburgh  
Musgrove Park Hospital, Taunton  
Leeds Teaching Hospitals Nhs Trust  
Hull And East Yorkshire Hospital Trust  
The Great Western Hospital, Swindon  
Queen Victoria Hospital, Uckfield  
Addenbrooke's Hospital  
Royal Liverpool University Hospital  
St Faith Clinic, Lingfield  
Dublin  
Great Western Hospital, Swindon  
North Hampshire Hospital  
Perth Royal Infirmary  
Guys And St Thomas, London  
Aneurin Bevan Healthcare Trust, Cardiff  
Princess Elizabeth Hospital, Guernsey  
Addenbrooke's Hospital, Cambridge

## 25th Anaesthesia, Critical Care and Pain Update

### Val d'Isere, 27-30 January 2014

## Speakers

A Absalom	Professor of Anesthesiology, University of Groningen
J Adeley	HM Coroner for Preston and West Lancashire
M Bellamy	Professor of Anaesthesia, President of Intensive Care Society
JP van Besouw	Cons Anaesthetist, President of the Royal College of Anaesthetists
R Bingham	Consultant Anaesthetist, GOS, President of the APA
P Brooks	Consultant Paediatric Anaesthetist, Chelsea & Westminster
G Danjoux	Professor of Anaesthesia, South Tees NHS Foundation Trust
A Dewhurst	Consultant Anaesthetist, St George's Hospital
C Dewhurst	Head of Legal Department, Medical Defense Union
M Dunstan	Consultant Anaesthetist, Whittington NHS Trust Hospital
M Edsell	Consultant Anaesthetist, St George's Hospital
K Fong	Consultant Anaesthetist, UCL, Wellcome Trust Foundation Fellow
M Foxton	Consultant Hepatologist, King's College Hospital
J Griffin	Consultant Haematologist, Frenchay Hospital, Bristol
S Harridge	Professor of Human and Applied Physiology, King's College
W Harrop-Griffiths	Consultant Anaesthetist, St Mary's Hospital, President AAGBI
R Howard	Consultant in Anaesthesia and Pain, Great Ormond Street
A Kennedy	Consultant Neurologist, Chelsea & Westminster Hospital
A Krol	Consultant in Anaesthesia and Pain, St George's Hospital
A Lawson	Hon Senior Lecturer in Medical Ethics, Imperial College
R Marks	Consultant Anaesthetist, The Royal Free Hospital
M Martin	Financial Advisor, Director, Cavendish Medical
K Mason	Associate Professor, Children's Hospital & Harvard Medical School
B Maxwell	Consultant Anaesthetist, Great Western Hospital, Swindon
A McCrirrick	Consultant Anaesthetist, Gloucester General Hospital
D Nott	Consultant Surgeon, C&W Hospital and Medecins Sans Frontiere
E O'Sullivan	Cons Anaesthetist, President of College of Anaesthetists of Ireland
J Pandit	Professor of Anaesthesia, St John's College, Oxford
P Razis	Consultant Neuro-Anaesthetist, St George's Hospital, London
F Sage	Consultant Anaesthetist, East Surrey Hospital, Redhill
F Schroeder	Consultant Anaesthetist, St George's Hospital
S Sharma	Professor of Cardiology, St George's Hospital Medical School
S Singh	Consultant Respiratory Physician, Chelsea & Westminster Hospital
R Sneyd	Prof of Anaesthesia, Dean, Derriford School of Medicine, Plymouth
M Thomas	Professor of Surgery, The Royal Marsden Hospital
A Tredray	Consultant Anaesthetist, St George's Hospital, London
S Venables	Mountaineer, Mount Everest Explorer, Writer



# The Royal College of Anaesthetists

Educating, Training and Setting Standards in Anaesthesia,  
Critical Care and Pain Medicine

Chief Executive  
Kevin Storey

Churchill House  
35 Red Lion Square  
London WC1R 4SG

tel: 020 7092 1500

fax: 020 7092 1730

email: [info@rcoa.ac.uk](mailto:info@rcoa.ac.uk)

web: [www.rcoa.ac.uk](http://www.rcoa.ac.uk)

14 January 2014

Dear Dr. Liban,

**Re: RCoA Approval of CPD Event**

I am pleased to confirm that the following event has been approved for CPD purposes:

**Event title: 25th Anaesthesia, Critical Care and Pain Update**

**Organisation: DoctorsUpdates**

**Date of event: 27 - 30 January 2014**

**RCoA credits awarded: 15**

Delegates may claim a maximum of **15 CPD credits** for attending the event. These credits should be claimed as External CPD. Events are scored on the basis of one credit per hour of educational content and are capped at five credits per day (excluding coffee breaks, lunches, etc).

**Please note that individual participants may only claim the number of hours that they attend.**

The College requests that all event providers must provide a Certificate of Attendance to delegates (at least a letter on headed paper) and maintain an attendance register. The register should be retained for five years so that if necessary, verifications can be made.

CPD activities meeting the College's approval criteria will be able to use the RCoA's Revalidation logo, which is a registered UK trademark, in their supporting promotional material and on their programme and attendance certificates. Use of the logo is strictly limited to use in documentation relating to named events and activities that have received approval. To obtain a copy of the logo, please contact the CPD Department on [cpd@rcoa.ac.uk](mailto:cpd@rcoa.ac.uk)

Unless you have requested otherwise, your event will be featured in the College CPD Online System and included in the spreadsheet of approved national events on the College website.

We hope the event proves to be a success.

Yours sincerely,

**Chris Kennedy**  
CPD & Revalidation Co-ordinator

**The RCoA: Advancing Patient Care and Promoting Safety**

Patron: HRH The Princess Royal

REGISTERED CHARITY NO: 1013887 VAT REGISTRATION NO: GB 927 2364 18 REGISTERED CHARITY IN SCOTLAND NO: SC037737



# Unsafe surgery is a global health crisis.



You're up to a thousand times more likely to die or experience complications from an operation in a low-resource country than in a high-resource one.

Surgery should be life-saving, not life-threatening.

Visit [www.lifebox.org](http://www.lifebox.org) or @saferurgery to find out more.



Registered as a charity in England & Wales (1143018) Registered as a company limited by guarantee (7612518)

**In just over 2 years UK based charity Syria Relief has spent £1,500,000 on medical aid inside Syria's borders.**

Syria Relief supports field hospitals, mobile health clinics and primary health centres across Syria, providing a much needed medical service to civilians caught up in the horrific conflict, even in hard to reach warzones.

Syria Relief also supports prosthetic limb centres, trauma clinics, blood banks and immunisation programmes.

With Syria's medical infrastructure destroyed, only donations from the public can help Syria Relief keep these essential services operational.

Please help.

Donate at [www.syriarelief.org.uk](http://www.syriarelief.org.uk) or call 0161 860 0163



Registered UK charity no. 1143797

This shocking photograph shows the x-ray of a full-term foetus, shot in the head by a sniper whilst still in the womb. The photo was taken in a Syria Relief funded hospital in Aleppo.

Photo © Syria Relief 2013





Happy 25th Anniversary Doctors' Updates  
from YSE, the Val d'Isère specialist.  
Twenty-one chalets, great food  
and easy Sunday travel.

[www.yseski.co.uk](http://www.yseski.co.uk)  
01935 816550

A skier in a bright blue jacket and yellow pants is captured mid-jump against a snowy mountain background. The skier is wearing a silver helmet and goggles, and their skis are spread wide.

**ellisbrigham**  
**MOUNTAIN**  
**SPORTS**

Congratulations to  
**Doctors' Updates**  
on their  
25th Anniversary

**26 specialist UK shops**  
**[www.ellis-brigham.com](http://www.ellis-brigham.com)**  
**[www.snowboard-asylum.com](http://www.snowboard-asylum.com)**

follow us on

A man in a blue and white checkered shirt is seated at a grand piano, playing. The piano is black with gold-colored keys and is set against a wooden wall. A reflection of the man is visible in the piano's mirror.

**A night to remember**  
Mo Reez et al  
(aka Dr Maurice Dunstan)

**La Savoyarde Hotel Bar**  
Wednesday 29 January from 10pm

## Notes



## Notes





# Cavendish Medical congratulates Doctorsupdates on your 25th anniversary

Cavendish Medical provides exceptional financial  
planning for senior medical professionals

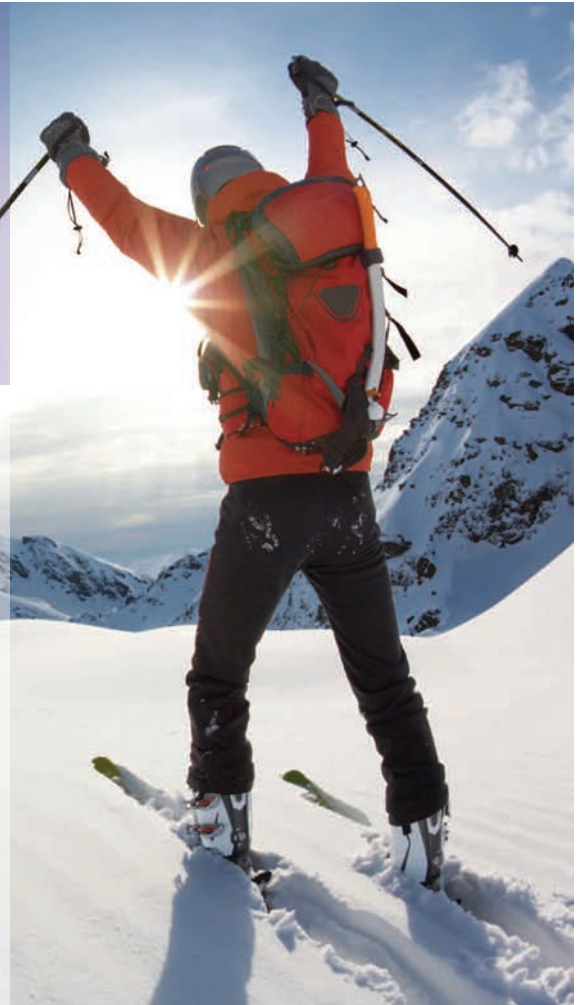
Widely respected as the discerning choice for doctors at the top of their game, Cavendish Medical helps over 450 high-achieving medical consultants and their families. We could help you navigate through complex personal and NHS retirement issues in order to secure your long-term wealth.

For specialist advice and first rate service, contact Hugh Davies at the conference on +44 7900 693 649 or on your return on 020 7636 7006.



## CAVENDISH MEDICAL

020 7636 7006 [www.cavendishmedical.com](http://www.cavendishmedical.com)



# HAPPY 25TH ANNIVERSARY TO DOCTORSUPDATES!

Oxygène Ski & Snowboard School  
[valdisere@oxygene-ski.com](mailto:valdisere@oxygene-ski.com)  
+33 (0)4 79 41 99 58



# The St George's Cup

"The Race is not for the swift, nor the battle for the strong,  
but the one who endure to the end"

## Slalom Race

### Roll of Honour

1990	Mike Inglis – Epsom District Hospital
1991	Plat Razis – St George's Hospital, London
1992	David Chisholm – St George's Hospital, London
1993	David Enderby – Royal National Throat, Nose & Ear Hospital
1994	Brian Clarkson – Royal Devon & Exeter
1995	Philippe Duvaldestin – Henri Mondor, Paris
1996	Nuala Dunne – University Hospital, Cardiff
1997	Ian Calder - National Hospital, Queen Square, London
1998	Tony Laycock – North Devon Hospital, Barnstaple
1999	Fiona Dodd – Wythenshawe Hospital, Manchester
2000	Richard Marks – Royal Free Hospital, London
2001	Mark Jackson- Great Western, Swindon
2002	Mike Mowbray – Kings Mill
2003	Peter Cole – Leeds General Infirmary
2004	Duncan Farquar-Thompson – Dorset County
2005	Alison Brake – City Hospital, Birmingham
2006	Chris Tolhurst Cleaver – Wythenshawe, Manchester
2007	Barry Lambert – Chelsea and Westminster, London
2008	Paul Williams – University Hospital Lewisham
2009	Richard Cole – Salisbury District Hospital
2010	David Niblett – Bedford Hospital
2011	Vladislav Panek – Warwick Hospital
2012	Richard Barnes – Royal Berkshire, Reading
2013	Benjamin Thorpe – Queen Victoria, East Grinstead



doctors  
updates





*Airtraq Avant*  
GUIDED INTUBATION

**Safer** Guided Video Intubations  
at **low cost** with no capital  
investment

Proven Technology. 1+ Million Intubations

Where and when you need it



### Optics

- ✓ Reusable 50 intubations
- ✓ Fully isolated from the patient



### Digital Recordable Camera

- ✓ **Wireless** image transmission
- ✓ **Record** and **playback** functions
- ✓ **Portable** with long battery life
- ✓ **Compatible** with all adult Airtraq models
- ✓ **Rotation** of screen and image available



### Docking Station

- ✓ Recharges battery
- ✓ Displays service life



[www.airtraq.com](http://www.airtraq.com)