



COMMERCE  
CITY  
HISTORICAL  
SOCIETY

**FROM TIME TO TIME  
LUNCHEON**  
Sunday May 7, 2017

**The Yellow Rose  
Event Center**



**COMMERCE  
CITY  
HISTORICAL  
SOCIETY**



# Master of Ceremony

MAYOR PRO TEM RENE'BULLOCK

# 2017 LUNCHEON COMMITTEE

- ESTHER HALL
- THELMA COLE
- DEBRA BULLOCK
  - PAM MEIER
  - JANET UNION
  - SHEILA HARRIS





# VOLUNTEER OF THE YEAR

- ▣ Harley Hall
- ▣ Janet Union

# Harley & Janet



# Jean Klein Angel Awards

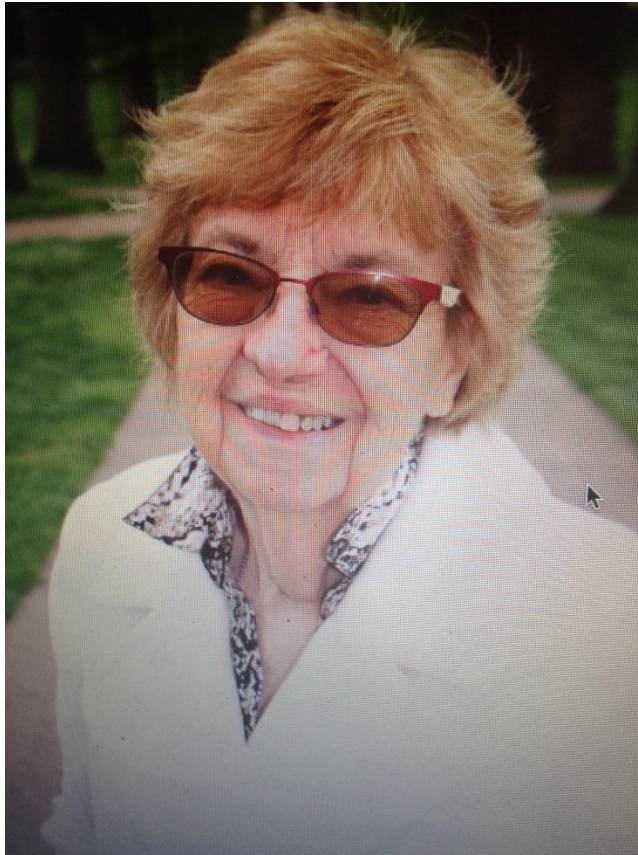






# Ms. Loretta Garcia





# Loretta and her Children

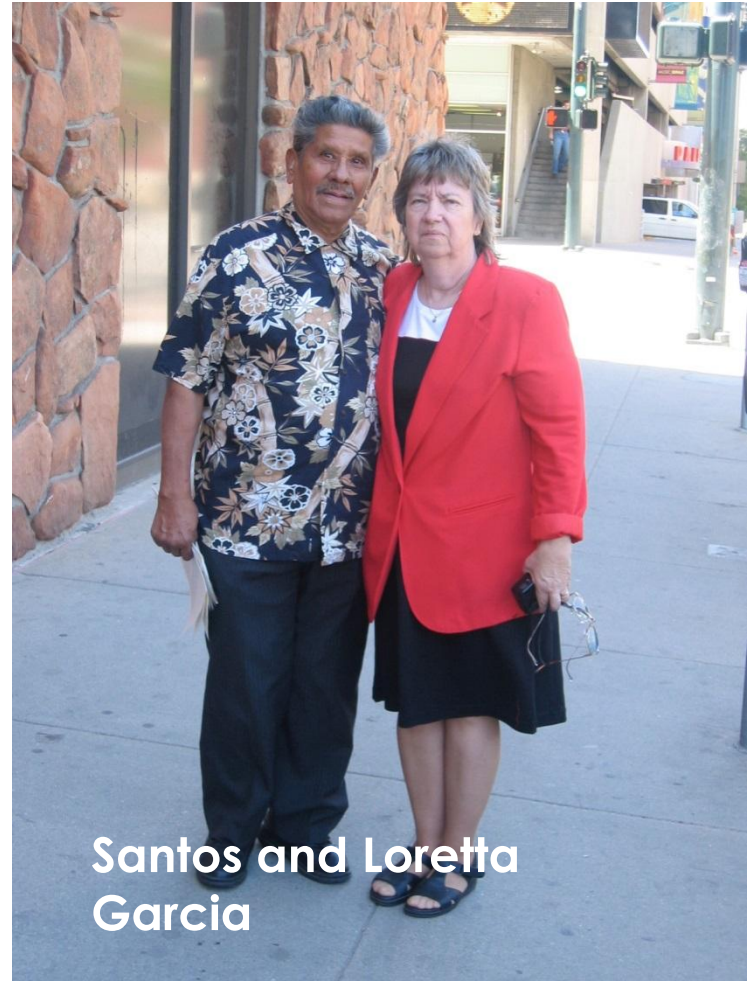


# Family picture



# Family Christmas





Santos and Loretta  
Garcia

# Loretta and her daughter Pam



# Adams County Food Bank





# Rosemary food bank location



# Rosemary food bank location



# Rosemary Food Bank Location



# Principe de Paz food bank location



# Our Saviour Lutheran Church food bank location



# Our Saviour Lutheran Church food bank location



# Food Bank at Our Saviour



# Our Saviour Lutheran Church food bank location





# Channel 7 Everyday Hero award



# Channel 7 Everyday Hero award with Larry Quintana



# Loretta and Alsup Principal Michael Abdale



2015



# Mr. Dale Mingilton





# Adams 14 Foundation Gala



# Boys and Girls Club Scholarship 2015







# Family picture







- Leadership Commerce City Day at the Capital

# Winterfest Commerce City 2016



# Mr. Russ Watterson, Sr.



# Russ Watterson









# Columbine Ranches-1978-1980





# 1986/87

- Negotiations begin with South Adams County Water and Sanitation for water and sewer service to the Northern Range.
- Draft Utility Agreement first circulated on February 6, 1987.



# July 6, 1987

- ▣ LANDS ANNEXED TO COMMERCE CITY
- ▣ Boundaries include
  - ▣ 120<sup>th</sup> North
  - ▣ 112<sup>th</sup> South
  - ▣ Chambers West
  - ▣ Buckley Road East



# LAND BECOMES VILLAGES AT BUFFALO RUN

- ▣ LAND ANNEXATION
- ▣ The Villages at Buffalo Run East
- ▣ The Villages at Buffalo Run West

# The Real Beginning of the Northern Range Development

- Begins after the Record of Decision
- Concerning the final disposition of the Rocky Mountain Arsenal
- Including the settlement with South Adams which provided the necessary funds for expansion of the district's infrastructure.



120<sup>th</sup> Avenue

Buckley Road

Chambers Road

112<sup>th</sup> Avenue

Columbine Ranches



# 1989

- ▣ NEGOTIATIONS FOR THE TOWER ROAD INTERCHANGE BEGIN
- ▣ AFTER 5 YEARS (APRIL 1994) THE AGREEMENT WAS SIGNED BY MAYOR DAVID BUSBY AND THE LAND OWNERS.
- ▣ BUILT IN 1995.

# Buffalo Run Golf Course

- ❑ Land donated on November 2, 1994.
- ❑ 110 Acres by Russ Waterson and Partner John Fair
- ❑ 90 Acres by Cal Fulenwider

# Buffalo Run Golf Course

**Finished in 1996**



**Opens-1997**







# The Villages at Buffalo Run East 118<sup>th</sup> Street and Chambers (west side)



2001



# Highlands at Buffalo Run East 118<sup>th</sup> Street and Chambers (east side)



**2002**



# The Fairways at Buffalo Run 120<sup>th</sup> and Mobile Street

**2003**





# Fairway Village 120<sup>th</sup> and Laredo Street

**2003**





# The Greens at Buffalo Run 112<sup>th</sup> and Chambers Townhomes and Patio Homes

**2003**





# Stampede Park

## 11755 Fairplay-2003

- ▣ Land donated by Russ Watterson



# The Villages East Park East 114<sup>th</sup> and Chambers 2016





# FUTURE BUILDING

- ▣ Estates at Buffalo Run
- ▣ The Hills at Buffalo Run
- ▣ Buckley Parkway
- ▣ High Plains Parkway
- ▣ 7-11 at 120<sup>th</sup> and Chambers

# The Estates at Buffalo Run-2017



# The Hills at Buffalo Run 120<sup>th</sup> and Buckley-2017



Current Development

# Future Buckley Road Parkway- and High Plains Parkway

2017



# New 7-11

- ▣ Located at 120<sup>th</sup> and Chambers road.
- ▣ East side of Chambers Road

# Buffalo Ridge Metropolitan District

120<sup>th</sup> north

Chamber  
Road West

Buckley Road  
East

112<sup>th</sup> Avenue  
South



# BUSINESS AWARDS



# Ace Hardware





# Jerry Auer



# Jerry Auer



# Helen. Auer



# Mr. Jerry Auer - 1947





1986



# 1995 – Carole and Bob Woodbury







Tim and Tracey Zaleski  
new owners arriving July 2017



# Inside the store 2017



# Inside the store 2017



2017



2017



2017



2017



# Commerce City Ace Hardware







# Murray Farms



# Benton Potatoe Planting 1930



# Shucking Corn – 1930's



# Raking Alfalfa – 1930's



# Sugar Beet Loader 1939



Beet loader 1939

# Benton and Pickney Wheat Harvest 1940



# Kathryn & Farmhouse - 1940





# Twin calves 1941 & 1942



# Old Horse Barn 1942



# Pickney and Twin Harvey - 1942



# Family Home 1942



# Home - 1942



# Pickney and Wheat Combine -1942



# 1946 Farm House



# Benton in Potatoe Field





# Benton and Pickney Corn Field



# Harvesting Pioneer Test Plot 1980's



# Unloading corn into bin



# 1999 Farm Homestead



# 2000 Homestead



# Farm buildings 2013



# Silo & milk barn 1942

## Silo & Office 2013



# 2013 flood





# Corn Harvest 2014



# Double Rainbow June 2014



# No-Till Corn 2014



# 2016 Homestead



# Irrigating 10 - 2016



# Ditching and Applying Fertilizer 2016



# Glen – Corn Harvest 2016



# Lyle – Corn Harvest 2016





# Farm – Spring 2016



# Justin - Grandson



# Raspberry bushes and farm buildings



# Farm blanketed in snow



# Lyle – Sled time



2017



# 2017 view from the south



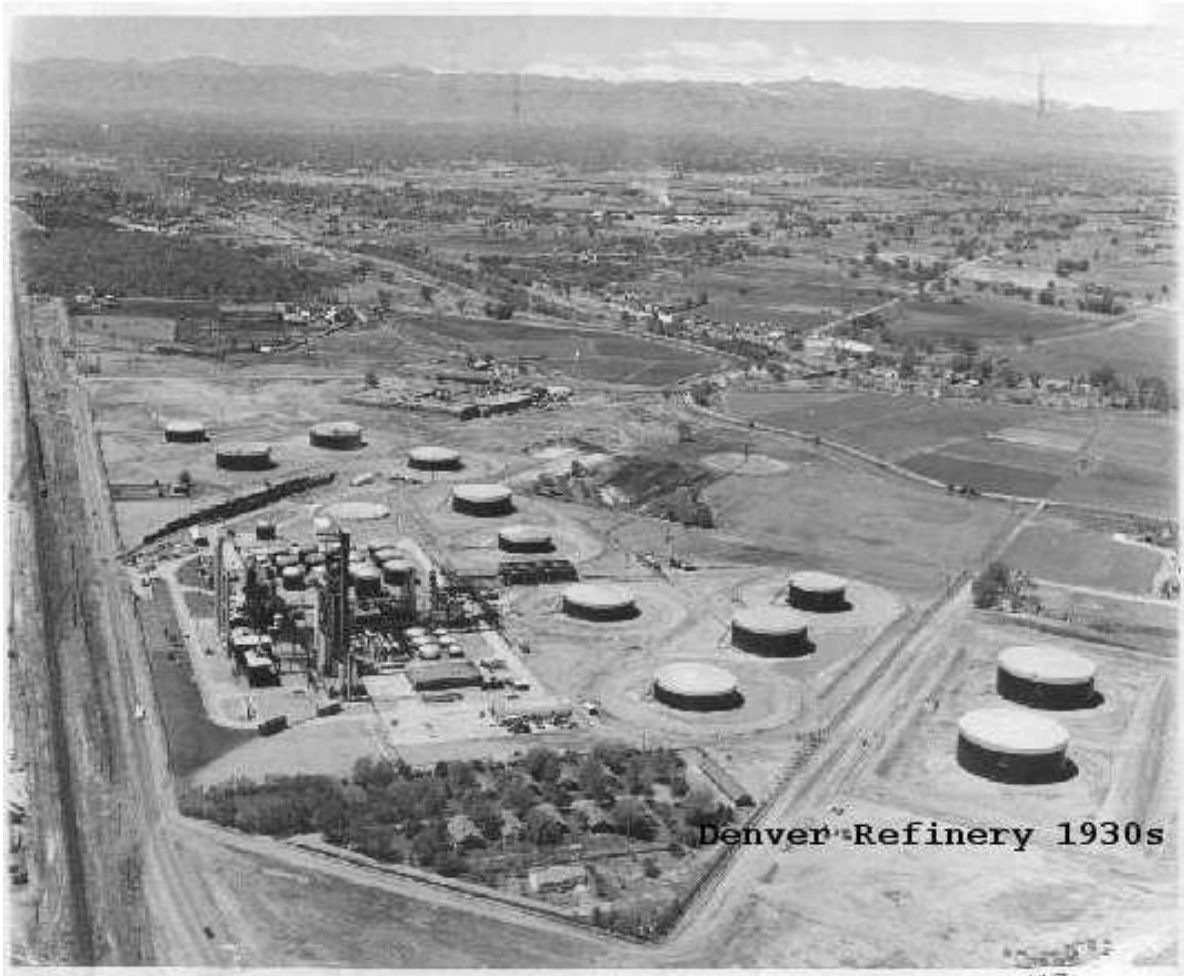
# 2017- view from the north





# Suncor Energy





Denver Refinery 1930s















□ THANK YOU...

□ BE SAFE...

□ SEE YOU NEXT YEAR...

