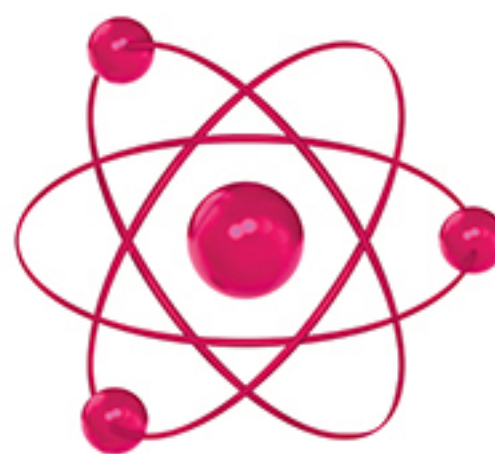


FUSION

GEL BATTERIES



Tubular Gel OPzV Series



Solar - Cyclic - Deep Cycle - Stand By

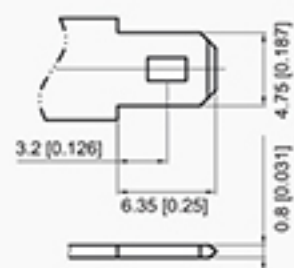
- **Ultra High Performance Tubular VRLA Gel - Non-spillable**
- **20 Years Design Life**
- **Tubular Die Cast Plate Technology** - Offering high reliability, stable performance and longer life
- **Engineered with True Gel Technology**
- **Superior Cyclic Life - Up to 5,875 cycles at 30% Depth of Discharge**
- **Excellent Deep Discharge Recovery & Cyclability**
- **Wide Operating Temperature Range -20°C to 55°C**
- **No Acid Stratification** – Meaning no equalizing charge necessary
- **Deep Discharge Protected** - A load can be connected to the battery for up to 4 weeks
- **Extremely Low Rate of Self-Discharge** – Less than 50% of rated capacity in 2 years at 20°C ambient temp
- **Minimal Gassing** - Due to antimony-free alloy and internal oxygen recombination
- **Good Overcharge Ability**
- **Better Safety Performance & Reliability**
- **Can be used Vertically or Horizontally** - With no loss of performance or concern of electrolyte leakage
- **Easy to Move, Handle & Install** - Using cable connectors with insulated terminal covers
- **Virtually Eliminates Maintenance & Servicing Costs**
- **Better Temperature Resistance Performance**
- **No Internal Short Circuits Possible** - Due to the gel structure
- **Flame Retardant ABS Plastic & Flame Arrestors** - To prevent sparks entering the battery for added safety
- **Superior Design & Quality** - Manufactured to Quality Assurance Standard ISO 9001
- **5 Years Full Replacement Warranty**

Fusion Gel Batteries Terminal Options

T1 Terminal

Unit: mm [inches]

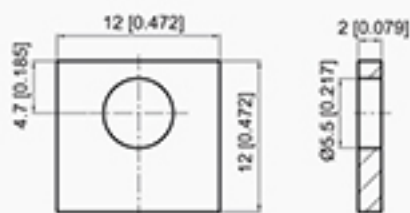
FASTON TYPE (Copper) quick disconnect tabs:
Silver coating for better conductivity



T3 Terminal

Unit: mm [inches]

Brass Coated with Tin
Terminal Torque 3.9 - 5.4 N m



T5 Terminal

Unit: mm [inches]

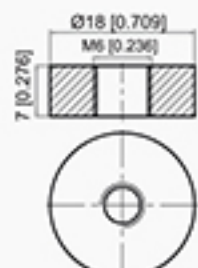
Lead
Terminal Torque 3.9 - 5.4 N m



T7 Terminal

Unit: mm [inches]

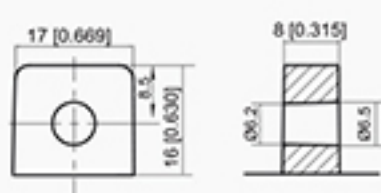
Brass Coated with Tin, Threaded Insert 6mm STUD
Terminal Torque 3.9 - 5.4 N m



T10 Terminal

Unit: mm [inches]

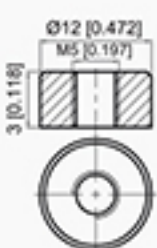
Lead
Terminal Torque 3.9 - 5.4 N m



T12 Terminal

Unit: mm [inches]

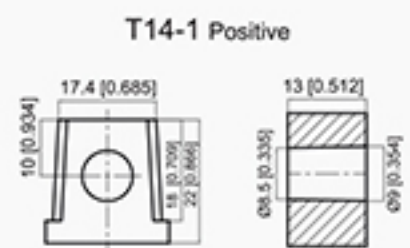
Brass Coated with Tin, Threaded Insert 5mm STUD
Terminal Torque 2.0 - 3.0 N m



T14 Terminal

Unit: mm [inches]

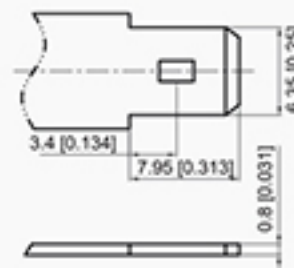
Lead
Terminal Torque 11 - 14.7 N m



T2 Terminal

Unit: mm [inches]

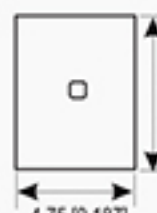
FASTON TYPE (Copper) quick disconnect tabs:
Silver coating for better conductivity



T4 Terminal

Unit: mm [inches]

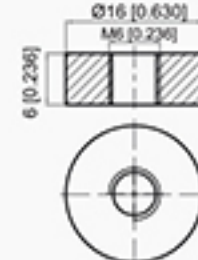
Brass Coated with Tin
Terminal Torque 3.9 - 5.4 N m



T6 Terminal

Unit: mm [inches]

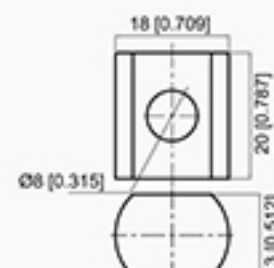
Brass Coated with Tin, Threaded Insert 6mm STUD
Terminal Torque 3.9 - 5.4 N m



T9 Terminal

Unit: mm [inches]

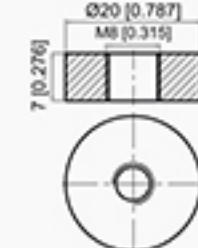
Lead
Terminal Torque 11 - 14.7 N m



T11 Terminal

Unit: mm [inches]

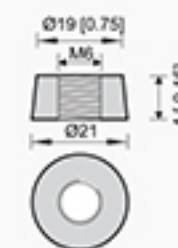
Brass Coated with Tin, Threaded Insert 8mm STUD
Terminal Torque 11 - 14.7 N m



T13 Terminal

Unit: mm [inches]

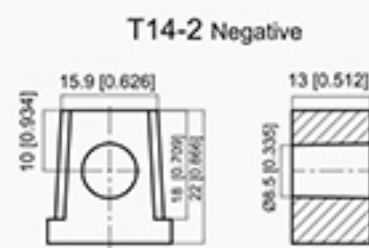
Brass Coated with Tin, Threaded Insert 6mm STUD
Terminal Torque 3.9 - 5.4 N m



T14 Terminal

Unit: mm [inches]

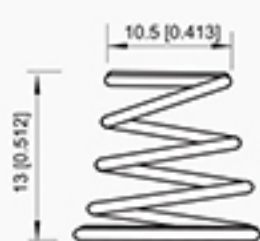
Lead
Terminal Torque 11 - 14.7 N m



Spring Terminal

Unit: mm [inches]

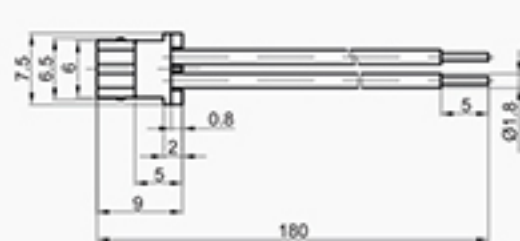
Spring Steel
Fully Collapsible



Connector

Unit: mm [inches]

Toy Battery Connector
H-Connector



Intertek

ETL SEMKO



QUALITY ASSURANCE
ISO 9001