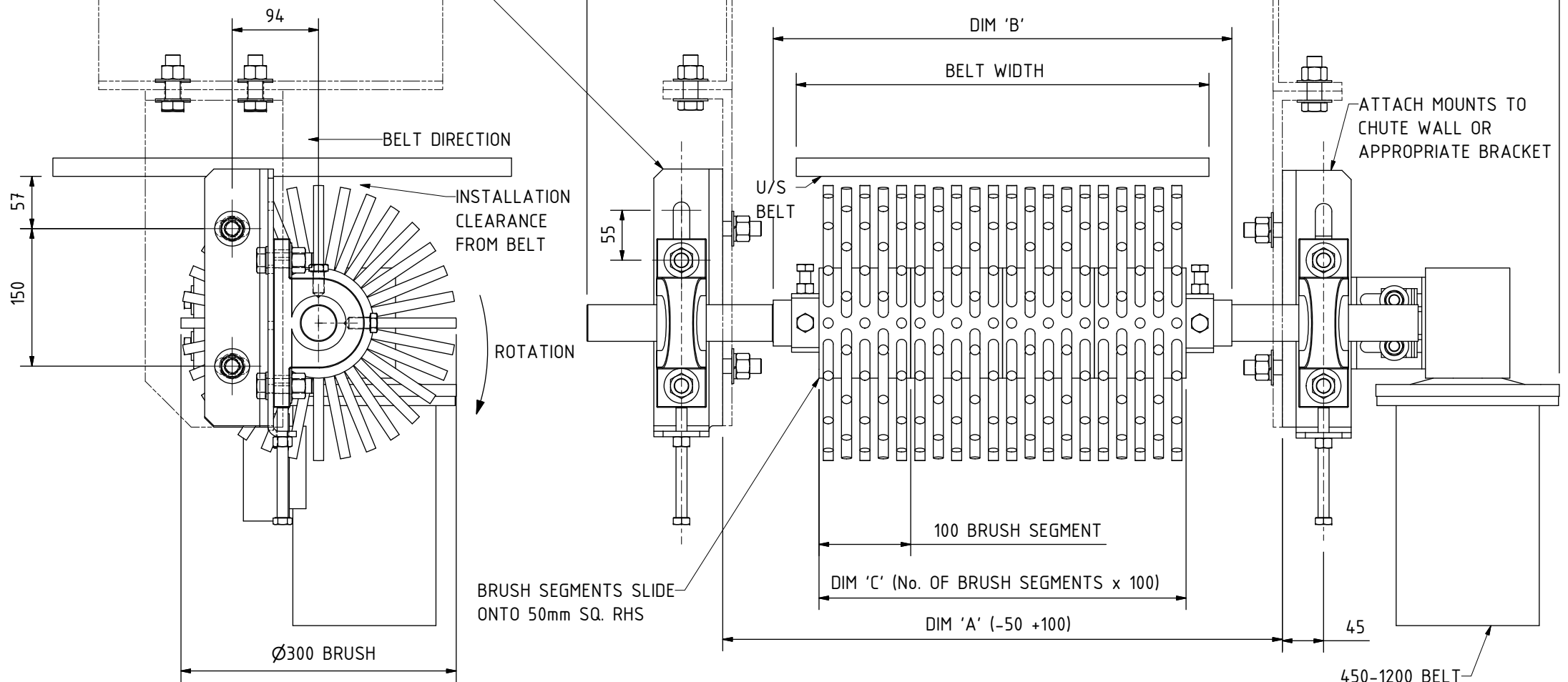


BRUSH CLEANER IS SHOWN IN RETRACTED POSITION FOR INSTALLATION. ADJUSTMENT ALLOWS FOR 52mm TRAVEL



450-1200 BELT  
0.75KW MOTOR 4 POLE IP65  
5:1 REDUCTION - 280 RPM OUTPUT

1350-1800 BELT  
1.5KW MOTOR 2 POLE IP65  
10:1 REDUCTION - 280 RPM OUTPUT

SUFFIX NOTES  
s = S.S. (STAINLESS STEEL) MOUNT BRACKETS

BELT	DIM 'A'	DIM 'B'	DIM 'C'	DIM 'D'	PART No.	BELT	DIM 'A'	DIM 'B'	DIM 'C'	DIM 'D'	PART No.
450	610	500	400	1060	25006045(s)	1200	1360	1250	1000	1810	25006120(s)
600	760	650	500	1210	25006060(s)	1350	1510	1400	1200	1960	25006135(s)
750	910	800	700	1360	25006075(s)	1500	1660	1550	1300	2110	25006150(s)
900	1060	950	800	1510	25006090(s)	1600	1760	1650	1400	2210	25006160(s)
1050	1210	1100	900	1660	25006105(s)	1800	1960	1850	1600	2410	25006180(s)

Rev	Revision Description	Ref. Document	Drawn	Chkd	Appd	Date	Drawing No.	Reference Drawings
H	IP65 MOTOR NOTE ADDED	EDCR187	GG	SD	CW	23/1/09		
G	DIM 'D' LENGTHS MODIFIED		SD	GG	TT	6/10/06		
F	ADDED DIM 94 - HOLES CRS TO BRUSH CTR		GC	SD	TT	11/5/06		
E	ADDED 1350-1800 BELTS		GC	SD	TT	6/3/06		
D	50mm RHS NOTE ADDED		SD	GC	TT	8/2/05		
C	NEW DESIGN, REDRAWN	ARF0962	G.C.	S.D.	T.T.	3/12/02		
B	1050 & 1200 ADDED		S.D.	R.O.	T.T.	8/01/02		
A	900 BW ADDED		S.D.	R.O.	T.T.	7/7/00	F0258	EXPLODED PARTS



Client:  
Location:

Title: **ESS BRUSH CLEANER INSTALLATION**

Drawn: G.COX Scale: NTS (A3) Drg.No.: F0172 Revision: H  
Chkd: S.D. Appd: T.T. Date: 2/12/2002