

PRIMARY CLEANERS

DT PRIMARY



PART No. 16 xxx xxx

XHD PRIMARY



SUITABLE FOR BELT WIDTH: 450-2400mm
PART No. 35 xxx xxx

TM PRIMARY



SUITABLE FOR BELT WIDTH: 450-2400mm
PART No. 20 xxx xxx

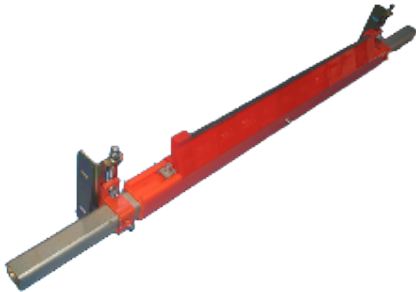
COMPACT PLUS PRIMARY



SUITABLE FOR BELT WIDTH: 450-2400mm
PART No. 31 xxx xxx

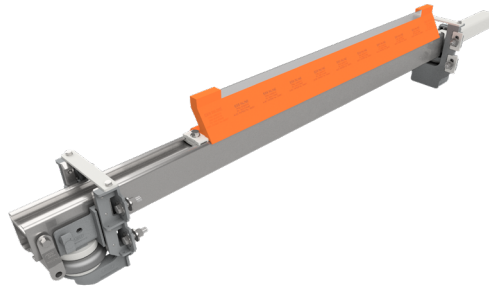
SECONDARY CLEANERS

INLINE STANDARD SECONDARY CLEANER



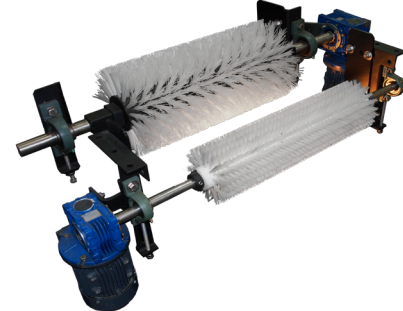
PART No. 39 8xx xxx

INLINE PREMIUM SECONDARY CLEANER



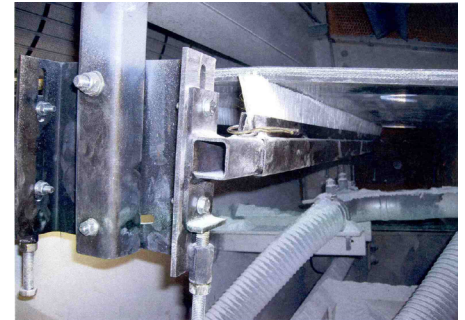
PART No. 39 7xx xxx

ROTARY BRUSH SECONDARY CLEANER



SUITABLE FOR BELT WIDTH: 450-2400mm
PART No. 25 xxx xxx

STATIC BRUSH SECONDARY CLEANER



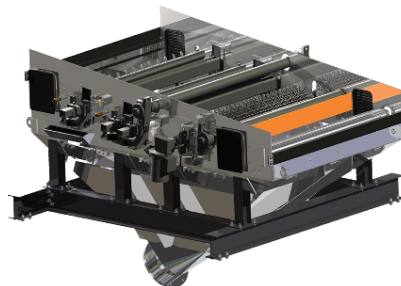
SUITABLE FOR BELT WIDTH: 450-2400mm
PART No. 25 xxx xxx

DT TORSION ARM SECONDARY CLEANER



PART No. 18 xxx xxx

WASH STATION



PART No. 16 xxx xxx

RETURN BELT CLEANERS

RBC



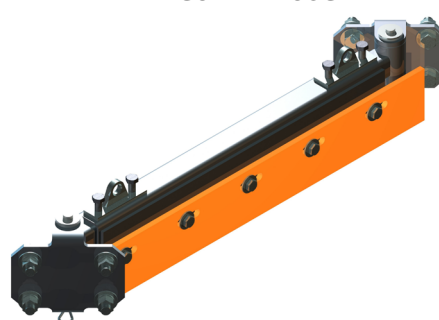
SUITABLE FOR BELT WIDTH: 450-2400mm
PART No. 61 120 xxx

HD RBC



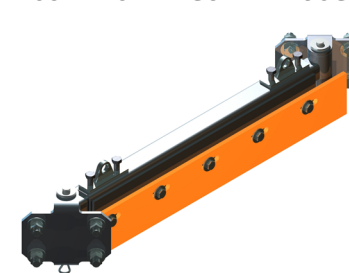
SUITABLE FOR BELT WIDTH: 450-2400mm
PART No. 61 130 xxx

DIAGONAL PLOUGH



SUITABLE FOR BELT WIDTH: 450-2400mm
PART No. 61 102 xxx

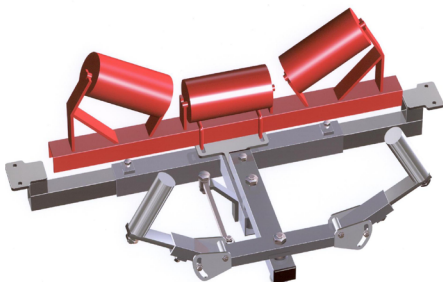
COMPACT DIAGONAL PLOUGH



SUITABLE FOR BELT WIDTH: 450-2400mm
PART No. 61 101 xxx

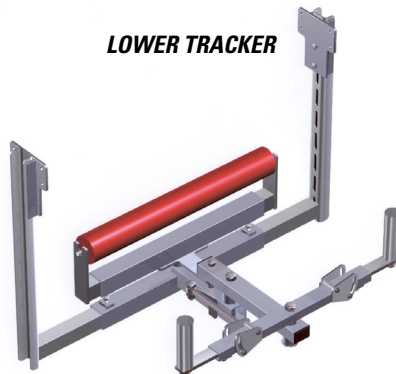
BELT TRAINING DEVICES

UPPER TRACKER



SUITABLE FOR BELT WIDTH: 450-2400mm
PART No. 79 06 xxxx U x

LOWER TRACKER



SUITABLE FOR BELT WIDTH: 450-2400mm
PART No. 79 06 xxxx L x

HD UPPER TRACKER



SUITABLE FOR BELT WIDTH: 450-2400mm
PART No. 79 05 xxxx L x

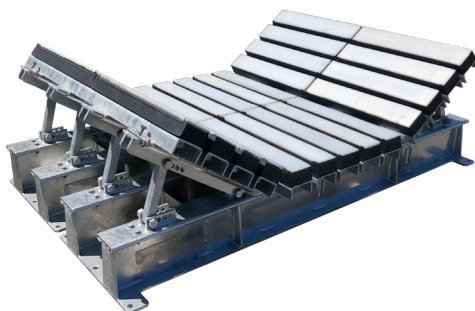
HD LOWER TRACKER



SUITABLE FOR BELT WIDTH: 450-2400mm
PART No. 79 05 xxxx L x

IMPACT BEDS

GAB IMPACT CRADLE



SUITABLE FOR BELT WIDTH: 450-2400mm
PART No. 47 xxx xxx

COMBI CRADLE



SUITABLE FOR BELT WIDTH: 450-2400mm
PART No. 47 xxx xxx

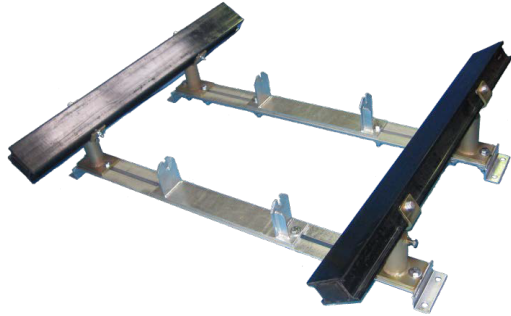
ROLLER CRADLE



SUITABLE FOR BELT WIDTH: 450-2400mm
PART No. 47 053 xxx

SUPPORT SYSTEMS

GS SEALING SUPPORT SYSTEM



SUITABLE FOR BELT WIDTH: 600-2400mm
PART No. 45 xxx xxx

QUICK CHANGE IDLER FRAMES LD



SUITABLE FOR BELT WIDTH: 450-2400mm
PART No. 47 20x xxx

QUICK CHANGE IDLER FRAMES MD



SUITABLE FOR BELT WIDTH: 450-2400mm
PART No. 47 20x xxx

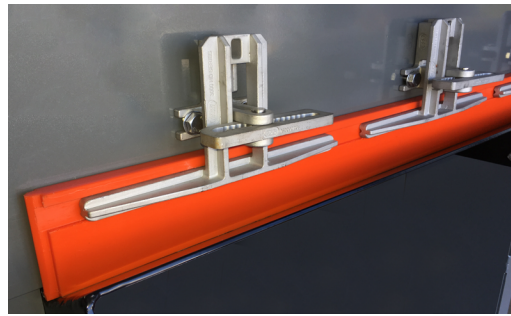
QUICK CHANGE IDLER FRAMES HD



SUITABLE FOR BELT WIDTH: 450-2400mm
PART No. 47 22x xxx

SKIRTING SYSTEMS

ESS 3000 SERIES SKIRTING SYSTEM



PART No. 050250 xxx

TM SKIRT BOARD



PART No. 0500100x

ESS 2000 SKIRTING SYSTEM



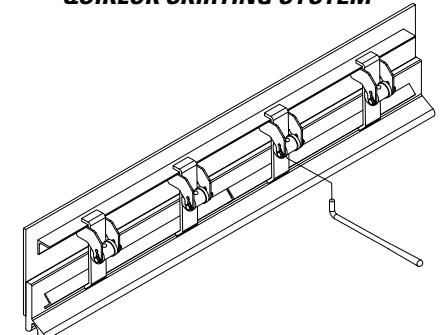
PART No. 0500500xx

ESS 2000 LAY-IN SKIRTING SYSTEM



PART No. 05005005/6xx

QUIKLOK SKIRTING SYSTEM



PART No. 05004001 (xx)

SPRAY SYSTEMS

DN25 SPRAY BAR



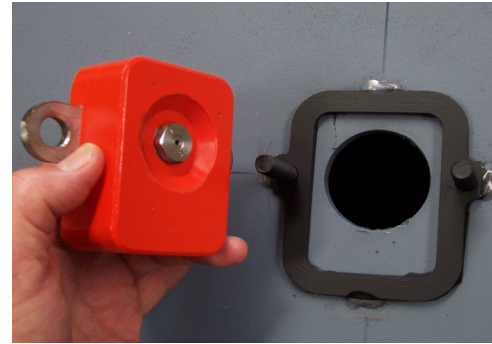
PART No. 73025 xxx S

HD RBC



PART No. 73025 xxx S

QUICKFIT DUST SUPPRESSION NOZZLE



PART No. 783 000 10

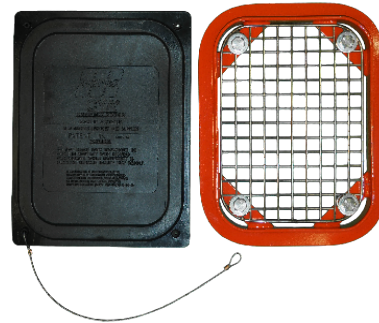
GUARDING

EZI-GUARD



PART No. 24 900 x xx (xx)

SAFETY ACCESS DOOR



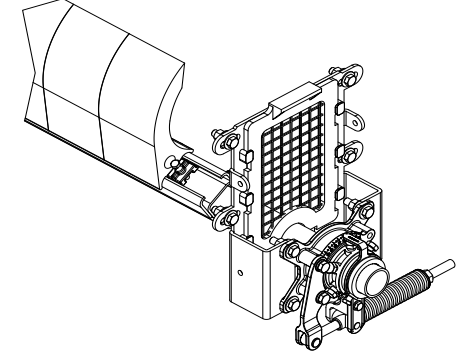
PART No. 2301 xxxx

LOW PROFILE ACCESS DOORS



PART No. 2352 xxxx (x)

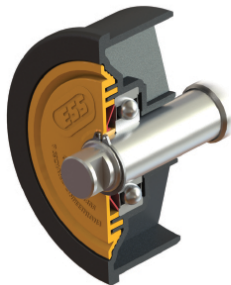
COMBI-SAFE ACCESS DOOR



PART No. 23600020

ESS ROLLERS

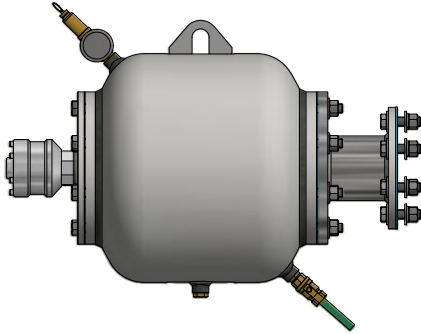
ESS ROLLER RANGE



PART No. 44xxxxxx

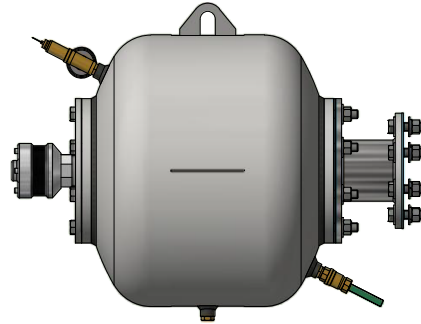
ESS AIR CANNONS Internal Arrangement Valves

ESS AIR CANNON - i4" VALVE



PART No. 5051xxx4

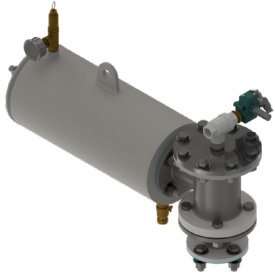
ESS AIR CANNON - i6" VALVE



PART No. 5051xxx6

ESS AIR CANNONS External Arrangement Valves

ESS AIR CANNON - e2" VALVE



PART No. 50500152 Single Ended
PART No. 50500153 Double Ended

ESS AIR CANNON - e4" VALVE



PART No. 5050xxx4 Single Ended
PART No. 5050xxx5 Double Ended

ESS UNIVERSAL XHV VALVES

ESS AIR CANNON - e4" UNIVERSAL XHV VALVE



PART No. 51504400

ESS AIR CANNON - e6" UNIVERSAL XHV VALVE



PART No. 51506400

ESS AIR CANNON - e6" VALVE /E



PART No. 5050xxx6 Single Ended
PART No. 5050xxx7 Double Ended

VISIT THE WEBSITE TO DOWNLOAD THE FULL PRODUCT CATALOGUE

ESS

ENGINEERING SERVICES & SUPPLIES PTY LTD

Ph: 1800 074 446 www.esseng.com.au