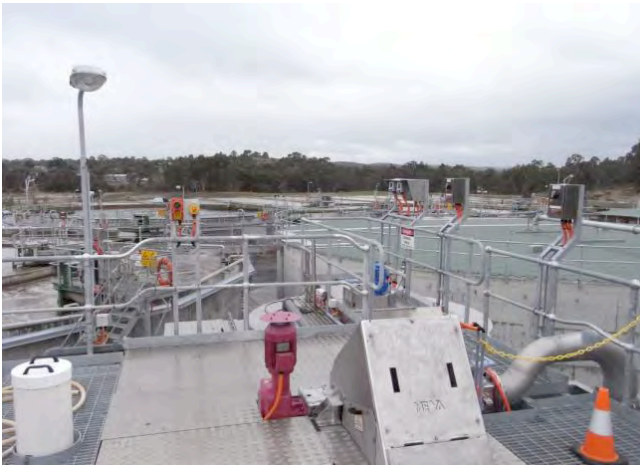


Castlemaine Water Reclamation Plant



Location: Castlemaine Victoria
Client: Belminco Coliban Water
Contract: Complete Electrical & Instrumentation Augmentation
Contract Value: A\$943,568.00
Duration: July 2010 to April 2011



The Castlemaine Wastewater Treatment Plant is a biological nutrient removal treatment plant using an activated sludge process. The plant is designed to receive an average dry weather flow of 5.5ML/d and a peak wet weather flow of 15.7 ML/d

Paul Cochrane Electrical scope of work covered the complete augmentation of all electrical and instrumentation at this brown field site.

Operation of the Waste Water Treatment Plant could not be disrupted during construction stage. Paul Cochrane Electrical has an excellent ongoing relationship with both the operator of the Plant Veolia Water and the Water Authority Coliban Water. Changeover from existing plant operational SCADA system to a new control system was completed without any disturbance or loss of productivity.

The project involved:

- ◆ All Materials procurement.
- ◆ Installation of all cable ladders and conduits.
- ◆ All mains and sub-mains installation.
- ◆ Installation of all cabling.
- ◆ All instrumentation.
- ◆ Installation of all control cubicles.
- ◆ Installation of all MCC's.
- ◆ All local control stations.
- ◆ Cut-in to existing plant control system.
- ◆ Existing Main – Switchboard modifications.
- ◆ All device net cabling and terminations.
- ◆ Start-up and system commissioning.
- ◆ Full inspection and Test Plans.