

For the Social Butterfly.
We've got it.



For the Wine Connoisseur.
We've got it.



For the Aspiring Resident.
We've got it.



For the View Admirer.
We've got it.



For the Outdoor Enthusiast.
We've got it.



Large Windows to Enjoy the *Glorious Views* of Georgian Bay



Stan Reljic

Broker, Century 21 Millennium Inc.
E stan@live4seasons.ca
C 1.705.888.5124

Sales & Discovery Centre

221 McLeese Drive, Kemble, ON
P 1.226.664.0064
TF 1.877.781.0149



Energy Star qualified home that reduces energy consumption and saves on utility bills.

Renderings and drawings are artist's concept only and may vary from the final product. Drawings may be the reverse of the final product.
All information on this handout is subject to change. E.&O.E. © November 2016.



PROVIDENCE

Detached Bungalow



Artist's concept.

For the Lifestyle Seeker... We've got it all.

ReidsHeritageHomes.com

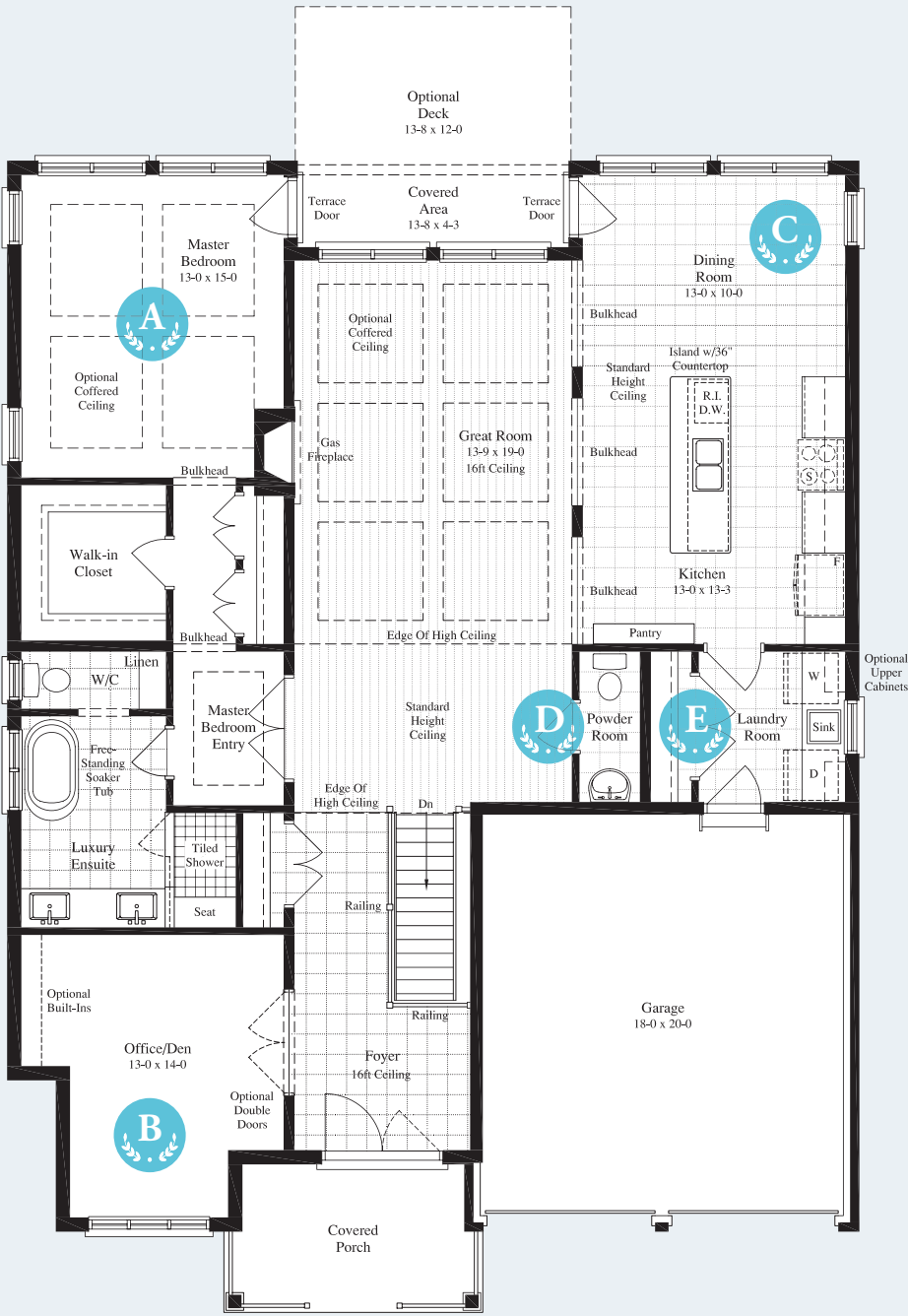


LiveCobbleBeach.com

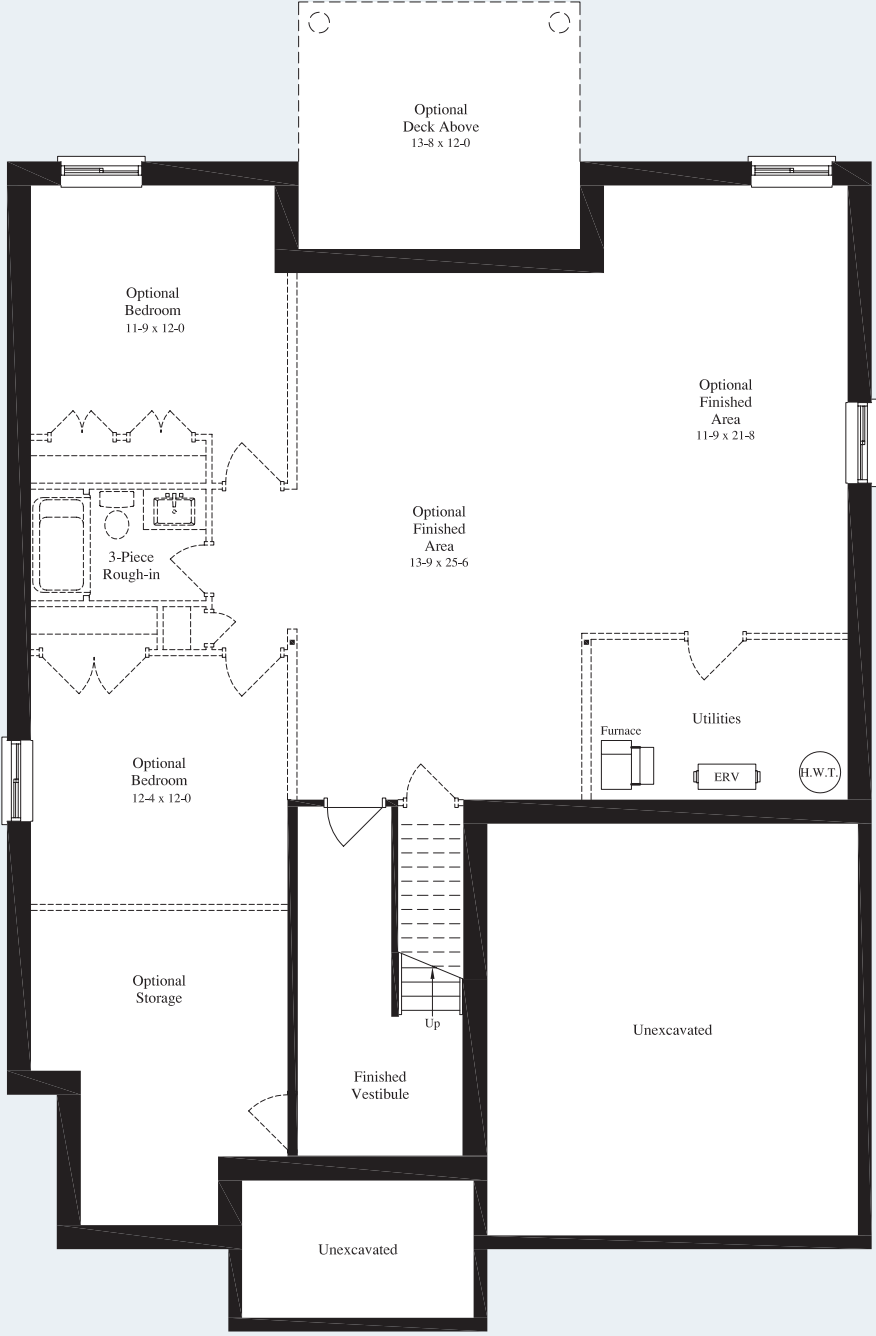
PROVIDENCE

BUNGALOW 1,897 SQ.FT. 1 BED + DEN (2 BED) 1.5 OR 2.5 BATH

*Includes 180 sq. ft. of finished basement vestibule



MAIN FLOOR



BASEMENT

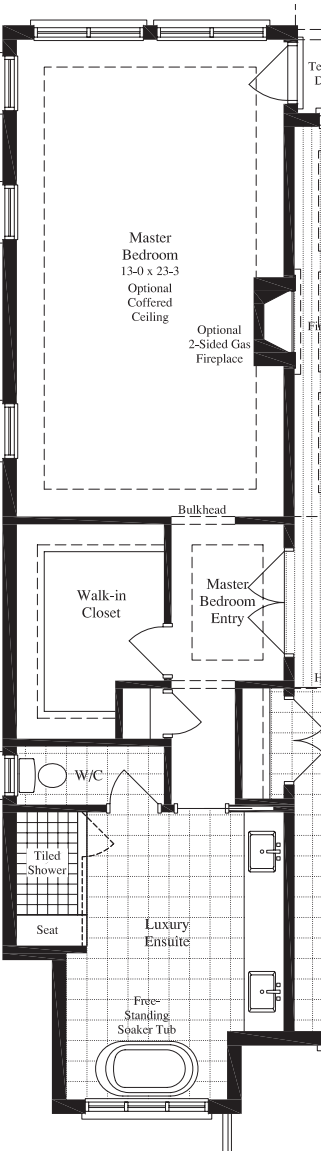
UPSCALE FEATURES

- Large windows and covered porches to enjoy the stunning Georgian Bay views
- Chef's kitchen with granite countertops, undermounted stainless steel sink, and large island with extended breakfast bar
- Granite countertops in all bathrooms
- Ceramic tiles in kitchen, bathrooms, laundry room and foyer
- Entertainer's open concept layout
- Private master suite with elegant double doors and expansive walk-in closet
- Loft with additional bedrooms and bathroom
- Double car garage
- 9 ft. ceilings on main floor
- Spa-inspired ensuite with double sinks, free-standing soaker tub and separate shower with marble seat and glass enclosure

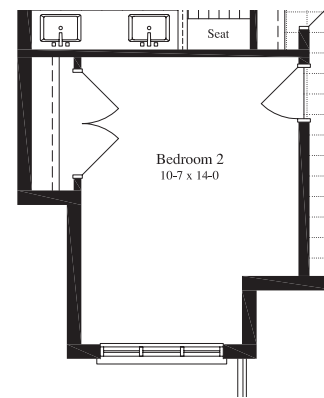
FLOOR PLAN OPTIONS



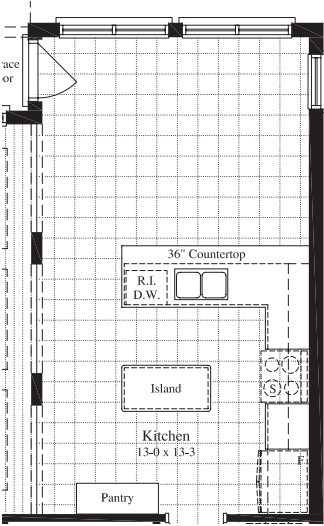
LAVISH MASTER BEDROOM RETREAT



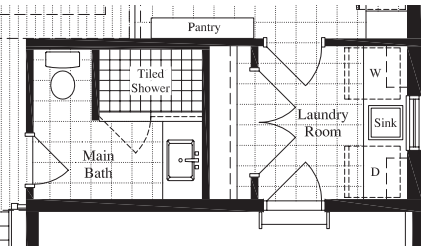
GUEST BEDROOM



PENINSULA KITCHEN



CONVENIENT 3-PIECE GUEST BATHROOM



EXPANDED LAUNDRY & MUDROOM

