



## Sol Levinson & Bros. Funeral Home Newsletter

April 2018

### Passover, Jews and Israel: A Journey of Purpose



A few weeks ago, Matthew Levinson and Greg King went on a journey to Israel coordinated by The Associated. Greg took some time to reflect on their trip, share some memorable moments, and provide his thoughts on the connections between the Passover story and the story of Israel.

He remarks, "Collectively, our journey - much less weighty than that of the Jews fleeing Pharaoh's oppression - was meant to learn about Israel and what The Associated is doing to promote and support the Jewish homeland." We hope you will enjoy [reading this blog post](#) about their travels and Greg's insights.

### Healthy Living for Your Brain and Body: Ask the Expert Luncheon

Physical health & exercise, diet & nutrition, cognitive activity, and social engagement - join us on May 15 at Linwoods to hear from a representative of the Alzheimer's Association who will provide the latest research on how to live a full, vibrant, healthy life.

Reservations are due by Monday, May 7. Please [see our blog post](#) for more information and how to RSVP.



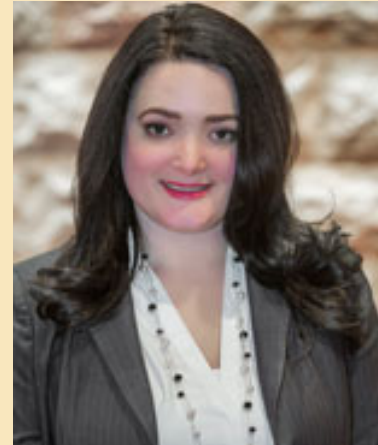
## Pikesville Bereavement Support Group - Registration Open

Sol Levinson & Bros. is sponsoring and hosting an 8-week bereavement support group beginning in May. Registration is required. Please contact Jewish Community Services at 410-466-9200 for more information.

---

### Meet our "Family": Candace Cannon, Funeral Director, 5 Years at Levinson's

As a funeral director, Candace assists families in making funeral arrangements, helps guide families through the funeral process, and specializes in helping families who wish to plan ahead and make their funeral arrangements in advance. Candace also helps with Levinson's social media and communications such as this newsletter.



Candace lives in Catonsville, attended Catonsville High School, then attended CCBC where she attained her degree in mortuary science. Prior to her career at Sol Levinson, Candace worked in a corporate environment as a human resources specialist, where she gained many of the interpersonal skills that have helped her establish a close rapport with families and offer the kind of support they need. When asked about how she feels about working for a family-owned business, Candace said, "I really like it - I have the chance to work with great, caring people, and we all genuinely care about the jobs we do. We are a tight-knit group, and we all do our best to deliver the highest level of service and professionalism to our families. I think it is our own strong support system that enables us to give the very best service to the community."

In Candace's spare time, she and her husband Frank enjoy renovating their home, bringing it back to its 1930's architectural beauty. She also spends time gardening and entertaining friends. Candace is a running enthusiast, enjoys trying out new "clean eating" recipes, and roller skating for fun.

Levenson's appreciates Candace's warm and attentive personality, and her dedication to giving impeccable and attentive care to the families in the community.

---

### Plan Ahead

There are several important reasons to pre-plan a funeral. Planning ahead helps provide peace of mind for you and your family, and eases the financial burden of a funeral. It is also an acceptable way to spend down a person's assets.

Now, when you sit down with us to plan ahead for yourself or a loved one, you will get a personalized copy of the [Levinson's Pre-Planning Guide](#), filled with organizational resources.



Click the image to watch our video, or [go to our website](#) and use the [Plan Ahead form](#) to get started.

---

### Aftercare

Levinson's bereavement library, support groups, and educational events in Pikesville and Columbia ensure that the families we care for have support long after the funeral service ends.

You can find more details by going to our [Aftercare Resources](#) page.

---

## Daily Funeral Schedule

If you would like to receive Levinson's Daily Funeral Schedule every morning by email, [click here to sign up.](#)

---

### **Pikesville Office & Chapels**

Sol Levinson & Bros., Inc.  
8900 Reisterstown Road  
Pikesville, MD 21208

Voice: (410) 653-8900  
Fax: (410) 653-1613  
Toll Free: (800) 338-1701  
Email: [info@sollevinson.com](mailto:info@sollevinson.com)  
Web: [www.sollevinson.com](http://www.sollevinson.com)

### **Columbia Arrangement Center**

Sol Levinson & Bros.  
Funeral Services, P.A.  
5560 Sterrett Place, Suite 204  
Columbia, MD 21044  
*Restricted - Operating out of Sol Levinson & Bros., Inc.,  
Pikesville, MD*

Voice: (410) 730-7230  
Fax: (410) 730-7353  
Toll Free: (800) 338-1701  
Email: [HowardCounty@sollevinson.com](mailto:HowardCounty@sollevinson.com)  
Web: [www.sollevinson.com](http://www.sollevinson.com)

STAY CONNECTED:

