



# Matrex

## MATS & MATTING

# Product Range

24b Portadown Rd  
Lurgan  
Co. Armagh  
BT66 8QX

Tel : 02838 328857  
Fax: 02838 321058  
E : [matrex@btconnect.com](mailto:matrex@btconnect.com)

# **Product Range 2017**

## **1. Nuway Entrance Matting**

- Nuway Grid
- Nuway Connect
- Nuway Tuftiguard

## **2. Coral Clean Off Zone Matting**

- Coral Classic
- Coral Brush
- Coral Duo
- Coral Welcome
- Coral Click
- Coral Tiles
- Coral Colour Chart

## **3. Coir Matting**

## **4. Logo Mats**

- MC Print Mats
- MC logo runner mats
- Coir Logo Mats

## **5. Rubber Matting**

- Diamond rubber
- Checkered rubber
- Fine fluted rubber
- Studded rubber
- Wide grooved rubber
- Weight lifting mats

## **6. Plastic Matting**

- Heronrib
- Vynagrip

## **7. Anti-Fatigue Matting**

- Checkered anti-fatigue
- G-Stand anti-fatigue
- HD ring mats anti-fatigue
- TD anti-fatigue
- Bordered anti-fatigue

## **8. PVC interlocking floor tile**

## **9. Edging**

## **10. Framing**



24b Portadown Rd  
Lurgan  
Co. Armagh  
BT66 8QX

Tel : 02838 328857

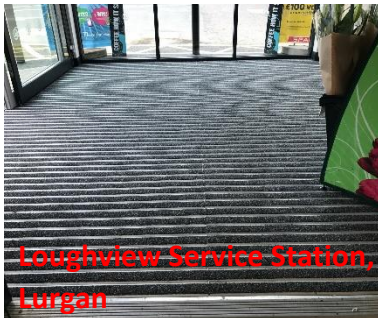
Fax: 02838 321058

E : [matrex@btconnect.com](mailto:matrex@btconnect.com)

## **SUPPLIER AND INSTALLERS OF NUWAY ENTRANCE MATTING SYSTEMS BY FORBO**

Nuway Tuftiguard; Nuway Grid; and Nuway Connect

Prices and samples available on request from Matrex.



### **NUWAY TUFTIGUARD**

At the heart of the nuway range, Tuftiguard classic is the most widely used rigid engineered entrance mat in the UK.

Tuftiguard has the durability, strength and structural integrity to deliver excellent performance and appearance retention in intense traffic locations.

### **NUWAY CONNECT**

Nuway connect is a very versatile roll up single sided entrance system that's easy to shape on site, making it ideal for awkwardly shaped entrances. It's also available with a wide choice of inserts allowing the mat to be adapted to suit individual requirements.

### **NUWAY GRID**

Nuway Grid offers a contemporary and cost effective alternative to Nuway tuftiguard entrance matting and is an ideal solution in very heavy traffic entrance areas where aesthetic considerations are paramount.





24b Portadown Rd  
Lurgan  
Co. Armagh  
BT66 8QX

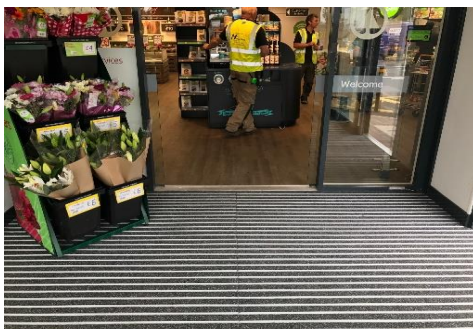
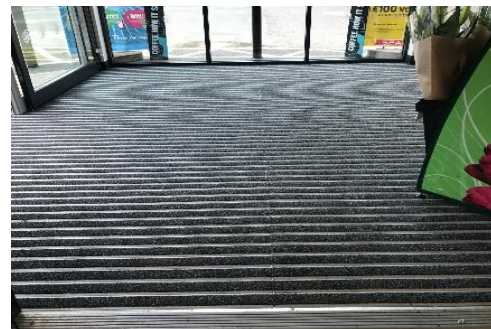
Tel : 02838 328857  
Fax: 02838 321058  
E : [matrex@btconnect.com](mailto:matrex@btconnect.com)

## **NUWAY GRID**

**Grid Burford** – Ribbed needle felt insert

**Grid Coral Inserts**- standard choice of 5 coral classic colours (4701, 4730, 4753, 4764, 4750) and 5 coral brush colours (5714, 5721, 5730, 5716, 5722)

**Grid Ultagrip**- Multi-directional rubber providing excellent slip resistance in all directions



Nuway Grid offers a contemporary and cost effective alternative to Nuway tuftiguard entrance matting and is an ideal solution in very heavy traffic entrance areas where aesthetic considerations are paramount.



24b Portadown Rd  
Lurgan  
Co. Armagh  
BT66 8QX

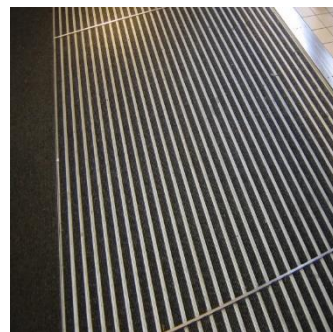
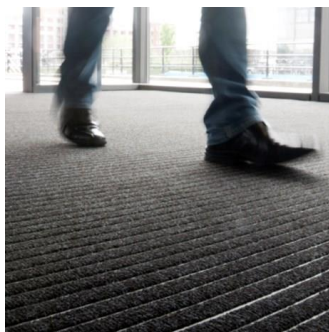
Tel : 02838 328857  
Fax: 02838 321058  
E : [matrex@btconnect.com](mailto:matrex@btconnect.com)

## **NUWAY CONNECT**

**Connect Classic** – standard choice of 5 coral classic colours  
(4701, 4730, 4753, 4764, 4750)

**Connect Ultra gip-** Multi-directional rubber providing  
excellent slip resistance in all directions

**Connect Bristle-** 4-row bristle for removal of coarse dirt

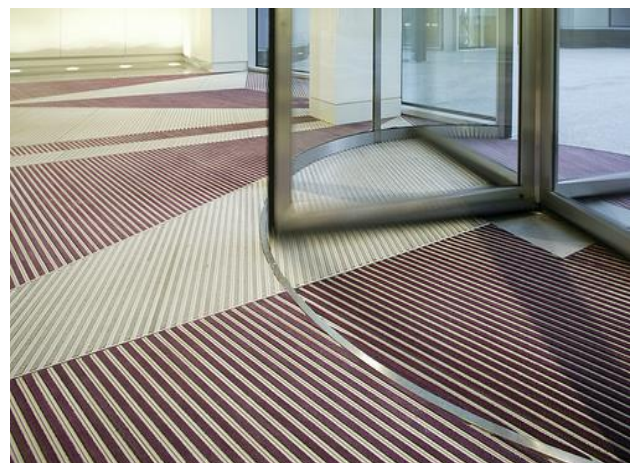


Nuway connect is a very versatile roll up single sided entrance system that's easy to shape on site, making it ideal for awkwardly shaped entrances. It's also available with a wide choice of inserts allowing the mat to be adapted to suit individual requirements.



## NUWAY TUFTIGUARD

Tuftiguard plain; tuftiguard classic and tuftiguard design.



At the heart of the nuway range, Tuftiguard classic is the most widely used rigid engineered entrance mat in the UK. Tuftiguard has the durability, strength and structural integrity to deliver excellent performance and appearance retention in intense traffic locations.



# Matrex

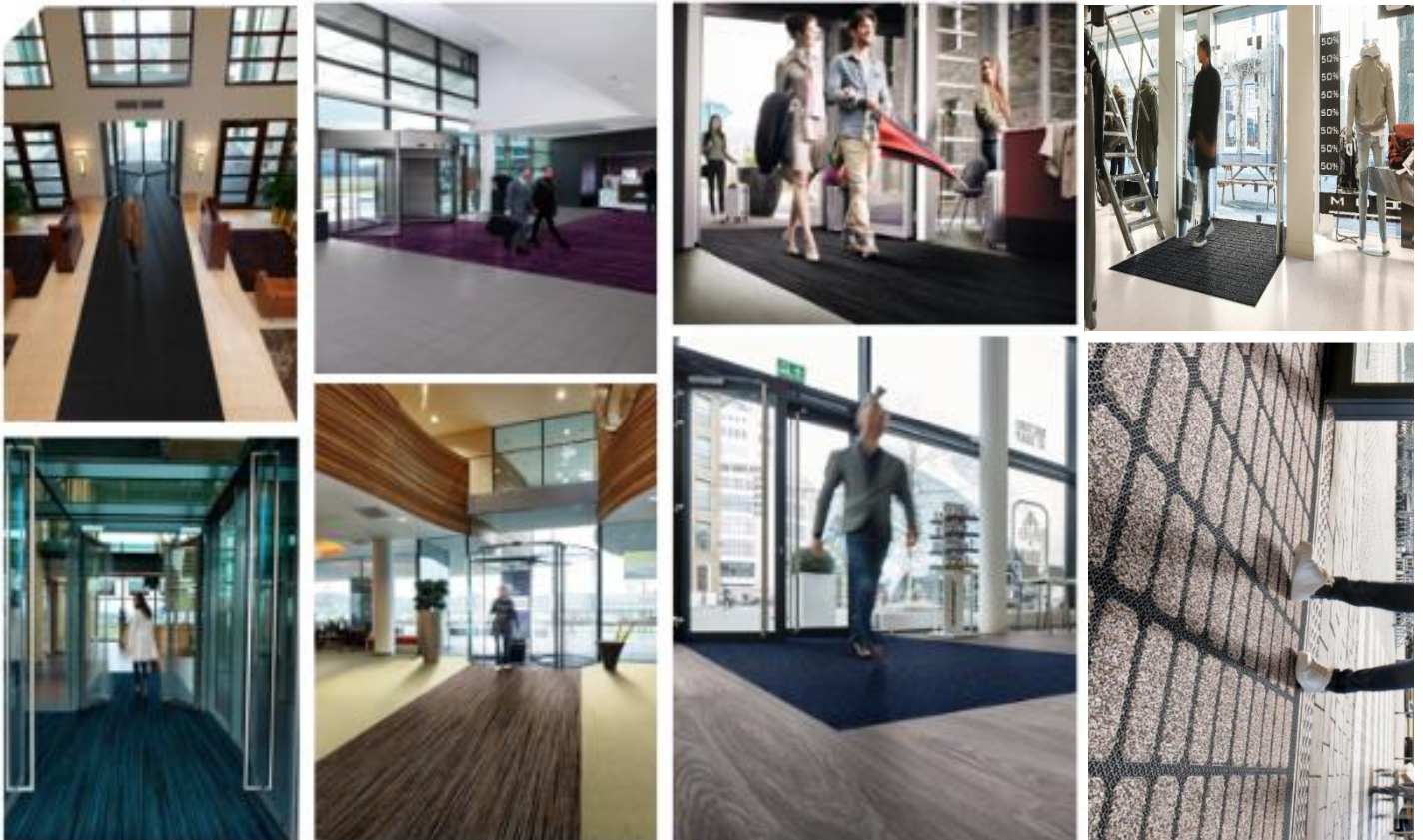
## MATS & MATTING

24b Portadown Rd  
Lurgan  
Co. Armagh  
BT66 8QX

Tel : 02838 328857  
Fax: 02838 321058  
E : [matrex@btconnect.com](mailto:matrex@btconnect.com)

## **SUPPLIER AND STOCKIST OF CORAL CLEAN OFF ZONE MATTING**

Coral Brush; Coral Classic; Coral Duo; Coral Welcome; Coral Click; Coral Tiles



Coral entrance flooring delivers superior performance in even the toughest environments. Whether facing rain, snow, sand or soil, Coral keeps the outside from getting inside. Coral entrance floors are highly functional and, through their design options, always from an integral part of the buildings design scheme.

Coral has been the international market leader in textile entrance flooring for almost 50 years and now offers you more choice than ever before. Each individual range in the collection has been designed to interact with different soiling behaviour as every entrance is a unique environment.

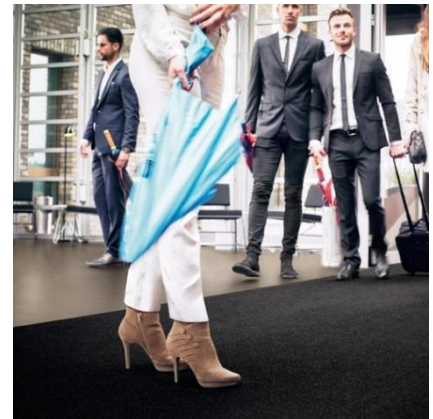
For further information visit: <http://www.forbo.com/flooring/en-uk/>



24b Portadown Rd  
Lurgan  
Co. Armagh  
BT66 8QX

Tel : 02838 328857  
Fax: 02838 321058  
E : [matrex@btconnect.com](mailto:matrex@btconnect.com)

## CORAL CLASSIC



						
4730 Raven Black	4721 Mouse Grey	4701 Anthracite	4751 Silver Grey	4727 Navy Blue	4753 Bright Red	4759 Old Rose
						
4764 Taupe	4750 Warm Balck	4744 Espresso	4756 <u>Bronzeto</u>	4774 Khaki	4758 Olive	

Coral Classic is the ultimate moisture absorber. This has clear benefits. First, the interior floor coverings stay cleaner, longer. Second, resilient floors such as vinyl, ceramics, wood and concrete are less likely to become slippery and dangerous.





24b Portadown Rd  
Lurgan  
Co. Armagh  
BT66 8QX

Tel : 02838 328857  
Fax: 02838 321058  
E : [matrex@btconnect.com](mailto:matrex@btconnect.com)

## CORAL BRUSH



							
5764 Petrified Grey	5754 Straw Brown	5767 Slate Blue	5716 Masala Brown	5741 Cannon Grey	5750 Aztec Black	5715 Charcoal Grey	5724 Chocolate Brown
							
5714 Shark Grey	5723 Cardinal Red	5706 Brick Red	5727 Stratos Blue	5730 Vulcan Black	5722 Cornflow Blue	5709 Royal Purple	5705 Bondi Blue
							
			5721 Hurrican Grey	5710 Asphalt Grey			

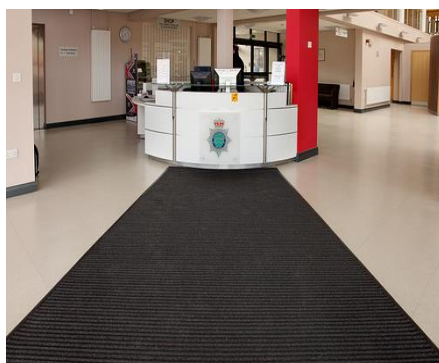
Coral Brush is suitable for all types of entrance areas, absorbing moisture and removing dry soiling as the weather demands. Created around simple, solid and linear designs, this entrance flooring works well with any interior and serves well as an eye-catcher.



24b Portadown Rd  
Lurgan  
Co.Armagh  
BT66 8QX

Tel : 02838 328857  
Fax: 02838 321058  
E : [matrex@btconnect.com](mailto:matrex@btconnect.com)

## CORAL DUO



							
9730 Black Diamond	9721 Dark Steel	9710 Luna Pearl	9723 African Red	9729 Volga Blue	9725 Café Bahia	9724 Café Supreme	9714 Sicilian Sand

Coral Duo is the best choice for smaller entrance areas. With its ribbed construction, Coral Duo is not only functional, it also provides an aesthetically pleasing look to any entrance area and is easy to combine with Coral Brush and Classic in larger entrance spaces.






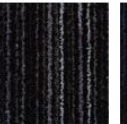
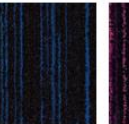
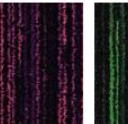
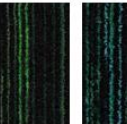



24b Portadown Rd  
Lurgan  
Co. Armagh  
BT66 8QX

Tel : 02838 328857  
Fax: 02838 321058  
E : [matrex@btconnect.com](mailto:matrex@btconnect.com)

## CORAL WELCOME



							
3206 Volcano	3202 Desperado	3201 Silver Shadow	3210 Black Magic	3207 Blue Velvet	3219 Colour Purple	3208 Matrix	3205 Blue Lagoon

Where design meets environment. With its contemporary linear design and rich, deep pile, Coral Welcome packs the style and aesthetic appeal of a luxury carpet. Besides looking fabulous, Coral Welcome is an environmentally advanced entrance flooring.



# Matrex

## MATS & MATTING

24b Portadown Rd  
Lurgan  
Co. Armagh  
BT66 8QX

Tel : 02838 328857  
Fax: 02838 321058  
E : [matrex@btconnect.com](mailto:matrex@btconnect.com)

## CORAL TILES



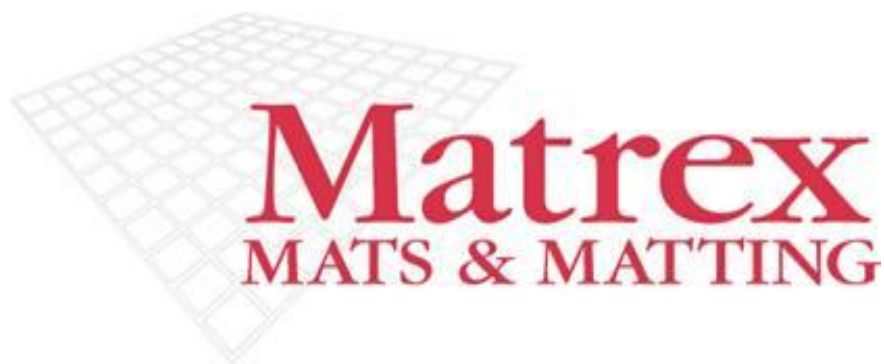
Thickness	Size	Colour	Backing
9mm	50 x 50 cm	Coral Classic- 13 colours Coral Brush – 18 colours	PVC Backing

Coral tiles combine all the moisture absorbing properties of Coral Classic and Coral Brush but with the flexibility that comes with 50 x 50 cm tile formats. Using Coral tiles can reduce cut off waste and also allows for quicker installation. This is particularly relevant when downtime or retail store opening times are at stake. In addition to the increased flexibility of fitting, 50 x 50cm tiles also allows easier storage and handling.

Coral tiles are available in all colours from the Coral Brush and Coral Classic collection. The colours of both collection can be mixed for a very functional, though very attractive entrance at the same time. The tiles can be laid monolithic or tessellated.

Coral Tiles are packed 12 tiles in a box (3m<sup>2</sup>) and they have a PVC backing.




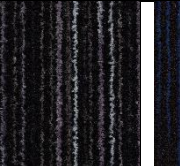
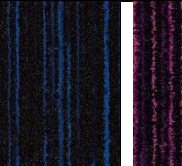
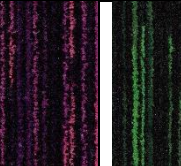
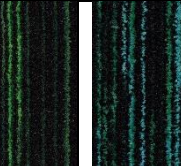
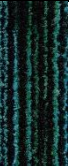




24b Portadown Rd  
Lurgan  
Co.Armagh  
BT66 8QX

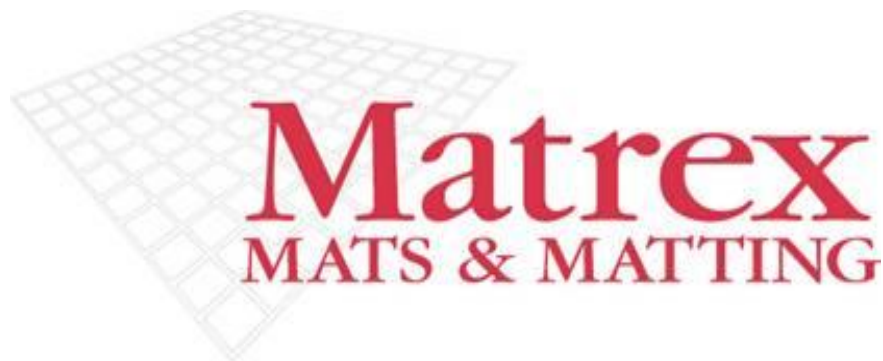
Tel : 02838 328857  
Fax: 02838 321058  
E : [matrex@btconnect.com](mailto:matrex@btconnect.com)

## Coral Welcome

							
3206 Volcano	3202 Desperado	3201 Silver Shadow	3210 Black Magic	3207 Blue Velvet	3219 Colour Purple	3208 Matrix	3205 Blue Lagoon

## Coral Brush

							
5764 Petrified Grey	5754 Straw Brown	5767 Slate Blue	5716 Masala Brown	5741 Cannon Grey	5750 Aztec Black	5715 Charcoal Grey	5724 Chocolate Brown
							
5714 Shark Grey	5723 Cardinal Red	5706 Brick Red	5727 Stratos Blue	5730 Vulcan Black	5722 Cornflow Blue	5709 Royal Purple	5705 Bondi Blue
							
			5721 Hurrican Grey	5710 Asphalt Grey			



24b Portadown Rd  
Lurgan  
Co.Armagh  
BT66 8QX

Tel : 02838 328857  
Fax: 02838 321058  
E : [matrex@btconnect.com](mailto:matrex@btconnect.com)

## Coral Classic

						
4730 Raven Black	4721 Mouse Grey	4701 Anthracite	4751 Silver Grey	4727 Navy Blue	4753 Bright Red	4759 Old Rose
						
4764 Taupe	4750 Warm Balck	4744 Espresso	4756 Bronzeto	4774 Khaki	4758 Olive	

## Coral Duo

							
9730 Black Diamond	9721 Dark Steel	9710 Luna Pearl	9723 African Red	9729 Volga Blue	9725 Café Bahia	9724 Café Supreme	9714 Sicilian Sand



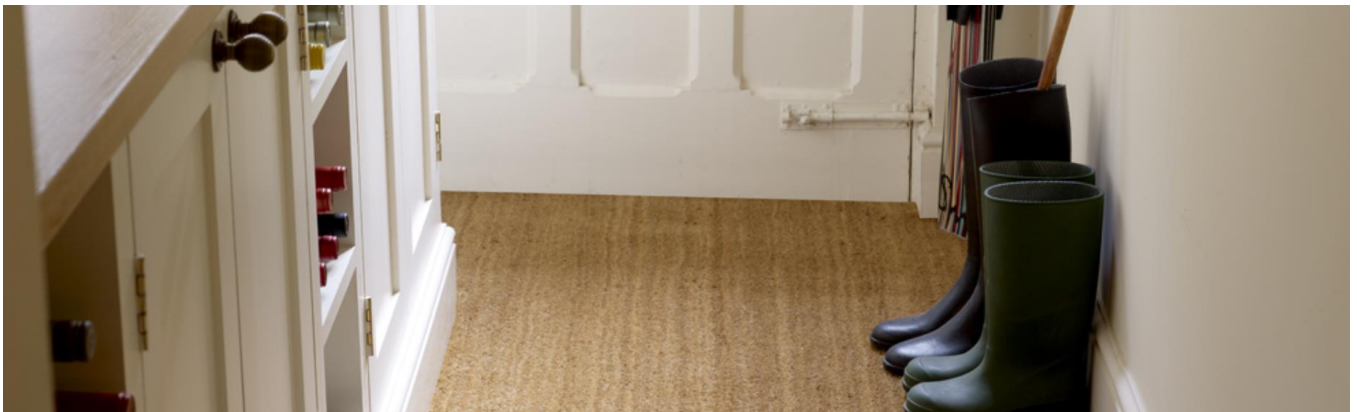


24b Portadown Rd  
Lurgan  
Co. Armagh  
BT66 8QX

Tel : 02838 328857  
Fax: 02838 321058  
E : [matrex@btconnect.com](mailto:matrex@btconnect.com)

## COIR MATTING

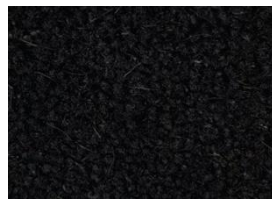
Our coconut matting is a perfect way to protect your floors from unwanted dirt and with six colours available it is stylish, practical and low maintenance.



For enhancing entranceways and fitting into mat wells (recesses) coir matting is PVC backed which prevents any moisture falling through the mat onto the floor below. The coir mat face is made from sustainable coconut fibres and is naturally eco-friendly. The fibres are twisted to help resist packing and crushing over time.



Natural



Black



Red



Green



Brown



Havana



Blue

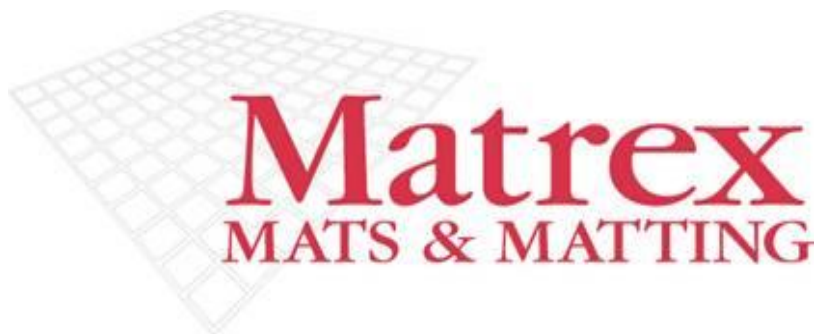


Grey

1m or 2m rolls; 17mm thick

\*Natural comes 13mm thick and 17mm thick\*

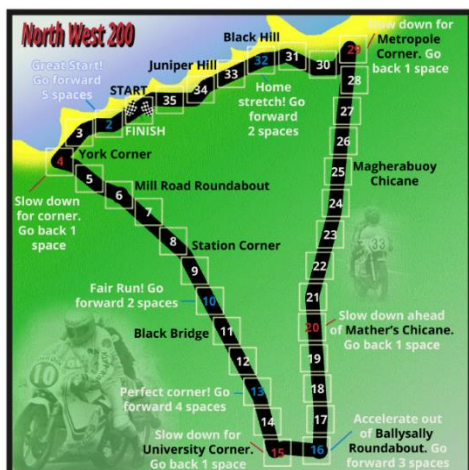
Cut lengths available



24b Portadown Rd  
Lurgan  
Co. Armagh  
BT66 8QX

Tel : 02838 328857  
Fax: 02838 321058  
E : [matrex@btconnect.com](mailto:matrex@btconnect.com)

## MC PRINT MATS

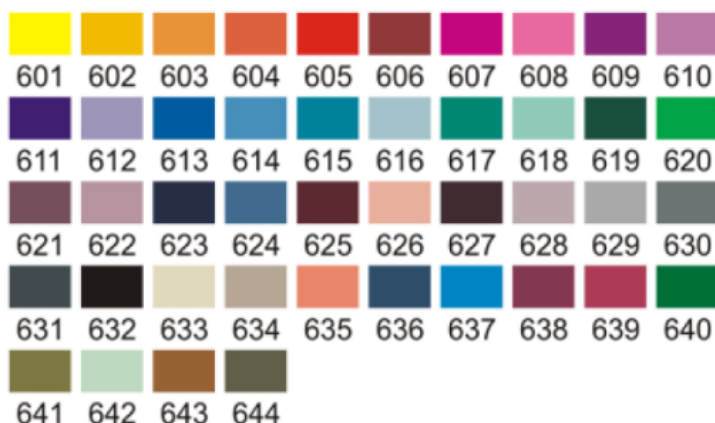


Logo mats are an attractive way to greet visitors to your premises, whether you are a business, retail store, hotel, school, college, playgroup or sports club, a fully bespoke Matrex logo mat makes an excellent lasting impression on your visitors, whilst providing professional standards of functionality that are second to none.

Our printed logo mats are available with a choice of rubber backing types depending on where you will position your mat. Our standard anti-slip black rubber backing is available in flat back for hard floor surface areas (such as ceramic tiles, hard wood or laminate floors) or gripper backing (which is more suited to carpeted floors or fabric tiled areas). We also have a new white rubber backing that is specially engineered for highly polished surfaces such as wooden floors and teak boat decks.

### Features

- Customised designs or logo
- High graphic option available
- Large colour pallet
- Pantone matching available
- 7 standard sizes: 60 x 85 cm; 120 x 85 cm; 150 x 85 cm; 300 x 85 cm; 175 x 115 cm; 240 x 115 cm; 240 x 150 cm
- Bespoke sizes available
- Washable 40°C
- Anti-slip rubber backing
- Anti-trip border
- 2-years manufacturing guarantee
- 11-years colourfast guarantee



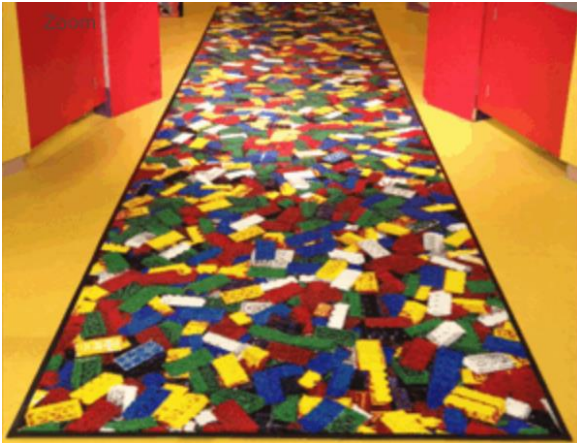




24b Portadown Rd  
Lurgan  
Co. Armagh  
BT66 8QX

Tel : 02838 328857  
Fax: 02838 321058  
E : [matrex@btconnect.com](mailto:matrex@btconnect.com)

## MC LOGO RUNNER

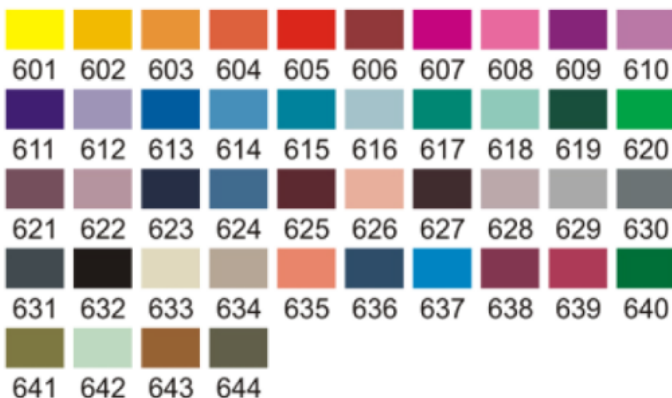


Give your visitors the red carpet treatment with a bespoke printed logo runner mat. If red is not your colour, choose from our huge range of alternative colour options.

The Matrex logo runner is custom printed on PVC backing, allowing for very long bespoke mats. Up to 20M long, these runners are great for red carpet events, wedding ceremonies, "make a statement" walkways and long hallways. Customising with your own graphics or messages will add prestige to your premises or event, making your guests feel welcome and reassured that they are in good company.

### Features

- Extra large runner construction
- Customised designs or logos
- Great for red carpet events
- Large colour pallet
- Pantone matching available
- 4 standard widths: 100cm; 120cm, 160cm and 200cm
- PVC side borders



# Matrex

## MATS & MATTING

24b Portadown Rd  
Lurgan  
Co. Armagh  
BT66 8QX

Tel : 02838 328857  
Fax: 02838 321058  
E : [matrex@btconnect.com](mailto:matrex@btconnect.com)

## COIR LOGO MATS



Coir logo mats give the entrance to your building a personalised look, whilst ensuring that dirt and dust is removed from shoes before it enters your premises.

Coir logo mats offer extremely effective dirt removal in areas of high footfall, and the hard-wearing nature of the coconut fibre ensures the mat will perform effectively year after year.

With a wide choice of colours, combined with your choice of text and logo design, we can manufacture your mat to any size required, tailoring the finished mat to suit your entrance or matwell.

Coir logo mats perform well in retail outlets, bars, clubs, pubs, shops, schools, and are ideal to be sited in high traffic areas.

### Features

- 100% natural coir fibres
- Loose lay or custom fit
- Strong PVC backing
- Bespoke sizes available
- 12-month manufacturing guarantee





## Matrex Rubber Matting



**Matrex Checkered Rubber Matting**

Thickness	Size	Length	Colour
3mm	1.20m wide	10m rolls	Black
5mm	1.50m wide	12m rolls	
*Cuts available on Request*			



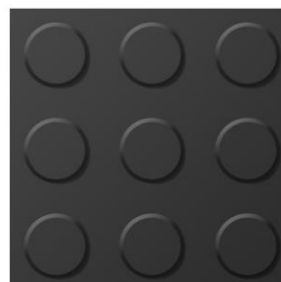
**Matrex Fine Fluted Rubber Matting**

Thickness	Size	Length	Colour
3mm	1m wide 1.20m wide	10m rolls	Black
*Cuts available on Request*			



**Matrex Wide Grooved Rubber Matting**

Thickness	Size	Length	Colour
5mm	1.20m wide	10m rolls	Black
*Cuts available on Request*			



**Matrex Studded Rubber Matting**

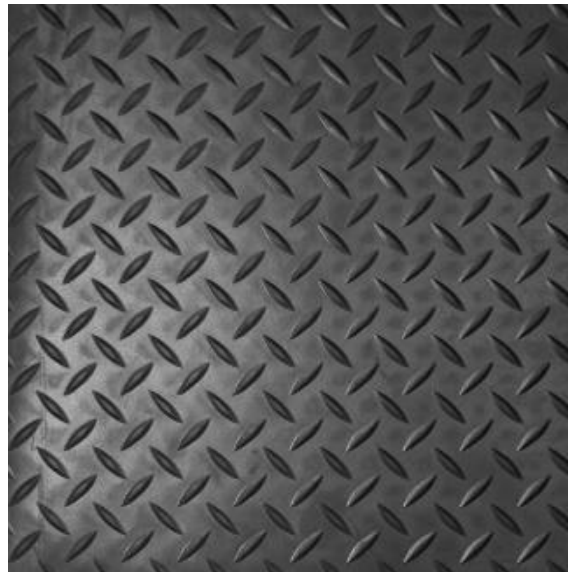
Thickness	Size	Length	Colour
3mm	1.20m wide	10m rolls	Black
*Cuts available on Request*			



**Matrex Diamond Rubber Matting**

Thickness	Size	Length	Colour
3mm 5mm	1.50m wide	10m rolls	Black
*Cuts available on Request*			

## **Matrex Diamond Rubber Matting**



Matrex diamond rubber matting is a general purpose rubber matting with a diamond pattern design. Available in two standard thickness' 3mm and 5mm.

Thickness	Size	Length	Colour
3mm 5mm	1.50m wide	10m rolls	Black
*Cuts available on Request*			

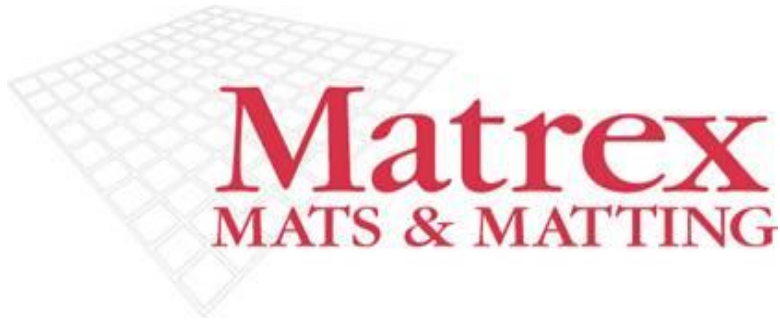


## Matrex Checkered Rubber Matting



Matrex checkered rubber matting is a general purpose rubber matting with a checker plate pattern design. Available in two standard thickness' 3mm and 5mm.

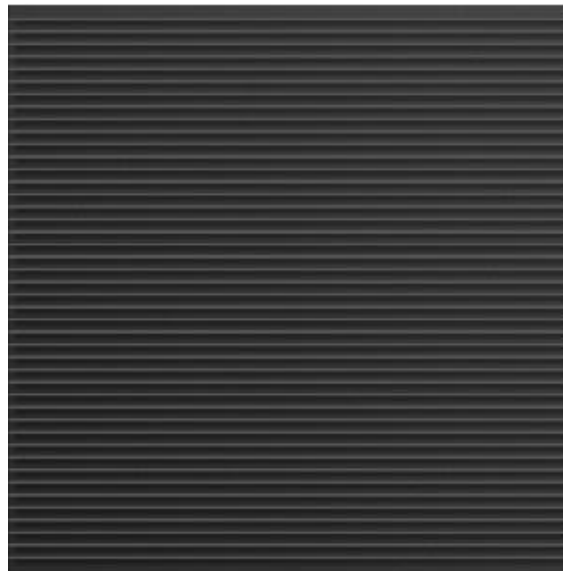
Thickness	Size	Length	Colour
3mm	1.20m wide	10m rolls	Black
5mm	1.50m wide	12m rolls	
*Cuts available on Request*			



24b Portadown Rd  
Lurgan  
Co. Armagh  
BT66 8QX

Tel : 02838 328857  
Fax: 02838 321058  
E : [matrex@btconnect.com](mailto:matrex@btconnect.com)

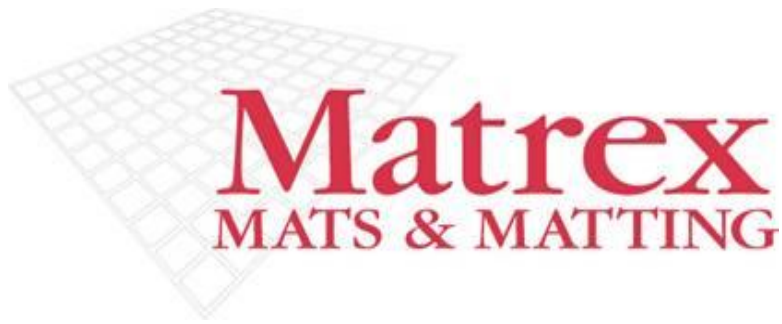
## **Matrex Fine Fluted Rubber Matting**



Matrex fine fluted rubber matting is a high quality rubber matting with a castellated pattern design. Available in 3mm thick.

Thickness	Size	Length	Colour
3mm	1m wide 1.20m wide	10m rolls	Black
*Cuts available on Request*			

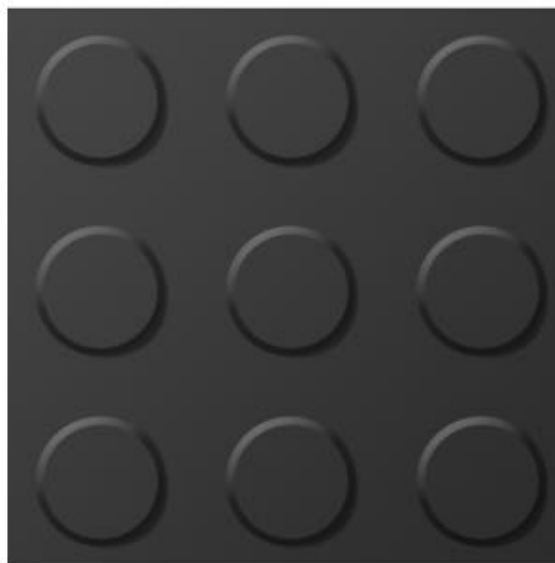




24b Portadown Rd  
Lurgan  
Co.Armagh  
BT66 8QX

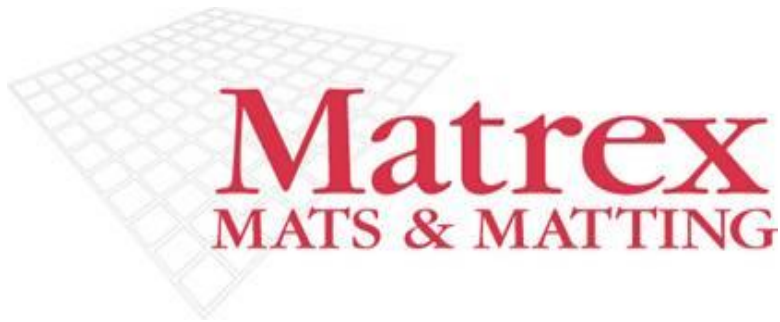
Tel : 02838 328857  
Fax: 02838 321058  
E : [matrex@btconnect.com](mailto:matrex@btconnect.com)

## **Matrex Studded Rubber Matting**



Matrex Studded rubber matting is an attractive and durable rubber matting with a more pronounced raised matt finish 'Circular Stud' coin pattern design. Available in 3mm thick.

Thickness	Size	Length	Colour
3mm	1.20m wide	10m rolls	Black
*Cuts available on Request*			



24b Portadown Rd  
Lurgan  
Co. Armagh  
BT66 8QX

Tel : 02838 328857  
Fax: 02838 321058  
E : [matrex@btconnect.com](mailto:matrex@btconnect.com)

## Matrex Wide Grooved Rubber Matting



Matrex wide grooved rubber matting is a general purpose rubber matting with a broad ribbed pattern design. Available in 5mm thick.

Thickness	Size	Length	Colour
5mm	1.20m wide	10m rolls	Black
*Cuts available on Request*			



## **Matrex Weight Lifting Mats**



Matrex Weight Lifting mats are a heavy duty mat ideally suited for free weight areas. They are extremely hard wearing as they are manufactured from solid natural rubber. These mats protect the floor from falling heavy weights and reduce noise levels from the impact of dropped weights. Reversible and wide ribbed they offer extra traction. Mats can be loose laid onto the floor and compressed together to produce coverage for larger floor areas.

# Matrex

## MATS & MATTING

24b Portadown Rd  
Lurgan  
Co. Armagh  
BT66 8QX

Tel : 02838 328857  
Fax: 02838 321058  
E : [matrex@btconnect.com](mailto:matrex@btconnect.com)

## HERONRIB

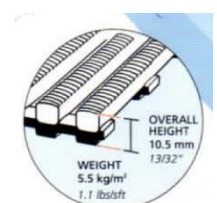
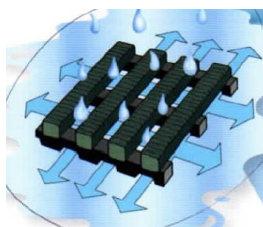
Warm, comfortable, self-draining safety matting



Rolls: 50cm wide x 10m; 100cm wide x 10m; 122cm wide x 10 m

Cut lengths: available on request

Heronrib is the ultimate sports and leisure matting system for use in wet areas where bare foot traffic is extensive. Exceptionally warm and comfortable to stand on, Heronrib has a specially embossed slip-resistant surface and anti-bacterial and anti-fungal additives for assured underfoot hygiene in areas where bacteria tend to harbour. Made from strong, non-porous PVC sections with channelled underbars, Heronrib will automatically self-drain even the largest amounts of water.





# Matrex

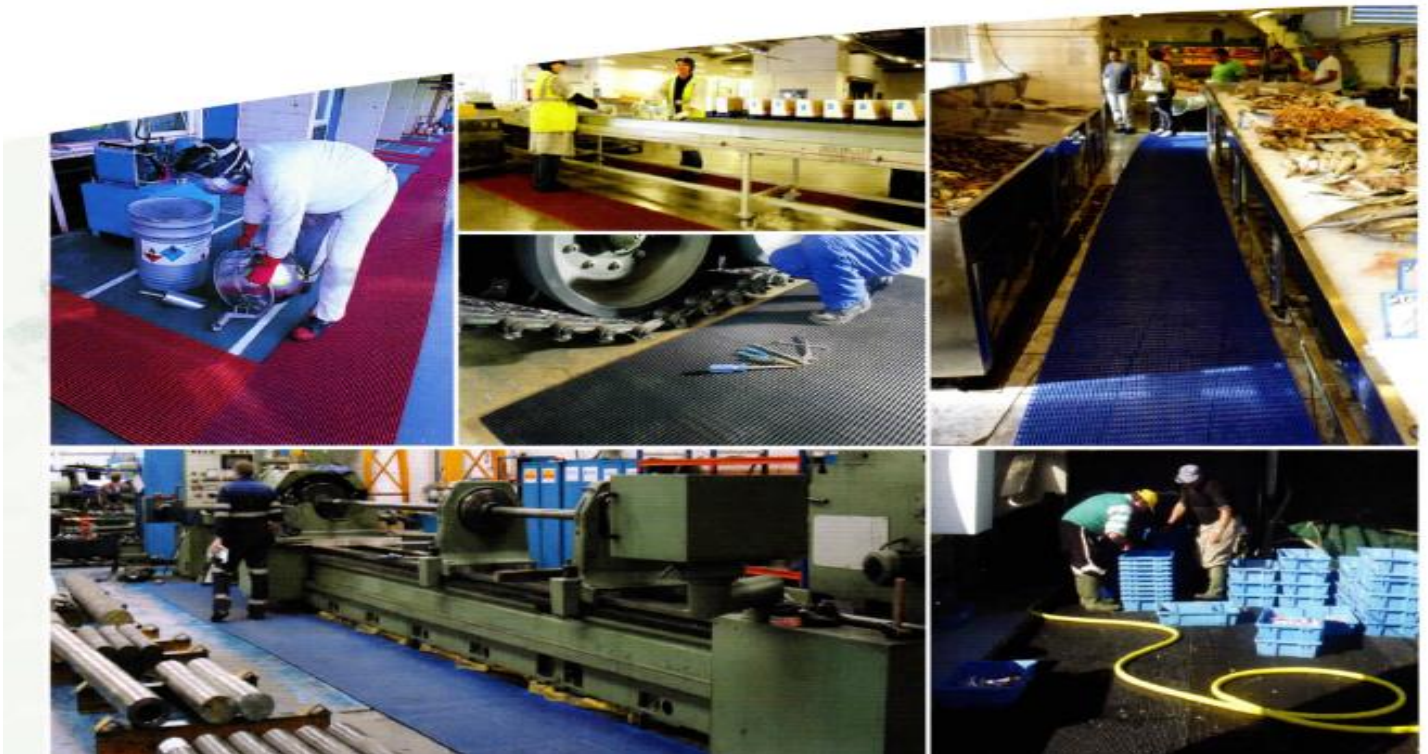
## MATS & MATTING

24b Portadown Rd  
Lurgan  
Co. Armagh  
BT66 8QX

Tel : 02838 328857  
Fax: 02838 321058  
E : [matrex@btconnect.com](mailto:matrex@btconnect.com)

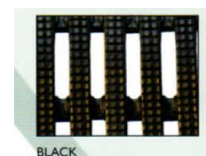
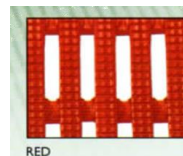
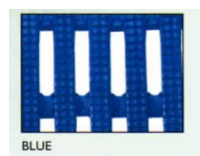
## VYNAGRIP

The ultimate slip resistant matting solution

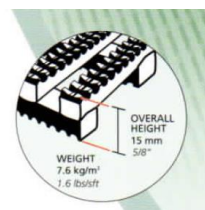


Rolls: 60cm wide x 10m; 90cm wide x 10m; 122cm wide x 10 m

Cut lengths: available on request



Heavy duty slip resistant  
matting with drainage,  
hygienic, easy to clean and  
designed to reduce standing  
fatigue

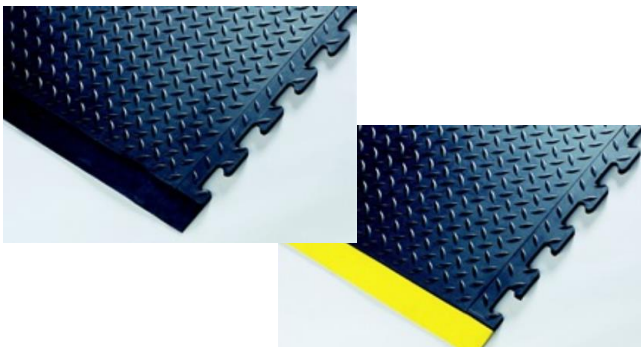




## Matrex anti-fatigue mats

Matrex checker fatigue anti-fatigue mats; Matrex HD ring mats; Matrex G-stand anti-fatigue mat

### Matrex checker fatigue mats

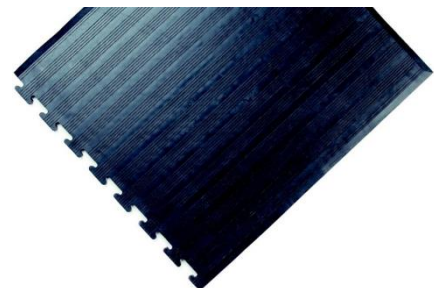


Matrex checker fatigue is an advanced standalone /modular interlocking rubber anti-fatigue runner matting system with a superior slip-resistant diamond cheque plate design traction surfacing sensational underfoot "air pocket" cushioning comfort and bevelled anti-trip safety edging plus the optional extra of special yellow "safety alert" borders.

Thickness: 12mm	Available in: Black Black with yellow borders	Size: 70cm x 78cm
<b>Ex Stock</b>		

Matrex G-stand is a classic anti-fatigue matting with a ribbed easy to clean surface and a honeycomb air cellular underside. Suitable for use behind shop counters, by industrial machines etc. Available in both stand alone and interlocking formats with bevelled edging where appropriate.

### Matrex G-stand anti-fatigue mat



Thickness: 12mm	Available in: Black Terracotta (oil resistant)	Size: 90cm x 150cm
<b>Ex Stock</b>		

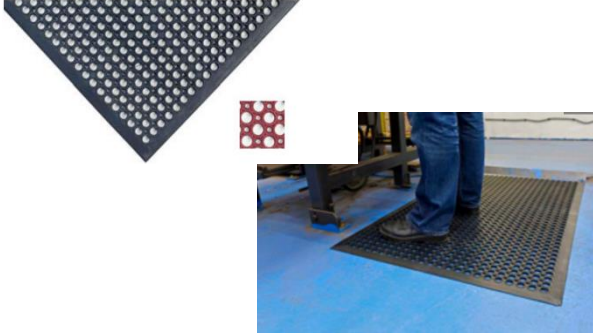
### Matrex HD anti-fatigue ring mats



Matrex HD ring mats are extra heavy duty multi-purpose anti-slip octagonal open construction rubber safety mats for wet areas. Brilliant entrance mats, particularly in external or semi-exposed floor areas subject to rain, sea, snow, mud, sand etc. The attractive octagonal surface design act as superbly effective scrapers while facilitating drainage, its strong sturdy grip assures slip resistance. Matrex HD ring mats are also an excellent anti-fatigue standing matting.

Thickness: 23mm	Available in: Black	Size: 100cm x 150cm
<b>Ex Stock</b>		

## Matrex TD mats

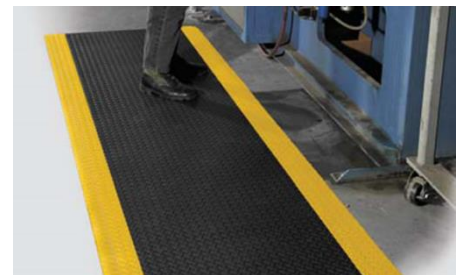


Matrex TD mats have an octagonal design, open construction, all-purpose rubber anti-fatigue safety mats with moulded bevelled anti-trip edges 13mm thick. Matrex TD mats are specially designed for commercial and industrial workstations for standing operatives. The open construction permits easy drain-through and dirt, catchment, etc.

Thickness: 13mm	Available in: Black Terracotta (oil resistant)	Size: 90cm x 150cm
<b>Ex stock</b>		

Super safe heavy duty anti-fatigue standing mats & matting. 4.5mm solid vinyl diamond plate deep embossed anti-slip surfacing on 9.5mm closed cell vinyl foam giving an overall thickness of 14mm. Diamond-Foot not only protects against standing fatigue reducing leg back foot and absenteeism problems but also offers underfoot safety. Diamond-Foot is non- flammable and resists oil grease and chemicals.

## Matrex Bordered Anti-fatigue Mats



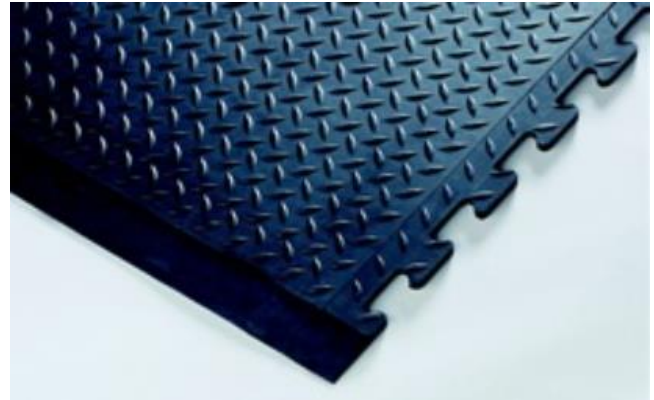
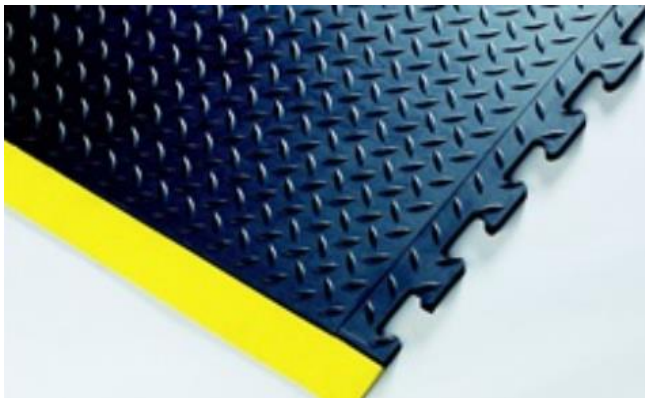
Thickness: 14mm	Available in: Black with yellow borders
<b>Some stock available – mats and rolls</b>	



24b Portadown Rd  
Lurgan  
Co. Armagh  
BT66 8QX

Tel : 02838 328857  
Fax: 02838 321058  
E : [matrex@btconnect.com](mailto:matrex@btconnect.com)

## **Matrex Checker Fatigue Mats**



Matrex checker fatigue is an advanced standalone /modular interlocking rubber anti-fatigue runner matting system with a superior slip-resistant diamond cheque plate design traction surfacing sensational underfoot "air pocket" cushioning comfort and bevelled anti-trip safety edging plus the optional extra of special yellow "safety alert" borders.

Thickness: 12mm	Available in: Black Black with yellow borders	Size: 70cm x 78cm
Ex Stock		

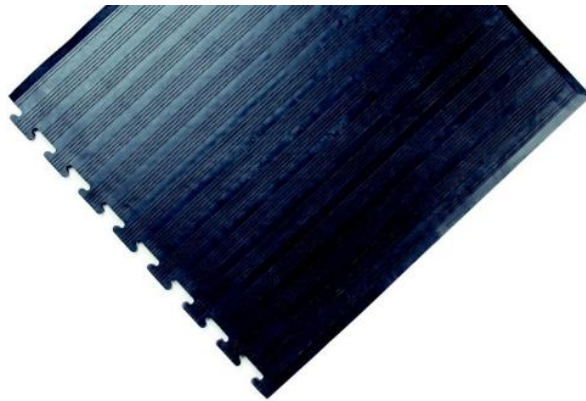




24b Portadown Rd  
Lurgan  
Co. Armagh  
BT66 8QX

Tel : 02838 328857  
Fax: 02838 321058  
E : [matrex@btconnect.com](mailto:matrex@btconnect.com)

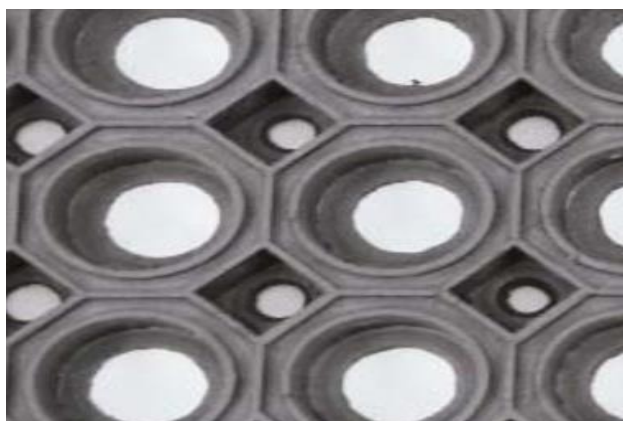
## **Matrex G-stand anti-fatigue mat**



Matrex G-stand is a classic anti-fatigue matting with a ribbed easy to clean surface and a honeycomb air cellular underside. Suitable for use behind shop counters, by industrial machines etc. Available in both stand alone and interlocking formats with bevelled edging where appropriate.

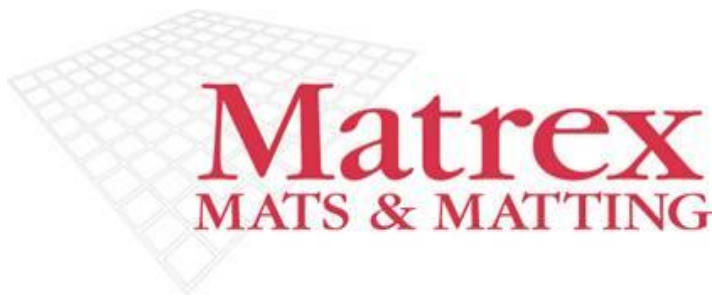
Thickness: 12mm	Available in: Black Terracotta (oil resistant)	Size: 90cm x 150cm
Ex Stock		

## **Matrex HD anti-fatigue ring mats**



Matrex HD ring mats are extra heavy duty multi-purpose anti-slip octagonal open construction rubber safety mats for wet areas. Brilliant entrance mats, particularly in external or semi-exposed floor areas subject to rain, sea, snow, mud, sand etc. The attractive octagonal surface design act as superbly effective scrapers while facilitating drainage, its strong sturdy grip assures slip resistance. Matrex HD ring mats are also an excellent anti-fatigue standing matting.

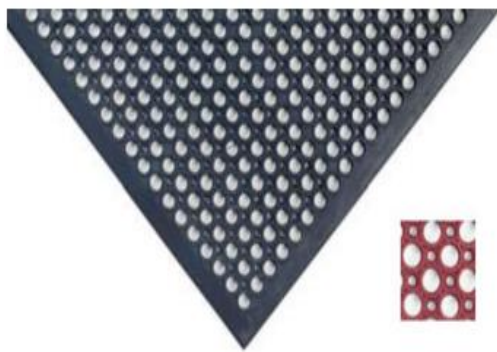
Thickness: 23mm	Available in: Black	Size: 100cm x 150cm
Ex Stock		



24b Portadown Rd  
Lurgan  
Co.Armagh  
BT66 8QX

Tel : 02838 328857  
Fax: 02838 321058  
E : [matrex@btconnect.com](mailto:matrex@btconnect.com)

## Matrex TD mats



Matrex TD mats have an octagonal design, open construction, all-purpose rubber anti-fatigue safety mats with moulded bevelled anti-trip edges 13mm thick. Matrex TD mats are specially designed for commercial and industrial workstations for standing operatives. The open construction permits easy drain-through and dirt, catchment, etc.

Thickness: 13mm	Available in: Black Terracotta (oil resistant)	Size: 90cm x 150cm
Ex stock		

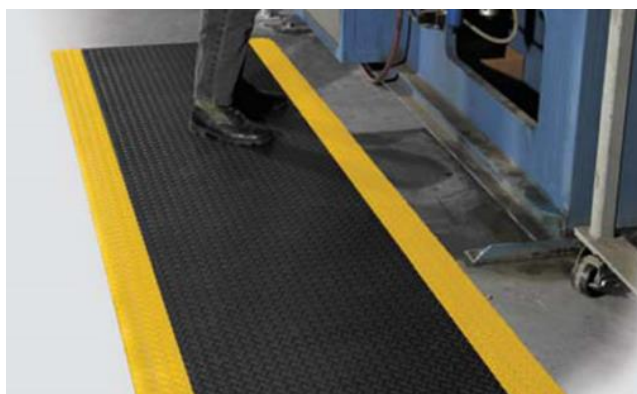




24b Portadown Rd  
Lurgan  
Co. Armagh  
BT66 8QX

Tel : 02838 328857  
Fax: 02838 321058  
E : [matrex@btconnect.com](mailto:matrex@btconnect.com)

## **Matrex Bordered Anti-fatigue Mats**



Super safe heavy duty anti-fatigue standing mats & matting. 4.5mm solid vinyl diamond plate deep embossed anti-slip surfacing on 9.5mm closed cell vinyl foam giving an overall thickness of 14mm. Diamond-Foot not only protects against standing fatigue reducing leg back foot and absenteeism problems but also offers underfoot safety. Diamond-Foot is non- flammable and resists oil grease and chemicals.

Thickness: 14mm	Available in: Black with yellow borders
<b>Some stock available – mats and rolls</b>	

# The PVC Interlocking Floor Tile

No Adhesive, No Sub Floor Preparation!



**Matrex**  
MATS & MATTING

24b Portadown Rd, Lurgan  
Co. Armagh, BT66 8QX

Tel: 02838 328857

Fax: 02838 321058

E: [matrex@btconnect.com](mailto:matrex@btconnect.com)

[www.matrexmatsandmatting.co.uk](http://www.matrexmatsandmatting.co.uk)





#### Ideal application for:

- Schools
- Gyms
- Warehouses
- Offices
- Residential
- Garages
- Factories
- Airports

#### Features:

- No adhesive
- Easy Installation
- 100% Recycled
- Cost Effective
- Anti-Slip
- Heavy Duty
- Anti Bacterial
- ESD / Antistatic

#### Textures:

- Diamond Plate 
- Textured 
- Studded 
- Eclipse Smooth Heavy duty 
- Eclipse Mini Textured 
- Eclipse Mini Slate 



#### Colours & Finishes



Please note: Colours are just a guide, please ask for a sample to see a closer match.

Call **02838 328857** for more information.  
Manufactured in the UK.

**Matrex**  
MATS & MATTING

24b Portadown Rd, Lurgan  
Co. Armagh, BT66 8QX

Tel: 02838 328857

Fax: 02838 321058

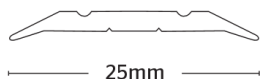
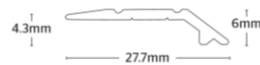
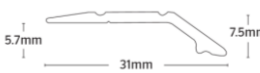
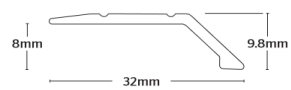
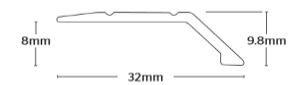
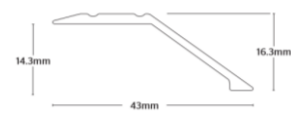
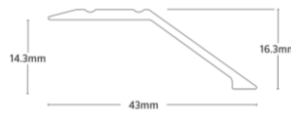
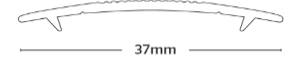

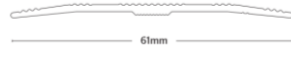

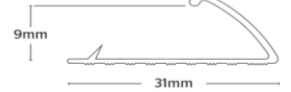
E: [matrex@btconnect.com](mailto:matrex@btconnect.com)

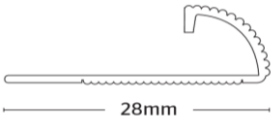
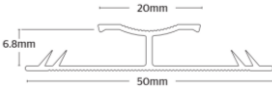
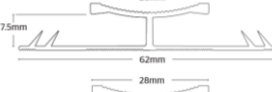
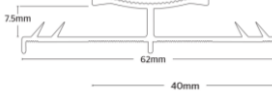

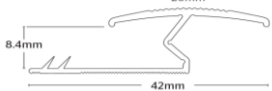
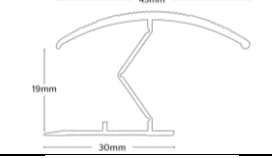
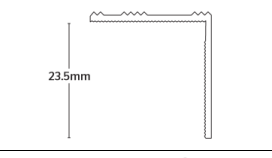

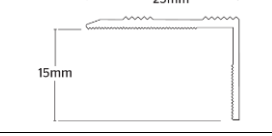
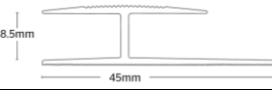
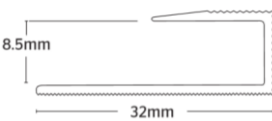
[www.matrexmatsandmatting.co.uk](http://www.matrexmatsandmatting.co.uk)



## EDGINGS

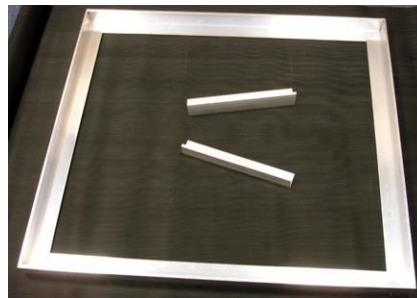
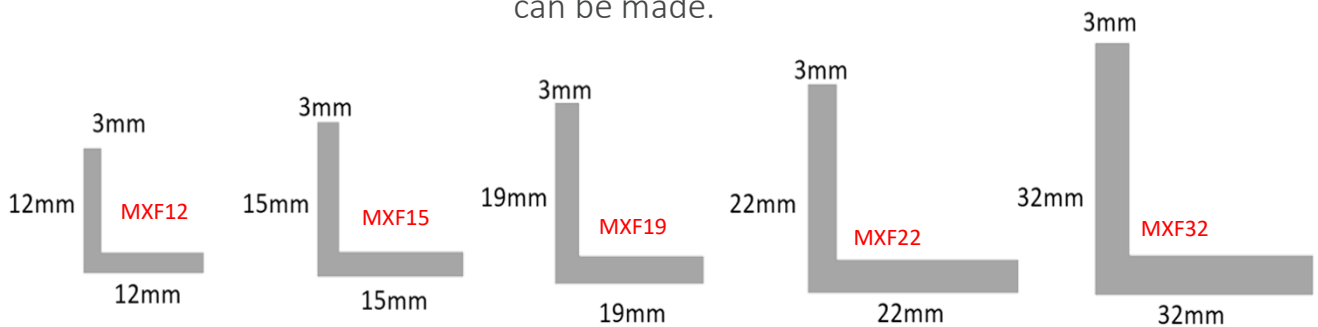
### Aluminium & Gold Anodised Metal Edgings

<u>Code</u>	<u>Type</u>	<u>Width</u>	<u>Picture</u>
M01	Vinyl Cover Strip	25mm	
M02	Vinyl Edge-Small	27mm	
M03	Vinyl Edge- medium	30mm	
M04	8mm Angle Edge	32mm	
M04	8mm Angle Edge Self-Adhesive	32mm	
M05	14mm Angle Edge	43mm	
M05	14mm Angle Edge Self-Adhesive	43mm	
M10	Carpet Cover strip	37mm	
M11	Contract Cover strip	37mm	
M12	Extra wide Cover strip	60mm	
M13	Euro Cover strip Self-adhesive	38.5mm	
M20	Carpet Edge Polished	31mm	

M25	Tile Edge Reeded	28mm	
M30	Dualgrip	50mm	
M31	Dualgrip Heavy Duty	62mm	
M32	Dualgrip Heavy Duty Raised Base	62mm	
M33	14mm Zig Zag	54mm	
M34	9mm Zig Zag	42mm	
M35	19mm Zig Zag	30mm	
M70	1" Angle (15 per tube)	23mm	
M72	Square Edge	32mm	
M75	15mm Nosing Self Adhesive	25mm	
M84	Double Edge	8.5mm	
M85	Square Edge	8.5mm	

## FRAMING

**Recessed Frames/ Installations-** Matrex Matwell frames are available in aluminum & brass and are designed to anchor into sand & cement screeds for secure installation. All frames are custom built to customer requirements and irregular shapes are available. Any shape or size can be made.



**Ramped Frames and surface mounted installations-** Internal and external ramp frames are supplied mitred and drilled. Straight cut, undrilled lengths are also available, allowing on site adjustments. Available in aluminium, the surface is ribbed for enhanced grip.

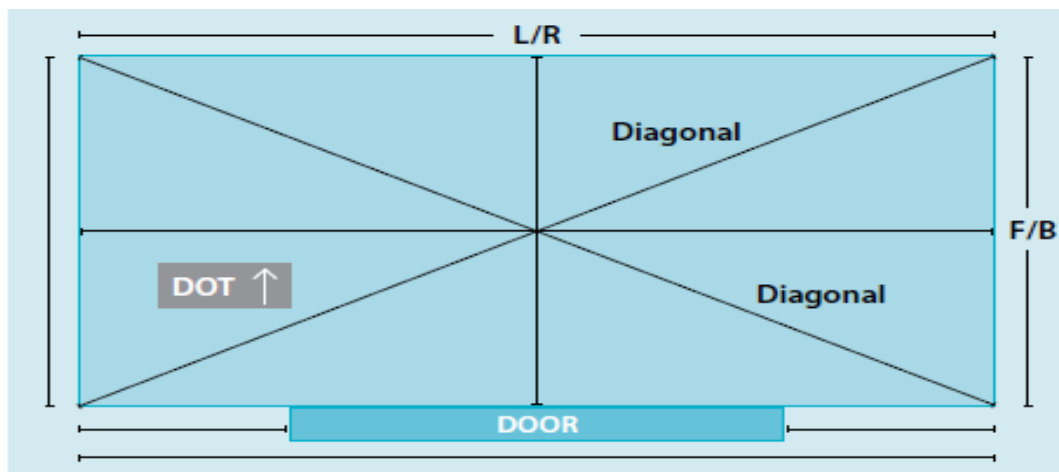
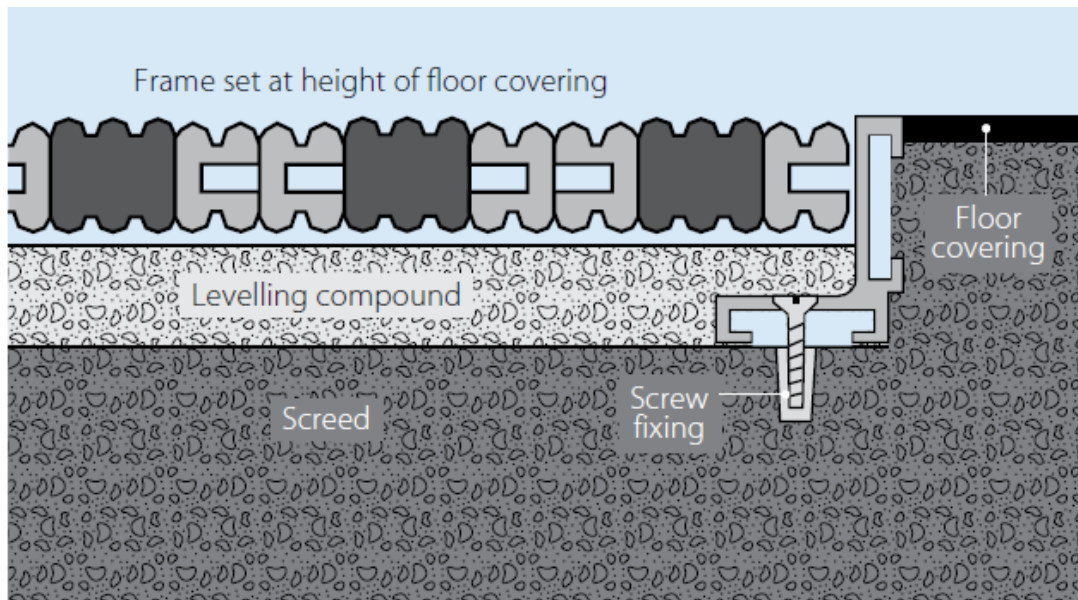




## Matrex site preparation and matwell measuring

Simple, rectangular mats should be easy to measure. For more complex and unusually designed entrance areas, we can provide help with matwell measuring and templating.

It is also important to ensure that the site where the mat is to be installed has been correctly prepared. Matwell subfloors must be of sound construction, dry, smooth and level, clean and free from contamination. For internal mat installations the screed should be flat and level to accommodate the depth of the chosen mat. For external mat installations the screed should again be flat and level to the depth of the frame, and consideration must be given to drainage.



### **Matwell measuring**

*Key DOT = Direction of traffic*