



3

**DISPLAY
GRAPHICS**

**ARTWORK & FILE SAVING
GUIDELINES**

Working with N3

The display professionals

0117 965 5566 | n3dg.com

ON TIME | TO COST | WITH CARE



CONTENTS

File Formats & Specifications	1
How to Create Spot White in Adobe Illustrator	2
How Create a CutContour in Adobe Illustrator	3
How to Setup a Print Ready File with a Spot & Flood White Layer	4
How to Layout a Pop-Up Stand	5
How to Layout a Roller Banner	6
How to Set Artwork for a Jigsaw Puzzle	7
A Guide to Fitting Self Adhesive Wall Coverings	8
Internal & External Examples of Work	9
Internal & External Examples of Work	10
N3 Plant List	11

N3 Display Graphics
N3 House
Crown Way
Warmley
Bristol
BS30 8XJ

For further details:
0117 965 5566 | n3dg.com

File Formats

Preferred formats:

Print ready PDF* (saved as Hi-res)

Illustrator CC*

Photoshop CC

**these file formats produce the best results when printing in large format.*

We can also accept In-Design CC and Quark 2018 files.

What to provide

Please supply your artwork in "Print Ready" PDF format, with bleed and crop marks. Please follow the instructions below to ensure the best reproduction of your artwork.

If the artwork is to be cut/routed to shape, a contour guide must be added to the artwork on its own layer. Please see the section on how to create and name a cut contour.

Font Spec

Please convert all fonts to outlines (uneditable) or supply any used fonts.

Text created in vector based software such as Illustrator will give the best results.

Do Not create text in Photoshop as this will cause the text to pixilate.

Resolution

Please create artwork(s) at no less than 300dpi and at 25% of the final size if the file is to be of a significant size. Artwork upto 1mtr square in size would be ok at 100% (ss) in size.

If the artwork needs to be created smaller then the dpi needs to be created to suit the size.

Colours

Please make sure all colours are CMYK (not RGB). Although we can print from Pantone colours, our printers only print CMYK, so the results will be a best match. If you require a printed proof, please inform us and allow extra production time for your project.

Bleed

All graphics produced require a certain amount of bleed.

As a rule we would normally ask for at least 5mm bleed with a 5mm trim mark offset but due to the nature of some jobs, this may need to be more. If the finished graphic is to be wrap edged to a rigid substrate, then more bleed is required to accommodate for wrapping around the substrate edge. *eg.* A wrapped 10mm panel would need to have 15mm bleed with a 15mm offset.

If in doubt, please call to discuss any of the above before creating your files.

Artwork Overview

Please supply artwork as:-

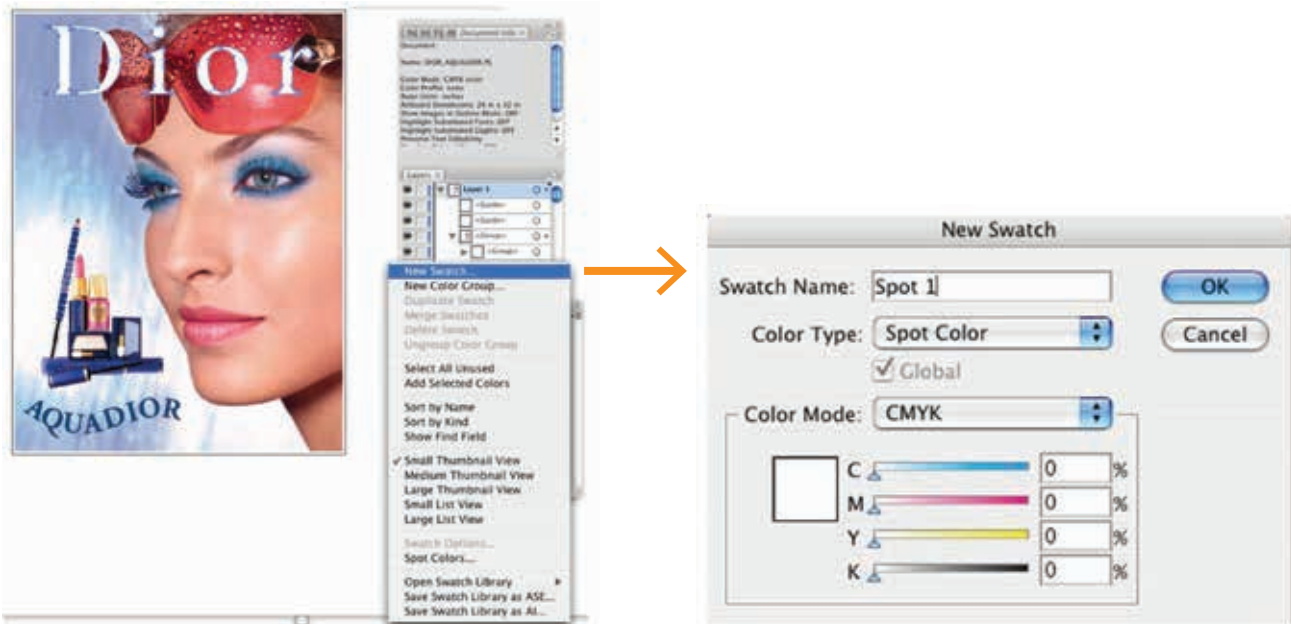
- Print Ready PDF file
- 5mm bleed / 5mm offset
- Crop marks
- CMYK colours (Not RGB)
- Convert ALL fonts to outline
- Images at 300dpi

Submitting Artwork

We can accept files by email up to 20mb and up load via Hightail, WeTransfer or something similar using your contacts email address. Alternatively, you could also supply your artwork on a USB memory stick, a Mac compatible external hard drive, a CD or DVD.

How to create a Spot White in Adobe Illustrator

1. Within the Add Swatch dialog, enter the following information:



New Swatch

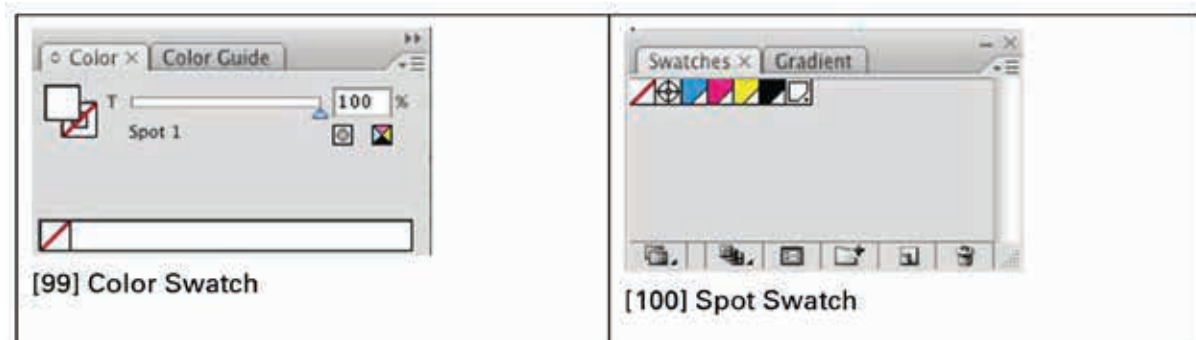
New Swatch Name

Name - Enter the name "Spot 1".

Color Type - Use the drop-down menu to select Spot Color.

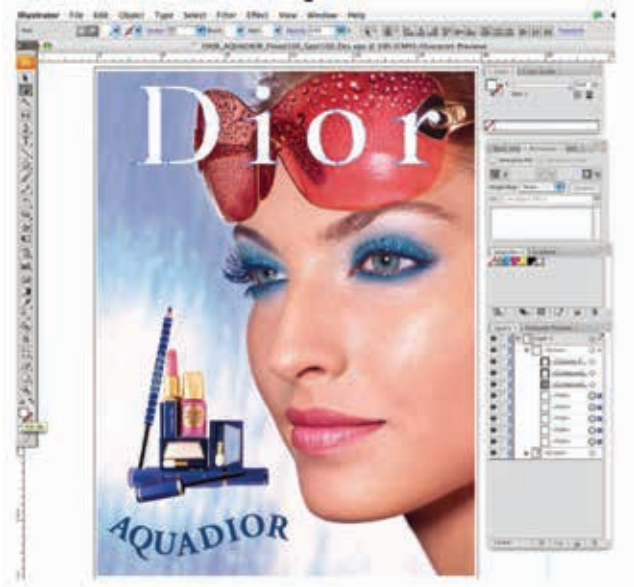
Swatch Color - Use the sliders to adjust the swatch color. It is best to choose a color similar to the spot ink in your printer. Since white can be hard to distinguish you can make this color any value that will help you see the design better.

2. Click OK to save your changes and close the Add Swatch dialog. You should now have a new spot color in your swatch palette, which is indicated with a small dot on bottom right side of swatch.



3. Use the new swatch for any objects or fills which need to be printed with white ink. Clicking on new spot color swatch will make this the default fill color for this document. Select element you would like to be treated with Spot information and choose the fill swatch.
See example overleaf.

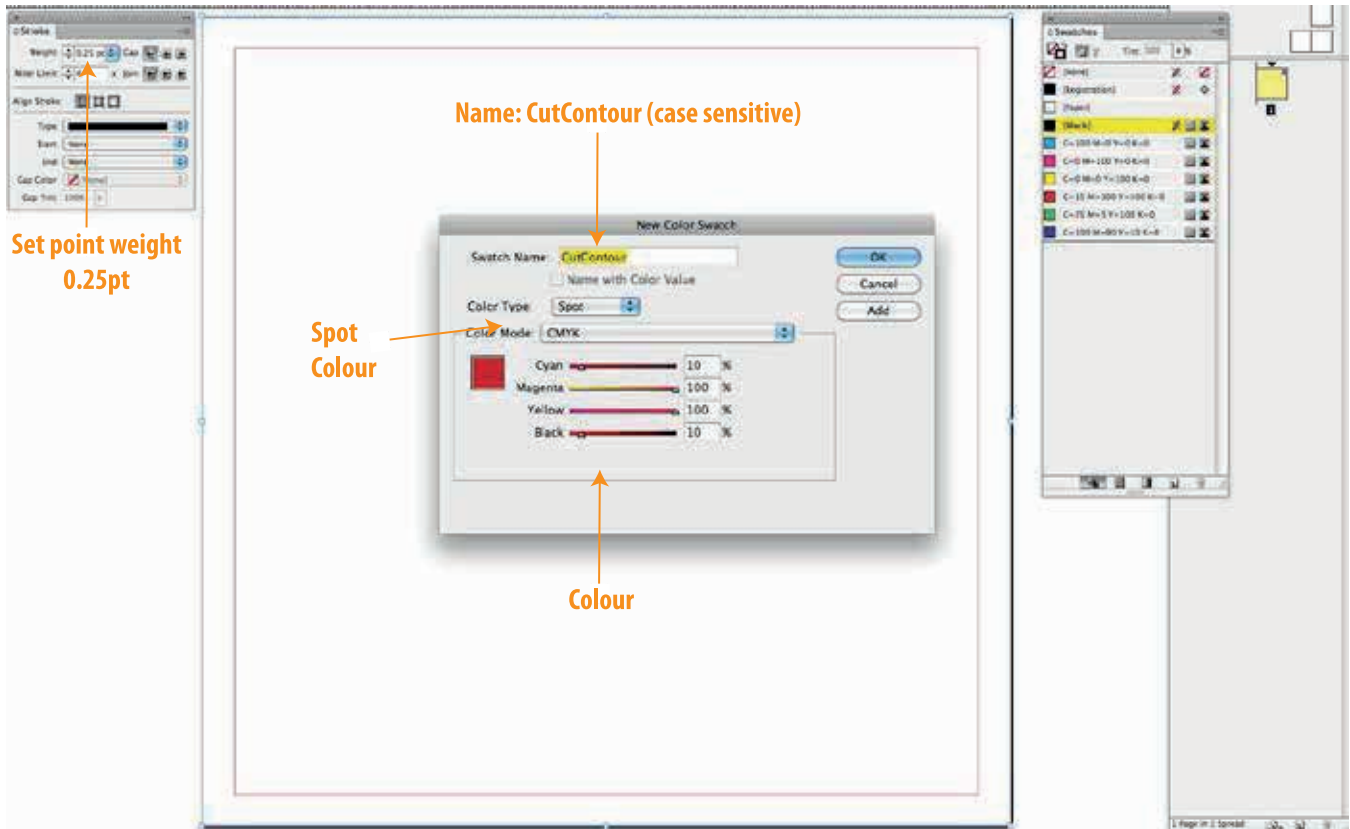
How to create a Spot White in Adobe Illustratorcontinued



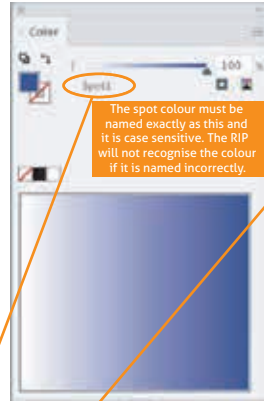
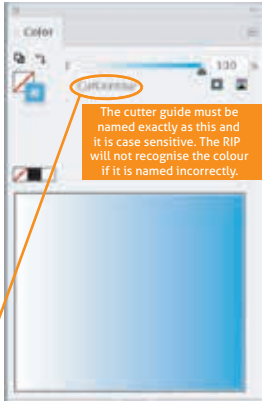
Select Spot Fill

- Once you've configured your source image with white ink as your new spot color, save your work (see page 5 for further information).

How to create a CutContour



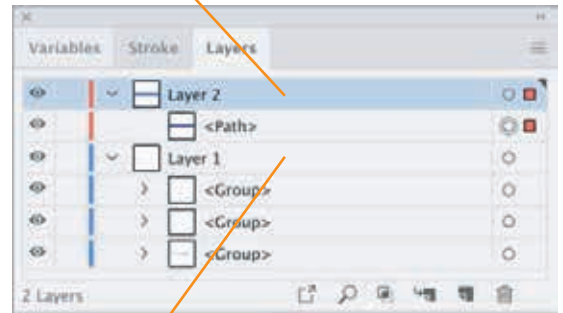
How to set up a PRINT READY file with Spot or Flood White Layer



When you have completed the artwork please set the Spot1 layers attribute to Overprint Fill
Within indesign, this is found under the Window heading and in the sub-folder called 'Output'



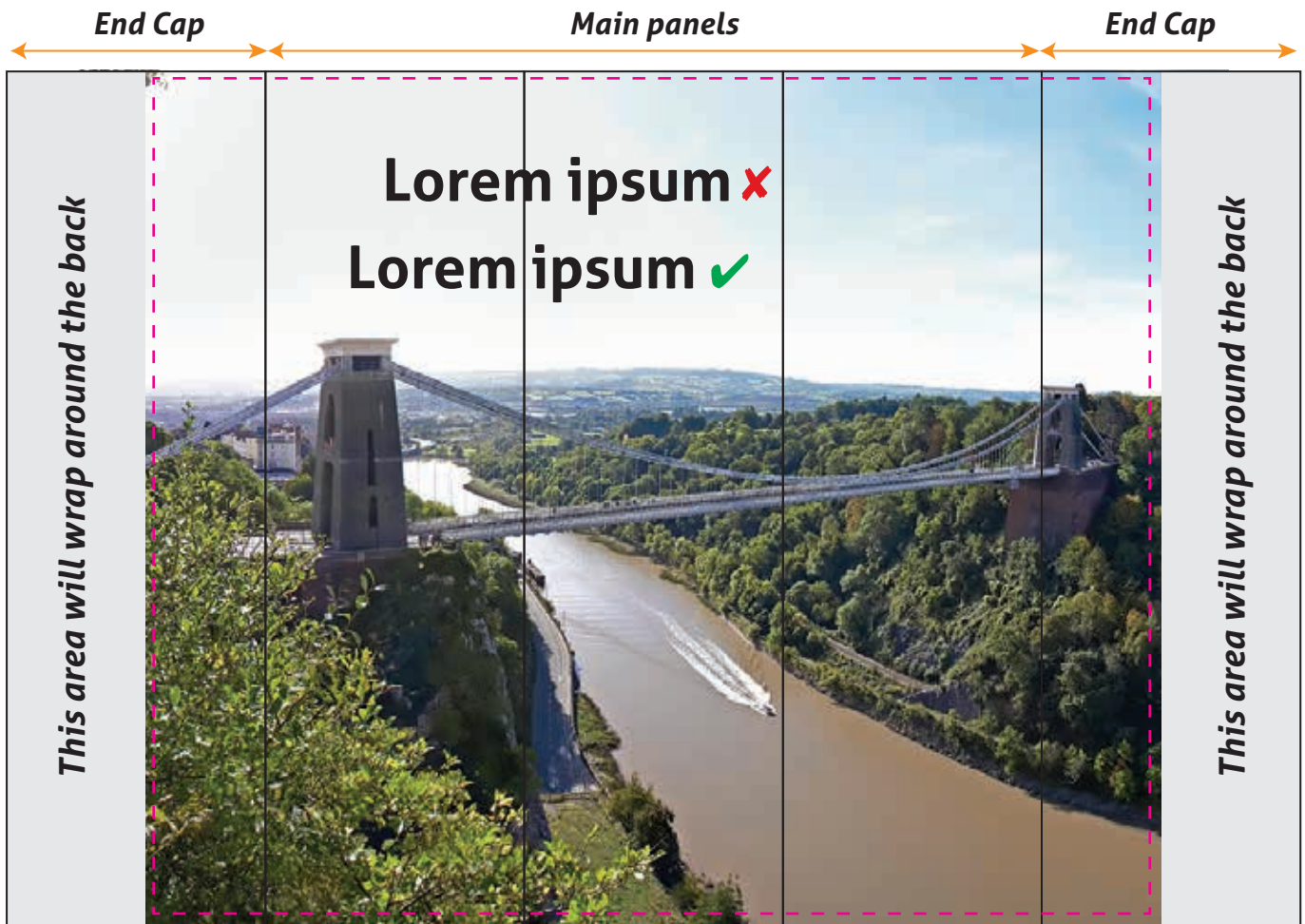
Visual of artwork with the Spot1 layer on



Visual of artwork with the Spot1 layer off

How to layout a Pop-up Stand

Example: Standard curved 3x3 frame 673mm x 2225mm each drop



Keep text and pictures within the MAGENTA dotted lines.

Where possible arrange the text so that it falls between the panel breaks in the pop up - as shown above.

Set up artwork at 25% as a SPREAD and not as individual pages and include 5mm bleed.

Fonts

Please convert all fonts to outlines (uneditable) or supply any used fonts.

Text created in vector based software such as Illustrator will give the best results.

Do Not create text in Photoshop as this will cause the text to pixilate.

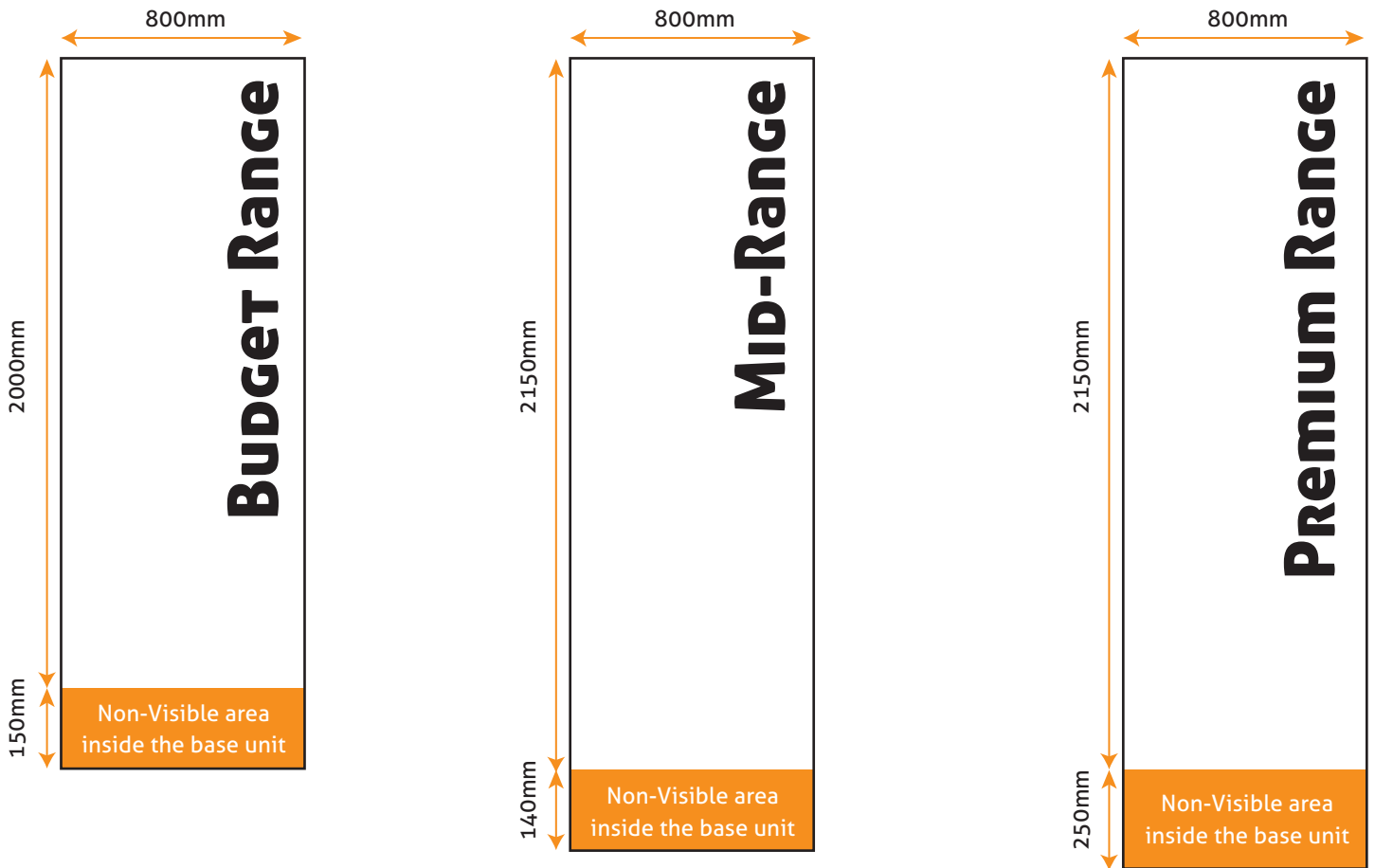
Resolution

Please create artwork at no less than 300dpi @ 25% of the final size.

If the artwork needs to be created smaller then the dpi needs to be increased to suit.

How to layout a Roller Banner

Examples: 800mm wide banners. Other sizes and ranges are available - *Please ask for advice*



Set up artwork at 25% and include 5mm bleed.

Fonts

Please convert all fonts to outlines (uneditable) or supply any used fonts.

Text created in vector based software such as Illustrator will give the best results.

Do Not create text in Photoshop as this will cause the text to pixilate.

Resolution

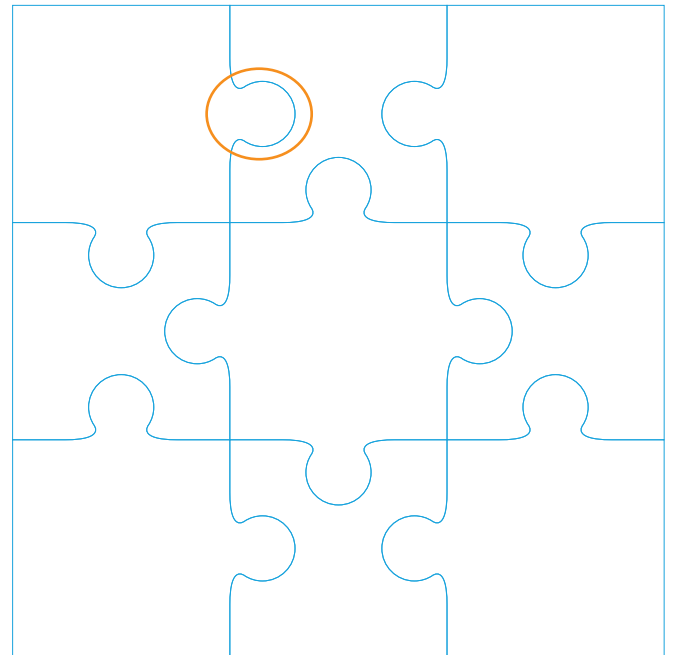
Please create artwork at no less than 300dpi @ 25% of the final size.

If the artwork needs to be created smaller then the dpi needs to be increased to suit.

How to set artwork for a jigsaw puzzle



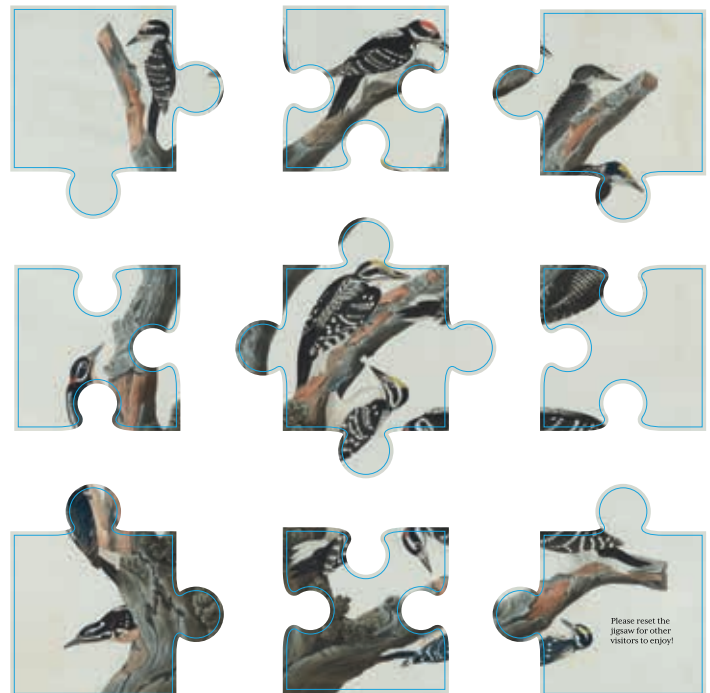
Create the jigsaw image on the artboard at the finished size required.



Create puzzle pieces to the quantity and size required *(These must be individual pieces that sit exactly on top of each other where the pieces interlock).*



Layer the image and cutter guide together, create individual layers for each piece required.



Explode into individual pieces *(including cutter guide & bleed)* by creating with a **minimum** distance of 20mm between each piece.

A Guide and Tips for the Installation of Self Adhesive Wall Coverings

Self adhesive wall coverings will NOT adhere to surfaces that have been covered/painted by using silicone based paints and laminates such as, self-cleaning paints, anti-climb paints, anti-graffiti paints, anti-bacterial paints and surfaces that have a high texture or stippled surface. The highest bonding adhesive wall coverings produced will not stick to these surfaces.

Follow the guidelines below in preparation for a graphic install.

1. A SITE VISIT to assess the surface that the graphics are to be applied to, is most essential.
2. If the surface has been pre-painted, it is important to know what paint has been used when it was painted and if the surface finish is smooth or textured.
3. If the surface is to be re-painted, this must be done **2 weeks** prior to the graphic installation date.
4. Newly plastered walls must be left for a minimum of **4 weeks** prior to the installation date. This is to allow for the surface to be totally dry. These surfaces should then be primed. If the surface is then to be painted you should then also allow for the timings in item 3 above.
5. Ideally, all surfaces/walls should be smooth without any imperfections and should be prepared accordingly. These should then be prepped with a primer. This is even if they have been pre-painted, pre-papered or even left in their raw state, a primer will help adhesion. A good recommended trade primer is Zinseer , "BULLSEYE", but other good primers are available at most DIY stores. **NB. NEVER USE PVA.**

Installation Tips

Splicing is a tidy finishing method on textured/smooth wall graphics. But after long periods gaps may appear because of nominal shrinkage of the media. To prevent this from occurring, the overlapping of the graphics when installing is the method to be used.

Application is recommended between 10°C and 25°C. The surface must be clean, dry and free from condensation. Use a plumb line to mark the vertical drop. Align the graphic, using tape to fix in the final position. Start by fixing the top of the graphic and work down the wall. Use the hinge method to fit the graphic panel right first time.

(Hinge Method = Apply a piece of masking tape across the top of the vinyl graphic thus forming a hinge)

Repositionable products may be lifted and re-applied only on sound sealed surfaces. Do not lift and reapply on surfaces with pigment powder residue on the surface where the adhesive will become easily contaminated. Use a felt squeegee so as not to mark the print. Ensure careful registration by not stretching the film.

If any of the above guidelines are not followed then we cannot be held responsible for any graphic failures or imperfections that may occur.

Internal and External Signage and Branding

Large or small-scale printing and production of graphics for all internal and external needs. From wallpaper coverings to branding, exhibition stands, signage and 3D elements, whatever the challenge we will find the right solution for you. We love printing and production but we don't print and produce stationery, collateral such as business cards and newsletters and flyers. Our specialism is the big scale stuff, that's where we excel. With our in-house digital cutting technology (Zund), we can route (digitally cut paths from vectored files) in plastics, timber and soft metals to create 3D lettering, logos and shapes for internal signage requirements. When you hear us use the phrase "Zund-it-out" you know you're onto a good thing!

There is almost nothing these days that cannot be branded in some way. From small portable items to interior walls and structures. We can advise on design, print and finish in the best methods available.

Banners of all shapes and sizes ranging from PVC Vinyl, Vinyl Mesh, Canvas, Flag weaves, the list goes on. UV-safe full colour print, using UV or Latex ink technologies. Finishes include, hemming, lining, doubled-sided, eyelets, pockets and much more. We have also worked on a range of exhibition graphics for all needs, shapes and sizes where branding is at its upmost. Another branding option commonly used is digitally printed Wallpaper.

We have a full fitting service available on request. We can also consider other options for wall coverings including semi-rigid or flexible sheets. Installations can be provided, if required, as we have fully qualified and dedicated site teams that are up to any challenge.

Hoardings and more.....

Our fully qualified and dedicated site teams are up to the challenge of any installation no matter how big or small. One of our team will come and survey the requirements needed by taking comprehensive measurements and supporting photographs. We will produce a design and provide you with a visual of what it would look like along with recommendations on media and mount and then come and install it for you. We use a wide range of suitable materials and the little touches such as anti-graffiti seal to ensure you get a hoarding that's spot on! Ranging from hoarding, PVC banners to vinyl wall coverings. Once printed our team will install, using steps, scaffold, powered access and ropes, whatever is needed, anywhere in the UK or even overseas!

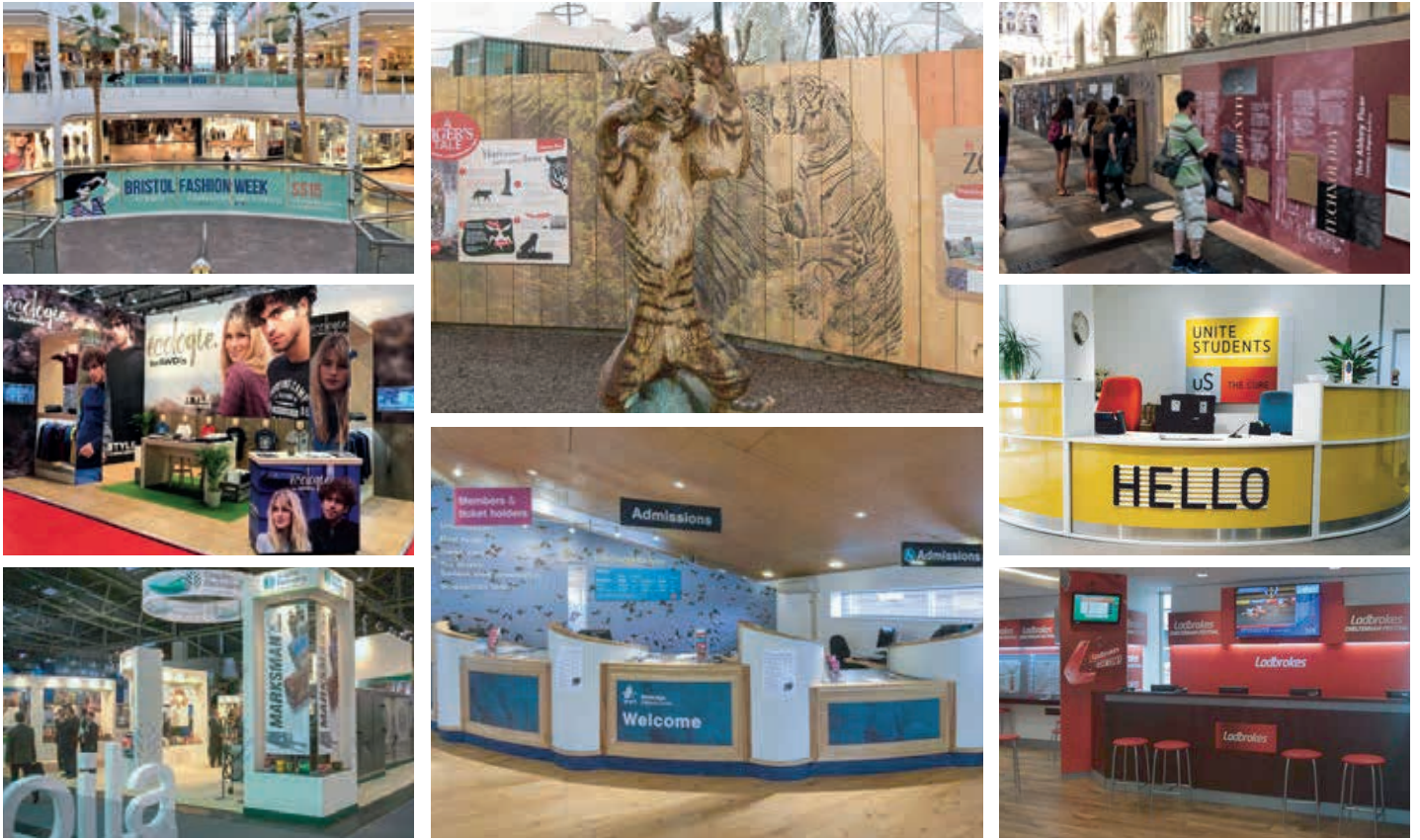
We can also part of full wrap vehicles from Smart cars to lorries or we can just add logos, decals, text and images. We will print, cut and apply for any vehicle, we have even done helicopters! We can also work with any window of any size. Producing stunning display graphics in vinyl with permanent or temporary adhesives whether they be printed or a wide range of coloured vinyls depending on your needs.

Other specialist effective vinyl's are available in a variety makes and finishes.

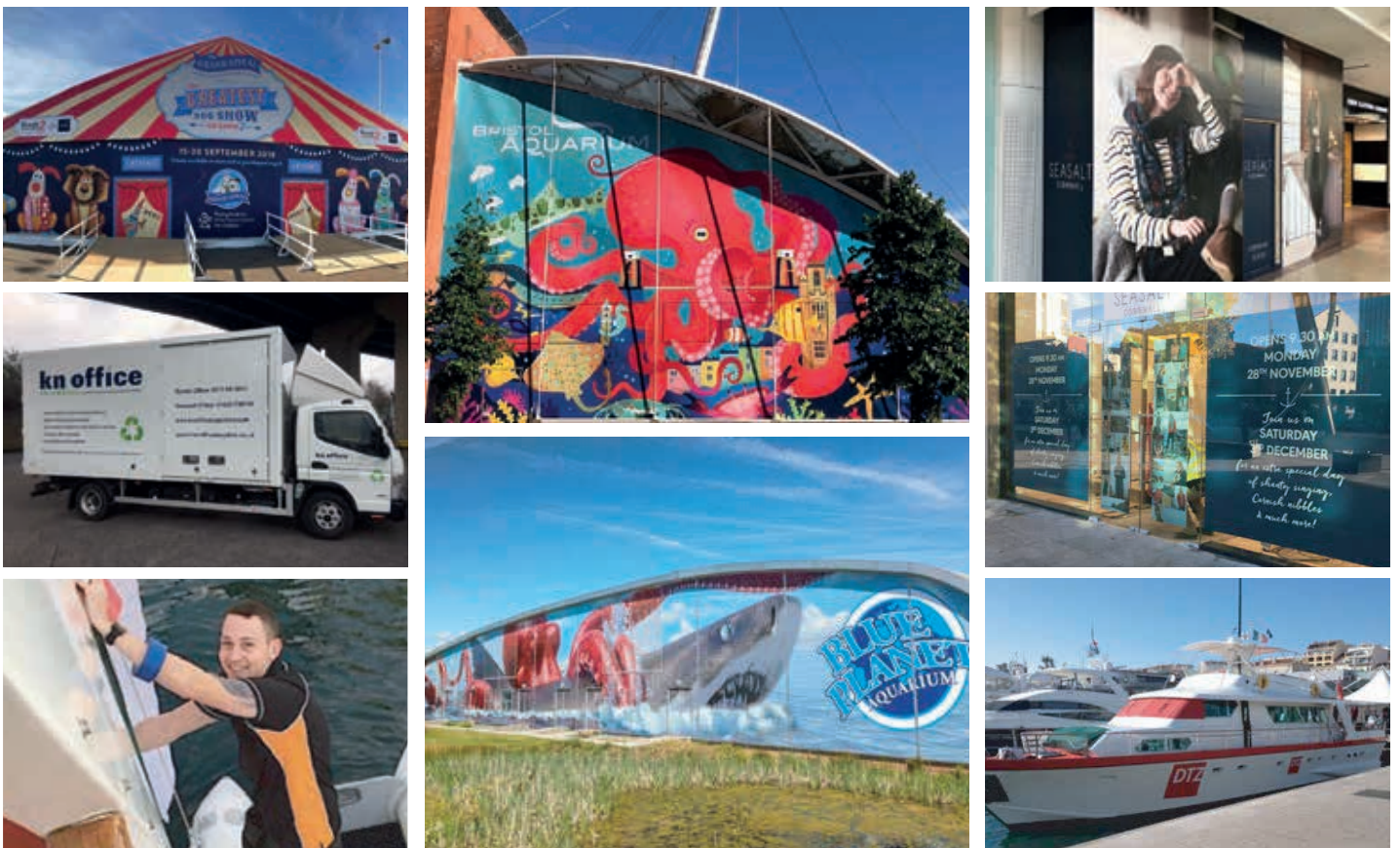
Wallpapers, 3D & Window Graphics.....



Branding, Exhibition & Signage Graphics.....



Site Fits & Vehicle Graphics.....



N3 Display Graphics Plant List

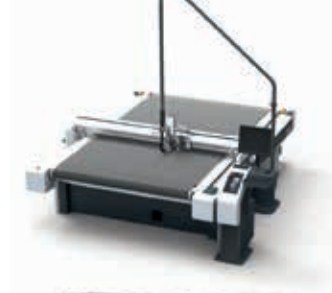
HP Latex R2000

- Direct to media image size 2500mm x 3050
- Up to 50.8mm substrate thickness capabilities
- 2.48m roll to roll imaging width
(length of image is determined by length of media)
- CMYK, LC, LM + White + Optimiser + Overcoat
- Suitable for interior & exterior printing
- Near photographic image quality 1200 x 1200dpi
- Capable of 6pt legible text printing



Zund L2500CV

- Precision cutter/router
- Size - 2500mm x 1800mm
- From kiss cut vinyl up to 50mm thick routed solid substrates (excluding metal)
- Maximum cut/route width 1650mm



HP Designjet Z6200

- Printer width - 60" (1524mm)
- Maximum printable width - 1500mm
- Inks - CR, M, Y, LM, LC, LG, MK, PK
- Resolution - Upto 2400 x 1200dpi



HP Latex L360

- Printer media width - 64" (1625mm)
- Maximum printable width - 1600mm
- Inks - C, M, Y, K, LC, LM & HP Optimizer
- Resolution - Upto 1200 x 1200dpi



HP Latex L2650

- Printer media width - 61" (1550mm)
- Maximum printable width - 1530mm
- Inks - C, M, Y, K, LC, LM
- Resolution - Upto 1200 x 1200dpi



HP Latex L280

- Printer media width - 104" (2640mm)
- Maximum printable width - 2540mm
- Inks - C, M, Y, K, LC, LM
- Resolution - Upto 1200 x 1200dpi



Canon 6000S

- Printer width - 60" (1524mm)
- Maximum printable width - 1500mm
- Inks - C, M, Y, MBK, PC, PM, BK, GY
- Resolution - Upto 2400 x 1200dpi



Summa S160 T

- Media width - 63" (1600mm)
- Cuttingwidth - 62" (1580mm)
- OPOS X contour cutting alignment
- Auto cut off knife

