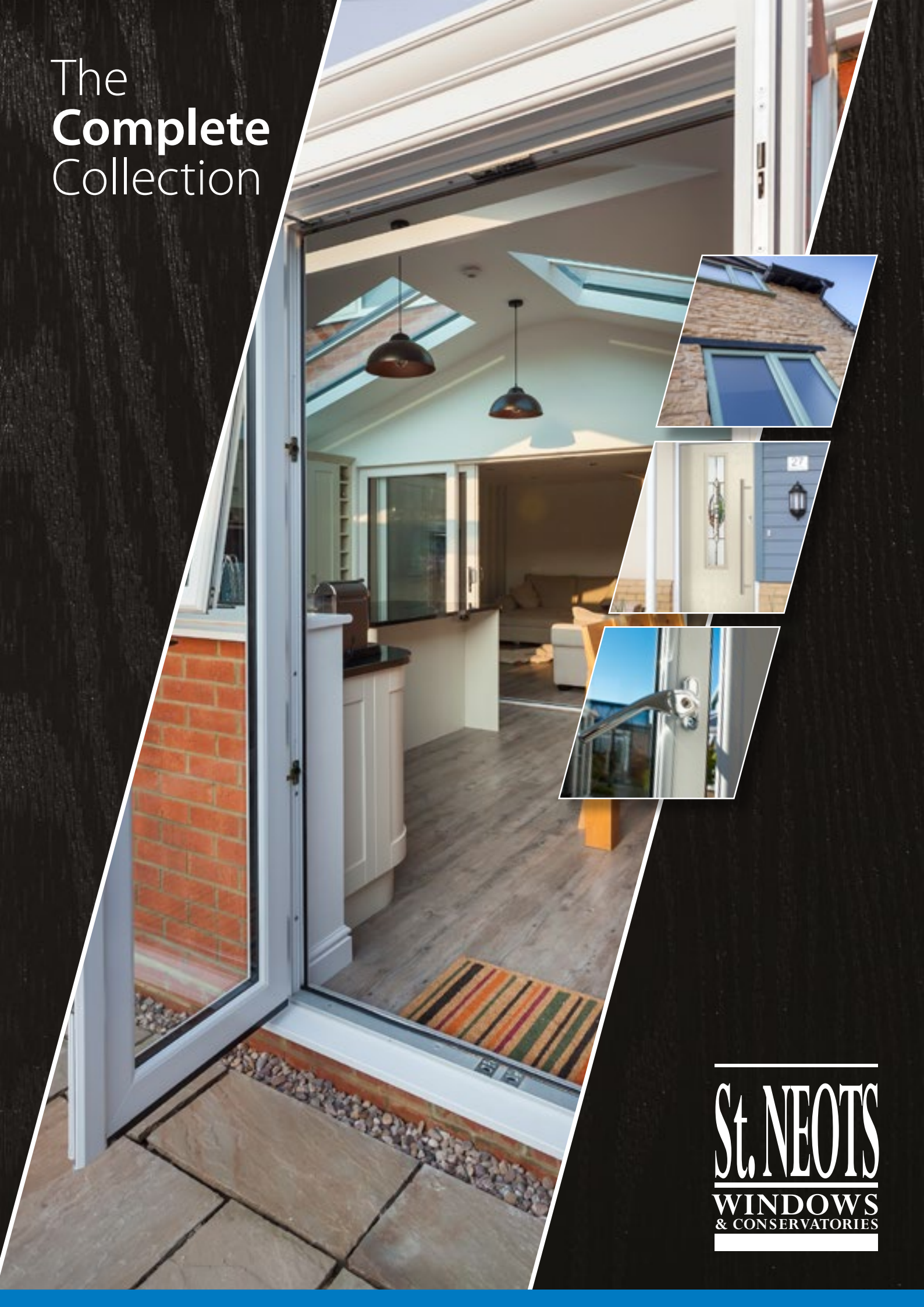


The
Complete
Collection



St. NEOTS
WINDOWS
& CONSERVATORIES

WINDOWS AND DOORS, MADE IN AND FOR, THE UK

Combining cutting-edge innovation and performance with elegant design and effortless style, our extensive range of PVC-U windows and doors bringing form and functionality to your home.

Offering the highest levels of security and energy efficiency, technology meets slim sight-lines and an extensive choice of finish to suit your home – each designed and manufactured in the UK.



THE COMPLETE COLLECTION

- 4-5 Making your home warmer
- 6-7 What makes our windows and doors energy efficient?
- 8-11 Making your home more secure
- 12 A choice of style
- 13 Subtlety or Statement?

WINDOWS

- 14 Windows
- 15 Technical overview
- 16-17 Choosing the right style
- 18-19 Hardware
- 20-21 Window colours
- 22-23 Window energy efficiency
- 24 Traditional and Performance
- 25 Flush Casement Technical Overview
- 26-27 Flush Casement

FRONT AND BACK DOORS

- 28 PVC-U front and back doors
- 29 Technical overview
- 30-31 PVC-U door styles
- 32 Finish, glass and hardware options
- 33 Obscure glass options
- 34 Hardware options
- 35 Colour options

COMPOSITE DOORS

- 36 Composite doors
- 37 Technical overview
- 38-39 Composite door styles
- 41 Glass options
- 42-43 Colour options
- 44-45 Kubu Smart door

SLIDING PATIO, FRENCH & BI-FOLDING DOORS

- 46 Sliding patio, French & bi-folding doors
- 47 Technical overview
- 48-49 Sliding patio doors
- 50 French doors
- 51 Technical overview
- 52-53 Aluminium bi-fold doors
- 54 Security

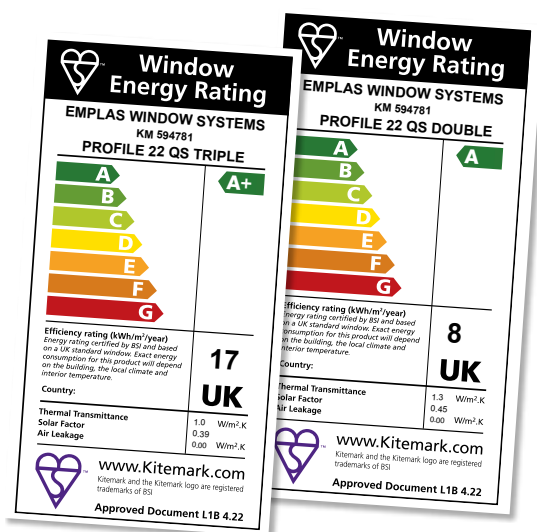


MAKING YOUR HOME WARMER

Windows and doors can account for up to 25 per cent of the total energy lost from your home, so your new windows, doors, conservatory or glazed extension need to deliver – not just look great.

All of our ranges are manufactured to the highest standards, meeting and far exceeding all current regulations in the UK for window and door energy efficiency with Window Energy Ratings of up to A+ and U-values as low as 1.0W/m²K.

Whatever your choice of style or finish, it means that your new windows and doors are going to keep your home warm and secure for years to come.



Your guide to Window Energy Ratings (WERs)

Whether you're thinking about buying new double or triple-glazed windows or doors you need to know how they're going to perform.

Windows and doors can look the same, but deliver wildly different levels of performance.

Window Energy Ratings provide a simple 'traffic light system' measure of performance. This includes a combined measure of how good it is at:

- 1 - Keeping draughts out,
 - 2 - The warmth that it adds to a property through solar-gain,
- and
- 3 - How effective it is at stopping heat loss - something measured in construction as a U-value.

A similar scheme using different calculations also exists for doors (DERs).



Windows and doors can account for up to 25 per cent of the total energy lost from your home

A young girl with long brown hair is looking out a window. Her hands are resting on the white windowsill. The window has a reflection of her face. The background is a soft-focus view of the outdoors.

Keep your home warm
and cosy on even the
coldest of days

WHAT MAKES OUR WINDOWS AND DOORS ENERGY EFFICIENT?

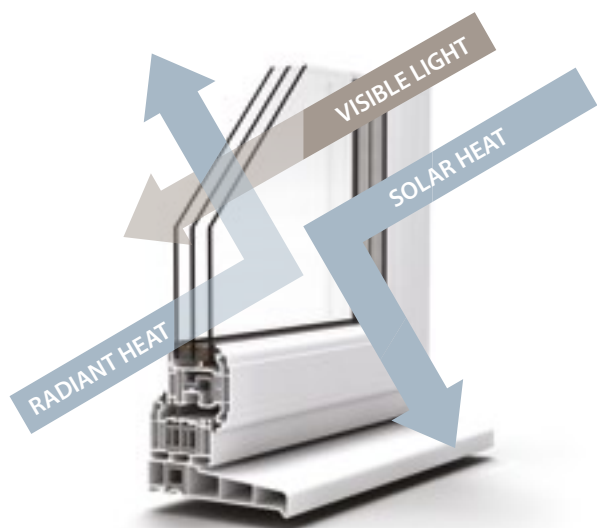


Glass

Glass is the single most important factor in defining the energy performance of your new windows and doors. Our glass supplier, is at the leading edge of innovation. With a proud reputation of being a market leader globally in glass sealed unit manufacturing.

All of the double and triple-glazed glass units that we supply use smart low-e coatings on glass - a one-way door for trapping and holding energy.

We also use warm-edge spacer bars, which separate the sheets of glass in double and triple-glazed units to put 'space' between the cold air outside and warm air inside. This cavity is filled with argon gas. It's completely inert in the environment and you can't see it but because it's denser than air. It creates a highly effective insulating barrier, helping to keep your home warm and cosy on even the coldest of days.



Windows, doors and glazed extensions

Our PVC-U windows and entrance doors are manufactured in the UK's leading Profile 22 Optima system, with over £18 million of investment from Profile 22 and our manufacturing partner Emplas Window Systems, you can be confident your windows and doors are the most advanced in the market today.

Our frames feature an internal 'honeycomb' multi-chamber system, which create a series of thermal barriers between the warm air inside your home and cold air outside of it (see the window technical overview on page 15).

PVC-U and composite doors

The same principles are applied in PVC-U panel and composite front and back doors. These use a tough high density polyurethane foam core in the leaf to provide exceptional levels of insulation.

The exact energy efficiency of your new door will depend on a number of different factors including the style of door and glass you choose but all feature our warm core foam technology.

This maximises the thermal efficiency of your new composite door, making it up to almost 20 per cent more energy efficient than a traditional solid timber door.

Our solid roof and roof glass options provide only the latest technology to ensure the lowest u-values and the greatest solar reflections options. This keeps the room warmer in the winter and colder in the summer and using your energy to heat and cool accordingly.

Window energy efficiency

1. Low-e coatings on glass create a thermal barrier, preventing heat transfer.
2. Warm-edge spacers used to make up glazing units create space between warm air inside and cold air outside.
3. Gap created by the spacer bar is filled with inert high density gas. Denser than air, it provides an additional barrier to heat transfer.
4. 'Honey-comb' chambers inside PVC-U windows create multiple thermal-breaks.
5. Thermally efficient, recycled composite material reinforcements used in place of energy inefficient steel reinforcements, further improve energy efficiency. (please note full steel may be required in some applications for structural reasons).

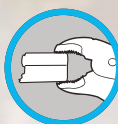
MAKING YOUR HOME MORE SECURE

Windows and doors are potential 'weak points' in home security so choosing designs with the right combination of security features is important in protecting your home from potential intruders.

All of our windows and doors feature the latest multi-point locking systems and robust hardware, delivering the highest levels of window and door security.

For added peace of mind, we also offer a number of enhanced security options, to upgrade your windows and doors to a level endorsed by the UK Police's, Secured by Design Scheme through our supplier Emplas, for accredited products please see: (www.securedbydesign.com/member-companies/sbd-members?view=companydetail&sbdoldcompanyid=188) because your security and that of your home and family, matters.

BREAK SECURE



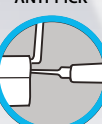
ANTI-BUMP



ANTI-DRILL



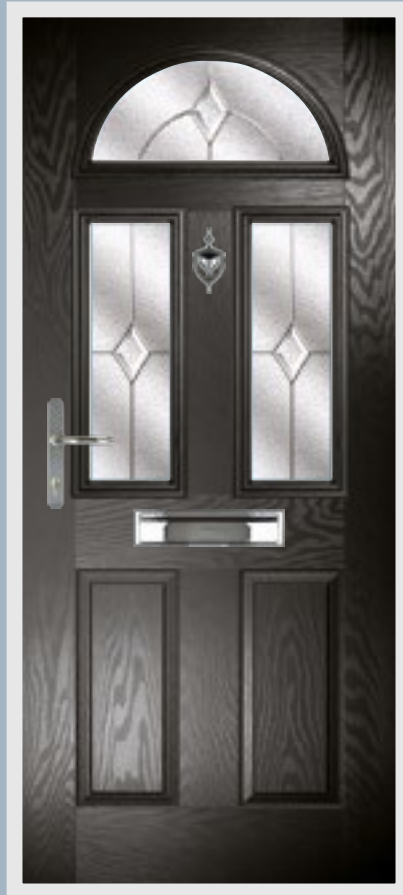
ANTI-PICK



COMPOSITE DOORS

Our front and back door composite door ranges are supplied to the highest security levels and meet Secured by Design standards through our supplier Emplas, for accredited products please see:

www.securedbydesign.com/member-companies/sbd-members?view=companydetail&sbdoldcompanyid=188
(when supplied with laminated glass and security letterplate).



Meets and exceeds all current building standards including PAS24



Be sure it's secure



Robust handles manufactured from either stainless steel, zinc or aluminium



Toughened laminated glass energy efficient units provide increased resistance to attack, if selected. All glazing is supplied as Energy PLUS, incorporating 'Low E' glass and Argon filled



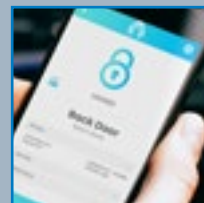
Break secure, anti-bump anti-drill and anti-pick cylinder



High security multi-point locking with inbuilt smart technology as standard



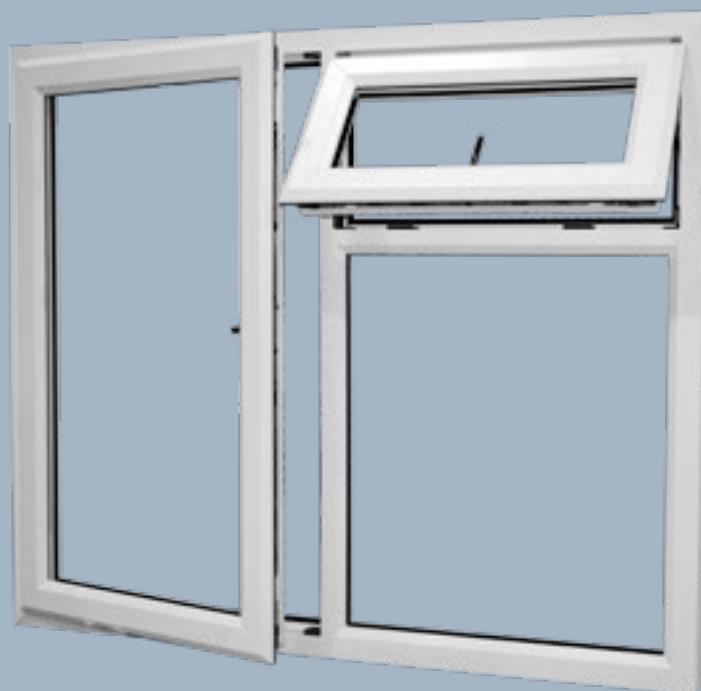
Recycled composite material used for strength, increased security and insulation purposes



Kubu Equipped Doors doors as standard. Kubu uses smart and simple technology to monitor your lock status in real time

WINDOWS

Our windows feature the latest innovation in attack resistant and robust PVC-U frames and hardware.



Up to 6 point locking technology with two locking points per shootbolt (if selected) and double cam locking centrally



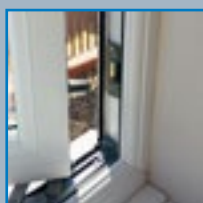
Developed to withstand even the most determined intruder. Tested by an independent test laboratory to over 3,500N force



Patented docking system prevents sideways movement of the shootbolt when under attack (if selected)



Heavy duty bolt has up to 300 per cent greater contact area against competitor shoot-bolts (if selected)



Resistant to salt spray (BSEN1670) and cycle tested over 50,000 times for ultimate long-term performance



Meets and exceeds all current building standards including PAS24 (when dog bolts and laminated glass are selected where appropriate)



A CHOICE OF STYLE AND FINISH AS INDIVIDUAL AS YOUR PROPERTY

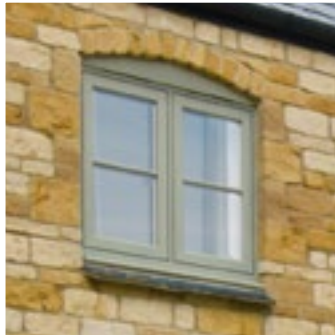
Your choice of window and door design, will help to define the character of your property. From country cottage and period features of traditional box sash windows, to bold statements and contemporary urban designs, all of our windows and doors can be tailored to perfectly complement your very own 'grand design'.

Window styles

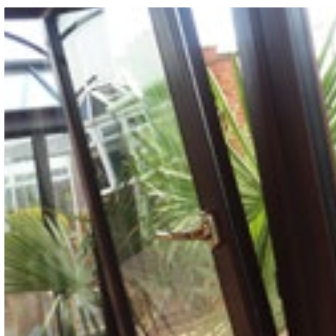
Our windows are manufactured Profile 22's new Optima PVC-U profiles - a classically sculptured (QS), a simpler, chamfered (QC) frame design or 'heritage' flush sash timber replacement. Each offering the highest levels of energy efficiency and slim stylish sightlines. Whatever your choice for your property you can be sure your new windows will be secure, energy efficient and low maintenance.



Casement



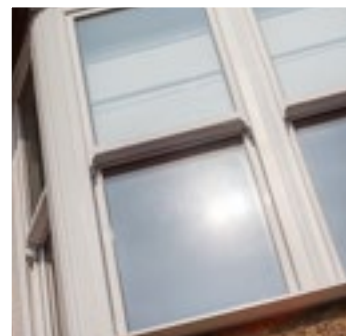
Flush casement



Tilt-and-Turn



Fully Reversible



Vertical Sliding Sash Windows

SUBTLETY OR STATEMENT?

COLOUR AND FINISH CHOICES THAT ARE RIGHT FOR YOUR HOME

Colour will give shape and definition to your choice of window or door. Our window and door frames are available in an extensive palette of colours and woodgrain finishes that bring huge flexibility to your choice of window or door design.

Our durable foiled finishes are applied as part of the manufacturing process and come with a full 10-year guarantee.

It means that whatever the character of your property, you can choose a low maintenance foiled finish that's right for your home from subtle heritage colours to bold greys, classic woodgrains or sophisticated and understated white.

All colours are a visual representation only.

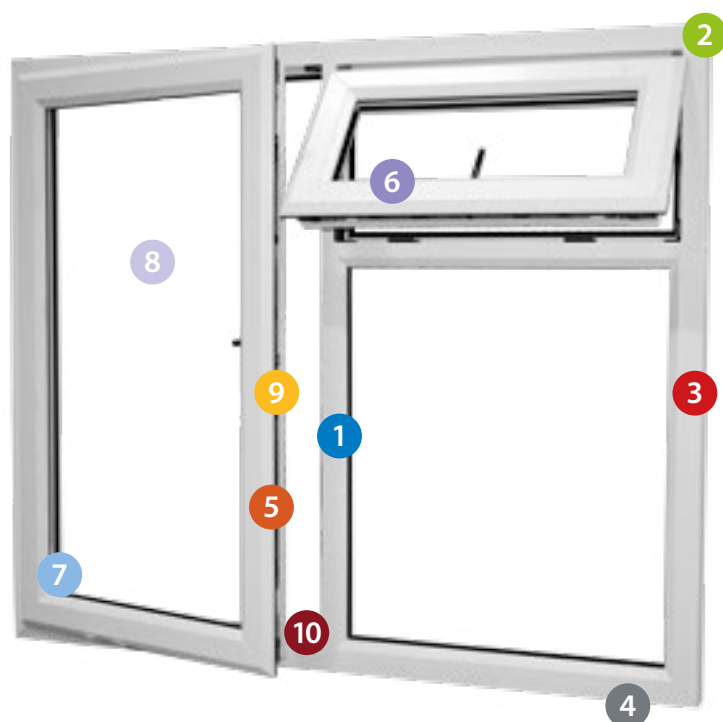
WINDOWS

Good windows start with high performance window systems, robust hardware and the latest innovations in glass technology but it's the vision, which you have for your home, which turns 'good' into 'great'.

We'll guide you through the options to help make that vision a reality. Double or triple-glazed, box sash or casement, foiled or white – our windows can be designed to define or to complement the unique character of your home and just as importantly, your individual aspirations for it.

WINDOWS – TECHNICAL OVERVIEW

Our window ranges are the product of over £18 million of investment in energy efficiency, security and system development.



Optima™



- 1** Slim sightline window frame featuring sculptured, chamfered and flush framing options plus extensive choice of colour and finish options
- 2** Thermally efficient outer frame featuring six 'honeycomb' chambers and five chamber sash
- 3** Energy efficient recycled composite material or full steel reinforcement options
- 4** Deeper drainage channels carry water away quickly improving weather performance
- 5** 10mm cover on weather seals for ultimate weather tightness
- 6** Specially designed hardware fixing points and local thickening of frame walls to improve screw retention improving security
- 7** High security internal glazing system
- 8** Energy efficient double and triple-glazed glazing options featuring warm-edge spacers and low-e coatings to achieve WERs of up to A+ and U-values as low as 1.0W/m2K
- 9** Up to 6 point locking technology with two locking points per shootbolt and double cam locking centrally. Patented docking system prevents sideways movement of the shootbolt when under attack
- 10** Meets and exceeds all current building standards including PAS24 (PAS 24 requires dogbolts and laminated glass where applicable)



CHOOSING THE RIGHT STYLE OF WINDOW FOR YOUR HOME

Every home is different, which is why we offer a wide range of window styles and colour options. Making the right choice is about working out not only the best fit to the character of your property but also thinking about how you want to live in it.

Choosing a window style is the starting point. The handles or any colour or finishes you then add, will further define the appearance of not just your windows but your home as a whole. We'll work with you to help you make the perfect choice.

FRAME DETAILING

Our casement, tilt-and-turn and fully reversible windows are available in a choice of sculptured, chamfered or flush frame systems.



SCULPTURED DETAIL

Sculptured detailing offers a more traditional decorative finish replicating the curves found on traditional timber windows.



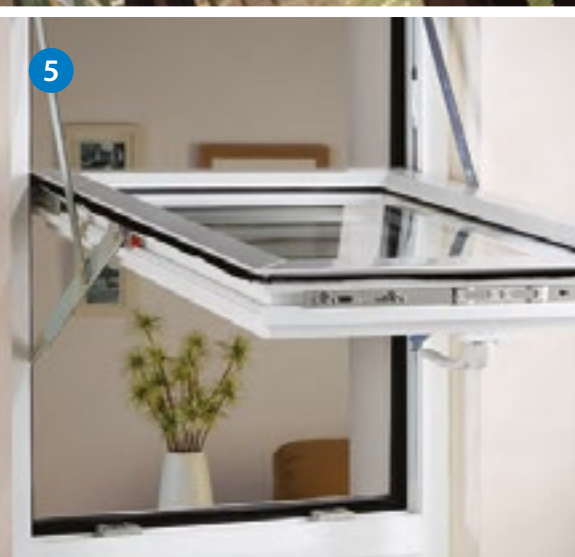
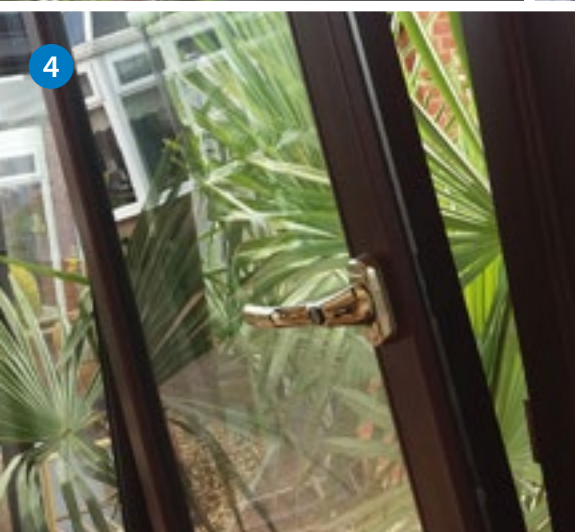
CHAMFERED DETAIL

Chamfered detailing features a more contemporary and simpler bevelled edge, with straight sightlines.



FLUSH SASH DETAIL

Our flush-frame windows feature a dedicated slim-line window sash which sits flush with the outer frame. This recreates the aesthetic of a period casement timber window in a low maintenance and energy efficient option.



1 CLASSIC CASEMENT

Timeless and with classic appeal, our range of beautiful and flexible casement windows can be designed to complement period properties or contemporary homes delivering perfectly balanced sightlines.

2 FRENCH CASEMENT

Featuring the same classic styling, our casements are designed so that they don't require a central mullion (upright). Opened, it means views are uninterrupted. With no fixed mullion, you can be confident our windows comply with the fire regulations for escape.

3 FLUSH CASEMENT

Outward opening top hung casement windows are a contemporary British design.

4 TILT-AND-TURN

The ideal solution where external access is an issue, tilt-and-turn windows can be swung into a room for cleaning. Streamlined and contemporary, they're great for wide variety of properties.

5 FULLY REVERSIBLE

Like tilt-and-turn windows, fully-reversible windows are great where access for cleaning can be a problem rotating 180°. This advanced solution is also available in a flush casement finish.

6 VERTICAL SLIDING SASH WINDOWS

The classic choice for Georgian, Victorian and Edwardian properties, our box sash windows bring 21st century innovation and energy efficient to period styling.

7 GEORGIAN ASTRAGAL BARS

Our georgian astragal bar range allows you to bring additional period character your design. Running horizontally or vertically across the glazed units of your casement or sliding sash windows, astragal and georgian bars replicate the appearance of the jointing between panes of glass on a traditional Georgian window.

WINDOW HARDWARE AND FURNITURE

High Security Locking and Weather-tightness

The seal formed between the fixed window frame and opening sash is a critical element in door security and weather-tightness.

Our windows feature up to 6 point locking technology with two locking points per shootbolt and double cam locking centrally. As well as locking the window along the sash, our heavy duty multi-point locking system provides a dedicated fix in each corner.

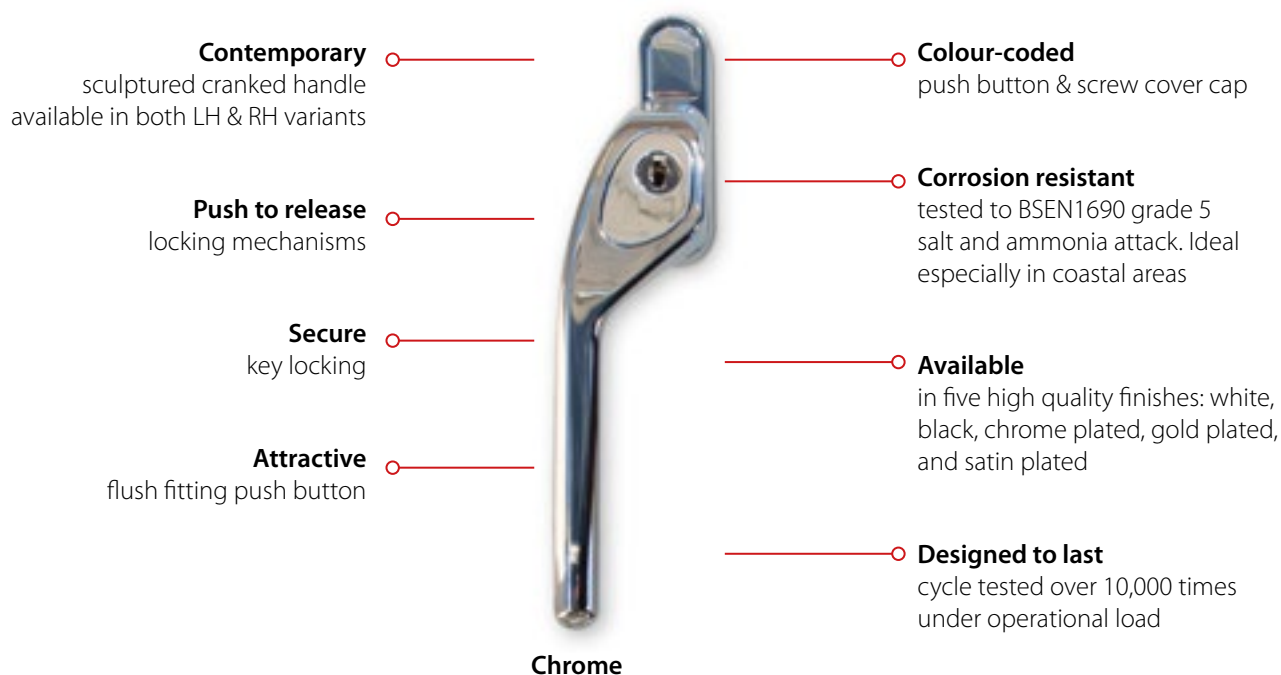
This makes it far harder for intruders to force it open but also improves the weather seal. Our patented docking system also prevents the sideways movement of the locking keep when under attack from intruders.

Independently tested to 3kN* force - in the PAS24 Security test – it gives you absolute peace of mind that every element of hardware design is optimized to keep intruders out.

* Our windows withstood a load of 6kN - double the test standard. A copy of this letter confirming the test results can be supplied upon request.

Our range of elegant and ergonomically designed handles bring form to functionality. Designed to fit naturally into the user's hand, they exude quality to the touch.

Beautifully crafted, our Signature™ hardware range is available in premium quality white and black powder coated finishes; chrome plated; and gold and satin electroplate finishes.



Satin



Gold



White



Black





WINDOW COLOUR AND WOOD-GRAIN FINISHES

Colour is a powerful design tool.



It can make your windows and doors seamlessly blend into the materials that surround them, delivering a subtle finish, which suggests that they have always been there.

It can drive bold statement designs which exude contemporary sophistication.

Or colour can sit anywhere in between – the choice is yours.

Our extensive colour and finish range from traditional woodgrain options, to contemporary greys and subtle creams and whites brings incredible design flexibility to low maintenance and energy efficient PVC-U windows and doors.

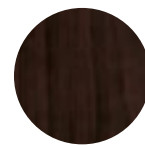
All colours are a visual representation only.



White



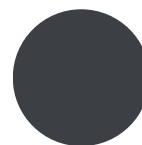
Cream



Rosewood



Light Oak



Anthracite Grey



Black Brown

*Colours above show our standard colour range available for windows. Additional colours available upon request see page 35



THE CHOICE IS YOURS

Our extensive colour and finish range from traditional woodgrain options, to contemporary greys and subtle creams and whites brings incredible design flexibility to low maintenance and energy efficient PVC-U windows and doors.





Optima[™]
BY PROFILE 22 SYSTEMS

WINDOW ENERGY EFFICIENCY

Building Regulations may dictate minimum standards but our energy efficient double and triple-glazed windows go far beyond, keeping you warmer and saving you money, year round.

Achieving Window Energy Ratings of up to A+ and U-values as low as 1.0W/m²K, our windows are designed to be energy efficient from the inside out.



ENERGY EFFICIENT FRAMES

Our window frames feature five thermally efficient internal chambers in the sash and six in the outer frame. This thermally efficient 'honey-comb' creates a series of barriers between the heat inside your home and cold air outside.

We enhance frame energy efficiency even further whenever possible, by swapping highly conductive steel for far more thermally efficient and ultra-strong recycled composite material reinforcements.

HIGH PERFORMANCE GLAZING UNITS

All of the double and triple-glazed glass units that we supply, are via our glazing partner. We use smart low-e coatings on our glass - a one-way door for trapping and holding energy.

We also use warm-edge spacer bars which separate the sheets of glass in double and triple-glazed units to put 'space' between the cold air outside and warm air inside, insulating it in the process.

You can therefore be assured of advanced thermal efficiency in a beautifully crafted and low maintenance window.



TYPICAL WERS

Achieves A with double glazing*
A+ achievable with triple glazing**

- * Except Flush Casement Window
- ** Except Flush Casement Window and Vertical Sliding Sash.
Standard 36mm triple achieves A+ Energy rating.

TYPICAL U-VALUES

Achieves 1.3 W/m²K with double glazing*
Achieves as low 1.0 W/m²K with triple glazing**

- * 1.3 W/m²K on flush casement window
- ** Triple Glazing not available on Flush Casement Window or Vertical Sliding Sash Window.



Tradition and performance

If PVC-U had been available to builders in the past, they would have used it. No one disputes the beauty of timber, but it has drawbacks. In the wet, it can swell. In dry conditions, it can shrink. It can warp or twist and whatever else you do, you'll always have to find the time to take good care of it. Imagine never having to paint a window. Imagine never having a window already welded shut with layers of paint.

PVC-U windows are tough, durable and insulating. They need hardly any maintenance. They open easily and when they're closed, they are secure. Our Optima Flush windows replicate the appearance of traditional wooden frames: the delicate curves, detailing and trims, even the colours, grain and texture, but there's more on offer than good looks. Multi-chambered frames are secure and strong, advanced seals block the weather, high-specification glazing provides thermal and acoustic insulation. We don't believe in 'either/or' – we know you can have traditional style and 21st century performance.

Lines and proportions

We've thought of it all: the right-sized frame with the right-sized window, and transoms, mullions and dummy sashes that create the authentic appearance and lines of a traditional flush casement. The shape is chamfered on the outside to shed the rain, and for indoors we incorporate a sculptured bead for that classical feel.



Chamfered style externally



Sculptured Bead internally

FLUSH CASEMENT TECHNICAL OVERVIEW



- 1 Slim sightline window frame, with extensive choice of colour and finish options
- 2 Thermally efficient outer frame featuring six 'honeycomb' chambers and five chamber sash
- 3 Energy efficient recycled composite material or full steel reinforcement options
- 4 Deeper drainage channels carry water away quickly improving weather performance
- 5 Specially designed hardware fixing points and local thickening of frame walls to improve screw retention improving security
- 6 High security internal glazing system
- 7 Energy efficient double glazed options featuring warm-edge spacers and low-e coatings.
- 8 Up to 6 point locking technology with two locking points per shootbolt and double cam locking centrally. Patented docking system prevents sideways movement of the shootbolt when under attack
- 9 Meets and exceeds all current building standards including PAS24





CONSERVING & ADVANCING

Our PVC-U Flush Casement windows are virtually indistinguishable from timber but have two major advantages. Firstly, they are more affordable and can make a huge improvement to the comfort and appearance of a property where timber alternatives may be prohibitively expensive.

Secondly, their insulating qualities, easy maintenance and recyclability make them an environmentally-friendly alternative.

Our sightlines are spot on. Our Flush Casements have perfectly balanced dummy sashes there is a deep bottom rail available. There is a great selection of period colours and wood-effect finishes, including a timber-grained, white or cream painted effect, which avoids potential unease about the smooth surface of PVC-U.



PVC-U PANEL FRONT AND BACK DOORS

Our PVC-U panel infill front and back doors provide a high security, low maintenance and robust option, that's fully geared up to survive every day family life!

They won't warp, or twist and require only the minimum of maintenance, while a high security multi-point locking mechanism and anti-bump, pick and drill cylinder locks mean that they meet and exceed PAS24, the Building Regulations Security standard.

With a wide selection of decorative glass options, colour and finish choices, you can design your perfect door.

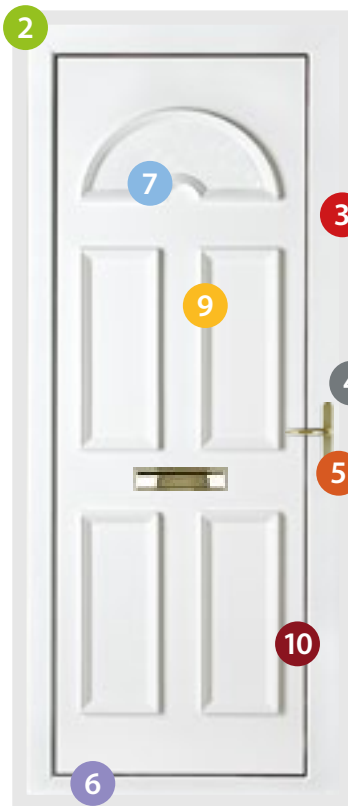
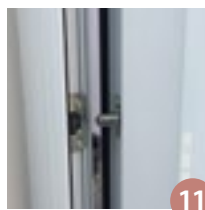
PVC-U PANEL FRONT AND BACK DOORS – TECHNICAL OVERVIEW

Our PVC-U infill panel doors, like our composite front and back doors (see pages 38-39) employ cutting-edge innovation to keep your home warm, secure and weathertight.

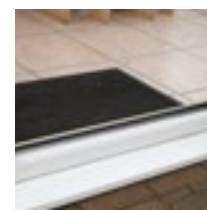


Be sure it's secure

All our PVC-U doors are Kubu equipped as standard, see page 44.



LOW THRESHOLD



STANDARD PVC THRESHOLD



- 1** Robust vacuum and pressure bonded panel, featuring reinforced core and 'type A' fire resistant and thermally efficient expanded polystyrene insulation
- 2** Choice of contemporary and traditional designs
- 3** Secure energy efficient door frame, featuring localised thickening of walls, providing increased screw through pull and hardware retention
- 4** Multi-point locking mechanism and high security keep
- 5** Anti-pick, anti-bump and anti-drill door locking cylinder. (if selected)
- 6** High performance gaskets provide superb weather sealing
- 7** Energy efficient decorative glazing options
- 8** Choice of standard PVC or low aluminium threshold options
- 9** Choice of colours and woodgrain finish options. See page 35
- 10** Meets and exceeds all current requirements under building regulations, when specified
- 11** Optional dog bolts an additional burglar deterrent



MANOR

The Manor is a flexible half-glazed door which has been designed to let the light flood into your home. Inverted mould detailing in the bottom panel give the Manor an understated elegance, making it suitable for use as either a front or back door. **Shown here with Stippolyte glass and optional mullion.**

We have created a specially selected range of PVC-U panel doors, designed to bring style and elegance to any home.

Combined with a wide choice of colour and decorative glazing options, finding the perfect new door for your property is easy.



BUCKINGHAM

The Buckingham is a highly flexible half-glazed door option. Bringing light into your home it can be installed as either a front or back door. It's defined by its subtle octagonal moulded detailing in the bottom panel. **Shown here with Everglade™ glass**



SANDRINGHAM

The classical front door, the Sandringham features an energy efficient solid design providing a high level of security and a half-moon door light, with Georgian Bar detailing. **Shown here with Florielle™ glass**



KENSINGTON

The Kensington is another classic door design. Suited to use as either a front or back door, it features two half-leaded door lights, which allow light to flood into a hallway or kitchen. **Shown here with Charcoal Sticks™ glass**



MADRID

The Madrid brings classical styling to your home. Two large door lights with arched focal points bring light into your home making this beautifully styled front door a popular and flexible choice. **Shown here with Contora™ glass**



PVC-U PANEL DOOR FINISH, GLASS & HARDWARE OPTIONS

Your door is the sum of its parts. We've taken care of the things that you would expect. Energy efficiency, security and weather tightness – but it's your choice of colour or woodgrain and hardware, which will give it those all-important finishing touches.

**See Page 34 for Hardware &
Page 35 for Colour options**

Door featured with
Stippolyte glass

OBSCURE GLASS OPTIONS

PRIVACY FOR YOUR HOME

Alongside colour, your choice of glass will shape the appearance of your door. Whether you choose a simple privacy glass or decorative glass finish, all of the glazing units we supply are internally beaded and feature A-Rated energy efficient glass.



Everglade™



Pelerine™



Charcoal Sticks™



Contora™



Florielle™



Mayflower™



Oak™



Digital™



Taffeta™



Chantilly™



Minster™



Warwick™

Please note double glazed options, do not come as laminated / SBD as standard

OBSCURE GLASS



Door featured with Everglade™



Door featured with Contora™



Door featured with Charcoal Sticks™

HANDLES, HARDWARE & DOOR FURNITURE

Your door handle is the part of your new door that you'll touch each and every day. Your letter plate, choice of knocker, all come together to put the all-important finishing touches to your new door.

Whether you're designing a contemporary, bold, statement door, or recreating the timeless charm of a period installation, we can offer you the perfect choice of lever, pad lever, heritage or contemporary pull handles available in white, gold, chrome black and satin finishes.



We also offer a Long Lever easier to grip Handle (3rd column above) which offers a greater, smooth action and low operating forces required to operate handle. The ample lever-to-door surface clearance option, are Compliant with Document M of the The Disability Discrimination Act (DDA), which states that the door handle needs to be able to be operated one handed without tightly grasping or any twist on the wrist.

Stainless steel options are available, for ultimate corrosion resistance which come with a 10 year guarantee. These are shown in the 1st column above. Standard Black and White Zinc / Aluminium hardware is also covered with a 10 year guarantee.

Appearance and finish on hardware is subject to change. Also please take into account that the product photography may slightly differ from the physical item in terms of color, due to lighting during photo shoot and the print reproduction process.

COLOUR OPTIONS

Colour is a powerful design tool.

It can make your PVC-U windows and doors seamlessly blend into the materials that surround them, delivering a subtle finish, which suggests that they have always been there.

It can drive bold statement designs which exude contemporary sophistication.

Or colour can sit anywhere in between – the choice is yours.

Our extensive colour and finish range from traditional woodgrain options, to contemporary greys and subtle creams and whites brings incredible design flexibility to low maintenance and energy efficient PVC-U windows and doors.



Rosewood /
Rosewood
(Brown Base)



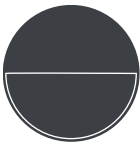
Rosewood /
White PVC-U
(White Base)



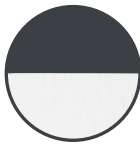
Light Oak /
Light Oak
(Tan Base)



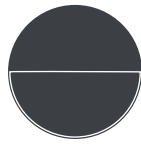
Light Oak /
White PVC-U
(White Base)



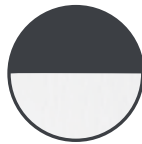
Anthracite Grey /
Anthracite Grey
(Brown Base)



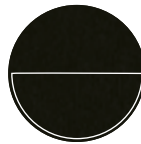
Anthracite Grey /
White PVC-U
(White Base)



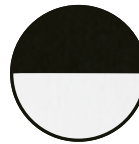
Anthracite Grey
Smooth /
Anthracite Grey
Smooth
(Grey Base)



Anthracite
Grey Smooth /
White PVC-U
(White Base)



Black Brown /
Black Brown
(Brown Base)



Black Brown /
White PVC-U
(White Base)



Cream /
Cream
(Cream Base)



White / White
(White Base)



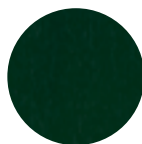
Dark Red
RAL3011



Brilliant Blue
RAL5007



Steel Blue
RAL5011



Dark Green
RAL6009



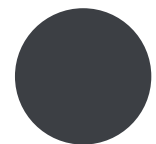
Chartwell Green
BS14C35



Agate Grey
RAL7038



Anthracite Grey
RAL7016



Anthracite Grey
(smooth) RAL7016



Signal Grey
(smooth) RAL7004



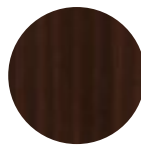
Basalt Grey
RAL7012



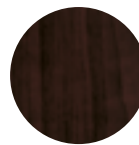
Hazy Grey
RAL7001



Slate Grey
RAL7015



Mahogany
RAL8017



Rosewood
RAL8017



Light Oak
RAL8001



Natural Oak
FL-G



Rustic Oak 1



Dark Oak
FL-F1



Swamp Oak
ST-F



Walnut V



English Oak



Black Brown
RAL8022



White
RAL9010



Cream
RAL9001



Irish Oak



Slate Grey
(Finesse)
RAL7015



Siena PR



AnTeak

COLOUR CODES/ COLOUR MATCH

The colour match data is given in good faith.

Please note that RAL colour codes are the nearest match only and, therefore, not exact matches with the foil.

NOT ALL DOORS ARE MADE EQUAL

Our composite doors combine the latest innovations, to keep your home warm and secure, whatever the weather.

Emulating the natural beauty of wood with an energy efficient warm core technology and high security multi-point locking system, our composite doors are an elegant addition to any home.

Manufactured to the British Standards Institute kitemark accreditation for Quality Management, BSI9001, they're also built to last.

COMPOSITE DOOR

Composite front and back doors emulate the natural warmth of timber but without the maintenance. Secure, thermally efficient and available in a wide variety of traditional and contemporary designs, they're a stunning addition to any home.



- 1 HIGHEST SECURITY LOCKING**
Our doors are manufactured to the highest security standards, featuring multi-point locking mechanisms, keeps and handles as standard. They're anti-lift, anti-drill and anti-pick, meeting and exceeding all current building standards including PAS24 (when laminated glass and security letterplate is incorporated).

- 2 INSULATED THERMALLY EFFICIENT CORE**
Our doors are manufactured from a thermally efficient and tough high density polyurethane foam core. They're tested to be almost 20 per cent better at keeping the warmth inside your home and your energy costs lower, than a traditional solid timber door

- 3 SOUND INSULATION**
The polyurethane core offers great sound insulation, reducing outdoor noise by an average of 31dB

- 4 COLOUR CHOICE**
Choose from 8 through-colour standard finishes or a choice of 38 Premium colour options, making the colour choice for your home as individual as you are

- 5 DOOR FURNITURE**
Define your style with a choice of handles, letter-plates, door knockers and spy holes available in satin, white, gold, chrome and black finishes (see page 34)

- 6 MOBILITY**
All of our doors come with an optional mobility low threshold, ideal for wheelchair use or with pushchairs. This option complies with Document M of the Building Regulations (when ramps are selected)

- 7 NATURAL TIMBER**
The appearance of natural timber but without the maintenance. Composite doors emulate the natural appearance of a traditional timber door but without the associated maintenance. They won't warp or expand and don't require painting

- 8 ENERGY EFFICIENT GLAZING**
Our doors feature the latest in energy efficient double and triple-glazed glass technology manufactured to the British Standard BS1 EN1279 to keep your home warmer.

- 9 HINGES**
Manufactured from stainless steel, unlike lesser doors, our hinges come with a full 10-year guarantee and minimalist aesthetic design lines

- 10 WEATHERTIGHT**
The insulated core is protected from water and moisture ingress by a high performance polymer skin. Our doors are also fully tested to all relevant British Standards

- 11 KUBU EQUIPPED DOORS**
You'll be able to check the status of your door no matter where you are, at any time of the day, right from the Kubu app on your phone. With Kubu say goodbye to uncertainty and hello to peace-of-mind.

Door style is Carnoustie in Chartwell Green featuring Dorchester Green glass

CARNOUSTIE, BIRKDALE & PENINA*

Our most popular composite door option which is now available in a choice of three glazing styles.



Carnoustie



Birkdale Option

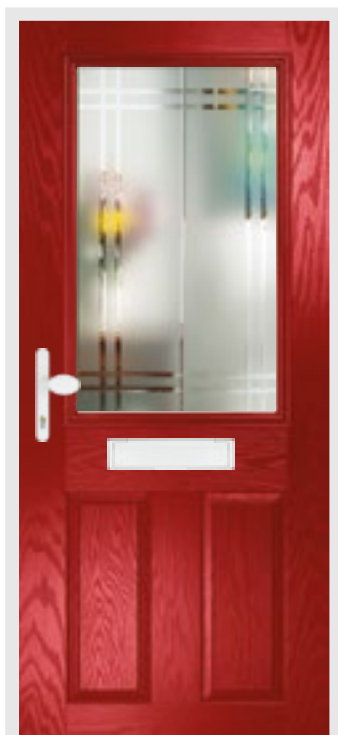


Penina Option

Our composite doors come in a wide choice of elegant designs and colour finishes, which means you can always find the perfect match for your home.

These are some of our favourite designs but if you can't see what you're looking for, please request a copy of our dedicated composite door brochure, The Classic Door Collection.

* Dorchester glass is not available in Birkdale & Penina options



Lytham Gridlite option



Integral blind option

Style: **Lytham**
 Colour: **Red**
 Glass: **Linear**
 Hardware: **White lever pad**

LYTHAM

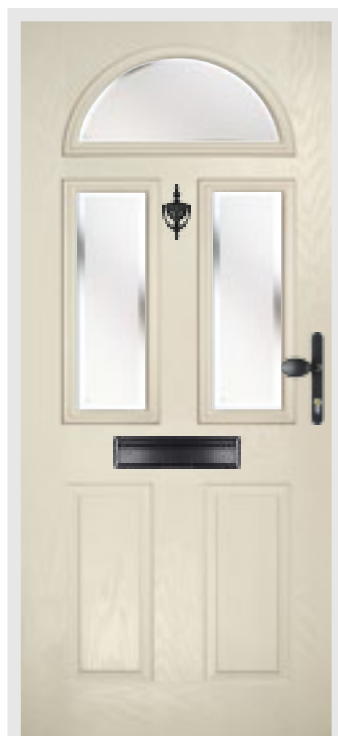
The large glazed area lets light flood through which can be enhanced with the Gridlite option. The Lytham can also have a unique integral blind option.



Style: **Belfry**
 Colour: **Anthracite**
 Glass: **Bullseye**
 Hardware: **Chrome**

BELFRY

Unlike other 'cottage' doors in the market, the Belfry has a unique 'offset etched' detailing and comes in two glazing styles.



Style: **Riviera**
 Colour: **Clotted Cream**
 Glass: **Kensington**
 Hardware: **Black lever pad**

RIVIERA

A traditional favourite with just a hint of modern.



Style: **Troon**
 Colour: **Black**
 Glass: **Reflections**
 Hardware: **Chrome**

TROON

A traditional six panel design gives the Classical interest and detail.



Door style is Monza II Augusta long in Anthracite Grey featuring Matrix glass and 1400mm pull bar

GLASS OPTIONS

CHOOSE THE PERFECT DESIGN FOR YOUR HOME

The decorative touch that defines your door, our wide range of glass options offer you the perfect choice.

Whatever your preference, all of our doors are internally glazed, while glass units achieve top ratings for energy efficiency, keeping your home safe, warm and welcoming.



Dorchester



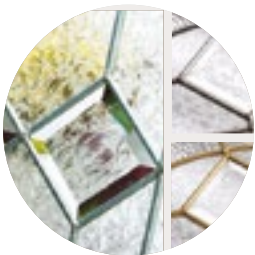
Reflections***



Bullseye



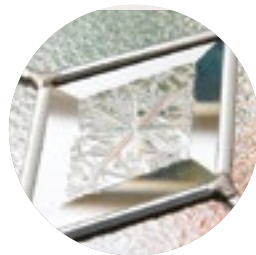
Matrix*



Simplicity**



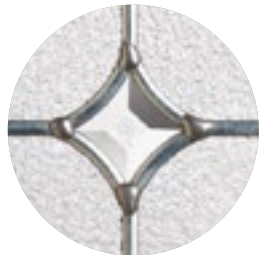
Havana



Classic**



Flair*



Zinc Art Star**



Linear



Kensington



Gridlite Etch



Prairie***

OBSCURE GLASS OPTIONS

PRIVACY FOR YOUR HOME

A choice of designs, our range of etched glass adds a touch of style, elegance and privacy to your home.



Satin



Cotswold™



Stippolyte™



Minster™



Black Grey Sticks™



Contora™



Florielle™



Mayflower™



Oak™



Digital™



Chantilly™



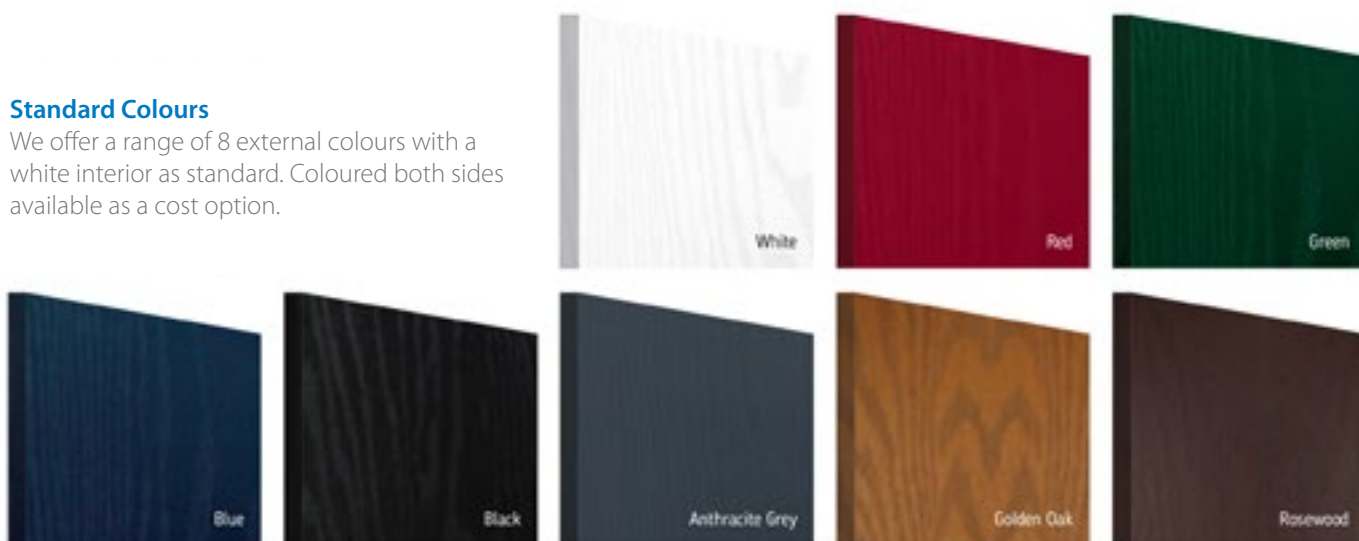
Pelerine™

* Clear Bevels ** Textured Bevels *** Mixture of Clear and Textured Bevels. Door styles are also available with fully clear or obscure double glazed options, as shown above. Please note double glazed options, do not come as laminated / SBD as standard unless specified.

DOOR COLOUR OPTIONS

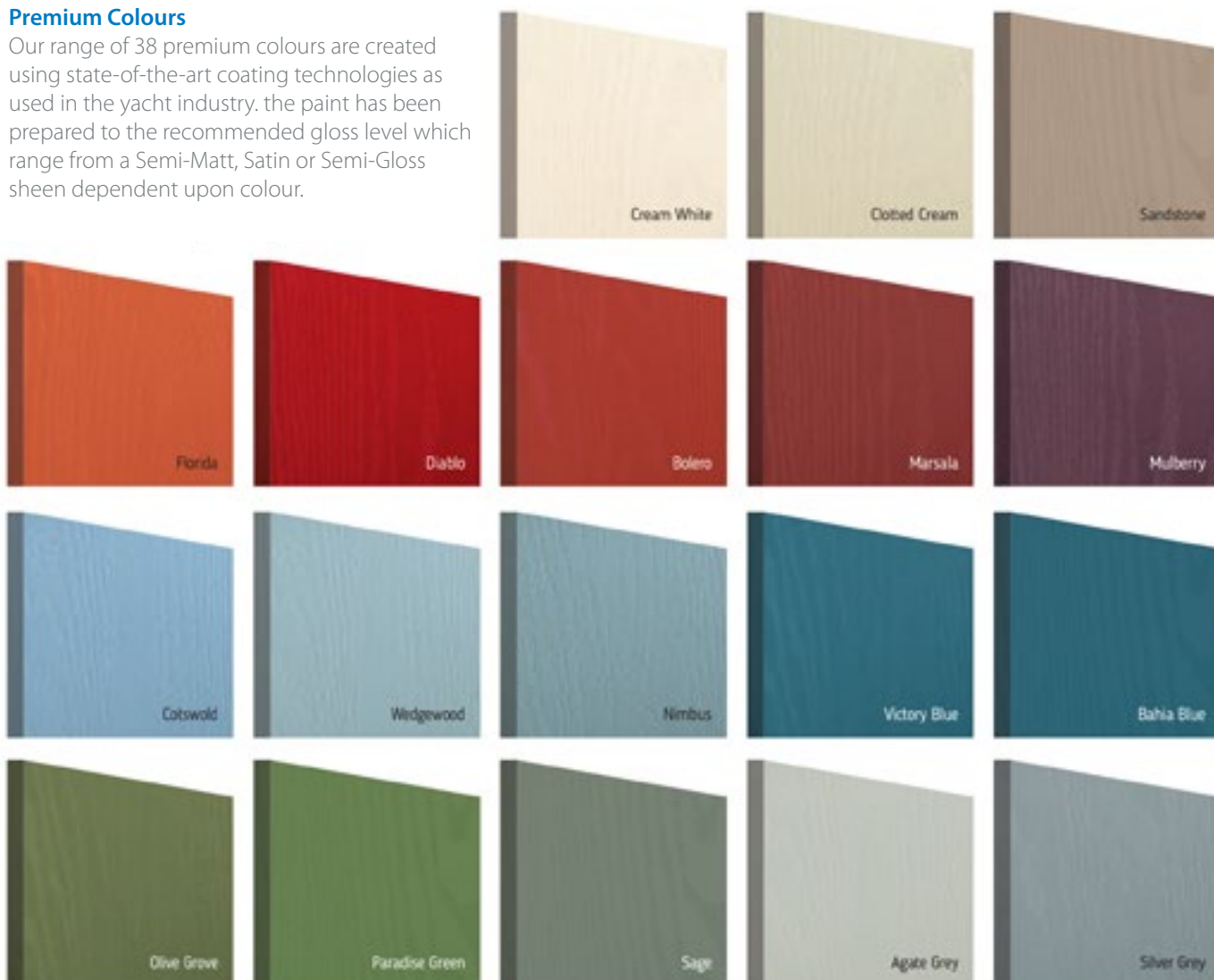
Standard Colours

We offer a range of 8 external colours with a white interior as standard. Coloured both sides available as a cost option.



Premium Colours

Our range of 38 premium colours are created using state-of-the-art coating technologies as used in the yacht industry. The paint has been prepared to the recommended gloss level which range from a Semi-Matt, Satin or Semi-Gloss sheen dependent upon colour.

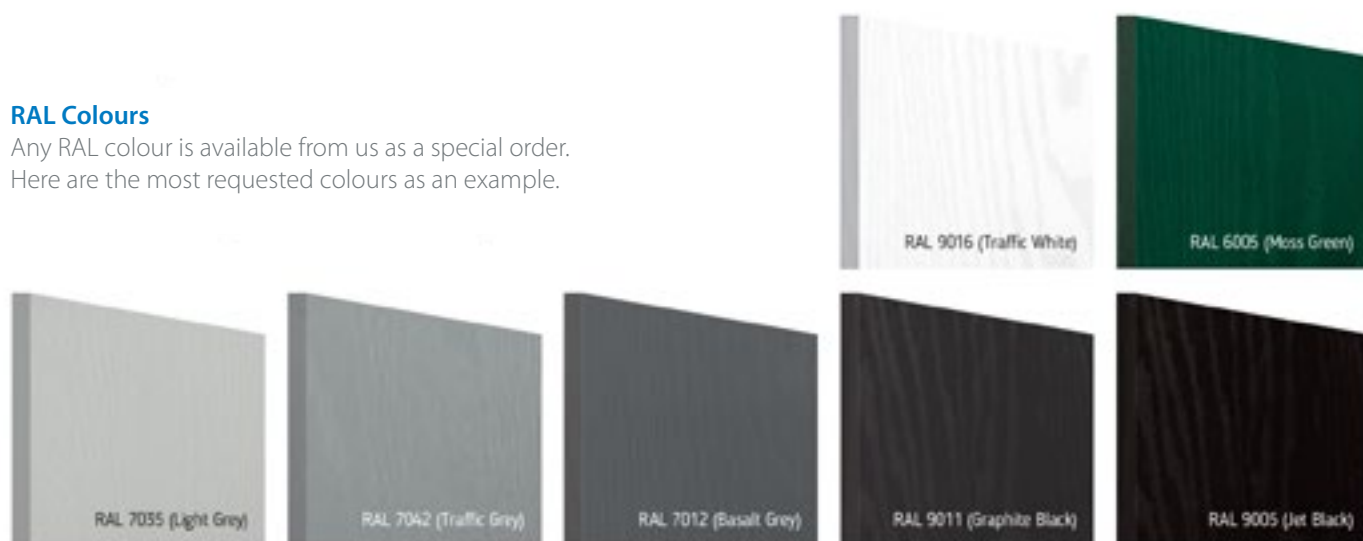


COMPOSITE DOOR COLOUR OPTIONS

* Please note that due to the physical differences of a PVC-U outerframe and the GRP skin of the door, we cannot guarantee an exact colour match of door and outerframe.

RAL Colours

Any RAL colour is available from us as a special order. Here are the most requested colours as an example.



KUBU EQUIPPED DOORS



How many times have you thought...have I locked my door? We've all been there!

With Kubu you'll never have to worry if your door is unlocked again.

Kubu uses smart and simple technology to monitor your lock in real time. You'll be able to check the status of your door no matter where you are, at any time of the day, right from the Kubu app on your phone.

With Kubu say goodbye to uncertainty and hello to peace-of-mind.

Be sure it's secure

What does the Kubu App do?

- It lets you see the status of your door (locked/unlocked).
- Get notifications with every turn of the key.
- You can schedule notifications when you want.
- It shows the history of your doors.
- You can share your door with family and friends.
- Its perimeter feature helps to prevent you from leaving your home unlocked.



Download
the app

Kubu
Home Hub

Door Module

Kubu Equipped Doors

Your composite door is fitted with the Secured By Design accredited Kubu Equipped Door Lock as standard. To activate your Kubu Equipped Door Lock and make it smart, you will need to purchase your Kubu Smart Kit from www.kubu-home.com

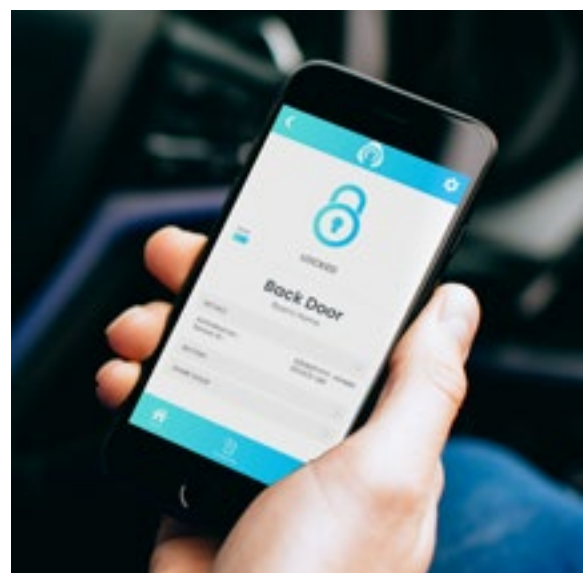
Once your Kubu Home Hub arrives

- 1 Simply follow the QuickStart guide that comes with the Kubu Smart Kit in order to get set up.
- 2 During set up you will be prompted to enter a door reference code, this is on the dummy module that is within the Kubu lock smart activation slot.

Be sure it's secure

- From any place in the world.
- At anytime, day or night.
- On all the doors in your home.
- On all the homes that you look after.

* Please note: Kubu Smart Technology is not available on slam shut doors.





Your composite door will include Smart technology, as standard.



SLIDING PATIO DOORS, FRENCH DOORS AND BI-FOLDING DOORS

Inline Sliding patio doors, French doors and Bi-folding doors are about summer and much more. From relaxing on a warm evening with a glass of wine with friends and family to watching the autumn leaves fall and the seasons change, each opens a window to the world outside.

Whether you decide on a slim sightline and space saving patio door, classic and timeless French Doors, or contemporary Bi-folding doors, your choice will make a perfect connection between your home and garden.

SLIDING PATIO DOORS

Capable of spanning wider distance, sliding-doors leave the view from your property almost uninterrupted and create a great year-round connection between indoor and outdoor spaces.

Manufactured in thermally efficient and low maintenance PVC-U profiles and featuring high security multi-point locking mechanisms, we supply the market leading PatioMaster Sliding Patio Door. Luxurious soft open and close technology, contemporary finishes and slim sightlines mean that our inline sliding door range provides a seamless connection from your home to garden.



PAS 24 Security Keep Rail Jamb & Keep Rail Head



PatioMaster
IN-LINE SLIDING PATIO DOOR

- 1** Slim sightline multi-chamber energy efficient framing system
- 2** Smooth glide lightweight opening and closing mechanism tested to 150,000 cycles
- 3** White, wood-grain and colour options (see page 35)
- 4** High performance energy efficient A-Rated 28mm glazing as standard
- 5** Two three or four pane options
- 6** Steel reinforcement
- 7** Six point locking system with anti-jacking technology for outstanding security as standard
- 8** Anti-lift brackets fitted as standard to all sliding sashes
- 9** Featuring anti-bump cylinders if SBD is selected
- 10** Low track low threshold options for ease of access (internal use only)
- 11** Weather seals prevent draughts and leaks
- 12** Secured by Design Option available (in two pane option) through our supplier Emplas, for accredited products please see:



SLIDING PATIO DOOR OPTIONS

Our Sliding Patio Doors offer incredible design flexibility, so finding a combination that's right for your individual home is simple.

- 1 Decide on a door combination, choosing either from two, three or four pane options
- 2 Take your pick from our range of colours (see page 35) and handles

GLASS

All of our sliding doors come with A Rated energy efficient glass which is toughened for your families safety.

HANDLES

Our high security handles are manufactured from robust materials to an attack resistant design. Available in White, Chrome, Gold, Satin and Black, they feature a special scratch resistant finish and are guaranteed for 10-years.

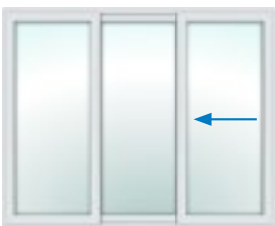
2 PANE OPTION



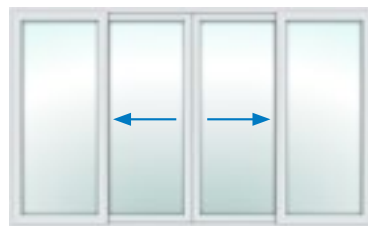
3 PANE OPTIONS



3 PANE OPTIONS



4 PANE OPTION



CLASSICALLY DETAILED, TRADITIONAL DESIGNS

French doors create a timeless and classic connection between your home and garden. Low maintenance and energy efficient, our Sculptured and Chamfered PVC French Door framing systems, emulate the traditional detailing of timber doors.

This traditional design is combined with multi-point locking and profile reinforcement, to deliver the highest standards in entrance door security. A choice of colours and finish, complementing its classic appeal.

FRENCH DOORS

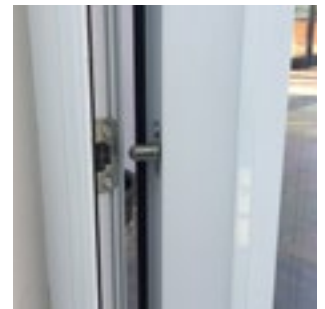


Be sure it's secure

All our PVC-U doors are Kubu equipped as standard, see page 44.



Optima
BY PROFILE 22 SYSTEMS



- 1** 70mm slim sightline frame featuring sculptured and chamfered options plus extensive choice of colour and finish options (see page 35)
- 2** Thermally efficient outer frame featuring six 'honeycomb' chambers and five chamber sash
- 3** Energy efficient recycled composite material or full steel reinforcement options
- 4** Deeper drainage channels carry water away quickly improving weather performance
- 5** 8mm cover on weather seals and optional dog bolt security upgrade available on hinge side of door
- 6** Specially designed hardware fixing points and local thickening of frame walls to improve screw retention and improved security
- 7** High security internal glazing system
- 8** Energy efficient double glazed options featuring warm-edge spacers and low-e coatings to achieve WERs of up to A+ and U-values as low as 1.2W/m²K
- 9** High security multi-point locking system providing the ultimate burglar deterrent
- 10** Meets and exceeds all current building standards including PAS24 (when 3* cylinder and laminated glass is selected)

Choose the perfect frame detail to match your new or existing windows and doors.



SCULPTURED DETAIL

Sculptured detailing offers a more traditional decorative finish replicating the curves found on traditional timber windows.



CHAMFERED DETAIL

Chamfered detailing features a more contemporary and simpler beveled edge, with straight sightlines.



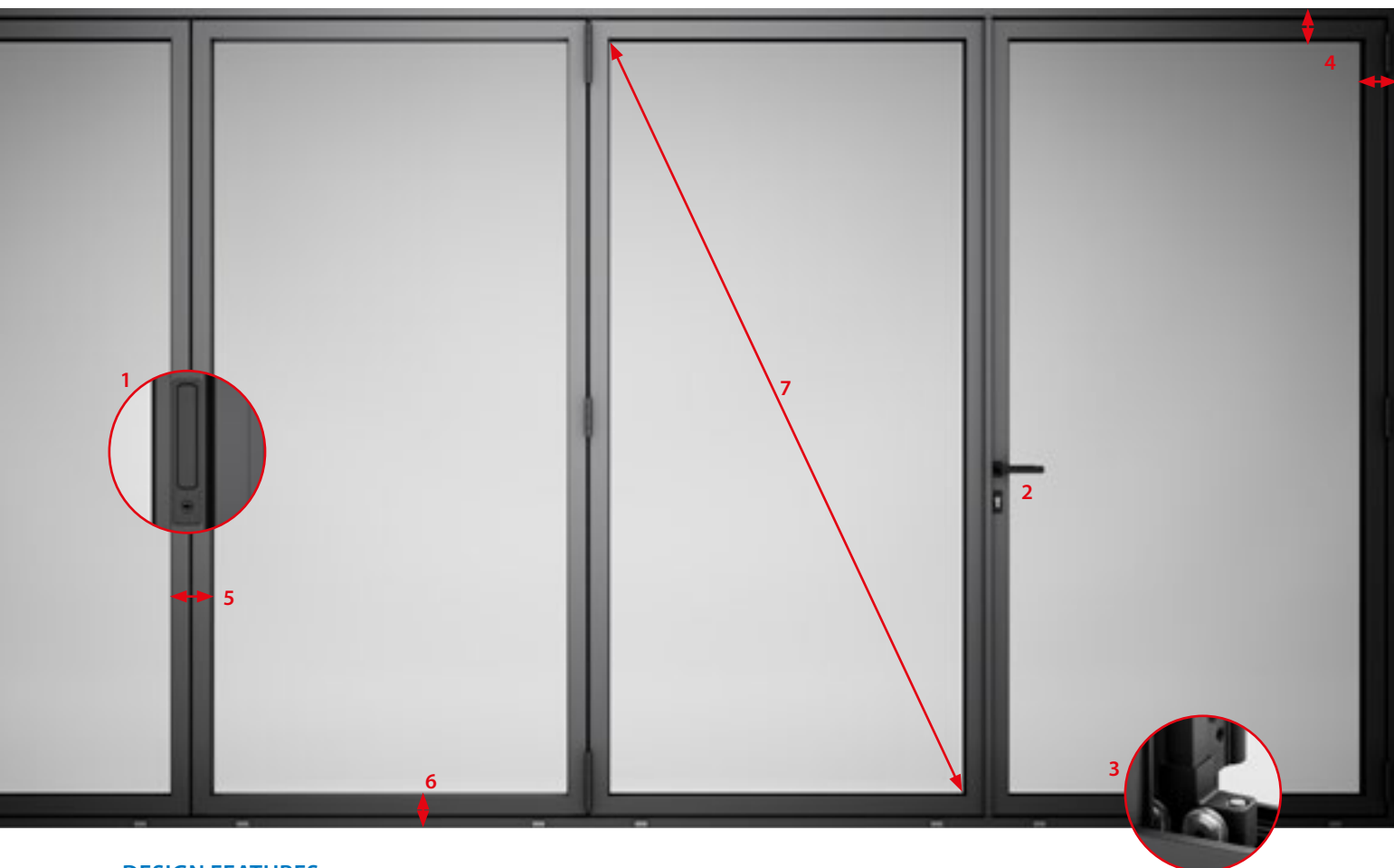
THE ULTIMATE WAY TO HARMONISE YOUR HOME AND GARDEN

Our bi-fold door has been designed with style and performance front of mind. It cleverly combines the intimacy of inside spaces with the freedom of outside living, without ever compromising on performance safety or security.

OPTIONS

- Square bead
- Glazing 28mm – 44mm
- Available in a range of opening configurations
- Available in a range of single or dual colour and anodised finishes
- All configurations available open in and open out





DESIGN FEATURES

1. Unique flush pop-out handle for ease of operation, removing the need for additional unsightly handles
2. Unique traffic door handle
3. Heavy duty compact rollers as standard
4. Both frame and cill sightlines of 97mm
5. 122mm Slimline interlock
6. Low threshold
7. Larger glazing area

COLOUR OPTIONS

Our aluminium bi-folding doors are available in any RAL colour. It means that you can select the perfect complement to your property and existing glazing from classic white to contemporary greys.

Standard Colours

Hipca White 9910HG	Anthracite Grey 7016M
Chocolate Brown 8017M	Deep Black 9005M

Standard Dual Colours

External Anthracite Grey 7016M	External Deep Black 9005M
Internal Hipca WhiteHG 9910HG	Internal Hipca WhiteHG 9910HG

Popular RAL Colours

1013M	1015M	7044M	9001M
7034M	1019M	6021M	7032M
3005M	9010M	6003M	7021M

SECURITY

PEACE OF MIND, BUILT IN

With one home in England and Wales broken into every seven seconds – the majority by forcing or kicking a door – your doors and windows are in the ‘frontline’ in the battle to protect your home from intruders.

All of our doors and windows are designed to give you and your home the highest levels of protection, featuring multi-point locking and reinforced frames.

We can also supply doors and windows to the Secured by Design Police Preferred Specification through our supplier Emplas, for accredited products please see:

www.securedbydesign.com/member-companies/sbd-members?view=companydetail&sbdoldcompanyid=188





ACCREDITATIONS AND REGULATIONS

Our door and window ranges are manufactured to the highest standards in compliance with controls set out in British Standards ISO9001, which ensure a commitment to consistent product quality.

Meeting and far exceeding current UK Building Regulations, your new windows, doors or conservatory are future-proofed for years to come.

OUR COMMITMENT TO THE LATEST REGULATIONS AND STANDARDS

- PAS24: enhanced security for doors*
- Part M, (Access to and use of Buildings) compliance*
- Part Q (Security: Dwellings) compliance
- Part L (Conservation of Fuel and Power), compliance
- ISO 9001, Quality Management System approved to ISO 9001
- Environmental Management Policy approved to ISO 14001
- Health and Safety management policy approved to ISO 18001
- CE Marking approval

• Secured by Design (SBD)* through our supplier Emplas, for accredited products please see:

www.securedbydesign.com/member-companies/sbd-members?view=companydetail&sbdoldcompanyid=188

- U-Value reports independently provided by BuildCheck

*Optional specially selected product configurations only

PEACE OF MIND BUILT IN



PAS99
IMR 566162



ISO 14001
EMS 566160



BS OHSAS 18001
OHS 566161



ISO 9001
FM 12731



PAS24/SBD
PVC-U WINDOWS
KM 33513



PAS24/SBD
PVC-U DOORS
KM 501528



1 Little End Road | Eaton Socon | St Neots | Cambridgeshire PE19 8JH
T: 01480 407711 | F: 01480 476976 | E: reception@stneotswindows.co.uk
www.stneotswindows.co.uk