

# American CONCRETE WASHOUTS

CONCRETE, PAINT AND DRYWALL WASHOUT SERVICES

**1 (800) 788-0355**

## EPA-COMPLIANT LIQUID/SOLID WASHOUT CONTAINMENT, REMOVAL & RECYCLING SINCE 2004



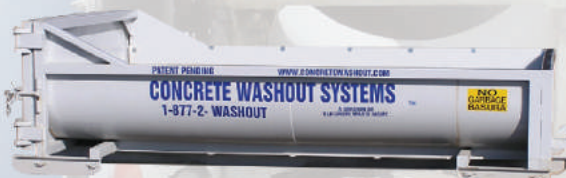
### Concrete Washout (Ramped)

20' L X 8' W Ramps Folded

26' L X 8' W Ramps Extended

Capacity - 900 Gallons

Estimate 1 Washout for 350 Poured Yards of Concrete  
Used for Pump and Mixer Truck Washout



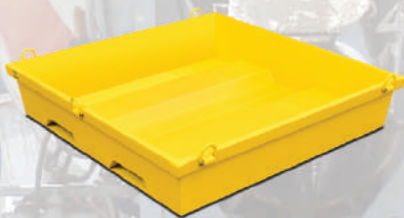
### Concrete Washout (Rampless)

12' L X 8' W X 2' H

Capacity - 1300 Gallons

Limited Availability - Call for Info

Estimate 1 Washout for 400 Poured Yards of Concrete



### Washout Pan

72" L x 72" W x 14" H

Capacity - 242 Gallons

Five Rigging "D" Rings

Angled Floor | Load Tested 25,000 LBS

Engineering Calculations Available



### Paint & Drywall Washout Station

5' L X 4' W x 3'D

Capacity - 448 Gallons



Vacuum system for washout water

