

Margaret Berry's *A Walk on the Wild Side* The Quay Gallery, Snape Maltings

24th-30th April

The exhibition runs for seven days from Friday 24th April to Thursday 30th. Open daily 10am to 5.30pm (Friday from noon; Thursday until 3pm).

During the exhibition, Margaret will be creating a large sculpture in fibre-strengthened air-drying clay, which will be offered for sale on conclusion of the show at Snape.

It will also be possible for people to experiment with clay whilst visiting the exhibition at the Quay Gallery, Snape Maltings. The gallery is close to the road and unsurprisingly sited by the river.

SCULPTURES FOR THE SNAPE MALTINGS' QUAY GALLERY

Ceramic Sculptures at The Quay Gallery, 24th-30th April
Snape Maltings,
Suffolk



www.MargaretBerry.com
...and at the
Reitacademie, Oberderdingen, Germany, 13th-14th June

Artist: ph 07968 030 521

www.MargaretBerry.com



A Walk on the Wild Side, Quay Gallery, Snape

Taliesin 2metres tall approximately

A changeling from Welsh mythology and history as each of his selves:

- Poet
- Small bird
- Fish
- Hare
- Grain of corn

Plants form the skin's surface decoration as he was born of a witch's potion.



Life-sized lady on the movable swing

This is in construction at the moment.

Smaller version examples that stand at about 50cm including the mobile swing frame:



Horses

Other pieces are in progress.

These two are approximately 0.5m tall.



Frogs, hares and horses in sculpted stoneware

Hares

Hares from 10cm to 50cm tall (including ears)



Frogs

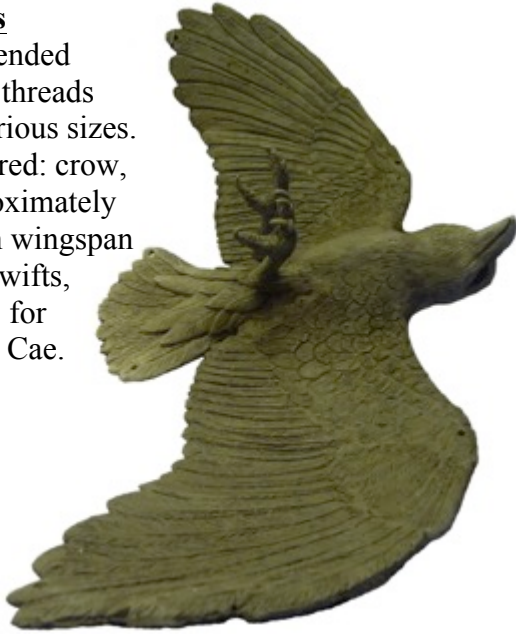
Typically 5cm tall



Birds, crabs and busts in sculpted stoneware

Birds

Suspended from threads in various sizes. Pictured: crow, approximately 50cm wingspan and swifts, made for Coed Cae.



Crabs

This crab is approximately 10cm wide. Decorated in texture and glaze on all surfaces



Busts

Life sized busts in progress.

