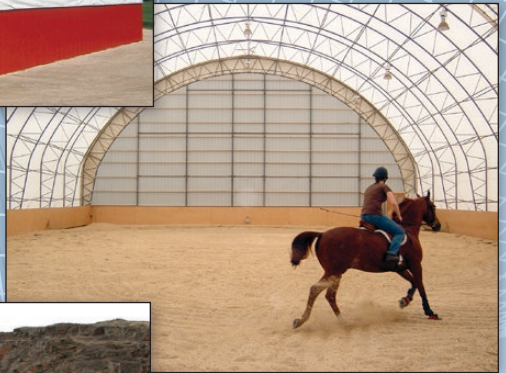


Diamond Shelters

19' TO 160' WIDE
WELDED TRUSS SHELTERS



[Click Here
To Learn More!](#)

Innovative Structures

From a Company Committed to Manufacturing Excellence

Freestanding & High Profile

Diamond Shelters Freestanding models are available from 19' to 160' wide. **Diamond Shelters** High Profile models are available from 19' to 120' wide.

They are typically mounted on concrete foundations or screw piles.



50' x 100' Freestanding



70' x 96' Freestanding



60' x 132' High Profile



110' x 108' Freestanding



60' x 168' Freestanding



90' x 204' Freestanding



40' x 48' Ponywall



Loading Dock



40' x 108' Freestanding

Ponywall

Diamond Shelters Ponywall models are available from 32' to 60' wide.

They typically are mounted on concrete walls. However, the 32' to 40' wide shelters can be mounted on a wooden wall.

Open Space

At widths up to 160', **Diamond Shelters** are well suited for large operations in:

- Agriculture
- Manufacturing
- Warehousing

Diamond Shelters provide an affordable alternative to conventional buildings.



110' Wide Warehouse



90' x 180' Freestanding



Foundations

A variety of foundations have been used with **Diamond Shelters**. Make sure the foundation you choose is properly engineered and meets all building code requirements.

A major furniture manufacturer needed an area to store wood prior to processing. They chose a 110' x 108' **Diamond Shelter** and put it on top of a 12' concrete wall. ▶



Highway Maintenance Salt and Sand Storage



This 110' x 120' **Diamond Shelter** serves not only as a warehouse, but also has a large heated packaging area built inside. One double sliding door, four overhead doors (one with a loading dock) and three man doors provide quick and easy access to warehouse from any direction.

Diamond Shelters

www.DiamondShelters.net

Leaders in Innovation for Agricultural, Commercial, and Industrial Sectors

Welded Truss rafter systems in **Diamond Shelters** produce a wide open space, valued in warehousing and manufacturing design.



120' x 132' Freestanding Baseball Practice Facility



60' x 336' Freestanding Grain Storage



70' x 120' High Profile Arena



50' Insulated Wood Workshop



110' Dairy Freestall



Custom 46' High Profile

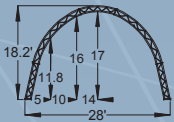


80' x 150' Freestanding

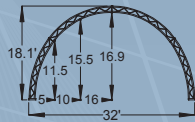
19' to 160' Welded Truss Models

All specifications subject to change without notice.

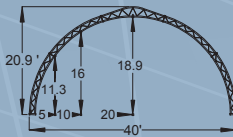
28' Freestanding



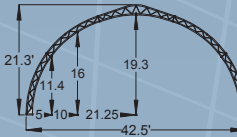
32' Freestanding



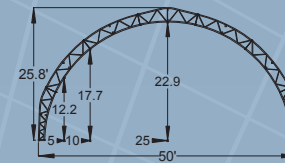
40' Freestanding



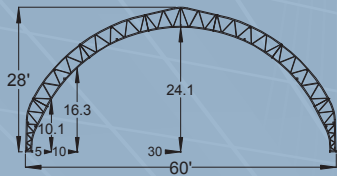
42.5' Freestanding



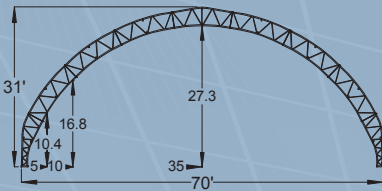
50' Freestanding



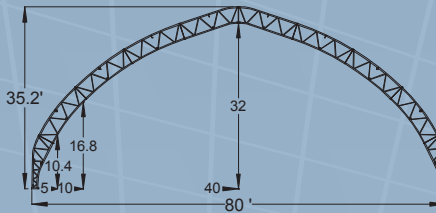
60' Freestanding



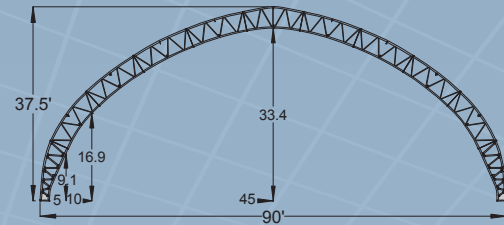
70' Freestanding



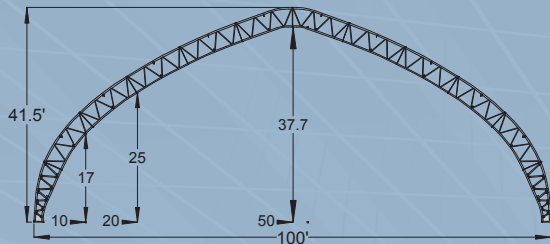
80' Freestanding



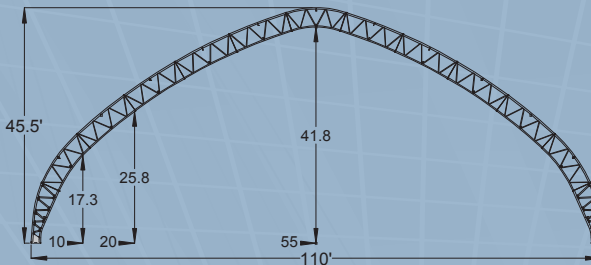
90' Freestanding



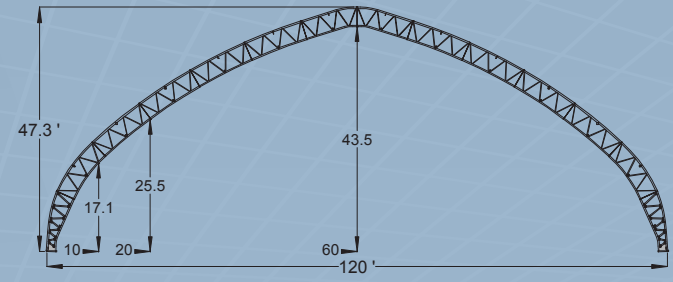
100' Freestanding



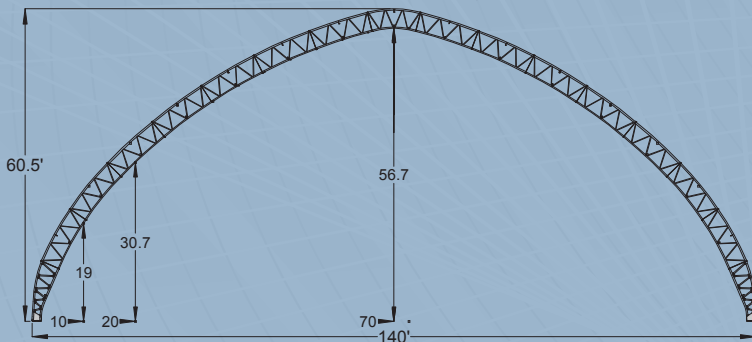
110' Freestanding



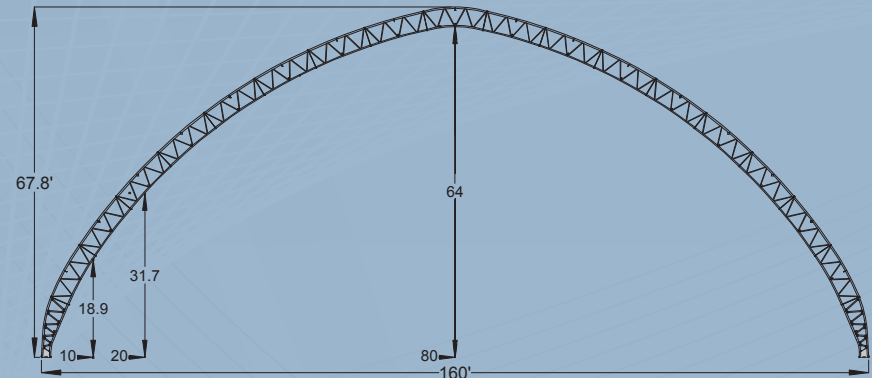
120' Freestanding



140' Freestanding



160' Freestanding



For standard features and options see our product information sheets.

(Note: Not all Diamond Shelters are available in Ponywall or High Profile models)



Effective Cost Advantages

Durable Covers

- All **Diamond Shelter** covers are top quality, North American made 12 oz. polyethylene fabric. D-rings are spaced every 18" and have double reinforced gussets.
- Optional Pipe & Ratchet Tie Down system.
- Our Pipe & Ratchet Tie Down system is standard on all 80' to 160' wide **Diamond Shelters**.
- Flame retardant covers are also available.



70' x 144' Freestanding

- ◆ **Diamond Shelters** allow in an abundance of natural lighting.
- ◆ **Diamond Shelters** provide the most cost effective space for a durable, clear span structure.
- ◆ **Diamond Shelters** can be erected in a very short period of time, which reduces construction costs.
- ◆ **Diamond Shelters** can also be easily dismantled and relocated to another site.



80' x 96' High Profile



70' x 160' Freestanding



80' x 156' High Profile



Warranty

- All 12 oz. **Diamond Shelters'** roof covers are backed by a pro-rated warranty.

Quality Construction

- All **Diamond Shelter** Welded Truss frames are constructed of hollow structural tube with yield and tensile strengths that allow them to withstand heavier stress loads. All frames are engineered to meet requirements of the National Building Code.
- All models are available with 8, 10' or 12' rafter spacing. Spacing required will depend on wind, rain and snow loads at building site.
- All rafters and cross bracing have easy to assemble bolt together joints.
- Truss end frame poles withstand higher wind loads.



60' x 84' High Profile



80' x 40' Freestanding Airplane Hanger



110' x 144' Freestanding



Optional **Powder Coating** provides a superior finish that is tough, durable, attractive and environmentally friendly. **Powder Coating** comes in many colours for a distinctive finish.



Strength and durability of our covers comes from a weave of double stacked, high-density polyolefin slit tapes. 12 oz. covers are backed with a pro-rated warranty. We have an optional extended pro-rated warranty that can be purchased. Flame retardant covers available. Finish your **Diamond Shelter** using one or more of these appealing colours.



NovaShield
Membrane Structure Fabric with
ARMORKOTE BRAND



For smaller sizes of **Diamond Shelters**, see our Single Hoop brochure.



- ◆ At **Diamond Shelters** quality is a tradition.
- ◆ We have been manufacturing shelters since 1989.
- ◆ Single Hoop models from 15' to 38' wide.
- ◆ Welded Truss shelters available in widths from 19' to 160' wide.
- ◆ Custom widths and unique features are our specialty.
- ◆ Technical support is available from our sales and engineering staff.
- ◆ **Diamond Shelters** are manufactured by Dueck's Mechanical Inc., a company certified to CSA standards W47.1 & A660.
- ◆ Manufactured in Canada.



Diamond Shelters



Available from:

DPF CANADA

by D & J FILTER SERVICE

705.561.0750

sales@dpfcanada.com

www.dpfcanada.com

**Click Here
To Learn More!**

Canadian Toll Free 1-888-240-5066

USA Toll Free 1-888-204-2102

1-204-348-2144

Email: info@DiamondShelters.net

www.DiamondShelters.net