

FERGUSON FE 35

Petrol Engine Models

Parts catalogue and price list



DISCOUNT TRACTOR PARTS

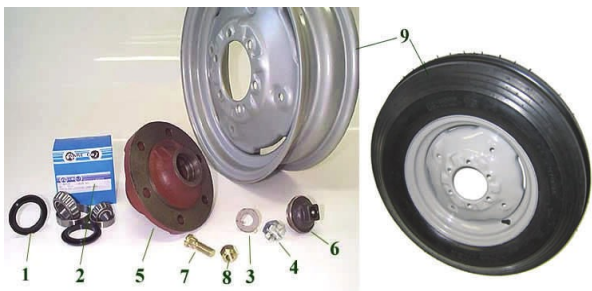
PH 0800 872272

Prices plus gst and subject to change

Front Axle *Early model*

With inner brg I.D. 32mm & wheel nuts & studs in hub.

- Stub Axle LH/RH \$122.64 ea
- King pin bush \$5.10 ea
- Thrust Brg. \$13.41
- Spindle Seal \$2.34
- King Pin Repair Kit \$25.50 per side
- Hub Seal \$4.13
- Hub Brg. & Seal Kit \$58.00 per side
- Keyed Washer \$3.56
- Castellated Nut \$3.21
- Wheel Hub \$66.00
- Hub Cap \$9.36
- Wheel Stud \$2.50
- Wheel Nut \$2.20
- Wheel Rim 600x16 Tyre \$88.00



Front Axle *Late model*

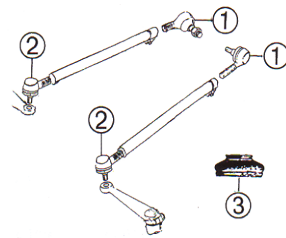
With inner Bearing ID 35mm & wheel Bolts into hub . Dust shield on stub axle.

- Sub Axle LH/RH \$118.64 ea
- Dust Shield \$12.20
- Bush \$5.10
- Thrust Brg. \$13.41
- Spindle Seal \$2.34
- King Pin Repair Kit (2 Req.) \$25.50 ea
- Hub Seal \$4.86
- Hub Brg. & Seal Kit \$45.00 per side
- Keyed Washer- -1 1/4in Dia \$3.56
- Castle nut \$8.27
- Wheel Hub \$72.00
- Hub Cap \$9.36
- Wheel bolts \$2.81 ea
- Wheel Rim \$88.00

Prices plus gst & subject to change

Steering

- Tie Rod Ends-Rear End \$28.50
- Front End \$25.05
- Universal Boot \$4.00
- Axle Pivot Pin \$51.48
- Pivot Bush (2 Reqd.) \$12.45 each
- Axle Bolt \$4.37
- Radius Rod Bolt \$5.46
- 5/8 UNF nut \$0.78



Cooling

Hoses

- Top Hose \$7.26
- Bottom Hose \$11.33
- By Pass Hose \$7.89
- Radiator hose kit \$20.25

- Fan Belt \$17.20 Wide Section
- \$16.85 Narrow Section
- Water Pump (without pulley) \$74.65
- (with pulley. Wide Section) \$158.65
- Radiator \$473.22
- Radiator cap \$15.00
- Thermostat \$13.20



Engine

Hoses

- Air Cleaner to Dash \$30.00
- Carb to Air Cleaner (2reqd) \$5.94 ea
- Breather Pipe to Air Cleaner \$3.44
- Breather Pipe to Oil filter \$5.70

Engine Kits (87mm Bore)

Available with finished or semi finished liners.

In tractor kit

- 1) Contains pistons, Liners, Gaskets, B.E. Brgs, Chrome liner 1mm Deep Flange with 91.49mm Bore \$691.76

Full engine o/haul kit

- 2) As above plus main bearings, crankshaft seals, crankshaft thrusts. \$759.37

Crankshaft kit

- 3) As above plus crankshaft. \$1198.10

ENGINE PARTS

- Piston/liner kit \$130.00ea
- Piston Ring Set \$19.50 per cyl
- Piston \$69.00 ea
- Cylinder Liner \$76.50ea
- Cylinder liner Seal \$8.58ea (2reqd)
- Crankshaft \$520.00
- Big End brg Set \$59.28 Avail std >0.040"
- Main Brg Set \$57.72 Avail std > 0.030"
- Crankshaft thrust set \$27.00 std & .005
- Rear Crankshaft Oil Seal \$10.14
- Flywheel lock tab \$2.66 ea 2 reqd
- Gudgeon Bush \$7.65 ea
- Oil Pump Rotor Assembly \$98.64
- Ring Gear \$86.65
- Engine Oil Filter \$10.00
- Oil Bath Air Cleaner \$90.64
- Mesh Element \$27.00

Prices plus GST and subject to change

Timing Gears

- Timing Cover Seal \$10.92
- Timing Cover \$225.00
- Timing Cover Gasket \$3.12
- Crankshaft Sprocket \$70.00
- Camshaft Sprocket \$82.65
- Governor Weight Assembly \$82.50
- Cup & Shaft \$42.12
- Governor Shaft oil seal \$42.50



Cylinder Head

- Inlet Valve \$13.20 ea
- Exhaust Valve \$15.00 ea
- Valve Guide Inlet \$6.00 ea
- Valve Guide Exhaust \$6.93 ea
- Valve Spring \$3.90 ea
- Head Gasket Set \$48.00
- Bottom Gasket Set \$31.20
- Sump Gasket \$14.04
- Rocker Cover Gasket \$7.20
- Head Gasket \$33.00



Battery Leads

- Battery to Earth 450mm \$29.96
- Battery to Solenoid 690mm \$38.12
- Solenoid to Starter 450mm \$26.33
- Solenoid to Starter 600mm \$29.04 (option)



Fuel System (Zenith 28gCarb)

Carburetor (non orig design) \$366.50
Caburetor Gasket Set \$17.20
Carb Overhaul Kit \$61.00
Needle & Seat \$20.25
Fuel Tank \$365.24

(diesel tank with fitting kit)

Fuel Tank Cap \$42.00
Fuel Tap \$43.50 *Non orig design.*
Has glass bowl, gauze and reserve tap
Glass Bowl orig type \$12.50
Bowl Gasket Orig type \$2.00
Bowl Gasket Non orig \$3.00
Glass Bowl non original \$9.36

EXHAUST

Upswept Exhaust Kit \$118

Contains Muffler \$58.50
Elbow \$51.00
Flange Gasket \$4.50
Clamp \$4.00

Downswept Exhaust Kit \$118

Contains Muffler \$46.80
Exhaust Pipe \$60.84
Flange Gasket \$4.50
Clamp \$4.00

Muffler heat shield \$33.00 (D/S exhaust)

Manifold Gasket \$6.00 (2 gaskets)

Manifold Stud & Nut \$6.24

Muffler Rain Cap \$14.00

Electrical

Generator \$166.65

Pulley \$82.40 Wide section

Pulley \$34.30 Narrow section

Voltage Regulator

Round Wire Terminals \$66.00

Spade Type Terminals \$66.00

Starter Motor \$224.00

Starter Solenoid \$35.60 (*non orig*)

Ignition Switch & Key \$46.00

Ignition Warning Light \$14.00 non orig

Gearbox safety start switch \$36.80

IGNITION SYSTEM

Spark Plugs \$4.00ea

Ignition Points \$12.00

Condenser \$9.00

Distributor Cap \$48.40

Rotor \$9.40

Spark plug Lead Set \$56.25

Distributor with Cap \$280.00 (non orig)

Ignition coil \$48.00

Lights

Headlight kit \$124.90

Includes 2 x headlight, work lamp
& universal headlight switch

Headlights only \$76.00 pr



Steering

Dome Chrome Nut \$9.74

Chrome washer \$13.26

Chrome collar \$14.04

Steering Wheel \$48.50

Steering Shaft Assembly \$167.00

Steering Shaft Bearing Kit \$30.00

Steering Box Oil Seal \$5.00 ea

Wheel Spinner \$22.50

Instruments

Water temp gauge \$32.25

Oil Pressure Gauge \$26.50

Ammeter \$19.00

Rev counter /Hour Meter \$48.00

Cable Assembly \$44.00



Mudguards & Panels

Front grill \$110.00

Bonnet top and door POA

Under grill apron \$101.50

Lower Side Panels POA

Hood to Dash Sealing Rubber \$18.72

Hood Lock Rod & Wing Nut \$14.00 ea

Hood Top Door Lock Lever \$21.00 ea

Hood Pivot Bolt \$5.00 ea

Quarter Shell Guards \$165 ea

Quarter shell skin \$130.00 ea

Mudguard Mount Bolt & nut \$11.50 ea

Bonnet Emblem \$165.00 (3 triangle type)

Bonnet Emblem \$145 (Rectangle)

Bonnet Side Emblem \$145



Foot Rests LH / RH \$79.50 ea

Decals \$25.00 set

Paint

- StoneleigGrey1L \$39.36
- Stoneleigh Grey 4L \$104.69
- M.F. Red 1L \$47.64
- M.F. Red 4L \$127.05

Thinners 4L \$46.47

Primer undercoat \$90.22



Seats

Bucket pan

Seat \$130.00

Seat squab cushion \$63.00

Backrest cushion \$37.00

Suspension seat Fixed base \$242.00



Clutch kit

Single Clutch Kit 9" \$471.00

Comprises of: Pressure Plate \$198.00

Clutch Plate \$138.50

Release Brg \$217.00

Spigot Brg \$7.65

Dual Clutch Kit 9"/11" \$798.00

Comprises Pressure Plate asem. \$662.50

Clutch Plate \$125.00

PTO Plate \$58.50

Release Bearing \$58.50

Spigot Bearing \$7.65

Also Available (not in kit)

Release brg carrier \$34.50



Prices plus GST & subject to change

Transmission

Main input shaft Oil Seal

Specify size POA

Multi Power Transmission

Specify size POA

Shear Sleeve 54mm Dia127mm Length

Grooves - 2 \$73.32

Crown Wheel & Pinion Incl. Sleeve Short/

Long Pinion \$513.21

Crown Wheel Bolt \$3.44

Crown Wheel Nut \$2.10

Diff. Carrier Brg. \$75.00 ea

Transmission Dipstick \$9.68

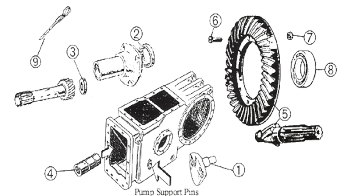
Gear lever boot \$4.00

Gear lever knob \$7.80 (*non orig*)

Main gear lever \$87.50

High low gearlever \$36.00

Pump locating dowel \$15.60 ea



Rear Axle

Outer Axle Seal \$11.70

Inner Axle Seal \$7.00

Gasket Axle Housing \$3.00

Bearing \$79.00

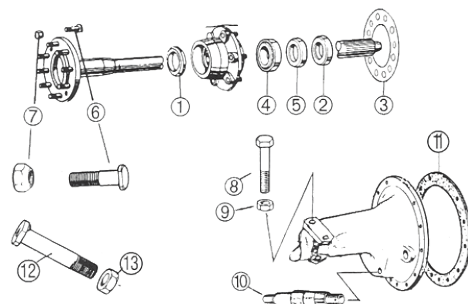
Locking Collar \$15.30

Rear Wheel stud 9/16" UNF \$3.15

Rear Wheel nut 9/16" UNF \$1.56

Plough arm pivot pin Cat 1 \$16.50

Inner Axle Housing Gasket \$3.00



Brakes

- Linings** \$46.50
- Brake Drum** \$119.00
- Spring (4 Reqd.)** \$2.10 ea
- Brake Drum Screw** \$4.68 ea
- Fixing Set (2 Reqd.)** \$12.50 ea
- Brake Shoe set (4 shoes)** \$197.50



Wheel Rims rear 28" \$240 ea

Hydraulics

- Hydraulic Pump** \$580.00
- Std. Hydraulic Repair Kit** \$131.00
- Major Hydraulic Rebuild Kit** \$307.00
(Individual Parts Available)

Hydraulic Lift Cover

- Up to Serial Number 65684:*
- Valve chamber kit** \$26.50
 - Valve chamber** \$60.00
 - Relief valve** \$51.00
 - Control valve** \$43.50
 - Ram Piston Rings** \$36.00 set
 - Ram Piston** \$63.00
 - Cross Shaft** \$130.63
 - Cross Shaft Bushes (4 Reqd.)** \$5.60 ea
- From Serial Number 65684:*
- Piston Rings (3 Reqd.)** \$6.00 ea
 - Piston** \$72.00
 - Ram cylinder** \$146.63
 - Cross Shaft** \$130.63
 - Cross Shaft Bushes (4 Reqd.)** \$5.60 ea

- Plunger** \$23.40
- Yoke** \$71.76
- Rocker Yoke** \$56.00
- Ferrule** \$5.24
- Lock Nut** \$15.00
- Rubber Boot** \$5.50



*Prices plus GST and
Subject to change*

Power Take Off

- Cap** \$31.20
- Seal** \$15.60
- Bearing** \$48.36
- O Ring** \$3.00
- PTO Shaft** \$160.00



3 Point Linkage

- Lower Link Arms Cat 1**
16mm thick \$144.00
- Eye Bolt Assembly** \$7.50
- Inner Check Chain & Clevis Assem** \$14.00
- Clevis & Pin Set** \$5.30
- Anchor Bracket** \$11.00
- Yoke Rod** \$96.00
- Linkage Draw Bars**
 - Cat 1 \$67.50
 - Cat 2 \$72.00
- Leveling Box** \$147.00
- Adjustable Top Links** from \$45.00
- LH/RH Stay Bracket** \$22.50 ea
- Rigid Stay Bar** \$28.00 ea
- Adjustable stay bar** \$32.75 ea
- Universal sway chain assem.** \$40.50 ea



- GENERAL**
- Workshop Manual** \$86.65
 - Toolbox** \$48.00 (orig design)
 - Toolbox Universal** \$48.00
 - Crank Handle** \$42.00