

Ferguson 35

3 Cylinder Diesel Engine

Parts catalogue and price list



Discount Tractor Parts

Ph 0800 872 272

Prices in this catalogue are plus GST and subject to change

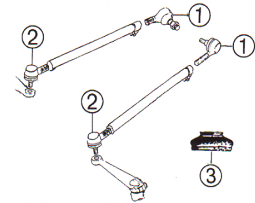
Front Axle

With inner brg I.D. 32mm & wheel nuts & studs in hub.

- Stub Axle LH/RH \$122.64 ea
- King pin bush \$5.10 ea
- Thrust Brg. \$13.41
- Spindle Seal \$2.34
- King Pin Repair Kit \$25.50 per side
- Hub Seal \$4.13
- Hub Brg. & Seal Kit \$58.00 per side
- Keyed Washer \$3.56
- Castellated Nut \$3.21
- Wheel Hub \$66.00
- Hub Cap \$9.36
- Wheel Stud \$2.50
- Wheel Nut \$2.20
- Wheel Rim 600x16 Tyre size \$88.00



- Castellated Nut-3/4in Dia \$3.21
- 1 1/4in Dia \$8.27
- Wheel Hub \$72.00
- Hub Cap \$9.36
- Wheel Studs (Bolt Type) \$2.81
- Wheel Rim 600x16 Tyre \$88.00



Steering

- Tie Rod Ends-Rear End \$28.50
- Front End \$25.05
- Universal Boot \$4.00
- Axle Pivot Pin \$51.48
- Flanged Bush (2 Reqd.) \$12.45
- Axle Bolt \$4.37
- Radius Rod Bolt \$5.46
- 5/8 UNF nut \$0.95



Cooling

Hoses

- 1) Top Hose \$9.90
- 2) Bottom Hose (2 Reqd.) \$7.26
- 3) Pump to Cyl. Block \$8.58
- 4) By Pass Hose \$8.24
- 5) Manifold to Air Cleaner \$15.29
- Radiator hose kit contains 1>4 \$28.50**
- Fan Belt \$13.35
- Water Pump (without pulley) \$75.98
- (with pulley) \$102.64
- Radiator POA
- Radiator cap \$15.00
- Thermostat \$13.20

Front Axle

With inner Bearing ID 35mm & wheel Bolts into hub . Dust shield on stub axle.

- Sub Axle LH/RH \$118.64 ea
- Dust Shield \$12.20
- Bush \$5.10
- Thrust Brg. \$13.41
- Spindle Seal \$2.34
- King Pin Repair Kit (2 Req.) \$25.50 ea
- Hub Seal \$4.86
- Hub Brg. & Seal Kit \$45.00 per side
- Keyed Washer-3/4in Dia. \$3.56
- 1 1/4 in Dia \$3.56

Prices plus gst and subject to change

Engine

Engine Kits

Available with finished or semi finished liners.

A3 152 eng with flat top pistons and chrome liners

In tractor kit

1) Contains pistons, Liners, Gaskets, B.E. Brgs, Chrome liner 1mm Deep Flange with 91.49mm Bore \$704.60

Full engine o/haul kit

2) As above plus main bearings, crankshaft seals, crankshaft thrusts. \$756.52

Crankshaft kit

3) As above plus crankshaft. \$1199.30

A3-152 eng with flat top pistons and Cast Liners 91.491mm Bore

1). Pistons, Rings, Liners, Gaskets, B.E. Brgs \$542.00

2). As above plus main bearings, crankshaft seals, crankshaft thrust. \$587.47

3). As above plus Crankshaft. \$991.29

ENGINE PARTS

Oil filler cap \$11.00

Engine dip stick \$7.80

Oil pump \$87.00

Main brgs (full set) \$39.00

Big end brgs (full set) \$22.00

(Brgs avail std > 0.030 ‘‘)

Crankshaft thrust set \$19.50

Crankshaft \$540

Gudgeon bush \$5.15

Con rod lock tab \$3.00

Crankshaft rear main seal \$6.24 set

Ring gear \$72.00

Flywheel lock tab \$3.44 ea 2 req.

Prices plus GST and subject to change

Timing Cover Seal \$17.16

Timing Cover \$197.28

Top Gasket Set \$66.00

Bottom Gasket Set \$46.80

Rocker Cover Gasket \$9.36

Sump Gasket \$14.20



Cylinder Head

Valve train kit \$117..30 includes full set of guides, springs and guides

Inlet Valve \$10.65

Exhaust Valve \$10.50

Valve Guide \$6.10

Valve Spring \$4.20

Injector Washer \$1.22

Cyl. Head Assembly \$677.00

Valve retainers \$2.20 pr



Exhaust

Manifold \$76.25

Exhaust elbow \$34.40

Manifold Gasket (2 Reqd.) \$3.00

Ex. Flange Gasket \$4.68

Manifold Stud & Nut \$5.61 set

Exhaust Clamp 2 1/4in 57mm \$4.00

exhaust continued pg 3

Upright Muffler

Muffler \$58.50

Exhaust clamp \$4.00

Exhaust rain cap \$14



Downswept Muffler

Down swept front ex. pipe \$76.50

Muffler \$46.80

Exhaust Clamp \$4.00



Fuel System

Lift Pump \$58.50

Repair Kits

AC Pump 5 Top

Cover Screws \$21.06

Corona 6 Top Cover Screws \$36.50

Fuel pump Glass bowl \$12.48

Bowl gasket \$1.20

Diesel Tank Cap \$14.00

Fuel Tap \$22.60

Flexible fuel pipes

560mm long \$18.75

750mm long \$19.00

1mtr long \$19.40

Leak off reservoir \$28.10

Stop rod knob \$5.46



Filters

Engine oil \$10.50

Fuel filters Primary \$9.90

Secondary \$6.75



Electrical

Generator \$166.65

Pulley \$34.50 Narrow section

Regulator

Round Wire Terminals \$66.00

Spade Type Terminals \$66.00

Starter motor \$298.00

Key start switch \$34.50

Manifold heater \$29.64

Gearbox safety start switch \$36.75

Wiring harness \$75.00

Headlight switch \$25.50



Lights

Headlight kit \$124.90

Includes 2 x headlight, work lamp
& universal headlight switch

Headlights only \$76.00 pr



Steering

Dome Chrome Nut \$9.74

Chrome washer \$13.26

Chrome column collar \$14.04

Steering Wheel \$48.50

Steering Shaft Assembly \$166.50

Column Top Bearing Kit \$29.64

Steering Box Oil Seal \$5.00 ea

Column to dash rubber cover \$12.00

Wheel Spinner \$22.50

Instruments

Water temp gauge \$32.25

Oil Pressure Gauge \$26.55

Ammeter \$19.00

Rev counter /Hour Meter \$48.00

Cable Assembly \$20.22

Engine cable bracket assembly \$51.48

Seal only \$14.00



Mudguards & Panels

Front grill \$110.00

Bonnet assembly POA

Under grill apron \$101.35

Head to Dash Sealing Rubber \$18.80

Hood Lock Rod & Wing Nut \$14.05

Hood Top Door Lock Lever \$21.10

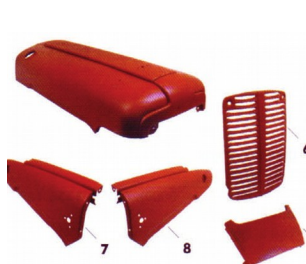
Hood Pivot Bolt \$5.00

Quarter Shell Guards \$165.00

Quarter shell skin \$130.00

Mudguard Bolt & nut \$11.50

Bonnet emblem \$165.00



Prices plus gst & subject
To change
Page 3

Foot Rests

LH / RH \$79.50 ea

Decals \$25.00 set

Paint

StoneleigGrey1L \$39.36

Stoneleigh Grey 4L \$104.70

M.F. Red 1L \$47.65

M.F. Red 4L \$127.05

Thinners 4L \$46.50

Primer undercoat \$90.25



Seats

Bucket pan Seat \$130.00

Seat squab cushion \$62.85

Backrest cushion \$36.60

Suspension seat Fixed base

\$243.00



Clutch kit \$653.20

Comprises of:

Pressure plate assembly \$560.00

Main drive plate \$76.50

(11" x 1 1/8" x 10 spline dished hub)

Thrust Brg \$58.50

Pilot Brg \$7.65

Additional Clutch Parts Available

PTO plate \$58.50

(9" x 1 3/4" x 10 splines)

Thrust Brg Carrier

Std. Trans 54mm ID \$34.50

Multi Power 56mm ID \$34.50

Pressure plate clutch springs

(6 Reqd) \$2.60 ea

Other pressure plate parts avail. POA



Transmission

Main input shaft Oil Seal

Specify size POA

Multi Power Transmission parts POA

Shear Sleeve 54mm Dia x 127mm Length

2 x Grooves \$73.32

Crown Wheel & Pinion Incl. Sleeve Short/

Long Pinion \$513.21

Crown Wheel Bolt \$3.44

Crown Wheel Nut \$2.10

Diff. Carrier Brg. \$75.00 ea

Transmission Dipstick \$9.68

Gear lever boot \$3.00

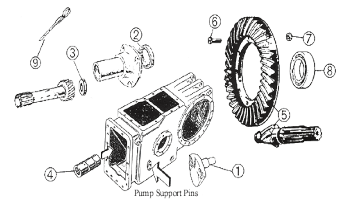
Gear lever knob \$7.80

Knob decal H L, & 123R \$10 ea

Main gear lever \$87.50

High low gearlever \$36.00

Pump locating dowel \$15.60 ea



Rear Axle

Outer Axle Seal \$11.70

Inner Axle Seal \$7.05

Gasket Axle Housing \$3.00

Bearing \$79.00

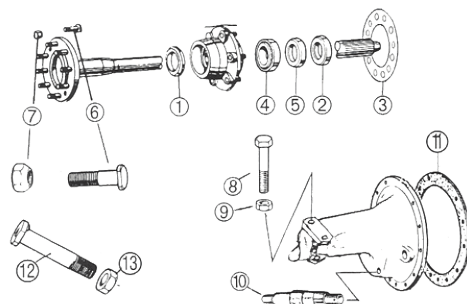
Locking Collar \$15.30

Rear Wheel stud 9/16" UNF \$3.15

Rear Wheel nut 9/16" UNF \$1.56

Plough arm pivot pin Cat 1 \$16.50

Inner Axle Housing Gasket \$3.00



Prices plus GST & subject to change

Brakes

- Linings \$46.50
- Brake Drum \$118.65
- Spring (4 Reqd.) \$2.10 ea
- Brake Drum Screw \$4.68 ea
- Fixing Set (2 Reqd.) \$12.50 ea
- Brake Shoe set (4 shoes) \$197.50



Wheel Rims rear 28" \$240 ea

Hydraulics

Hydraulic Pump \$580.00

- Std. Hydraulic Repair Kit \$130.63
- Major Hydraulic Rebuild Kit \$306.59
(Individual Parts Available)

Hydraulic Lift Cover

Up to Serial Number 65684:

- Valve chamber kit \$26.50
- Valve chamber \$60.00
- Relief valve \$51.00
- Control valve \$43.50
- Piston Rings \$36.00 set
- Piston \$63.00
- Cross Shaft \$130.65
- Cross Shaft Bushes (4 Reqd.) \$5.60 ea

From Serial Number 65684:

- Piston Rings (3 Reqd.) \$6.00 ea
- Piston \$72.00
- Ram cylinder \$146.63
- Cross Shaft \$130.65
- Cross Shaft Bushes (4 Reqd.) \$5.60 ea

- Plunger \$23.40
- Yoke \$72.00
- Rocker Yoke \$56.20
- Ferrule \$5.24
- Lock Nut \$15.00
- Rubber Boot \$5.50



Prices plus GST and
Subject to change

Power Take Off

- Cap \$31.20
- Seal \$15.60
- Bearing \$48.36
- O Ring \$3.00
- PTO Shaft \$160.00



3 Point Linkage

Lower Link Arms Cat 1
16mm thick \$144.00

- Eye Bolt Assembly \$7.50
- Inner Check Chain &
Clevis Assem \$11.70
- Clevis & Pin Set \$5.65
- Anchor Bracket \$11.00
- Yoke Rod \$96.00

Linkage Draw Bars

- Cat 1 \$67.50
- Cat 2 \$72.00

Leveling Box \$146.63
Adjustable Top Links \$45.00

- LH/RH Stay Bracket \$22.50 ea
- Rigid Stay Bar \$28.00 ea
- Adjustable stay bar \$32.75 ea
- Universal sway chain assem. \$40.50 ea



General

- Operators handbook \$46.00
- Workshop Manual \$83.00
- Toolbox \$48.00 (original design)
- Toolbox universal \$48.00