

**Discount Tractor Parts**  
**Ph 0800 872272**  
**[www.discounttractorparts.co.nz](http://www.discounttractorparts.co.nz)**

**FORD 4000 Parts Catalogue**



# Discount Tractor Parts

Ph 0800 872 272

## Parts catalogue Ford 4000

### Front Axle

- Centre beam pivot bracket \$185  
*Bracket includes bush*
- Axle bracket bush \$10.00
- Stub Axle LHS/RHS \$139.97 per side
- King Pin Repair Kit \$24.96 per side  
*Comprising*
- Spindle Seal \$2.34
- Top Bush \$5.10
- Lower Bush \$8.58
- Thrust Brg. \$12.80
- Hub Seal \$10.92
- Wheel Brg & Seal Kit \$39.00 per side
- Keyed Washer \$3.56
- Castel Nut \$3.21
- Wheel Hub \$91.50
- Hub Cap \$9.36
- Wheel Stud (1/2in UNF) \$2.27
- Wheel Nut (1/2in UNF) \$1.88
- Wheel rim \$110 (*takes 750 x 16 tyre*)

### Steering

- Tie Rod Ends
- Manual & Power Steering
- LH Outer \$55.50
- RH Outer \$48.00
- Drag Link :-Front \$47.00
- Rear joint and rod \$75



### Power Steering

- Pump \$613.18
- Pump Filter \$21.53
- Pump & Reservoir Seal Kit \$22.62
- Column Seal Kit \$25.89
- Steering Wheel (36 splines) \$49.92
- Steering Wheel Nut \$7.80
- Wheel Spinner \$22.50
- Power steering conversion kit \$1350



### Cooling

- Water Pump (Single V Pulley) \$105.00
- Fan tropical 8 blade \$49.92
- Thermostat \$13.20
- Thermostat Housing \$21.75
- Top Hose \$13.50
- Bottom Hose \$16.82
- Hose Kit \$25.50
- Fan Belt \$13.35 (*with gene fitted*)
- Radiator Cap \$15.00
- Radiator \$POA

*Prices plus GST and  
subject to change*

## Engine Repair Kits

4.4 bore

**In tractor kit.** *Contains pistons, rings, BE bearings & gaskets* **\$656.10**

**Full overhaul kit** *as above, plus main bearings & seals.* **\$704.60**

**Crankshaft kit.** *As above plus. new crankshaft.* **\$1339.50**

**Liners** *(not incl. in kits)* **\$61.00 ea**



## Cylinder Head

**Inlet valve std.** \$17.70 O/S \$17.16

**Exhaust valve std.** \$19.50 O/S \$21.84

**Valve Spring** \$6.60 ea

**Injector Washer** \$1.22 ea

## Engine Block

**Camshaft** \$253.30

**Camshaft Bearing shells.** \$13.26ea

**Oil Pump** \$146.63

**Pump drive gear and spindle set** \$60.84

**Ring Gear** \$82.50

**Dipstick** \$21.06

**Oil Cap** \$19.50

**Camshaft Follower** \$20.28

**Crankshaft** \$679.30

**Valve Train Std** \$153.30 O/S \$146.63

**Valve Retainers** (2 per valve) \$2.03 ea

**Front Crankshaft Seal** \$8.58

**Rear Main Seal** \$36.00

**Piston** \$126.64ea

**Rings** \$45.24 per cy

**Con Rod Brgs** \$38.22 full eng.set

**Main Brgs.** Full eng. Set \$78

**Gudgeon Bushes** \$9.18 ea

**Con Rod Lock Nut** \$1.47 ea



## Engine Gaskets

**Top Set** (incl. Head Gasket) **\$57.72**

**Lower Set** \$68.64

**Tappet cover** \$15.00

**Exhaust manifold** \$10.00

**Sump** \$19.00

**Thermostat gasket** \$4.50



## Fuel Systems

**Fuel Tap** all metal \$42

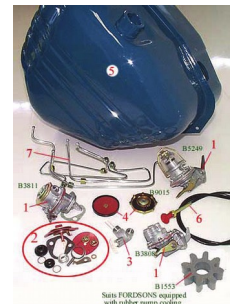
**Fuel Tap** metal & plastic \$21.00

**Fuel Tank Cap** \$10.92

**Stop Cable** \$24.00

**Injector Pipe Set** \$70.50 *(suits rotary CAV)*

**Fuel Tank** \$293.26



## Filters

**Oil-Spin on** \$16.50

Element type \$22.90

**Spin on filter adaptor** \$75.00

**Fuel filter** \$6.50 ea

**Power steering pump filter** \$22.00

**Pre cleaner** \$52.92

**Pre cleaner bowl** \$14



## Exhaust

**Muffler** \$85.30 *Baked enamel. oval body.*

**Muffler** \$68.64 *Baked enamel round body*

**Exhaust manifold upright** \$95.98

**Ex. Manifold gasket** \$10.00



## Electrical

- Generator, 22amp, \$165.00 *non tacho.*
- Generator, 22amp, \$235 *accepts tacho drive*
- Control box, 22amp, \$75.00
- Alternator with regulator \$186
- Starter, \$298.00
- G/box Inhibitor Switch \$39.00
- Key Start Switch \$45.24
- Keys \$4.22 pr
- Wiring Harness, \$120 *generator mod-els .Does not have temp gauge wiring in harness*
- Safety Start Harness \$18.50
- Manifold heater element \$29.64



## Instruments

- Instrument Cluster \$485 *clockwise face cable driven from generator*
- Tacho Cable \$26.52
- Tacho Drive Adaptor \$37.50 (fits on generator)
- Water temp gauge sender \$17.94
- Oil light sender \$11.55
- Fuel tank sender unit \$71.76
- Instrument cluster voltage stabilizer \$56.16



## Lights

- 4 1/2" sealed beam head light unit \$45.00
- Orig type in grill head light \$125 ea
- Rubber light cowl \$37.50
- Tail Light assembly LH/ RH \$55 ea
- Tail light lens LH / RH \$16.50
- Headlight switch \$30 *orig type*



- Light Kit \$124.90 (*non orig*)
- Contains: 2 Headlights, 1 rear Work lamp & 1 Light Switch



## Tractor Body

### Grills

- 2 Piece Metal X (*early*) model
  - Top \$60.84
  - Lower \$126.64
  - (w/out Headlight Holes)
- 2 Piece Plastic *late model*
  - Top \$46.80
  - Lower \$46.80
  - (w/out Headlight Holes)

### PANELS

- Hood Lock Handle \$15.00
- Bonnet latch assembly \$22.50
- Grill Retaining Knob \$17.94ea
- Clip \$3.12 ea
- Nose Cone \$650
- Footplates \$415.00 set
- Multi fit kitset mudguard kit \$730

# CLUTCH

## **DUAL CLUTCH (10 Spline)**

**Kit** \$1186.37

*Includes:*

**Clutch Plate** (11inx1inx10spline) \$91.98

**PTO Plate** (81/2x17/8x29spline) \$180.22

**Cover Assembly** (Incl PTO Plate) \$1126.39

**Thrust Bearing** \$58.50

**Pilot Bearing** \$7.65

## **PLAIN CLUTCH WITH TRANS PTO**

ie without PTO drive hub on clutch  
(1965-9/69)

**Kit** \$393.24

*Includes*

**Clutch Plate** (11x1x15spline) \$95.98

**Cover Assembly** (without PTO drive hub)  
\$281.01

**Thrust Bearing** \$73.32

**Pilot Bearing** \$7.65

**PLAIN CLUTCH** with Independent (live  
PTO) ie with PTO Drive Hub on clutch  
(1965-9/69)

**Kit** \$457.89

*Includes*

**Clutch Plate** (11inx1inx15spline) \$95.98

**Cover Assembly** (with PTO Drive Hub)  
\$353.25

**Thrust Bearing** \$58.50

**Pilot Bearing** \$7.65

**PLAIN CLUTCH** with Transmission PTO  
(without PTO drive hub on clutch)  
(10/69-9/71)

**KIT** \$499.88

*Includes*

**Clutch Plate** (11x1x10spline) \$91.98

**Cover Assembly** \$397.39

**Thrust Bearing** \$73.32

**Pilot Bearing** \$7.65

**PLAIN CLUTCH WITH INDE-  
PENDENT** (live PTO) ie with PTO  
Drive Hub on clutch (10/69-9/71)

**Kit** \$499.88

*Includes*

**Clutch Plate** (11x1x10spline) \$91.98

**Cover Assembly** \$397.39

**Thrust Bearing** \$58.50

**Pilot Bearing** \$7.65

**PLAIN CLUTCH** with Transmission  
PTO ie without PTO Drive Hub on  
clutch (from 10-1971)

**Kit** \$479.88

*Includes*

**Clutch Plate** (11x1x10spline) \$91.98

**Cover Assembly** without PTO Drive  
Hub \$281.01

**Thrust Bearing** \$73.32

**Pilot Bearing** \$7.65

**PLAIN CLUTCH** with Independent  
PTO (ie with PTO rive hub on clutch)  
(from 10-1971)

**Kit** \$466.55

*Includes*

**Clutch Plate** (11x1x10spline) \$91.98

**Cover Assembly** with PTO Drive Hub  
\$353.25

**Thrust Bearing** \$58.50

**Pilot Bearing** \$7.65





## Paints

### Ford Late Blue

1 Ltr. \$43.32 4 Ltr. \$110.85

### Ford Grey

1 Ltr. \$41.45 4 Ltr. \$104.69

Thinners 4Ltr. \$46.47

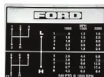
U/Coat 4ltr \$90.22

### Decals Bonnet set

4000 X model \$40.00

4000 Y model \$29.50

Gear shift decal \$12.80



## Transmission

Rear axle seal (Incl. Retainer) \$31.67

Gearlever Cover Assy. \$207.95

Cover assembly gasket \$7.50

Gearbox Filler plug \$16.50

Gear lever knob Main change \$8.50

Gear lever knob H/L \$4.95

Gear lever boots \$10 ea (orig. design)

Gear lever main change \$75

Gear lever Hi / low \$55

Rear wheel stud \$5.70 Wheel nut \$5.78

Large range of gearbox gears, brgs, & seals available POA



## Hydraulics

Pump Gear Type, Transmission Mounted \$1326.34

Hy. top gasket \$12.00

Lift piston seals \$12.00 set

Hydraulic top seal kit \$52

Hydraulic diverter valve \$250

### Hydraulic Filter

Cylinder type (71mm long x 51mm diam x 19mm ID hole) \$21.84

Spin on (From 1971) \$43.50

Large range of Hydraulic top components, valves & seals available. POA



## PT.O.

Oil Seal \$17.16 ( single speed PTO )

Cap \$24.00

PTO shaft, clutch packs, POA



## Brakes

Hand brake lever repair kit \$32.76

Disc (Sintered)

Narrow Face \$54.00 ea

Wide Face Late \$82.50ea

Intermediate Disc (Steel) \$18.75 ea

Actuator assembly \$195 ea

Actuator parts avail :-

Spring \$3.50 ea

Activator rod \$36

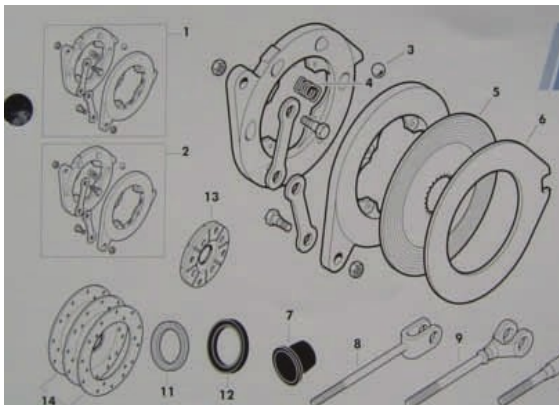
Brake cross shaft seal \$7.50

Brake cross shaft felt \$5.50

Brake Rod boot \$7.80ea

Hand brake actuator \$175

Discs \$48.50 fitted to early models only

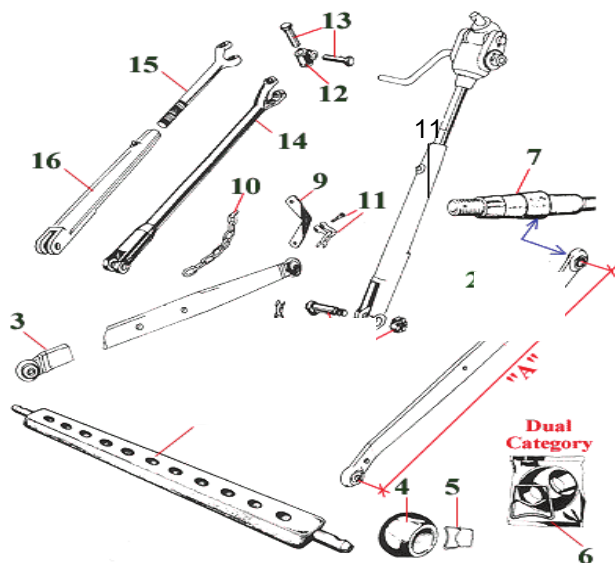


Prices plus gst and subject to change pg 6

## Three Point Linkage

- 1) Linkage draw bar \$72
- 2) Lower link arms
  - 890mm x 16 cat 2 / 2 \$229 ea
  - 968mm x 18 cat 2 / 2 \$224 ea
- 3) Weld on lower linkage balls Cat 1 \$17 ea  
Cat 2 \$24 ea
- 4) Linkage ball flat sided Cat 1 \$6.45  
Cat 2 \$6.45  
Round Cat 2 \$6.45
- 5) Ball retaining clip \$3.90
- 6) Cat 1 / 2 ball and clip \$20.28
- 12) Top knuckle \$14.82
- 11) Leveling box std duty \$170.62  
Leveling box heavy duty \$186.62
- 13) Knuckle pin \$3.60 ea
- 15) Yoke rod Cat 1 3/4" x 360 mm \$57.00
- 16) Fork Cat 1 3/4" x 510 mm \$104.00

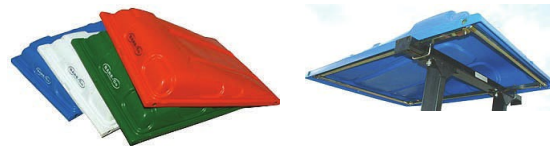
- Outer sway chain \$56
- Sway chain turnbuckle nut Weighted \$17.60  
Round \$11.70
- Top link Std duty cat 2 / 2 \$45
- Original equipment type top link with lever  
Lock, 1 1/4" thread \$118.00
- Top link pin \$5.94



## Sun canopy

Size 1145 mm x 1524 mm  
45" x 60"

Avail in green, blue, red and  
White complete with std ROP  
mounting kit \$481

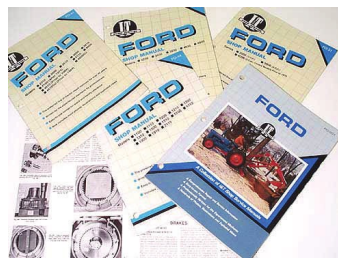


## Seats

- Wrap around suspension fm \$138
- Avail in Blue and Black
- Flat Back Black \$144
- High Back \$199

## General

- Operators Handbook \$46.05
- Service Manual \$82.83



Prices plus gst and subject to change  
Page 6