

# **DISCOUNT TRACTOR PARTS**

**PH 0800 872272**

## **MASSEY FERGUSON 165 & 175 Wheel Tractors**

*Parts catalogue and price list*



**ALL PRICES PLUS GST  
& SUBJECT TO CHANGE**

## 212 Engine cont.

**Top Gasket Set** \$60.84  
**Bottom Gasket Set** \$39.00  
**Cyl. Head Gasket** \$49.92  
**Rocker Cove Gasket** \$10.92  
**Manifold Gasket (2 Reqd.)** \$7.20 ea  
**Sump Gasket** \$14.04  
**Exhaust Flange**  
     Bottom Outlet \$3.75  
     Side Outlet \$3.93  
**Inlet Valve**  
     Std. Size \$11.85  
     003 O/Size \$11.24  
**Exhaust Valve**  
     Std. Size \$15.60  
     003 O/Size \$15.60  
**Valve Spring**  
     Inner \$4.28  
     Outer \$7.20  
**Injector Washer** \$1.22  
**Cylinder Head** 4 cyl \$1079.73  
**Valve Train kit** Std \$186.62  
     0.030 \$183.95  
**Valve Retainers (per Valve)** \$2.34

## Fuel System

**AD 203 Eng. (Exhaust LHS)**  
**Fuel Pump (With Glass Bowl)** \$82.50  
     (without bowl ) \$72.00  
**Repair kit** \$23.40  
**Fuel tank cap** \$14.04  
**Fuel tap** \$22.62  
**Fuel tank mounts** \$8.73 ea  
**Injectors** \$74.88 ea

## A4 212 Engine

**Inj Pipe Kit** \$65.52  
**Inj Leak Off Pipe** \$43.68  
**Fuel Pipe** 56cm \$18.72  
     75cm \$18.72  
     1m \$18.72  
**Stop Knob** \$5.46

**Fuel pump (2 bolt flange)** \$69.00  
**Repair kit for above** \$23.40  
**Fuel pump (4 bolt flange)** \$62.50  
**Repair Kit (Original A/C Pump with 5 Top Cover Screws)** \$21.06  
**Repair Kit (Corona Pump 6 Top Screws)** \$36.51  
**Fuel Tank Cap** \$14.04  
**Fuel Tap** \$20.28  
**Fuel Tank Mounts** \$8.73ea

## Filters

**Pre Cleaners (180mm Bowl)**  
     2 in ID Inlet \$46.50  
     2 1/4in ID Inlet \$52.95  
**180mm Bowl Only** \$13.11  
**Element Suit Oil Bath Air Cleaner** \$31.20  
**Fuel Filter water trap glass**  
     55mm Deep Flat Base \$10.92  
     43mm Deep Curved Base \$10.14  
**Oil Filter Element** \$10.00  
**Oil Filter Spin On** \$16.50  
**Fuel Filter element** \$6.71ea 2 required  
**Inner Air filter element (Where Fitted)**  
     260mm Long \$43.68  
     220mm Long \$33.39  
**Outer Air Filter** \$37.50



## Exhaust

**AD 203 eng with LHS exhaust Manifold** \$207.95  
**Manifold to head gasket** \$3.00 ea  
**Ex flange gasket** \$4.68  
**Ex elbow** \$34.32  
**Ex clamp** \$4.00  
**Muffler** \$76.25  
**Manifold stud and nut** \$5.61 pair

**A4 212 Eng with RHS exhaust Up to eng no UA 78663 bottom o/let**  
**Exhaust manifold** \$127.54  
**Manifold gasket** 2 req. \$7.20 ea  
**Flange gasket** \$3.75  
**Exhaust elbow** \$58.50  
**Clamp** \$4.00  
**Muffler** \$76.25 enamel coated



# Massey Ferguson 165 & 175 Diesel

From Discount Tractor Parts Ph 0800 872272

## Front Axle

### King Pins

#### Standard Duty

A=38mm  
B=295mm  
C=35mm

LH/RH \$147 ea

Dust Shield \$12.17

### Heavy Duty

A=38mm  
B=335mm  
C=46mm

LH/RH \$160 ea

Dust Shield \$29.64

### King pin repair

Bush \$7.50 ea

Thrust Brg. \$15.29

Spindle Seal \$1.32

King Pin Repair Kit (2 Reqd.) \$29.25

## Front Hub

### Std. Duty

1 Hub Seal \$4.86

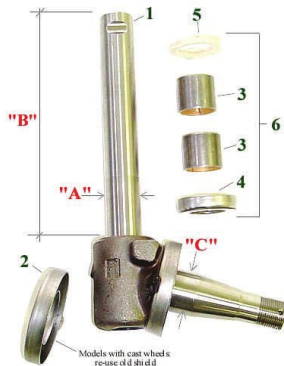
2 Brg. & Seal Kit \$45.00

5 Wheel Hub \$72.00

6 Hub Cap \$9.36

7 Wheel stud \$2.81 (bolt type)

8 Wheel rim \$110 for 7.50 x 16 tyre



## Front Hub

### Heavy Duty

Hub Seal \$8.43

Brg. & Seal Kit \$69

(46mm Inner Brg. ID)

Wheel Hub \$76.50

Hub Cap \$11.70

Wheel Stud \$2.49

Wheel Nut \$2.19

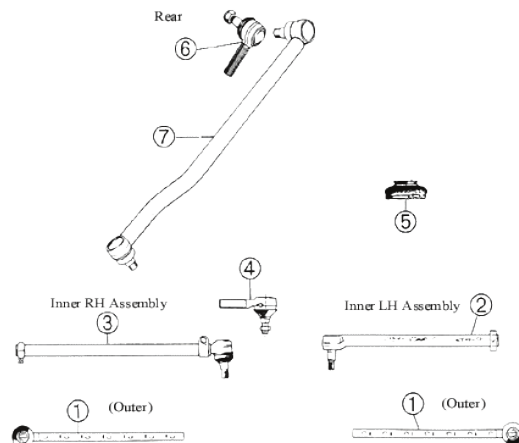
Keyed Washer 3/4in Dia \$3.56

1 1/4in Dia \$3.56

Castellated Nut 3/4in Dia \$3.21

1 1/4in Dia \$8.27

Rim 750 x 16 tyre size \$110



## Steering

1 Outer Tie Rod LH/RH \$36.00 ea

2 LH Inner Tie Rod \$45.24

3 RH Inner Tie Rod Assy \$64.50

4 End Only for Inner Tube \$28.50

5 Rubber boot \$4.00 ea

6 Rear End \$39.00

7 One Piece Drag Link \$120.00

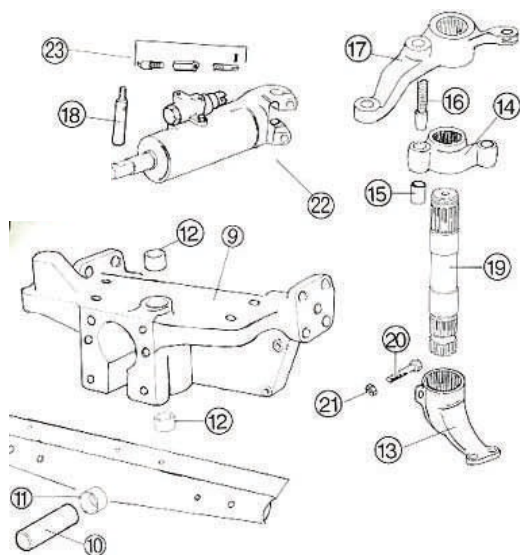
(1110mm length)

*All prices plus gst and subject to change*

## Front Axle

For tractors with A4-212 Eng. RH Side exhaust

- 9 **Front Axle Support casting** \$700.00
- 10 **Axle Pivot Pin** \$76.25
- 11 **Axle Pivot Bush** \$12.48
- 12 **Steering Shaft Bush** \$9.05
- 13 **Arm (Manual & Power)** \$120.00
- 19 **Shaft Manual steer** 290mm length \$85.95



### Models with power steering

- 14 **Arm** \$113.31
- 15 **Bush** \$8.06
- 16 **Pin** \$16.85
- 17 **Arm** \$125.30
- 18 **Cylinder Pivot Pin** \$15.64
- 19 **Shaft power steer** 342mm length \$88.00
- 22 **Steering Ram Assy** \$493.21
- 23 **Valve Linkage Kit** \$34.32

## Power Steering hydraulics

To suit AD4-203Eng Pump LHS of Engine  
With 13 Teeth Helical Gear

- Pump** \$733.15
- Pump Seal Kit :-**
- Aluminium Canister \$98.64
- Non Aluminium Canister \$26.21
- Pump Filter** \$15.29 OD= 86mm ID= 27mm
- Pump filter** \$13.50 OD = 74mm ID = 39mm



- To suit A4 212. Eng Pump on RHS of eng**
- Pump** Multi fit design for 2 or 3 bolt mounting applications \$568.39
- Pump Seal Kit** \$26.21
- Pump Filter** \$15.29 OD=86mm ID=27mm
- Pump Filter** \$13.50 OD=74mm ID=39mm

- Ram Cylinder Assembly** \$493.21  
*includes sensor valve assembly*
- Cylinder Seal Kit** 2 models POA



## Cooling

AD4-203 Eng (Exhaust on LHS)

- Water Hose Kit** \$33.00
- 1 **Top Hose** \$11.16
- 2 **Bottom Hose (2 Reqd.)** \$7.56 ea
- 3 **Pump to Cyl Block** \$9.44
- 4 **Bypass Hose** \$5.15
- Fan Belt** \$13.50
- Water Pump (No Pulley)** \$116.00
- (with pulley) \$123.38

### Cooling Fan

- Front Blade \$14.36
- Rear Blade \$14.39

**Multi-Blade Tropical Fan** \$56.16

**Radiator** \$ POA

**Radiator Cap** \$15.00 10lb long reach

**Thermostat (70mm OD)** \$32.76

**Water bypass housing** \$29.64



**Cooling System cont.**

A4 212 Engine RHS exhaust

**Water Hose Kit** \$27.00**Top Hose** \$15.60**Bottom Hose** \$16.50**Fan Belt** \$14.25**Water Pump** (No Pulley) \$87.98  
(With pulley) \$105.31**Fan Blade**

Front \$11.70

Rear \$11.70

**Multi-Blade Tropical Fan** \$56.16**Radiator** \$POA**Radiator Cap** \$15.00 long reach**Thermostat** (54mm OD) \$13.20**Water Outlet for Top Hose** \$49.92**Valve Train Kit** \$159.96**Injector Kit** \$247 Contains 4 x new injectors (AD203 engine only)**Gasket Sets****Top Gasket Set** \$66.00**Bottom Gasket Set** \$35.88**Rocker Cover Gasket** \$9.36**Manifold Gasket** \$3.00 ea (2 reqd)**Sump gasket** \$12.48 (Rope Seal Only)**Exh. Flange gasket** \$4.68**Inlet Valve** \$9.00**Exhaust Valve** \$12.75**Valve Guide** \$6.09**Valve Spring** \$4.20**Injector Washer** \$1.22**Valve Retainers** \$2.19 per pair**Engine Kits types available:-****In Tractor kit contains:** Gaskets, Big end

Brgs, Rings, Finished Liners &amp; Pistons

**Full O/Haul kit contains:** Gaskets, Big End & Main Brgs, Liners, Pistons, rings, crankshaft thrusts.**Crankshaft kit:** Full O/haul kit plus Crankshaft and Thrusts.**AD4 203 engine Exhaust on LHS****Rope rear seal kits** 91.49mm Bore

In Tractor \$616

Full O/Haul \$675

Crankshaft Kt \$1199

**Lip Rear Seal kits**

In Tractor \$616

Full O/Haul \$675

Crankshaft Kt \$1145

**Timing cover seal** \$17.16**Piston & Liner set** \$143.96 per cy.**Ring Set** \$21.75 (per cy)**Piston** \$82.50 ea**Liner Finished** \$62.40ea**Liner Semi Finisher** \$65.52 ea**Engine Oil Pump** \$173.29**Ring Gear** \$72**Flywheel Lock Plate** \$3.44 ea 2 req.**Crankshaft**

For Rope Seal \$547.60

For Lip Seal \$573.19

**A4 212-Engine (Exhaust on RHS)****Rope Rear Seal**

In Tractor Engine Kit \$726.84

Full O/Haul Kit \$801.00

Crankshaft Kit \$1292.76

**Lip Rear Seal**

In Tractor Kit \$726.84

Full O/Haul Kit \$801.00

Crankshaft Kit \$1308.33

**Timing cover seal** \$12.17**Piston & Liner set** 4 Ring piston \$131 per cy**Ring Set** per. Cy. \$26.52**Piston 4 Ring** \$88**Finished Liner** \$60.84**Semi-Finished Liner** \$62.40**Oil Pump** \$117.30**Ring Gear** \$72.00**Flywheel Lock Plate** (2 Reqd.)\$3.44ea**Crankshaft** (for Rope Seal ) \$648.80**Crankshaft** (for Lip Seal ) \$648.80

Prices plus GST and subject to change

## Exhaust cont.

A4 212 eng. After Eng no UA 78663  
**Exhaust manifold** side exit \$66  
**Manifold gasket** 2 req. \$7.20 ea  
**Flange gasket** \$3.93  
**Exhaust elbow** side entry \$55.50  
**Clamp** \$4.00  
**Muffler** \$76.25

## Electrical

**Generator** (Sealed ) 11 amp \$167  
 Non sealed 22 amp \$165.00  
**Pulley** \$34.32  
**Control Box** (Spade Terminals) \$66  
**Alternator conversion kit.** \$186  
*Contains 45 amp alternator with built in regulator, pulley and mount spacer & bolt*  
**Starter Mtrs.**  
 203 Eng. (RH Mount) \$298  
 212 Eng. (LH Mount) \$315  
**Key Start Switch** (Generator ) \$34.50  
**Keys** \$7.80 pr  
**Heater manifold element** \$29.64  
**Headlamp Switch** \$25.50  
**Wiring Harness** (212 Eng. ) \$78.00  
**Instruments**  
**Oil Pressure Gauge** \$26.52  
**Ammeter** \$18.72  
**Water Temp. Gauge** \$32.25  
**Fuel Gauge** \$31.50  
**Fuel Tank Sender** \$49.50  
**Instrument Panel Light** \$24.00

## Tachometer

6 Speed Trans. \$48  
 8 Speed Trans. \$48  
 Multipower \$48  
**Cable Assembly** \$18.72  
**Engine Drive Adaptor** \$54.60



Prices plus gst & subject to change

## Steering Column

**Steering Wheel** \$73.32  
**Steering Shaft Assembly** From 100001  
 \$280  
**Top Bush** \$17.16  
**Bearing Kit** (Sector Shaft) \$87.34  
**Lower Column Brg.** \$29.64  
**Steering Box Oil Seal** \$7.02

## Grills & Panels

**Lock Lever** for Hood Top Door \$14.51  
**Wire Latch** for Lock \$3.12  
**Hood Pivot Bolt** \$5.00  
**Lower Front Apron** \$60  
**Grille** \$POA  
**Grille Door** \$POA  
**Top Nose Grille** \$27.75  
**LH/RH Side Panel** \$34.50 ea  
**LH/RH Rear of bonnet Side Panels**  
 \$65.00 ea  
**Battery Cover** \$55  
**Battery Cover Clip** \$18.50  
**Bonnet** (No Hardware) \$ POA  
**Mudguards** POA  
**Mudguards** (With built in tool box) \$POA  
**Rear Stop/Flash Lamp** \$51.48 per side  
**Side / Flasher Lamp** \$39.00ea.

## Decals & Paint

**Front Badge Bar** \$38.00  
**Side Medallion** (Plastic) \$POA  
**Decal Set** \$30.00  
**Paint Spraying Enamel** (Can be brushed)  
**MF grey** 1Ltr. \$39.36  
 4Ltr. \$105.00  
**MF Red** 1Ltr. \$47.64  
 4Ltr. \$127.05  
**Silver Mist** 1Ltr. \$43.32  
 4Ltr. \$109.32  
**Primmer U/C** 4Ltr. \$90.22  
**Thinners** 4Ltr. \$46.47



## Clutch

*Clutch kits include pressure plate assembly, clutch plates and brgs*

### 11" Clutch kit \$653.17

Up to Serial No. 564619

*Includes*

**Pressure plate assembly** \$546.53  
(includes PTO plate ) 9 Red Springs

**Main Drive Plate** \$76.50

11" x 1 1/8 x10 Spline

**P.T.O. Plate** \$58.50

9"x 1 3/4" x 10spline

**Thrust Brg.** \$58.50

**Flywheel Brg.** \$7.65

*Also Available:*

#### **Brg. Carrier**

Std. Trans 54mm ID \$34.50

Multi Power 56mm ID \$34.32

### 12" Clutch Kit \$653.17 ( 10 spline PTO )

Up to Serial No. 130773

*Includes:*

**Pressure Plate Assy.** \$546.53 ( includes PTO plate)

**Main Drive Plate** \$75.98 12"x 1 1/8" x 10Spline

**P.T.O. Plate** \$54.00 10" x 1 3/4" x 10 Spline

**Thrust Brg.** \$58.50

**Flywheel Brg** \$7.65

*Also Available*

#### **Release Brg Carrier**

Std Trans \$34.50 54mm ID

Multi Power \$34.32 56mm ID



### 12in Clutch Kit \$653.17 (25 spl. PTO)

After Serial Number 130774

*Includes*

**Pressure plate assembly** \$546.53

Includes PTO plate 9 Red Springs

**Main Drive Plate** \$75.98

12" x 1 1/8" x 10 Spline Dish Hub

**P.T.O Plate** \$72.00

10" x1 5/8" x 25 Spline

**Thrust Brg** \$58.50

**Flywheel Bearing** \$7.65

*Also Available*

#### **Bearing Carrier**

Std Transmission 54mm \$34.50

Multi Power 56mm \$34.32



### Split Torque Single Plate Kit

\$586.52

*Includes:*

**Clutch Assy.** (9 Springs) \$479.88

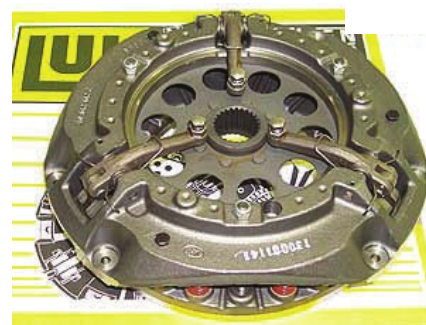
**Clutch Plate** \$75.98

Dished Rigid Hub Organic Disc

12"x1 1/8" x 10 Spline

**Thrust Brg.** \$58.50

**Pilot Brg.** \$7.65



Prices plus gst and subject to change

## Rear Axle

**Outer Axle Seal** \$23.40  
**Inner Axle Seal** \$26.52 (Dry Brakes) *Round Axle Housing to Serial No. 597745*

**Inner Axle Seal** \$34.32 (wet brakes)  
*Square Axle Housing Fm Ser No. 100001*

**Axle Housing Gasket** \$2.97  
**Rear Wheel Stud** 5/8in UNF \$4.05  
**Rear Wheel Nut** 5/8in UNF \$2.49  
**Tapered Shank Cat 2 Pin** \$26.52  
**Inner Axle Housing Gasket** 1/2in Holes \$2.49  
**Rim Bolt** \$5.46 ea  
**Nut** 5/8in UNF \$0.78 ea



## Brakes

**Handbrake Lever Repair Kit** \$17.16

### Dry Brakes models

(Round axle housing) Up to Ser. no. 597745  
**HD Disc** 2 per wheel \$60.84ea  
**Disc Spring** 6 per Tractor \$1.71  
**Axle Brake Seal** \$20.28  
**Brake Pull Rod** \$21.84  
**Ball** (5 per Wheel) \$4.35 ea

### Wet Brakes

(Square housing ) From Ser. no. 100001  
**Ball** (6 per Wheel) \$4.35 ea  
**Sintered Metal Disc** \$46.02 ea  
 (10 per Tractor)  
**Intermediate plate** \$18.72 ea  
 ( 6 per tractor )  
**Brake pull rod** \$28.08  
**Brake rod boot** \$7.80



## Hydraulic Pumps & Filters

### MK 2 Pump

10 Spline Camshaft  
 Filter Faces Up  
 Up to Serial No. 136610 \$906.44

### MK 2 Pump

21 Spline Camshaft  
 Filter Faces Up  
 From Serial No. 130773-136610  
 \$1572.94

Filter For Above Pumps \$21.00

### MK 3 Pump

21 Spline Camshaft  
 Filter Faces Down  
 From Serial No. 136610 \$1053.07  
**Filter For MK 3 Pump** \$23.40

### Auxiliary Hyd. Pump

2 Port Pump with Vertical Mount Plate  
 \$1173.04

### Single Multi Power Pump

ie. Auxiliary Pump Not Fitted \$793.14  
**Repair Kits and service parts** Available for all main hydraulic pumps





## Hydraulic Lift Cover

**Piston Rings** Early (Metal) 3 reqd \$5.93ea  
 Late O Ring 1 reqd \$5.46  
**Back Up Ring** \$22.47  
**Piston** - oring type \$57.72  
**Ram Cylinder.** \$153.30  
**Cross Shaft** \$119.97  
**Cross Shaft Bushes** (2 Reqd.) \$24.00 ea  
**Lift cover gasket** \$3.00  
**Plus full range of levers and linkages**

Serial No. > 130773  
**Cap** \$31.20  
**Seal** \$15.60  
**Bearing** \$48.36  
**O Ring** \$2.73  
**P.T.O. Shaft** \$160  
 Serial No. 130773 > 144682  
**P.T.O. Shaft** \$206.62  
**P T O Seal** \$10.92  
 All Tractors After 144682  
**P.T.O. Shaft** \$186.62  
**P.T.O. Seal** \$10.92

## Seats



**\$210**



**\$148**

Both models have HD vinyl Upholstery, adjustable suspension, sliding base and shock damper

## 3 Point Linkage

**Lower Lift Arms** Cat 2, Both Ends, 18mm Thick 968mm long \$224.58  
**Linkage Balls**  
 Cat 1 \$11.70  
 Cat 2 \$11.70  
**Ball Retaining Clip** \$2.07  
**Dual Cat 1/2** \$13.50  
**Leveling Box** \$197.28  
**Yoke Rod** 3/4inx380mm \$57.00  
**1" x 390mm** \$59.28  
**Fork**  
 3/4in UNC \$40.50  
 1in UNF \$56.16  
**Top Link** Std duty \$45  
**Heavy Duty Check chain** \$77.22 ea

## New Roll Over Protection Frames \$1407



**Tool Box** \$48

## Sun Canopy & Fitting Kit \$481

